

# 476 WILBROD APARTMENTS

SITE PLAN APPROVAL

Site Plan Approval Drawing List	
Sheet Number	Sheet Name
SA-00	COVER PAGE
SA-01	RATIONALE SUMMARY
SA-02	SITE PLAN
SA-03	SITE & GRADING PLAN
SA-04	EXISTING ELEVATION - NORTH & SOUTH
SA-05	EXISTING ELEVATION - EAST
SA-06	EXISTING ELEVATION - WEST
SA-07	ELEVATION - NORTH & SOUTH
SA-08	ELEVATION - EAST
SA-09	ELEVATION - WEST
SA-10	COLOUR RENDERING - BEFORE
SA-11	COLOUR RENDERINGS - AFTER
SA-12	BASEMENT PLAN
SA-13	GROUND FLOOR PLAN
SA-14	SECOND FLOOR PLAN
SA-15	THIRD FLOOR PLAN
SA-16	LANDSCAPE PLAN
SA-17	GARBAGE COLLECTION PLAN
SA-18	GARAGE ENCLOSURE ELEVATIONS
SA-19	ZONING CHART



VIEW FROM SOUTH-EAST CORNER

## WILBROD APARTMENTS

### SITE PLAN APPROVAL

### COVER PAGE

SCALE:  
MARCH 25TH, 2022

11x17 SHEET SIZE



**ARCA-VERDE**  
**ARCHITECTURE INC.**  
243 Keyworth Avenue,  
Ottawa, Ontario, K1Y 0G2  
P: 613-702-5033  
www.Arca-Verde.ca

**SA-00**

DESIGN NARRATIVE

Taking guidance from the existing structure, ARCA-VERDE's design intention for the "Wilbrod Apartments - Renovation and Addition" is to respect the characteristics of the existing structure nearest to Wilbrod Street. The stone, yellow brick, and cedar shakes dictate the design decisions impacting the rear yard addition. The roof lines are intended to align with the existing and the façade locations adhere to the Heritage setbacks ensuring the original structure presents as the primary structure on the site.

Attempting to ensure what is built is better for the neighbourhood than what was first found, the design harmonizes with the neighbourhood, site and existing structure. A secondary achievement is the transformation of the rooming house to a 20 unit (1-bedroom) rental apartments.

In regards to our approach towards the heritage value, ARCA-VERDE made every attempt to respect the value of the site and existing structure while providing the additional rental units needed to make the project viable for the client. Additionally, we arranged elements on site to maximize the opportunities afforded by the boundaries, vegetation, and neighbouring structures.

Finally, we addressed the site planning requirements by ensuring the parking, the garbage enclosure, bike parking, vegetation, allocation of amenity space, provision of landscape area are not only in keeping with the City of Ottawa requirements but are arranged to enrich the lives of the building inhabitants and the neighbours of the site as well.

**WILBROD APARTMENTS**  
**DESIGN BREIF**  
**RATIONALE SUMMARY/ DESIGN NARRATIVE**

SCALE:

MARCH 25TH, 2022

11x17 SHEET SIZE

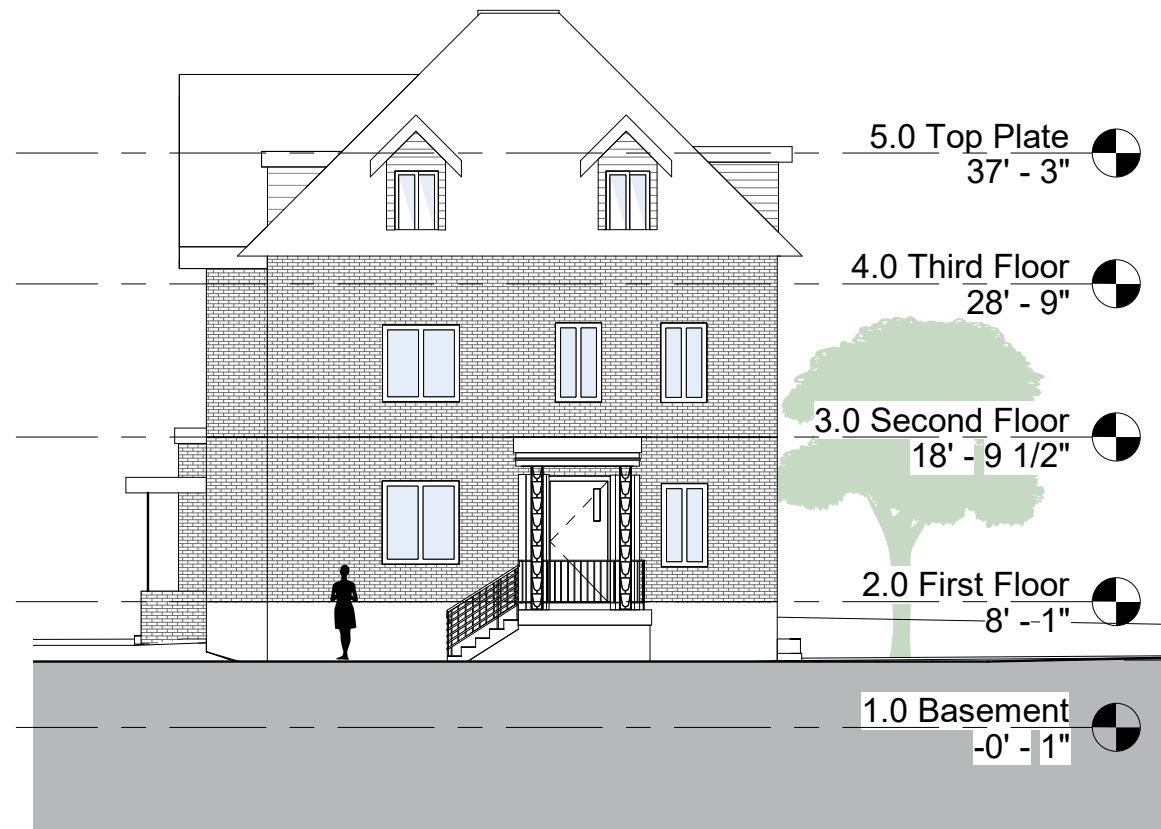


**ARCA-VERDE**  
**ARCHITECTURE INC.**  
243 Keyworth Avenue,  
Ottawa, Ontario, K1Y 0G2  
P:613-702-5033  
[www.Arca-Verde.ca](http://www.Arca-Verde.ca)

**SA-01**







**NORTH ELEVATION - EXISTING**



**SOUTH ELEVATION - EXISTING**

EXISTING BUILDING HEIGHT: 12.0m  
NEW ADDITION HEIGHT: 12.0m

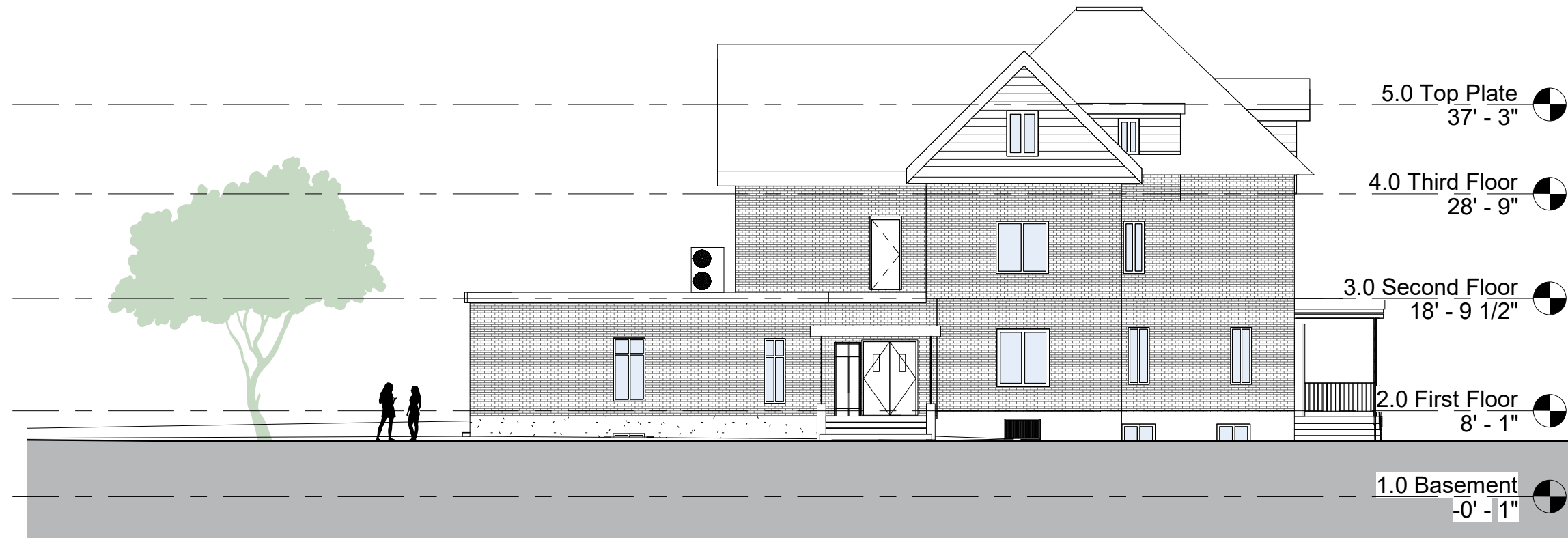
**WILBROD APARTMENTS**  
**SITE PLAN APPROVAL**  
**EXISTING ELEVATION - NORTH & SOUTH**

SCALE: 1 : 150  
MARCH 25TH, 2022



**ARCA-VERDE**  
**ARCHITECTURE INC.**  
243 Keyworth Avenue,  
Ottawa, Ontario, K1Y 0G2  
P: 613-702-5033  
www.Arca-Verde.ca





**EAST ELEVATION - EXISTING**

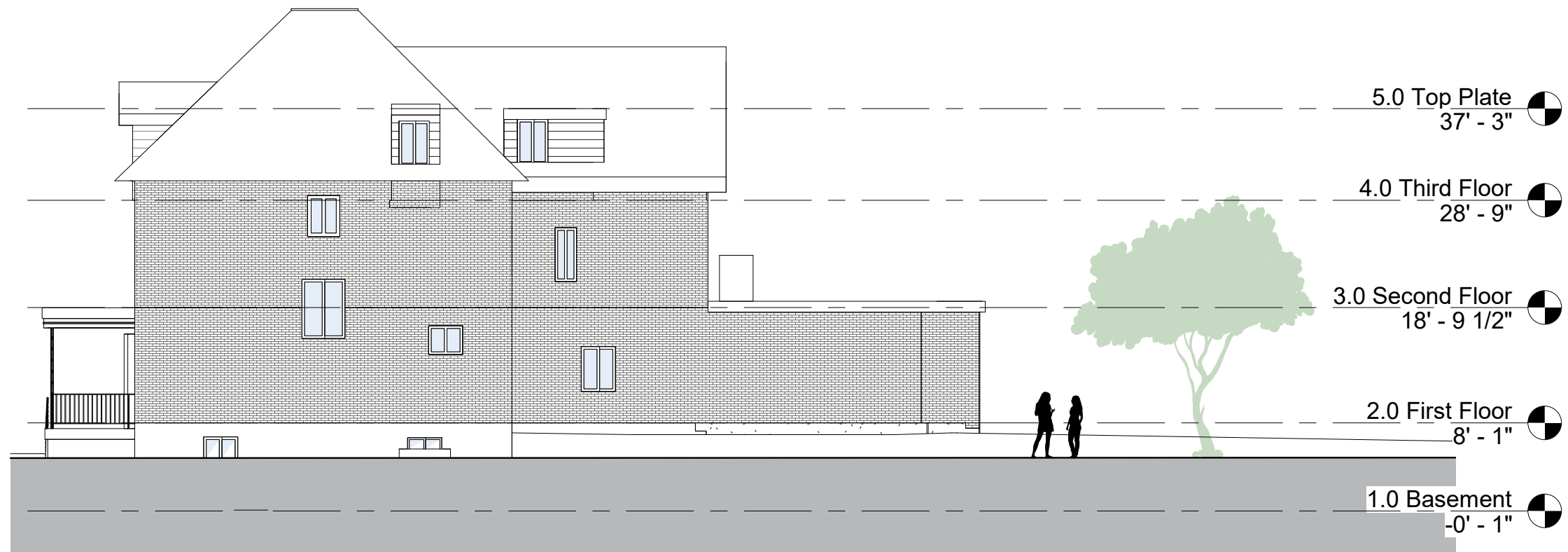
EXISTING BUILDING HEIGHT: 12.0m  
NEW ADDITION HEIGHT: 12.0m

**WILBROD APARTMENTS**  
**SITE PLAN APPROVAL**  
**EXISTING ELEVATION - EAST**

SCALE: 1 : 150  
MARCH 25TH, 2022



**ARCA-VERDE**  
**ARCHITECTURE INC.**  
243 Keyworth Avenue,  
Ottawa, Ontario, K1Y 0G2  
P: 613-702-5033  
www.Arca-Verde.ca



**WEST ELEVATION - EXISTING**

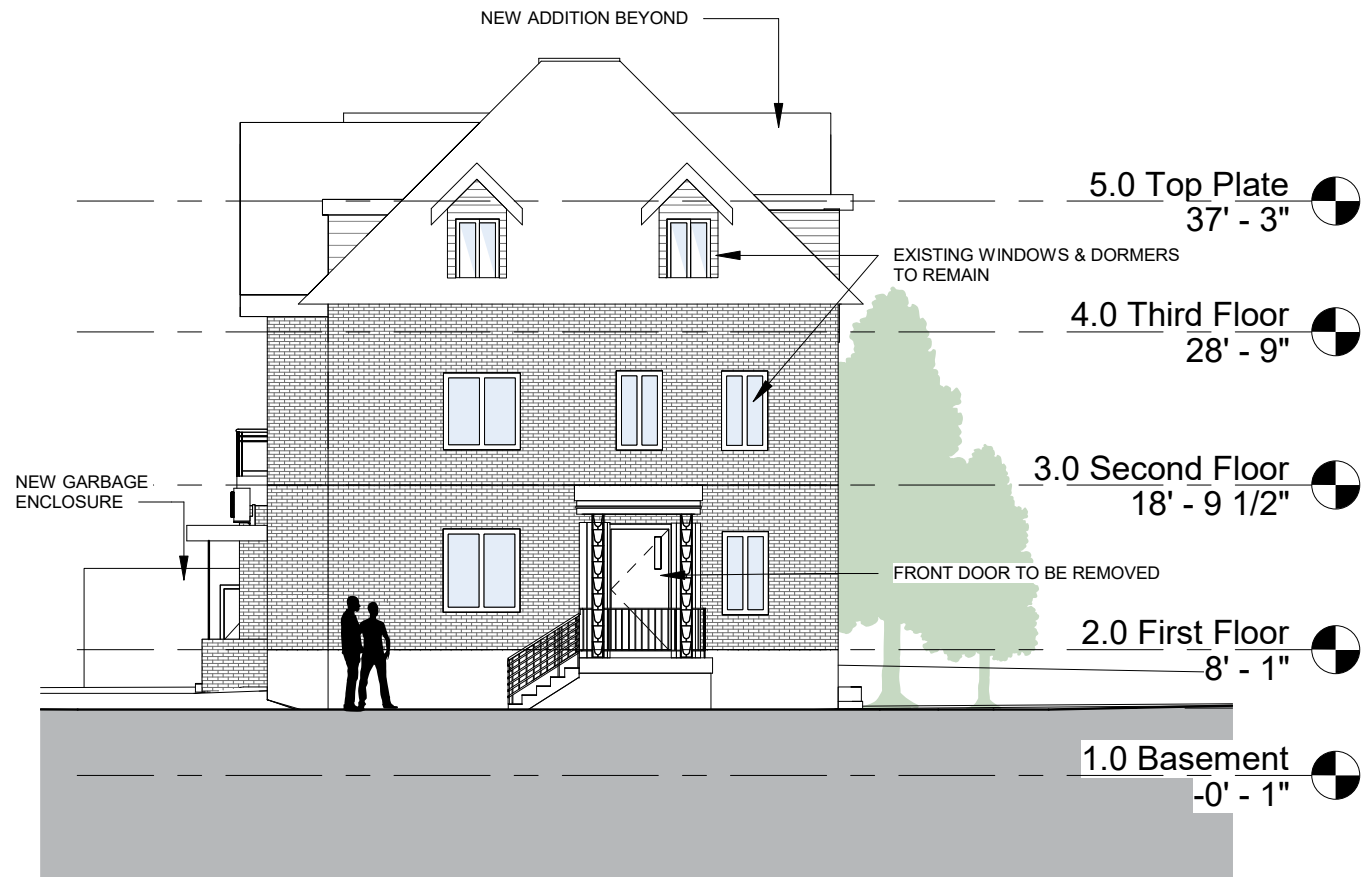
EXISTING BUILDING HEIGHT: 12.0m  
NEW ADDITION HEIGHT: 12.0m

**WILBROD APARTMENTS**  
**SITE PLAN APPROVAL**  
**EXISTING ELEVATION - WEST**

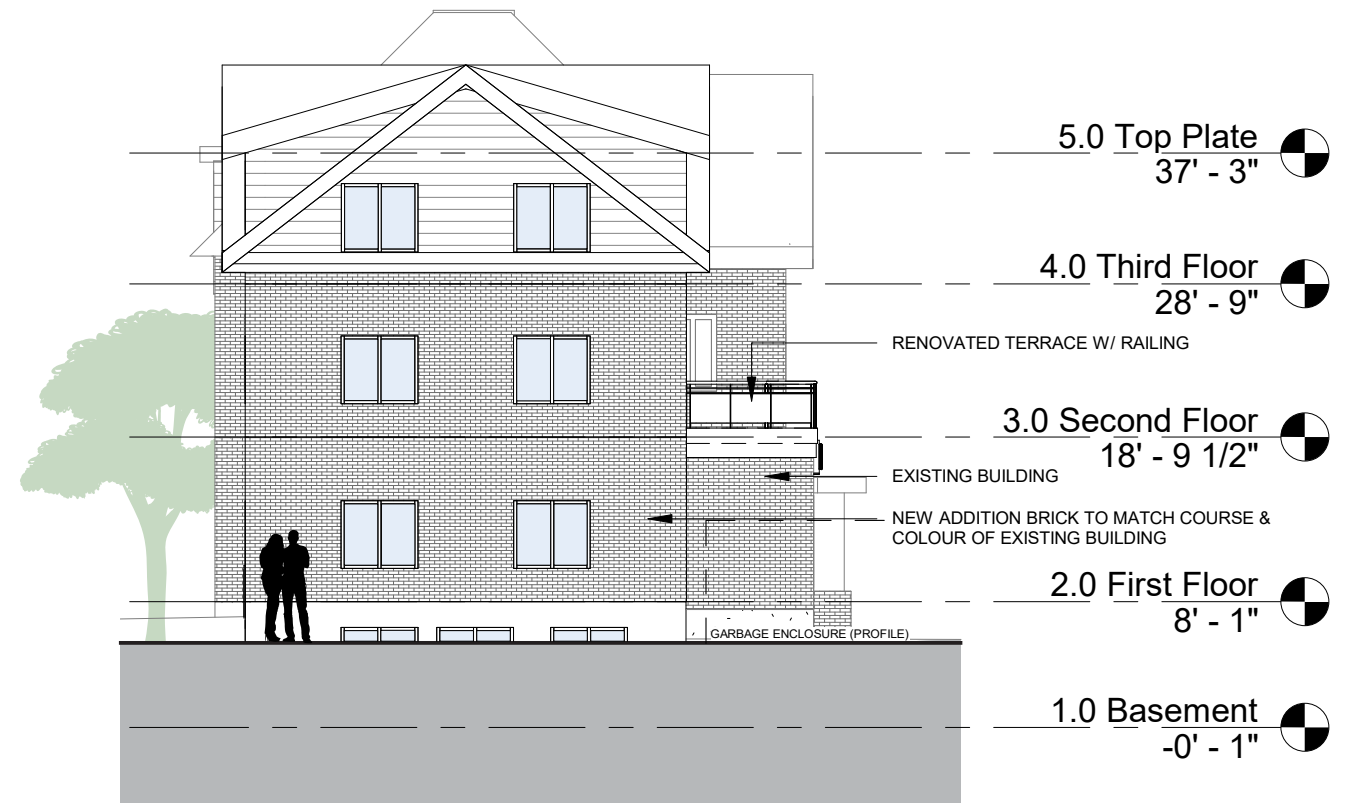
SCALE: 1 : 150  
MARCH 25TH, 2022



**ARCA-VERDE**  
**ARCHITECTURE INC.**  
243 Keyworth Avenue,  
Ottawa, Ontario, K1Y 0G2  
P: 613-702-5033  
www.Arca-Verde.ca



**NORTH ELEVATION - NEW**



**SOUTH ELEVATION - NEW**

EXISTING BUILDING HEIGHT: 12.0m  
 NEW ADDITION HEIGHT: 12.0m

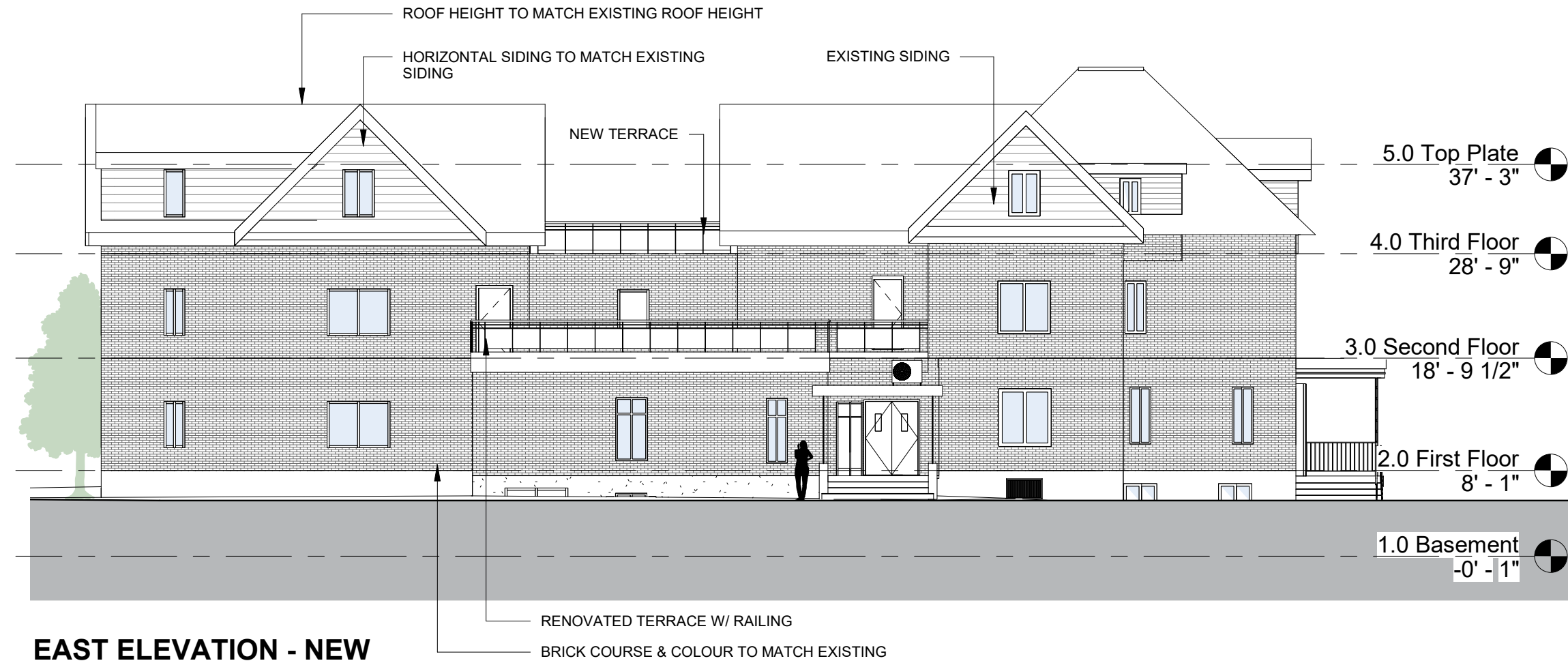
**WILBROD APARTMENTS**  
 SITE PLAN APPROVAL  
 ELEVATION - NORTH & SOUTH

SCALE: 1 : 150  
 MARCH 25TH, 2022



**ARCA-VERDE**  
 ARCHITECTURE INC.  
 243 Keyworth Avenue,  
 Ottawa, Ontario, K1Y 0G2  
 P: 613-702-5033  
 www.Arca-Verde.ca





EXISTING BUILDING HEIGHT: 12.0m  
 NEW ADDITION HEIGHT: 12.0m

**WILBROD APARTMENTS**  
 SITE PLAN APPROVAL  
 ELEVATION - EAST

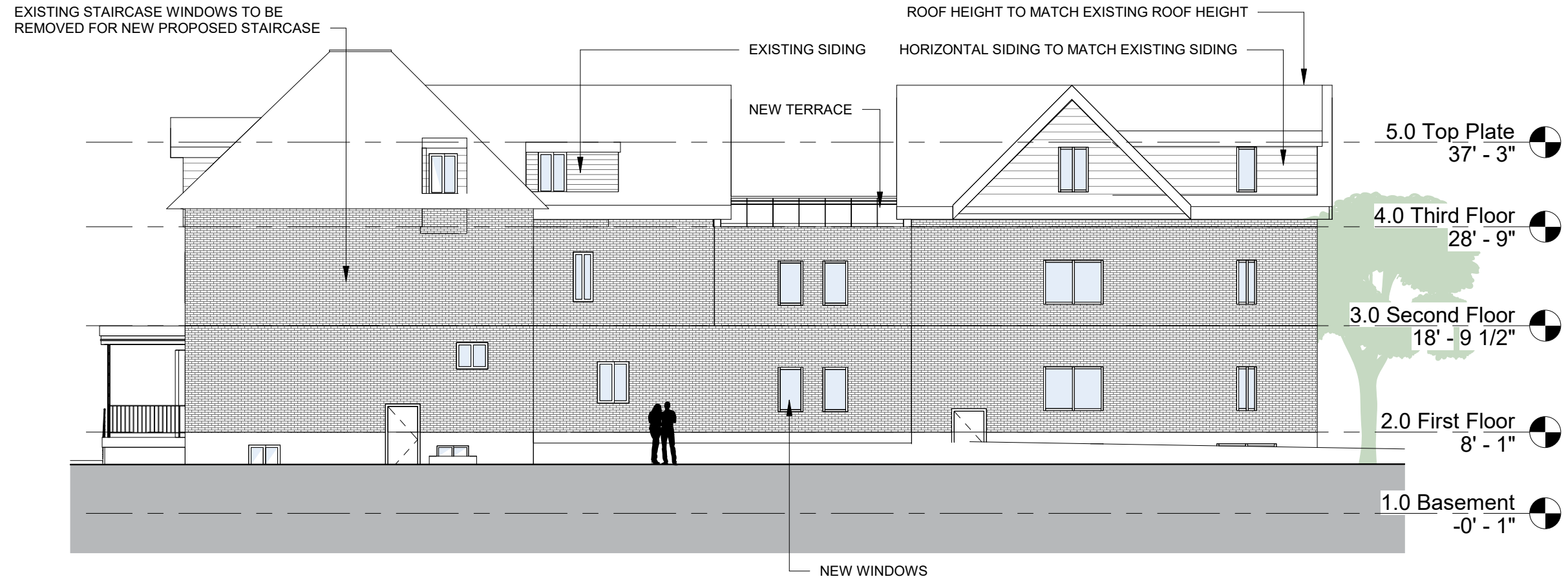
SCALE: 1 : 150  
 MARCH 25TH, 2022

11x17 SHEET SIZE



**ARCA-VERDE**  
**ARCHITECTURE INC.**  
 243 Keyworth Avenue,  
 Ottawa, Ontario, K1Y 0G2  
 P: 613-702-5033  
 www.Arca-Verde.ca

**SA-08**



**WEST ELEVATION - NEW**

EXISTING BUILDING HEIGHT: 12.0m  
 NEW ADDITION HEIGHT: 12.0m

**WILBROD APARTMENTS**  
 SITE PLAN APPROVAL  
 ELEVATION - WEST

SCALE: 1 : 150  
 MARCH 25TH, 2022

11x17 SHEET SIZE



**ARCA-VERDE**  
**ARCHITECTURE INC.**  
 243 Keyworth Avenue,  
 Ottawa, Ontario, K1Y 0G2  
 P: 613-702-5033  
 www.Arca-Verde.ca

**SA-09**





**WILBROD APARTMENTS**  
**SITE PLAN APPROVAL**  
**COLOUR RENDERING - EXISTING**

SCALE:  
MARCH 25TH, 2022

11x17 SHEET SIZE



**ARCA-VERDE**  
**ARCHITECTURE INC.**  
243 Keyworth Avenue,  
Ottawa, Ontario, K1Y 0G2  
P:613-702-5033  
[www.Arca-Verde.ca](http://www.Arca-Verde.ca)

**SA-10**





**WILBROD APARTMENTS**  
**SITE PLAN APPROVAL**  
**COLOUR RENDERINGS - NEW**

SCALE:  
MARCH 25TH, 2022

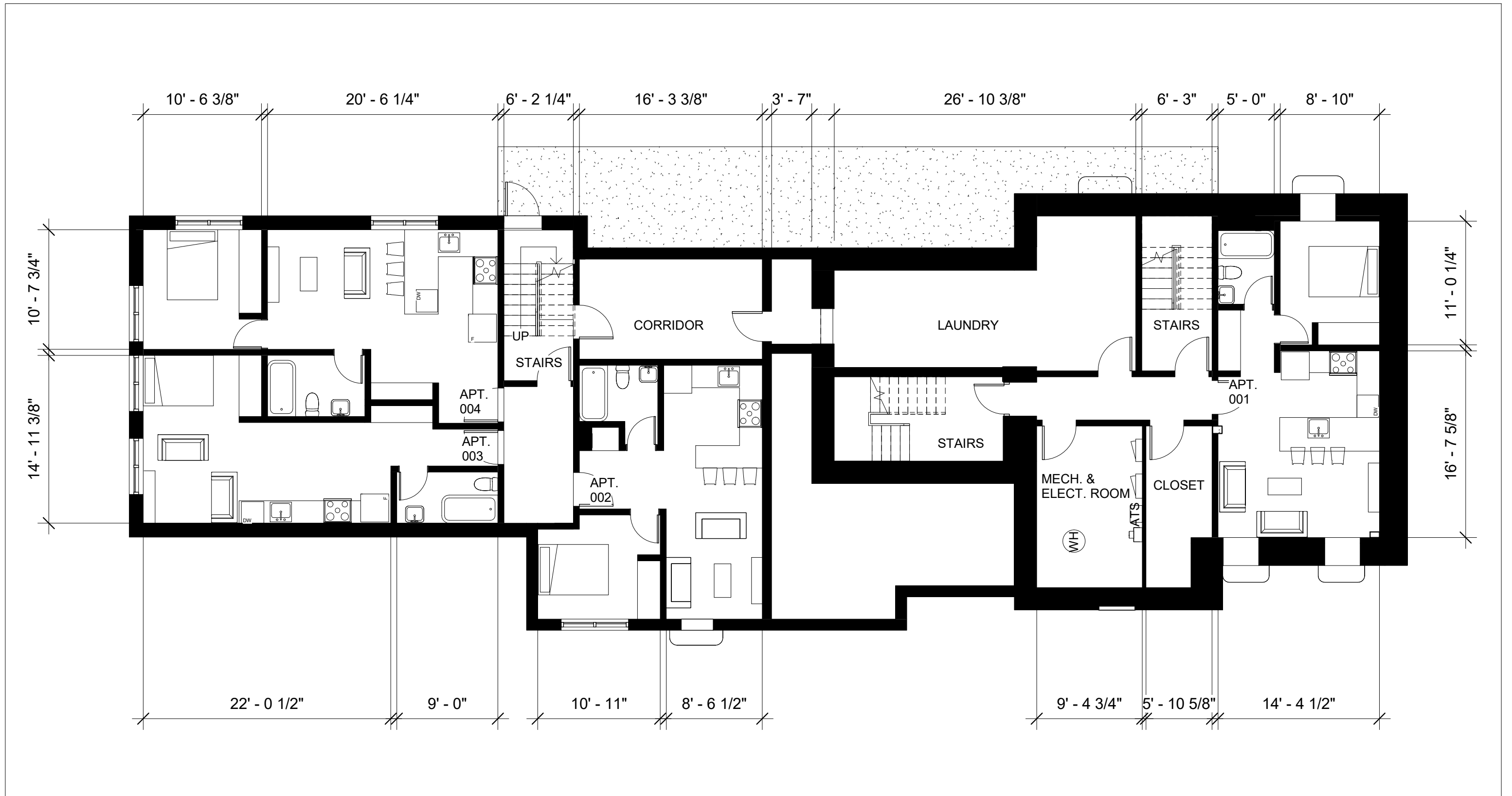
11x17 SHEET SIZE



**ARCA-VERDE**  
**ARCHITECTURE INC.**  
243 Keyworth Avenue,  
Ottawa, Ontario, K1Y 0G2  
P:613-702-5033  
[www.Arca-Verde.ca](http://www.Arca-Verde.ca)

**SA-11**





**WILBROD APARTMENTS**  
**SITE PLAN APPROVAL**  
**BASEMENT PLAN**

SCALE: 1 : 100

MARCH 25TH, 2022

11x17 SHEET SIZE



**ARCA-VERDE**  
**ARCHITECTURE INC.**  
243 Keyworth Avenue,  
Ottawa, Ontario, K1Y 0G2  
P: 613-702-5033  
www.Arca-Verde.ca

**SA-12**



**WILBROD APARTMENTS**  
**SITE PLAN APPROVAL**  
**GROUND FLOOR PLAN**

SCALE: 1 : 100  
MARCH 25TH, 2022

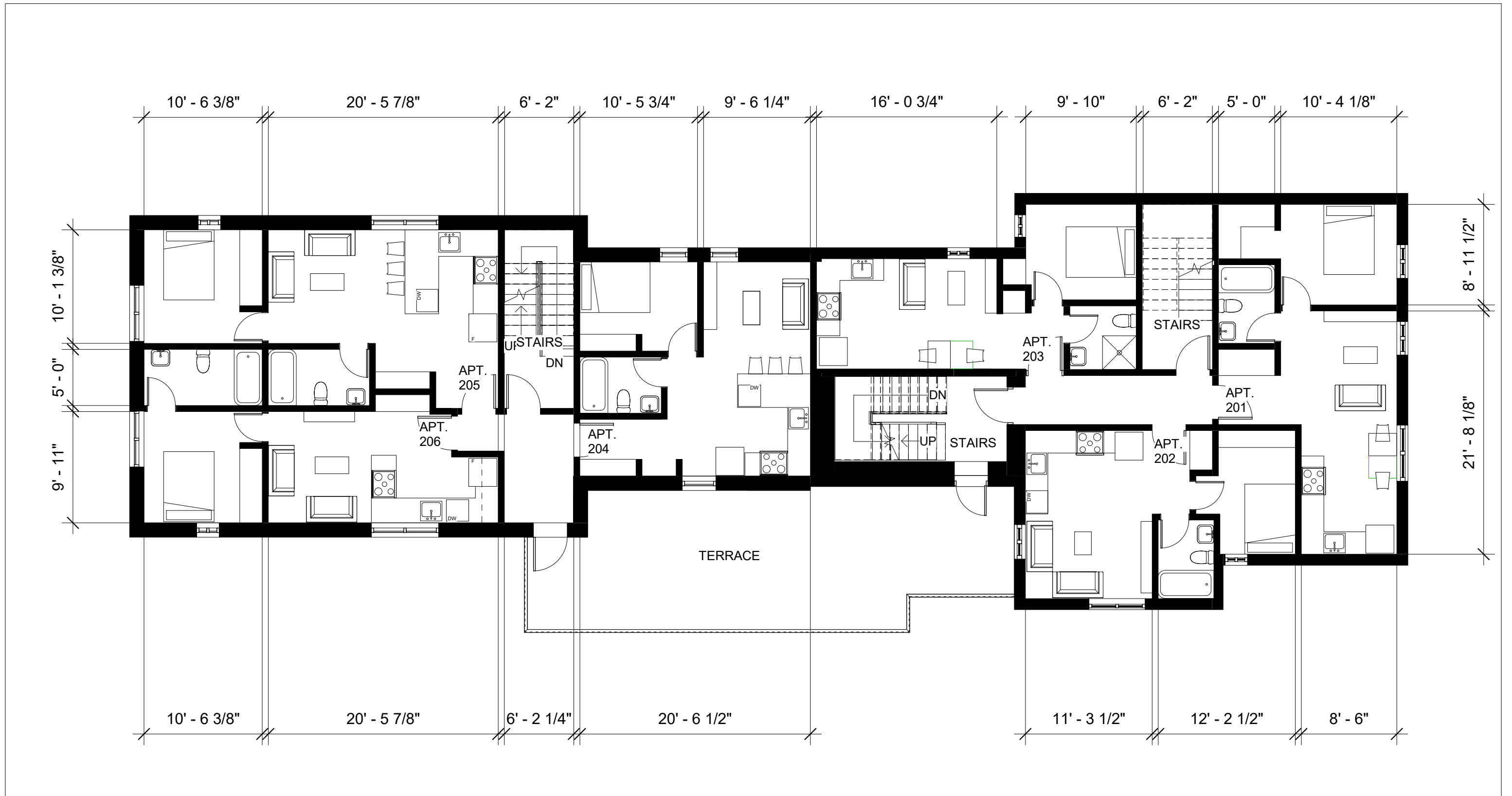
11x17 SHEET SIZE



**ARCA-VERDE**  
**ARCHITECTURE INC.**  
243 Keyworth Avenue,  
Ottawa, Ontario, K1Y 0G2  
P: 613-702-5033  
www.Arca-Verde.ca

**SA-13**



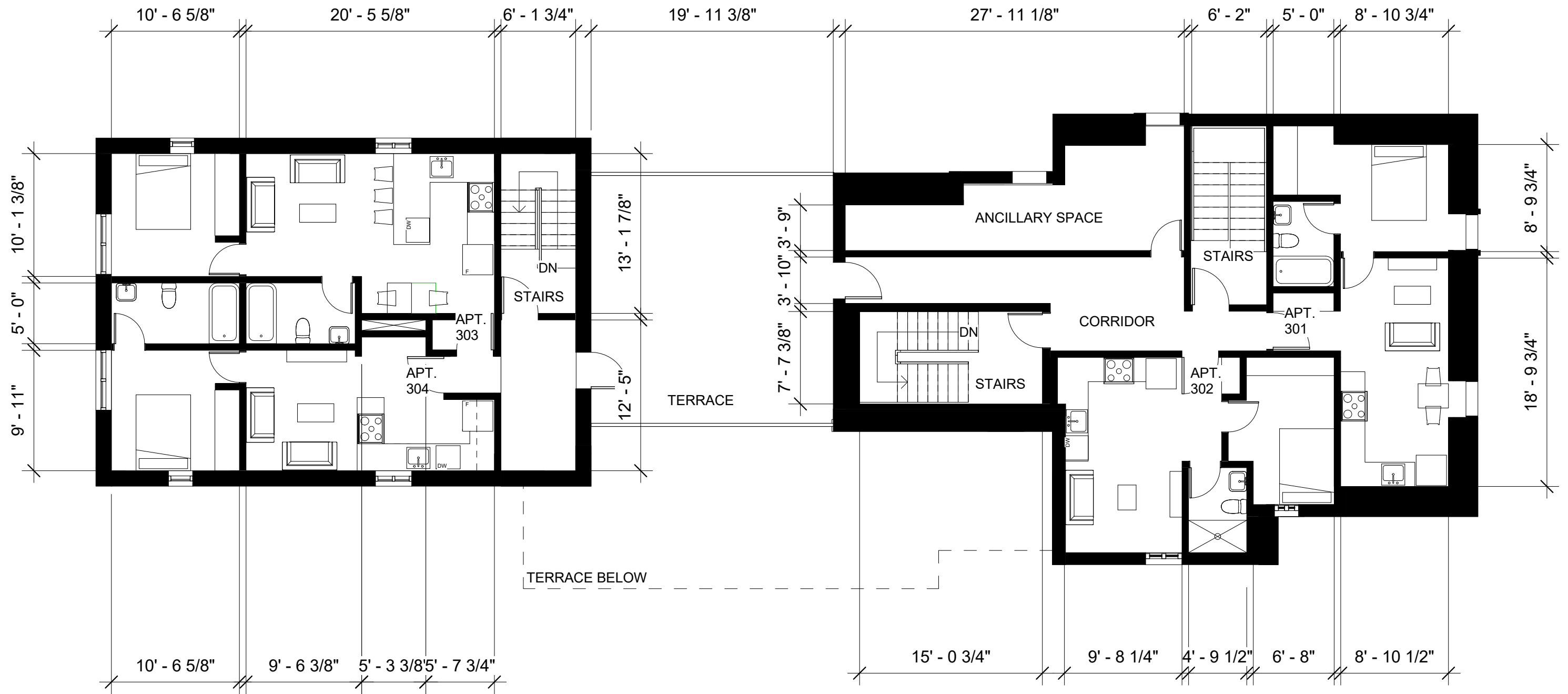


**WILBROD APARTMENTS**  
**SITE PLAN APPROVAL**  
**SECOND FLOOR PLAN**

SCALE: 1 : 100  
MARCH 25TH, 2022



**ARCA-VERDE**  
**ARCHITECTURE INC.**  
243 Keyworth Avenue,  
Ottawa, Ontario, K1Y 0G2  
P: 613-702-5033  
www.Arca-Verde.ca



**WILBROD APARTMENTS**  
**SITE PLAN APPROVAL**  
**THIRD FLOOR PLAN**

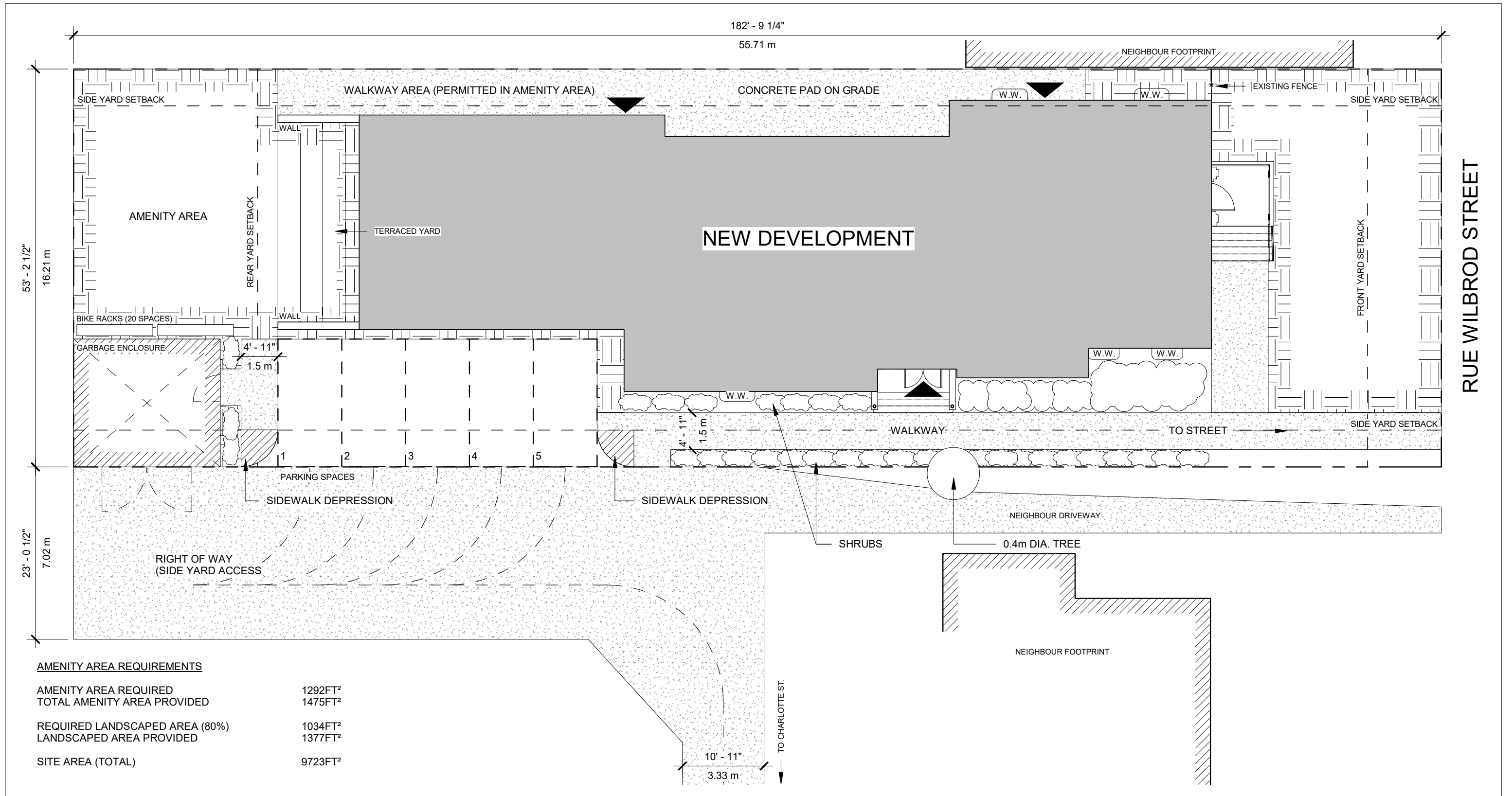
SCALE: 1 : 100  
 MARCH 25TH, 2022

11x17 SHEET SIZE



**ARCA-VERDE**  
**ARCHITECTURE INC.**  
 243 Keyworth Avenue,  
 Ottawa, Ontario, K1Y 0G2  
 P: 613-702-5033  
 www.Arca-Verde.ca

**SA-15**



# WILBROD APARTMENTS

## SITE PLAN APPROVAL

### LANDSCAPE PLAN

SCALE: 1 : 150

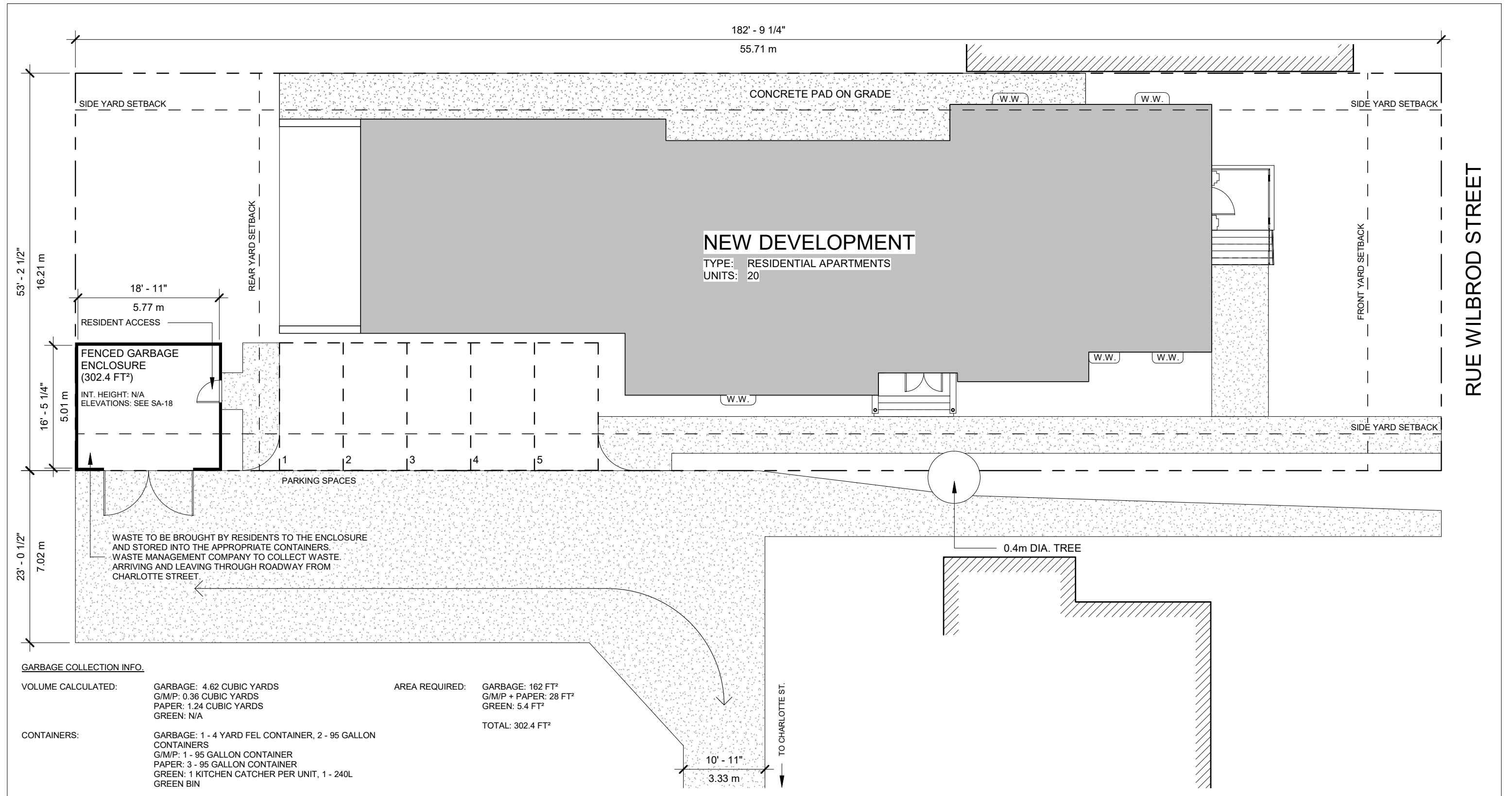
MARCH 25TH, 2022

11x17 SHEET SIZE



**ARCA-VERDE**  
**ARCHITECTURE INC.**  
 243 Keyworth Avenue,  
 Ottawa, Ontario, K1Y 0G2  
 P: 613-702-5033  
 www.Arca-Verde.ca

SA-16



GARBAGE COLLECTION INFO.

VOLUME CALCULATED: GARBAGE: 4.62 CUBIC YARDS  
G/M/P: 0.36 CUBIC YARDS  
PAPER: 1.24 CUBIC YARDS  
GREEN: N/A

CONTAINERS: GARBAGE: 1 - 4 YARD FEL CONTAINER, 2 - 95 GALLON CONTAINERS  
G/M/P: 1 - 95 GALLON CONTAINER  
PAPER: 3 - 95 GALLON CONTAINER  
GREEN: 1 KITCHEN CATCHER PER UNIT, 1 - 240L GREEN BIN

AREA REQUIRED: GARBAGE: 162 FT<sup>2</sup>  
G/M/P + PAPER: 28 FT<sup>2</sup>  
GREEN: 5.4 FT<sup>2</sup>  
TOTAL: 302.4 FT<sup>2</sup>

**WILBROD APARTMENTS**  
**SITE PLAN APPROVAL**  
**GARBAGE COLLECTION PLAN**

SCALE: 1 : 150  
MARCH 25TH, 2022

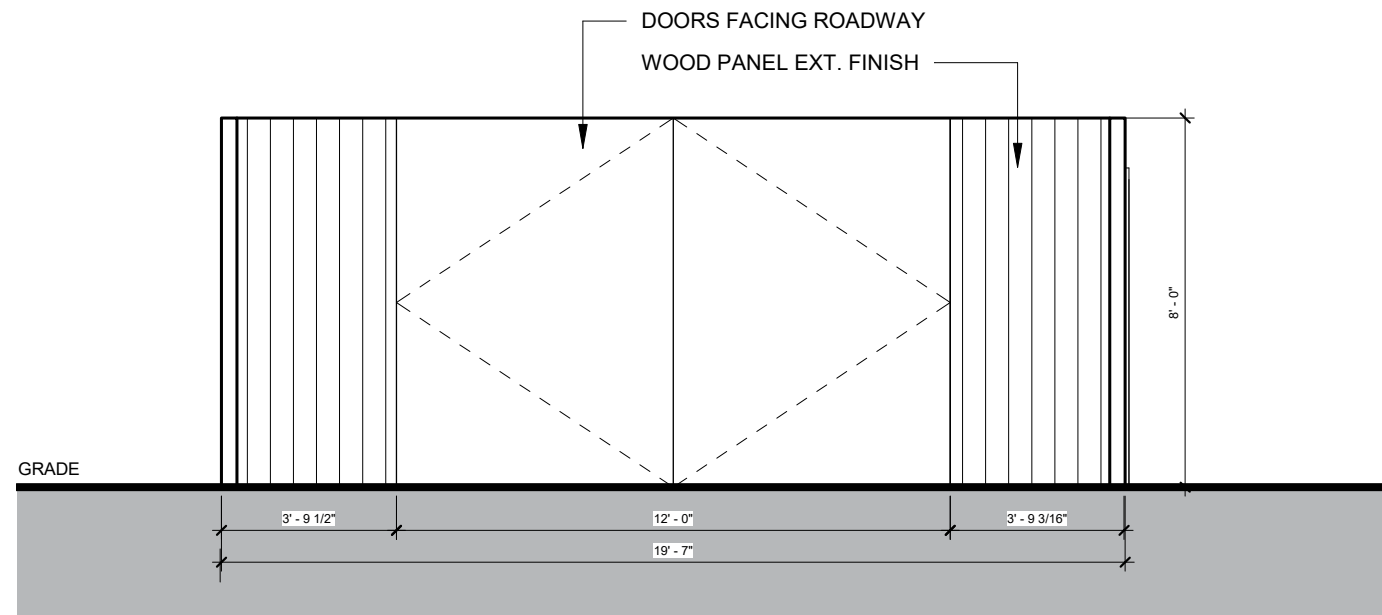
11x17 SHEET SIZE



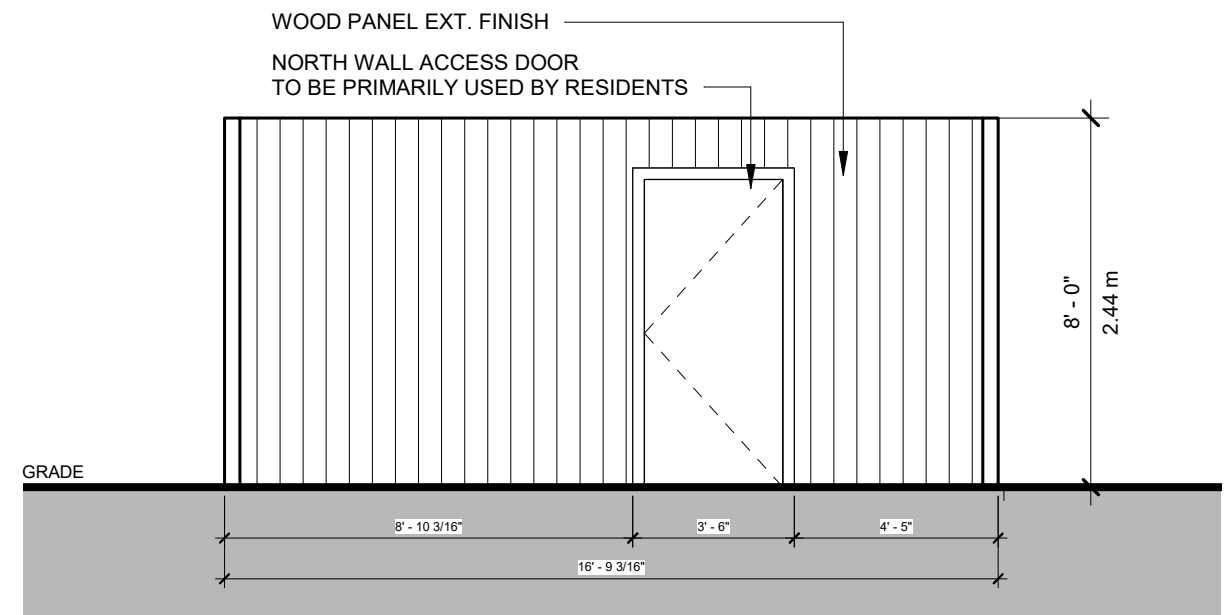
**ARCA-VERDE**  
**ARCHITECTURE INC.**  
243 Keyworth Avenue,  
Ottawa, Ontario, K1Y 0G2  
P: 613-702-5033  
www.Arca-Verde.ca

**SA-17**

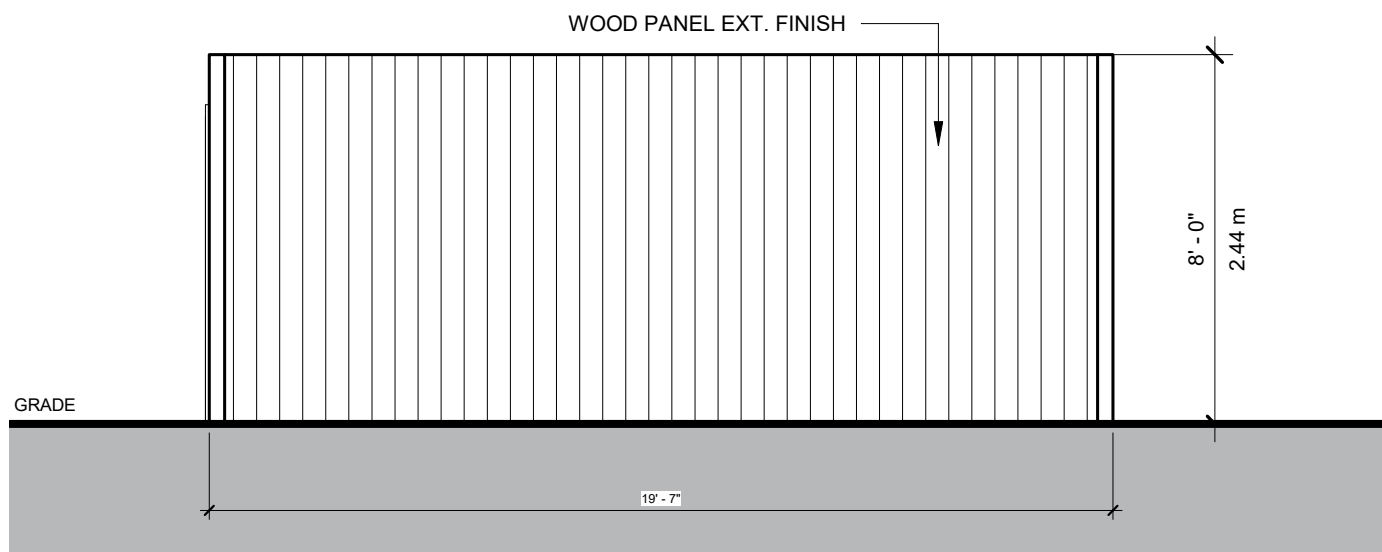




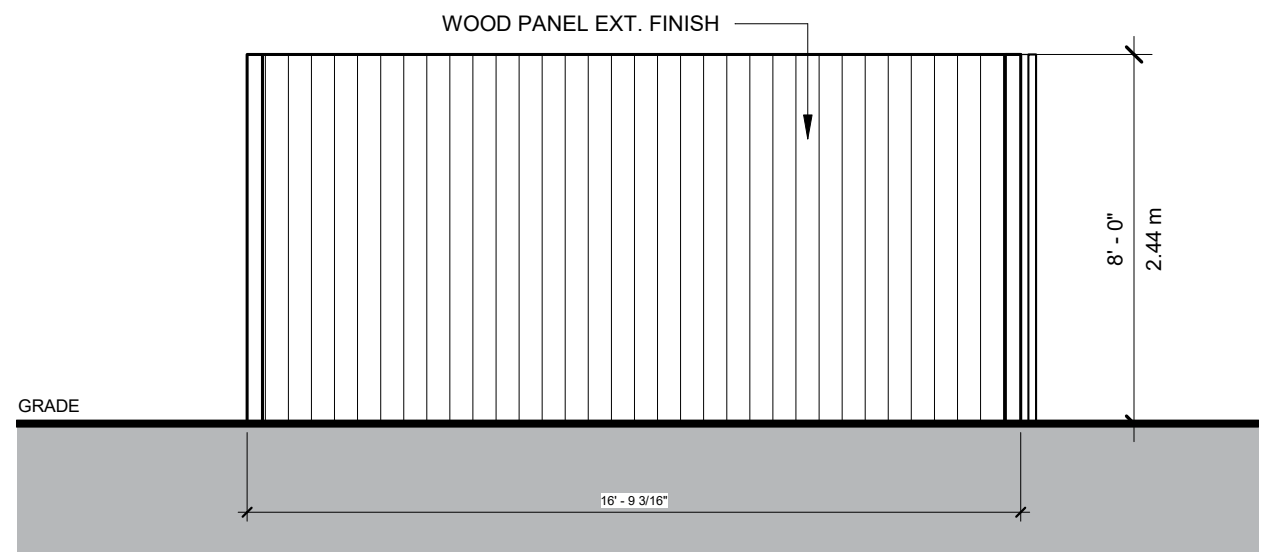
EAST ELEVATION



NORTH ELEVATION



WEST ELEVATION



SOUTH ELEVATION

**WILBROD APARTMENTS**  
**SITE PLAN APPROVAL**  
**GARAGE ENCLOSURE ELEVATIONS**

SCALE: 1 : 50

MARCH 25TH, 2022

11x17 SHEET SIZE



**ARCA-VERDE**  
**ARCHITECTURE INC.**  
 243 Keyworth Avenue,  
 Ottawa, Ontario, K1Y 0G2  
 P:613-702-5033  
 www.Arca-Verde.ca

**SA-18**

**ZONING COMPLIANCE CHART - 476 WILBROD ADDITION**

<u>CLAUSE</u>	<u>NAME/ TOPIC</u>	<u>REQUIREMENTS</u>	<u>RESPONSE</u>
137	AMENITY AREA	- 15m <sup>2</sup> PER UNIT, UP TO 8 UNITS - PLUS 6m <sup>2</sup> PER UNIT IN EXCESS OF 8 (REQUIREMENTS FIRST 8 UNITS) WITHIN REAR YARD AT GRADE - 80% SOFT LANDSCAPED	NO ACTION SPACE IS ACCOMMODATED FOR WITHIN REAR YARD AND ROOF TOP TERRACES
111	BIKE STORAGE	- 1 BIKE STORAGE AREA PER UNIT - LOCATED WITHIN REAR YARD OR INSIDE BUILDING	20 BIKE PARKING/ STORAGE AREAS ACCOMMODATED WITHIN REAR YARD
107	PARKING CLEARANCE	FOR PARKING ARRANGED 71-90°; MINIMUM 6.7m AISLE REQUIRED	NO ACTION EXISTING AISLE EXCEEDS MINIMUM
109 (3)	PARKING LOCATION	PARKING SPACE CANNOT BE LOCATED WITHIN FRONT YARD AND CORNER SIDE	NO ACTION PROPOSED PARKING WITHIN REAR AND SIDE YARD
65	PERMITTED PROJECTIONS	1. CHIMNEY, CHIMNEY BOX, FIREPLACE 2. EAVES, EAVES-TROPHS, GUTTERS 3. ORNAMENTAL ELEMENTS 4. CANOPIES AND AWNINGS 5. FIRE ESCAPES, OPEN STAIRWAYS ETC. 6. COVERED OR UNCOVERED BALCONY 7. BAY WINDOWS 8. AIR CONDITIONER CONDENSER 9. CARPORTS (BEFORE 2008-10-08)	1. NO CHIMNEYS, ETC. IN PROPOSAL 2. EAVES-TROPH IS >0.6m TO A LOT LINE 3. NO ORNAMENTAL ELEMENTS IN PROPOSAL 4. ALL PROJECTIONS ARE WITHIN SITE SETBACKS 5. EXTERIOR STAIRS ARE LOCATED WITHIN INTERIOR SIDE YARD, NO LIMIT 6. ROOF TERRACES DO NOT PROJECT INTO SETBACKS 7. NO BAY WINDOWS IN PROPOSAL 8. NO EXTERIOR A/C UNITS 9. TBD
60	HERITAGE OVERLAY	FOR ADDITIONS; 1. HEIGHT OF WALLS AND ROOF SLOPES MATCH 2. LOCATED ENTIRELY WITHIN REAR YARD 3. ADDITIONAL SETBACK OF 60cm FROM THE NEAREST WALL TO SIDE LOT LINES	1. ADDITION MATCHES EXISTING WALL HEIGHTS AND ROOF SLOPES 2. ADDITION IS LOCATED WITHIN REAR YARD 3. ADDITION DIMENSIONS ADJUSTED TO MEET REQUIREMENT
164	SIDE SETBACKS	SETBACK WITHIN 21m = 1.5m SETBACK PAST 21m = 6.0m	MINOR VARIANCE REQUIRED

**WILBROD APARTMENTS**  
**SITE PLAN APPROVAL**  
**ZONING CHART**

SCALE:

MARCH 25TH, 2022

11x17 SHEET SIZE



**ARCA-VERDE**  
**ARCHITECTURE INC.**  
 243 Keyworth Avenue,  
 Ottawa, Ontario, K1Y 0G2  
 P:613-702-5033  
 www.Arca-Verde.ca

SA-19