

PART OF LOT 1
CONCESSION 5 (RIDEAU FRONT)
Geographic Township of Nepean
CITY OF OTTAWA

Surveyed by Annis, O'Sullivan, Vollebek Ltd.

Plan Amended September 7, 2017 to illustrate additional services.

Scale 1 : 250



Metric
DISTANCES SHOWN ON THIS PLAN ARE IN METRES AND
CAN BE CONVERTED TO FEET BY DIVIDING BY 0.3048

Surveyor's Certificate

- I CERTIFY THAT:
1. This survey and plan are correct and in accordance with the Surveys Act, the Surveyors Act and the Land Titles Act and the regulations made under them.
2. The survey was completed on the 1st day of August, 2017.

Date: Andrew J. Broxham, Ontario Land Surveyor



Notes & Legend

- Denotes Survey Monument Planted
Survey Monument Found
Standard Iron Bar
Short Standard Iron Bar
Iron Bar
0.3m Long Survey Monument
Witness
Annis, O'Sullivan, Vollebek Ltd.
Measure
Plan 4R-29078
Maintenance Hole (Storm Sewer)
Maintenance Hole (Sanitary)
Maintenance Hole (Bell)
Underground Storm Sewer
Underground Sanitary Sewer
Underground Water
Underground Power
Underground Bell
Light Standard
Catch Basin
Fire Hydrant
Valve Chamber - Watermain
Top of Grate
Fire Hydrant Valve
Bell Terminal Box
Deciduous Tree
Coniferous Tree
Board Fence
Bottom of Slope
Top of Slope
Metal Pole
Fire Main Indicator Post
Diameter
Location of Elevations
Centreline
Monitoring Well
Metal Fence Post

ALL FOUND SURVEY MONUMENTS ARE (AOG) UNLESS OTHERWISE NOTED.

ALL BEARINGS AND DISTANCES ARE PER (P1) UNLESS OTHERWISE NOTED.

Bearings are grid bearings, derived from the Southern Limit of St. Laurent Boulevard, shown to be N59°32'20"E on Plan 4R-29078 and are referred to the Central Meridian of MTM Zone 9 (76°30' West Longitude) NAD-83 (original).

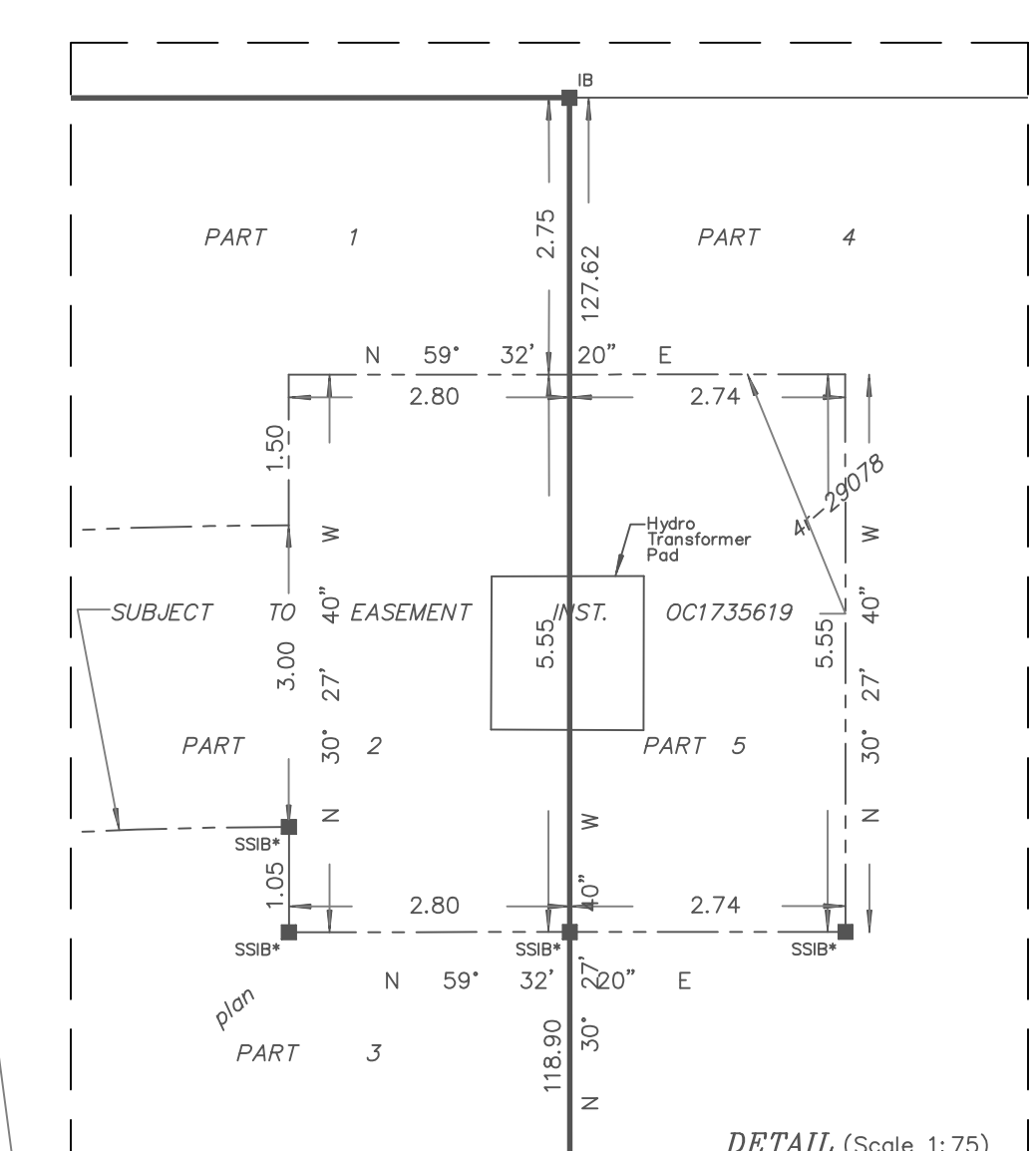
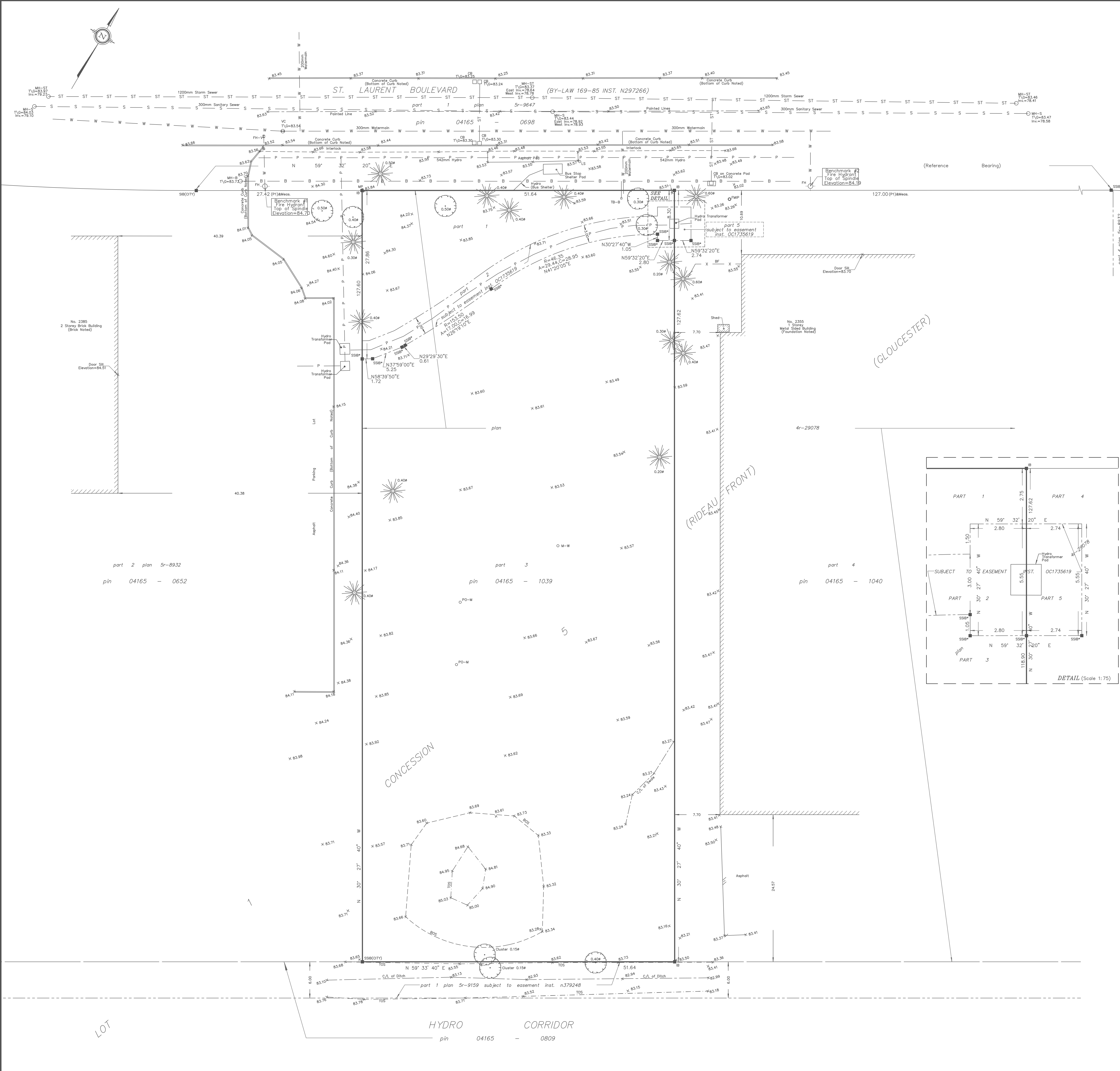
SITE AREA = 6589.8 m²

ELEVATION NOTES

- 1. Elevations shown are geodetic and are referred to the CGVD28 geodetic datum.
2. It is the responsibility of the user of this information to verify that the job benchmark has not been altered or disturbed and that its relative elevation and description agrees with the information shown on this drawing.

UTILITY NOTES

- 1. This drawing cannot be accepted as acknowledging all of the utilities and it will be the responsibility of the user to contact the respective utility authorities for confirmation.
2. Only visible surface utilities were located.
3. A field location of underground plant by the pertinent utility authority is mandatory before any work involving breaking ground, probing, excavating, etc.
4. Location of underground buried services, pipe diameters and inverts are derived from City of Ottawa Engineering Plan No. 2304, (sheet 4 of 8) and City of Ottawa Utility Sheets M-19-17 (rev. date August 2017) and M-19-22 (rev. date August 2017).



part 2 plan 5r-8932
pin 04165 - 0652

part 3
pin 04165 - 1039

part 4
pin 04165 - 1040

HYDRO CORRIDOR
pin 04165 - 0809

LOT