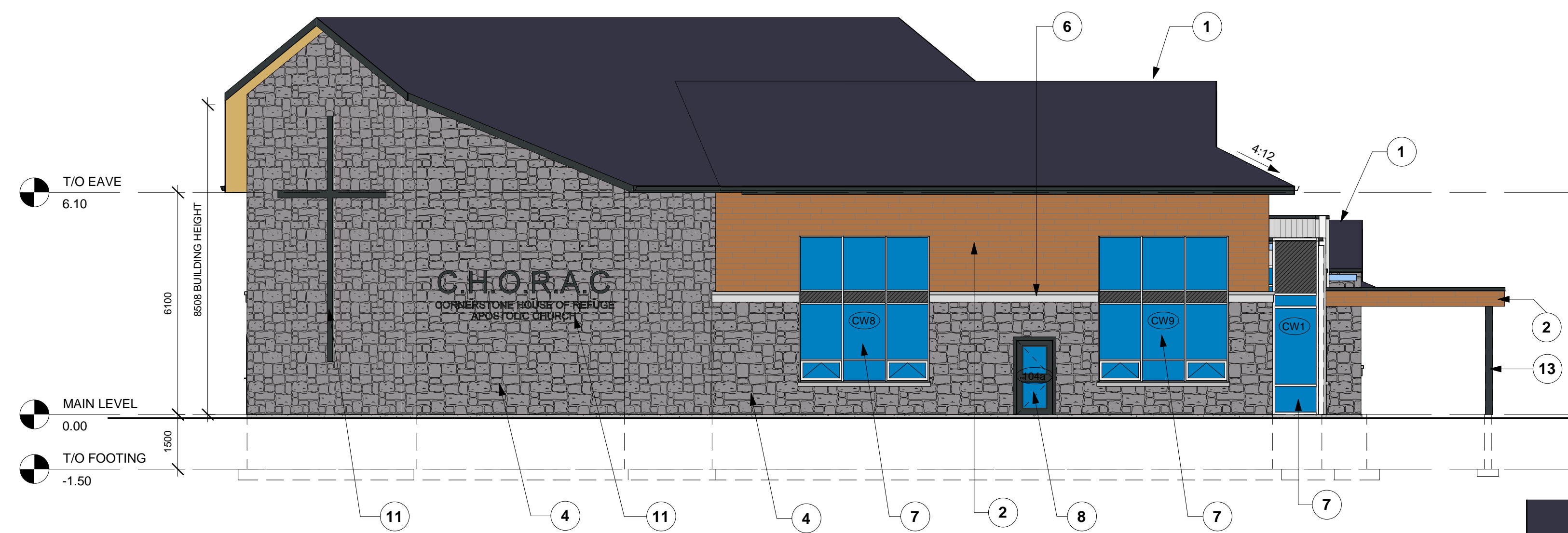
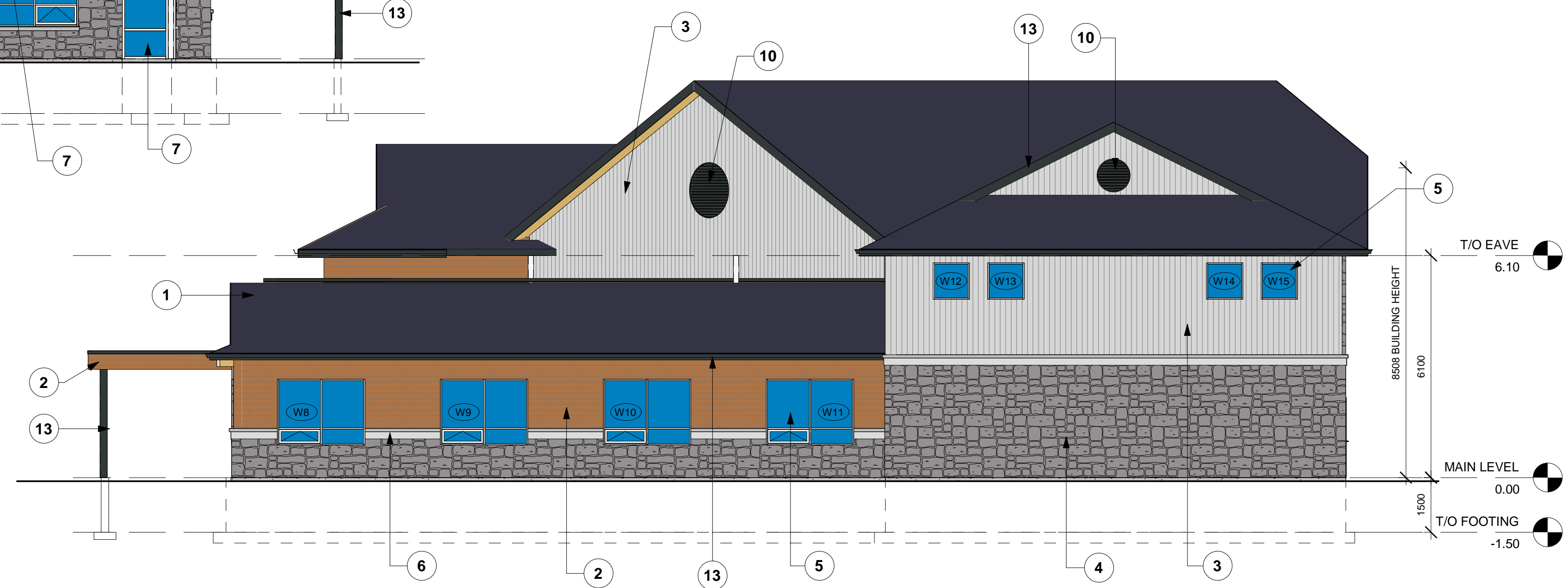


0 1 2 3 4 5 6 7 8 9 100

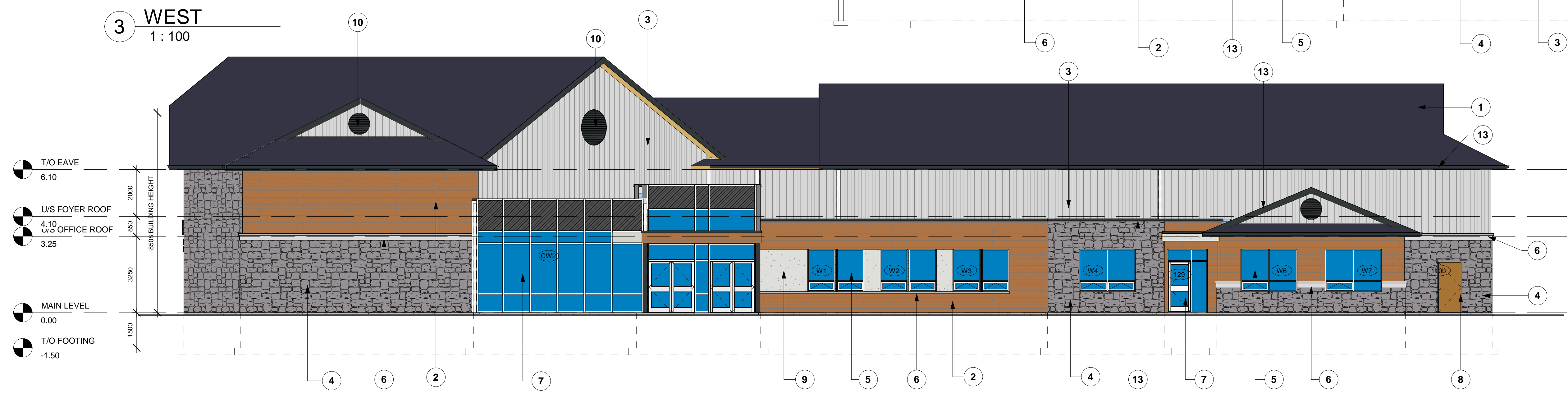
MATERIAL LEGEND	
VALUE	MATERIAL DESCRIPTION
1	ASPHALT SHINGLES - TIMBERLINE HD CHARCOAL
2	SIDING - PREFINISHED ALUMINUM PANEL - WOOD GRAIN (WALNUT)
3	SIDING - HARDIE PANEL VERT. SIDING SELECT CEDAR MILL BOARD & BATTEN AND TRIM - MONTEREY TAUPÉ
4	STONE MASONRY VENEER - PERMACON LAFITTE STONE - RANGE NEWPORT GREY
5	CLEAR ANODIZED ALUMINUM WINDOWS CW CLEAR FLOAT DOUBLE GLAZING
6	PRECAST ARCHITECTURAL STONE TRIM
7	ENTRANCE WINDOWS - WHITE PREFINISHED THERMAL BROKEN ALUMINUM STOREFRONT SYSTEM W/ DOUBLE-GLAZED INSULATED CLEAR GLASS
8	DOORS - HOLLOW METAL INSULATED DOOR & FRAME WHITE
9	STUCCO - CHARCOAL, COLOUR TO MATCH FACIA
10	LOUVERS - FIPON DECORATIVE ROUND LOUVER CHARCOAL
11	SIGNAGE - PREFINISHED ALUMINUM CHARCOAL
12	POURED CONCRETE FOOTING & FOUNDATIONS
13	FASCIA, GUTTER, DOWNSPOUTS & SOFFIT - PREFINISHED ALUMINUM CHARCOAL
14	FINISHED GRADE AT BUILDING



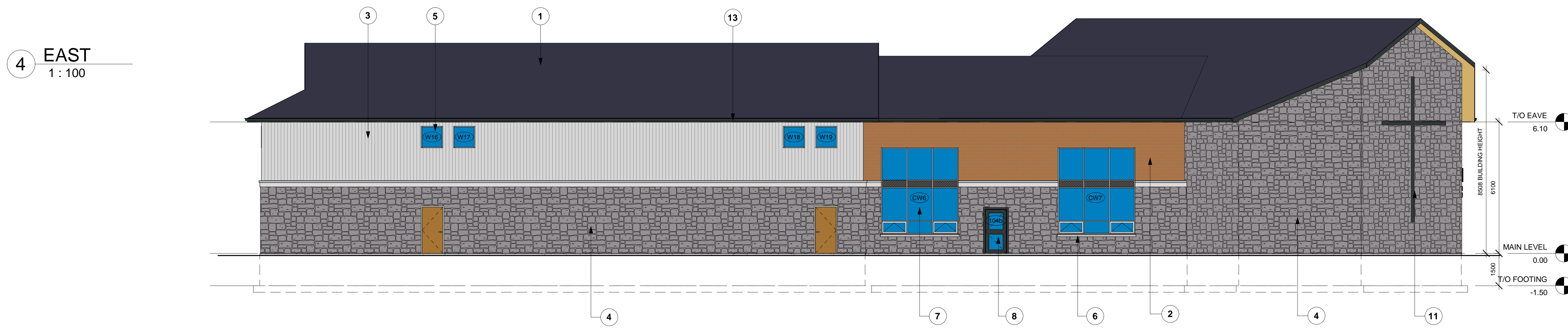
1 NORTH  
1 : 100



2 SOUTH  
1 : 100



3 WEST  
1 : 100



4 EAST  
1 : 100

no.	ISSUED FOR SPA	2022-02-28	KR
revisions	date	init.	

GENERAL NOTE:  
THESE DRAWINGS ARE COPYRIGHT AND THE PROPERTY OF REINDERS + LAW LTD. THE DRAWINGS MAY NOT BE USED FOR CONSTRUCTION WITHOUT THE PERMISSION OF REINDERS + LAW LTD. AND UNLESS SEALED AND SIGNED BY THE ARCHITECT/ENGINEER. REPRODUCTION OF THESE DRAWINGS WITHOUT THE CONSENT OF REINDERS + LAW IS STRICTLY PROHIBITED.

DO NOT SCALE THESE DRAWINGS. ANY ERROR OR DISCREPANCY IS TO BE REPORTED IMMEDIATELY TO: REINDERS + LAW LTD.

date plotted : 09/25/17 plot scale : 1:1

drawn : LC  
 designed : GDR  
 reviewed : KR  
 date : 09/25/17  
 scale : 1 : 100

project :  
 C.H.O.R.A.C.  
 2375 St. Laurent Blvd, Ottawa ON

drawing :  
 BUILDING ELEVATIONS

**REINDERS + LAW**  
 ARCHITECTURE . ENGINEERING

**REINDERS + LAW LTD.**  
 Architects, Consulting Engineers & Project Managers  
 64 ONTARIO STREET NORTH  
 MILTON, ON, L9T 2T1  
 T. 905.457.1618 F. 905.457.8852  
 WWW.REINDERS.CA

drawing no. : 20037\_A200 rev. no. : 0

SHEET SIZE: A1 608.6mm x 914.4mm