

SITE STATISTICS

Table with 3 columns: ITEM, ZONING BYLAW REQUIREMENTS, and PROPOSAL. Rows include ZONING CATEGORY, LOT AREA, LOT WIDTH, GROUND FLOOR AREA, LOT COVERAGE, FRONT YD., REAR YARD, INT. SIDE YARD - WEST, INT. SIDE YARD - EAST, NUMBER OF PARKING SPACES, NUMBER OF ACCESSIBLE PARKING SPACES, PARKING STALL DIMENSIONS, ACCESSIBLE PARKING DIMENSIONS, ACCESSIBLE ADJACENT ACCESSIBLE ISLE DIM., PERCENTAGE OF LOT LANDSCAPED, BUILDING HEIGHT, and ASPHALT AREA.

TOPOGRAPHICAL PLAN OF SURVEY

PART OF LOT 1 CONCESSION 5 (RIDEAU FRONT) Geographic Township of Nepean CITY OF OTTAWA Surveyed by Annis, O'Sullivan, Vollebek Ltd. Plan Amended September 7, 2017 to illustrate additional services.

OWNERS

OWNERS NAME: The CornerStone House of Refuge Apostolic Church (CHORAC) ADDRESS: 1196 Wellington St. West, Ottawa, ON, K1Y 2Z5 (613) PHONE #: 725-1432

APPLICANT

REINDERS + LAW LTD. 64 ONTARIO STREET NORTH, MILTON ON L9T 2T1 P (905)457-1618 F (905)457-8852

LEGEND:

- PROPERTY LINE
BUILDING SETBACK LINE
PROPOSED FIRE ROUTE (USING HEAVY DUTY PAVING)
LIGHT DUTY PAVING
CONCRETE PAD OR SIDEWALK
PROPOSED CONCRETE CURB
PROPOSED CONCRETE CURB WITH CURB CUT OR DEPRESSION CURB
NEW BUILDING AREA (FOOTPRINT)
PRINCIPAL BUILDING ENTRANCE
SECONDARY BUILDING ENTRANCE OR EGRESSES
FIRE ROUTE SIGNS
BARRIER FREE SIGNS (RB93)
BARRIER FREE LOGO (PAVED ON ASPHALT SURFACES (AODD COMPLIANT))
PROPOSED CATCHBASIN AND STRUCTURE
PROPOSED DOUBLE CATCHBASIN AND STRUCTURE
PROPOSED MANHOLE
EXISTING CATCHBASIN AND MANHOLE
PROPOSED CATCHBASIN AND MANHOLE
FIRE HYDRANT (EXISTING)

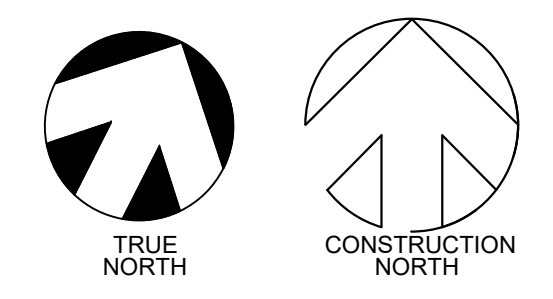
FIRM NAME: REINDERS + LAW LTD. CERTIFICATE OF PRACTICE NUMBER: 6141 BCN NUMBER: 23113 64 ONTARIO STREET NORTH MILTON, ON L9T 2T1 (905) 457-1618

Table with 2 columns: ITEM and OBC REFERENCE. Rows include PROJECT DESCRIPTION, MAJOR OCCUPANCY, BUILDING AREA, GROSS AREA, NUMBER OF STOREYS, NUMBER OF STREETS/FIRE FIGHTER ACCESS, BUILDING CLASSIFICATION, SPRINKLER SYSTEM, STANDPIPE, FIRE ALARM, WATER SERVICE, HIGH BUILDING, PERMITTED CONSTRUCTION, ACTUAL CONSTRUCTION, MEZZANINE(S) AREA, OCCUPANT LOAD, BARRIER-FREE DESIGN, HAZARDOUS SUBSTANCES, REQUIRED FIRE RESISTANCE RATING, SPATIAL SEPARATION, and PLUMBING FIXTURES.

Table with 2 columns: ITEM and OBC REFERENCE. Rows include MAJOR OCCUPANCY, BUILDING AREA, GROSS AREA, NUMBER OF STOREYS, NUMBER OF STREETS/FIRE FIGHTER ACCESS, BUILDING CLASSIFICATION, SPRINKLER SYSTEM, STANDPIPE, FIRE ALARM, WATER SERVICE, HIGH BUILDING, PERMITTED CONSTRUCTION, ACTUAL CONSTRUCTION, MEZZANINE(S) AREA, OCCUPANT LOAD, BARRIER-FREE DESIGN, HAZARDOUS SUBSTANCES, REQUIRED FIRE RESISTANCE RATING, SPATIAL SEPARATION, and PLUMBING FIXTURES.

PAVEMENT

FOR PAVEMENT AREAS SUBJECT TO CARS AND LIGHT TRUCKS, THE PAVEMENT SHOULD CONSIST OF: 50mm SUPERPAVE 12.5 ASPHALTIC CONCRETE OVER 150mm OPSS GRANULAR A BASE OVER 300mm OPSS GRANULAR B, TYPE II SUB-BASE OVER (50mm OR 100mm MINUS CRUSHED STONE) NON-WOVEN GEOTEXTILE FABRIC (4 oz./sq. yd.) SUCH AS TERRAFIX 270R OR THRACE-LING 130EX OR APPROVED ALTERNATIVE



0 ISSUED FOR SITE PLAN APPROVAL 2022-02-28 KR no. revisions date INTL.

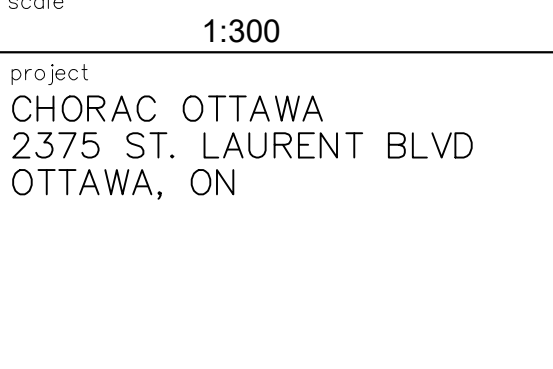
Table with 2 columns: no. revisions and date. Row 1: 0, 2022-02-28, KR

GENERAL NOTE: THESE DRAWINGS ARE COPYRIGHT AND THE PROPERTY OF REINDERS + LAW LTD. THE DRAWINGS MAY NOT BE USED FOR CONSTRUCTION WITHOUT THE PERMISSION OF REINDERS + LAW LTD. AND UNLESS SEALED AND SIGNED BY THE ARCHITECT/ENGINEER REPRODUCTION OF THESE DRAWINGS WITHOUT THE CONSENT OF REINDERS + LAW LTD. IS STRICTLY PROHIBITED.

cad file 20037\_SP1 date plotted 2022-02-28 plot scale 1:1

drawn SH designed KR reviewed KR date 2022-02-28 scale 1:300 project CHORAC OTTAWA 2375 ST. LAURENT BLVD OTTAWA, ON

drawing ARCHITECTURAL SITE PLAN



drawing no. 20037\_SP1 rev. no. 0