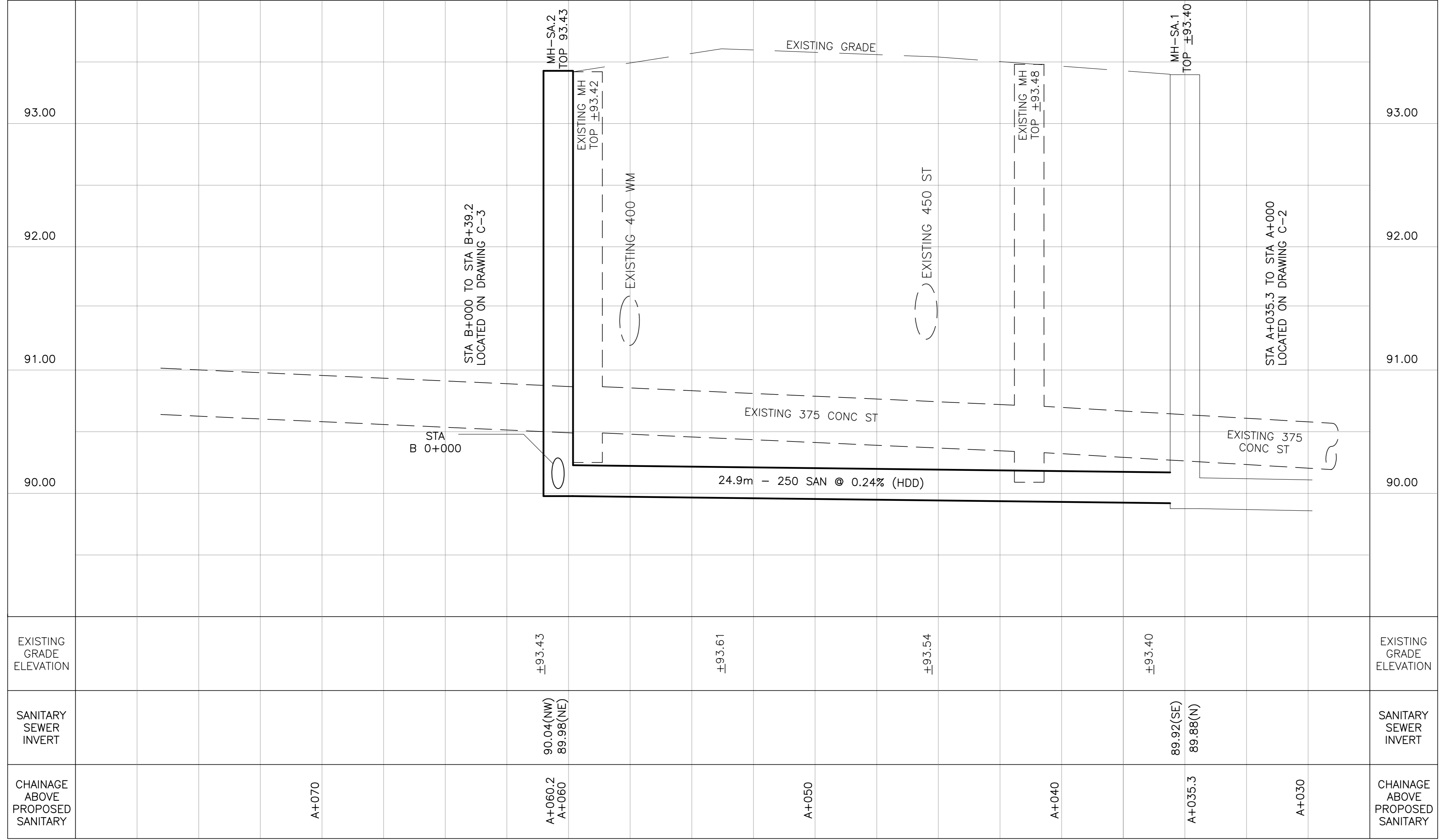
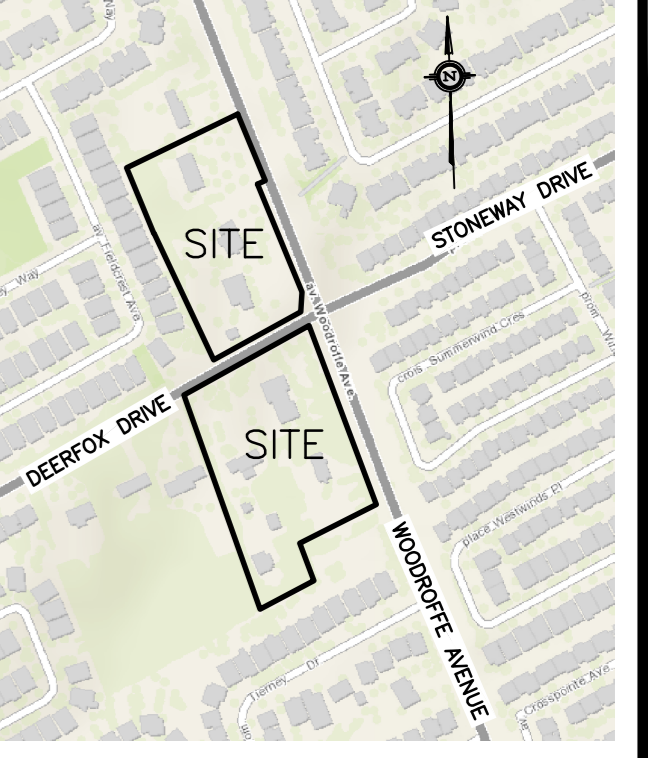


CB	CATCH-BASIN
MH	STORM MANHOLE
CB/MH	CATCH BASIN/MANHOLE
MH	SANITARY MANHOLE
VC	VALVE CHAMBER
SPL	SPRINGLINE OF PIPE
INV	INVERT OF PIPE
SAN	SANITARY SEWER
ST	STORM SEWER
WS/WM	WATER SERVICE/WATERMAIN
CS	CURB STOP & STANDPOST
VB	VALVE & VALVE BOX
FH	FIRE HYDRANT
+99.99	EXISTING GRADE ELEVATION
—	OVER HEAD WIRE
— B —	BELL TELEPHONE
— G —	CABLE
— T —	GAS
—	TRAFFIC
---	PROPERTY LINE

KEY PLAN

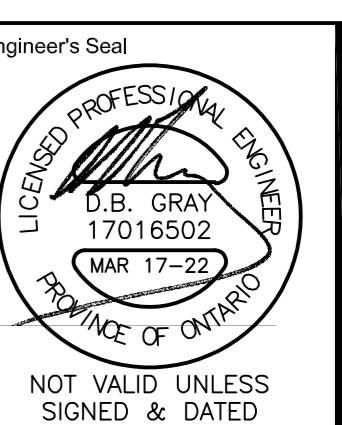


No.	DATE	REVISION
3	MAR 17-22	RE-ISSUED TO CITY FOR APPROVAL
2	DEC 21-21	ISSUED TO CITY FOR APPROVAL
1	SEP 28-21	PRELIMINARY

D. B. GRAY ENGINEERING INC.
 Stormwater Management - Grading & Drainage - Storm & Sanitary Sewers - Watermain
 700 Long Point Circle 613-425-8044
 Ottawa, Ontario d.gray@dbgrayengineering.com

Project: **MUNICIPAL SANITARY SEWER EXTENSION**
 CROSSING WOODROFFE AVE
 WEST FROM STONEWAY DR
 NORTH ON WOODROFFE AVE &
 WEST ON DEERFOX DR
 OTTAWA, ONTARIO

Drawing Title:
PLAN AND PROFILE
 STA A+035.3 TO STA A+060.2



Drawn: D.B.G.
 Hor. Scale: 1:100
 Vert. Scale: 1:20
 Date: OCT 1-21
 Job No.: 20055

Drawing No.:
C-3
 of 9

NOT VALID UNLESS SIGNED & DATED