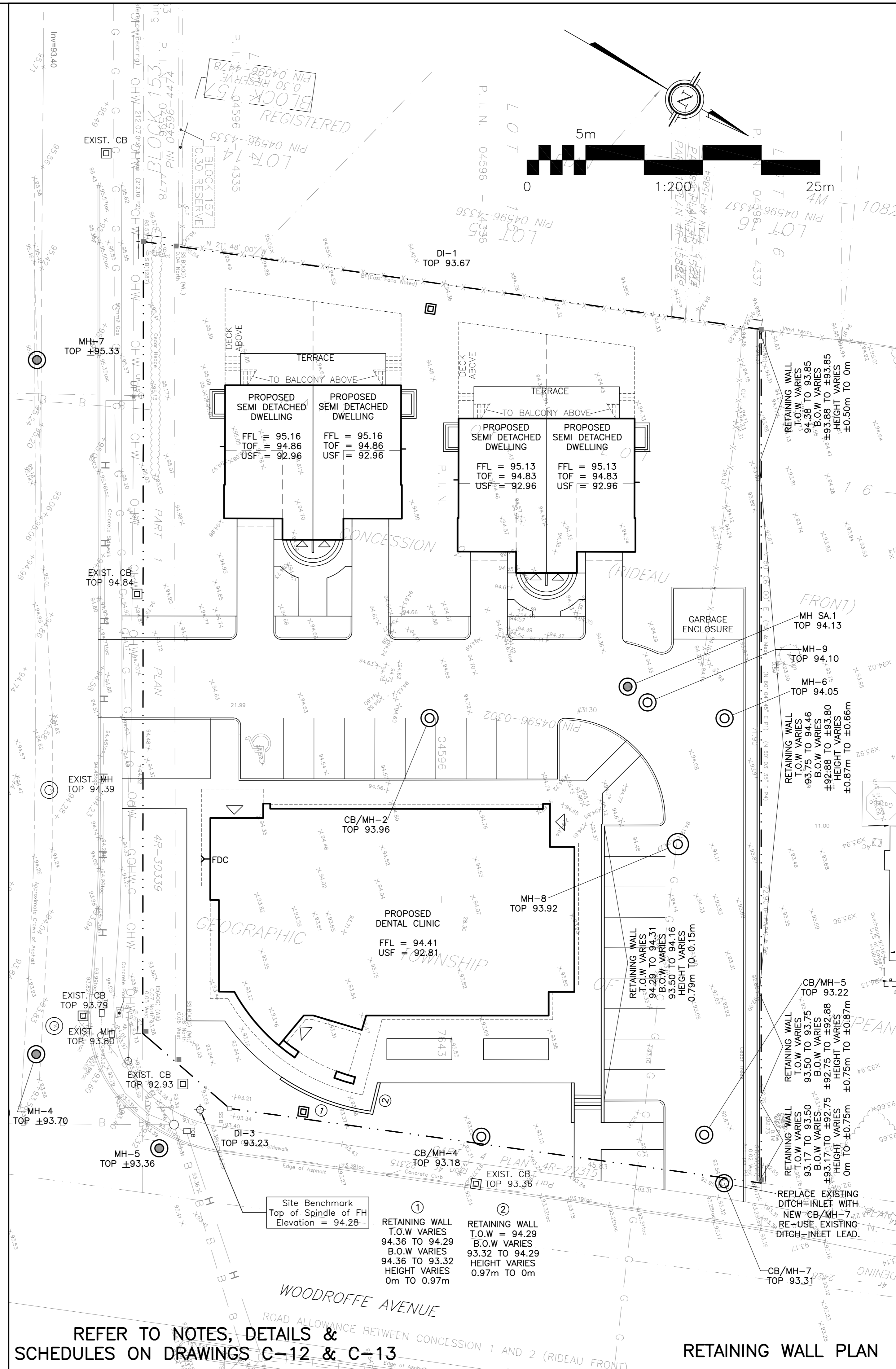


GRADING PLAN



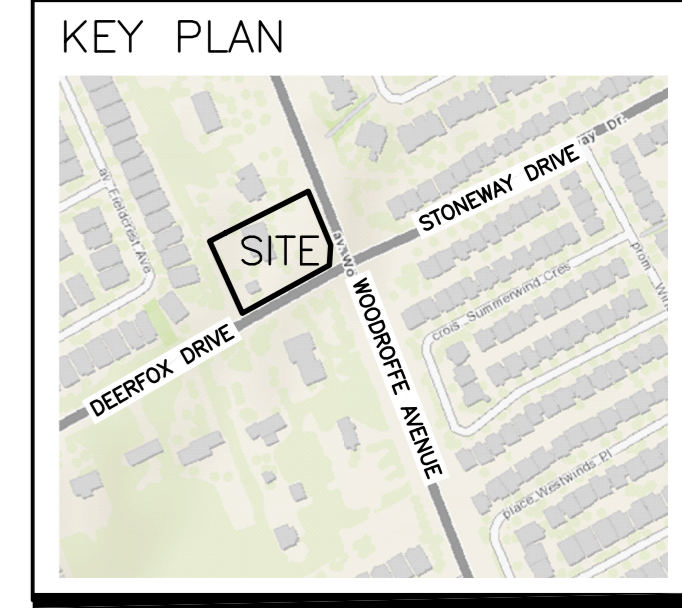
RETAINING WALL PLAN

REFER TO NOTES, DETAILS & SCHEDULES ON DRAWINGS C-12 & C-13

REFER TO NOTES, DETAILS & SCHEDULES ON DRAWINGS C-12 & C-13

LEGEND

- FFL FINISHED FLOOR ELEVATION
- TOF TOP OF FOUNDATION
- BFL BASEMENT FLOOR ELEVATION
- USF UNDERSIDE OF FOOTING
- PROPERTY LINE
- CB CATCH-BASIN
- MH STORM MANHOLE
- CB/MH CATCH-BASIN/MANHOLE
- MH SANITARY MANHOLE
- VC VALVE CHAMBER
- FH FIRE HYDRANT
- FDC FIRE DEPARTMENT CONNECTION
- - - EXISTING GRADE ELEVATION
- +99.99 PROPOSED GRADE ELEVATION
- 2% EXISTING SLOPE OF GRADE
- 2% PROPOSED SLOPE OF GRADE
- EMERGENCY OVERLAND FLOW
- T.O.S. TOP OF SLOPE
- B.O.S. BOTTOM OF SLOPE
- - - CENTERLINE OF SWALE
- 150mm CURB
- D.C. DEPRESSION CURB
- ROOF DRAIN
- /// LIGHT-DUTY PAVEMENT
- /// HEAVY-DUTY PAVEMENT
- CONCRETE
- LANDSCAPE



No.	DATE	REVISION
3	MAR 17-22	ISSUED FOR APPROVAL
2	FEB 17-22	ISSUED FOR COORDINATION
1	DEC 7-22	ISSUED FOR COORDINATION

D. B. GRAY ENGINEERING INC.
 Stormwater Management - Grading & Drainage - Storm & Sanitary Sewers - Waterworks
 700 Long Point Circle 613-425-8044
 Ottawa, Ontario d.gray@dbgrayengineering.com

Project
**PROPOSED
 1 STOREY DENTAL CLINIC &
 4 2-STOREY SEMI-DETACHED,
 3130 WOODROFFE AVENUE
 OTTAWA, ONTARIO**

Drawing Title
**GRADING PLAN &
 RETAINING WALL PLAN**

Engineer's Seal

 Drawn D.B.G.
 Hor. Scale 1:200
 Vert. Scale 1:200
 Date DEC 7-21
 Job No. 20055
 Drawing No.
**C-2
 of 5**
 NOT VALID UNLESS SIGNED & DATED