

WATER SERVICE PROFILE TABLE

MATERIAL:  
150mm PVC PRESSURE CLASS 150 DR18

STATION	DESCRIPTION	GRADE ELEVATION	TOP OF PIPE	DEPTH OF COVER	NOTES
A+00.0	200mm x 150mm TEE CONNECTION IN 300mm MUNICIPAL WATERMAIN TO CITY OF OTTAWA STANDARDS	±94.75	±92.31	±2.44	-
A+01.3	22.5° VERTICAL BEND UP TO CITY OF OTTAWA STANDARDS	±94.75	92.31	±2.44	START OF 50mm THICK INSULATION AS PER CITY OF OTTAWA DRAWING No. W22
A+03.0	-	±94.79	93.01	±1.78	CROSSING 250 SAN TOP 90.63 WM U/S 92.88 - 220mm CLEARANCE (MIN. 250mm REQ'D)
A+03.1	22.5° VERTICAL BEND DOWN TO CITY OF OTTAWA STANDARDS	±94.79	93.05	±1.74	-
A+04.1	-	±94.81	93.05	±1.76	CROSSING 300 ST TOP ±92.65 WM U/S 92.90 - 250mm CLEARANCE (MIN. 250mm REQ'D)
A+05.1	22.5° VERTICAL BEND DOWN TO CITY OF OTTAWA STANDARDS	±94.77	93.05	±1.72	-
A+07.3	22.5° VERTICAL BEND UP TO CITY OF OTTAWA STANDARDS	±94.67	92.14	±2.53	END OF 50mm THICK INSULATION AS PER CITY OF OTTAWA DRAWING No. W22
A+12.1	150mm VALVE & VALVE BOX TO CITY OF OTTAWA STANDARDS	94.78	92.12	2.66	ON PROPERTY LINE
A+15.8 (B+00.0)	150mm x 150mm TEE TO CITY OF OTTAWA STANDARDS	94.62	92.10	2.52	-
A+16.8 (C+00.0)	TVS CONNECTION AS PER CITY OF OTTAWA DRAWING No. W33	94.58	92.10	2.48	-
A+17.8	150mm END CAP TO CITY OF OTTAWA STANDARDS	94.54	92.10	2.44	-

MATERIAL:  
150mm PVC PRESSURE CLASS 150 DR18

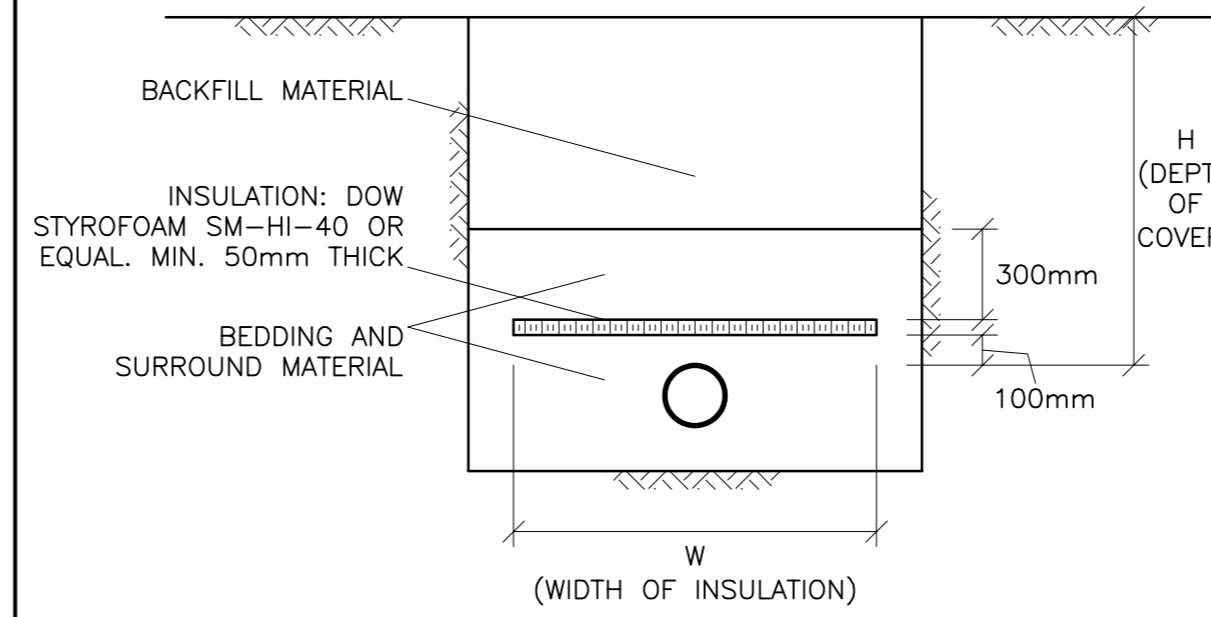
STATION	DESCRIPTION	GRADE ELEVATION	TOP OF PIPE	DEPTH OF COVER	NOTES
B+00.0 (A+15.8)	150mm x 150mm TEE TO CITY OF OTTAWA STANDARDS	94.62	92.10	2.52	-
B+01.0	150mm VALVE & VALVE BOX TO CITY OF OTTAWA STANDARDS	94.59	92.08	2.51	-
B+03.0	-	94.54	92.03	2.51	CROSSING 200 SAN TOP 91.63 WM U/S 91.88 - 250mm CLEARANCE (MIN. 250mm REQ'D)
B+04.4	-	94.51	91.99	2.52	CROSSING 250 ST INV 92.49 WM TOP 91.99 - 500mm CLEARANCE (MIN. 500mm REQ'D)
B+05.7	-	94.47	91.98	2.49	BOTTOM OF CURB
B+14.2	45° BEND TO CITY OF OTTAWA STANDARDS	94.36	91.96	2.40	-
B+17.1	-	94.40	91.96	2.44	ENTRY INTO BUILDING

MATERIAL:  
50mm PEX TUBING TO AWWA C-904 SDR 9 (CTS)

STATION	DESCRIPTION	GRADE ELEVATION	TOP OF PIPE	DEPTH OF COVER	NOTES
C+00.0 (A+16.8)	TVS CONNECTION AS PER CITY OF OTTAWA DRAWING No. W33	94.58	92.10	2.48	-
C+01.0	50mm CURB STOP & SERVICE POST TO CITY OF OTTAWA STANDARDS	94.55	91.94	2.61	-
C+05.5	-	94.38	91.23	3.15	CROSSING 100 ST INV 92.68 WM TOP 91.29 - 130mm CLEARANCE (MIN. 500mm REQ'D)
C+05.8	-	94.37	91.19	3.18	19 COPPER WS CONNECTION
C+06.1	-	94.36	91.14	3.22	CROSSING 135 SAN INV 91.64 WM TOP 91.14 - 500mm CLEARANCE (MIN. 500mm REQ'D)
C+15.3	-	94.14	91.21	2.93	CROSSING 100 ST INV 92.72 WM TOP 91.23 - 140mm CLEARANCE (MIN. 500mm REQ'D)
C+15.6	-	94.14	91.21	2.93	19 COPPER WS CONNECTION
C+15.9	-	94.14	91.21	2.93	CROSSING 135 SAN INV 91.73 WM TOP 91.23 - 500mm CLEARANCE (MIN. 500mm REQ'D)
C+20.6	-	94.14	91.25	2.89	CROSSING 250 ST INV 92.05 WM TOP 91.26 - 151mm CLEARANCE (MIN. 500mm REQ'D)
C+25.4	-	94.14	91.29	2.85	CROSSING 100 ST INV 92.77 WM TOP 91.29 - 151mm CLEARANCE (MIN. 500mm REQ'D)
C+25.7	-	94.14	91.29	2.85	19 COPPER WS CONNECTION
C+26.0	-	94.14	91.29	2.85	CROSSING 135 SAN INV 91.79 WM TOP 91.29 - 500mm CLEARANCE (MIN. 500mm REQ'D)
C+32.9	50 TO 19 REDUCER	94.14	91.29	2.85	19 COPPER WS CONNECTION

3130 WOODROFFE AVENUE  
CATCH-BASIN & MANHOLE SCHEDULE

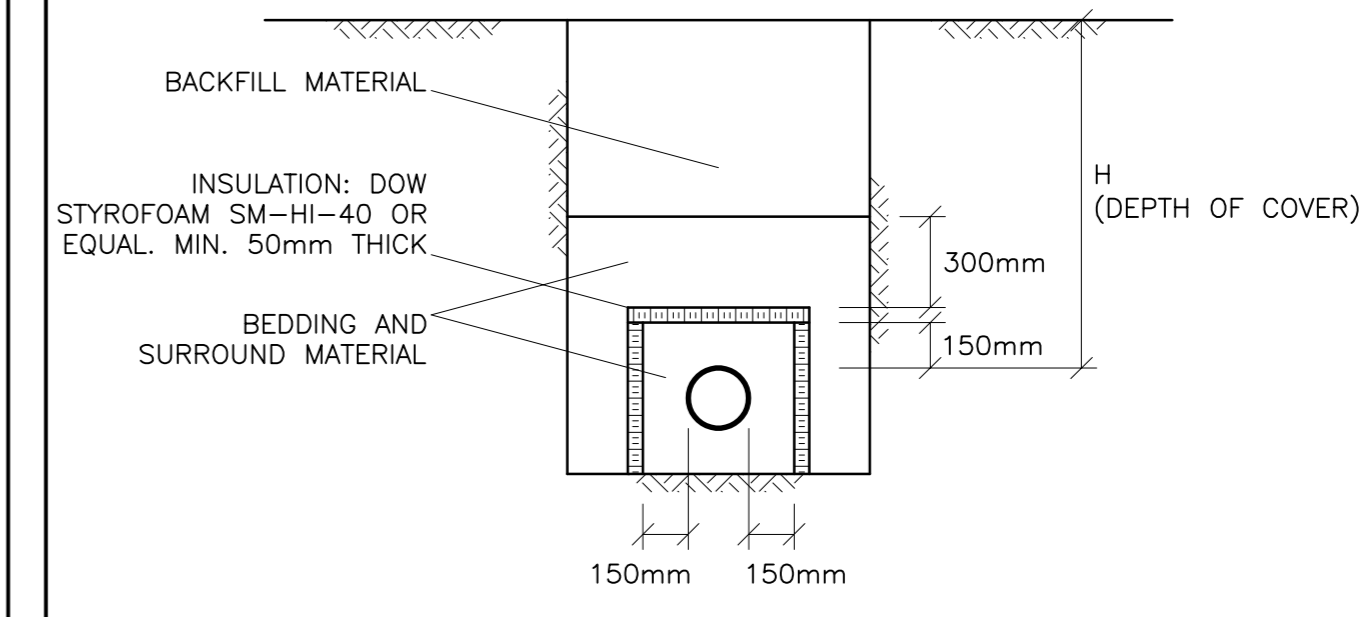
REF	TOP	SIZE	TYPE	INVERT AT INLET	INVERT AT OUTLET	NOTES
<b>STORM SEWER</b>						
DI-1	93.67	600mm x 600mm	PRE-CAST CONCRETE DITCH INLET	-	92.43	TO OPSD 705.030 & CITY OF OTTAWA STANDARDS - GRATE TO OPSD 403.010 3:1 SLOPE
CB/MH-2	93.96	1200mm	PRE-CAST CONCRETE CATCH-BASIN/MANHOLE	92.03(W)	92.03(N)	TO OPSD 701.010 & CITY OF OTTAWA STANDARDS - FRAME & COVER TO CITY OF OTTAWA DRAWING No. S25 & S28.1 OR OPSD 401.010 INSTALL ICD IN OUTLET PIPE
DI-3	93.23	600mm x 600mm	PRE-CAST CONCRETE DITCH INLET	-	92.00	TO OPSD 705.030 & CITY OF OTTAWA STANDARDS - GRATE TO OPSD 403.010 3:1 SLOPE
CB/MH-4	93.18	1200mm	PRE-CAST CONCRETE CATCH-BASIN/MANHOLE	91.93(S)	91.93(N)	TO OPSD 701.010 & CITY OF OTTAWA STANDARDS - FRAME & COVER TO CITY OF OTTAWA DRAWING No. S25 & S28.1 OR OPSD 401.010
CB/MH-5	93.22	1200mm	PRE-CAST CONCRETE CATCH-BASIN/MANHOLE	92.01(W) 91.86(S)	91.86(N)	TO OPSD 701.010 & CITY OF OTTAWA STANDARDS - FRAME & COVER TO CITY OF OTTAWA DRAWING No. S25 & S28.1 OR OPSD 401.010 INSTALL ICD IN OUTLET PIPE
MH-6	94.05	1200mm	PRE-CAST CONCRETE MANHOLE	91.98(S)	91.92(E)	TO OPSD 701.010 & CITY OF OTTAWA STANDARDS - FRAME & COVER TO CITY OF OTTAWA DRAWING No. S25 & S24.1 OR OPSD 401.010
CB/MH-7	93.31	1200mm	PRE-CAST CONCRETE CATCH-BASIN/MANHOLE	91.84(W)	±91.84(E)	TO OPSD 701.010 & CITY OF OTTAWA STANDARDS - FRAME & COVER TO CITY OF OTTAWA DRAWING No. S25 & S28.1 OR OPSD 401.010
MH-8	93.92	1500mm	PRE-CAST CONCRETE MANHOLE	92.05(W)	92.05(N)	TO OPSD 701.010 & CITY OF OTTAWA STANDARDS - FRAME & COVER TO CITY OF OTTAWA DRAWING No. S25 & S24.1 OR OPSD 401.010
MH-9	94.10	1200mm	PRE-CAST CONCRETE MANHOLE	-	92.66	TO OPSD 701.010 & CITY OF OTTAWA STANDARDS - FRAME & COVER TO CITY OF OTTAWA DRAWING No. S25 & S24.1 OR OPSD 401.010
<b>SANITARY SEWER</b>						
MH-SA.1	94.13	1200mm	PRE-CAST CONCRETE MANHOLE	-	91.72	TO OPSD 701.010 & CITY OF OTTAWA STANDARDS - FRAME & COVER TO CITY OF OTTAWA DRAWING No. S25 & S24.1 OR OPSD 401.010



INSULATE SEWER AS INDICATED AND WHERE DEPTH OF COVER IS LESS THAN 2000mm. CENTER INSULATION OVER PIPE. JOINTS BETWEEN SHEETS OF INSULATION SHALL BE STAGGERED.

INSULATION OF SEWERS IN SHALLOW TRENCHES  
N.T.S

H (DEPTH OF COVER)	INSULATION THICKNESS	W (WIDTH OF INSULATION)
1400 TO 2000mm	50mm	1200mm + DIAMETER OF PIPE
1100 TO 1400mm	75mm	1800mm + DIAMETER OF PIPE
LESS THAN 1100mm	100mm	2400mm + DIAMETER OF PIPE



INSULATE SEWER AS INDICATED AND WHERE DEPTH OF COVER IS LESS THAN 2000mm. CENTER INSULATION OVER PIPE. JOINTS BETWEEN SHEETS OF INSULATION SHALL BE STAGGERED.

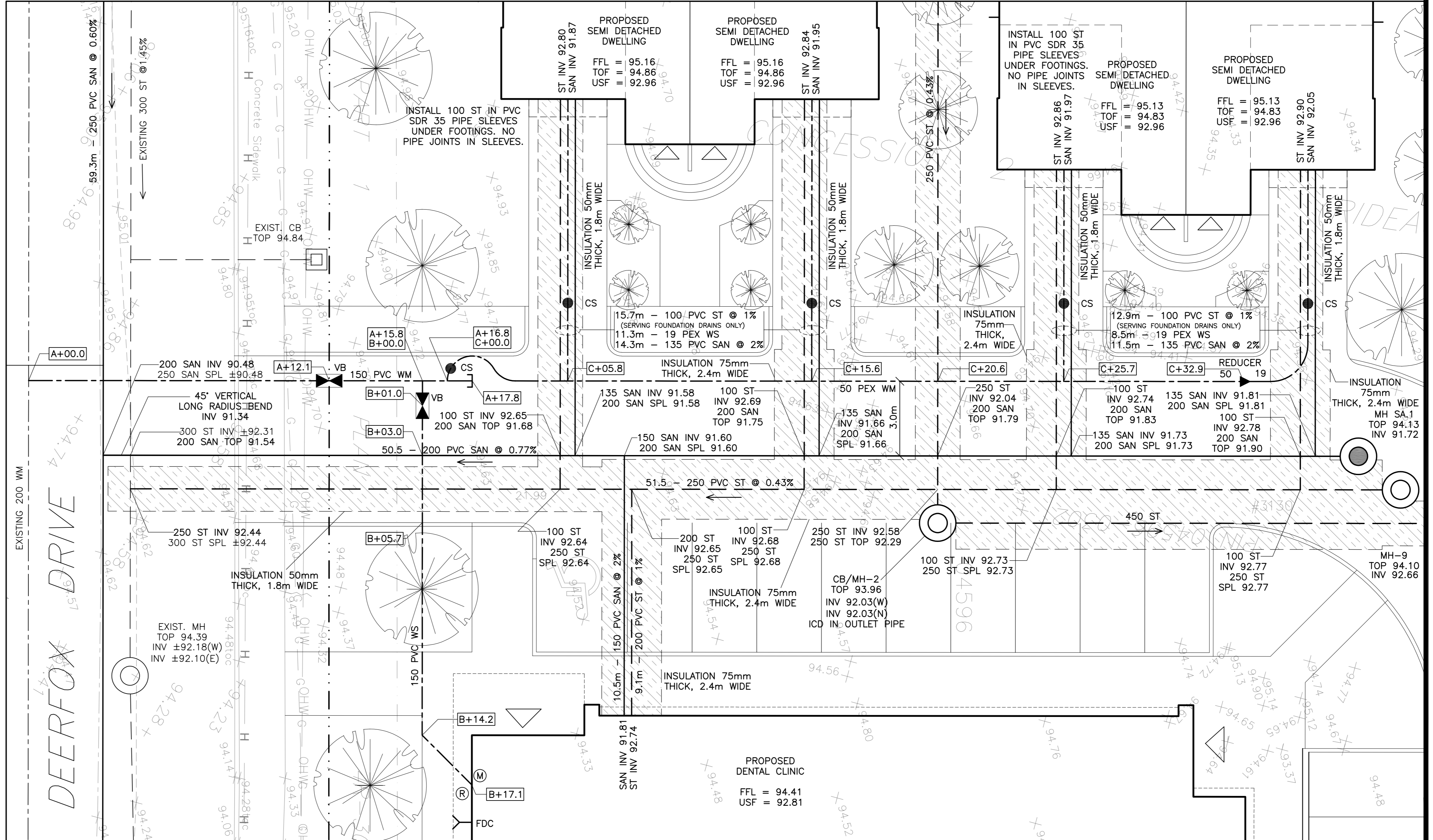
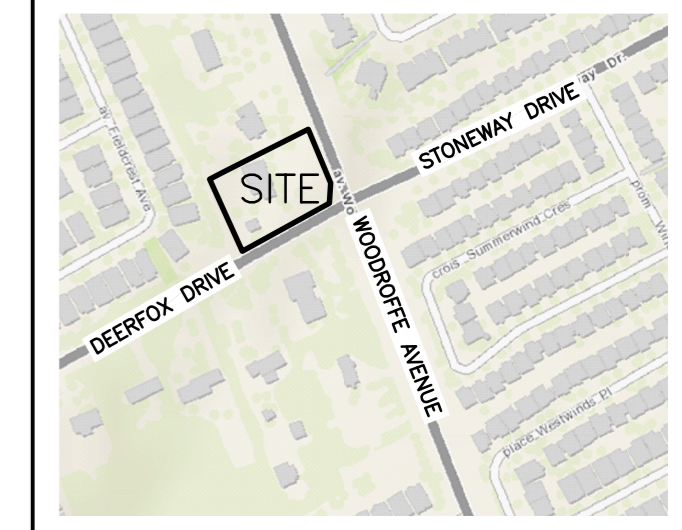
INSULATION OF SEWERS & SERVICE CONNECTIONS IN SHALLOW TRENCHES  
N.T.S

H (DEPTH OF COVER)	INSULATION THICKNESS
1400 TO 2000mm	50mm
1100 TO 1400mm	75mm
LESS THAN 1100mm	100mm

LEGEND

- FFL FINISHED FLOOR ELEVATION
- TOF TOP OF FOUNDATION
- BFL BASEMENT FLOOR ELEVATION
- USF UNDERSIDE OF FOOTING
- PROPERTY LINE
- CB CATCH-BASIN
- MH STORM MANHOLE
- CB/MH CATCH-BASIN/MANHOLE
- MH SANITARY MANHOLE
- VC VALVE CHAMBER
- FH FIRE HYDRANT
- FDC FIRE DEPARTMENT CONNECTION
- CS CURB STOP & STANDPOST
- VB VALVE & VALVE BOX
- M WATER METER
- R REMOTE WATER METER
- SAN SANITARY SEWER
- ST STORM SEWER
- WS/WM WATER SERVICE/WATERMAIN
- OBV OVERBEND OF PIPE
- SPL SPRINGLINE OF PIPE
- INV INVERT OF PIPE
- 150mm BARRIER CURB
- D.C DEPRESSED CURB
- ROAD CUT REINSTATEMENT

KEY PLAN



No.	DATE	REVISION
2	MAR 17-22	ISSUED FOR APPROVAL
1	FEB 17-22	ISSUED FOR COORDINATION

**D. B. GRAY ENGINEERING INC.**  
Stormwater Management - Grading & Drainage - Storm & Sanitary Sewers - Watermain  
700 Long Point Circle 613-425-8044  
Ottawa, Ontario d.gray@dbgrayengineering.com

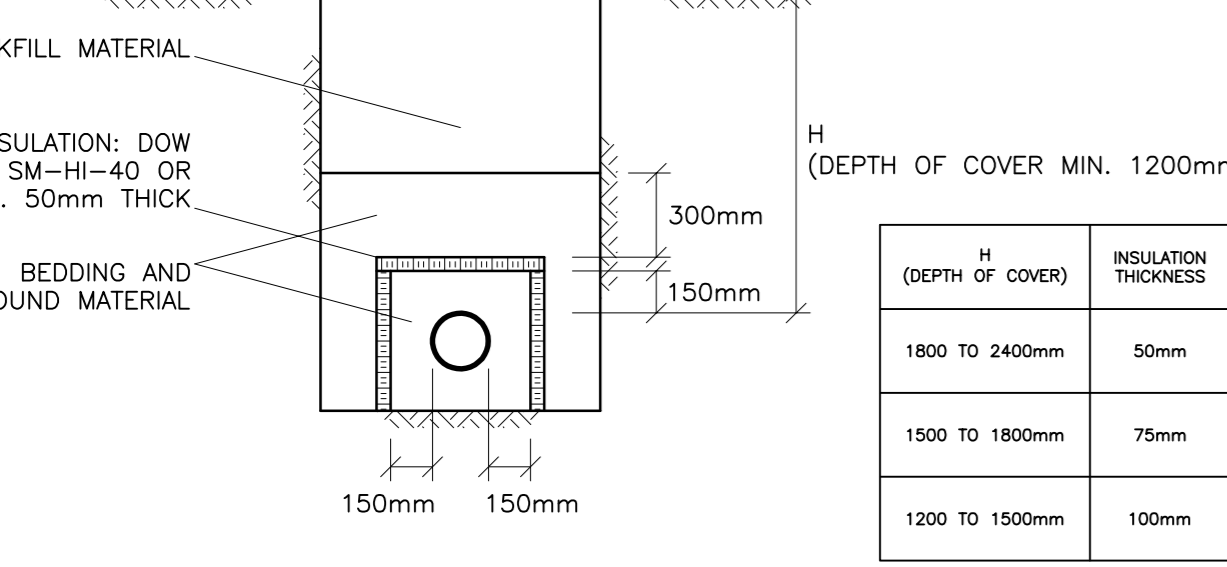
Project  
**PROPOSED  
1 STOREY DENTAL CLINIC &  
4 2-STOREY SEMI-DETACHED,  
3130 WOODROFFE AVENUE  
OTTAWA, ONTARIO**

Drawing Title  
**DETAILS &  
SCHEDULES**

Engineer's Seal

Drawn D.B.G  
Hor. Scale 1:200  
Vert. Scale  
Date FEB 17-21  
Job No. 20055

Drawing No.  
**C-5  
of 5**



INSULATE WATERMAIN AS INDICATED AND WHERE DEPTH OF COVER IS LESS THAN 2400mm, PROVIDE A MINIMUM 1200mm COVER CENTER INSULATION OVER PIPE. JOINTS BETWEEN SHEETS OF INSULATION SHALL BE STAGGERED.

INSULATION OF WATERMAINS & WATER SERVICE CONNECTIONS IN SHALLOW TRENCHES  
AS PER CITY OF OTTAWA DRAWING No. W22  
N.T.S