

IT IS THE RESPONSIBILITY OF THE APPROPRIATE CONTRACTOR TO CHECK AND VERIFY ALL DIMENSIONS ON SITE AND TO REPORT ALL ERRORS AND/OR OMISSIONS TO THE ARCHITECT. ALL CONTRACTORS MUST COMPLY WITH ALL PERTINENT CODES AND BY-LAWS. THIS DRAWING MAY NOT BE USED FOR CONSTRUCTION UNTIL SIGNED BY THE ARCHITECT. DO NOT SCALE DRAWINGS.

**NOTATION SYMBOLS:**

- INDICATES DRAWING NOTES, LISTED ON EACH SHEET.
- INDICATES ASSEMBLY TYPE; REFER TO TYPICAL ASSEMBLIES SCHEDULE.
- INDICATES WINDOW TYPE; REFER TO WINDOW ELEVATIONS AND DETAILS ON A900 SERIES.
- INDICATES DOOR TYPE; REFER TO DOOR SCHEDULE AND DETAILS ON A900 SERIES.
- DETAIL NUMBER
- TITLE
- SCALE
- DETAIL REFERENCE PAGE

**DRAWING NOTES:**

- ASPHALT SHINGLES: WEATHERED WOOD
- PREFINISHED ALUMINUM FASCIA & VENTED SOFFIT (CHARCOAL).
- BEIGE BRICK: FORTERRA, MAX SIZE, RUTHERFORD
- HARDIE BOARD ACCENT PANEL C/W ALUMINUM TRIM PIECES (COBBLESTONE)
- HARDIE BOARD ACCENT PANEL C/W ALUMINUM TRIM PIECES (MIDNIGHT BLACK)
- VINYL SIDING: STORM
- PRECAST LINTELS & SILLS
- 125mm PRECAST CONCRETE ACCENT BAND
- ALUMINUM BALCONY RAILING c/w PICKETS @ 100mm o.c. MAX (BLACK) PROVIDE P. ENG. SIGNED DETAILS TO SITE INSPECTOR PRIOR TO INSTALLATION
- PRE-FINISHED ALUMINUM FLASHING (CHARCOAL)
- ORNAMENTAL METAL RODS (CHARCOAL)
- CONCRETE STEPS
- STACKED PRECAST CONCRETE UNIT PLANTER WALL
- CONCRETE PARGING

No.	DESCRIPTION	DATE
1	ISSUED FOR SITE PLAN	2022-02-17

REVISIONS:

ARCHITECT SEAL: NORTH ARROW:

SEAL DATE: STAMP DATE

CLIENT:



ARCHITECT:  
**rla/architecture**  
roderick lahey architect inc.  
56 beech street, ottawa, ontario K1S 3J6  
t. 613.724.9932 f. 613.724.1209 rlaarchitecture.ca

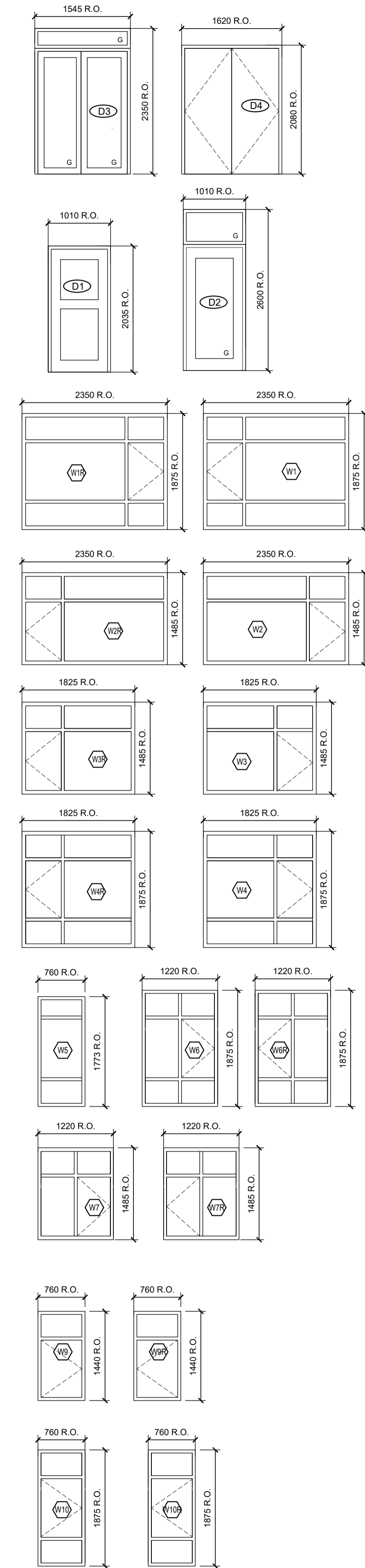
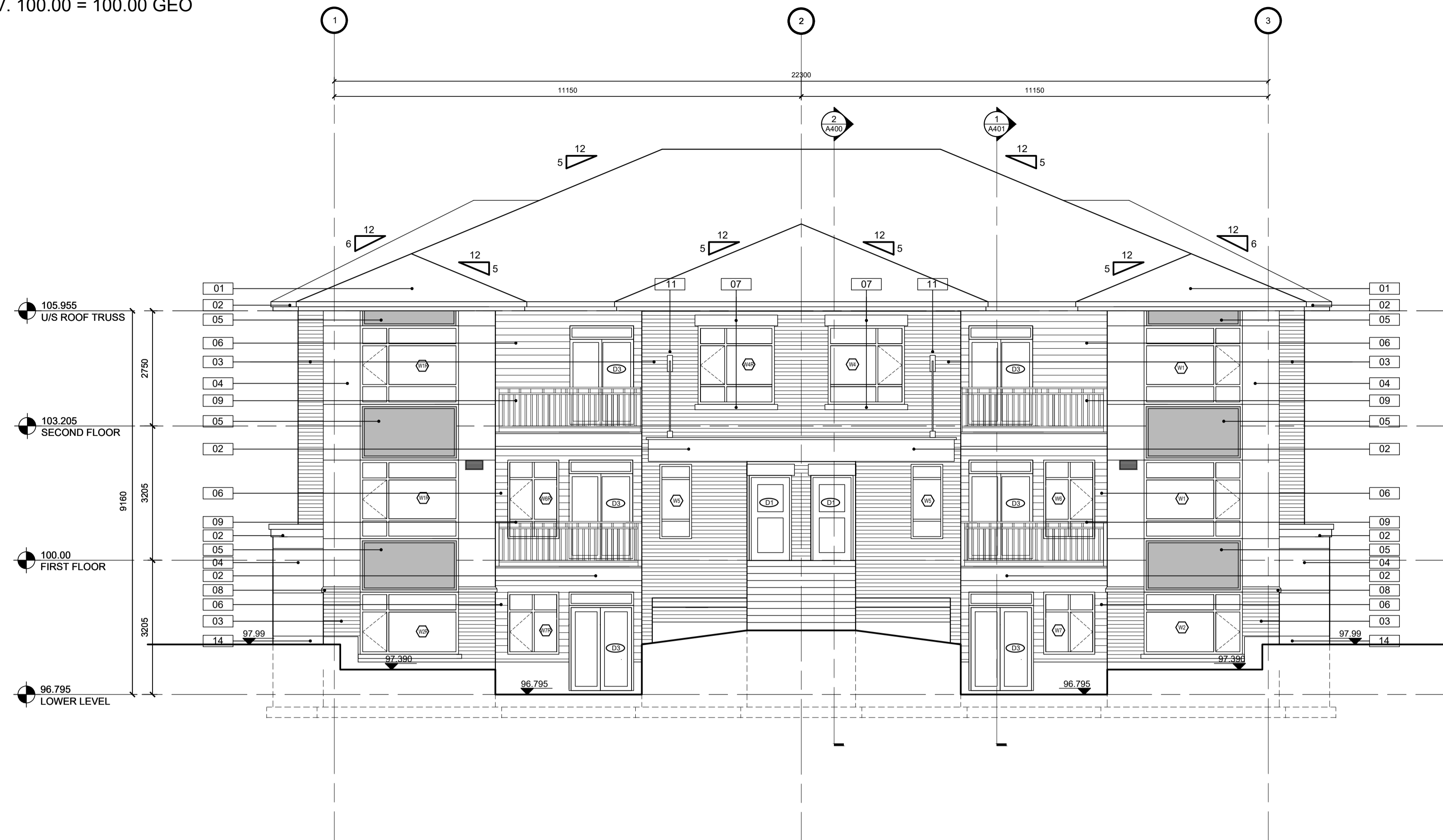
PROJECT TITLE:  
**(SMALL)  
4624 SPRATT  
BLOCK -**  
OTTAWA - ONTARIO

SHEET TITLE:  
**ELEVATIONS  
WINDOW & DOOR  
SCHEDULE**

DRAWN: CM	CHECKED: RLA
SCALE: 1:75	SHEET No. <b>A200</b>
PROJECT No. 2101	

**TYPICAL NOTES:**  
WINDOWS TO CONFORM CAN/CSA-A440.1 AND CAN/CSA-A440  
WINDOWS AND PATIO DOORS TO HAVE A MAX. U VALUE OF 1.6  
EXTERIOR SWING DOORS TO COMPLY WITH ASTM E283  
GLASS IN DOORS AND SIDE LIGHTS TO BE TEMPERED GLASS  
CONFORMING TO CAN/CSG-12.1-M  
BUILDING A & F REQUIRE WINDOWS WITH STC RATING NOT LESS  
THAN 31 IN ACCORDANCE WITH ASTM E90.

**WINDOWS & EXTERIOR DOOR SCHEDULE**  
SCALE = NTS



IT IS THE RESPONSIBILITY OF THE APPROPRIATE CONTRACTOR TO CHECK AND VERIFY ALL DIMENSIONS ON SITE AND TO REPORT ALL ERRORS AND/OR OMISSIONS TO THE ARCHITECT. ALL CONTRACTORS MUST COMPLY WITH ALL PERTINENT CODES AND BY-LAWS. THIS DRAWING MAY NOT BE USED FOR CONSTRUCTION UNTIL SIGNED BY THE ARCHITECT. DO NOT SCALE DRAWINGS.

**NOTATION SYMBOLS:**

- (00) INDICATES DRAWING NOTES, LISTED ON EACH SHEET.
- (A000) INDICATES ASSEMBLY TYPE; REFER TO TYPICAL ASSEMBLIES SCHEDULE.
- (W00) INDICATES WINDOW TYPE; REFER TO WINDOW ELEVATIONS AND DETAILS ON A900 SERIES.
- (D00) INDICATES DOOR TYPE; REFER TO DOOR SCHEDULE AND DETAILS ON A900 SERIES.
- 00 - DETAIL NUMBER
- A000 - TITLE SCALE
- 00 - DETAIL REFERENCE PAGE

**DRAWING NOTES:**

- 01 ASPHALT SHINGLES: WEATHERED WOOD
- 02 PREFINISHED ALUMINUM FASCIA & VENTED SOFFIT (CHARCOAL).
- 03 BEIGE BRICK: FORTERRA, MAX SIZE, RUTHERFORD
- 04 HARDIE BOARD ACCENT PANEL C/W ALUMINUM TRIM PIECES (COBBLESTONE)
- 05 HARDIE BOARD ACCENT PANEL C/W ALUMINUM TRIM PIECES (MIDNIGHT BLACK)
- 06 VINYL SIDING: STORM
- 07 PRECAST LINTELS & SILLS
- 08 125mm PRECAST CONCRETE ACCENT BAND
- 09 ALUMINUM BALCONY RAILING c/w PICKETS @ 100mm o.c. MAX (BLACK) PROVIDE P. ENG. SIGNED DETAILS TO SITE INSPECTOR PRIOR TO INSTALLATION
- 10 PRE-FINISHED ALUMINUM FLASHING (CHARCOAL)
- 11 ORNAMENTAL METAL RODS (CHARCOAL)
- 12 CONCRETE STEPS
- 13 STACKED PRECAST CONCRETE UNIT PLANTER WALL
- 14 CONCRETE PARGING

No.	DESCRIPTION	DATE
1	ISSUED FOR SITE PLAN	2022-02-17

REVISIONS:

ARCHITECT SEAL:		NORTH ARROW:
SEAL DATE: STAMP DATE		

CLIENT:

ARCHITECT:

roderick lahey architect inc.  
56 beech street, ottawa, ontario K1S 3J6  
t. 613.724.9932 f. 613.724.1209 rlaarchitecture.ca

PROJECT TITLE:

(SMALL)  
**4624 SPRATT  
BLOCK -** ONTARIO

SHEET TITLE:

**ELEVATIONS  
WINDOW & DOOR  
SCHEDULE**

DRAWN: CM	CHECKED: RLA
SCALE: 1:75	SHEET No. <b>A201</b>
PROJECT No. 2101	

**TYPICAL NOTES:**  
WINDOWS TO CONFORM CAN/CSA-A440.1 AND CAN/CSA-A440  
WINDOWS AND PATIO DOORS TO HAVE A MAX. U VALUE OF 1.6  
EXTERIOR SWING DOORS TO COMPLY WITH ASTM E283  
GLASS IN DOORS AND SIDE LIGHTS TO BE TEMPERED GLASS  
CONFORMING TO CAN/CSA-G10.15-14M  
BUILDING A & F REQUIRE WINDOWS WITH STC RATING NOT LESS  
THAN 31 IN ACCORDANCE WITH ASTM E90.

**3 WINDOWS & EXTERIOR DOOR SCHEDULE**  
SCALE = NTS