

**TYPICAL NOTES:**  
 WINDOWS TO CONFORM CAN/CSA-A440.1 AND CAN/CSA-A440  
 WINDOWS AND PATIO DOORS TO HAVE A MAX. U VALUE OF 1.6  
 EXTERIOR SWING DOORS TO COMPLY WITH ASTM E283  
 GLASS IN DOORS AND SIDE LIGHTS TO BE TEMPERED GLASS  
 CONFORMING TO CAN/CSG-12.1-M  
 BUILDING A & F REQUIRE WINDOWS WITH STC RATING NOT LESS  
 THAN 31 IN ACCORDANCE WITH ASTM E90.

**3** WINDOWS & EXTERIOR DOOR SCHEDULE  
 2000-20 SCALE = NTS

IT IS THE RESPONSIBILITY OF THE APPROPRIATE CONTRACTOR TO CHECK AND VERIFY ALL DIMENSIONS ON SITE AND TO REPORT ALL ERRORS AND/OR OMISSIONS TO THE ARCHITECT. ALL CONTRACTORS MUST COMPLY WITH ALL PERTINENT CODES AND BY-LAWS. THIS DRAWING MAY NOT BE USED FOR CONSTRUCTION UNTIL SIGNED BY THE ARCHITECT. DO NOT SCALE DRAWINGS.

**NOTATION SYMBOLS:**

- ⓪ INDICATES DRAWING NOTES, LISTED ON EACH SHEET.
- Ⓛ INDICATES ASSEMBLY TYPE; REFER TO TYPICAL ASSEMBLIES SCHEDULE.
- Ⓚ INDICATES WINDOW TYPE; REFER TO WINDOW ELEVATIONS AND DETAILS ON A900 SERIES.
- ⓁⓀ INDICATES DOOR TYPE; REFER TO DOOR SCHEDULE AND DETAILS ON A900 SERIES.
- DETAIL NUMBER
- ⓀⓁ TITLE SCALE
- DETAIL REFERENCE PAGE

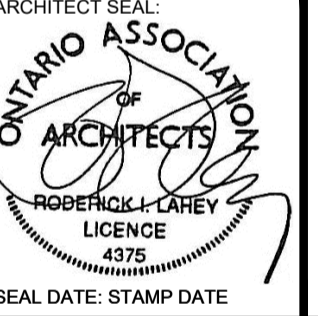

**DRAWING NOTES:**

- 01 ASPHALT SHINGLES: WEATHERED WOOD
- 02 PREFINISHED ALUMINUM FASCIA & VENTED SOFFIT (CHARCOAL).
- 03 BEIGE BRICK: FORTERRA, MAX SIZE, RUTHERFORD
- 04 HARDIE BOARD ACCENT PANEL C/W ALUMINUM TRIM PIECES (COBBLESTONE)
- 05 HARDIE BOARD ACCENT PANEL C/W ALUMINUM TRIM PIECES (MIDNIGHT BLACK)
- 06 VINYL SIDING: STORM
- 07 PRECAST LINTELS & SILLS
- 08 125mm PRECAST CONCRETE ACCENT BAND
- 09 ALUMINUM BALCONY RAILING c/w PICKETS @ 100mm o.c. MAX (BLACK) PROVIDE P-ENG SIGNED DETAILS TO SITE INSPECTOR PRIOR TO INSTALLATION
- 10 PRE-FINISHED ALUMINUM FLASHING (CHARCOAL)
- 11 ORNAMENTAL METAL RODS (CHARCOAL)
- 12 CONCRETE STEPS
- 13 STACKED PRECAST CONCRETE UNIT PLANTER WALL
- 14 CONCRETE PARGING

1	ISSUED FOR SITE PLAN	2022-02-17
---	----------------------	------------

No.	DESCRIPTION	DATE

REVISIONS:

ARCHITECT SEAL:  
  
 NORTH ARROW:  


SEAL DATE: STAMP DATE

CLIENT:



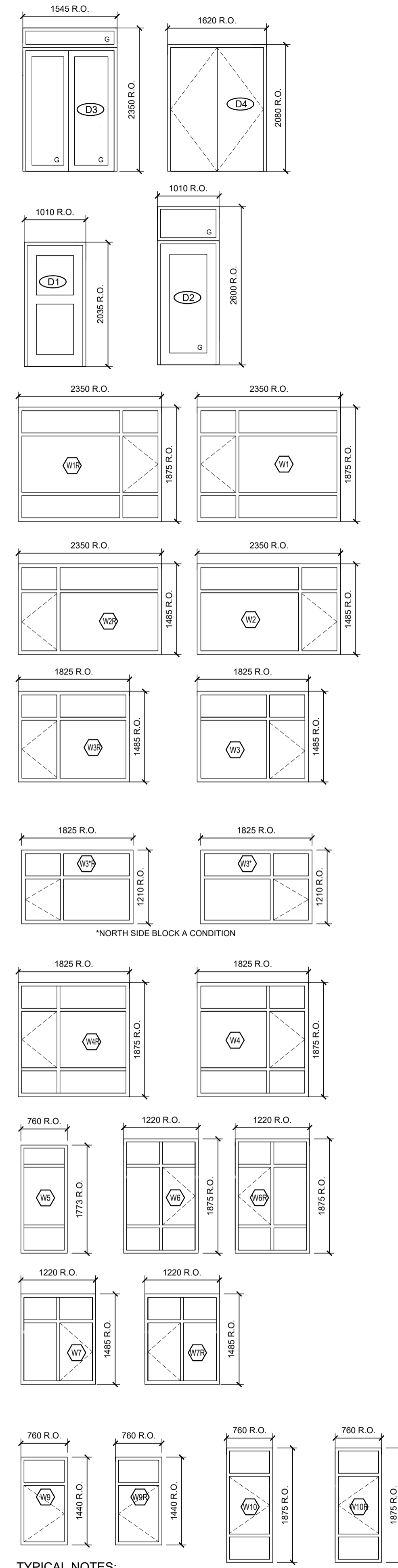
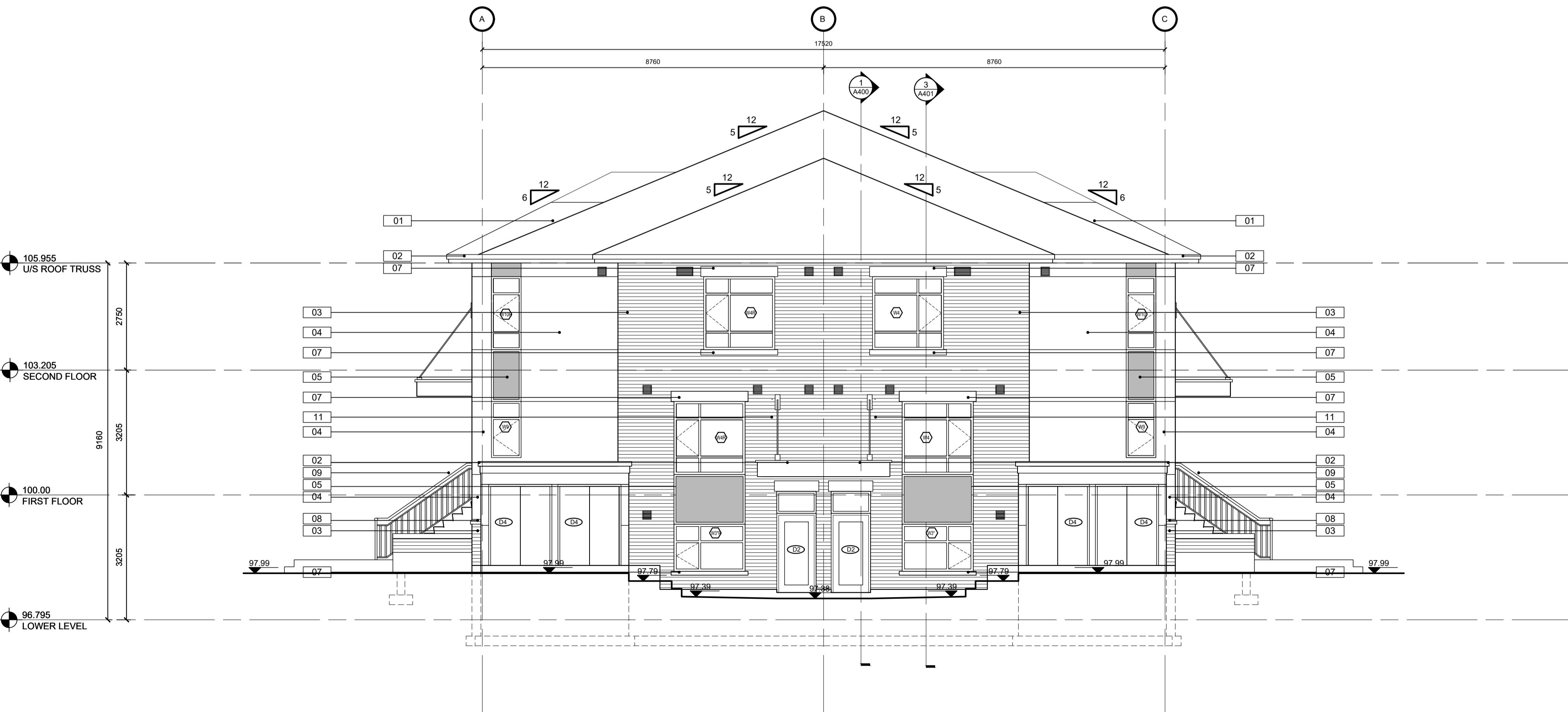
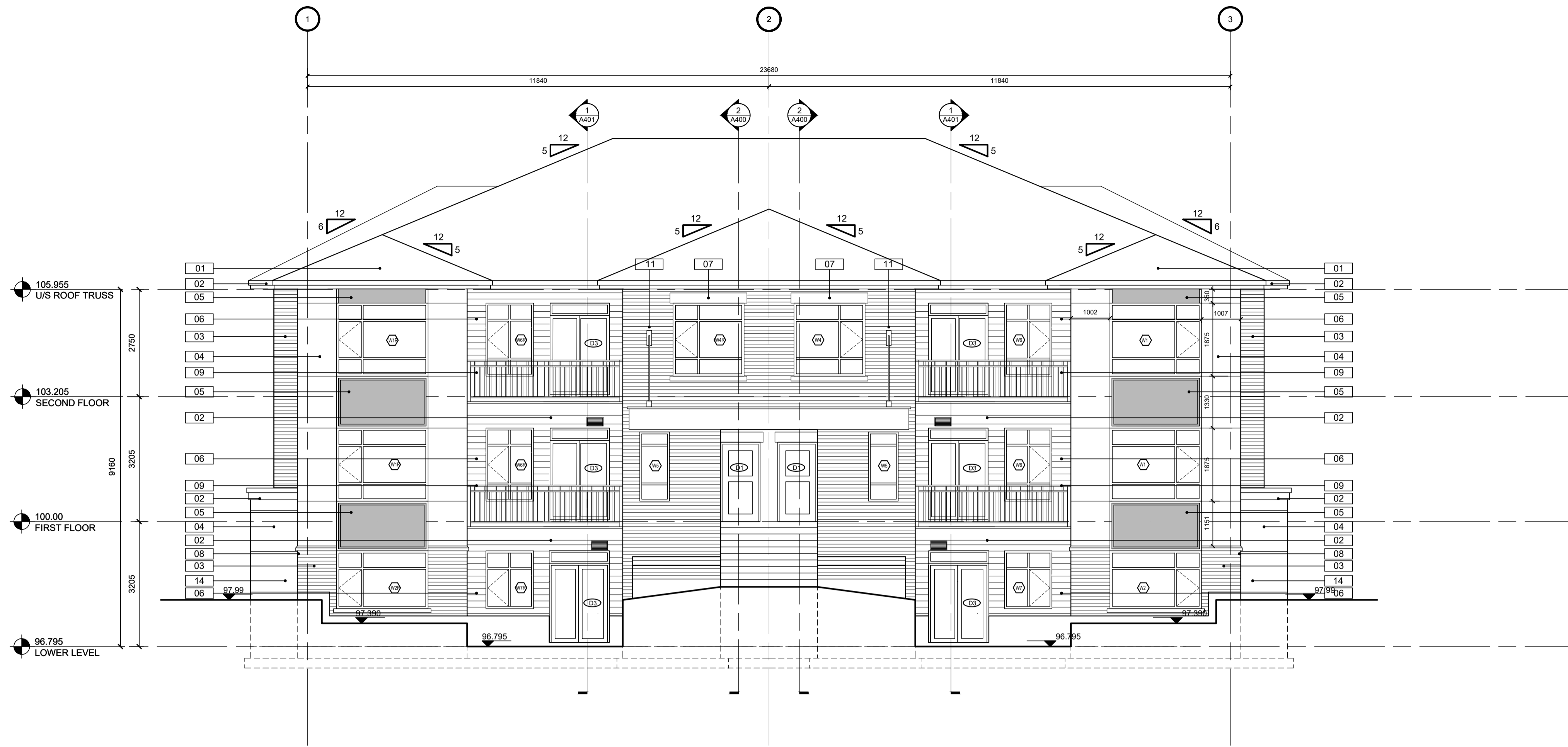
ARCHITECT:

  
 roderick lahey architect inc.  
 56 beech street, ottawa, ontario K1S 3J6  
 t. 613.724.9932 f. 613.724.1209 rlaarchitecture.ca

PROJECT TITLE: (LARGE)  
**4624 SPRATT BLOCK -**  
 OTTAWA ONTARIO

SHEET TITLE:  
**ELEVATIONS WINDOW & DOOR SCHEDULE**

DRAWN: CM	CHECKED: RLA
SCALE: 1:75	SHEET No. <b>A200</b>
PROJECT No. 2101	



IT IS THE RESPONSIBILITY OF THE APPROPRIATE CONTRACTOR TO CHECK AND VERIFY ALL DIMENSIONS ON SITE AND TO REPORT ALL ERRORS AND/OR OMISSIONS TO THE ARCHITECT. ALL CONTRACTORS MUST COMPLY WITH ALL PERTINENT CODES AND BY-LAWS. THIS DRAWING MAY NOT BE USED FOR CONSTRUCTION UNTIL SIGNED BY THE ARCHITECT. DO NOT SCALE DRAWINGS.

**NOTATION SYMBOLS:**

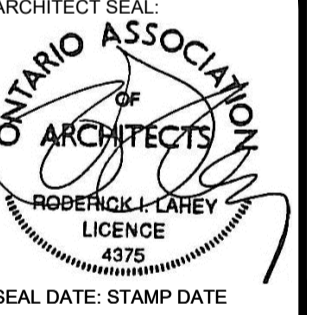

- (00) INDICATES DRAWING NOTES, LISTED ON EACH SHEET.
- (A0) INDICATES ASSEMBLY TYPE; REFER TO TYPICAL ASSEMBLIES SCHEDULE.
- (W0) INDICATES WINDOW TYPE; REFER TO WINDOW ELEVATIONS AND DETAILS ON A900 SERIES.
- (D0) INDICATES DOOR TYPE; REFER TO DOOR SCHEDULE AND DETAILS ON A900 SERIES.
- DETAIL NUMBER
- (00) TITLE SCALE
- DETAIL REFERENCE PAGE

**DRAWING NOTES:**

- 01 ASPHALT SHINGLES: WEATHERED WOOD
- 02 PREFINISHED ALUMINUM FASCIA & VENTED SOFFIT (CHARCOAL).
- 03 BEIGE BRICK: FORTERRA, MAX SIZE, RUTHERFORD
- 04 HARDIE BOARD ACCENT PANEL C/W ALUMINUM TRIM PIECES (COBBLESTONE)
- 05 HARDIE BOARD ACCENT PANEL C/W ALUMINUM TRIM PIECES (MIDNIGHT BLACK)
- 06 VINYL SIDING; STORM
- 07 PRECAST LINTELS & SILLS
- 08 125mm PRECAST CONCRETE ACCENT BAND
- 09 ALUMINUM BALCONY RAILING c/w PICKETS @ 100mm o.c. MAX. (BLACK) PROVIDE P.ENG SIGNED DETAILS TO SITE INSPECTOR PRIOR TO INSTALLATION
- 10 PRE-FINISHED ALUMINUM FLASHING (CHARCOAL)
- 11 ORNAMENTAL METAL RODS (CHARCOAL)
- 12 CONCRETE STEPS
- 13 STACKED PRECAST CONCRETE UNIT PLANTER WALL
- 14 CONCRETE PARGING

No.	DESCRIPTION	DATE
1	ISSUED FOR SITE PLAN	2022-02-17

REVISIONS:

ARCHITECT SEAL:  
  
 NORTH ARROW:  
  
 SEAL DATE: STAMP DATE

CLIENT:  


ARCHITECT:  
  
 56 beech street, ottawa, ontario K1S 3J6  
 t. 613.724.9932 f. 613.724.1209 rlaarchitecture.ca

PROJECT TITLE:  
 (LARGE)  
**4 6 2 4 S P R A T T**  
**B L O C K \_**  
 OTTAWA ONTARIO

SHEET TITLE:  
**ELEVATIONS**  
**WINDOW & DOOR**  
**SCHEDULE**

DRAWN: CM	CHECKED: RLA
SCALE: 1:75	SHEET No. <b>A201</b>
PROJECT No. 2101	

**TYPICAL NOTES:**  
 WINDOWS TO CONFORM CAN/CSA-A440.1 AND CAN/CSA-A440  
 WINDOWS AND PATIO DOORS TO HAVE A MAX. U VALUE OF 1.6  
 EXTERIOR SWING DOORS TO COMPLY WITH ASTM E283  
 GLASS IN DOORS AND SIDE LIGHTS TO BE TEMPERED GLASS  
 CONFORMING TO CAN/CSG-12.1-M  
 BUILDING A & F REQUIRE WINDOWS WITH STC RATING NOT LESS  
 THAN 31 IN ACCORDANCE WITH ASTM E90.

3  
 200-20  
**WINDOWS & EXTERIOR DOOR SCHEDULE**  
 SCALE = NTS