

- LEGEND:**
- IRON BAR
 - BENCHMARK
 - EX. FIRE HYDRANT
 - EX. LIGHT POLE
 - EX. LIGHT STANDARD
 - EX. STORM MH
 - EX. SANITARY MH
 - EX. STORM CB
 - EX. WATER VALVE
 - EX. VALVE CHAMBER
 - EX. BELL & HYDRO POLE
 - EX. GUY WIRE AND ANCHOR
 - EX. TRAFFIC SIGNAL
 - EX. GAS VALVE
 - EX. SIGN
 - EX. TREE
 - SUBJECT PROPERTY
 - PROPERTY LINE
 - EX. CONC. CURB
 - EX. CENTERLINE OF DITCH
 - EX. ROAD CENTERLINE
 - EX. FENCE
 - EX. STORM SEWER
 - EX. CONTOUR
 - NEW YARD LIGHT
 - NEW STORM MH
 - NEW SANITARY MH
 - NEW STORM CB
 - NEW STORM CBMH
 - NEW ILLUMINATED BOLLARD
 - NEW CONC. CURB
 - NEW CURB CUT/DEPRESSED CURB
 - FIRE ROUTE SIGN

No.	REVISIONS	Date	By	App.
D	RE-ISSUED FOR SPA	MAR 28 2022	ML	J.S.
C	RE-ISSUED FOR SPA	DEC 03 2021	ML	J.S.
B	RE-ISSUED FOR SPA	SEPT 24 2021	ML	J.S.
A	ISSUED FOR SPA	APR 27 2021	LMB	J.S.

LICENSED PROFESSIONAL ENGINEER
 J.D. STERN
 100232894
 Mar. 28/2022
 PROVINCE OF ONTARIO

exp Services Inc.
 1-1-905-793-0800 | +1-905-793-0641
 1595 Clark Boulevard
 Brampton, ON L6T 4V1
 Canada
 www.exp.com

exp.

- BUILDINGS • EARTH & ENVIRONMENT • ENERGY •
- INDUSTRIAL • INFRASTRUCTURE • SUSTAINABILITY •

Owner/Client:

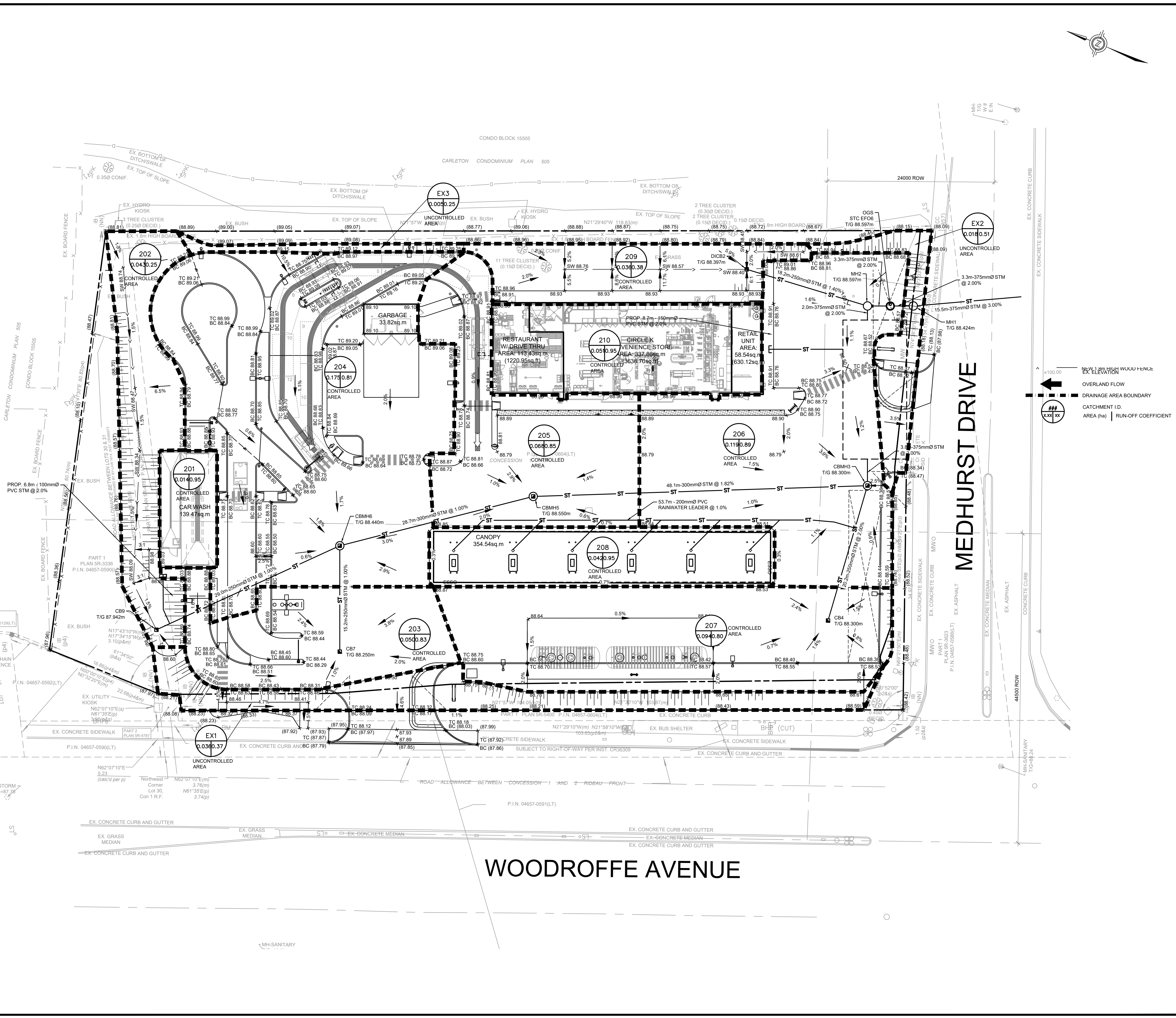
CIRCLE K

Location:
 1545 WOODROFFE AVE.
 OTTAWA, ON

Title:
 POST-DEVELOPMENT
 DRAINAGE PLAN

Designed By: L.M.B.	Drawn By: L.M.B.	Checked By: J.S.
Scale: 1:250	Date: APRIL 2020	City Drawing No.:
Project No.: BRM00606364-B0	Drawing No.:	C04

CITY DWG. # 17094



CONDO BLOCK 1550S
 CARLETON CONDOMINIUM PLAN 505

WOODROFFE AVENUE

MEDHURST DRIVE

24000 ROW

44500 ROW