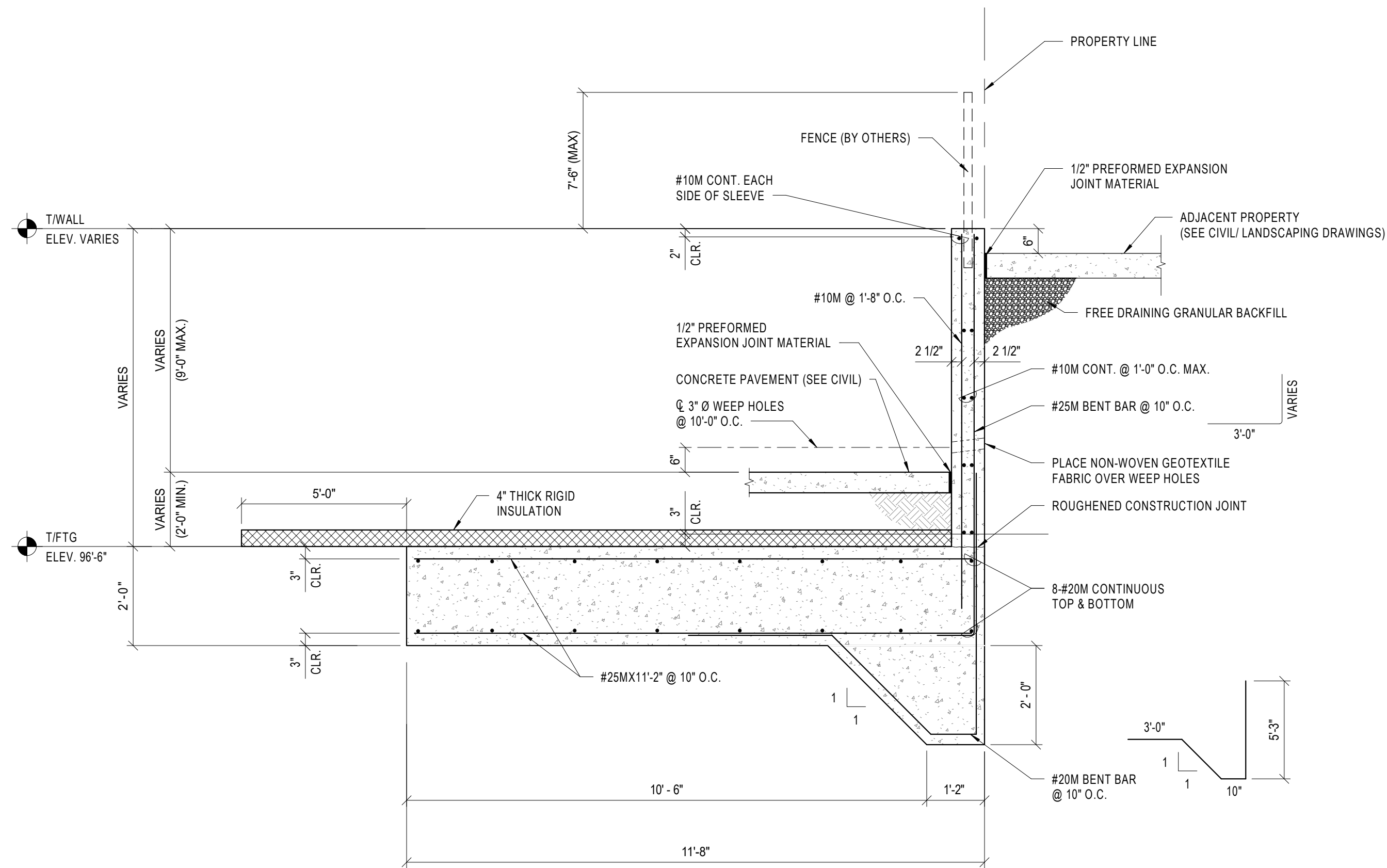
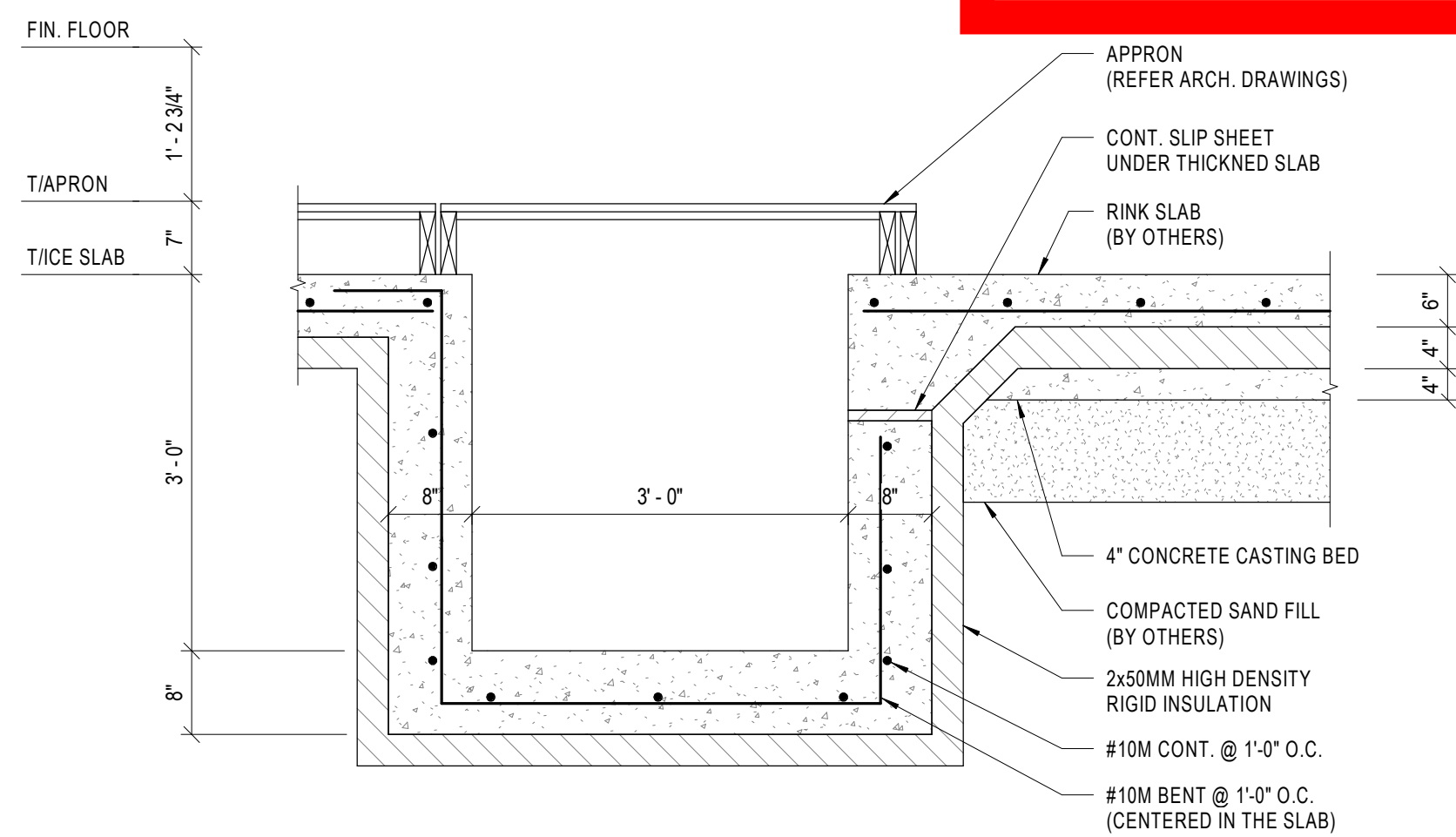


F49 SLAB ELEVATION CHANGE SECTION
S200 SCALE: NOT TO SCALE

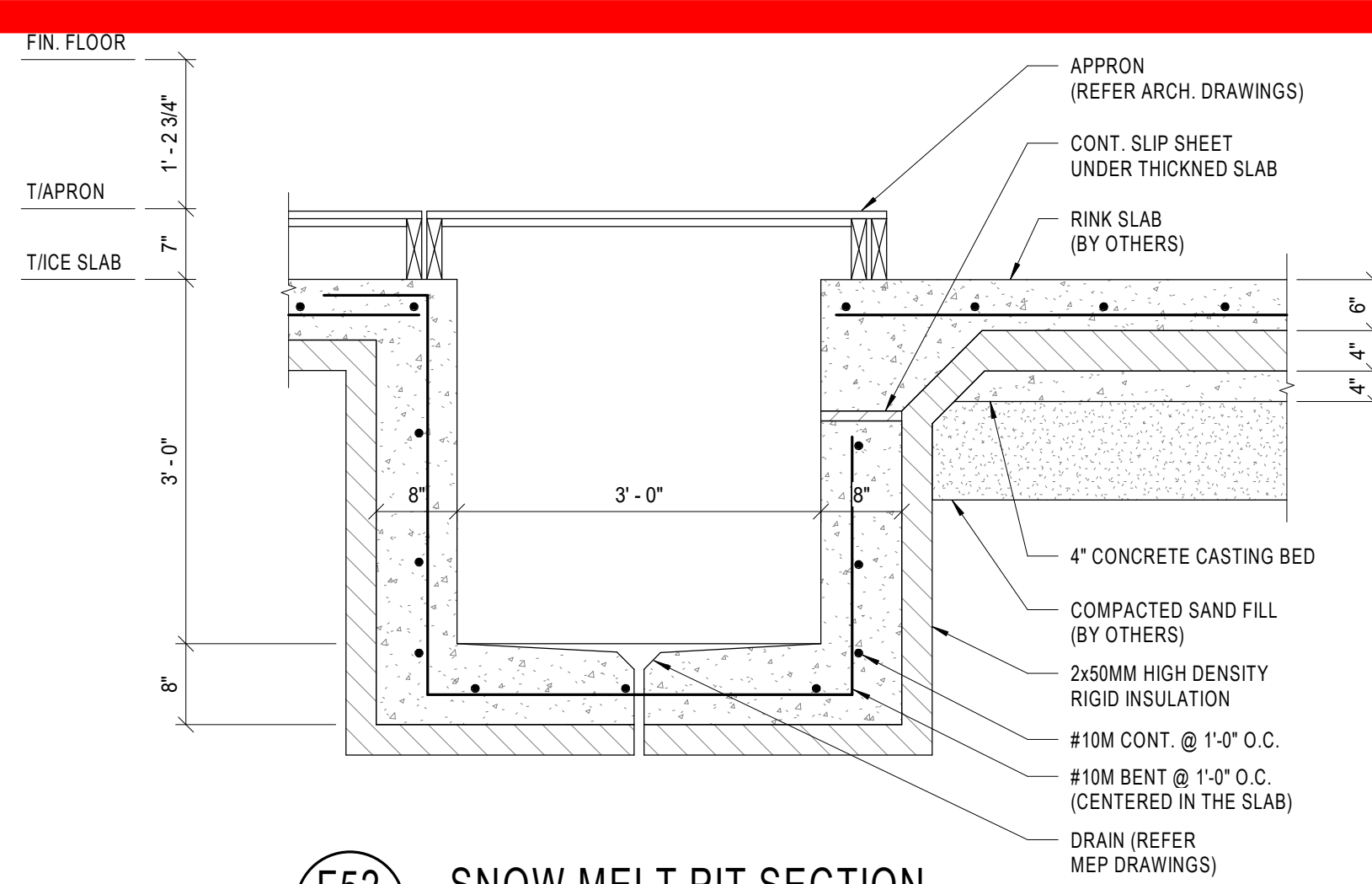


F50a RETAINING WALL SECTION
SCALE: NOT TO SCALE

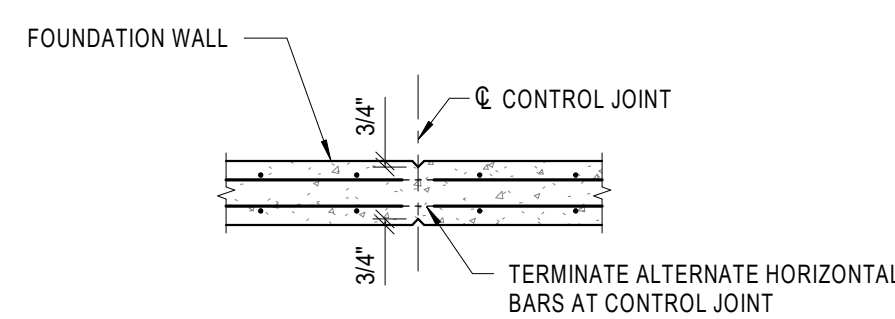
- NOTES:**
1. SEE CIVIL DRAWINGS FOR LENGTH & LOCATION OF WALL.
 2. PROVIDE CONTROL JOINTS @ 30'-0" MAX. WITH VERTICAL CHAMFER AT EACH FACE OF WALL AND CUT EVERY OTHER HORIZONTAL BAR.
 3. RAILING TO BE SET IN HOLES W/ NON-SHRINK GROUT.



F51 TRENCH SECTION
S200 SCALE: NOT TO SCALE

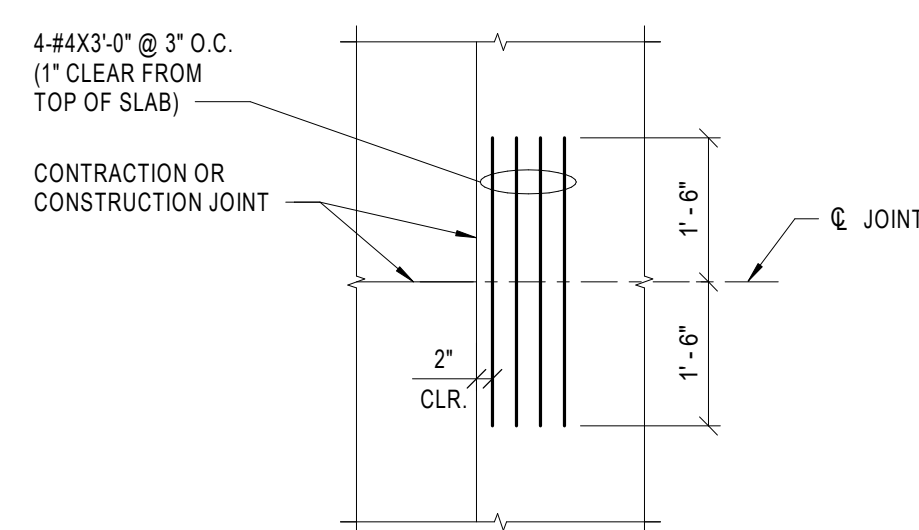


F52 SNOW MELT PIT SECTION
S200 SCALE: NOT TO SCALE

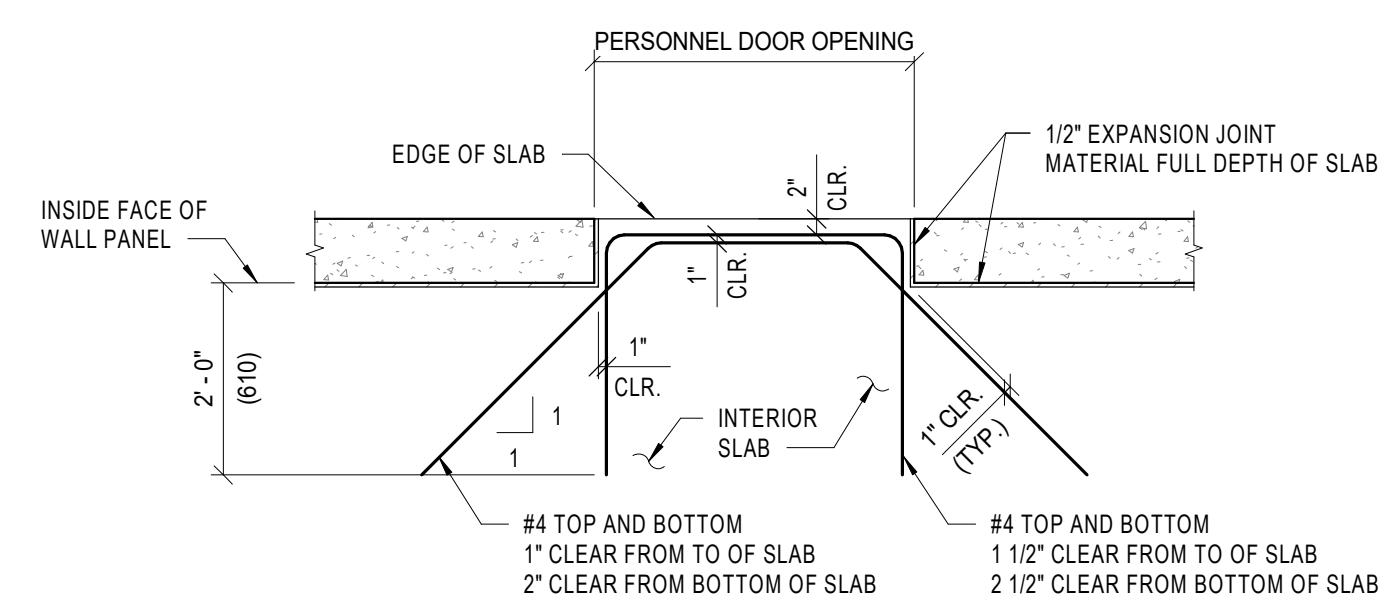


FOUNDATION WALL CONSTRUCTION/CONTRACTION JOINT
SCALE: NOT TO SCALE

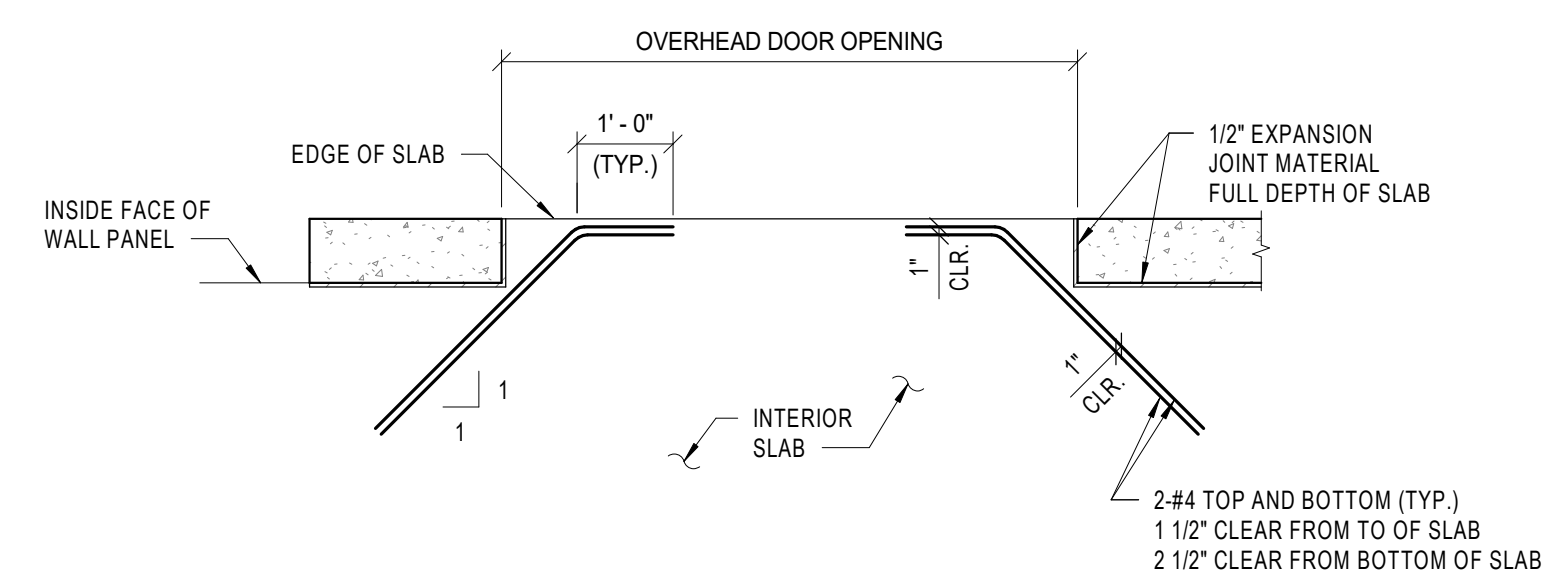
NOTE:
LOCATE CONTROL JOINTS @ 30'-0" MAX.



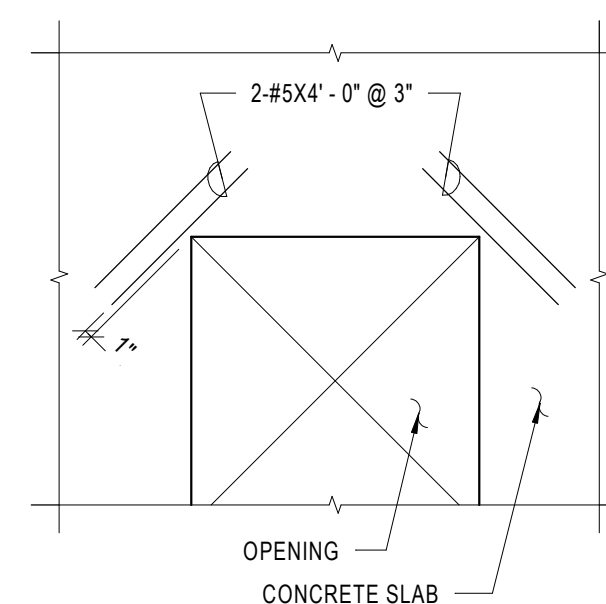
TYPICAL DEAD END CONTROL JOINT REINFORCING
SCALE: NOT TO SCALE



SLAB REINFORCEMENT @ PERSONNEL DOORS
SCALE: NOT TO SCALE

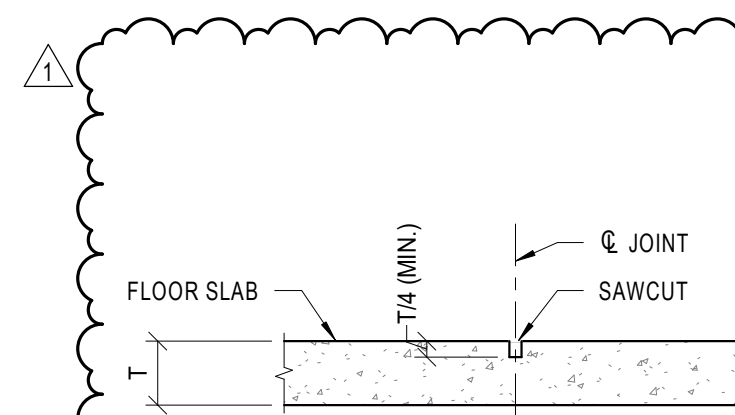


SLAB REINFORCEMENT @ OVERHEAD DOORS W/O LEVELER
SCALE: NOT TO SCALE



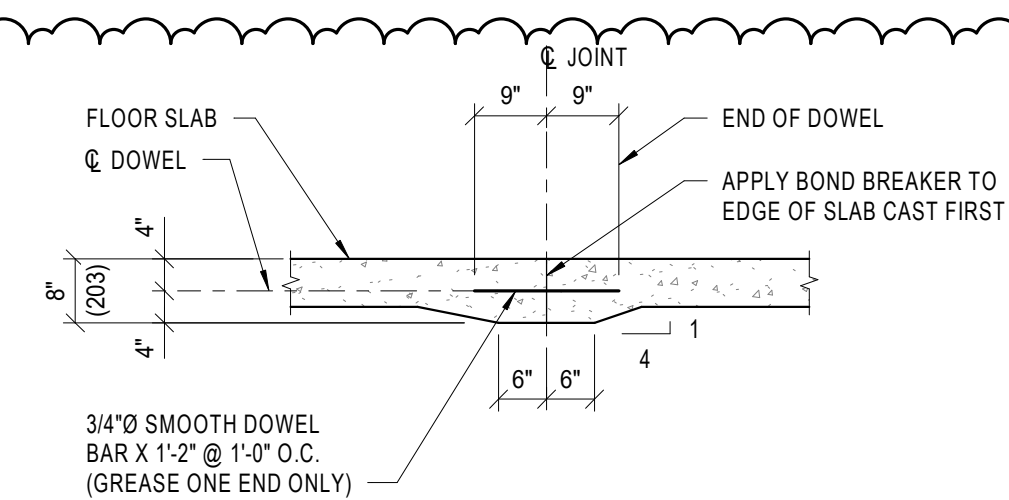
CRACK CONTROL REINFORCING

NOTE:
TYPICAL AT ALL REINTRANT CORNERS FOR SLAB-ON-GRADE & STRUCTURAL SLAB. REINFORCING TO BE CENTERED IN SLAB THICKNESS.



CONTRACTION JOINT

NOTE:
DEPTH OF SAWCUT MAY BE REDUCED TO 1 1/4" (± 1/4") IF EARLY-ENTRY SAW IS USED.



CONSTRUCTION JOINT

PROCEDURE FOR PLACING DOWELS IN CONSTRUCTION JOINT

1. GREASE HALF OF DOWEL PROTRUDING THROUGH THE EDGE OF FORMS INTO THE FIRST HALF OF SLAB POUR.
2. AFTER CONCRETE HAS REACHED INITIAL SET, TWIST DOWELS IN SLAB SEVERAL TURNS TO ENSURE EASE OF REMOVAL. REMOVE DOWELS AFTER 3 TO 4 HOURS.
3. STRIP FORMS AND IMMEDIATELY REINSERT DOWELS INTO SLAB.
4. 1/4"X 1/2"X 1/2" PMA DIAMOND DOWELS @ 1'-0" O.C. MAY BE SUBSTITUTED FOR DOWEL BARS.

UPDATED RETAINING WALL DESIGN



LJB Inc.
We think bigger.
LJBinc.com
info@LJBinc.com
(866) 552-3536



MORLEY HOPPNER LIMITED
1818 BRADLEY SIDE RD.
CARP, ON K0A 1L0
CANADA
TEL: 1 (613) 831-5490



SUBJECT TO THE CONDITIONS, IF ANY, SET FORTH IN OUR LETTER DATED March 17, 2022, THIS PLAN IS APPROVED BY
THE CITY OF OTTAWA THIS 17 DAY OF MARCH, 2022.

Court Curry
COURT CURRY, MANAGER
DEVELOPMENT REVIEW WEST
PLANNING, REAL ESTATE AND ECONOMIC DEVELOPMENT DEPARTMENT, CITY OF OTTAWA

GRANITE CURLING CLUB
2740 QUEENSVIEW DRIVE
OTTAWA, ON

REV	DATE	RELEASED FOR
1	01-24-2022	TENDER - ADDENDUM 1
	12-22-2021	ISSUE FOR TENDER
	12-03-2021	ISSUE FOR PERMIT
	10-22-2021	ISSUED FOR 70% REVIEW
	09-17-2021	95% FOUNDATION & FRAMING
	09-03-2021	95% FRAMING
	08-23-2021	PROGRESS SET

DESIGNED	AGR	JOB NUMBER	0121516A.00
DRAWN	APZX	DATE	
CHECKED	EPS/UBR	10/08/2021	

FOUNDATION DETAILS

S220