

# PROJET | PAYSAGE

24 Mont-Royal O. Bureau 801 Montréal Québec H2T 2S2  
T: 514.849.7700 F: 514.849.2027 info@projetpaysage.com



IMAGE CONCEPTUELLE. LES SPÉCIFICATIONS DES PLANS ET DEVIS PEUVENT VARIER

CLIENT:



MAGIL LAURENTIENNE

PROJECT: **979, WELLINGTON**

ML Wellington Realty Investments Inc.  
C/O ML DEVCO INC  
651, Churchill Avenue N  
Ottawa (Ontario) K1Z 5G2  
Tel: 613-686-6319

## Architecture de paysage / Landscape Architecture

FEUILLET / SHEET	TITRE / TITLE	ÉCHELLE / SCALE
AP-10	PLAN D'ENSEMBLE / SITE PLAN	1:100
AP-20	PLAN DE DESCRIPTION / DESCRIPTION PLAN	1:100
AP-30	PLAN DE PLANTATION / PLANTING PLAN	1:100
AP-50	DÉTAILS DE CONSTRUCTION / CONSTRUCTION DETAILS	VARIÉES / VARIES
AP-51	DÉTAILS DE CONSTRUCTION / CONSTRUCTION DETAILS	VARIÉES / VARIES

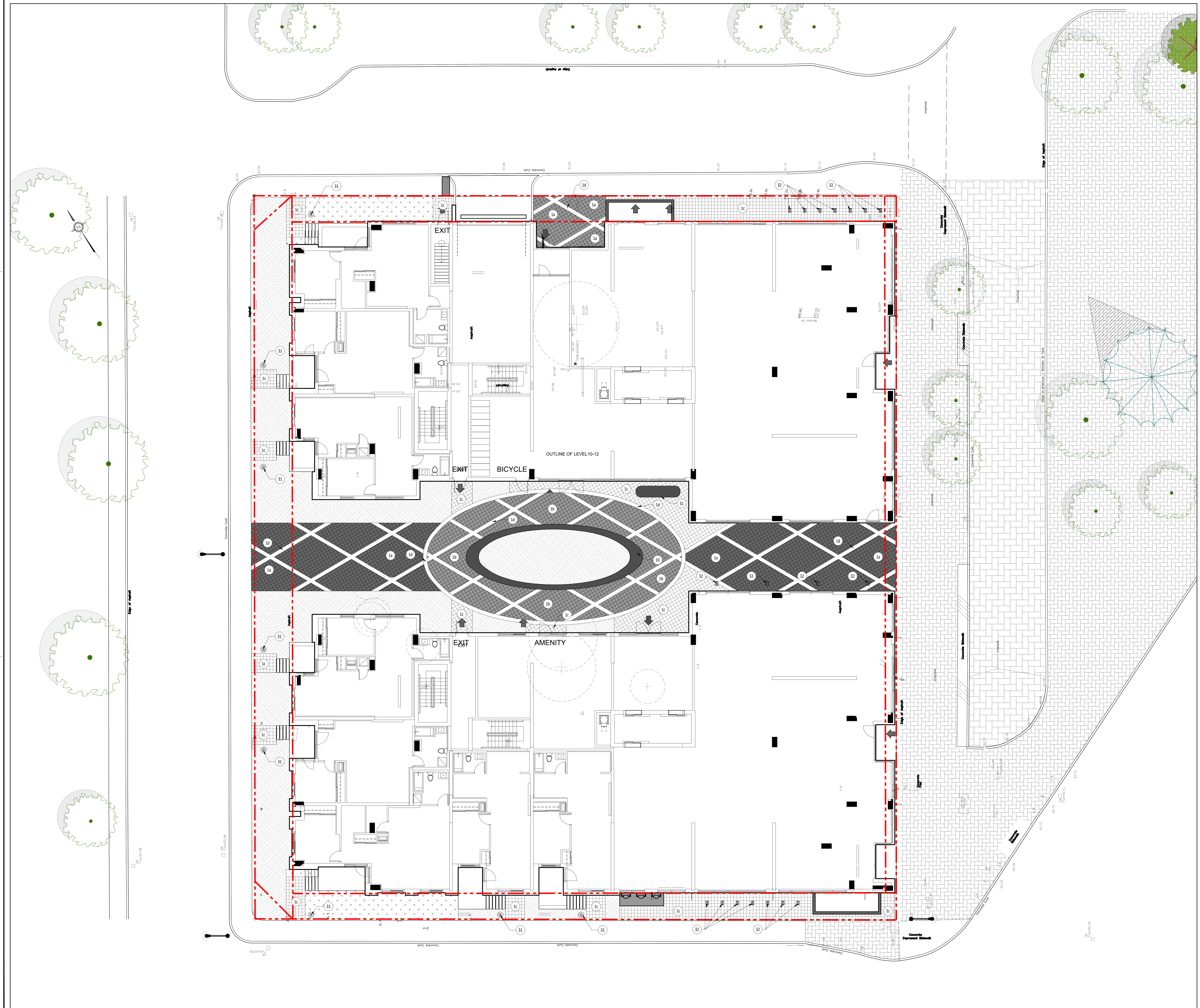
In collaboration with:

Architecture	Transportation Engineer	Geotechnical Engineer	Surveyor	Civil Engineer	Urban Planner
<b>RODERICK LAHEY</b> ARCHITECTS	<b>CGH TRANSPORTATION INC.</b>	<b>PATERSON GROUP</b>	<b>ANNIS O'SULLIVAN VOLLEBEKK LTD.</b> Ontario Land Surveyors	<b>IBI GROUP</b>	<b>FOTENN CONSULTANTS INC.</b>
56 Beech Street Ottawa, Ontario, K1S 3J6 T. 613.724.9932 E. admin@rlaarchitecture.ca	13 Markham Avenue Ottawa, Ontario, K2G 3Z1 T. 343.999.9117 E. christopher.gordon@cghtransportation.com	154 Colonnade Road South Ottawa, Ontario, K2E 7J5 T. 613.226.7381 E. md'arcy@patersongroup.ca	14 Concourse Gate, Suite 500, Nepean, Ontario, K2E 7S6 T. 613.727.0850 F. 613.727.1079 E. edh@aovltd.com	333 Preston Street, Suite 400 Ottawa, Ontario, K1S 5N4 T. 613.225.1311 F. 613.225.9868 E. jmoffatt@ibigroup.com	396 Cooper Street, Suite 300 Ottawa, Ontario, K2P 2H7 T. 613.730.5709 F. 613.730.1136 E. nitsche@fotenn.com









**LEGENDE**

--- Lot limit  
 - - - Intervention limit

**LIGHTING**

Code	Qty	Model	Colour	Fixing
L1	XX	STREET LAMP	To be determined	To be determined
L2	XX	LUMINOUS BOLLARD	To be determined	To be determined
L3	XX	LUMINOUS BOLLARD	To be determined	To be determined
L4	XX	PROJECTOR FOR SIGN	To be determined	To be determined

**IRRIGATION**

Planting areas to be irrigated.  
 Drip irrigation system.

Grassed and seeded surfaces to be irrigated.  
 Sprinkler irrigation system.

**MAGIL LAURENTIENNE**  
 ML Wellington Realty Investments Inc.  
 C/O ML DEVO INC.  
 651, Churchill Avenue N  
 Ottawa (Ontario) K1Z 5G2  
 Tel: 613-686-6319

Revisions

No	Description	Accr	Date
1	Preliminary issue	S.G.	11/15/21
2	Site Plan Control	S.G.	12/10/21
3	Site Plan Control	S.G.	12/13/21
4	Site Plan Control	S.G.	12/15/21
5	Site Plan Control	S.G.	03/18/22

**DO NOT USE FOR CONSTRUCTION**

- Notes:**
- The Contractor must verify all site existing conditions before beginning the work and inform the Project Director of any errors, omissions or contradictions.
  - Existing grades indicated on the plan come from the survey provided by the owner.
  - The Contractor must not cut down any existing vegetation without the approval of the Project Director.
  - Implementation of the works on site must be approved by the Project Director.
  - The Contractor must use the CAD file for implementation of all work.
  - The contractor must verify the amounts specified in the schedule and notify the landscape architect of any errors, omissions or contradictions before the close of the bid.

**PROJET | PAYSAGE**  
 24 Mont-Royal O. Bureau 801, Montréal, Québec H2T 2S2  
 T: 514 849 7700 F: 514 849 2027 info@projetpaysage.com

Professional seal

Project name: **979, WELLINGTON**

Drawing title: **LIGHTING AND IRRIGATION PLAN**

Scale: **1:100**

Designed by: S. Gallant  
 Drawn by: X. Benjamin  
 Approved by: S. Gallant  
 Date: November 2020

Sheet No.: **AP-40**  
 20-640



