

Ottawa (Head Office)

1800 Bantree Street
Ottawa, Ontario K1B 5L6

☎ 613.745.2444

☎ 613.745.9994

www.cwwcanada.com

1.866.695.0155

Montreal

2700 Sabourin Street
St-Laurent, Quebec H4S 1M2

☎ 514.738.2666

☎ 514.738.9762



INTEGRATED SEWER SOLUTIONS



LAURIER & SWEETLAND

Ottawa, Ontario

SEWER CCTV INSPECTION REPORT

Report ID

108465SA1

Sewer Use

Sanitary

Completion Date

October 13, 2021

Inspected Length

128.60 meters

THE WAY IS CLEAR™

- Watermain Swabbing
- Hydro Vacuum Excavation
- CCTV Inspection of Sewers

- Plumbing & Drain Services
- Structural Rehabilitation of Manholes
- Cured-in-Place-Pipe Lining & Spot Repairs

- Grouting, Test & Seal Joints, Manholes & Services
- Lateral Sewer Inspection & Locates From Main
- Sewer Cleaning, Flushing & Pumping

Table of contents

	Page
1. Index of pipes	2
2. Structural rating	3
3. O&M rating	4
4. Pipe summary and condition details	5
5. Vision Report© Legend	14

1. Index of pipes

3 items

Inspected length : 128.60

Total length : 128.60

Pipe	Start/End	Direction	Road	Date	Inspected	Total	Page
MHSA38944 MHSA38945	MHSA38945 --> MHSA38944	Against flow	Sweetland Avenue	13/10/2021 10:12 AM	56.3	56.3	5
MHSA38944 MHSA39430	MHSA38944 --> MHSA39430	Direction of flow	Sweetland Avenue	13/10/2021 10:33 AM	24	24	8
MHSA39430 MHSA38775	MHSA39430 --> MHSA38775	Direction of flow	Laurier Avenue E	13/10/2021 11:07 AM	48.3	48.3	11

2. Structural rating

3 items

5 - Most significant defect grade (1 of 3 items)

Score	Quick	Index	Pipe	Start/End	Direction	Road	Page
10	5200	5	MHSA38944 MHSA39430	MHSA38944 --> MHSA39430	Direction of flow	Sweetland Avenue	8

0 - No Defects (2 of 3 items)

Score	Quick	Index	Pipe	Start/End	Direction	Road	Page
0	0000	0	MHSA38944 MHSA38945	MHSA38945 --> MHSA38944	Against flow	Sweetland Avenue	5
0	0000	0	MHSA39430 MHSA38775	MHSA39430 --> MHSA38775	Direction of flow	Laurier Avenue E	11

3. O&M rating

3 items

2 - Minor to Moderate (2 of 3 items)

Score	Quick	Index	Structural	Pipe	Start/End	Direction	Road	Page
12	2600	2	0	MHSA39430 MHSA38775	MHSA39430 --> MHSA38775	Direction of flow	Laurier Avenue E	11
2	2100	2	5	MHSA38944 MHSA39430	MHSA38944 --> MHSA39430	Direction of flow	Sweetland Avenue	8

0 - No Defects (1 of 3 items)

Score	Quick	Index	Structural	Pipe	Start/End	Direction	Road	Page
0	0000	0	0	MHSA38944 MHSA38945	MHSA38945 --> MHSA38944	Against flow	Sweetland Avenue	5

4. Pipe summary and condition details

Pipe identification

Pipe: MHSA38944 MHSA38945	Direction of inspection: MHSA38945 --> MHSA38944
Direction of flow: MHSA38944 --> MHSA38945	Direction: Against flow

Pipe location

Road: Sweetland Avenue	<u>UPSTREAM</u>	<u>DOWNSTREAM</u>
Crossroad:	Easting (X):	Easting (X):
Drainage Area:	Northing (Y):	Northing (Y):
City: Ottawa	Elevation (Z):	Elevation (Z):
Location: Light Highway	GPS Accuracy:	
Owner: J.L. Richards	Corrdinate System:	
Road segment:	Vertical Datum:	

Pipe characteristics

Sewer Use: Sanitary	Inspected length: 56.3
Height: 250	Total length: 56.3
Width:	Rim/Inv.:
Shape: Circular	Grade/Inv.:
Material: Polyvinyl Chloride	Rim/Grade:
Lining:	Rim/Inv.:
Joint length: 4	Grade/Inv.:
Year laid:	Rim/Grade:
Year renewed:	Sewer category:

Additional details

Date: 13/10/2021 10:12 AM	Location details:
Project Number: Laurier Ave E	Surveyed by: Jonathan Larocque
Customer: J.L. Richards-108465	Certificate #: U06180703002189
PO number:	Pre-Cleaning: Jetting
Work order: 108465	Date cleaned:
Purpose:	Unit of measurement: Metric
Weather: Dry	Media label: 108465SA1
Flow control: Not Controlled	Sheet #:

Structural rating

O&M rating

Overall rating

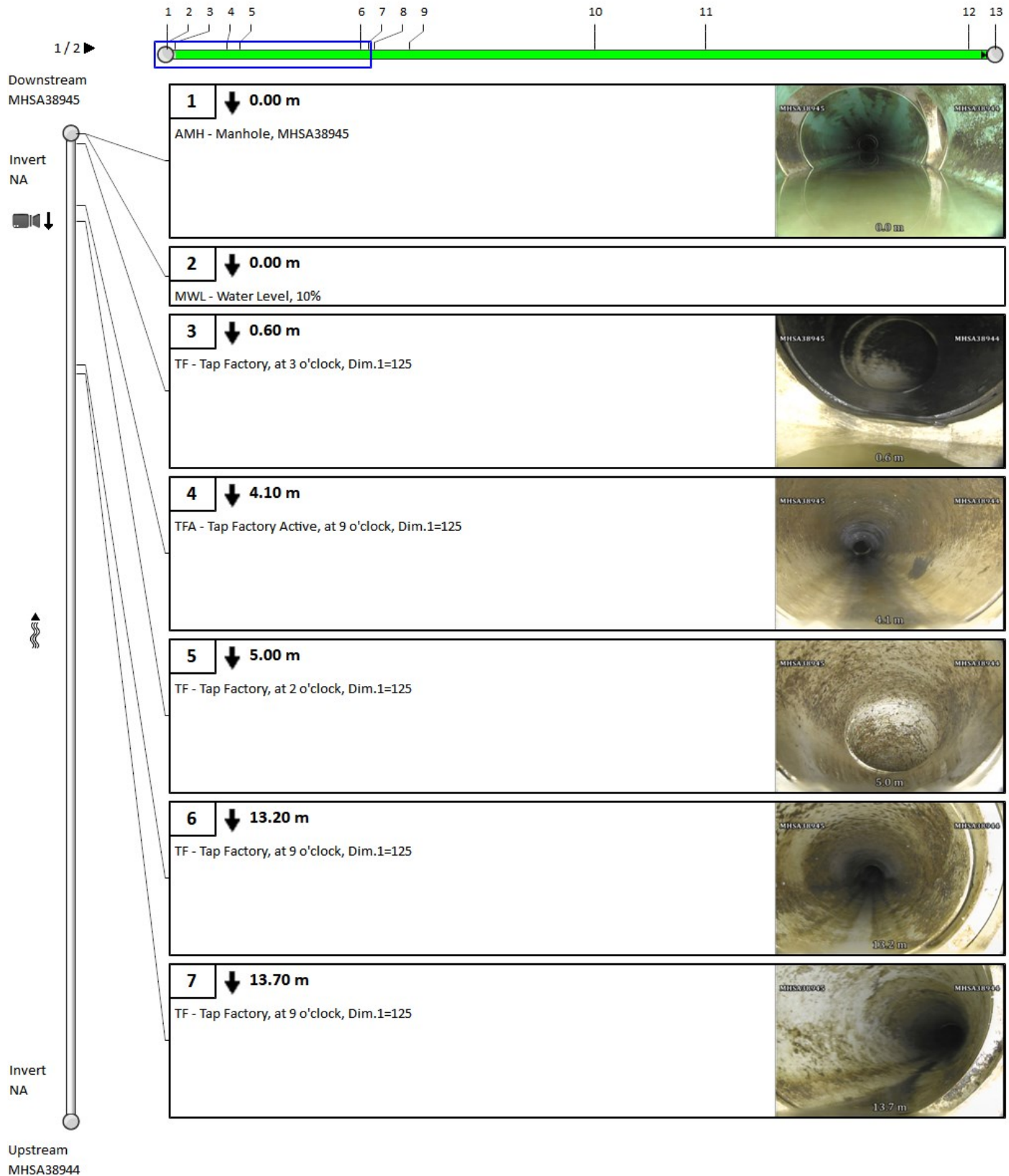
Peak: 0	Peak: 0	Peak: 0
Quick rating: 0000	Quick rating: 0000	Quick rating: 0000
Score: 0	Score: 0	Score: 0
Index: 0	Index: 0	Index: 0

Additional information

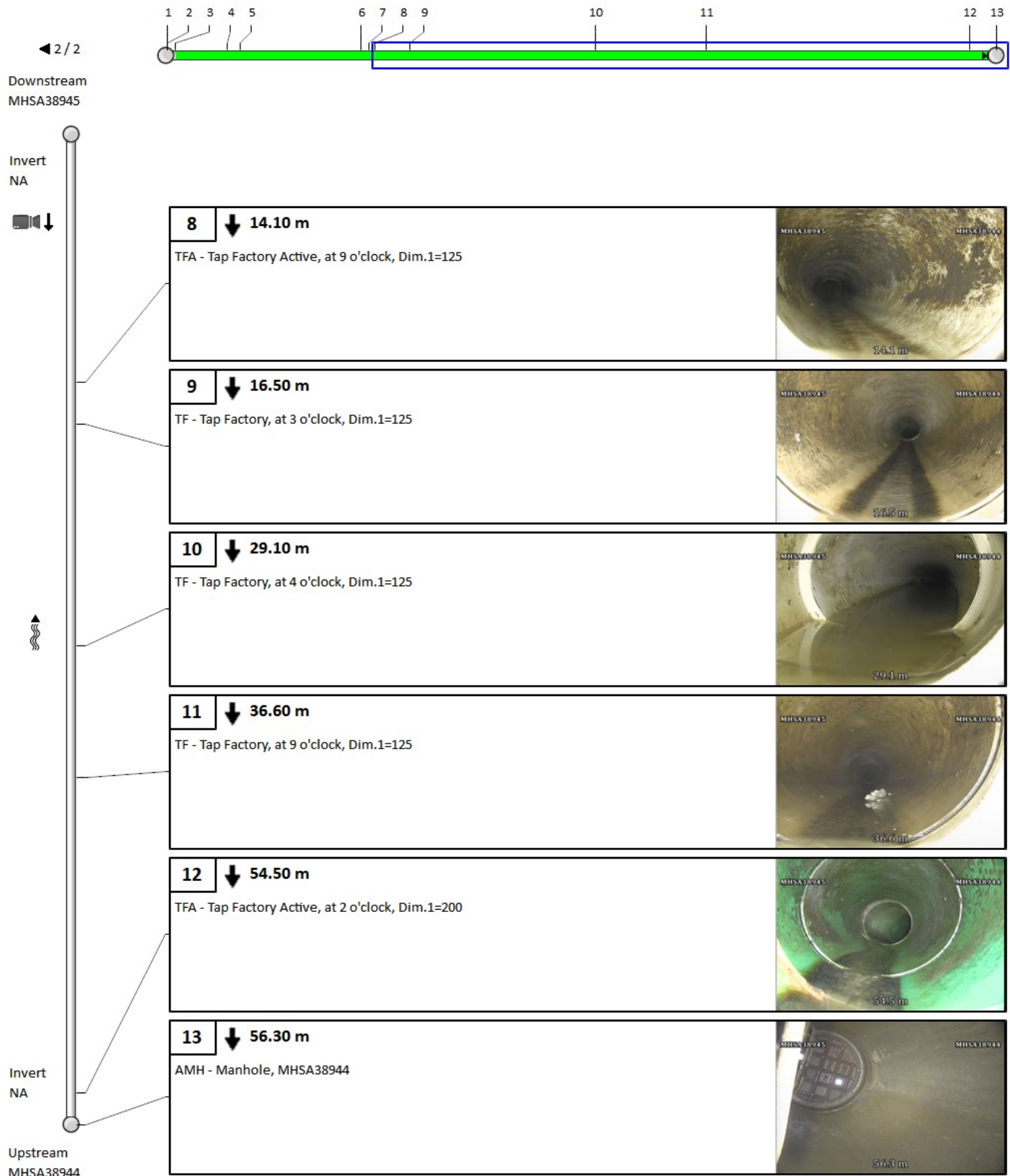
Other information

Report ID: 108465SA1	Information 6:
Information 2:	Information 7:
Information 3:	Information 8:
Information 4:	Information 9:
Information 5:	Information 10:

4. Pipe summary and condition details



4. Pipe summary and condition details



4. Pipe summary and condition details

Pipe identification

Pipe:	MHSA38944 MHSA39430	Direction of inspection:	MHSA38944 --> MHSA39430
Direction of flow:	MHSA38944 --> MHSA39430	Direction:	Direction of flow

Pipe location

Road:	Sweetland Avenue	<u>UPSTREAM</u>	<u>DOWNSTREAM</u>
Crossroad:		Easting (X):	Easting (X):
Drainage Area:		Northing (Y):	Northing (Y):
City:	Ottawa	Elevation (Z):	Elevation (Z):
Location:	Light Highway	GPS Accuracy:	
Owner:	J.L. Richards	Corrdinate System:	
Road segment:		Vertical Datum:	

Pipe characteristics

Sewer Use:	Sanitary	Inspected length:	24
Height:	250	Total length:	24
Width:		Rim/Inv.:	
Shape:	Circular	Grade/Inv.:	
Material:	Polyvinyl Chloride	Rim/Grade:	
Lining:		Rim/Inv.:	
Joint length:	2	Grade/Inv.:	
Year laid:		Rim/Grade:	
Year renewed:		Sewer category:	

Additional details

Date:	13/10/2021 10:33 AM	Location details:	
Project Number:	Laurier Ave E	Surveyed by:	Jonathan Larocque
Customer:	J.L. Richards-108465	Certificate #:	U06180703002189
PO number:		Pre-Cleaning:	Jetting
Work order:	108465	Date cleaned:	
Purpose:		Unit of measurement:	Metric
Weather:	Dry	Media label:	108465SA1
Flow control:	Not Controlled	Sheet #:	

Structural rating

O&M rating

Overall rating

Peak:	5	Peak:	2	Peak:	5
Quick rating:	5200	Quick rating:	2100	Quick rating:	5221
Score:	10	Score:	2	Score:	12
Index:	5	Index:	2	Index:	4

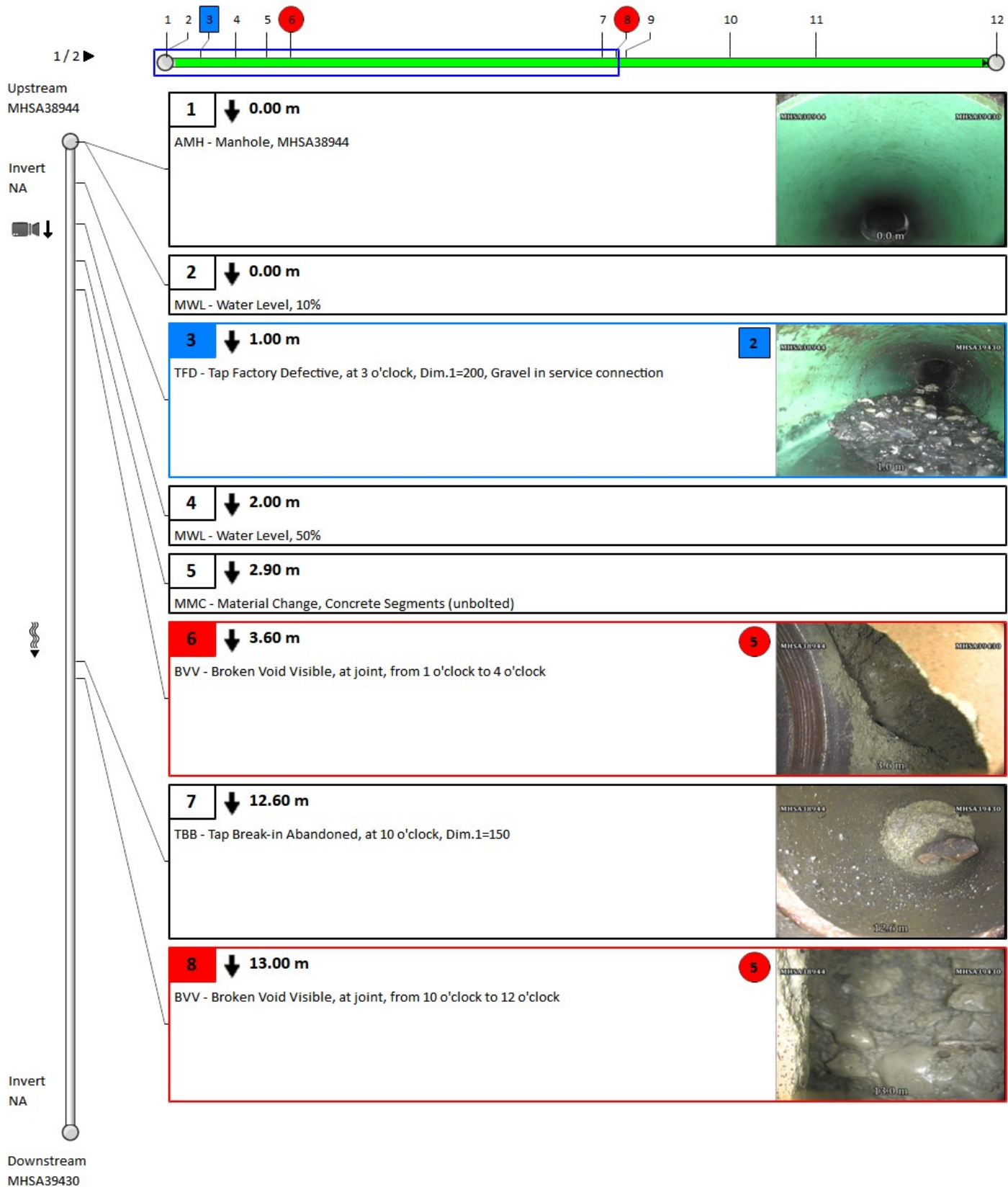
Additional information

--

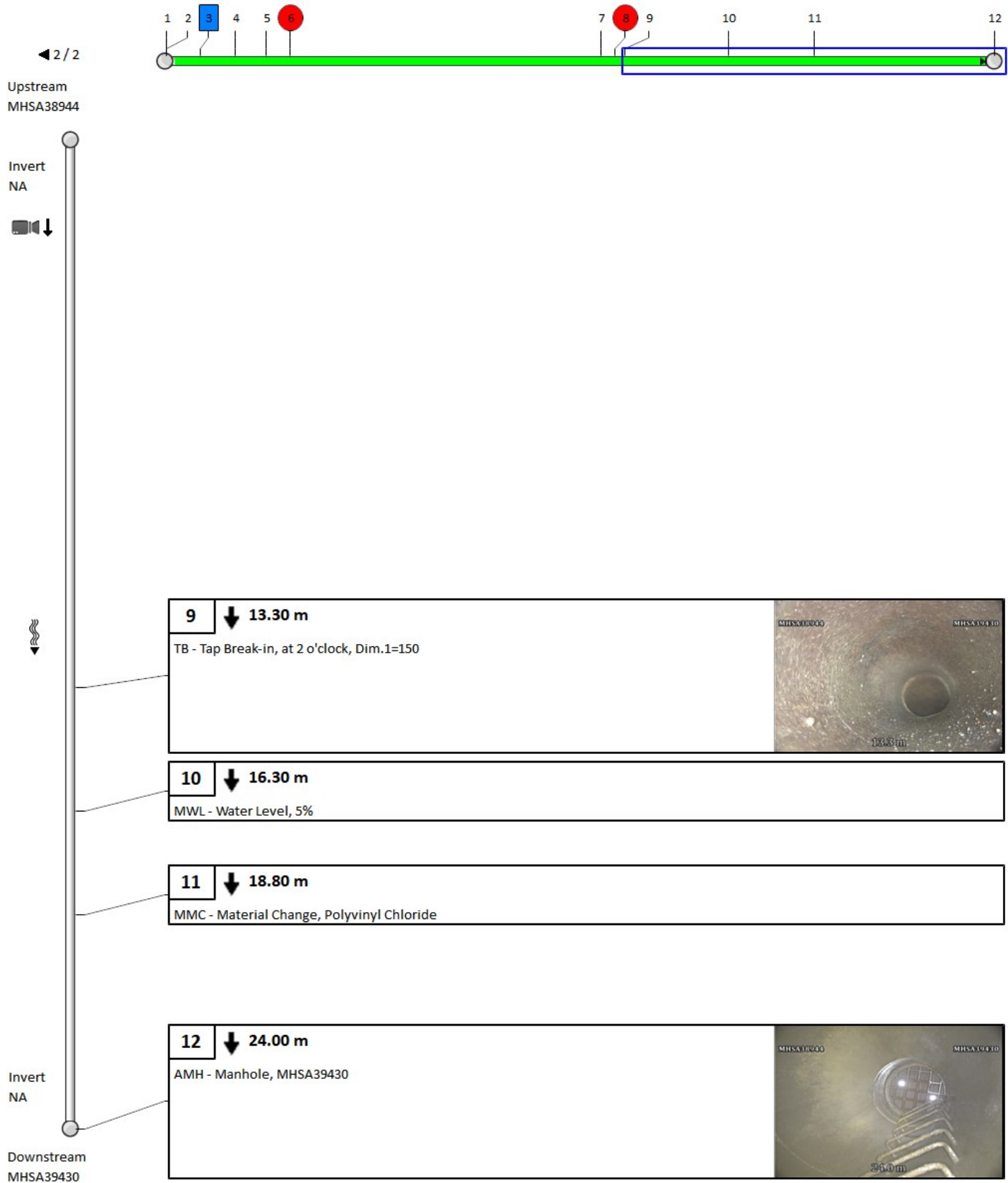
Other information

Report ID:	108465SA1	Information 6:	
Information 2:		Information 7:	
Information 3:		Information 8:	
Information 4:		Information 9:	
Information 5:		Information 10:	

4. Pipe summary and condition details



4. Pipe summary and condition details



4. Pipe summary and condition details

Pipe identification

Pipe: MHSA39430 MHSA38775	Direction of inspection: MHSA39430 --> MHSA38775
Direction of flow: MHSA39430 --> MHSA38775	Direction: Direction of flow

Pipe location

Road: Laurier Avenue E	<u>UPSTREAM</u>	<u>DOWNSTREAM</u>
Crossroad:	Easting (X):	Easting (X):
Drainage Area:	Northing (Y):	Northing (Y):
City: Ottawa	Elevation (Z):	Elevation (Z):
Location: Light Highway	GPS Accuracy:	
Owner: J.L. Richards	Corrdinate System:	
Road segment:	Vertical Datum:	

Pipe characteristics

Sewer Use: Sanitary	Inspected length: 48.3
Height: 250	Total length: 48.3
Width:	Rim/Inv.:
Shape: Circular	Grade/Inv.:
Material: Polyvinyl Chloride	Rim/Grade:
Lining:	Rim/Inv.:
Joint length: 4	Grade/Inv.:
Year laid:	Rim/Grade:
Year renewed:	Sewer category:

Additional details

Date: 13/10/2021 11:07 AM	Location details:
Project Number: Laurier Ave E	Surveyed by: Jonathan Larocque
Customer: J.L. Richards-108465	Certificate #: U06180703002189
PO number:	Pre-Cleaning: Jetting
Work order: 108465	Date cleaned:
Purpose:	Unit of measurement: Metric
Weather: Dry	Media label: 108465SA1
Flow control: Not Controlled	Sheet #:

Structural rating

O&M rating

Overall rating

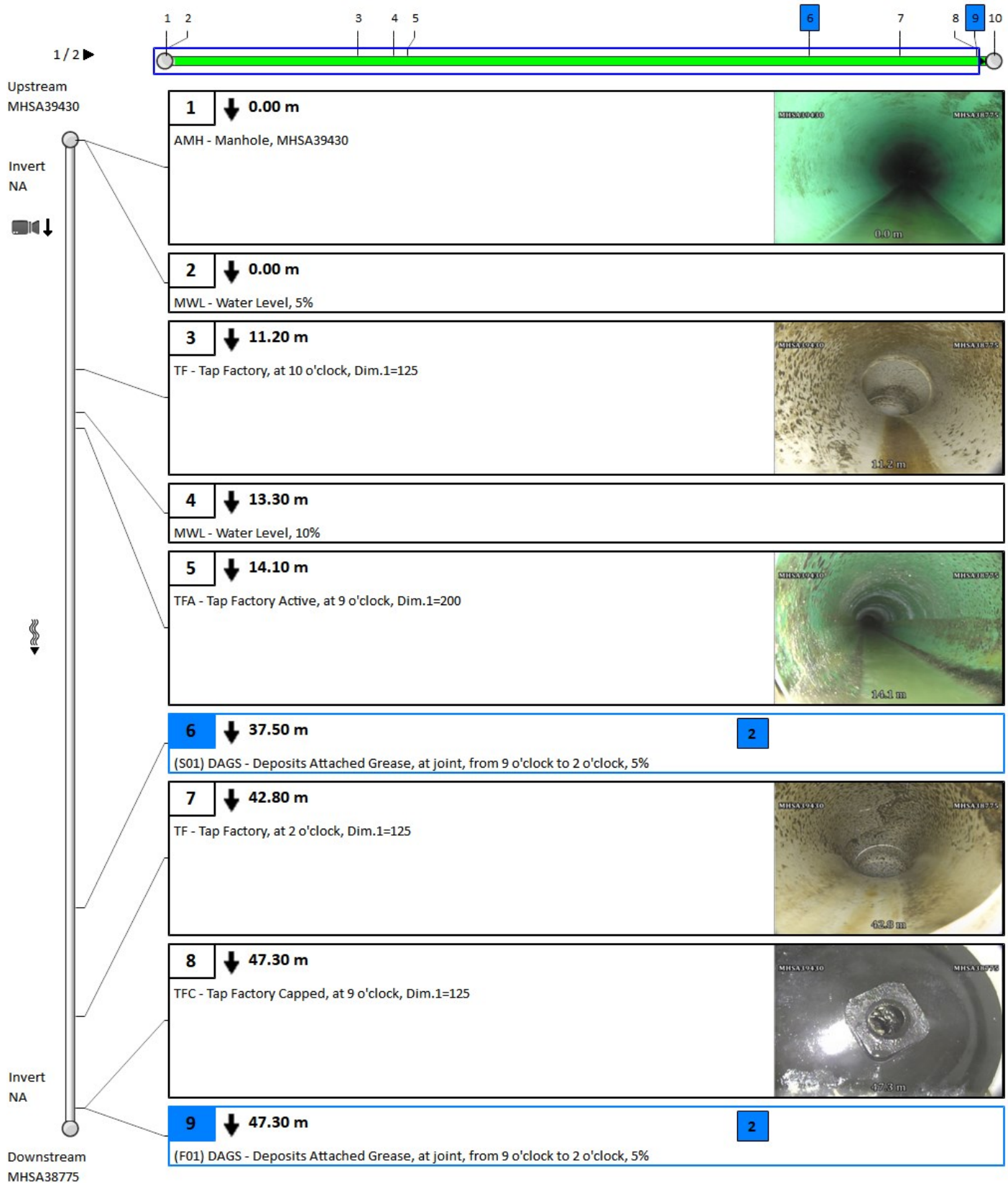
Peak: 0	Peak: 2	Peak: 2
Quick rating: 0000	Quick rating: 2600	Quick rating: 2600
Score: 0	Score: 12	Score: 12
Index: 0	Index: 2	Index: 2

Additional information

Other information

Report ID: 108465SA1	Information 6:
Information 2:	Information 7:
Information 3:	Information 8:
Information 4:	Information 9:
Information 5:	Information 10:

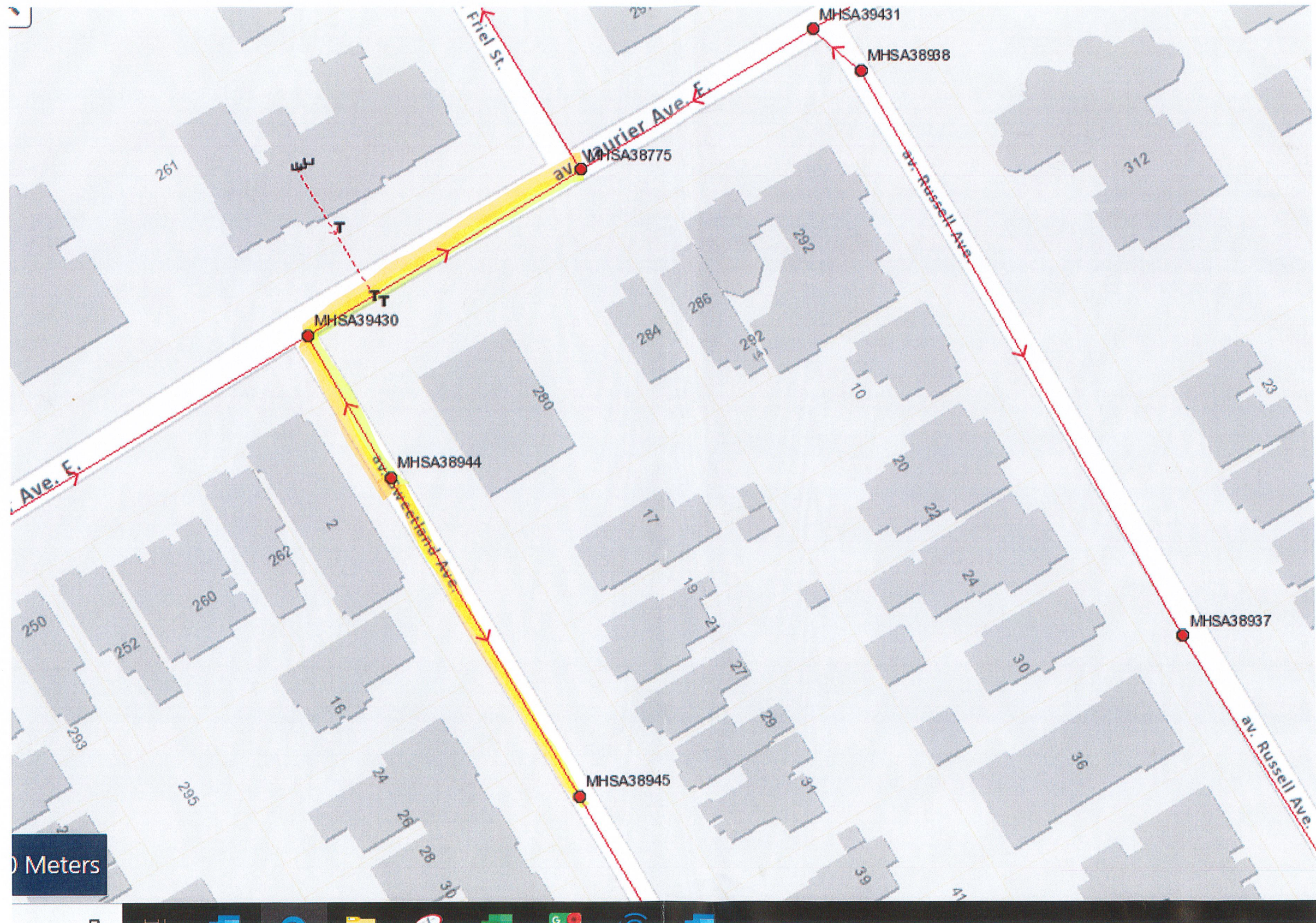
4. Pipe summary and condition details








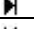
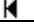







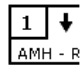
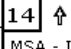
4. Pipe summary and condition details



108465



Vision Report© Legend

	The numbers sequentially indicate each observation that was picked up throughout the inspection period. This will allow you to sift through the pages and view the accompanying description and photos in each section. Note that when a pipe section contains too many observations, Vision© Report must hide secondary observations in order to optimize the display.*
60	A number with neither a square nor circle indicates a general observation.
	A circled number indicates a structural anomaly. The color of the circle indicates the severity of the anomaly on a scale of 1 to 5, 5 being the most severe: green=1, blue=2, magenta=3, orange=4 and red=5.
	A number in a square indicates an operation and maintenance anomaly. The color of the square indicates the severity of the anomaly on a scale of 1 to 5, 5 being the most severe: green=1, blue=2, magenta=3, orange=4 and red=5.
◀ 3 / 31 ▶	Indicates the current page number of the inspection report.
	The blue square indicates a section of the pipe; this section is covered in detail on the current page of the report.
	The green line indicates the inspected part of the pipe. The remaining white line indicates the uninspected part of the pipe.
	Indicates the hold points on the camera during an inspection.
	Indicates the hold points on the camera during the reverse inspection.
	Indicates that a reverse inspection was carried out, however the camera did not reach the initial inspection hold point. (the hold point of the initial inspection)
	Indicates that a reverse inspection was carried out and that it has joined (has arrived at) the initial inspection hold point.
401-059B 	Identifies the start manhole number. Note that this manhole is not necessarily the upstream manhole of the pipe.
401-631 	Identifies the end manhole number. Note that this manhole is not necessarily the downstream manhole of the pipe.
	A downward arrow indicates that the inspection was carried out in the direction of the current, whereas an upward arrow indicates an inspection against the current. Note that the manhole located on the upper left of the page is always the start manhole, but not necessarily the upstream manhole of the pipe.
	This camera followed by a downward arrow is located on the upper left of the vertical pipe; it indicates that an inspection was done from this manhole.
	When the second camera appears on the bottom left page it means that a reverse inspection was carried out. Information about the reverse inspection is included in the report, thereby combining both inspections.
Invert 3.40	The measurement shown under the word <Invert> indicates the measurements between the frame and the pipe captured during the inspection. This measurement is available at the top left for the start manhole and the bottom left for the end manhole. If the invert was not measured during the inspection, an <NA> mark will be displayed.
	The downward bold arrow to the right of the observation number indicates that this observation was captured during the initial inspection.
	The blank arrow pointing upwards and located to the right of the observation number indicates that this observation was taken during the reverse inspection period, thereby confirming that this report combined both inspections.
18.40 m	Located to the right of the observation number is a number identifying the observation distance in relation to the start of the pipe.
SRV - Armature visib	A full description of the observation code according to the protocol used.

*Any hidden observations are readily accessible from the database as well as in other CTSpec report templates.

** CTSpec inc. reserves the right to modify, eliminate or add to the product features described in this pamphlet without notice.

© 2012 CTSpec inc. All rights reserved.