

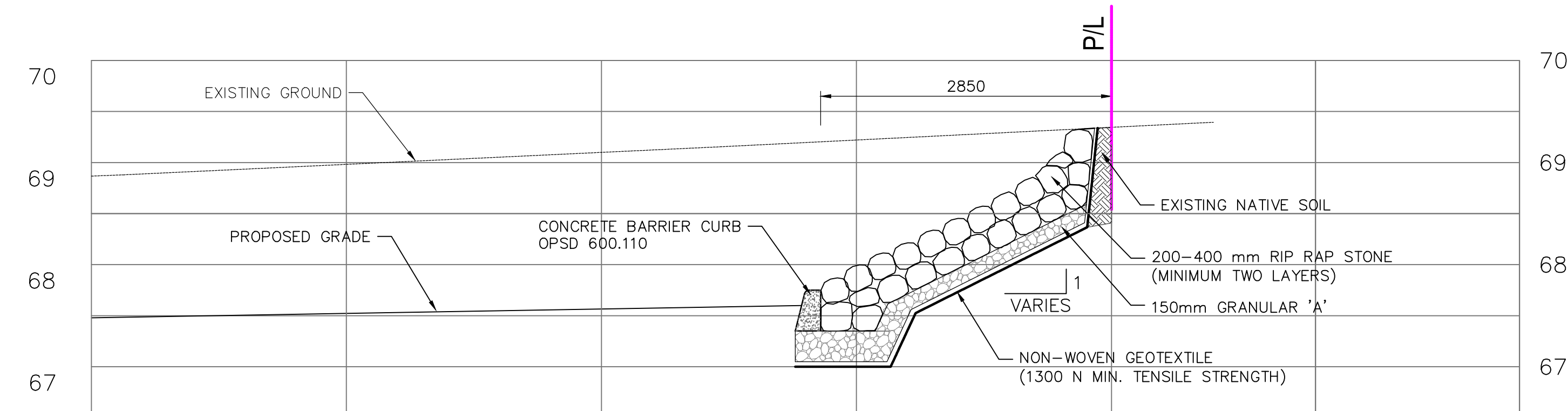
Conditions of Use
 Verify elevations and/or dimensions on drawing prior to use. Report any discrepancies to Dillon Consulting Limited.
 Do not scale dimensions from drawing.
 Do not modify drawing, re-use it, or use it for purposes other than those intended at the time of its preparation without prior written permission from Dillon Consulting Limited.

GENERAL GRADING NOTES:

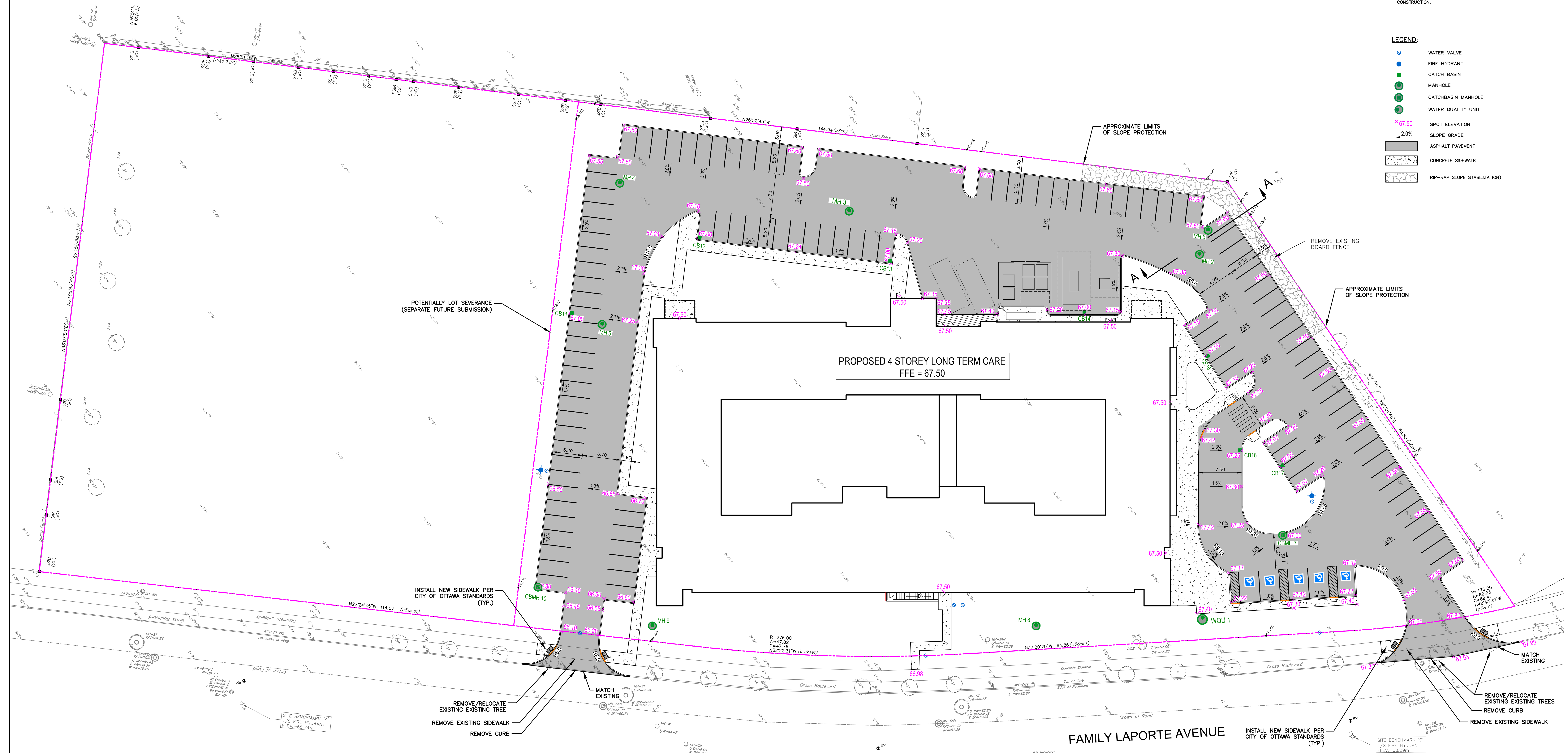
- CONTRACTOR TO CONSTRUCT SITE TO WITHIN 5mm OF DESIGN GRADES AND DIMENSIONS, UNLESS OTHERWISE NOTED.
- ALL PROPOSED LANDSCAPE AREAS WITHIN CURB AND PROPERTY LIMITS TO BE GRADED 300mm BELOW TOP OF CURB WITH APPROVED FILL MATERIALS, MECHANICALLY COMPACTED TO 98% STANDARD PROCTOR MAXIMUM DENSITY. SEE LANDSCAPE DRAWINGS FOR BALANCE OF WORK.
- SPOT ELEVATIONS INDICATE TOP OF PAVEMENT.
- CONTRACTOR TO PROVIDE TRAFFIC CONTROL IN ACCORDANCE WITH ONTARIO TRAFFIC MANUAL BOOK 7 WHEN COMPLETING ANY WORKS WITHIN THE MUNICIPAL RIGHT-OF-WAY.
- ALL LINE PAINTING TO BE A DURABLE WATER BORNE TRAFFIC PAINT. PAVEMENT MARKINGS SHALL BE INSTALLED IN ACCORDANCE TO MANUFACTURER'S SPECIFICATIONS.
- ALL EXISTING TREES AND VEGETATION TO BE REMOVED PRIOR TO CONSTRUCTION.

LEGEND:

- WATER VALVE
- FIRE HYDRANT
- CATCH BASIN
- MANHOLE
- CATCHBASIN MANHOLE
- WATER QUALITY UNIT
- SPOT ELEVATION
- SLOPE GRADE
- ASPHALT PAVEMENT
- CONCRETE SIDEWALK
- RIP-RAP SLOPE STABILIZATION



SLOPE PROTECTION TYPICAL DETAIL
SECTION A-A
 1:40



1 12/02/2021 SPA - CBA SUBMISSION CDP

2 date: revision: by:

revisions

13/02/2021 SPA - CBA SUBMISSION CDP

date: revision: by:

All drawing and specifications are the property of the architect. The contractor shall verify all dimensions and information on site and report any discrepancy to architect before proceeding.

Arch Corp - LTC ORLEANS

FAMILLE LAPORTE AVENUE
OTTAWA, ON

SITE GRADING PLAN

scale: 1:250
 drawn by: DDP
 reviewed by: CDP
 job number: 21-047
 plot date: December 02, 2021
 drawing number: **CIV-2**