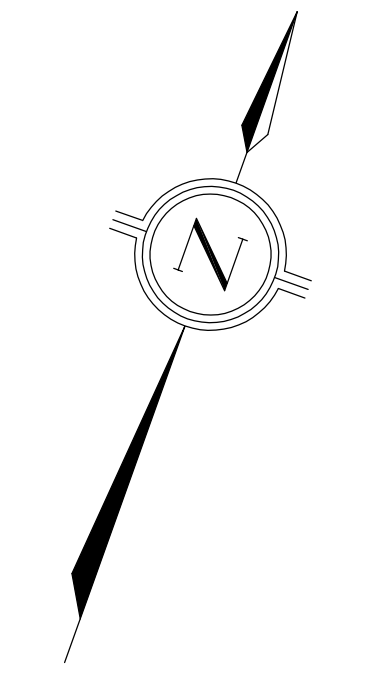
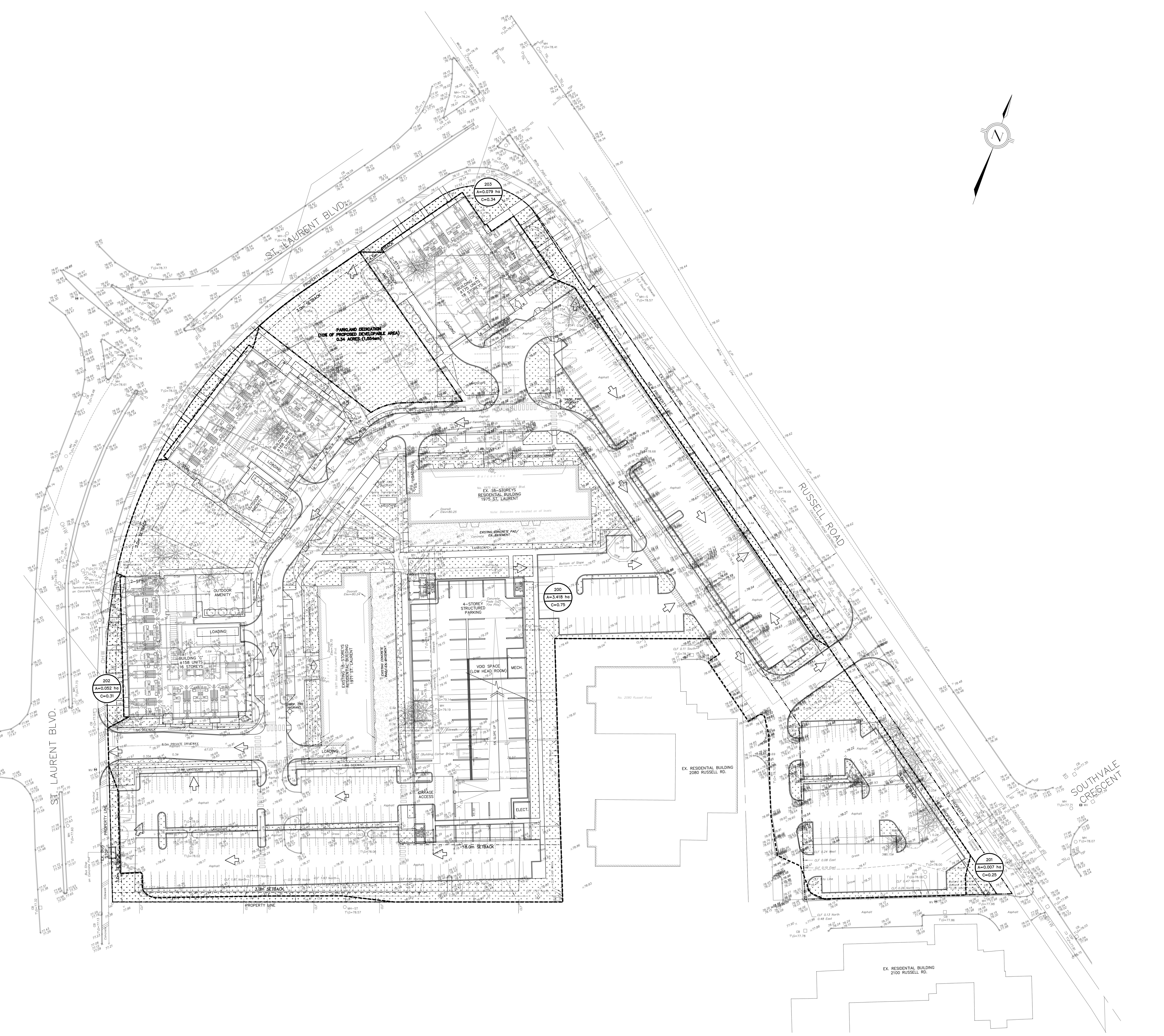


**LEGEND**

- EXISTING STORM SEWER
- TRIBUTARY NAME  
AREA (Ha)  
DRAINAGE COEFFICIENT
- PROPERTY LINE
- PROPOSED DRAINAGE BOUNDARY
- PROPOSED UNCONTROLLED DRAINAGE BOUNDARY
- PERVIOUS DRAINAGE AREA
- PROPOSED OVERLAND FLOW ROUTE



**LEGAL & TOPOGRAPHY**  
 PROVIDED BY: ANNE'S STUDIO, VOLLEBERG LTD.  
 14 CONCORSE GATE, SUITE 500  
 NAPESA, ONTARIO, CANADA  
 PHONE: (613) 727-0850

**BENCHMARK**  
 NOTE: BEARINGS ARE ASTROMONIC, DERIVED FROM THE EASTERLY LIMIT OF ST. LAURENT BOULEVARD, SHOWN TO BE NOT 12° 57'

**ELEVATION NOTE**  
 NOTES: ELEVATIONS SHOWN ARE GEODETIC AND ARE REFERRED TO THE CGVD28 GEODETIC DATUM.

NO.	ISSUED FOR SITE PLAN APPLICATION APPROVAL #1	DATE	BY	CITY
01	ISSUED FOR SITE PLAN APPLICATION APPROVAL #1	MAR 31, 2022	J.Y.	TORONTO
02	REVISIONS/ISSUED			

**counterpoint ENGINEERING**

COUNTERPOINT ENGINEERING INC.  
 8395 Ave St., Suite 100, Vaughan, ON L4K 5Y2 Phone: 905.306.1404 Fax: 905.306.1405

APPLICANT:  
**STARLIGHT DEVELOPMENTS INC.**  
 3280 BLOOR STREET WEST, CENTRE TOWER - UNIT# 1400  
 TORONTO, ONTARIO M8X 2X3  
 PHONE: (416) 234-8444  
 FAX: (416) 855-0192  
 CONTACT: MATTHEW CELLUCCI

SITE LOCATION:  
**PROPOSED RESIDENTIAL DEVELOPMENT**  
 MULTI-UNIT RESIDENTIAL TOWER DEVELOPMENT  
 1971 & 1975 ST. LAURENT BLVD., OTTAWA  
 SITE PLAN FILE NO.:

**POST-DEVELOPMENT STORM DRAINAGE PLAN**

DESIGNED BY: G.D.	CHECKED BY: J.Y.	DATE: MAR 11, 2022
DRAWING BY: G.D.	CHECKED BY: J.Y.	PROJECT NO. 21106
SCALE: 1:400m	DRAWING NO. SW-SWM2	