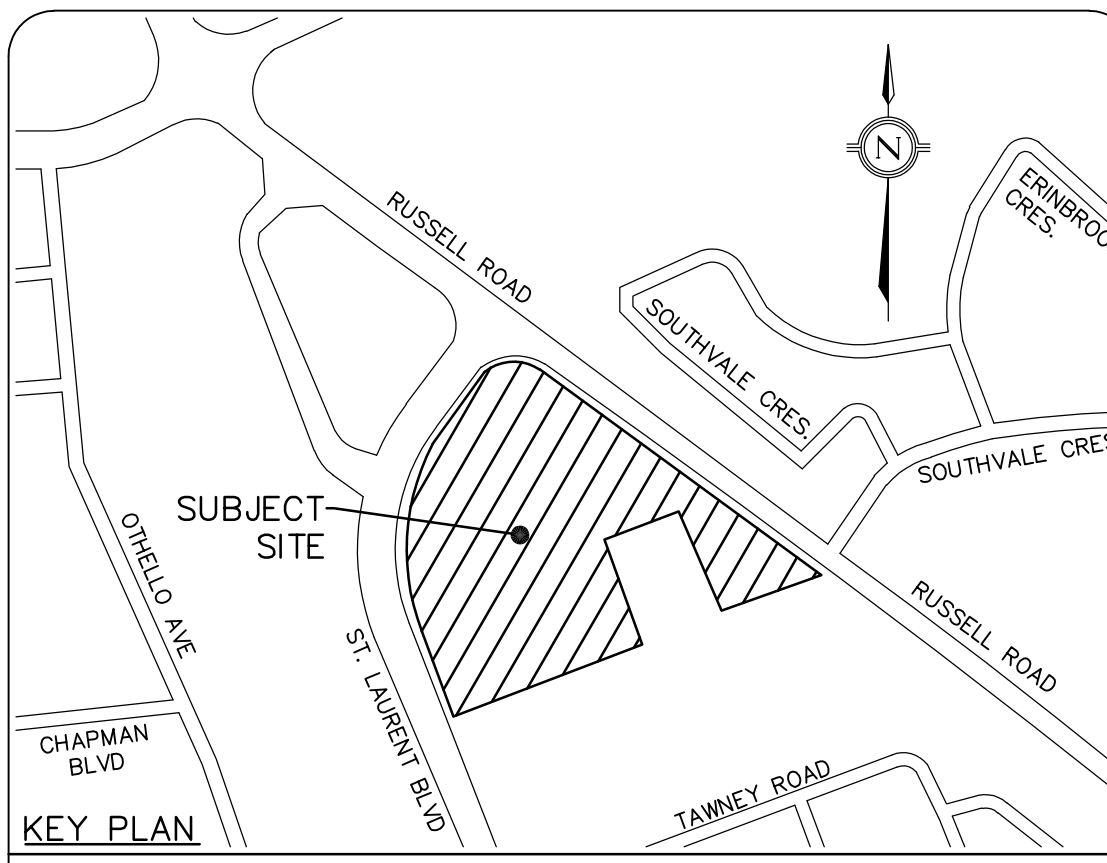
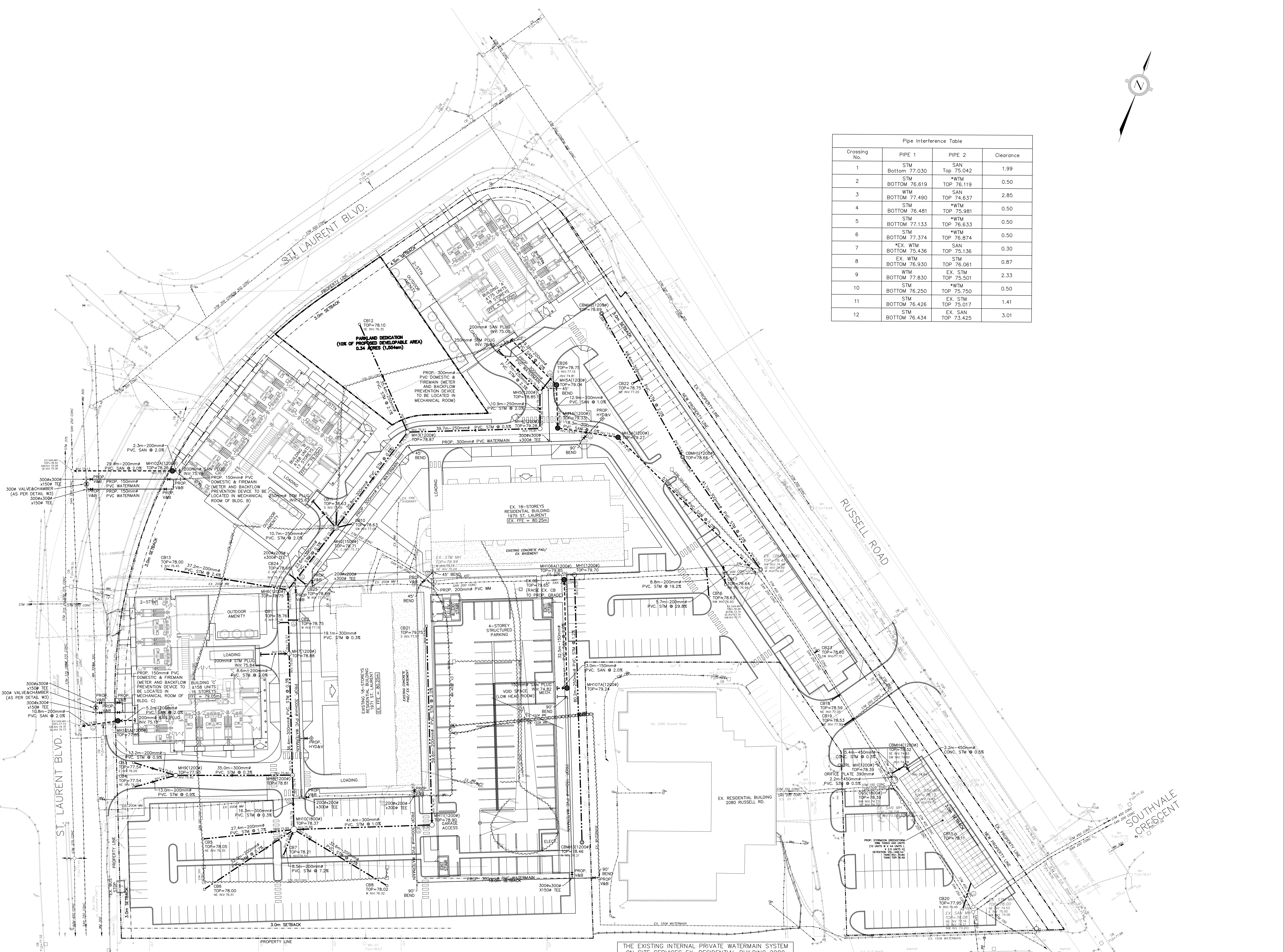


Pipe Interference Table			
Crossing No.	PIPE 1	PIPE 2	Clearance
1	STM Bottom 77.030	SAN Top 75.042	1.99
2	STM Bottom 75.619	*WTM Top 75.119	0.50
3	WTM Bottom 77.490	SAN Top 74.637	2.85
4	STM Bottom 75.481	*WTM Top 75.981	0.50
5	STM Bottom 77.133	*WTM Top 76.633	0.50
6	STM Bottom 77.374	*WTM Top 75.874	0.50
7	*EX. WTM Bottom 75.436	STM Top 75.136	0.30
8	EX. WTM Bottom 76.930	STM Top 76.061	0.87
9	WTM Bottom 77.830	EX. STM Top 75.501	2.33
10	WTM Bottom 76.250	STM Top 75.750	0.50
11	STM Bottom 75.426	EX. STM Top 75.017	1.41
12	STM Bottom 76.434	EX. SAN Top 73.425	3.01



- LEGEND**
- ◇ EXISTING HYDRANT
 - EXISTING STORM SEWER
 - EXISTING SANITARY SEWER
 - EXISTING WATERMAIN
 - PROPOSED STORM SEWER AND MH
 - PROPOSED AREA DRAIN
 - PROPOSED SANITARY SEWER AND MH
 - PROPOSED HYDRANT AND VALVE
 - PROPOSED VALVE AND BOX
 - PROPOSED DETECTOR ASSEMBLY
 - PROPOSED BACKFLOW PREVENTOR
 - PROPOSED WATER METER
 - PROPOSED WATERMAIN
 - PROPERTY LINE
 - EXISTING SERVICES TO BE REMOVED/DECOMMISSIONED



ROAD RESTORATION NOTE: ALL DISTURBED AREAS WITHIN THE MUNICIPAL RIGHT-OF-WAY ARE TO BE RESTORED TO EXISTING CONDITION OR BETTER, TO THE SATISFACTION OF THE CITY. UNSHRINKABLE FILL IS TO BE USED TO BACKFILL ANY SERVICING TRENCHES WITHIN THE MUNICIPAL ROADWAY UP TO 1.0m BEYOND THE EDGE OF PAVEMENT.

THE EXISTING INTERNAL PRIVATE WATERMAIN SYSTEM ON SITE SERVICES EX. RESIDENTIAL BUILDING 2080 RUSSELL ROAD AND 2100 RUSSELL ROAD. THE EXISTING SERVICE CONNECTIONS ARE TO REMAIN

LEGAL & TOPOGRAPHY
 PROVIDED BY: ANNE O'SULLIVAN, VOLLEBECK LTD.
 14 CONROUSE GATE, SUITE 500
 NAPAN, ONTARIO, K2E 7S6
 PHONE: (613) 727-0850

BENCHMARK
 NOTE: BENCHMARKS ARE ASTROMOMIC, DERIVED FROM THE EASTERLY LIMIT OF ST. LAURENT BOULEVARD, SHOWN TO BE N21°15'15"W

ELEVATION NOTE
 NOTES: ELEVATIONS SHOWN ARE GEODETIC AND ARE REFERRED TO THE CGVD25 GEODETIC DATUM.

ISSUED FOR SITE PLAN APPLICATION APPROVAL #	DATE	BY	CITY

counterpoint ENGINEERING
 COUNTERPOINT ENGINEERING INC.
 8885 LESLIE ST., SUITE 100, VILHJELM, ONTARIO L2V 1P7 Phone: 905.325.1050 Fax: 905.325.1050

J.S. YOGANATHAN
 P. ENG. (11/23)
 PROVINCE OF ONTARIO
 ENGINEER'S STAMP

APPLICANT:
STARLIGHT DEVELOPMENTS INC.
 3280 BLOOR STREET WEST, CENTRE TOWER - UNIT# 1400
 TORONTO, ONTARIO M8X 2X3
 PHONE: (416) 224-8444
 FAX: (416) 855-0192
 CONTACT: MATTHEW CELLUCCI

SITE LOCATION:
PROPOSED RESIDENTIAL DEVELOPMENT
 MULTI-UNIT RESIDENTIAL TOWER DEVELOPMENT
 1971 & 1975 ST. LAURENT BLVD., OTTAWA
 SITE PLAN FILE NO.:

SITE SERVICING PLAN

DESIGNED BY: G.D.	CHECKED BY: J.Y.	DATE: MAR. 11, 2022
DRAWING BY: G.D.	CHECKED BY: J.Y.	PROJECT NO. 21106
SCALE: 1:400mm	DRAWING NO. SW-S	