



**Butler Manufacturing**  
a division of BlueScope Buildings North America Inc.

| DRAWING INDEX             |       |
|---------------------------|-------|
| DRAWING TITLE             | PAGES |
| COVER SHEET               |       |
| CODES AND LOADS           |       |
| NOTES                     |       |
| ANCHOR ROD PLAN           |       |
| PRIMARY STRUCTURAL        |       |
| SECONDARY STRUCTURAL      |       |
| COVERING                  |       |
| SPECIAL DRAWINGS          |       |
| STANDARD ERECTION DETAILS |       |
| PLANOGRAPH DETAILS        |       |

| DRAWING RELEASE HISTORY |      |             |
|-------------------------|------|-------------|
| TYPE                    | DATE | DESCRIPTION |
|                         |      |             |
|                         |      |             |
|                         |      |             |
|                         |      |             |
|                         |      |             |
|                         |      |             |
|                         |      |             |
|                         |      |             |

### GENERAL NOTES

#### MATERIALS

3 PLATE WELDED SECTIONS  
COLD FORMED LIGHT GAGE SHAPES  
BRACE RODS  
HOT ROLLED MILL SHAPES  
HOT ROLLED ANGLES  
HOLLOW STRUCTURAL SECTION (HSS)  
CLADDING

#### ASTM DESIGNATION

A529, A572, A1011, A1018  
A653, A1011  
A572, A510  
A36, A529, A572, A588, A992  
A529, A572, A588, A992  
A500  
A653, A792

GRADE 55  
GRADE 60  
GRADE 50  
GRADE 36 OR 50  
GRADE 50  
GRADE B  
GRADE 50 OR GRADE 80

#### HIGH STRENGTH BOLT TIGHTENING REQUIREMENTS

IT IS THE RESPONSIBILITY OF THE ERECTOR TO ENSURE PROPER BOLT TIGHTNESS IN ACCORDANCE WITH APPLICABLE REGULATIONS. SEE RCSC SPECIFICATION FOR STRUCTURAL JOINTS USING HIGH STRENGTH BOLTS FOR MORE INFORMATION. SEE ERECTION GUIDE FOR BOLT TIGHTENING INSTRUCTIONS. THE FOLLOWING CRITERIA MAY BE USED TO DETERMINE THE BOLT TIGHTNESS (I.E. -SNUG TIGHT OR PRE-TENSION) UNLESS REQUIRED OTHERWISE BY LOCAL JURISDICTION OR CONTRACT.

ALL A490 BOLTS SHALL BE "PRE-TENSIONED". A325 BOLTS IN PRIMARY FRAMING AND BRACING CONNECTIONS MAY BE "SNUG-TIGHT" EXCEPT AS FOLLOWS:

PRE-TENSION A325 BOLTS IF BUILDING SUPPORTS A CRANE GREATER THAN 5 TON CAPACITY.

PRE-TENSION A325 BOLTS IF BUILDING SUPPORTS MACHINERY THAT CREATES VIBRATION, IMPACT, OR STRESS REVERSALS ON CONNECTIONS.

PRE-TENSION A325 BOLTS IF LOCATED IN HIGH SEISMIC AREAS. FOR IBC BASED CODES; HIGH SEISMIC IS DESIGN CATEGORY D, E OR F. SEE CODES AND LOADS SECTION BELOW FOR DETAILS.

PRE-TENSION ANY CONNECTION WITH DESIGNATION A325-SC. SLIP CRITICAL (SC) CONNECTIONS MUST BE FREE OF PAINT, OIL OR OTHER MATERIALS THAT REDUCE FRICTION AT CONTACT SURFACES. GALVANIZED OR LIGHTLY RUSTED SURFACES ARE ACCEPTABLE.

IN CANADA, ALL A325 AND A490 BOLTS SHALL BE "PRE-TENSIONED", EXCEPT FOR SECONDARY MEMBERS AND FLANGE BRACES.

SECONDARY MEMBERS AND FLANGE BRACE CONNECTIONS ARE ALWAYS "SNUG TIGHT", UNLESS INDICATED OTHERWISE IN ERECTION DRAWING DETAILS.

#### INSPECTION AND TESTING

SPECIAL INSPECTIONS AND TESTING REQUIRED BY AUTHORITY HAVING JURISDICTION (AHJ) DURING CONSTRUCTION AND/OR STEEL FABRICATION IS THE RESPONSIBILITY OF THE OWNER OR OWNERS AUTHORIZED AGENT. WHEN REQUIRED, THE OWNER SHALL EMPLOY A QUALITY ASSURANCE AGENCY (QAA) APPROVED BY THE AHJ. THE BUILDER IS RESPONSIBLE TO COORDINATE BETWEEN THE QAA AND BBNA FABRICATION FACILITIES. THE TYPE AND EXTENT OF SPECIAL INSPECTIONS AND TESTING MUST BE SPECIFICALLY STIPULATED IN CONTRACT DOCUMENTS OR BBNA WILL ASSUME SPECIAL INSPECTIONS AND TESTING ARE WAIVED AS PERMITTED BY THE BUILDING CODE BASED ON BBNA FACILITIES IAS ACCREDITATION.

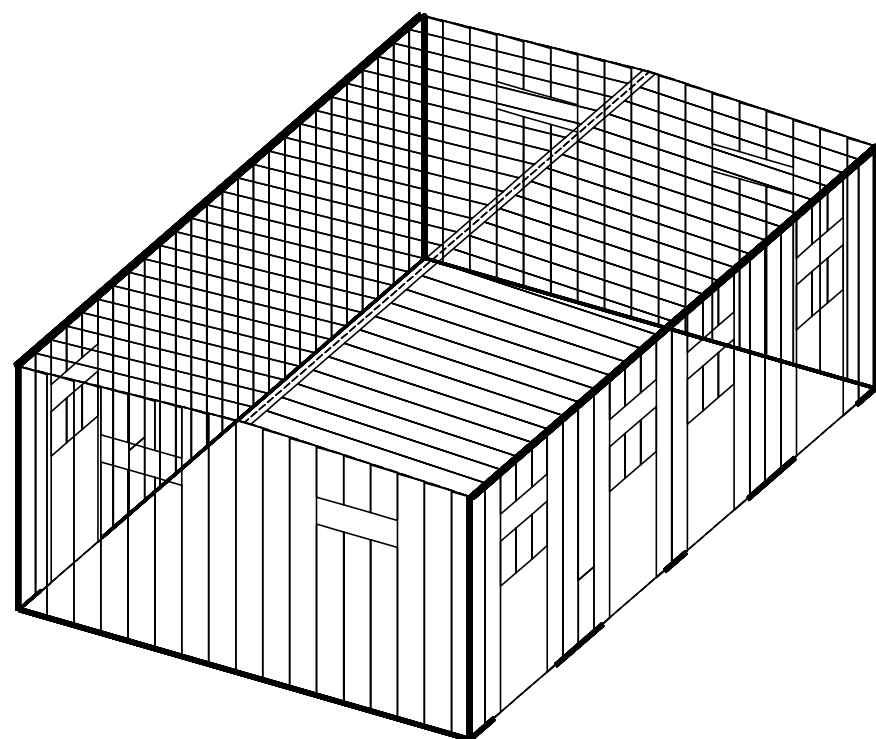
Roof Live Load 20.89 psf (Not Reducible)  
Rainfall: 0.10 inches per hour  
CONCRETE FOUNDATIONS Compressive Strength (Min.) - Fc: 3000 psi

**SNOW LOAD**  
Ground Snow: 50.14 psf, Flat Roof Snow: 40.11 psf, Rain Surcharge: 9.00 psf, Design Snow (Sloped): 49.11 psf  
Snow Exposure Category (Factor): 1 (1.00)  
Snow Importance: 1.000

**WIND LOAD**  
Wind Force: 8.77 psf, Wind Exposure: Open Terrain  
Basic Wind Pressure: 8.43 psf  
Wind Importance Factor: 1.000,  
Wind Enclosure: 2  
Note: All windows, doors, skylights and other covered openings must be designed for the specified above wind loads

**EARTHQUAKE DESIGN DATA**  
Lateral Force Resisting Systems using Equivalent Force Procedure  
Sa(0.2): 0.64, Sa(0.5): 0.31, Sa(1.0): 0.14, Sa(2.0): 0.05, Sa(2.0): 0.00, Sa(2.0): 0.00  
Seismic Snow Load: 12.28 psf  
Seismic Importance: 1.000  
Soil Profile Type: Stiff soil (D)

Conventional Steel Moment Frames  
Framing R-Factor: 1.95, Frame Seismic Factor (Cs): 0.2503, Design Base Shear = 0.2503 W  
Conventional Steel Concentric Braced Frames  
Bracing R-Factor: 1.95, Brace Seismic Factor (Cs): 0.2503, Design Base Shear = 0.2503 W



THE BUTLER MFG. ENGINEER'S SEAL APPLIES ONLY TO THE WORK PRODUCT OF BUTLER MFG. AND DESIGN AND PERFORMANCE REQUIREMENTS SPECIFIED BY BUTLER. THE BUTLER MFG. ENGINEER'S SEAL DOES NOT APPLY TO THE PERFORMANCE OR DESIGN OF ANY OTHER PRODUCT OR COMPONENT FURNISHED BY BUTLER EXCEPT TO ANY DESIGN OR PERFORMANCE REQUIREMENTS SPECIFIED BY BUTLER.

THIS DRAWING, INCLUDING THE INFORMATION HEREON, REMAINS THE PROPERTY OF BUTLER MFG. IT IS PROVIDED SOLELY FOR ERECTING THE BUILDING DESCRIBED IN THE APPLICABLE PURCHASE ORDER AND MAY BE REPRODUCED ONLY FOR THAT PURPOSE. IT SHALL NOT BE MODIFIED, REPRODUCED OR USED FOR ANY OTHER PURPOSE WITHOUT PRIOR WRITTEN APPROVAL OF BUTLER MFG.

THE GENERAL CONTRACTOR AND/OR ERECTOR IS SOLELY RESPONSIBLE FOR ACCURATE GOOD QUALITY WORKMANSHIP IN ERECTING THIS BUILDING IN ACCORDANCE WITH THIS DRAWING, DETAILS REFERENCED IN THIS DRAWING, ALL APPLICABLE BUTLER MFG. ERECTION GUIDES, AND INDUSTRY STANDARDS PERTAINING TO PROPER ERECTION, INCLUDING THE CORRECT USE OF TEMPORARY BRACING.

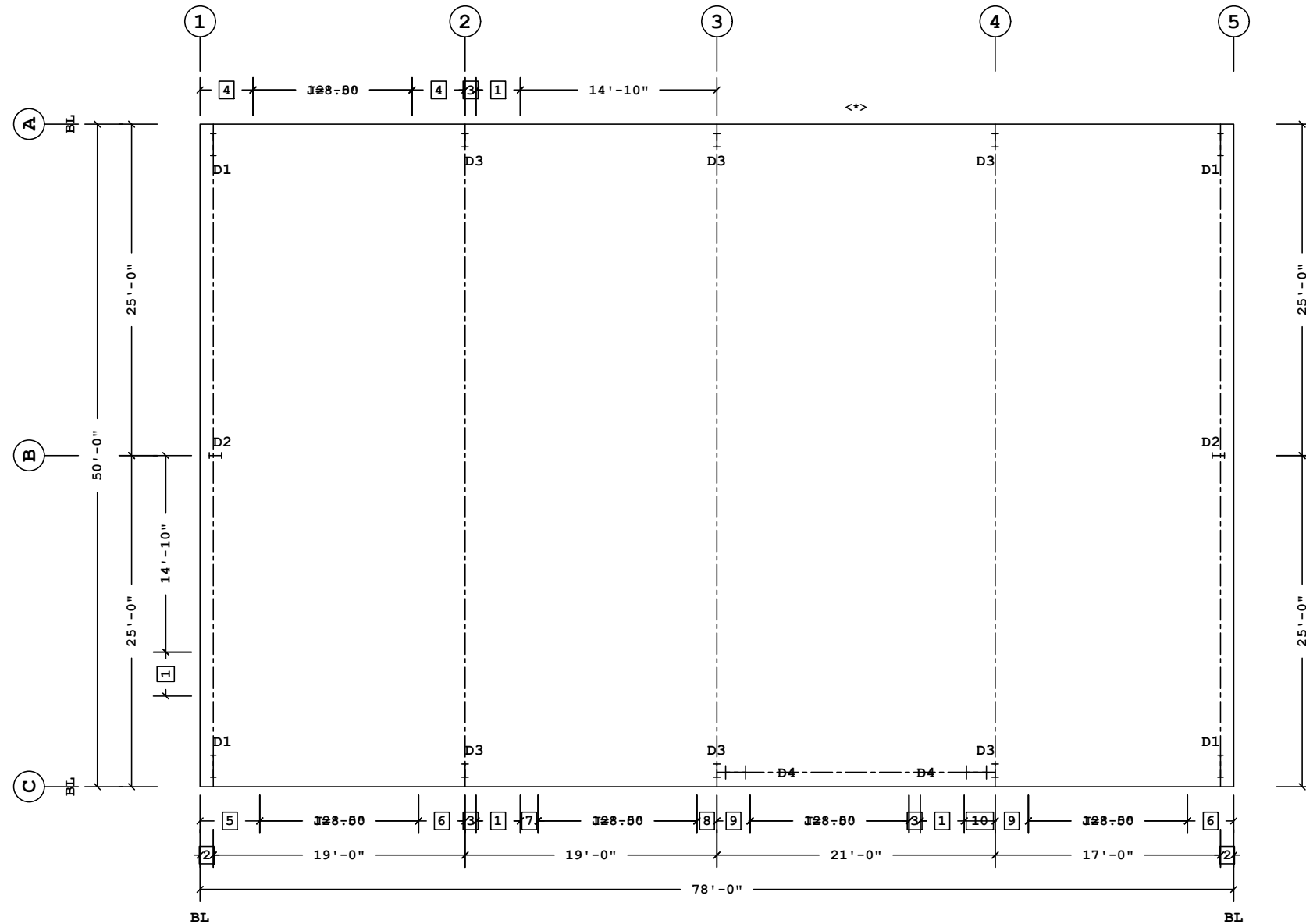
**B BUTLER MANUFACTURING**  
1540 GENESSEE ST. KANSAS CITY, MO 64102

#### COVER SHEET

BUILDER: BBS Construction (Ontario) Ltd.  
CUSTOMER:  
LOCATION: Ottawa, Ontario  
PROJECT: HERITAGE GRADE RESTORATION BLDG  
BUILDER'S PO#:



JOB #:  
DATE: 1/15/2020  
DRAWN/CHECK: /  
PAGE:



ANCHOR ROD PLAN

- 10 2'-4"
  - 9 2'-6"
  - 8 1'-6"
  - 7 1'-4"
  - 6 3'-6"
  - 5 4'-6"
  - 4 4'-0"
  - 3 10"
  - 2 1'-0"
  - 1 3'-4" J=8.50
- ☐ Dimension Key

Finished Floor Elevation = 100'-0" (Unless Noted Otherwise)

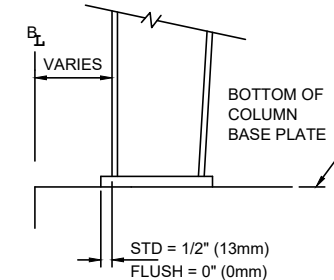
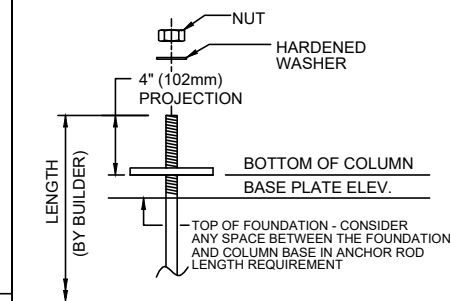
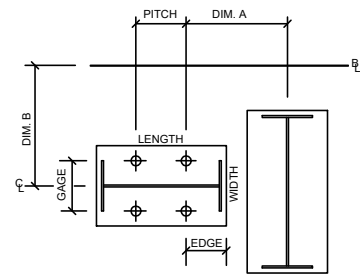
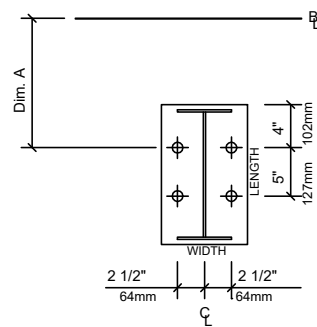
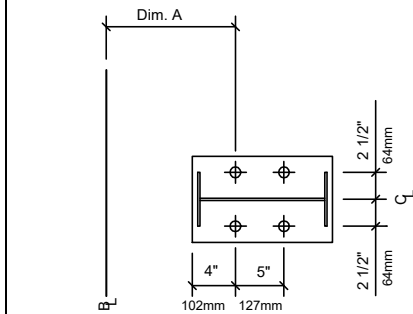
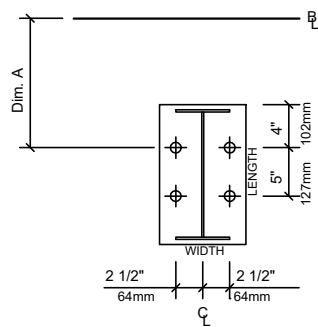
↔ THE BUILDING IS DESIGNED WITH BRACING DIAGONALS IN THE DESIGNATED BAYS. COLUMN BASE REACTIONS, BASE PLATES AND ANCHOR RODS ARE AFFECTED BY THIS BRACING AND DIAGONALS MAY NOT BE RELOCATED WITHOUT CONSULTING THE BUILDING SUPPLIERS ENGINEER.

THE BUTLER MFG. ENGINEER'S SEAL APPLIES ONLY TO THE WORK PRODUCT OF BUTLER MFG. AND DESIGN AND PERFORMANCE REQUIREMENTS SPECIFIED BY BUTLER. THE BUTLER MFG. ENGINEER'S SEAL DOES NOT APPLY TO THE PERFORMANCE OR DESIGN OF ANY OTHER PRODUCT OR COMPONENT FURNISHED BY BUTLER EXCEPT TO ANY DESIGN OR PERFORMANCE REQUIREMENTS SPECIFIED BY BUTLER.

THIS DRAWING, INCLUDING THE INFORMATION HEREON, REMAINS THE PROPERTY OF BUTLER MFG. IT IS PROVIDED SOLELY FOR ERECTING THE BUILDING DESCRIBED IN THE APPLICABLE PURCHASE ORDER AND MAY BE REPRODUCED ONLY FOR THAT PURPOSE. IT SHALL NOT BE MODIFIED, REPRODUCED OR USED FOR ANY OTHER PURPOSE WITHOUT PRIOR WRITTEN APPROVAL OF BUTLER MFG.

THE GENERAL CONTRACTOR AND/OR ERECTOR IS SOLELY RESPONSIBLE FOR ACCURATE GOOD QUALITY WORKMANSHIP IN ERECTING THIS BUILDING IN ACCORDANCE WITH THIS DRAWING, DETAILS REFERENCED IN THIS DRAWING, ALL APPLICABLE BUTLER MFG. ERECTION GUIDES, AND INDUSTRY STANDARDS PERTAINING TO PROPER ERECTION, INCLUDING THE CORRECT USE OF TEMPORARY BRACING.

|                    |       |   |              |  |  |   |  |
|--------------------|-------|---|--------------|--|--|---|--|
| <b>B</b>           |       | BUTLER MANUFACTURING<br>1540 GENESSEE ST. KANSAS CITY, MO 64102 |              | ANCHOR ROD PLAN                          |  | JOB #:  |  |
|                    |       |   |              |  |  | BUILDER: BBS Construction (Ontario) Ltd.                  |  |
| REV:               | DATE: | BY:   | DESCRIPTION: | LOCATION: Ottawa, Ontario                |  | DRAWN/CHECK: /  |  |
| DRAWING SCALE: NTS |       |   |              | PROJECT: HERITAGE GRADE RESTORATION BLDG |  | PAGE: 1   |  |
|                    |       |   |              | BUILDER'S PO#:                           |  | BUTLER<br>Butler Manufacturing<br>VPC VERSION: ADVNXT 3.7 |  |



**D1 (4) 3/4" Dia. GR36 Anchor Rods**  
**Plate W=8" L=1'-9"**  
**Dim: A=1'-0"**  
**Elev.=100'-0"**

**D2 (4) 3/4" Dia. GR36 Anchor Rods**  
**Plate W=8" L=1'-0"**  
**Dim: A=1'-0"**  
**Elev.=100'-0"**

**D3 (4) 3/4" Dia. GR36 Anchor Rods**  
**Plate W=8" L=1'-1"**  
**Dim: A=1'-0"**  
**Elev.=100'-0"**

**D4 (4) 3/4" Dia. GR36 Anchor Rods**  
**Plate W=1'-1" L=1'-7"**  
**Dim: A=11 1/2" B=1'-1"**  
**Gage=5" Pitch=5" Edge Out=4"**  
**Elev.=100'-0"**

THE 4" PROJECTION ABOVE THE BOTTOM OF THE BASE PLATE IS A SUGGESTED MINIMUM TO ENSURE ADEQUATE ANCHOR ROD LENGTH. A DIFFERENT PROJECTION MAY BE REQUIRED BY THE FOUNDATION DESIGNER.  
 THE ANCHOR ROD PROJECTION MAY NEED TO BE CUT OFF IF THERE IS INTERFERENCE WITH OTHER PARTS.

**SUGGESTED ANCHOR ROD PROJECTION**

**TYPICAL COLUMN BASE PLATE DETAIL**

- ANCHOR RODS, NUTS, HARDENED WASHERS AND ANY OTHER EMBEDDED ITEMS ARE TO BE FURNISHED BY CONTRACTOR.
- ANCHOR ROD DIAMETERS WERE DETERMINED BY ALLOWABLE SHEAR AND TENSION PER AISC SPECIFICATIONS (FY=36KSI). (ASTM F1554 GRADE 36) ANCHOR ROD LENGTH, EFFECTS OF EMBEDDED ANCHOR ROD EDGE DIMENSIONS AND METHOD OF TRANSFERRING FORCES FROM ANCHOR RODS TO FOOTINGS ARE TO BE DETERMINED BY OTHERS.
- UNLESS OTHERWISE SPECIFIED, ANCHOR RODS ARE DESIGNED AND DETAILED AS "CAST-IN-PLACE" ANCHOR RODS WITH "SNUG TIGHT" CONNECTIONS.
- FOUNDATION MUST BE LEVEL, SQUARE AND SMOOTH. ANCHOR RODS MUST BE ACCURATELY PLACED AS SHOWN ON THIS DRAWING OR STEEL WILL NOT FIT. THE BUILDER IS RESPONSIBLE FOR ACCURATE SETTING OF ANCHOR RODS PER AISC CODE OF STANDARD PRACTICE, SEC 7.5 VARIATIONS ARE SUMMARIZED BELOW:
  - CENTERS OF ANY TWO AR'S WITHIN A COLUMN BASE GROUP: +-1/8"
  - CENTERS OF ADJACENT AR GROUPS: +-1/4"
  - TOPS OF AR'S: +-1/2"
  - ACCUMULATED DIM BETWEEN CENTERS OF AR GROUPS ALONG COLUMN LINE; +-1/4" PER 100FT., NOT TO EXCEED 1" TOTAL.
  - DIM FROM CENTER OF ANY AR GROUP FROM COLUMN LINE: +-1/4"
- DESIGN LOADS AND REACTIONS ARE FURNISHED IN THE REACTIONS REPORT.

THE BUTLER MFG. ENGINEER'S SEAL APPLIES ONLY TO THE WORK PRODUCT OF BUTLER MFG. AND DESIGN AND PERFORMANCE REQUIREMENTS SPECIFIED BY BUTLER. THE BUTLER MFG. ENGINEER'S SEAL DOES NOT APPLY TO THE PERFORMANCE OR DESIGN OF ANY OTHER PRODUCT OR COMPONENT FURNISHED BY BUTLER EXCEPT TO ANY DESIGN OR PERFORMANCE REQUIREMENTS SPECIFIED BY BUTLER.

THIS DRAWING, INCLUDING THE INFORMATION HEREON, REMAINS THE PROPERTY OF BUTLER MFG. IT IS PROVIDED SOLELY FOR ERECTING THE BUILDING DESCRIBED IN THE APPLICABLE PURCHASE ORDER AND MAY BE REPRODUCED ONLY FOR THAT PURPOSE. IT SHALL NOT BE MODIFIED, REPRODUCED OR USED FOR ANY OTHER PURPOSE WITHOUT PRIOR WRITTEN APPROVAL OF BUTLER MFG.

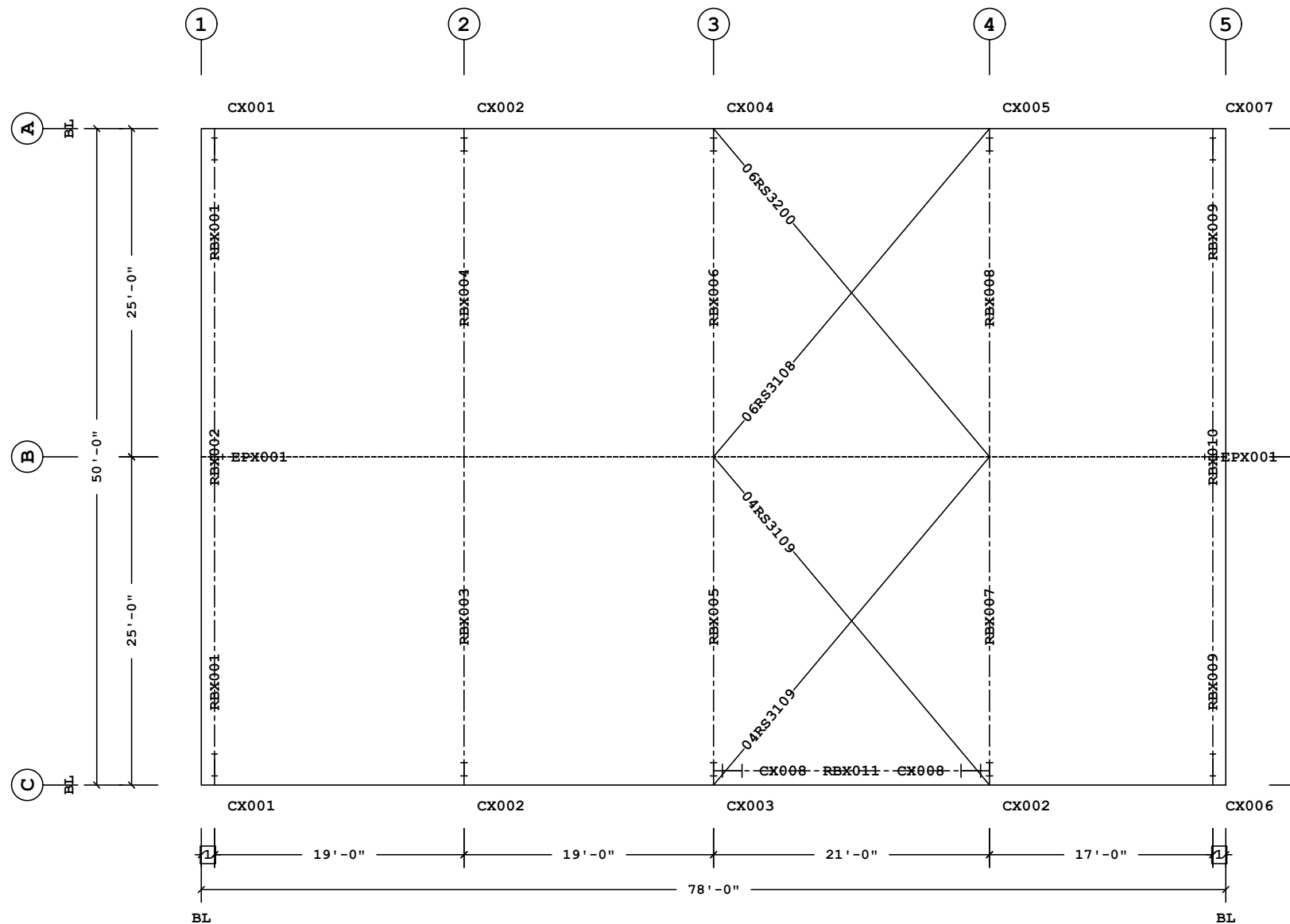
THE GENERAL CONTRACTOR AND/OR ERECTOR IS SOLELY RESPONSIBLE FOR ACCURATE GOOD QUALITY WORKMANSHIP IN ERECTING THIS BUILDING IN ACCORDANCE WITH THIS DRAWING, DETAILS REFERENCED IN THIS DRAWING, ALL APPLICABLE BUTLER MFG. ERECTION GUIDES, AND INDUSTRY STANDARDS PERTAINING TO PROPER ERECTION, INCLUDING THE CORRECT USE OF TEMPORARY BRACING.

|                           |                             |       |  |              |
|---------------------------|-----------------------------|-------|--|--------------|
| <b>B</b>                  | <b>BUTLER MANUFACTURING</b> |       | <b>1540 GENESSEE ST. KANSAS CITY, MO 64102</b> |              |
|                           | REV:                        | DATE: | BY:  | DESCRIPTION: |
| DRAWING SCALE: <b>NTS</b> |                             |       |  |              |

|  |  |
|--|--|
| <b>ANCHOR ROD PLAN - DETAILS</b>         |  |
| BUILDER: BBS Construction (Ontario) Ltd. | CUSTOMER:                                |
| LOCATION: Ottawa, Ontario                | PROJECT: HERITAGE GRADE RESTORATION BLDG |
| BUILDER'S PO#:                           |  |



JOB #:  
 DATE: 1/15/2020  
 DRAWN/CHECK: /  
 PAGE:



**Bracing Part Schedule**

| Part     | Qty | Length | Detail |
|----------|-----|--------|--------|
| 04RS3109 | 2   | 31'-9" | BR01G2 |
| 06RS3200 | 1   | 32'-0" | BR01G2 |
| 06RS3108 | 1   | 31'-8" | BR01G2 |

**PRIMARY AND ROOF BRACING PLAN**

1 1'-0"  
 Dimension Key

Shape Name = DYMECH

1. USE 1/2 X 1 1/2 A325T BOLT (49080) AND NUT (47120) W/O WASHERS. SNUG TIGHTEN BOLTS FOR ALL SECONDARY CONNECTIONS, SECONDARY CLIP CONNECTIONS, AND FLANGE BRACE CONNECTIONS, UNLESS NOTED OTHERWISE.  
 2. SLOT REINFORCEMENT PLATES NEED NOT BE LOCATED ON THE SAME SIDE OF THE WEB AS THE HILLSIDE WASHER.

THE BUTLER MFG. ENGINEER'S SEAL APPLIES ONLY TO THE WORK PRODUCT OF BUTLER MFG. AND DESIGN AND PERFORMANCE REQUIREMENTS SPECIFIED BY BUTLER. THE BUTLER MFG. ENGINEER'S SEAL DOES NOT APPLY TO THE PERFORMANCE OR DESIGN OF ANY OTHER PRODUCT OR COMPONENT FURNISHED BY BUTLER EXCEPT TO ANY DESIGN OR PERFORMANCE REQUIREMENTS SPECIFIED BY BUTLER.

THIS DRAWING, INCLUDING THE INFORMATION HEREON, REMAINS THE PROPERTY OF BUTLER MFG. IT IS PROVIDED SOLELY FOR ERECTING THE BUILDING DESCRIBED IN THE APPLICABLE PURCHASE ORDER AND MAY BE REPRODUCED ONLY FOR THAT PURPOSE. IT SHALL NOT BE MODIFIED, REPRODUCED OR USED FOR ANY OTHER PURPOSE WITHOUT PRIOR WRITTEN APPROVAL OF BUTLER MFG.

THE GENERAL CONTRACTOR AND/OR ERECTOR IS SOLELY RESPONSIBLE FOR ACCURATE GOOD QUALITY WORKMANSHIP IN ERECTING THIS BUILDING IN ACCORDANCE WITH THIS DRAWING, DETAILS REFERENCED IN THIS DRAWING, ALL APPLICABLE BUTLER MFG. ERECTION GUIDES, AND INDUSTRY STANDARDS PERTAINING TO PROPER ERECTION, INCLUDING THE CORRECT USE OF TEMPORARY BRACING.

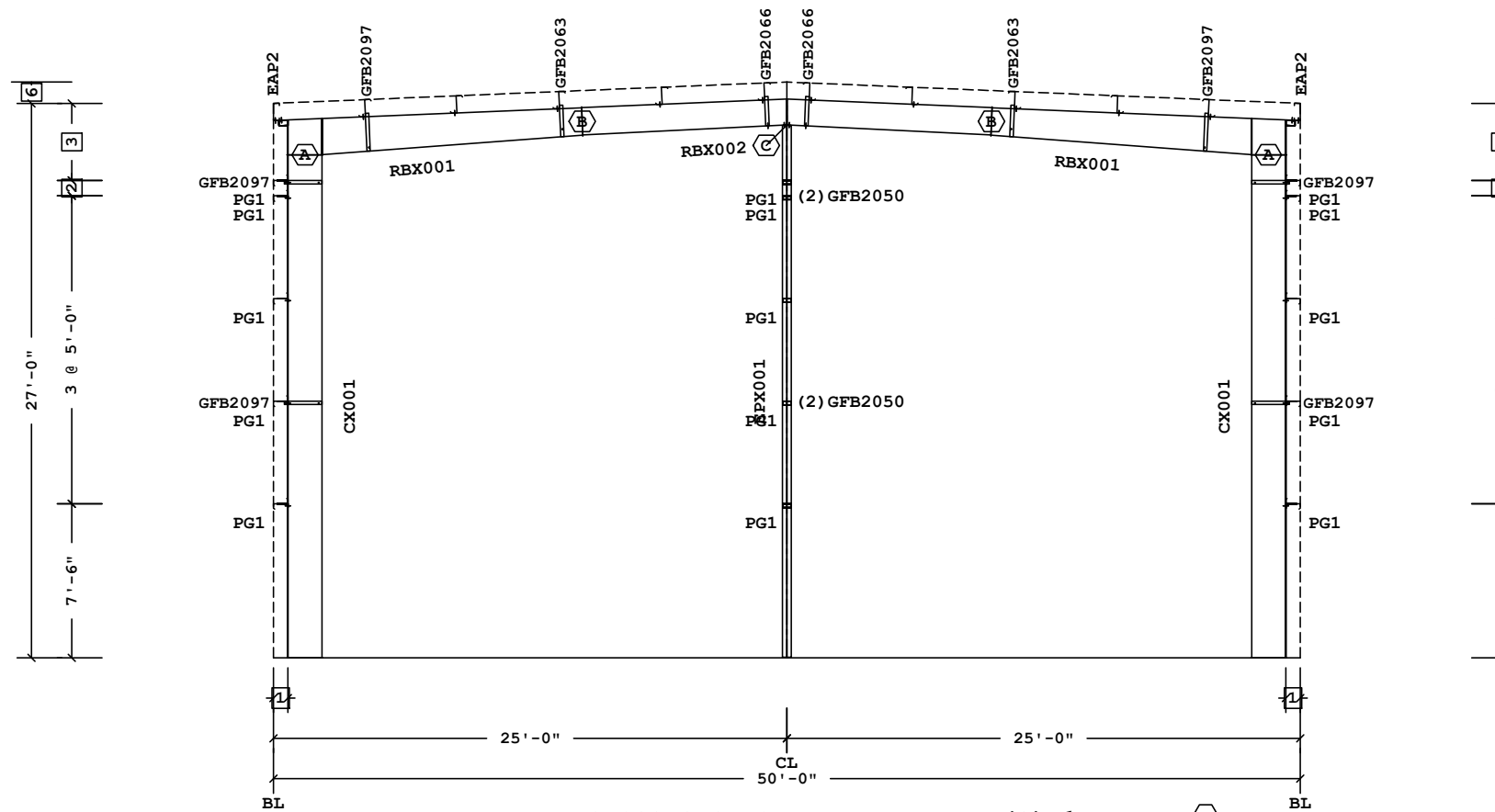
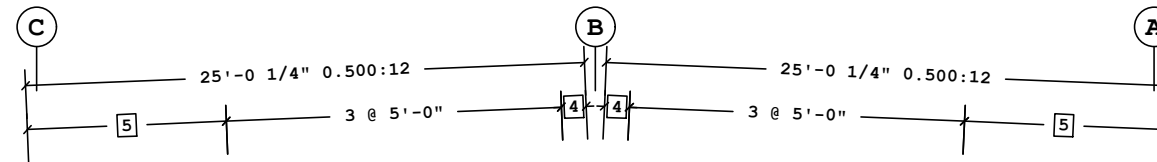
|                    |  |       |     |   |  |
|--------------------|--|-------|-----|---|--|
| <b>B</b>           | <b>BUTLER MANUFACTURING</b><br>1540 GENESSEE ST. KANSAS CITY, MO 64102 |       |     | <b>PRIMARY AND ROOF BRACING PLAN</b>                      |  |
|                    | REV:   | DATE: | BY: | DESCRIPTION:  | BUILDER: BBS Construction (Ontario) Ltd. |
|                    |  |       |     |   | CUSTOMER:                                |
|                    |  |       |     |   | LOCATION: Ottawa, Ontario                |
|                    |  |       |     |   | PROJECT: HERITAGE GRADE RESTORATION BLDG |
|                    |  |       |     |   | BUILDER'S PO#:                           |
| DRAWING SCALE: NTS |  |       |     | JOB #:  |  |
|                    |  |       |     | DATE: 1/15/2020   |  |
|                    |  |       |     | DRAWN/CHECK: /  |  |
|                    |  |       |     | PAGE:   |  |
|                    |  |       |     | BUTLER<br>Butler Manufacturing<br>VPC VERSION: ADVNXT 3.7 |  |

**Frame Member Schedule**

| Part   | Mem | Width  | Thick | WebThk. | Depth1 | Depth2 | Approx. Lgth | Approx. Weight |
|--------|-----|--------|-------|---------|--------|--------|--------------|----------------|
| CX001  | 1   | 5.0000 | .1875 | .1345   | 1'-8"  | 1'-8"  | 24'-6"       | 407#           |
| RBX001 | 2   | 5.0000 | .1875 | .1345   | 1'-9"  | 1'-4"  | 15'-0"       | 248#           |
| RBX002 | 3   | 5.0000 | .1875 | .1345   | 1'-4"  | 1'-3"  | 20'-0"       | 292#           |
|        | 4   | 5.0000 | .1875 | .1345   | 1'-3"  | 1'-4"  |              |                |
| RBX001 | 5   | 5.0000 | .1875 | .1345   | 1'-4"  | 1'-9"  | 15'-0"       | 248#           |
| CX001  | 6   | 5.0000 | .1875 | .1345   | 1'-8"  | 1'-8"  | 24'-6"       | 407#           |
| EPX001 | 7   | 5.0000 | .3750 | .1644   | 11"    | 11"    | 25'-11 1/2"  | 344#           |

**Frame Clearances**

Horiz. Clearance between members 1 (CX001) and 6 (CX001): 45'-3"  
 Vert. Clearance at member 1 (CX001): 24'-6"  
 Vert. Clearance at member 6 (CX001): 24'-6"  
 Vert. Clearance at member 7 (EPX001): 25'-11 1/2"  
 Finished Floor Elevation = 100'-0" (Unless Noted Otherwise)



**FRAME CROSS SECTION AT FRAME LINE(S) 1**

**Bolt Connection & Plate Schedule**

| Id | Qty | Grade | Bolt Dia. | Bolt Length | Plate Thick. | Rows Out | Rows In | Washer | PartNo  |
|----|-----|-------|-----------|-------------|--------------|----------|---------|--------|---------|
| A  | 8   | A325  | 3/4"      | 2 1/2"      | 3/8"         | 2        | 2       |        | 0097284 |
| B  | 4   | A325  | 3/4"      | 2 1/2"      | 3/8"         | 1        | 1       |        | 0097284 |
| C  | 4   | A325  | 1/2"      | 1 1/2"      | 3/8"         | 1        | 1       | Yes    | 49080   |

- 6 28'-0 1/2" Ridge Ht.
  - 5 2 @ 4'-5 7/16"
  - 4 1'-1 3/8"
  - 3 3'-9"
  - 2 9"
  - 1 8 1/2"
- Dimension Key

Shape Name = DYMECH Wall 4, Frame 1

1. USE 1/2 X 1 1/2 A325T BOLT (49080) AND NUT (47120) W/O WASHERS. SNUG TIGHTEN BOLTS FOR ALL SECONDARY CONNECTIONS, SECONDARY CLIP CONNECTIONS, AND FLANGE BRACE CONNECTIONS, UNLESS NOTED OTHERWISE.  
 2. SLOT REINFORCEMENT PLATES NEED NOT BE LOCATED ON THE SAME SIDE OF THE WEB AS THE HILLSIDE WASHER.

THE BUTLER MFG. ENGINEER'S SEAL APPLIES ONLY TO THE WORK PRODUCT OF BUTLER MFG. AND DESIGN AND PERFORMANCE REQUIREMENTS SPECIFIED BY BUTLER. THE BUTLER MFG. ENGINEER'S SEAL DOES NOT APPLY TO THE PERFORMANCE OR DESIGN OF ANY OTHER PRODUCT OR COMPONENT FURNISHED BY BUTLER EXCEPT TO ANY DESIGN OR PERFORMANCE REQUIREMENTS SPECIFIED BY BUTLER.

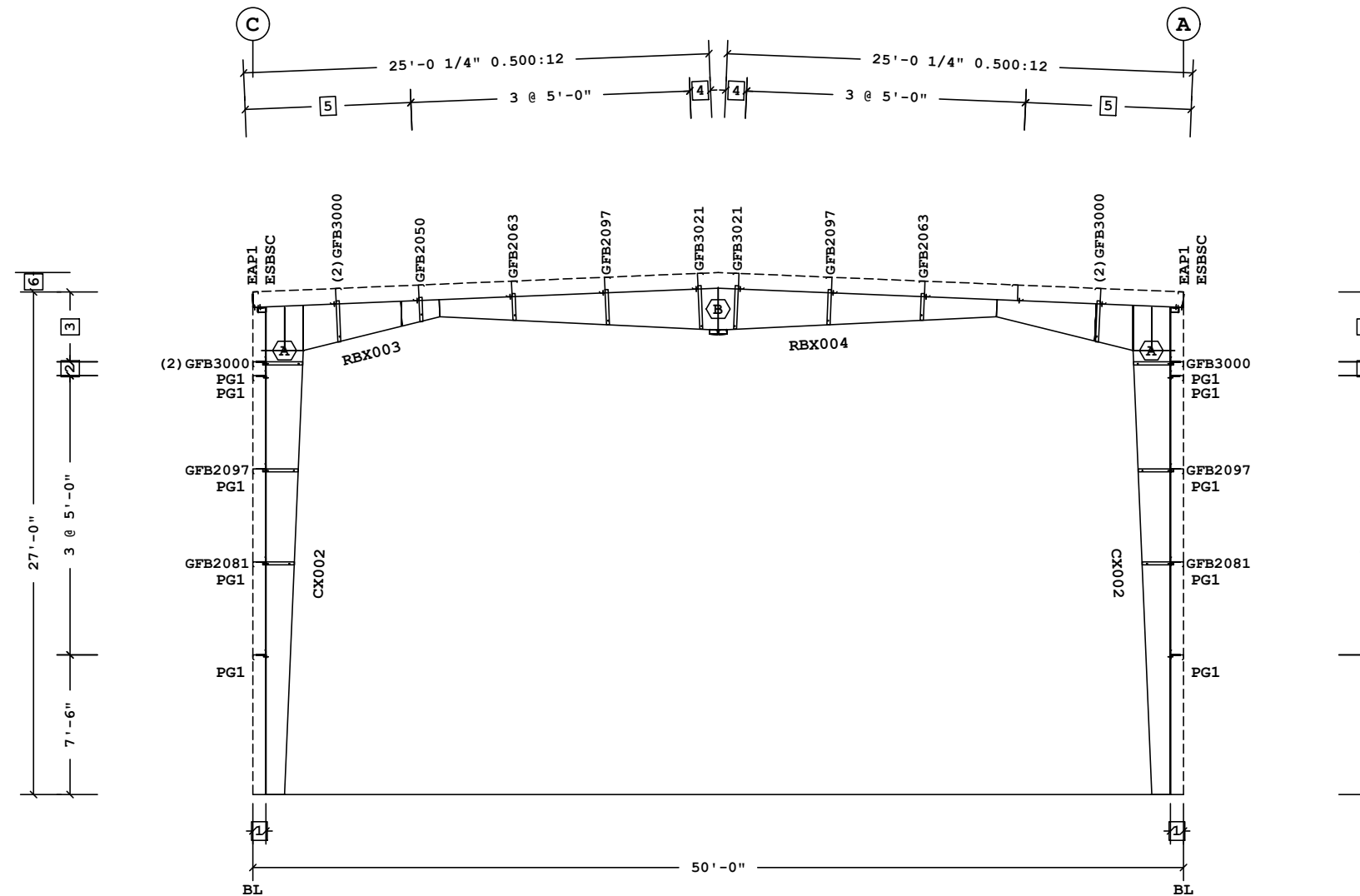
THIS DRAWING, INCLUDING THE INFORMATION HEREON, REMAINS THE PROPERTY OF BUTLER MFG. IT IS PROVIDED SOLELY FOR ERECTING THE BUILDING DESCRIBED IN THE APPLICABLE PURCHASE ORDER AND MAY BE REPRODUCED ONLY FOR THAT PURPOSE. IT SHALL NOT BE MODIFIED, REPRODUCED OR USED FOR ANY OTHER PURPOSE WITHOUT PRIOR WRITTEN APPROVAL OF BUTLER MFG.

THE GENERAL CONTRACTOR AND/OR ERECTOR IS SOLELY RESPONSIBLE FOR ACCURATE GOOD QUALITY WORKMANSHIP IN ERECTING THIS BUILDING IN ACCORDANCE WITH THIS DRAWING, DETAILS REFERENCED IN THIS DRAWING, ALL APPLICABLE BUTLER MFG. ERECTION GUIDES, AND INDUSTRY STANDARDS PERTAINING TO PROPER ERECTION, INCLUDING THE CORRECT USE OF TEMPORARY BRACING.

|                    |  |       |  |   |
|--------------------|--|-------|--|---|
| <b>B</b>           | <b>BUTLER MANUFACTURING</b><br>1540 GENESSEE ST. KANSAS CITY, MO 64102 |       | <b>DYMECH -Frame at 1</b>                |   |
|                    | REV:   | DATE: | BY:                                      | DESCRIPTION:                                    |
| DRAWING SCALE: NTS |  |       | BUILDER: BBS Construction (Ontario) Ltd. | JOB #:  |
|                    |  |       | CUSTOMER:                                | DATE: 1/15/2020                                 |
|                    |  |       | LOCATION: Ottawa, Ontario                | DRAWN/CHECK: /                                  |
|                    |  |       | PROJECT: HERITAGE GRADE RESTORATION BLDG | PAGE:   |
|                    |  |       | BUILDER'S PO#:                           | Butler Manufacturing<br>VPC VERSION: ADVNXT 3.7 |

| Part   | Mem | Width  | Thick | WebThk. | Depth1 | Depth2 | Approx. Lgth | Approx. Weight |
|--------|-----|--------|-------|---------|--------|--------|--------------|----------------|
| CX002  | 1   | 6.0000 | .5000 | .1345   | 1'-0"  | 2'-0"  | 23'-10 3/16" | 705#           |
| RBX003 | 2   | 5.0000 | .3750 | .1644   | 2'-5"  | 11"    | 25'-0"       | 654#           |
|        | 3   | 5.0000 | .3750 | .1345   | 11"    | 2'-3"  |              |                |
| RBX004 | 4   | 5.0000 | .3750 | .1345   | 2'-3"  | 11"    | 25'-0"       | 660#           |
|        | 5   | 5.0000 | .3750 | .1644   | 11"    | 2'-5"  |              |                |
| CX002  | 6   | 6.0000 | .5000 | .1345   | 1'-0"  | 2'-0"  | 23'-10 3/16" | 705#           |

**Frame Clearances**  
 Horiz. Clearance between members 1 (CX002) and 6 (CX002): 44'-7"  
 Vert. Clearance at member 1 (CX002): 23'-10 3/16"  
 Vert. Clearance at member 6 (CX002): 23'-10 3/16"  
 Finished Floor Elevation = 100'-0" (Unless Noted Otherwise)



FRAME CROSS SECTION AT FRAME LINE(S) 2

**Bolt Connection & Plate Schedule**

| Id | Qty | Grade | Bolt Dia. | Bolt Length | Plate Thick. | Rows Out | Rows In | PartNo  |
|----|-----|-------|-----------|-------------|--------------|----------|---------|---------|
| A  | 12  | A325  | 3/4"      | 2 1/2"      | 1/2"         | 4        | 2       | 0097284 |
| B  | 10  | A325  | 3/4"      | 2 1/2"      | 3/8"         | 1        | 4       | 0097284 |

- 6 28'-0 1/2" Ridge Ht.
  - 5 2 @ 4'-5 7/16"
  - 4 1'-1 3/8"
  - 3 3'-9"
  - 2 9"
  - 1 8 1/2"
- Dimension Key

Shape Name = DYMECH Wall 4, Frame 2

1. USE 1/2 X 1 1/2 A325T BOLT (49080) AND NUT (47120) W/O WASHERS. SNUG TIGHTEN BOLTS FOR ALL SECONDARY CONNECTIONS, SECONDARY CLIP CONNECTIONS, AND FLANGE BRACE CONNECTIONS, UNLESS NOTED OTHERWISE.  
 2. SLOT REINFORCEMENT PLATES NEED NOT BE LOCATED ON THE SAME SIDE OF THE WEB AS THE HILLSIDE WASHER.

THE BUTLER MFG. ENGINEER'S SEAL APPLIES ONLY TO THE WORK PRODUCT OF BUTLER MFG. AND DESIGN AND PERFORMANCE REQUIREMENTS SPECIFIED BY BUTLER. THE BUTLER MFG. ENGINEER'S SEAL DOES NOT APPLY TO THE PERFORMANCE OR DESIGN OF ANY OTHER PRODUCT OR COMPONENT FURNISHED BY BUTLER EXCEPT TO ANY DESIGN OR PERFORMANCE REQUIREMENTS SPECIFIED BY BUTLER.

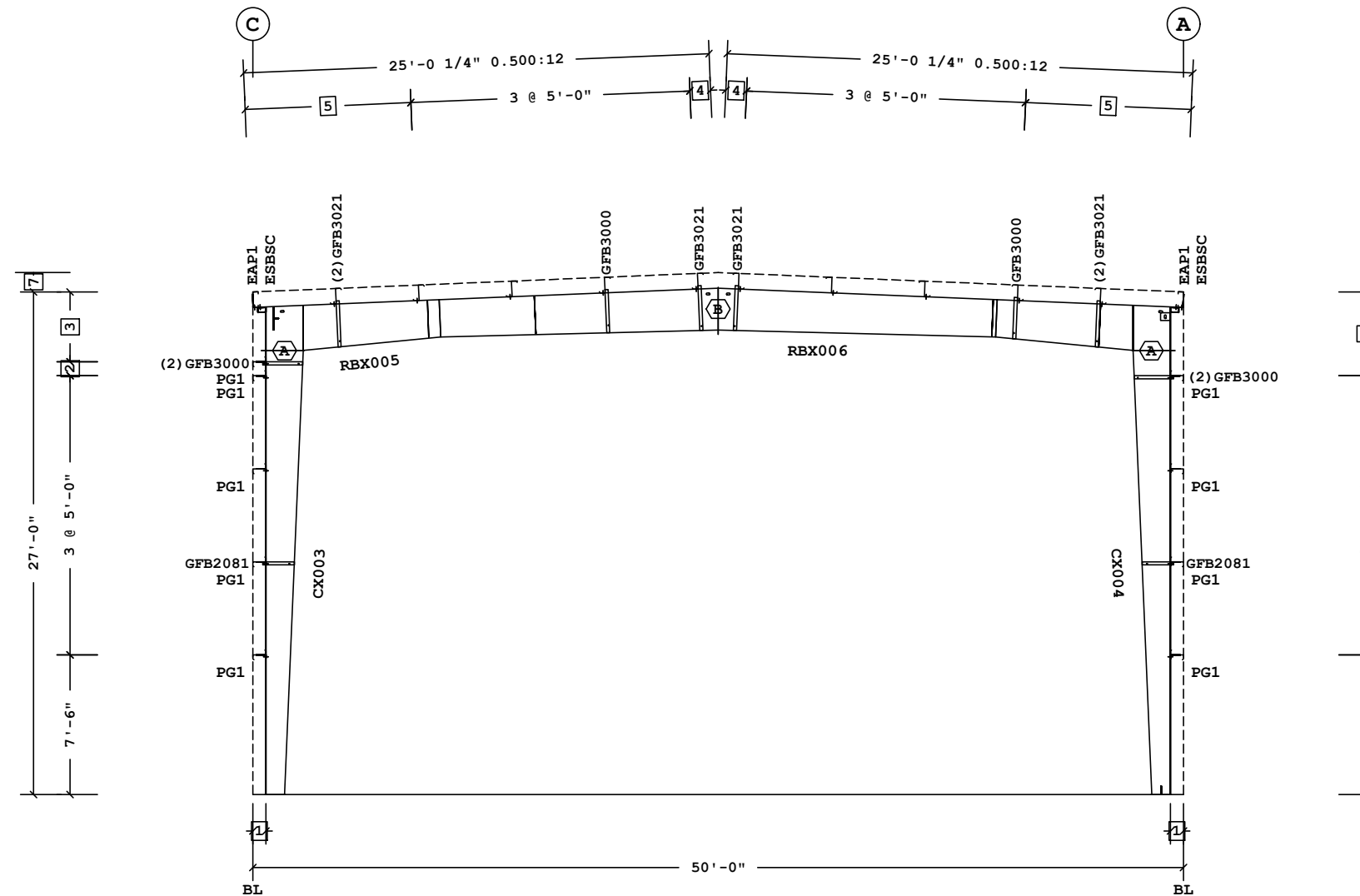
THIS DRAWING, INCLUDING THE INFORMATION HEREON, REMAINS THE PROPERTY OF BUTLER MFG. IT IS PROVIDED SOLELY FOR ERECTING THE BUILDING DESCRIBED IN THE APPLICABLE PURCHASE ORDER AND MAY BE REPRODUCED ONLY FOR THAT PURPOSE. IT SHALL NOT BE MODIFIED, REPRODUCED OR USED FOR ANY OTHER PURPOSE WITHOUT PRIOR WRITTEN APPROVAL OF BUTLER MFG.

THE GENERAL CONTRACTOR AND/OR ERECTOR IS SOLELY RESPONSIBLE FOR ACCURATE GOOD QUALITY WORKMANSHIP IN ERECTING THIS BUILDING IN ACCORDANCE WITH THIS DRAWING, DETAILS REFERENCED IN THIS DRAWING, ALL APPLICABLE BUTLER MFG. ERECTION GUIDES, AND INDUSTRY STANDARDS PERTAINING TO PROPER ERECTION, INCLUDING THE CORRECT USE OF TEMPORARY BRACING.

|   |  |       |   |              |
|---|--|-------|---|--------------|
| <b>B</b>  | <b>BUTLER MANUFACTURING</b><br>1540 GENESSEE ST. KANSAS CITY, MO 64102 |       | <b>DYMECH -Frame at 2</b>                             |              |
|   | REV:   | DATE: | BY:   | DESCRIPTION: |
| BUILDER: BBS Construction (Ontario) Ltd.        |  |       | CUSTOMER:   |              |
| LOCATION: Ottawa, Ontario                       |  |       | PROJECT: HERITAGE GRADE RESTORATION BLDG              |              |
| DRAWING SCALE: NTS                              |  |       | BUILDER'S PO#:  |              |
| DATE: 1/15/2020                                 |  |       | JOB #:  |              |
| DRAWN/CHECK: 1                                  |  |       | PAGE:   |              |
| BUTLER Manufacturing<br>VPC VERSION: ADVNXT 3.7 |  |       | a division of BlueScope Buildings North America, Inc. |              |

| Frame Member Schedule |     |        |       |         |        |        |              |                |
|-----------------------|-----|--------|-------|---------|--------|--------|--------------|----------------|
| Part                  | Mem | Width  | Thick | WebThk. | Depth1 | Depth2 | Approx. Lgth | Approx. Weight |
| CX003                 | 1   | 6.0000 | .6250 | .1345   | 1'-0"  | 2'-0"  | 23'-10 1/8"  | 824#           |
| RBX005                | 2   | 6.0000 | .3125 | .1875   | 2'-5"  | 2'-0"  | 25'-0"       | 916#           |
|                       | 3   | 6.0000 | .5000 | .1644   | 2'-0"  | 2'-3"  |              |                |
| RBX006                | 4   | 6.0000 | .5000 | .1644   | 2'-3"  | 2'-0"  | 25'-0"       | 910#           |
|                       | 5   | 6.0000 | .3125 | .1875   | 2'-0"  | 2'-5"  |              |                |
| CX004                 | 6   | 6.0000 | .6250 | .1345   | 1'-0"  | 2'-0"  | 23'-10 1/8"  | 826#           |

**Frame Clearances**  
 Horiz. Clearance between members 1 (CX003) and 6 (CX004): 44'-7"  
 Vert. Clearance at member 1 (CX003): 23'-10 1/8"  
 Vert. Clearance at member 6 (CX004): 23'-10 1/8"  
 Finished Floor Elevation = 100'-0" (Unless Noted Otherwise)



**FRAME CROSS SECTION AT FRAME LINE(S) 3**

- 7 28'-0 1/2" Ridge Ht.
  - 6 4'-6"
  - 5 2 @ 4'-5 7/16"
  - 4 1'-1 3/8"
  - 3 3'-9"
  - 2 9"
  - 1 8 1/2"
- Dimension Key

**Bolt Connection & Plate Schedule**

| Id | Qty | Grade | Bolt Dia. | Bolt Length | Plate Thick. | Rows Out | Rows In | PartNo  |
|----|-----|-------|-----------|-------------|--------------|----------|---------|---------|
| A  | 8   | A325  | 3/4"      | 2 1/2"      | 1/2"         | 2        | 2       | 0097284 |
| B  | 8   | A325  | 3/4"      | 2 1/2"      | 1/2"         | 1        | 3       | 0097284 |

Shape Name = DYMECH Wall 4, Frame 3

1. USE 1/2 X 1 1/2 A325T BOLT (49080) AND NUT (47120) W/O WASHERS. SNUG TIGHTEN BOLTS FOR ALL SECONDARY CONNECTIONS, SECONDARY CLIP CONNECTIONS, AND FLANGE BRACE CONNECTIONS, UNLESS NOTED OTHERWISE.  
 2. SLOT REINFORCEMENT PLATES NEED NOT BE LOCATED ON THE SAME SIDE OF THE WEB AS THE HILLSIDE WASHER.

THE BUTLER MFG. ENGINEER'S SEAL APPLIES ONLY TO THE WORK PRODUCT OF BUTLER MFG. AND DESIGN AND PERFORMANCE REQUIREMENTS SPECIFIED BY BUTLER. THE BUTLER MFG. ENGINEER'S SEAL DOES NOT APPLY TO THE PERFORMANCE OR DESIGN OF ANY OTHER PRODUCT OR COMPONENT FURNISHED BY BUTLER EXCEPT TO ANY DESIGN OR PERFORMANCE REQUIREMENTS SPECIFIED BY BUTLER.

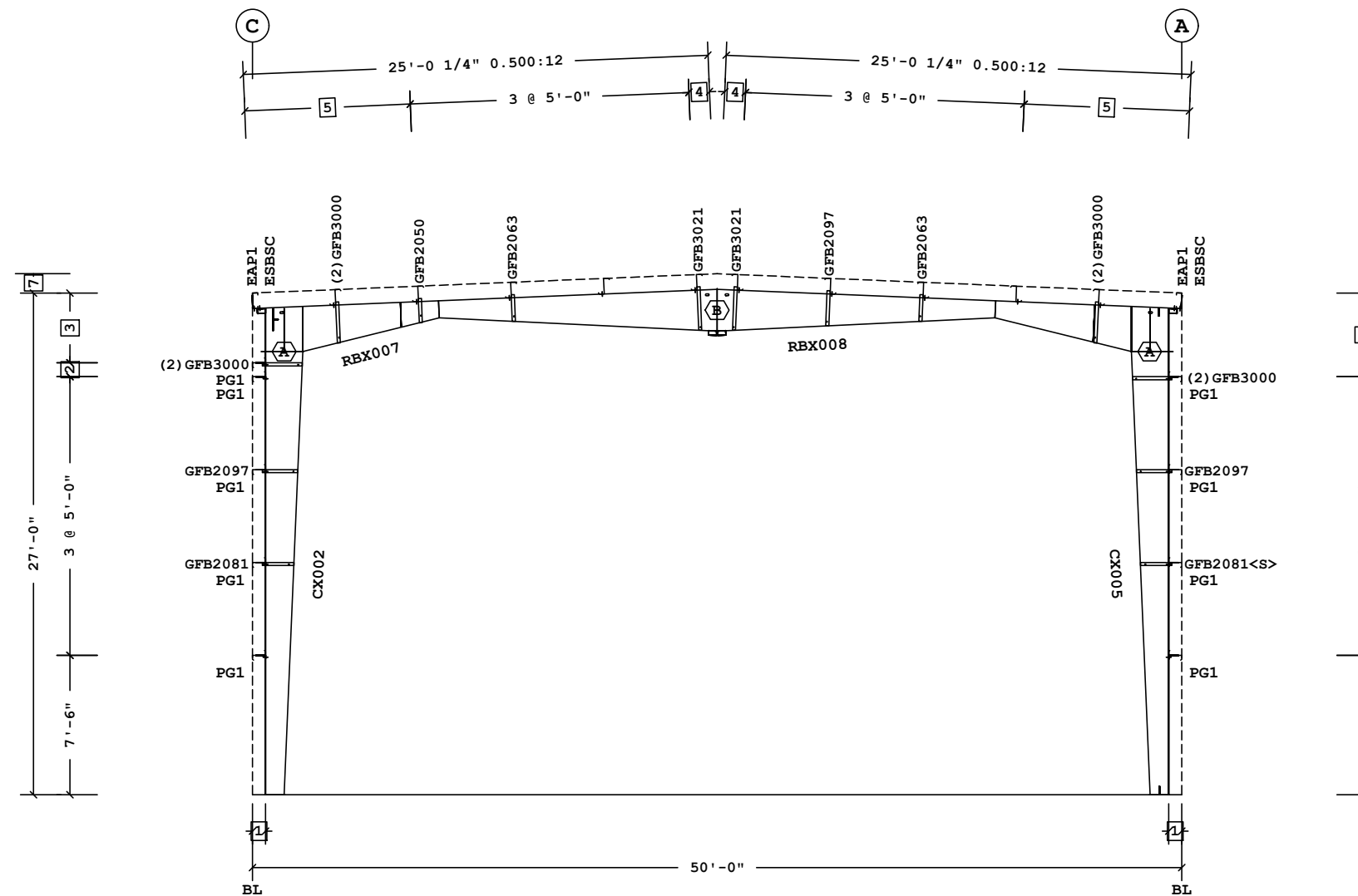
THIS DRAWING, INCLUDING THE INFORMATION HEREON, REMAINS THE PROPERTY OF BUTLER MFG. IT IS PROVIDED SOLELY FOR ERECTING THE BUILDING DESCRIBED IN THE APPLICABLE PURCHASE ORDER AND MAY BE REPRODUCED ONLY FOR THAT PURPOSE. IT SHALL NOT BE MODIFIED, REPRODUCED OR USED FOR ANY OTHER PURPOSE WITHOUT PRIOR WRITTEN APPROVAL OF BUTLER MFG.

THE GENERAL CONTRACTOR AND/OR ERECTOR IS SOLELY RESPONSIBLE FOR ACCURATE GOOD QUALITY WORKMANSHIP IN ERECTING THIS BUILDING IN ACCORDANCE WITH THIS DRAWING, DETAILS REFERENCED IN THIS DRAWING, ALL APPLICABLE BUTLER MFG. ERECTION GUIDES, AND INDUSTRY STANDARDS PERTAINING TO PROPER ERECTION, INCLUDING THE CORRECT USE OF TEMPORARY BRACING.

|                    |  |       |     |   |  |
|--------------------|--|-------|-----|---|--|
| <b>B</b>           | <b>BUTLER MANUFACTURING</b><br>1540 GENESSEE ST. KANSAS CITY, MO 64102 |       |     | <b>DYMECH -Frame at 3</b>                           |  |
|                    | REV:   | DATE: | BY: | DESCRIPTION:  | BUILDER: BBS Construction (Ontario) Ltd. |
|                    |  |       |     |   | CUSTOMER:                                |
|                    |  |       |     |   | LOCATION: Ottawa, Ontario                |
|                    |  |       |     |   | PROJECT: HERITAGE GRADE RESTORATION BLDG |
|                    |  |       |     |   | BUILDER'S PO#:                           |
| DRAWING SCALE: NTS |  |       |     | JOB #:  |  |
|                    |  |       |     | DATE: 1/15/2020                                     |  |
|                    |  |       |     | DRAWN/CHECK: 1                                      |  |
|                    |  |       |     | PAGE:   |  |
|                    |  |       |     | <br>Butler Manufacturing<br>VPC VERSION: ADVNXT 3.7 |  |

| Part   | Mem | Width  | Thick | WebThk. | Depth1 | Depth2 | Approx. Lgth | Approx. Weight |
|--------|-----|--------|-------|---------|--------|--------|--------------|----------------|
| CX002  | 1   | 6.0000 | .5000 | .1345   | 1'-0"  | 2'-0"  | 23'-10 3/16" | 705#           |
| RBX007 | 2   | 5.0000 | .3750 | .1644   | 2'-5"  | 11"    | 25'-0"       | 665#           |
|        | 3   | 5.0000 | .3750 | .1345   | 11"    | 2'-3"  |              |                |
| RBX008 | 4   | 5.0000 | .3750 | .1345   | 2'-3"  | 11"    | 25'-0"       | 663#           |
|        | 5   | 5.0000 | .3750 | .1644   | 11"    | 2'-5"  |              |                |
| CX005  | 6   | 6.0000 | .5000 | .1345   | 1'-0"  | 2'-0"  | 23'-10 3/16" | 707#           |

**Frame Clearances**  
 Horiz. Clearance between members 1 (CX002) and 6 (CX005): 44'-7"  
 Vert. Clearance at member 1 (CX002): 23'-10 3/16"  
 Vert. Clearance at member 6 (CX005): 23'-10 3/16"  
 Finished Floor Elevation = 100'-0" (Unless Noted Otherwise)



**FRAME CROSS SECTION AT FRAME LINE (S) 4**

- 7 28'-0 1/2" Ridge Ht.
- 6 4'-6"
- 5 2 @ 4'-5 7/16"
- 4 1'-1 3/8"
- 3 3'-9"
- 2 9"
- 1 8 1/2"

□ Dimension Key

**Bolt Connection & Plate Schedule**

| Id | Qty | Grade | Bolt Dia. | Bolt Length | Plate Thick. | Rows Out | Rows In | PartNo  |
|----|-----|-------|-----------|-------------|--------------|----------|---------|---------|
| A  | 12  | A325  | 3/4"      | 2 1/2"      | 1/2"         | 4        | 2       | 0097284 |
| B  | 10  | A325  | 3/4"      | 2 1/2"      | 3/8"         | 1        | 4       | 0097284 |

<S> - (2) Washers (095872) req'd at Flange Brace to Secondary.


Shape Name = DYMECH Wall 4, Frame 4

1. USE 1/2 X 1 1/2 A325T BOLT (49080) AND NUT (47120) W/O WASHERS. SNUG TIGHTEN BOLTS FOR ALL SECONDARY CONNECTIONS, SECONDARY CLIP CONNECTIONS, AND FLANGE BRACE CONNECTIONS, UNLESS NOTED OTHERWISE.  
 2. SLOT REINFORCEMENT PLATES NEED NOT BE LOCATED ON THE SAME SIDE OF THE WEB AS THE HILLSIDE WASHER.

THE BUTLER MFG. ENGINEER'S SEAL APPLIES ONLY TO THE WORK PRODUCT OF BUTLER MFG. AND DESIGN AND PERFORMANCE REQUIREMENTS SPECIFIED BY BUTLER. THE BUTLER MFG. ENGINEER'S SEAL DOES NOT APPLY TO THE PERFORMANCE OR DESIGN OF ANY OTHER PRODUCT OR COMPONENT FURNISHED BY BUTLER EXCEPT TO ANY DESIGN OR PERFORMANCE REQUIREMENTS SPECIFIED BY BUTLER.

THIS DRAWING, INCLUDING THE INFORMATION HEREON, REMAINS THE PROPERTY OF BUTLER MFG. IT IS PROVIDED SOLELY FOR ERECTING THE BUILDING DESCRIBED IN THE APPLICABLE PURCHASE ORDER AND MAY BE REPRODUCED ONLY FOR THAT PURPOSE. IT SHALL NOT BE MODIFIED, REPRODUCED OR USED FOR ANY OTHER PURPOSE WITHOUT PRIOR WRITTEN APPROVAL OF BUTLER MFG.  
 THE GENERAL CONTRACTOR AND/OR ERECTOR IS SOLELY RESPONSIBLE FOR ACCURATE GOOD QUALITY WORKMANSHIP IN ERECTING THIS BUILDING IN ACCORDANCE WITH THIS DRAWING, DETAILS REFERENCED IN THIS DRAWING, ALL APPLICABLE BUTLER MFG. ERECTION GUIDES, AND INDUSTRY STANDARDS PERTAINING TO PROPER ERECTION, INCLUDING THE CORRECT USE OF TEMPORARY BRACING.

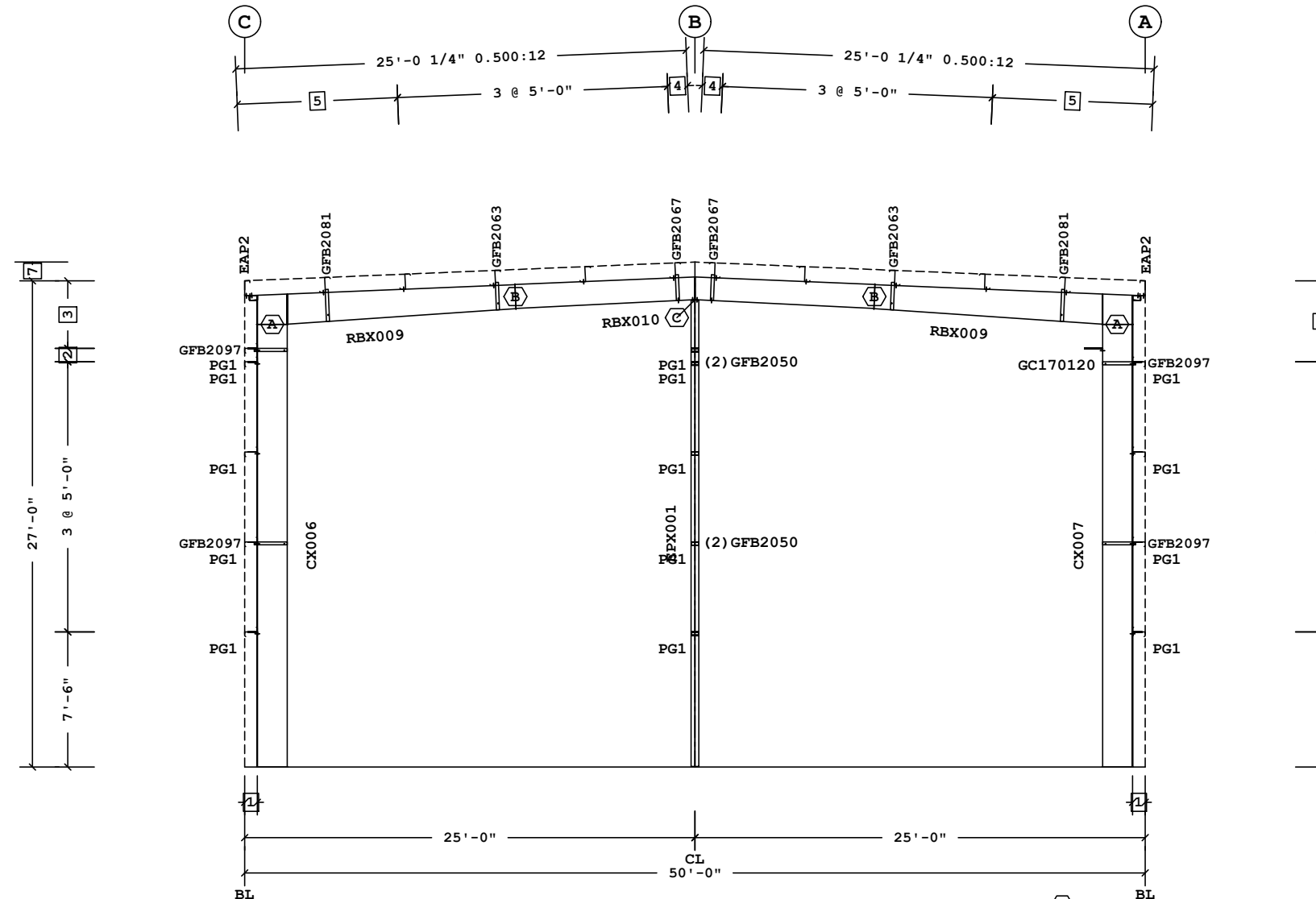
|                    |   |     |  |  |
|--------------------|---|-----|--|--|
| <b>B</b>           | <b>BUTLER MANUFACTURING</b>             |     | <b>DYMECH -Frame at 4</b>                |  |
|                    | 1540 GENESSEE ST. KANSAS CITY, MO 64102 |     | BUILDER: BBS Construction (Ontario) Ltd. |  |
| REV:               | DATE:                                   | BY: | DESCRIPTION:                             | CUSTOMER:                                |
|                    |   |     |  | LOCATION: Ottawa, Ontario                |
|                    |   |     |  | PROJECT: HERITAGE GRADE RESTORATION BLDG |
| DRAWING SCALE: NTS |   |     | BUILDER'S PO#:                           |  |

JOB #:  
 DATE: 1/15/2020  
 DRAWN/CHECK: /  
 PAGE:  
  
 Butler Manufacturing  
 VPC VERSION: ADVNXT 3.7



| Part   | Mem | Width  | Thick | WebThk. | Depth1 | Depth2 | Approx. Lgth | Approx. Weight |
|--------|-----|--------|-------|---------|--------|--------|--------------|----------------|
| CX006  | 1   | 5.0000 | .1875 | .1345   | 1'-8"  | 1'-8"  | 24'-7"       | 408#           |
| RBX009 | 2   | 5.0000 | .1875 | .1345   | 1'-8"  | 1'-4"  | 15'-0"       | 243#           |
| RBX010 | 3   | 5.0000 | .1345 | .1345   | 1'-4"  | 1'-3"  | 20'-0"       | 257#           |
|        | 4   | 5.0000 | .1345 | .1345   | 1'-3"  | 1'-4"  |              |                |
| RBX009 | 5   | 5.0000 | .1875 | .1345   | 1'-4"  | 1'-8"  | 15'-0"       | 243#           |
| CX007  | 6   | 5.0000 | .1875 | .1345   | 1'-8"  | 1'-8"  | 24'-7"       | 408#           |
| EPX001 | 7   | 5.0000 | .3750 | .1644   | 11"    | 11"    | 25'-11 1/2"  | 344#           |

**Frame Clearances**  
 Horiz. Clearance between members 1 (CX006) and 6 (CX007): 45'-3"  
 Vert. Clearance at member 1 (CX006): 24'-7"  
 Vert. Clearance at member 6 (CX007): 24'-7"  
 Vert. Clearance at member 7 (EPX001): 25'-11 1/2"  
 Finished Floor Elevation = 100'-0" (Unless Noted Otherwise)



**FRAME CROSS SECTION AT FRAME LINE(S) 5**

**Bolt Connection & Plate Schedule**

| Id | Qty | Grade | Bolt Dia. | Bolt Length | Plate Thick. | Rows Out | Rows In | Washer | PartNo  |
|----|-----|-------|-----------|-------------|--------------|----------|---------|--------|---------|
| A  | 8   | A325  | 3/4"      | 2 1/2"      | 3/8"         | 2        | 2       |        | 0097284 |
| B  | 4   | A325  | 3/4"      | 2 1/2"      | 3/8"         | 1        | 1       |        | 0097284 |
| C  | 4   | A325  | 1/2"      | 1 1/2"      | 3/8"         | 1        | 1       | Yes    | 49080   |

- 7 28'-0 1/2" Ridge Ht.
  - 6 4'-6"
  - 5 2 @ 4'-5 7/16"
  - 4 1'-1 3/8"
  - 3 3'-9"
  - 2 9"
  - 1 8 1/2"
- Dimension Key

Shape Name = DYMECH Wall 4, Frame 5

1. USE 1/2 X 1 1/2 A325T BOLT (49080) AND NUT (47120) W/O WASHERS. SNUG TIGHTEN BOLTS FOR ALL SECONDARY CONNECTIONS, SECONDARY CLIP CONNECTIONS, AND FLANGE BRACE CONNECTIONS, UNLESS NOTED OTHERWISE.  
 2. SLOT REINFORCEMENT PLATES NEED NOT BE LOCATED ON THE SAME SIDE OF THE WEB AS THE HILLSIDE WASHER.

THE BUTLER MFG. ENGINEER'S SEAL APPLIES ONLY TO THE WORK PRODUCT OF BUTLER MFG. AND DESIGN AND PERFORMANCE REQUIREMENTS SPECIFIED BY BUTLER. THE BUTLER MFG. ENGINEER'S SEAL DOES NOT APPLY TO THE PERFORMANCE OR DESIGN OF ANY OTHER PRODUCT OR COMPONENT FURNISHED BY BUTLER EXCEPT TO ANY DESIGN OR PERFORMANCE REQUIREMENTS SPECIFIED BY BUTLER.

THIS DRAWING, INCLUDING THE INFORMATION HEREON, REMAINS THE PROPERTY OF BUTLER MFG. IT IS PROVIDED SOLELY FOR ERECTING THE BUILDING DESCRIBED IN THE APPLICABLE PURCHASE ORDER AND MAY BE REPRODUCED ONLY FOR THAT PURPOSE. IT SHALL NOT BE MODIFIED, REPRODUCED OR USED FOR ANY OTHER PURPOSE WITHOUT PRIOR WRITTEN APPROVAL OF BUTLER MFG.

THE GENERAL CONTRACTOR AND/OR ERECTOR IS SOLELY RESPONSIBLE FOR ACCURATE GOOD QUALITY WORKMANSHIP IN ERECTING THIS BUILDING IN ACCORDANCE WITH THIS DRAWING, DETAILS REFERENCED IN THIS DRAWING, ALL APPLICABLE BUTLER MFG. ERECTION GUIDES, AND INDUSTRY STANDARDS PERTAINING TO PROPER ERECTION, INCLUDING THE CORRECT USE OF TEMPORARY BRACING.

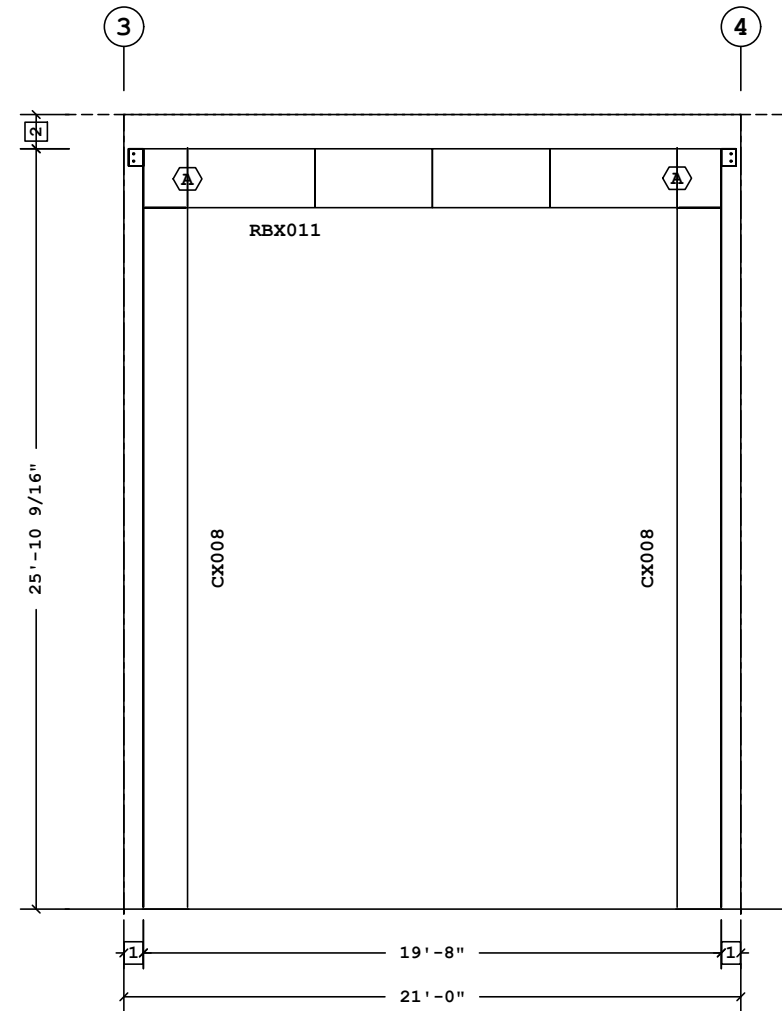
|                    |  |       |   |  |
|--------------------|--|-------|---|--|
| <b>B</b>           | <b>BUTLER MANUFACTURING</b><br>1540 GENESSEE ST. KANSAS CITY, MO 64102 |       | <b>DYMECH -Frame at 5</b>                       |  |
|                    | REV:   | DATE: | BY:   | DESCRIPTION:                             |
| DRAWING SCALE: NTS |  |       | BUILDER: BBS Construction (Ontario) Ltd.        | CUSTOMER:                                |
|                    |  |       | LOCATION: Ottawa, Ontario                       | PROJECT: HERITAGE GRADE RESTORATION BLDG |
|                    |  |       | BUILDER'S PO#:                                  | JOB #:                                   |
|                    |  |       |   |  |
|                    |  |       | Butler Manufacturing<br>VPC VERSION: ADVNXT 3.7 |  |
|                    |  |       | DATE: 1/15/2020<br>DRAWN/CHECK: /<br>PAGE: 1    |  |

**Frame Member Schedule**

| Part   | Mem | Width   | Thick | WebThk. | Depth1 | Depth2 | Approx. Lgth | Approx. Weight |
|--------|-----|---------|-------|---------|--------|--------|--------------|----------------|
| CX008  | 1   | 12.0000 | .5000 | .1345   | 1'-6"  | 1'-6"  | 25'-10 9/16" | 1366#          |
| RBX011 | 2   | 8.0000  | .2500 | .1345   | 2'-0"  | 2'-0"  | 16'-8"       | 469#           |
| CX008  | 3   | 8.0000  | .2500 | .1345   | 2'-0"  | 2'-0"  |              |                |
| CX008  | 4   | 12.0000 | .5000 | .1345   | 1'-6"  | 1'-6"  | 25'-10 9/16" | 1366#          |

**Frame Clearances**

Horiz. Clearance between members 1 (CX008) and 4 (CX008): 16'-8"  
 Vert. Clearance at member 1 (CX008): 23'-10 1/16"  
 Vert. Clearance at member 4 (CX008): 23'-10 1/16"  
 Finished Floor Elevation = 100'-0" (Unless Noted Otherwise)



**PORTAL FRAME ELEVATION ALONG C**

**Bolt Connection & Plate Schedule**

| Id | Qty | Grade | Bolt Dia. | Bolt Length | Plate Thick. | Rows Out | Rows In | PartNo  |
|----|-----|-------|-----------|-------------|--------------|----------|---------|---------|
| A  | 12  | A325  | 3/4"      | 2 1/2"      | 1/2"         | 3        | 3       | 0097284 |

2 1'-2"  
 1 8"  
 □ Dimension Key

Shape Name = DYMECH Wall 4, Frame 3

1. USE 1/2 X 1 1/2 A325T BOLT (49080) AND NUT (47120) W/O WASHERS. SNUG TIGHTEN BOLTS FOR ALL SECONDARY CONNECTIONS, SECONDARY CLIP CONNECTIONS, AND FLANGE BRACE CONNECTIONS, UNLESS NOTED OTHERWISE.  
 2. SLOT REINFORCEMENT PLATES NEED NOT BE LOCATED ON THE SAME SIDE OF THE WEB AS THE HILLSIDE WASHER.

THE BUTLER MFG. ENGINEER'S SEAL APPLIES ONLY TO THE WORK PRODUCT OF BUTLER MFG. AND DESIGN AND PERFORMANCE REQUIREMENTS SPECIFIED BY BUTLER. THE BUTLER MFG. ENGINEER'S SEAL DOES NOT APPLY TO THE PERFORMANCE OR DESIGN OF ANY OTHER PRODUCT OR COMPONENT FURNISHED BY BUTLER EXCEPT TO ANY DESIGN OR PERFORMANCE REQUIREMENTS SPECIFIED BY BUTLER.

THIS DRAWING, INCLUDING THE INFORMATION HEREON, REMAINS THE PROPERTY OF BUTLER MFG. IT IS PROVIDED SOLELY FOR ERECTING THE BUILDING DESCRIBED IN THE APPLICABLE PURCHASE ORDER AND MAY BE REPRODUCED ONLY FOR THAT PURPOSE. IT SHALL NOT BE MODIFIED, REPRODUCED OR USED FOR ANY OTHER PURPOSE WITHOUT PRIOR WRITTEN APPROVAL OF BUTLER MFG.

THE GENERAL CONTRACTOR AND/OR ERECTOR IS SOLELY RESPONSIBLE FOR ACCURATE GOOD QUALITY WORKMANSHIP IN ERECTING THIS BUILDING IN ACCORDANCE WITH THIS DRAWING, DETAILS REFERENCED IN THIS DRAWING, ALL APPLICABLE BUTLER MFG. ERECTION GUIDES, AND INDUSTRY STANDARDS PERTAINING TO PROPER ERECTION, INCLUDING THE CORRECT USE OF TEMPORARY BRACING.

|  |  |       |     |   |  |
|--|--|-------|-----|---|--|
| <b>B</b>                                 | <b>BUTLER MANUFACTURING</b><br>1540 GENESSEE ST. KANSAS CITY, MO 64102 |       |     | <b>DYMECH -Portal Frame at C 3-4</b>                  |  |
|  | REV:   | DATE: | BY: | DESCRIPTION:  | BUILDER: BBS Construction (Ontario) Ltd. |
| DRAWING SCALE: NTS                       |  |       |     | LOCATION: Ottawa, Ontario                             | JOB #:                                   |
| PROJECT: HERITAGE GRADE RESTORATION BLDG |  |       |     | DATE: 1/15/2020                                       |  |
| DRAWING CHECK: /                         |  |       |     | DRAWN/CHECK: /  |  |
| BUILDER'S PO#:                           |  |       |     | PAGE:   |  |
| BUTLER                                   |  |       |     | Butler Manufacturing                                  |  |
| VPC VERSION: ADVNXT 3.7                  |  |       |     | a division of BlueScope Buildings North America, Inc. |  |

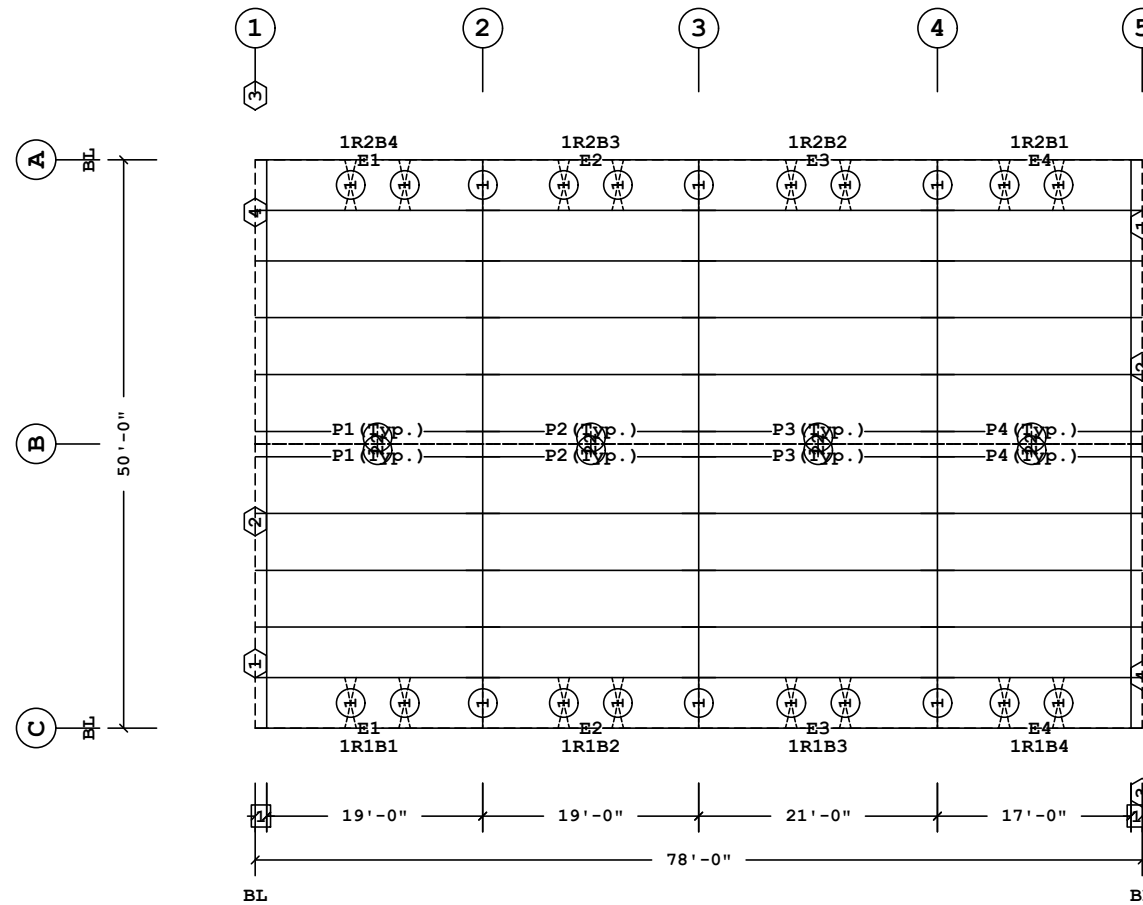
**Secondary Part Schedule**

| Mark | Part            | Thick. | Depth | Lap       | Detail               |
|------|-----------------|--------|-------|-----------|----------------------|
| E1   | 10E1911414ADB30 | 0.0790 | 10"   |           | RS12PF,RS12PE,RS12PJ |
| E2   | 10E1811414DDB30 | 0.0790 | 10"   |           | RS12PE,RS12PJ        |
| E3   | 10E2011414DDB30 | 0.0790 | 10"   |           | RS12PE,RS12PJ        |
| E4   | 10E1711414ADB30 | 0.0790 | 10"   |           | RS12PF,RS12PE,RS12PJ |
| P1   | 10Z2105412A2B3  | 0.0980 | 10"   | 1'-4 1/2" | RS02T1,RS01U1        |
| P2   | 10Z211141322B2  | 0.0880 | 10"   | 1'-4 1/2" | RS01U1               |
| P3   | 10Z231141422B2  | 0.0790 | 10"   | 1'-4 1/2" | RS01U1               |
| P4   | 10Z1905412A2A3  | 0.0980 | 10"   | 1'-4 1/2" | RS02T1,RS01U1        |

**Secondary Bracing Schedule**

| Id | Qty | Mark No            | Spacing    |
|----|-----|--------------------|------------|
| 1  | 38  | PBA0409            | 4'-5 7/16" |
| 2  | 8   | CPBRA010602 (Typ.) | 1'-1 3/8"  |

See SED:  
BR09K5, BR09JG, BR09RY, BR09RZ, BR09JK  
BR09K2



**ROOF SECONDARY PLAN**

**Part Mark Key**

|   |             |
|---|-------------|
| 1 | 002SGA11043 |
| 2 | 002SGA13067 |
| 3 | 001SGA11043 |
| 4 | 001SGA13067 |

1 1'-0"  
Dimension Key

Shape Name = DYMECH

1. UNLESS NOTED, USE 1/2 X 1 1/2 A325T BOLT (49080) AND NUT (47120) W/O WASHERS. SNUG TIGHTEN BOLTS FOR ALL SECONDARY CONNECTIONS.  
2. FLANGE BRACES ARE AN INTEGRAL PART OF THE STABILITY OF THE STRUCTURAL SYSTEM AND MUST BE PROPERLY INSTALLED PRIOR TO ERECTION OF WALL AND ROOF SHEETS.  
3. REMOVAL OR ALTERATION OF ANY COMPONENT IS PROHIBITED.

THE BUTLER MFG. ENGINEER'S SEAL APPLIES ONLY TO THE WORK PRODUCT OF BUTLER MFG. AND DESIGN AND PERFORMANCE REQUIREMENTS SPECIFIED BY BUTLER. THE BUTLER MFG. ENGINEER'S SEAL DOES NOT APPLY TO THE PERFORMANCE OR DESIGN OF ANY OTHER PRODUCT OR COMPONENT FURNISHED BY BUTLER EXCEPT TO ANY DESIGN OR PERFORMANCE REQUIREMENTS SPECIFIED BY BUTLER.

THIS DRAWING, INCLUDING THE INFORMATION HEREON, REMAINS THE PROPERTY OF BUTLER MFG. IT IS PROVIDED SOLELY FOR ERECTING THE BUILDING DESCRIBED IN THE APPLICABLE PURCHASE ORDER AND MAY BE REPRODUCED ONLY FOR THAT PURPOSE. IT SHALL NOT BE MODIFIED, REPRODUCED OR USED FOR ANY OTHER PURPOSE WITHOUT PRIOR WRITTEN APPROVAL OF BUTLER MFG.

THE GENERAL CONTRACTOR AND/OR ERECTOR IS SOLELY RESPONSIBLE FOR ACCURATE GOOD QUALITY WORKMANSHIP IN ERECTING THIS BUILDING IN ACCORDANCE WITH THIS DRAWING, DETAILS REFERENCED IN THIS DRAWING, ALL APPLICABLE BUTLER MFG. ERECTION GUIDES, AND INDUSTRY STANDARDS PERTAINING TO PROPER ERECTION, INCLUDING THE CORRECT USE OF TEMPORARY BRACING.

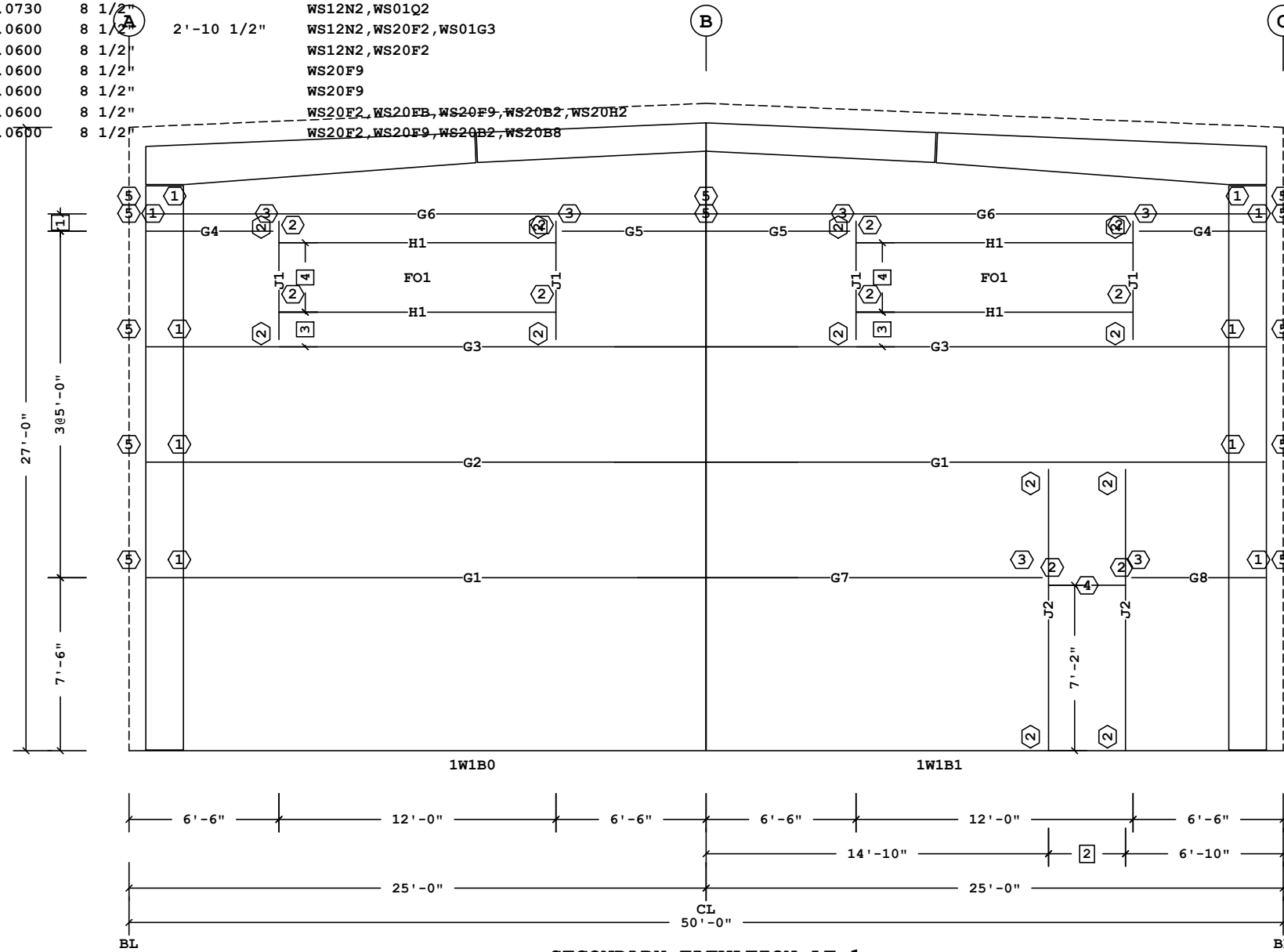
|  |  |       |                            |              |
|--|--|-------|----------------------------|--------------|
| <b>B</b>                                 | <b>BUTLER MANUFACTURING</b><br>1540 GENESSEE ST. KANSAS CITY, MO 64102 |       | <b>ROOF SECONDARY PLAN</b> |              |
|  | REV:   | DATE: | BY:                        | DESCRIPTION: |
| BUILDER: BBS Construction (Ontario) Ltd. |  |       | JOB #:                     |              |
| CUSTOMER:                                |  |       | DATE: 1/15/2020            |              |
| LOCATION: Ottawa, Ontario                |  |       | DRAWN/CHECK: /             |              |
| PROJECT: HERITAGE GRADE RESTORATION BLDG |  |       | PAGE:                      |              |
| DRAWING SCALE: NTS                       |  |       | BUILDER'S PO#:             |              |
| BUTLER Manufacturing                     |  |       | VPC VERSION: ADVNXT 3.7    |              |

Secondary Part Schedule

| Mark | Part             | Thick. | Depth  | Lap        | Detail                                 |
|------|------------------|--------|--------|------------|--|
| G1   | 08Z2802414Q502   | 0.0790 | 8 1/2" | 3'-10 1/2" | WS12N2, WS01G3                         |
| G2   | 08Z2802415Q502   | 0.0730 | 8 1/2" | 3'-10 1/2" | WS12N2, WS01G3                         |
| G3   | 08Z2802417Q502   | 0.0600 | 8 1/2" | 3'-10 1/2" | WS12N2, WS01G3                         |
| G4   | 08Z0505417GQ02   | 0.0600 | 8 1/2" |            | WS12N2, WS20F2                         |
| G5   | 08Z0602417DG02   | 0.0600 | 8 1/2" |            | WS12N2, WS20F2, WS01Q2                 |
| G6   | 08Z2402415DQ02   | 0.0730 | 8 1/2" |            | WS12N2, WS01Q2                         |
| G7   | 00108ZS170641702 | 0.0600 | 8 1/2" | 2'-10 1/2" | WS12N2, WS20F2, WS01G3                 |
| G8   | 00208ZS050941702 | 0.0600 | 8 1/2" |            | WS12N2, WS20F2                         |
| H1   | 00108JS1200017   | 0.0600 | 8 1/2" |            | WS20F9                                 |
| H2   | 00308JS0304017   | 0.0600 | 8 1/2" |            | WS20F9                                 |
| J1   | 00208JS0501417   | 0.0600 | 8 1/2" |            | WS20F2, WS20EB, WS20F9, WS20B2, WS20BZ |
| J2   | 00408JS1202217   | 0.0600 | 8 1/2" |            | WS20F2, WS20F9, WS20B2, WS20B8         |

Framed Opening Locations

| Id  | Width  | Height | Sill Ht. | Frame | To     | Dimen. | Description  |
|-----|--------|--------|----------|-------|--------|--------|--|
| FO1 | 12'-0" | 3'-0"  | 19'-0"   | BL    | Jamb-L | 6'-6"  | Framed Opening #2 - WINDOW 12X3, Sill 19/0/0, Height 3/0/0 |
| FO1 | 12'-0" | 3'-0"  | 19'-0"   | 1     | Jamb-L | 6'-6"  | Framed Opening #2 - WINDOW 12X3, Sill 19/0/0, Height 3/0/0 |



- 4 3'-0"      5 GFAP1054
- 3 1'-6"      4 H2
- 2 3'-4"      3 JTG1
- 1 9"         2 PG1
- 1 VCC07003090
- Dimension Key      ◯ Part Mark Key

Shape Name = DYMECH, Wall = 1

- UNLESS NOTED, USE 1/2 X 1 1/2 A325T BOLT (49080) AND NUT (47120) W/O WASHERS. SNUG TIGHTEN BOLTS FOR ALL SECONDARY CONNECTIONS.
- FLANGE BRACES ARE AN INTEGRAL PART OF THE STABILITY OF THE STRUCTURAL SYSTEM AND MUST BE PROPERLY INSTALLED PRIOR TO ERECTION OF WALL AND ROOF SHEETS.
- REMOVAL OR ALTERATION OF ANY COMPONENT IS PROHIBITED.

THE BUTLER MFG. ENGINEER'S SEAL APPLIES ONLY TO THE WORK PRODUCT OF BUTLER MFG. AND DESIGN AND PERFORMANCE REQUIREMENTS SPECIFIED BY BUTLER. THE BUTLER MFG. ENGINEER'S SEAL DOES NOT APPLY TO THE PERFORMANCE OR DESIGN OF ANY OTHER PRODUCT OR COMPONENT FURNISHED BY BUTLER EXCEPT TO ANY DESIGN OR PERFORMANCE REQUIREMENTS SPECIFIED BY BUTLER.

THIS DRAWING, INCLUDING THE INFORMATION HEREON, REMAINS THE PROPERTY OF BUTLER MFG. IT IS PROVIDED SOLELY FOR ERECTING THE BUILDING DESCRIBED IN THE APPLICABLE PURCHASE ORDER AND MAY BE REPRODUCED ONLY FOR THAT PURPOSE. IT SHALL NOT BE MODIFIED, REPRODUCED OR USED FOR ANY OTHER PURPOSE WITHOUT PRIOR WRITTEN APPROVAL OF BUTLER MFG.

THE GENERAL CONTRACTOR AND/OR ERECTOR IS SOLELY RESPONSIBLE FOR ACCURATE GOOD QUALITY WORKMANSHIP IN ERECTING THIS BUILDING IN ACCORDANCE WITH THIS DRAWING, DETAILS REFERENCED IN THIS DRAWING, ALL APPLICABLE BUTLER MFG. ERECTION GUIDES, AND INDUSTRY STANDARDS PERTAINING TO PROPER ERECTION, INCLUDING THE CORRECT USE OF TEMPORARY BRACING.

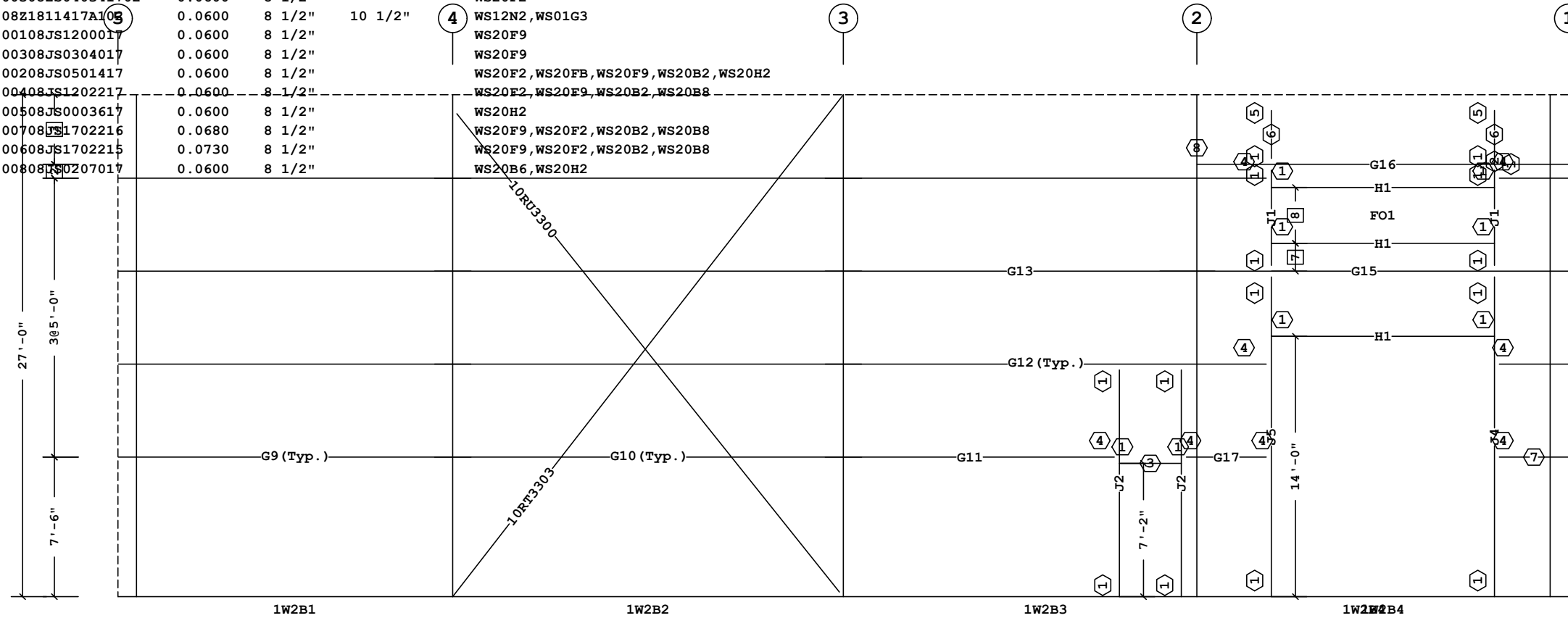
|                    |   |     |   |  |                 |
|--------------------|---|-----|---|--|-----------------|
| <b>B</b>           | <b>BUTLER MANUFACTURING</b>             |     |   | <b>DYMECH -Secondary at 1</b>            |                 |
|                    | 1540 GENESSEE ST. KANSAS CITY, MO 64102 |     |   | BUILDER: BBS Construction (Ontario) Ltd. |                 |
| REV:               | DATE:                                   | BY: | DESCRIPTION:                                    | CUSTOMER:                                | JOB #:          |
|                    |   |     |   | LOCATION: Ottawa, Ontario                | DATE: 1/15/2020 |
|                    |   |     |   | PROJECT: HERITAGE GRADE RESTORATION BLDG | DRAWN/CHECK: /  |
|                    |   |     |   | BUILDER'S PO#:                           | PAGE:           |
| DRAWING SCALE: NTS |   |     | Butler Manufacturing<br>VPC VERSION: ADVNXT 3.7 |  |                 |

Secondary Part Schedule

| Mark | Part             | Thick. | Depth  | Lap        | Detail                                 |
|------|------------------|--------|--------|------------|--|
| G10  | 08Z22114171102   | 0.0600 | 8 1/2" | 10 1/2"    | WS01G3                                 |
| G11  | 00308ZS150641702 | 0.0600 | 8 1/2" | 10 1/2"    | WS20F2, WS01G3                         |
| G12  | 00408ZS230841702 | 0.0600 | 8 1/2" | 10 1/2"    | WS20F2, WS01G3                         |
| G13  | 08Z20114171102   | 0.0600 | 8 1/2" | 10 1/2"    | WS01G3                                 |
| G14  | 08Z0308417AG02   | 0.0600 | 8 1/2" |            | WS12N2, WS20F2                         |
| G15  | 08Z2111416A302   | 0.0680 | 8 1/2" | 1'-10 1/2" | WS12N2, WS01G3                         |
| G16  | 08Z1911417AD02   | 0.0600 | 8 1/2" |            | WS12N2, WS01Q2                         |
| G17  | 00508ZS040341702 | 0.0600 | 8 1/2" |            | WS20F2                                 |
| G9   | 08Z1811417A103   | 0.0600 | 8 1/2" | 10 1/2"    | WS12N2, WS01G3                         |
| H1   | 00108JS1200017   | 0.0600 | 8 1/2" |            | WS20F9                                 |
| H2   | 00308JS0304017   | 0.0600 | 8 1/2" |            | WS20F9                                 |
| J1   | 00208JS0501417   | 0.0600 | 8 1/2" |            | WS20F2, WS20FB, WS20F9, WS20B2, WS20H2 |
| J2   | 00408JS1202217   | 0.0600 | 8 1/2" |            | WS20F2, WS20F9, WS20B2, WS20B8         |
| J3   | 00508JS0003617   | 0.0600 | 8 1/2" |            | WS20H2                                 |
| J4   | 00708JS1702216   | 0.0680 | 8 1/2" |            | WS20F9, WS20F2, WS20B2, WS20B8         |
| J5   | 00608JS1702215   | 0.0730 | 8 1/2" |            | WS20F9, WS20F2, WS20B2, WS20B8         |
| J6   | 00808JS0207017   | 0.0600 | 8 1/2" |            | WS20B6, WS20H2                         |

Framed Opening Locations

| Id  | Width  | Height | Sill Ht. | Frame | To     | Dimen. | Description  |
|-----|--------|--------|----------|-------|--------|--------|--|
| FO1 | 12'-0" | 3'-0"  | 19'-0"   | 4     | Jamb-L | 4'-0"  | Framed Opening #2 - WINDOW 12X3, Sill 19/0/0, Height 3/0/0 |



Bracing Part Schedule

| Part     | Qty | Length | Detail         |
|----------|-----|--------|----------------|
| 10RT3303 | 1   | 33'-3" | BR02K1, BR01G2 |
| 10RU3300 | 1   | 33'-0" | BR02K1         |

SECONDARY ELEVATION AT A

|   |       |   |            |
|---|-------|---|------------|
| 8 | 3'-0" | 8 | GFAP0084   |
| 7 | 1'-6" | 7 | G14 (Typ.) |
| 6 | 4'-0" | 6 | J6         |
| 5 | 10"   | 5 | TSC1       |
| 4 | 3'-4" | 4 | JTG1       |
| 3 | 3'-9" | 3 | H2         |
| 2 | 9"    | 2 | J3         |
| 1 | 1'-0" | 1 | PG1        |

Dimension Key

Part Mark Key

Shape Name = DYMECH, Wall = 2

1. UNLESS NOTED, USE 1/2 X 1 1/2 A325T BOLT (49080) AND NUT (47120) W/O WASHERS. SNUG TIGHTEN BOLTS FOR ALL SECONDARY CONNECTIONS.  
 2. FLANGE BRACES ARE AN INTEGRAL PART OF THE STABILITY OF THE STRUCTURAL SYSTEM AND MUST BE PROPERLY INSTALLED PRIOR TO ERECTION OF WALL AND ROOF SHEETS.  
 3. REMOVAL OR ALTERATION OF ANY COMPONENT IS PROHIBITED.

THE BUTLER MFG. ENGINEER'S SEAL APPLIES ONLY TO THE WORK PRODUCT OF BUTLER MFG. AND DESIGN AND PERFORMANCE REQUIREMENTS SPECIFIED BY BUTLER. THE BUTLER MFG. ENGINEER'S SEAL DOES NOT APPLY TO THE PERFORMANCE OR DESIGN OF ANY OTHER PRODUCT OR COMPONENT FURNISHED BY BUTLER EXCEPT TO ANY DESIGN OR PERFORMANCE REQUIREMENTS SPECIFIED BY BUTLER.

THIS DRAWING, INCLUDING THE INFORMATION HEREON, REMAINS THE PROPERTY OF BUTLER MFG. IT IS PROVIDED SOLELY FOR ERECTING THE BUILDING DESCRIBED IN THE APPLICABLE PURCHASE ORDER AND MAY BE REPRODUCED ONLY FOR THAT PURPOSE. IT SHALL NOT BE MODIFIED, REPRODUCED OR USED FOR ANY OTHER PURPOSE WITHOUT PRIOR WRITTEN APPROVAL OF BUTLER MFG.

THE GENERAL CONTRACTOR AND/OR ERECTOR IS SOLELY RESPONSIBLE FOR ACCURATE GOOD QUALITY WORKMANSHIP IN ERECTING THIS BUILDING IN ACCORDANCE WITH THIS DRAWING, DETAILS REFERENCED IN THIS DRAWING, ALL APPLICABLE BUTLER MFG. ERECTION GUIDES, AND INDUSTRY STANDARDS PERTAINING TO PROPER ERECTION, INCLUDING THE CORRECT USE OF TEMPORARY BRACING.

|                    |  |       |     |  |  |
|--------------------|--|-------|-----|--|--|
| <b>B</b>           | <b>BUTLER MANUFACTURING</b><br>1540 GENESSEE ST. KANSAS CITY, MO 64102 |       |     | <b>DYMECH -Secondary at A</b>            |  |
|                    | REV:   | DATE: | BY: | DESCRIPTION:                             | BUILDER: BBS Construction (Ontario) Ltd. |
| DRAWING SCALE: NTS |  |       |     | LOCATION: Ottawa, Ontario                | JOB #:                                   |
|                    |  |       |     | PROJECT: HERITAGE GRADE RESTORATION BLDG | DATE: 1/15/2020                          |
|                    |  |       |     | BUILDER'S PO#:                           | DRAWN/CHECK: /                           |
|                    |  |       |     |  | PAGE:                                    |

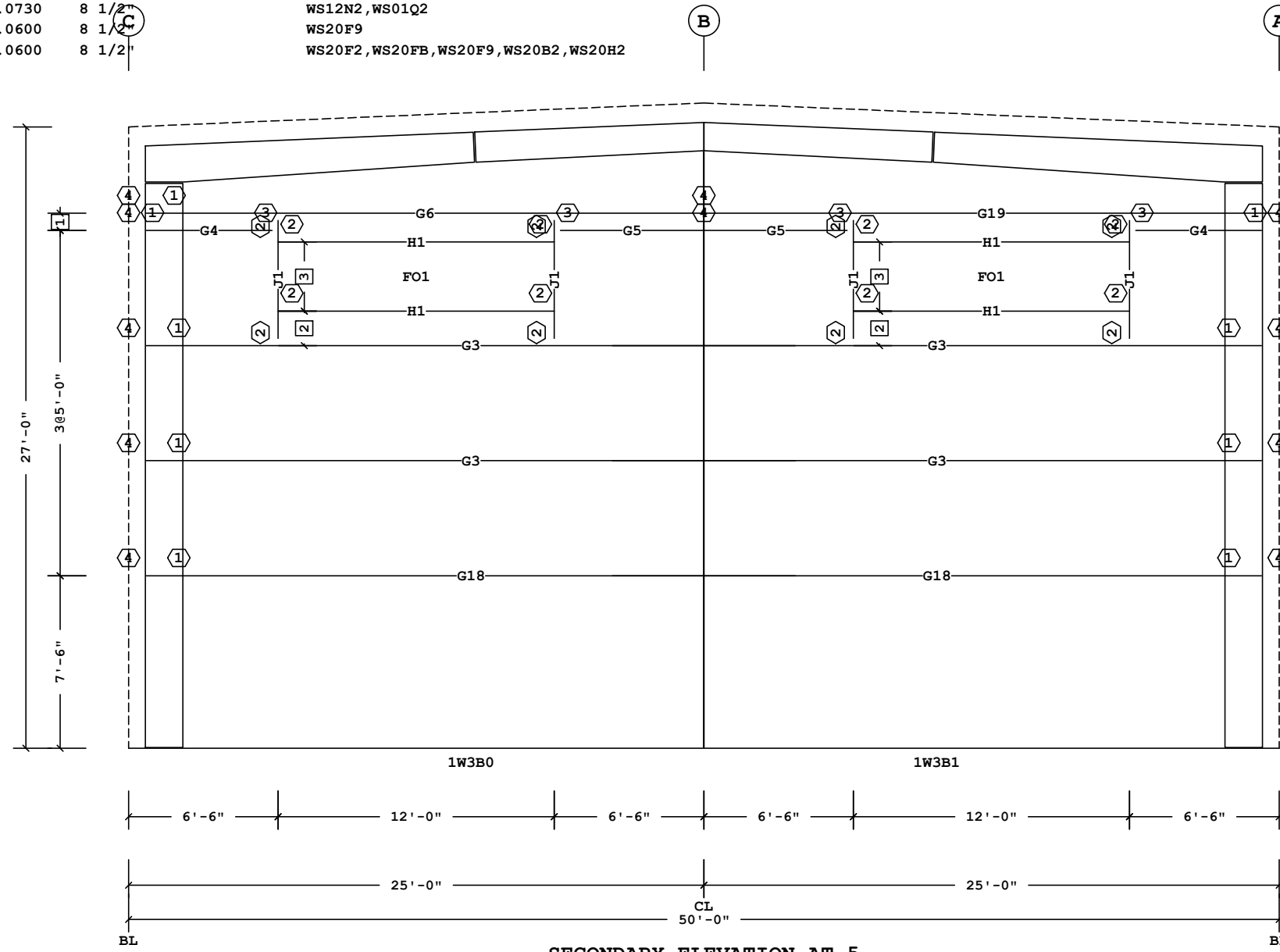


Secondary Part Schedule

| Mark | Part           | Thick. | Depth  | Lap        | Detail                                 |
|------|----------------|--------|--------|------------|--|
| G18  | 08Z2802416Q502 | 0.0680 | 8 1/2" | 3'-10 1/2" | WS12N2, WS01G3                         |
| G19  | 08Z2411415DD02 | 0.0730 | 8 1/2" |            | WS12N2, WS01Q2                         |
| G3   | 08Z2802417Q502 | 0.0600 | 8 1/2" | 3'-10 1/2" | WS12N2, WS01G3                         |
| G4   | 08Z0505417GQ02 | 0.0600 | 8 1/2" |            | WS12N2, WS20F2                         |
| G5   | 08Z0602417DG02 | 0.0600 | 8 1/2" |            | WS12N2, WS20F2, WS01Q2                 |
| G6   | 08Z2402415DQ02 | 0.0730 | 8 1/2" |            | WS12N2, WS01Q2                         |
| H1   | 00108JS1200017 | 0.0600 | 8 1/2" |            | WS20F9                                 |
| J1   | 00208JS0501417 | 0.0600 | 8 1/2" |            | WS20F2, WS20FB, WS20F9, WS20B2, WS20H2 |

Framed Opening Locations

| Id  | Width  | Height | Sill Ht. | Frame | To     | Dimen. | Description  |
|-----|--------|--------|----------|-------|--------|--------|--|
| FO1 | 12'-0" | 3'-0"  | 19'-0"   | BL    | Jamb-L | 6'-6"  | Framed Opening #2 - WINDOW 12X3, Sill 19/0/0, Height 3/0/0 |
| FO1 | 12'-0" | 3'-0"  | 19'-0"   | 1     | Jamb-L | 6'-6"  | Framed Opening #2 - WINDOW 12X3, Sill 19/0/0, Height 3/0/0 |



|   |       |   |             |
|---|-------|---|-------------|
| 3 | 3'-0" | 4 | GFAP1054    |
| 2 | 1'-6" | 3 | JTG1        |
| 1 | 9"    | 2 | PG1         |
|   |       | 1 | VCC07003090 |

□ Dimension Key      ◯ Part Mark Key

Shape Name = DYMECH , Wall = 3

- UNLESS NOTED, USE 1/2 X 1 1/2 A325T BOLT (49080) AND NUT (47120) W/O WASHERS. SNUG TIGHTEN BOLTS FOR ALL SECONDARY CONNECTIONS.
- FLANGE BRACES ARE AN INTEGRAL PART OF THE STABILITY OF THE STRUCTURAL SYSTEM AND MUST BE PROPERLY INSTALLED PRIOR TO ERECTION OF WALL AND ROOF SHEETS.
- REMOVAL OR ALTERATION OF ANY COMPONENT IS PROHIBITED.

THE BUTLER MFG. ENGINEER'S SEAL APPLIES ONLY TO THE WORK PRODUCT OF BUTLER MFG. AND DESIGN AND PERFORMANCE REQUIREMENTS SPECIFIED BY BUTLER. THE BUTLER MFG. ENGINEER'S SEAL DOES NOT APPLY TO THE PERFORMANCE OR DESIGN OF ANY OTHER PRODUCT OR COMPONENT FURNISHED BY BUTLER EXCEPT TO ANY DESIGN OR PERFORMANCE REQUIREMENTS SPECIFIED BY BUTLER.

THIS DRAWING, INCLUDING THE INFORMATION HEREON, REMAINS THE PROPERTY OF BUTLER MFG. IT IS PROVIDED SOLELY FOR ERECTING THE BUILDING DESCRIBED IN THE APPLICABLE PURCHASE ORDER AND MAY BE REPRODUCED ONLY FOR THAT PURPOSE. IT SHALL NOT BE MODIFIED, REPRODUCED OR USED FOR ANY OTHER PURPOSE WITHOUT PRIOR WRITTEN APPROVAL OF BUTLER MFG.

THE GENERAL CONTRACTOR AND/OR ERECTOR IS SOLELY RESPONSIBLE FOR ACCURATE GOOD QUALITY WORKMANSHIP IN ERECTING THIS BUILDING IN ACCORDANCE WITH THIS DRAWING, DETAILS REFERENCED IN THIS DRAWING, ALL APPLICABLE BUTLER MFG. ERECTION GUIDES, AND INDUSTRY STANDARDS PERTAINING TO PROPER ERECTION, INCLUDING THE CORRECT USE OF TEMPORARY BRACING.

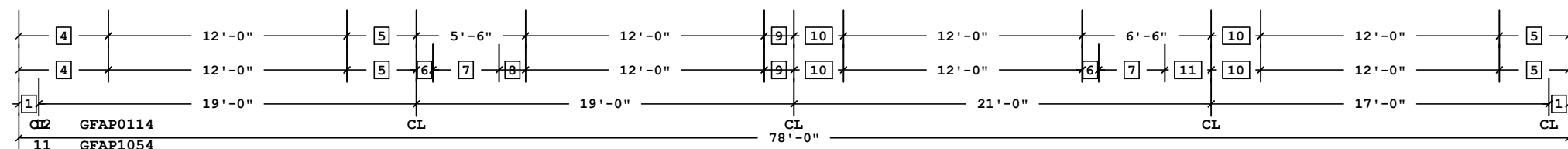
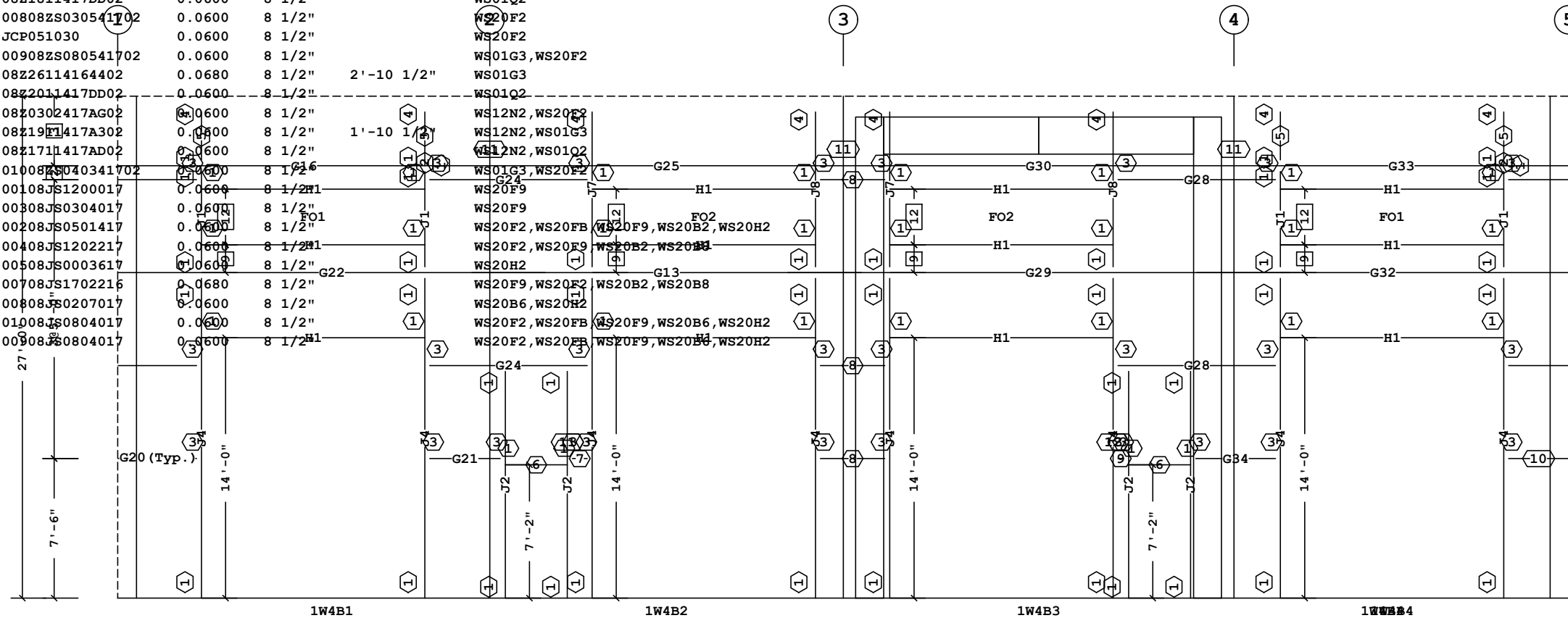
|                    |  |       |     |   |  |
|--------------------|--|-------|-----|---|--|
| <b>B</b>           | <b>BUTLER MANUFACTURING</b><br>1540 GENESSEE ST. KANSAS CITY, MO 64102 |       |     | <b>DYMECH -Secondary at 5</b>                             |  |
|                    | REV:   | DATE: | BY: | DESCRIPTION:  | BUILDER: BBS Construction (Ontario) Ltd. |
|                    |  |       |     |   | CUSTOMER:                                |
|                    |  |       |     |   | LOCATION: Ottawa, Ontario                |
|                    |  |       |     |   | PROJECT: HERITAGE GRADE RESTORATION BLDG |
|                    |  |       |     |   | BUILDER'S PO#:                           |
| DRAWING SCALE: NTS |  |       |     | JOB #:  |  |
|                    |  |       |     | DATE: 1/15/2020   |  |
|                    |  |       |     | DRAWN/CHECK: /  |  |
|                    |  |       |     | PAGE:   |  |
|                    |  |       |     | BUTLER<br>Butler Manufacturing<br>VPC VERSION: ADVNXT 3.7 |  |

Secondary Part Schedule

| Mark | Part             | Thick. | Depth  | Lap        | Detail                                 |
|------|------------------|--------|--------|------------|--|
| G13  | 08Z20114171102   | 0.0600 | 8 1/2" | 10 1/2"    | WS01G3                                 |
| G16  | 08Z1911417AD02   | 0.0600 | 8 1/2" |            | WS12N2, WS01Q2                         |
| G20  | 08Z0402417AG02   | 0.0600 | 8 1/2" |            | WS12N2, WS20F2                         |
| G21  | 00608ZS030941702 | 0.0600 | 8 1/2" |            | WS12N2, WS20F2                         |
| G22  | 08Z2211415A402   | 0.0730 | 8 1/2" | 2'-10 1/2" | WS12N2, WS01G3                         |
| G23  | JCP051090        | 0.0600 | 8 1/2" |            | WS20F2                                 |
| G24  | 00708ZS080541702 | 0.0600 | 8 1/2" |            | WS01G3, WS20F2                         |
| G25  | 08Z1811417DD02   | 0.0600 | 8 1/2" |            | WS01Q2                                 |
| G26  | 00808ZS030541702 | 0.0600 | 8 1/2" |            | WS20F2                                 |
| G27  | JCP051030        | 0.0600 | 8 1/2" |            | WS20F2                                 |
| G28  | 00908ZS080541702 | 0.0600 | 8 1/2" |            | WS01G3, WS20F2                         |
| G29  | 08Z26114164402   | 0.0680 | 8 1/2" | 2'-10 1/2" | WS01G3                                 |
| G30  | 08Z2011417DD02   | 0.0600 | 8 1/2" |            | WS01Q2                                 |
| G31  | 08Z0302417AG02   | 0.0600 | 8 1/2" |            | WS12N2, WS20F2                         |
| G32  | 08Z1911417A302   | 0.0600 | 8 1/2" | 1'-10 1/2" | WS12N2, WS01G3                         |
| G33  | 08Z1711417AD02   | 0.0600 | 8 1/2" |            | WS12N2, WS01Q2                         |
| G34  | 01008ZS040341702 | 0.0600 | 8 1/2" |            | WS01G3, WS20F2                         |
| H1   | 00108JS1200017   | 0.0600 | 8 1/2" |            | WS20F9                                 |
| H2   | 00308JS0304017   | 0.0600 | 8 1/2" |            | WS20F9                                 |
| J1   | 00208JS0501417   | 0.0600 | 8 1/2" |            | WS20F2, WS20FB, WS20B2, WS20H2         |
| J2   | 00408JS1202217   | 0.0600 | 8 1/2" |            | WS20F2, WS20F9, WS20B2, WS20H2         |
| J3   | 00508JS0003617   | 0.0600 | 8 1/2" |            | WS20H2                                 |
| J4   | 00708JS1702216   | 0.0680 | 8 1/2" |            | WS20F9, WS20F2, WS20B2, WS20B8         |
| J6   | 00808JS0207017   | 0.0600 | 8 1/2" |            | WS20B6, WS20H2                         |
| J7   | 01008JS0804017   | 0.0600 | 8 1/2" |            | WS20F2, WS20FB, WS20F9, WS20B6, WS20H2 |
| J8   | 00908JS0804017   | 0.0600 | 8 1/2" |            | WS20F2, WS20FB, WS20F9, WS20B6, WS20H2 |

Framed Opening Locations

| Id  | Width  | Height | Sill Ht. | Frame | To     | Dimen. | Description  |
|-----|--------|--------|----------|-------|--------|--------|--|
| FO1 | 12'-0" | 3'-0"  | 19'-0"   | 1     | Jamb-L | 3'-6"  | Framed Opening #2 - WINDOW 12X3, Sill 19/0/0, Height 3/0/0 |
| FO1 | 12'-0" | 3'-0"  | 19'-0"   | 4     | Jamb-L | 2'-6"  | Framed Opening #2 - WINDOW 12X3, Sill 19/0/0, Height 3/0/0 |
| FO2 | 12'-0" | 3'-0"  | 19'-0"   | 2     | Jamb-L | 5'-6"  | Framed Opening #2 - WINDOW 12X3, Sill 19/0/0, Height 3/0/0 |
| FO2 | 12'-0" | 3'-0"  | 19'-0"   | 3     | Jamb-L | 2'-6"  | Framed Opening #2 - WINDOW 12X3, Sill 19/0/0, Height 3/0/0 |



| Mark | Part  | Thick. | Depth | Lap | Detail     |
|------|-------|--------|-------|-----|------------|
| 12   | 3'-0" |        |       |     | GFAP0114   |
| 11   | 2'-4" |        |       |     | GFAP1054   |
| 10   | 2'-6" |        |       |     | G31 (Typ.) |
| 9    | 1'-6" |        |       |     | G27        |
| 8    | 1'-4" |        |       |     | G26        |
| 7    | 3'-4" |        |       |     | G23        |
| 6    | 10"   |        |       |     | H2         |
| 5    | 3'-6" |        |       |     | J6         |
| 4    | 4'-6" |        |       |     | TSC1       |
| 3    | 3'-9" |        |       |     | JTG1       |
| 2    | 9"    |        |       |     | J3         |
| 1    | 1'-0" |        |       |     | PG1        |

Dimension Key Part Mark Key

Shape Name = DYMECH, Wall = 4

- UNLESS NOTED, USE 1/2 X 1 1/2 A325T BOLT (49080) AND NUT (47120) TWO WASHERS, SNUG TIGHTEN BOLTS FOR ALL SECONDARY CONNECTIONS.
- FLANGE BRACES ARE AN INTEGRAL PART OF THE STABILITY OF THE STRUCTURAL SYSTEM AND MUST BE PROPERLY INSTALLED PRIOR TO ERECTION OF WALL AND ROOF SHEETS.
- REMOVAL OR ALTERATION OF ANY COMPONENT IS PROHIBITED.

THE BUTLER MFG. ENGINEER'S SEAL APPLIES ONLY TO THE WORK PRODUCT OF BUTLER MFG. AND DESIGN AND PERFORMANCE REQUIREMENTS SPECIFIED BY BUTLER. THE BUTLER MFG. ENGINEER'S SEAL DOES NOT APPLY TO THE PERFORMANCE OR DESIGN OF ANY OTHER PRODUCT OR COMPONENT FURNISHED BY BUTLER EXCEPT TO ANY DESIGN OR PERFORMANCE REQUIREMENTS SPECIFIED BY BUTLER.

THIS DRAWING, INCLUDING THE INFORMATION HEREON, REMAINS THE PROPERTY OF BUTLER MFG. IT IS PROVIDED SOLELY FOR ERECTING THE BUILDING DESCRIBED IN THE APPLICABLE PURCHASE ORDER AND MAY BE REPRODUCED ONLY FOR THAT PURPOSE. IT SHALL NOT BE MODIFIED, REPRODUCED OR USED FOR ANY OTHER PURPOSE WITHOUT PRIOR WRITTEN APPROVAL OF BUTLER MFG.

THE GENERAL CONTRACTOR AND/OR ERECTOR IS SOLELY RESPONSIBLE FOR ACCURATE GOOD QUALITY WORKMANSHIP IN ERECTING THIS BUILDING IN ACCORDANCE WITH THIS DRAWING, DETAILS REFERENCED IN THIS DRAWING, ALL APPLICABLE BUTLER MFG. ERECTION GUIDES, AND INDUSTRY STANDARDS PERTAINING TO PROPER ERECTION, INCLUDING THE CORRECT USE OF TEMPORARY BRACING.

|                    |   |     |  |   |
|--------------------|---|-----|--|---|
| <b>B</b>           | <b>BUTLER MANUFACTURING</b>             |     | <b>DYMECH -Secondary at C</b>            |   |
|                    | 1540 GENESSEE ST. KANSAS CITY, MO 64102 |     | BUILDER: BBS Construction (Ontario) Ltd. |   |
| REV:               | DATE:                                   | BY: | DESCRIPTION:                             | CUSTOMER:                                       |
|                    |   |     |  | Ottawa, Ontario                                 |
| DRAWING SCALE: NTS |   |     | BUILDER'S PO#:                           | JOB #:  |
|                    |   |     |  | DATE: 1/15/2020                                 |
|                    |   |     |  | DRAWN/CHECK: 1                                  |
|                    |   |     |  | PAGE:   |
|                    |   |     |  | Butler Manufacturing<br>VPC VERSION: ADVNXT 3.7 |

| Covering Schedule |     |            |      |      |    |      |       |               |  |
|-------------------|-----|------------|------|------|----|------|-------|---------------|--|
| Id                | Qty | Length     | Type | Gage | OP | Fin. | Color | Direction     |  |
| #25               | 26  | 24'-9 3/4" | BRP  | 26   | 14 | Z    | AZ    | Left to Right |  |
| #26               | 26  | 24'-9 3/4" | BRP  | 26   | 15 | Z    | AZ    | Right to Left |  |

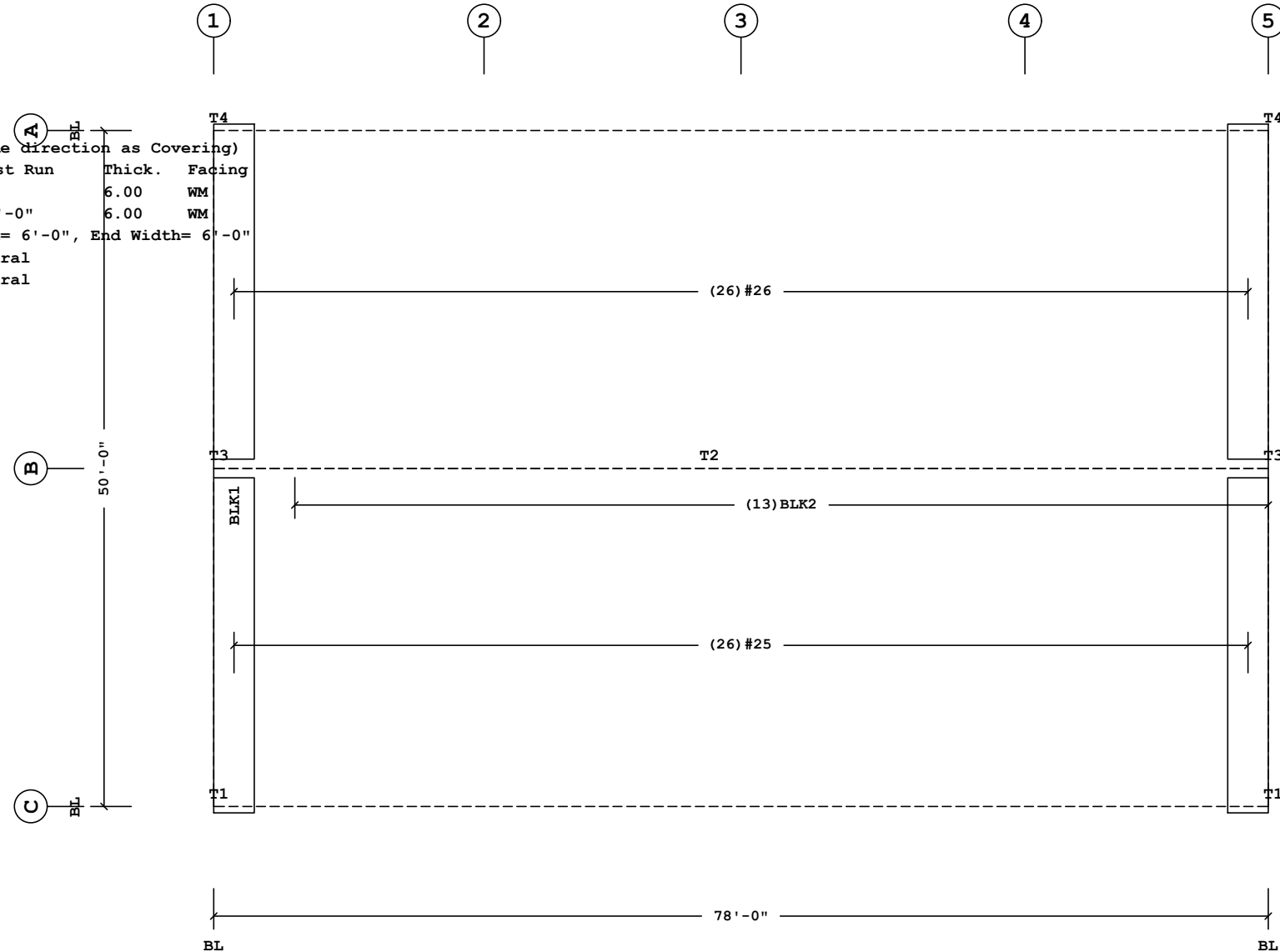
Oper. Code:14=SQ,SQ  
 Oper. Code:15=SQ,SQ  
 Finish:Z=AlZn  
 Color:AZ=Plain AlZn

| Trim Schedule |                           |
|---------------|---------------------------|
| Id            | Parts                     |
| T1            | 0630043                   |
| T2            | (26) 0560097              |
| T3            | BRRETT, RBT2, (0.1) WA10A |
| T4            | 0630043                   |

| Color            | Details      |
|------------------|--------------|
| Match Wall Color |              |
| Match Roof Color | ENB003,NV662 |
| Match Wall Color |              |
| Match Wall Color |              |

| Insulation Schedule (Install in same direction as Covering) |     |      |           |          |        |        |
|---|-----|------|-----------|----------|--------|--------|
| Id  | Qty | Type | Start Run | Last Run | Thick. | Facing |
| BLK1  | 1   | IB   | 53'-0"    |          | 6.00   | WM     |
| BLK2  | 13  | IB   | 53'-0"    | 53'-0"   | 6.00   | WM     |

Starter Width= 3'-0", Interm. Width= 6'-0", End Width= 6'-0"  
 Location =Outside Secondary Structural  
 Direction =Across Secondary Structural  
 Type:IB=Fiberglass Blanket  
 Facing:WM=WMP-50



**ROOF COVERING PLAN**

| Fastener Schedule |   |
|-------------------|---|
| Part              | Description                               |
| 0097357UNPNTD     | (T-1) 1/4-14 x 7/8", 3/8" Hex Hd w/Washer |

| Planograph Schedule |  |
|---------------------|--|
| Id                  | Details  |
| T1                  | P-081166, P-081236, P-081242, P-103223, P-104542, P-104551 |
| T2                  | P-102961, P-104288, P-105848                               |
| T3                  | P-081166, P-081168, P-GAI                                  |
| T4                  | P-081166, P-081236, P-081242, P-103223, P-104542, P-104551 |


Shape Name = DYMECH

- PRE-DRILLING 1/8 DIAMETER HOLES FOR STRUCTURAL FASTENERS MAY BE REQUIRED FOR HEAVY GAGE NESTED ZEE'S AND/OR FASTENERS TO STRUCTURAL BEAMS
- STEEL PANELS ARE AN INTEGRAL PART OF THE STRUCTURAL SYSTEM. REMOVAL OR ALTERATION WITHOUT PRIOR AUTHORIZATION IS PROHIBITED.
- DUE TO MANUFACTURING LIMITATIONS SHORT PANELS MAY REQUIRE FIELD CUTTING. SEE THE COVERING SCHEDULE FOR CUT LENGTHS.
- SEE JOB DETAILS FOR COVERING AND TRIM FASTENER SPECIFICATION.

THE BUTLER MFG. ENGINEER'S SEAL APPLIES ONLY TO THE WORK PRODUCT OF BUTLER MFG. AND DESIGN AND PERFORMANCE REQUIREMENTS SPECIFIED BY BUTLER. THE BUTLER MFG. ENGINEER'S SEAL DOES NOT APPLY TO THE PERFORMANCE OR DESIGN OF ANY OTHER PRODUCT OR COMPONENT FURNISHED BY BUTLER EXCEPT TO ANY DESIGN OR PERFORMANCE REQUIREMENTS SPECIFIED BY BUTLER.

THIS DRAWING, INCLUDING THE INFORMATION HEREON, REMAINS THE PROPERTY OF BUTLER MFG. IT IS PROVIDED SOLELY FOR ERECTING THE BUILDING DESCRIBED IN THE APPLICABLE PURCHASE ORDER AND MAY BE REPRODUCED ONLY FOR THAT PURPOSE. IT SHALL NOT BE MODIFIED, REPRODUCED OR USED FOR ANY OTHER PURPOSE WITHOUT PRIOR WRITTEN APPROVAL OF BUTLER MFG.

THE GENERAL CONTRACTOR AND/OR ERECTOR IS SOLELY RESPONSIBLE FOR ACCURATE GOOD QUALITY WORKMANSHIP IN ERECTING THIS BUILDING IN ACCORDANCE WITH THIS DRAWING, DETAILS REFERENCED IN THIS DRAWING, ALL APPLICABLE BUTLER MFG. ERECTION GUIDES, AND INDUSTRY STANDARDS PERTAINING TO PROPER ERECTION, INCLUDING THE CORRECT USE OF TEMPORARY BRACING.

|                    |  |                              |  |  |
|--------------------|--|------------------------------|--|--|
| <b>B</b>           | <b>BUTLER MANUFACTURING</b><br>1540 GENESSEE ST. KANSAS CITY, MO 64102 |                              | <b>ROOF COVERING PLAN</b>                |  |
|                    | REV:   | DATE:                        | BY:                                      | DESCRIPTION:   |
|                    | BUILDER: BBS Construction (Ontario) Ltd.                               |                              | CUSTOMER:                                |  |
|                    | LOCATION: Ottawa, Ontario  |                              | PROJECT: HERITAGE GRADE RESTORATION BLDG |  |
| DRAWING SCALE: NTS |  | BUILDER'S PO#:               |  | <br>BUTLER<br>Butler Manufacturing<br>VPC VERSION: ADVNXT 3.7 |
| 1/15/2020          |  | 10:36:32 PRELIMINARY DRAWING |  | JOB #:<br>DATE: 1/15/2020<br>DRAWN/CHECK: /<br>PAGE:   |



**Covering Schedule**

| Id | Qty | Type | Start Length | Gage | OP | Fin. | Color | Increment | Direction     |
|----|-----|------|--------------|------|----|------|-------|-----------|---------------|
| #1 | 3   | BRP  | 27'-0 1/2"   | 26   | 37 | K    | WB    | 1 1/2"    | Left to Right |
| #2 | 3   | BRP  | 5'-4 1/8"    | 26   | 36 | K    | WB    | 1 1/2"    | Left to Right |
| #3 | 6   | BRP  | 19'-0 5/8"   | 26   | 78 | K    | WB    |           | Left to Right |
| #4 | 2   | BRP  | 27'-9 1/2"   | 26   | 37 | K    | WB    | 1 1/2"    | Left to Right |
| #5 | 3   | BRP  | 28'-0"       | 26   | 37 | K    | WB    | -1 1/2"   | Left to Right |
| #6 | 3   | BRP  | 5'-6 5/8"    | 26   | 36 | K    | WB    | -1 1/2"   | Left to Right |
| #7 | 3   | BRP  | 27'-3"       | 26   | 37 | K    | WB    | -1 1/2"   | Left to Right |

**Trim Schedule**

| Id | Parts                                    |
|----|--|
| T1 | (2) BA225, (4.2) BT12A                   |
| T2 | (0.5) DSF12                              |
| T3 | DG12                                     |
| T4 | DSF12                                    |
| T5 | (0.5) DG12                               |
| T6 | (3) BRCT12                               |
| T7 | (2.1) BRCL12, (2.5) WA10A, (1.2) BRGT20R |
| T8 | (2.1) BRCL12, (2.5) WA10A, (1.2) BRGT20L |

| Color            | Details                              |
|------------------|--------------------------------------|
| Match Wall Color | ENB003, GV383, NV663, WCB036, WCB038 |
| Match Wall Color | NV539                                |
| Match Wall Color | NV537                                |
| Match Wall Color | NV538, NV539                         |
| Match Wall Color | NV537                                |
| Match Wall Color | WCB037, WCB040                       |
| Cool Birch White | KV357, KV358, PV166, WCB043, WCB044  |
| Cool Birch White | KV357, KV358, PV166, WCB043, WCB044  |

Oper. Code: 37=SQ, SQ

Oper. Code: 36=SQ, SQ

Oper. Code: 78=SQ, SQ

Installation Schedule (Install in same direction as Covering)

| Id   | Qty | Type | Start Run | Last Run | Thick. | Facing | Increment |
|------|-----|------|-----------|----------|--------|--------|-----------|
| BLK1 | 1   | IB   | 28'-6"    |          | 6.00   | WM     |           |
| BLK2 | 1   | IB   | 28'-6"    |          | 6.00   | WM     |           |
| BLK3 | 1   | IB   | 7'-0"     |          | 6.00   | WM     |           |
| BLK4 | 1   | IB   | 19'-0"    |          | 6.00   | WM     |           |
| BLK5 | 1   | IB   | 29'-0"    |          | 6.00   | WM     |           |
| BLK6 | 1   | IB   | 29'-6"    |          | 6.00   | WM     |           |
| BLK7 | 4   | IB   | 29'-0"    | 28'-6"   | 6.00   | WM     |           |

Starter Width= 4'-0", Interm. Width= 6'-0", End Width= 6'-0"

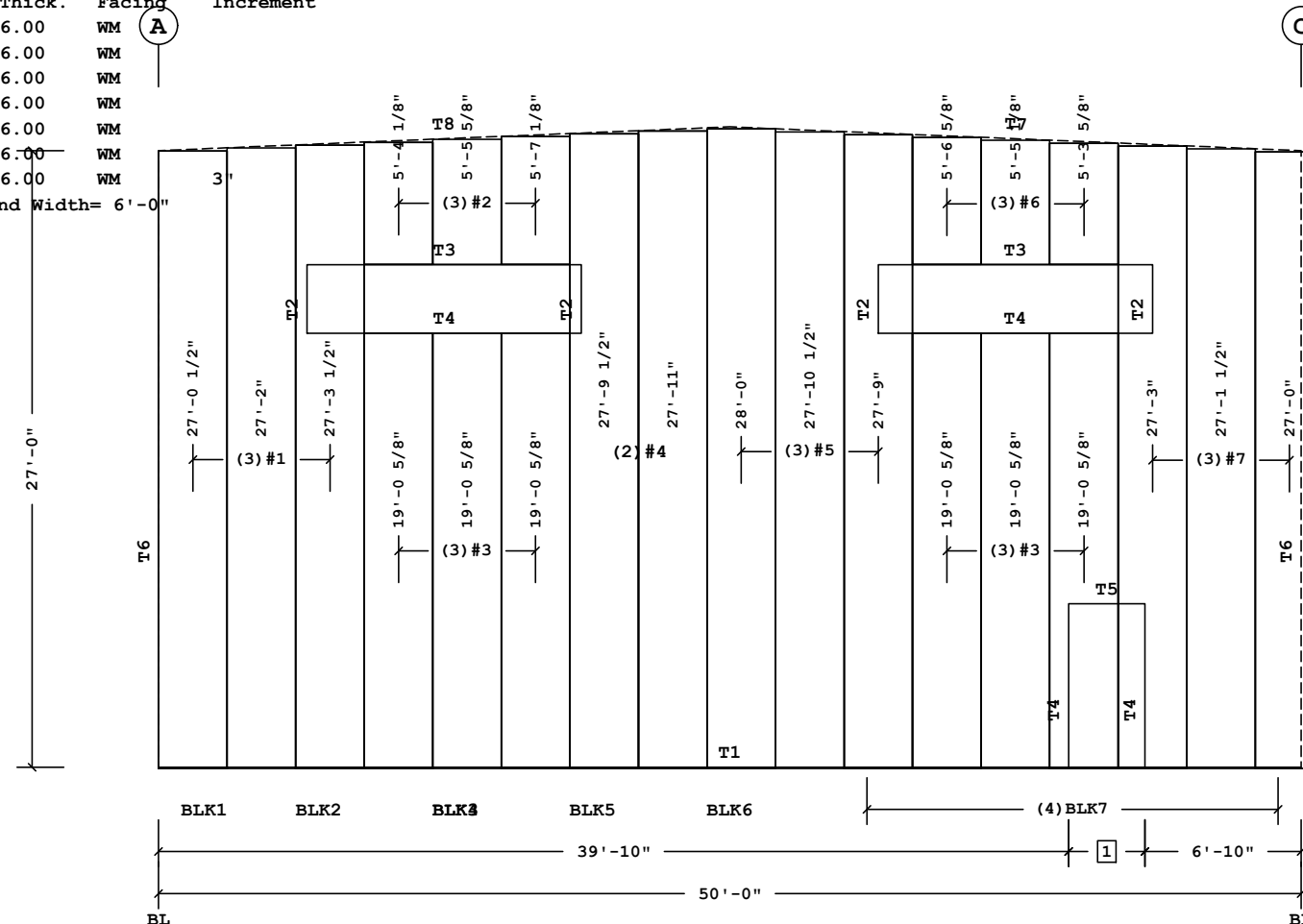
Location =Outside Secondary Structural

Direction =Across Secondary Structural

Type: IB= Fiberglass Blanket

Facing: WM=WMP-50

Shape Name = DYMECH , Wall = 1



1 3'-4"  
Dimension Key

**COVERING ELEVATION AT 1**

**Fastener Schedule**

| Part        | Description                                |
|-------------|--|
| 0097364-141 | (T-1) 1/4-14 x 3/4", T-30 Torx Hd w/Washer |

**Planograph Schedule**

| Id | Details                      |
|----|------------------------------|
| T1 | P-080873, P-081505, P-081612 |
| T2 | P-104219                     |
| T3 | P-104219                     |
| T4 |                              |
| T5 | P-104219                     |
| T6 | P-081612                     |
| T7 | P-081166, P-104288, P-GAI    |
| T8 | P-081166, P-104288, P-GAI    |

Shape Name = DYMECH , Wall = 1

- PRE-DRILLING 1/8 DIAMETER HOLES FOR STRUCTURAL FASTENERS MAY BE REQUIRED FOR HEAVY GAGE NESTED ZEE'S AND/OR FASTENERS TO STRUCTURAL BEAMS
- STEEL PANELS ARE AN INTEGRAL PART OF THE STRUCTURAL SYSTEM. REMOVAL OR ALTERATION WITHOUT PRIOR AUTHORIZATION IS PROHIBITED.
- DUE TO MANUFACTURING LIMITATIONS SHORT PANELS MAY REQUIRE FIELD CUTTING. SEE THE COVERING SCHEDULE FOR CUT LENGTHS.
- SEE JOB DETAILS FOR COVERING AND TRIM FASTENER SPECIFICATION.

THE BUTLER MFG. ENGINEER'S SEAL APPLIES ONLY TO THE WORK PRODUCT OF BUTLER MFG. AND DESIGN AND PERFORMANCE REQUIREMENTS SPECIFIED BY BUTLER. THE BUTLER MFG. ENGINEER'S SEAL DOES NOT APPLY TO THE PERFORMANCE OR DESIGN OF ANY OTHER PRODUCT OR COMPONENT FURNISHED BY BUTLER EXCEPT TO ANY DESIGN OR PERFORMANCE REQUIREMENTS SPECIFIED BY BUTLER.

THIS DRAWING, INCLUDING THE INFORMATION HEREON, REMAINS THE PROPERTY OF BUTLER MFG. IT IS PROVIDED SOLELY FOR ERECTING THE BUILDING DESCRIBED IN THE APPLICABLE PURCHASE ORDER AND MAY BE REPRODUCED ONLY FOR THAT PURPOSE. IT SHALL NOT BE MODIFIED, REPRODUCED OR USED FOR ANY OTHER PURPOSE WITHOUT PRIOR WRITTEN APPROVAL OF BUTLER MFG.

THE GENERAL CONTRACTOR AND/OR ERECTOR IS SOLELY RESPONSIBLE FOR ACCURATE GOOD QUALITY WORKMANSHIP IN ERECTING THIS BUILDING IN ACCORDANCE WITH THIS DRAWING, DETAILS REFERENCED IN THIS DRAWING, ALL APPLICABLE BUTLER MFG. ERECTION GUIDES, AND INDUSTRY STANDARDS PERTAINING TO PROPER ERECTION, INCLUDING THE CORRECT USE OF TEMPORARY BRACING.

| B BUTLER MANUFACTURING<br>1540 GENESSEE ST. KANSAS CITY, MO 64102 |       |     |              |
|---|-------|-----|--------------|
| REV:  | DATE: | BY: | DESCRIPTION: |
|   |       |     |              |
|   |       |     |              |
|   |       |     |              |
| DRAWING SCALE: NTS  |       |     |              |

| DYMECH -Covering at 1 |                                 |
|-----------------------|---------------------------------|
| BUILDER:              | BBS Construction (Ontario) Ltd. |
| CUSTOMER:             |                                 |
| LOCATION:             | Ottawa, Ontario                 |
| PROJECT:              | HERITAGE GRADE RESTORATION BLDG |
| BUILDER'S PO#:        |                                 |

|   |                 |
|---|-----------------|
|   | JOB #:          |
|   | DATE: 1/15/2020 |
| Butler Manufacturing<br>VPC VERSION: ADVNXT 3.7 | DRAWN/CHECK: /  |
|   | PAGE: /         |

**Covering Schedule**

| Id  | Qty | Type | Start Length | Gage | OP | Fin. | Color | Direction     |
|-----|-----|------|--------------|------|----|------|-------|---------------|
| #8  | 22  | BRP  | 27'-2"       | 26   | BB | K    | WB    | Left to Right |
| #10 | 1   | BRP  | 19'-11 1/8"  | 26   | DD | K    | WB    | Left to Right |
| #11 | 3   | BRP  | 5'-1 1/8"    | 26   | DD | K    | WB    | Left to Right |
| #12 | 3   | BRP  | 4'-11 3/4"   | 26   | 35 | K    | WB    | Left to Right |

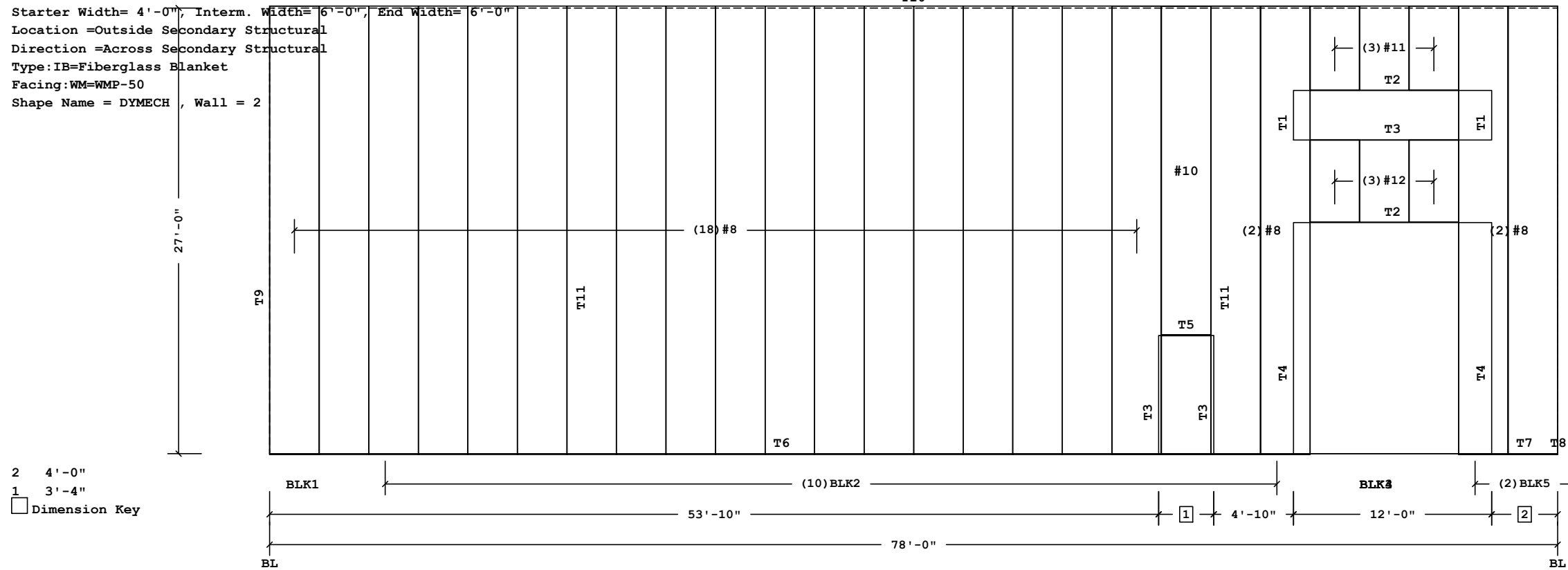
Oper. Code:BB=SQ,NT  
 Oper. Code:DD=SQ,NT  
 Oper. Code:35=SQ,SQ  
 Finish:K=Butler-Cote  
 Color:WB=Cool Birch White

**Insulation Schedule (Install in same direction as Covering)**

| Id   | Qty | Type | Start Run | Last Run | Thick. | Facing | Increment |
|------|-----|------|-----------|----------|--------|--------|-----------|
| BLK1 | 1   | IB   | 28'-0"    | 28'-0"   | 6.00   | WM     |           |
| BLK2 | 10  | IB   | 28'-0"    | 28'-0"   | 6.00   | WM     |           |
| BLK3 | 1   | IB   | 6'-0"     |          | 6.00   | WM     |           |
| BLK4 | 1   | IB   | 5'-0"     |          | 6.00   | WM     |           |
| BLK5 | 2   | IB   | 28'-0"    | 28'-0"   | 6.00   | WM     |           |

Starter Width= 4'-0", Interm. Width= 6'-0", End Width= 6'-0"

Location =Outside Secondary Structural  
 Direction =Across Secondary Structural  
 Type:IB=Fiberglass Blanket  
 Facing:WM=WMP-50  
 Shape Name = DYMECH , Wall = 2



2 4'-0"  
 1 3'-4"  
 Dimension Key

**Fastener Schedule**

| Part        | Description                                |
|-------------|--|
| 0097364-141 | (T-1) 1/4-14 x 3/4", T-30 Torx Hd w/Washer |

**COVERING ELEVATION AT A**

**Planograph Schedule**

| Id  | Details                      |
|-----|------------------------------|
| T1  | P-104219                     |
| T2  | P-104219                     |
| T3  |                              |
| T4  | P-104219                     |
| T5  | P-104219                     |
| T6  | P-080873, P-081505, P-081612 |
| T7  | P-080873, P-081505, P-081612 |
| T8  | P-081505, P-081612           |
| T9  | P-081612                     |
| T10 | P-105224, P-105225, P-105228 |
| T11 | P-105224, P-105225, P-105228 |

Shape Name = DYMECH , Wall = 2

1. PRE-DRILLING 1/8 DIAMETER HOLES FOR STRUCTURAL FASTENERS MAY BE REQUIRED FOR HEAVY GAGE NESTED ZEE'S AND/OR FASTENERS TO STRUCTURAL BEAMS  
 2. STEEL PANELS ARE AN INTEGRAL PART OF THE STRUCTURAL SYSTEM. REMOVAL OR ALTERATION WITHOUT PRIOR AUTHORIZATION IS PROHIBITED.  
 3. DUE TO MANUFACTURING LIMITATIONS SHORT PANELS MAY REQUIRE FIELD CUTTING. SEE THE COVERING SCHEDULE FOR CUT LENGTHS.  
 4. SEE JOB DETAILS FOR COVERING AND TRIM FASTENER SPECIFICATION.

THE BUTLER MFG. ENGINEER'S SEAL APPLIES ONLY TO THE WORK PRODUCT OF BUTLER MFG. AND DESIGN AND PERFORMANCE REQUIREMENTS SPECIFIED BY BUTLER. THE BUTLER MFG. ENGINEER'S SEAL DOES NOT APPLY TO THE PERFORMANCE OR DESIGN OF ANY OTHER PRODUCT OR COMPONENT FURNISHED BY BUTLER EXCEPT TO ANY DESIGN OR PERFORMANCE REQUIREMENTS SPECIFIED BY BUTLER.

THIS DRAWING, INCLUDING THE INFORMATION HEREON, REMAINS THE PROPERTY OF BUTLER MFG. IT IS PROVIDED SOLELY FOR ERECTING THE BUILDING DESCRIBED IN THE APPLICABLE PURCHASE ORDER AND MAY BE REPRODUCED ONLY FOR THAT PURPOSE. IT SHALL NOT BE MODIFIED, REPRODUCED OR USED FOR ANY OTHER PURPOSE WITHOUT PRIOR WRITTEN APPROVAL OF BUTLER MFG.  
 THE GENERAL CONTRACTOR AND/OR ERECTOR IS SOLELY RESPONSIBLE FOR ACCURATE GOOD QUALITY WORKMANSHIP IN ERECTING THIS BUILDING IN ACCORDANCE WITH THIS DRAWING, DETAILS REFERENCED IN THIS DRAWING, ALL APPLICABLE BUTLER MFG. ERECTION GUIDES, AND INDUSTRY STANDARDS PERTAINING TO PROPER ERECTION, INCLUDING THE CORRECT USE OF TEMPORARY BRACING.

**B BUTLER MANUFACTURING**  
 1540 GENESSEE ST. KANSAS CITY, MO 64102

REV: DATE: BY: DESCRIPTION:

DRAWING SCALE: NTS

**BUTLER**  
 BUTLER MANUFACTURING  
 1540 GENESSEE ST. KANSAS CITY, MO 64102

DATE: 1/15/2020  
 LOCATION: Ottawa, Ontario  
 PROJECT: HERITAGE GRADE RESTORATION BLDG  
 DRAWN/CHECK: /  
 PAGE: /

**BUTLER**  
 BUTLER MANUFACTURING  
 A division of BlueScope Buildings North America, Inc.

JOB #:  
 DATE: 1/15/2020  
 DRAWN/CHECK: /  
 PAGE: /

**Covering Schedule**

| Id  | Qty | Type | Start Length | Gage | OP | Fin. | Color | Increment | Direction     |
|-----|-----|------|--------------|------|----|------|-------|-----------|---------------|
| #13 | 3   | BRP  | 27'-0 1/2"   | 26   | 37 | K    | WB    | 1 1/2"    | Left to Right |
| #14 | 3   | BRP  | 5'-4 1/8"    | 26   | 36 | K    | WB    | 1 1/2"    | Left to Right |
| #15 | 6   | BRP  | 19'-0 5/8"   | 26   | 78 | K    | WB    |           | Left to Right |
| #16 | 2   | BRP  | 27'-9 1/2"   | 26   | 37 | K    | WB    | 1 1/2"    | Left to Right |
| #17 | 3   | BRP  | 28'-0"       | 26   | 37 | K    | WB    | -1 1/2"   | Left to Right |
| #18 | 3   | BRP  | 5'-6 5/8"    | 26   | 36 | K    | WB    | -1 1/2"   | Left to Right |
| #19 | 3   | BRP  | 27'-3"       | 26   | 37 | K    | WB    | -1 1/2"   | Left to Right |

Oper. Code:37=SQ,SQ

Oper. Code:36=SQ,SQ

Oper. Code:78=SQ,SQ

Installation Schedule (Install in same direction as Covering)

| Id   | Qty | Type | Start Run | Last Run | Thick. | Facing | Increment |
|------|-----|------|-----------|----------|--------|--------|-----------|
| BLK1 | 1   | IB   | 28'-6"    |          | 6.00   | WM     |           |
| BLK2 | 1   | IB   | 28'-6"    |          | 6.00   | WM     |           |
| BLK3 | 1   | IB   | 7'-0"     |          | 6.00   | WM     |           |
| BLK4 | 1   | IB   | 19'-0"    |          | 6.00   | WM     |           |
| BLK5 | 1   | IB   | 29'-0"    |          | 6.00   | WM     |           |
| BLK6 | 1   | IB   | 29'-6"    |          | 6.00   | WM     |           |
| BLK7 | 4   | IB   | 29'-0"    | 28'-6"   | 6.00   | WM     |           |

Starter Width= 4'-0", Interm. Width= 6'-0", End Width= 6'-0"

Location =Outside Secondary Structural

Direction =Across Secondary Structural

Type:IB=Fiberglass Blanket

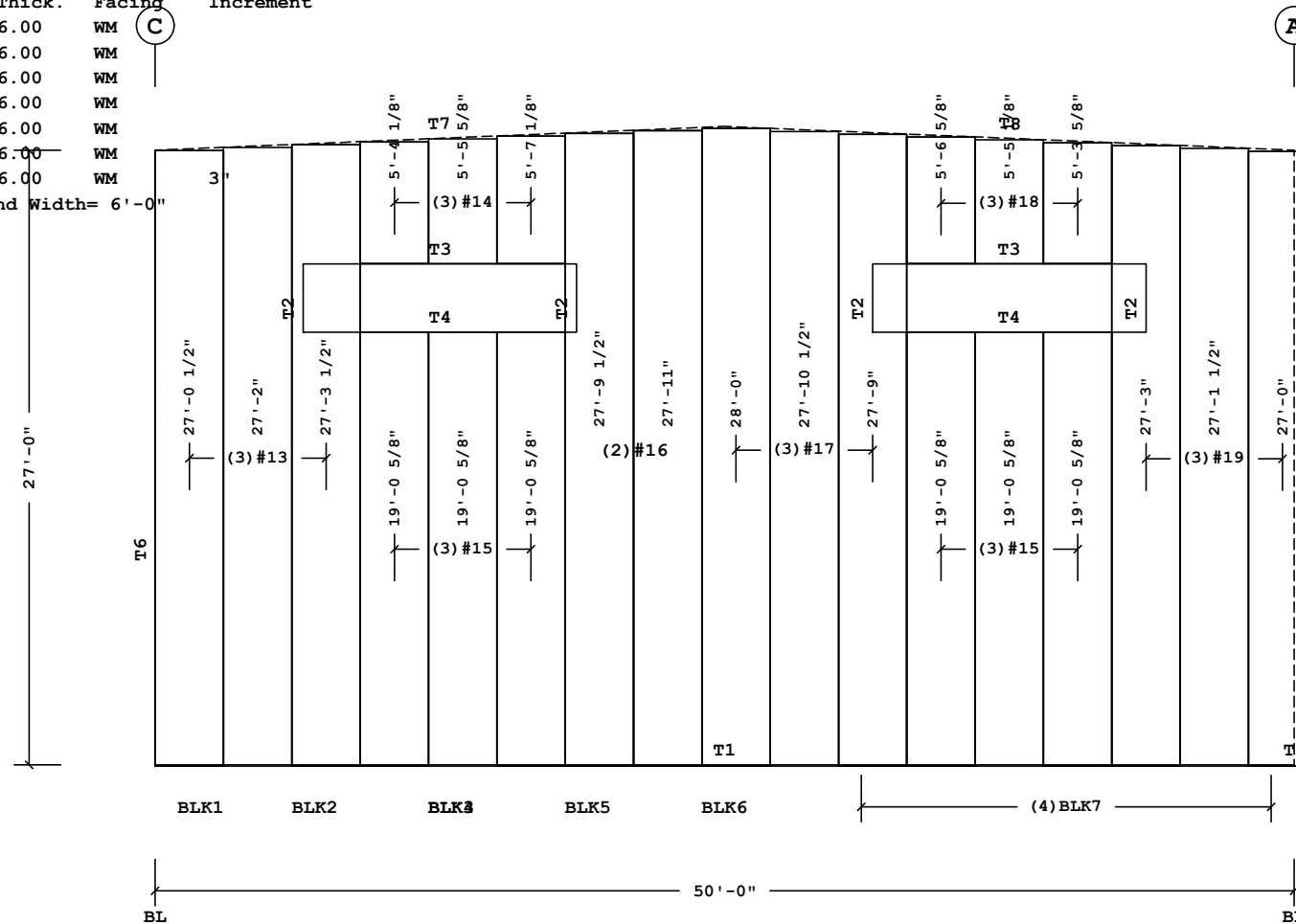
Facing:WM=WMP-50

Shape Name = DYMECH , Wall = 3

**Trim Schedule**

| Id | Parts                                 |
|----|---------------------------------------|
| T1 | (2)BA225, (4.2)BT12A                  |
| T2 | (0.5)DSF12                            |
| T3 | DG12                                  |
| T4 | DSF12                                 |
| T5 | CTB2L,CTB2R                           |
| T6 | (3)BRCT12                             |
| T7 | (2.1)BRCL12, (2.5)WA10A, (1.2)BRGT20L |
| T8 | (2.1)BRCL12, (2.5)WA10A, (1.2)BRGT20R |

| Color            | Details                          |
|------------------|----------------------------------|
| Match Wall Color | ENB003,GV383,NV663,WCB036,WCB038 |
| Match Wall Color | NV539                            |
| Match Wall Color | NV537                            |
| Match Wall Color | NV538                            |
| Match Wall Color | ENB003,NV663,WCB036,WCB038       |
| Match Wall Color | WCB037,WCB040                    |
| Cool Birch White | KV357,KV358,PV166,WCB043,WCB044  |
| Cool Birch White | KV357,KV358,PV166,WCB043,WCB044  |



**Fastener Schedule**

| Part        | Description                                |
|-------------|--|
| 0097364-141 | (T-1) 1/4-14 x 3/4", T-30 Torx Hd w/Washer |

**COVERING ELEVATION AT 5**

**Planograph Schedule**

| Id | Details                    |
|----|----------------------------|
| T1 | P-080873,P-081505,P-081612 |
| T2 | P-104219                   |
| T3 | P-104219                   |
| T4 |                            |
| T5 | P-081505,P-081612          |
| T6 | P-081612                   |
| T7 | P-081166,P-104288,P-GAI    |
| T8 | P-081166,P-104288,P-GAI    |

Shape Name = DYMECH , Wall = 3

1. PRE-DRILLING 1/8 DIAMETER HOLES FOR STRUCTURAL FASTENERS MAY BE REQUIRED FOR HEAVY GAGE NESTED ZEE'S AND/OR FASTENERS TO STRUCTURAL BEAMS  
 2. STEEL PANELS ARE AN INTEGRAL PART OF THE STRUCTURAL SYSTEM. REMOVAL OR ALTERATION WITHOUT PRIOR AUTHORIZATION IS PROHIBITED.  
 3. DUE TO MANUFACTURING LIMITATIONS SHORT PANELS MAY REQUIRE FIELD CUTTING. SEE THE COVERING SCHEDULE FOR CUT LENGTHS.  
 4. SEE JOB DETAILS FOR COVERING AND TRIM FASTENER SPECIFICATION.

THE BUTLER MFG. ENGINEER'S SEAL APPLIES ONLY TO THE WORK PRODUCT OF BUTLER MFG. AND DESIGN AND PERFORMANCE REQUIREMENTS SPECIFIED BY BUTLER. THE BUTLER MFG. ENGINEER'S SEAL DOES NOT APPLY TO THE PERFORMANCE OR DESIGN OF ANY OTHER PRODUCT OR COMPONENT FURNISHED BY BUTLER EXCEPT TO ANY DESIGN OR PERFORMANCE REQUIREMENTS SPECIFIED BY BUTLER.

THIS DRAWING, INCLUDING THE INFORMATION HEREON, REMAINS THE PROPERTY OF BUTLER MFG. IT IS PROVIDED SOLELY FOR ERECTING THE BUILDING DESCRIBED IN THE APPLICABLE PURCHASE ORDER AND MAY BE REPRODUCED ONLY FOR THAT PURPOSE. IT SHALL NOT BE MODIFIED, REPRODUCED OR USED FOR ANY OTHER PURPOSE WITHOUT PRIOR WRITTEN APPROVAL OF BUTLER MFG.

THE GENERAL CONTRACTOR AND/OR ERECTOR IS SOLELY RESPONSIBLE FOR ACCURATE GOOD QUALITY WORKMANSHIP IN ERECTING THIS BUILDING IN ACCORDANCE WITH THIS DRAWING, DETAILS REFERENCED IN THIS DRAWING, ALL APPLICABLE BUTLER MFG. ERECTION GUIDES, AND INDUSTRY STANDARDS PERTAINING TO PROPER ERECTION, INCLUDING THE CORRECT USE OF TEMPORARY BRACING.

|  |       |     |              |
|--|-------|-----|--------------|
| <b>B</b> BUTLER MANUFACTURING<br>1540 GENESSEE ST. KANSAS CITY, MO 64102 |       |     |              |
| REV:   | DATE: | BY: | DESCRIPTION: |
|  |       |     |              |
| DRAWING SCALE: NTS   |       |     |              |

|                              |                                 |
|------------------------------|---------------------------------|
| <b>DYMECH -Covering at 5</b> |                                 |
| BUILDER:                     | BBS Construction (Ontario) Ltd. |
| CUSTOMER:                    |                                 |
| LOCATION:                    | Ottawa, Ontario                 |
| PROJECT:                     | HERITAGE GRADE RESTORATION BLDG |
| BUILDER'S PO#:               |                                 |

|   |                 |
|---|-----------------|
|   | JOB #:          |
|   | DATE: 1/15/2020 |
|   | DRAWN/CHECK: /  |
| Butler Manufacturing<br>VPC VERSION: ADVNXT 3.7 |                 |

**Covering Schedule**

| Id  | Qty | Type | Start Length | Gage | OP | Fin. | Color | Direction     |
|-----|-----|------|--------------|------|----|------|-------|---------------|
| #20 | 13  | BRP  | 27'-2"       | 26   | BB | K    | WB    | Left to Right |
| #21 | 12  | BRP  | 4'-11 3/4"   | 26   | 35 | K    | WB    | Left to Right |
| #22 | 12  | BRP  | 5'-1 1/8"    | 26   | DD | K    | WB    | Left to Right |
| #23 | 1   | BRP  | 19'-11 1/8"  | 26   | DD | K    | WB    | Left to Right |

Oper. Code:BB=SQ,NT  
 Oper. Code:35=SQ,SQ  
 Oper. Code:DD=SQ,NT  
 Finish:K=Butler-Cote  
 Color:WB=Cool Birch White

**Trim Schedule**

| Id  | Parts                              | Color            | Details                              |
|-----|------------------------------------|------------------|--------------------------------------|
| T1  | (0.5)DSF12                         | Match Wall Color | NV539                                |
| T2  | DG12                               | Match Wall Color | NV537                                |
| T3  | DSF12                              | Match Wall Color | NV538,NV539                          |
| T4  | (1.5)DSF12                         | Match Wall Color | NV539                                |
| T5  | (0.5)DG12                          | Match Wall Color | NV537                                |
| T6  | (0.1)BA225, (0.3)BT12A             | Match Wall Color | ENB003, GV383, NV663, WCB036, WCB038 |
| T7  | (0.2)BA225, (0.4)BT12A             | Match Wall Color | ENB003, GV383, NV663, WCB036, WCB038 |
| T8  | (0.4)BA225, (0.7)BT12A             | Match Wall Color | ENB003, GV383, NV663, WCB036, WCB038 |
| T9  | (0.2)BA225, (0.3)BT12A             | Match Wall Color | ENB003, GV383, NV663, WCB036, WCB038 |
| T10 | CTB2L, CTB2R                       | Match Wall Color | ENB003, NV663, WCB036, WCB038        |
| T11 | (3.5)GTR25                         | Cool Birch White | MV090, WCB028, WCB045                |
| T12 | 0008738, (2)4CE45, (3)CP410, 4CE75 | Match Wall Color | KV846                                |

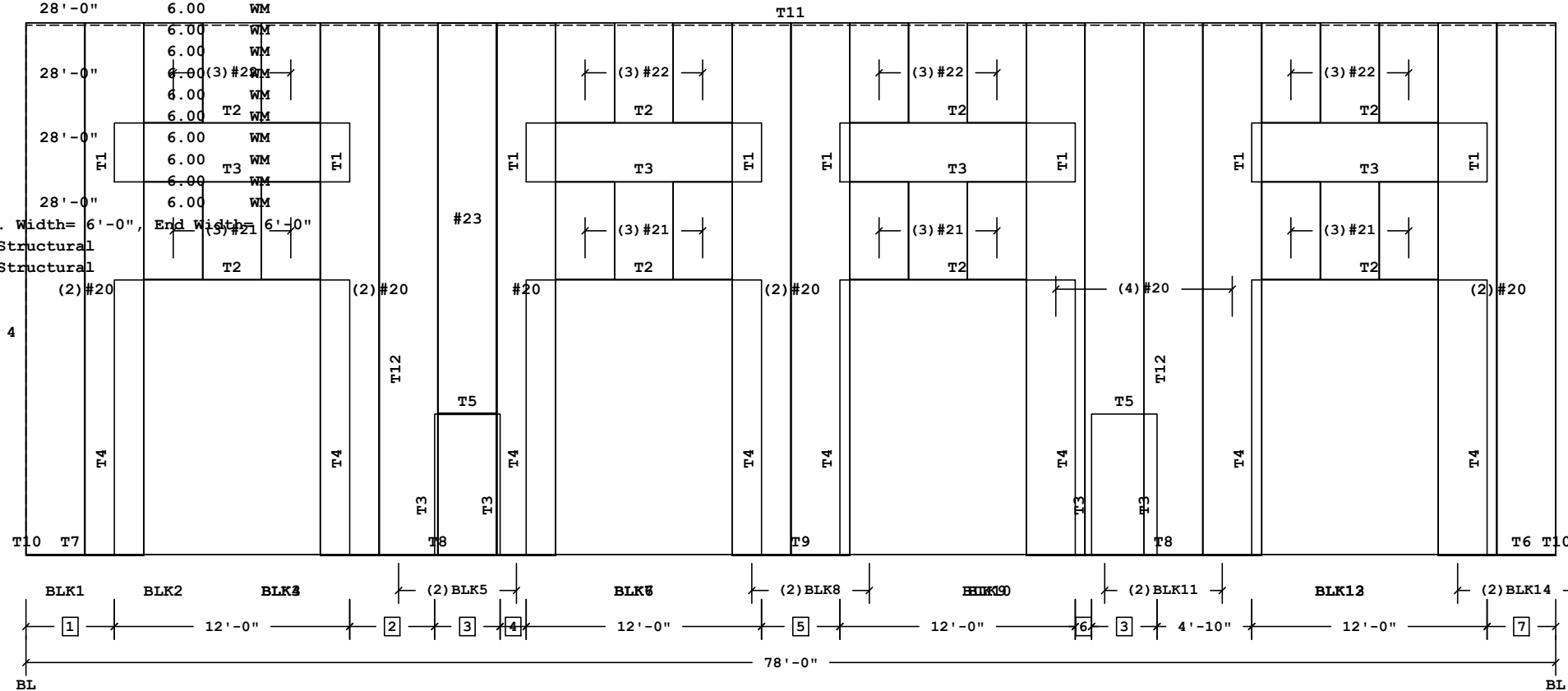
**Insulation Schedule (Install in same direction as Covering)**

| Id    | Qty | Type | Start Run | Last Run | Thick. | Facing | Increment |
|-------|-----|------|-----------|----------|--------|--------|-----------|
| BLK1  | 1   | IB   | 28'-0"    |          | 6.00   | WM     |           |
| BLK2  | 1   | IB   | 28'-0"    |          | 6.00   | WM     |           |
| BLK3  | 1   | IB   | 6'-0"     |          | 6.00   | WM     |           |
| BLK4  | 1   | IB   | 5'-0"     |          | 6.00   | WM     |           |
| BLK5  | 2   | IB   | 28'-0"    | 28'-0"   | 6.00   | WM     |           |
| BLK6  | 1   | IB   | 5'-0"     |          | 6.00   | WM     |           |
| BLK7  | 1   | IB   | 6'-0"     |          | 6.00   | WM     |           |
| BLK8  | 2   | IB   | 28'-0"    | 28'-0"   | 6.00   | WM     |           |
| BLK9  | 1   | IB   | 6'-0"     |          | 6.00   | WM     |           |
| BLK10 | 1   | IB   | 5'-0"     |          | 6.00   | WM     |           |
| BLK11 | 2   | IB   | 28'-0"    | 28'-0"   | 6.00   | WM     |           |
| BLK12 | 1   | IB   | 5'-0"     |          | 6.00   | WM     |           |
| BLK13 | 1   | IB   | 6'-0"     |          | 6.00   | WM     |           |
| BLK14 | 2   | IB   | 28'-0"    | 28'-0"   | 6.00   | WM     |           |

Starter Width= 4'-0", Interm. Width= 6'-0", End Width= 6'-0"  
 Location =Outside Secondary Structural  
 Direction =Across Secondary Structural  
 Type:IB=Fiberglass Blanket  
 Facing:WM=WMP-50  
 Shape Name = DYMECH, Wall = 4

7 3'-6"  
 6 10"  
 5 4'-0"  
 4 1'-4"  
 3 3'-4"  
 2 4'-4"  
 1 4'-6"

Dimension Key



**Fastener Schedule**

| Part        | Description                                |
|-------------|--|
| 0097364-141 | (T-1) 1/4-14 x 3/4", T-30 Torx Hd w/Washer |

**Planograph Schedule**

| Id  | Details  |
|-----|--|
| T1  | P-104219   |
| T2  | P-104219   |
| T3  |  |
| T4  | P-104219   |
| T5  | P-104219   |
| T6  | P-080873, P-081505, P-081612   |
| T7  | P-080873, P-081505, P-081612   |
| T8  | P-080873, P-081505, P-081612   |
| T9  | P-080873, P-081505, P-081612   |
| T10 |  |
| T11 | P-080873, P-080948, P-081242, P-103223, P-103315, P-104288, P-104550 |
| T12 | P-105224, P-105225, P-105228   |

**COVERING ELEVATION AT C**

Shape Name = DYMECH, Wall = 4

1. PRE-DRILLING 1/8 DIAMETER HOLES FOR STRUCTURAL FASTENERS MAY BE REQUIRED FOR HEAVY GAGE NESTED ZEE'S AND/OR FASTENERS TO STRUCTURAL BEAMS  
 2. STEEL PANELS ARE AN INTEGRAL PART OF THE STRUCTURAL SYSTEM. REMOVAL OR ALTERATION WITHOUT PRIOR AUTHORIZATION IS PROHIBITED.  
 3. DUE TO MANUFACTURING LIMITATIONS SHORT PANELS MAY REQUIRE FIELD CUTTING. SEE THE COVERING SCHEDULE FOR CUT LENGTHS.  
 4. SEE JOB DETAILS FOR COVERING AND TRIM FASTENER SPECIFICATION.

THE BUTLER MFG. ENGINEER'S SEAL APPLIES ONLY TO THE WORK PRODUCT OF BUTLER MFG. AND DESIGN AND PERFORMANCE REQUIREMENTS SPECIFIED BY BUTLER. THE BUTLER MFG. ENGINEER'S SEAL DOES NOT APPLY TO THE PERFORMANCE OR DESIGN OF ANY OTHER PRODUCT OR COMPONENT FURNISHED BY BUTLER EXCEPT TO ANY DESIGN OR PERFORMANCE REQUIREMENTS SPECIFIED BY BUTLER.

THIS DRAWING, INCLUDING THE INFORMATION HEREON, REMAINS THE PROPERTY OF BUTLER MFG. IT IS PROVIDED SOLELY FOR ERECTING THE BUILDING DESCRIBED IN THE APPLICABLE PURCHASE ORDER AND MAY BE REPRODUCED ONLY FOR THAT PURPOSE. IT SHALL NOT BE MODIFIED, REPRODUCED OR USED FOR ANY OTHER PURPOSE WITHOUT PRIOR WRITTEN APPROVAL OF BUTLER MFG.

THE GENERAL CONTRACTOR AND/OR ERECTOR IS SOLELY RESPONSIBLE FOR ACCURATE GOOD QUALITY WORKMANSHIP IN ERECTING THIS BUILDING IN ACCORDANCE WITH THIS DRAWING, DETAILS REFERENCED IN THIS DRAWING, ALL APPLICABLE BUTLER MFG. ERECTION GUIDES, AND INDUSTRY STANDARDS PERTAINING TO PROPER ERECTION, INCLUDING THE CORRECT USE OF TEMPORARY BRACING.

|                           |       |  |              |
|---------------------------|-------|--|--------------|
| <b>B</b>                  |       | BUTLER MANUFACTURING<br>1540 GENESSEE ST. KANSAS CITY, MO 64102                    |              |
| REV:                      | DATE: | BY:  | DESCRIPTION: |
|                           |       |  |              |
| DRAWING SCALE: NTS        |       | BUILDER: BBS Construction (Ontario) Ltd.<br>CUSTOMER: P-105224, P-105225, P-105228 |              |
| LOCATION: Ottawa, Ontario |       | PROJECT: HERITAGE GRADE RESTORATION BLDG   |              |
| BUILDER'S PO#:            |       | Butler Manufacturing<br>VPC VERSION: ADVNXT 3.7                                    |              |
| DATE: 1/15/2020           |       | DRAWN/CHECK: /   |              |
| JOB #:                    |       | PAGE:  |              |