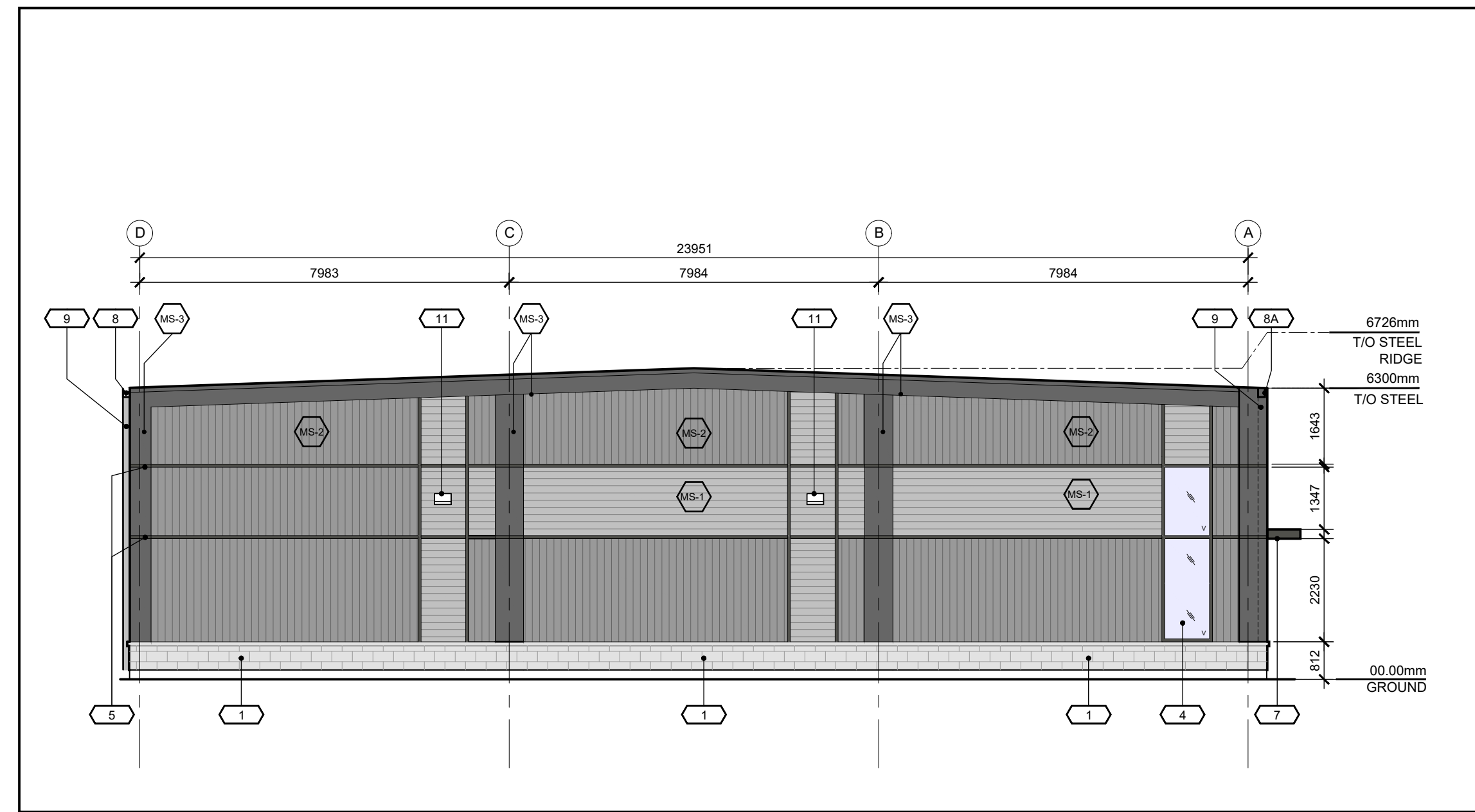
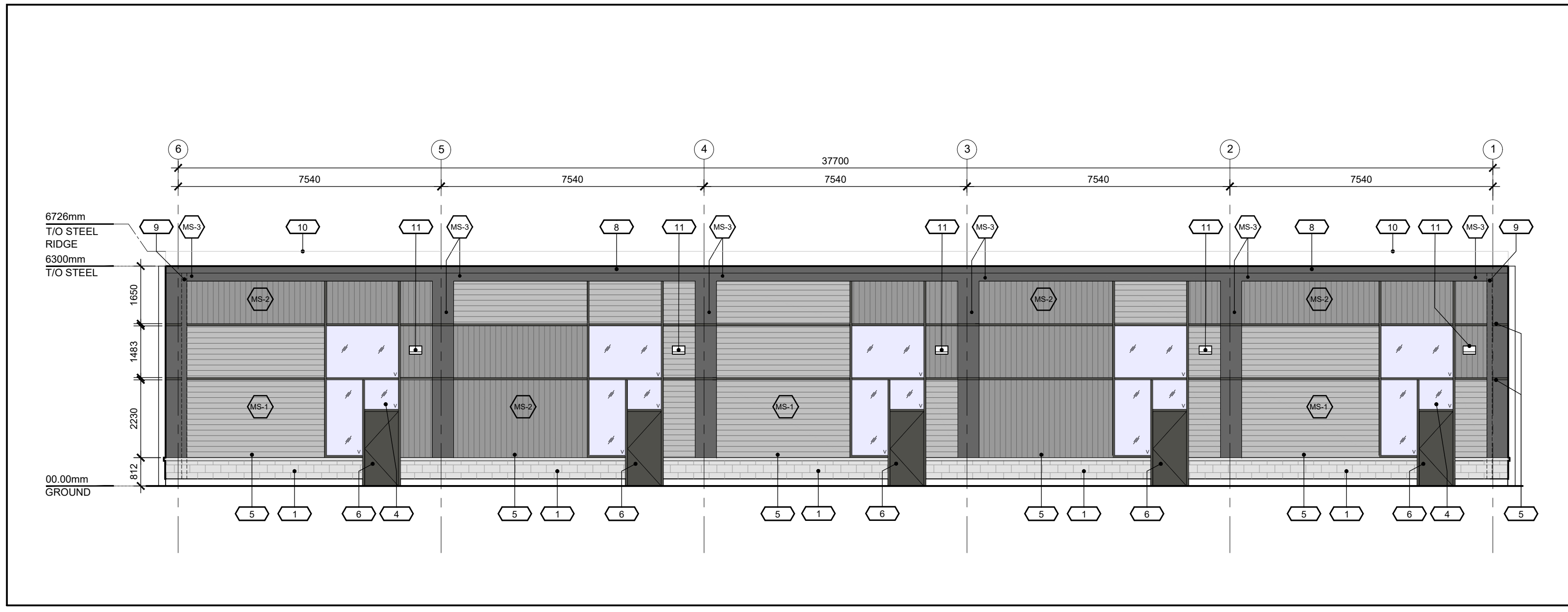


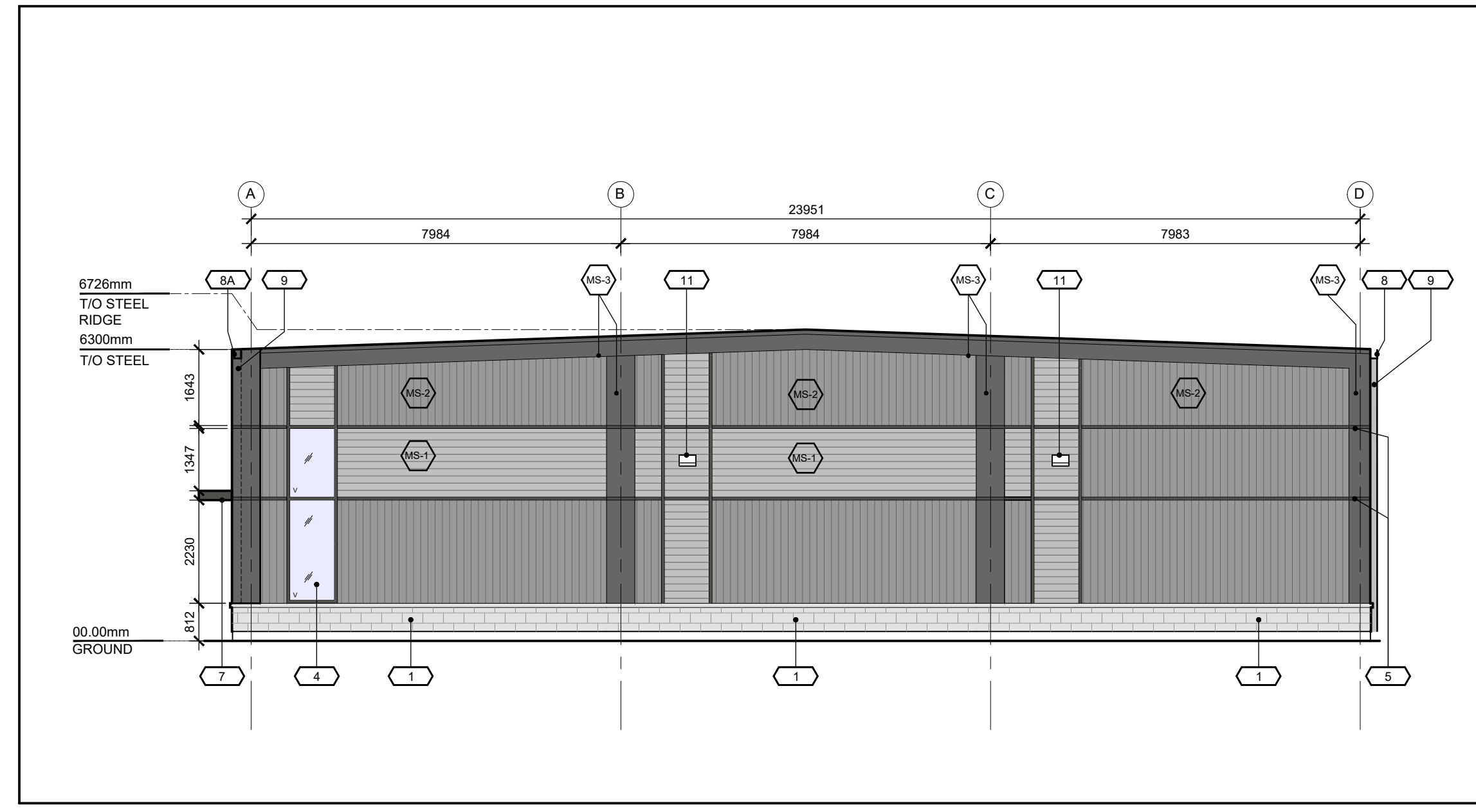
**01 SOUTH ELEVATION**  
SP-A02 SCALE: 1:100



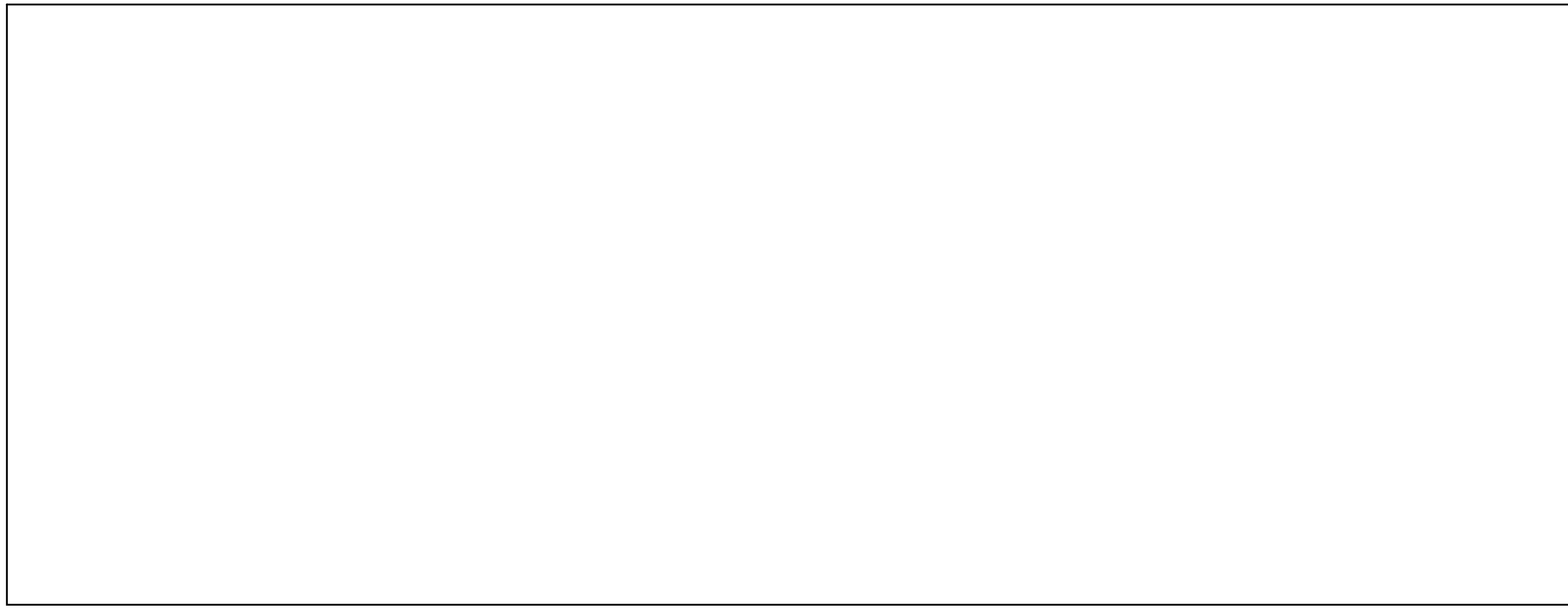
**02 WEST ELEVATION**  
SP-A02 SCALE: 1:100



**03 NORTH ELEVATION**  
SP-A02 SCALE: 1:100



**04 EAST ELEVATION**  
SP-A02 SCALE: 1:100



**05 RESERVED**  
SP-A02 SCALE: N/A

**KEY NOTES**

1	EXTERIOR MASONRY
2	EXTERIOR METAL FLASHING Colour: BLACK
3	GARAGE DOOR Colour: TO MATCH MS-1
4	GLAZING - VISION GLASS Mullion Colour: BLACK
5	2" METAL REVEAL Colour: TO MATCH MS-3
6	EXIT DOOR Colour: TO MATCH MS-1
7	ENTRANCE CANOPY
8	GUTTER
8A	GUTTER BEHIND CLADDING
9	GUTTER DOWN SPOUT
10	ROOF PEAK BEYOND
11	EXTERIOR LIGHTENING

**MATERIALS**

MS-1	EXTERIOR METAL CLADDING Colour: LIGHT GREY
MS-2	EXTERIOR METAL CLADDING Colour: MEDIUM GREY
MS-3	EXTERIOR METAL CLADDING Colour: DARK GREY

**06 MATERIALS & NOTES**  
SP-A02 SCALE: N/A

North

Revisions

No.	By	Description	Date
01	KE	ISSUED FOR REVIEW	2021-05-06
02	KE	ISSUED FOR SPA	2021-07-06
03	KE	ISSUED FOR SPA	2022-02-17
04	KE	ISSUED FOR SPA	2022-03-03

Project

**POWER-TEK  
PROPOSED  
INDUSTRIAL BUILDING**

155 IBER ROAD, OTTAWA

Drawing

**EXTERIOR ELEVATIONS**

Scale AS NOTED Stamp

Drawn KE

Checked JAS



Project No. 21-106  
Date 2021-04-02

Drawing No. **SP-A02**