

Landscape / Planting Plan

Scale 1:250

ID	Qty	Botanical Name	Common Name	Scheduled Size	Remarks
Plant List					
TREES					
ArAS'	1	Acer rubrum 'Autumn Spire'	Red Maple	70mm caliper	WB, Staked
Bn	1	Betula nigra	River Birch Multi	40mm caliper	WB, Staked
CoPS	4	Celtis occidentalis 'Prairie Sentinel'	Prairie Sentinel Hackberry	60mm caliper	WB, Staked
Pp	5	Picea pungens	Colorado Spruce	200cm ht	WB, Staked
Pc	2	Pinus cembra	Swiss Stone Pine	125cm ht	WB, Staked
QrF	3	Quercus robur 'Fastigiata'	Pyramidal English Oak	50mm caliper	WB, Staked
SHRUBS					
CsK	3	Cornus sericea 'Kelsevi'	Kelsey's Dwarf Red-Osier Dogwood	50cm ht	
Ea	2	Euonymus alatus	Winged Burning Bush	2 gallon pot	
HaA	10	Hydrangea arborescens 'Annabelle'	Annabelle Hydrangea	2 gallon pot	
HpG	10	Hydrangea paniculata 'Grandiflora'	Peegee Hydrangea	60cm ht	
Phv	3	Philadelphus x virginialis	Mock Orange	60mm dia.	WB Staked
Ra	1	Rhus aromatica	Fragrant Sumac	50cm ht.	
ToH	5	Thuja occidentalis 'Holmstrup'	Holmstrup Cedar	125cm ht	
ORNAMENTAL GRASSES					
CaKF	24	Calamagrostis x acutiflora 'Karl Foerster'	Karl Foerster Feather Reed Grass	1 gal.	1 gallon pot
Hs	10	Helictrochon sempervirens	Ornamental Oats	3 year	1 gallon pot
PERENNIALS					
PvA	70	Low sun perennial mix at winding path		150mm pot	
PvB	55	Low sun mix, front of bed		150mm pot	
PvC	235	Mid height sun perennial mix		150mm pot	
PvE	12	Shade perennial mix, planter		150mm pot	

Perennial types: (invasives such as miscanthus or purple loosestrife are not to be planted)

PvA: Low sun perennial mix at winding path - <30cm ht: Pink Moss Phlox, Sunsparkler Blue Elf Sedum, Creeping Thyme Dragon's Blood Sedum, Creeping Speedwell

PvB: Low sun perennial mix at front of bed - <30cm ht: Silvermound Artemisia, Yellow Hardy Ice Plant, Candytuft, Dragon's Blood Stonecrop, Red Creeping Thyme

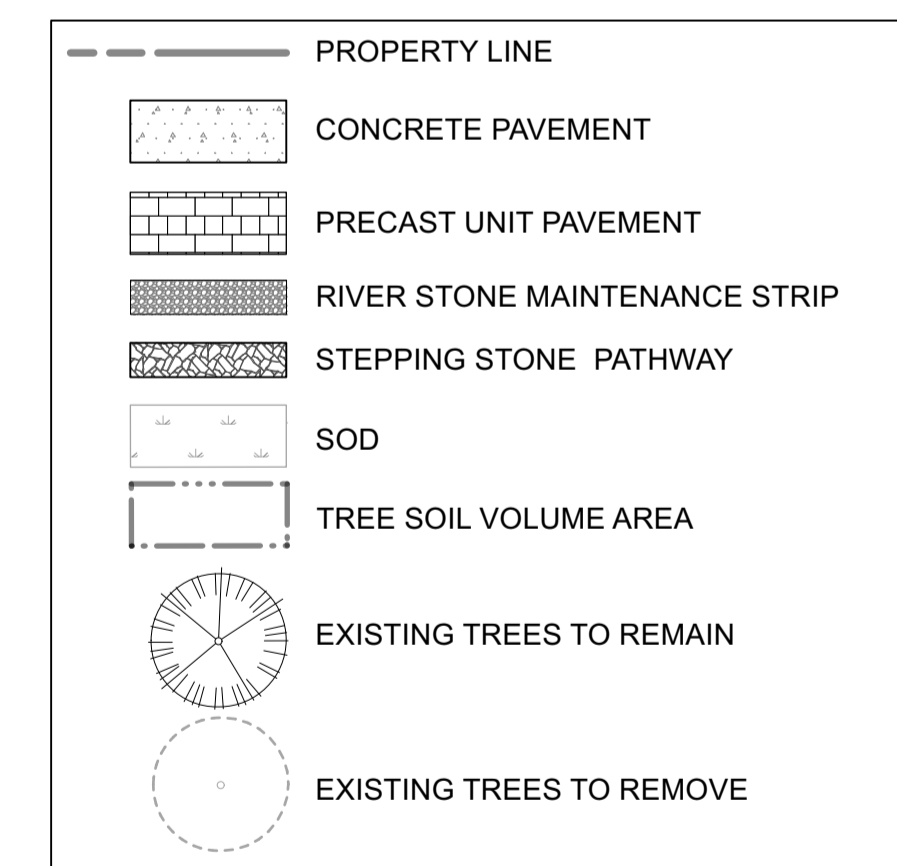
PvC: Flowering perennial mix for sun <125cm ht, minimum 5 species: Purple Coneflower var, Daylily var (red / yellow), Gayfeather var (white), Siberian Iris var (blue), Rudbeckia (orange), Spiked Speedwell (pink / white), Russian Sage

PvD: Perennials for shade mix, <125cm ht: Astilbe var (white, cream), Hosta var, Hellebore var (ivory, pink), Plantain Lily var, Ostrich Fern

PvE: Perennials for planter <100cm ht: Fern spp., Canada Columbine, Rodgersia pinnata 'Elegans' (pink/yellow), Columbine-leaved Meadowrue, Hosta var,

Soil Volume Area, Tree Quantity and Size	Tree Quantity	OTTAWA Target Soil Volume (m³)	Design Soil Volume	Soil Adequacy percentage
AREA A - 4 columnar trees, 1 conifer plant bed (135 sq m x 0.45 metre deep)	5	51.0	60.8	119.12%
AREA B - 1 medium tree, 4 columnar trees, 1 conifer plant bed (250 sq m x 0.45 metre deep)	6	66.0	112.5	170.45%
AREA C - 5 conifers plant bed (120 sq m x 0.6 metre deep)	5	75.0	72.0	96.00%

Legend



NOTE:
THIS PLAN IS ISSUED FOR SITE PLAN CONTROL SUBMISSION ONLY. ADDITIONAL DETAILING AND SPECIFICATIONS ARE REQUIRED PRIOR TO TENDERING OR CONSTRUCTION.

REFER TO CIVIL DRAWINGS FOR SITE SERVICING AND GRADING.

EXISTING TREE REMOVAL / CONSERVATION NOTE:

REFER TO PREVIOUS LANDSCAPE PLANS FROM 2019 BY LASHLEY + ASSOCIATES, FILE # D07-12-17-0119 FOR ORIGINAL TREE INVENTORIES, REMOVAL AND CONSERVATION.

REFER ALSO TO THE AMENDMENTS TO TREE CONSERVATION FILE # D06-01-17-0137 BY RUHLAND & ASSOCIATES DATED DECEMBER 11, 2019, ADDRESSED TO MR. MARK RICHARDSON.

owner
Kanata Mosque
351 Sandhill Road
Kanata, ON

architect
Studio Senbel, a+d inc.
#125-1085 East Kent Ave. N
Vancouver, B.C. V5X 4V9
t: 604.605.6995 f: 604.605.6993
sww@studiosenbel.com

landscape architect
Ruhland & Associates Ltd
landscape architecture • urban design • site planning
Ph: 613-224-4244 Fx: 613-224-1131 info@rala.ca www.rala.ca

GENERAL NOTES

- All general site information and conditions compiled from existing plans, surveys and consultant's field notes. Report all discrepancies prior to any work. No responsibility is born by the Consultant for unknown subsurface conditions.
- The location of the utilities is approximate only, and the exact location should be determined by consulting the municipal authorities and utility companies concerned. The Contractor shall prove the location of utilities and shall be responsible for adequate protection from damage.
- All dimensions shown are to be verified on site prior to any construction. No deviations are to be made from the layouts as shown on this plan without prior consultation with the Landscape Architect and Owner.
- Obtain approval of the Consultant(s) for granular base and layout of all pavement areas prior to construction.
- Stake planting locations and receive approval of Landscape Architect, prior to excavation of any planting pits. No substitutions of plant material shall be made without prior approval of the Landscape Architect.
- Where clay is encountered proper drainage must be ensured in tree/shrub pits, prior to planting. Have method approved by Landscape Architect.
- Maintain positive surface runoff through the entire construction period.
- Reinstate all areas and items damaged as a result of construction activities.

6			
5			
4			
3			
2			
1	Issued for Site Plan Control	2022/02/18	AA

DESIGNED BY / CONCI PAR AA / MR	CHECKED BY / VERIFIE PAR MR
DRAWN BY / DESINE PAR TF	SCALE / ECHELLE 1:250
ARCHITECT	CONSULTANT
CONSULTANT	CONSULTANT

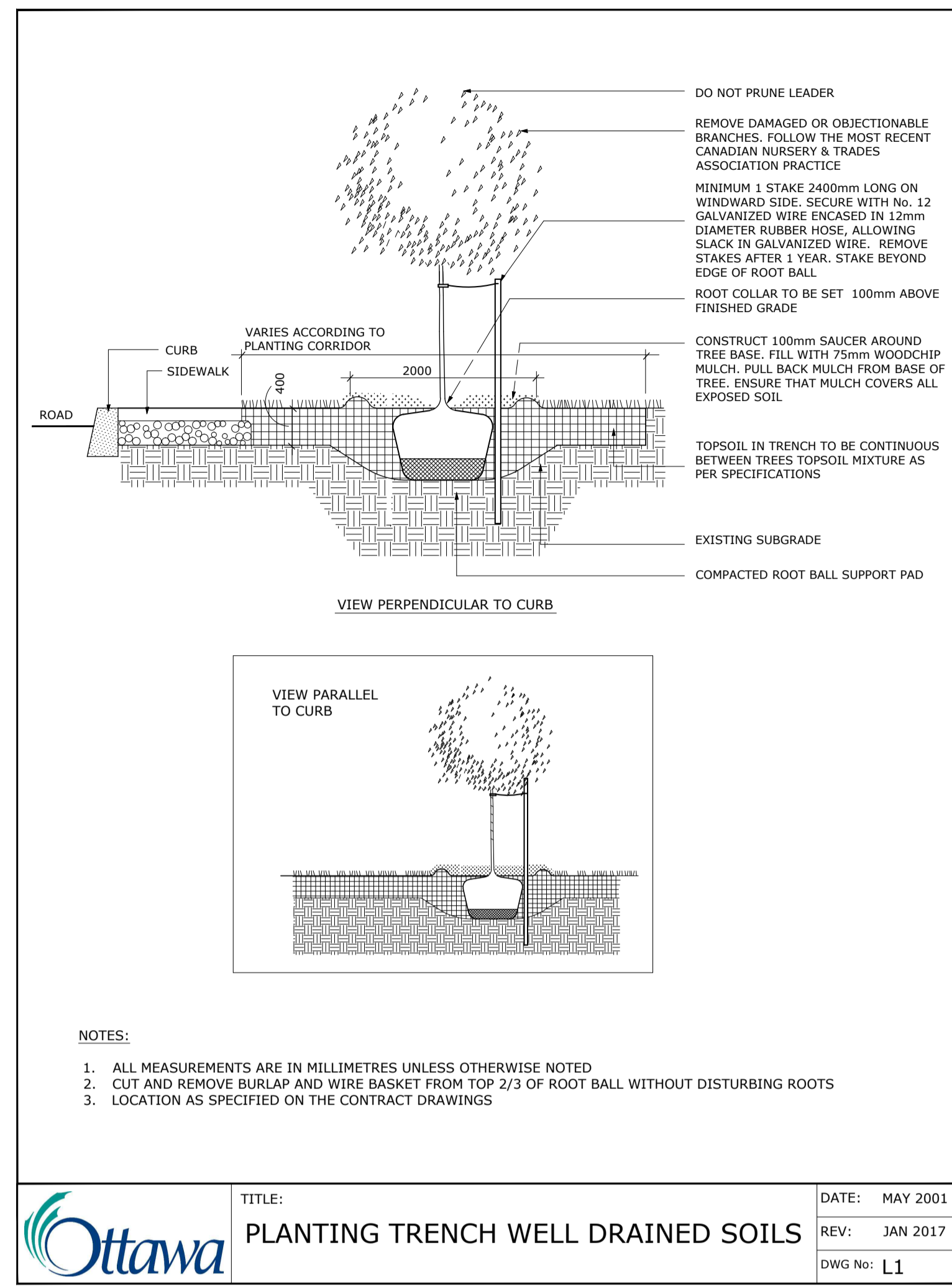
PROJECT / LOCATION
KANATA MOSQUE PHASE 2

351 SANDHILL ROAD,
OTTAWA, ONTARIO

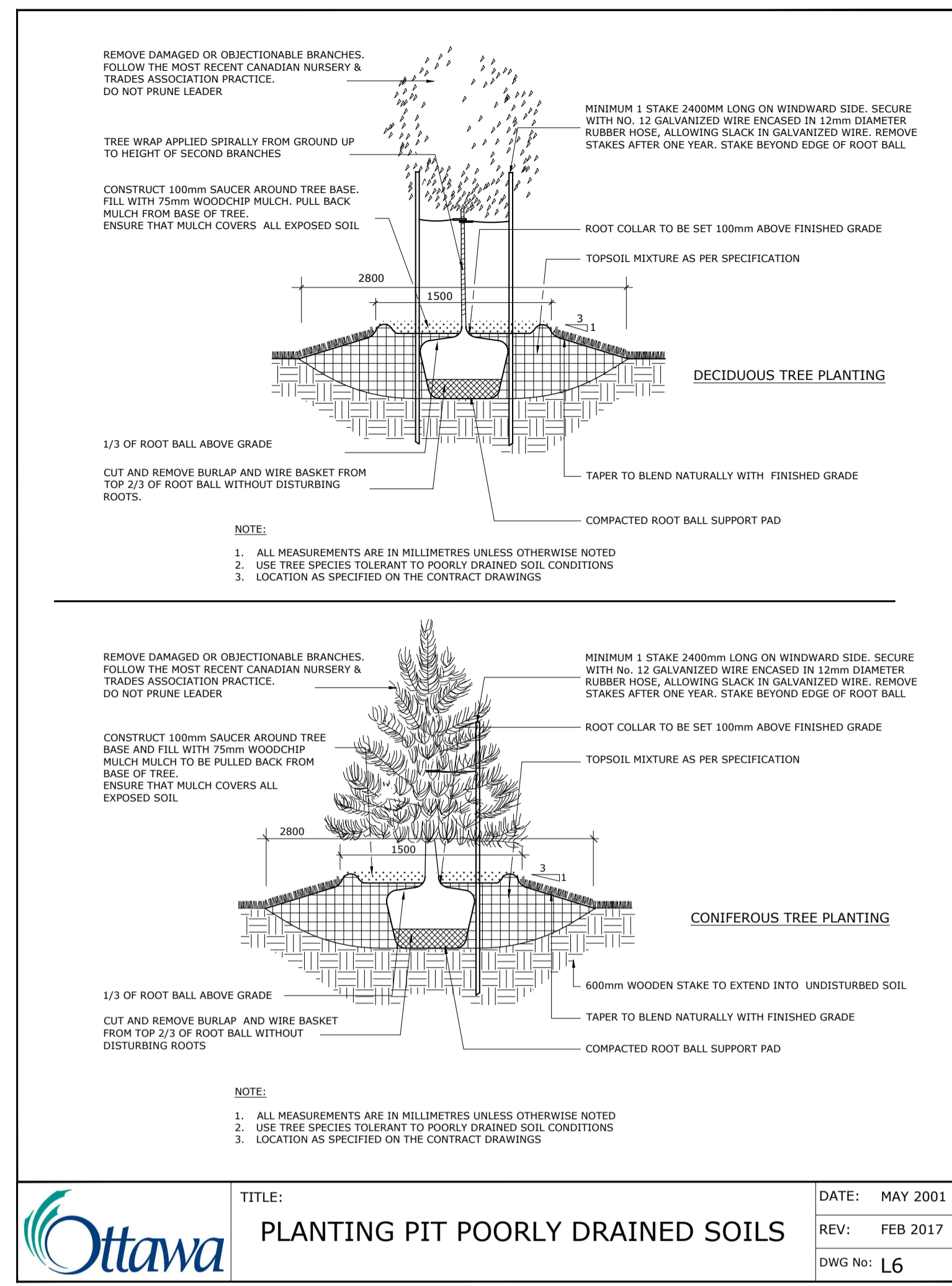
LANDSCAPE / PLANTING PLAN

PROJECT NO.
21-1664

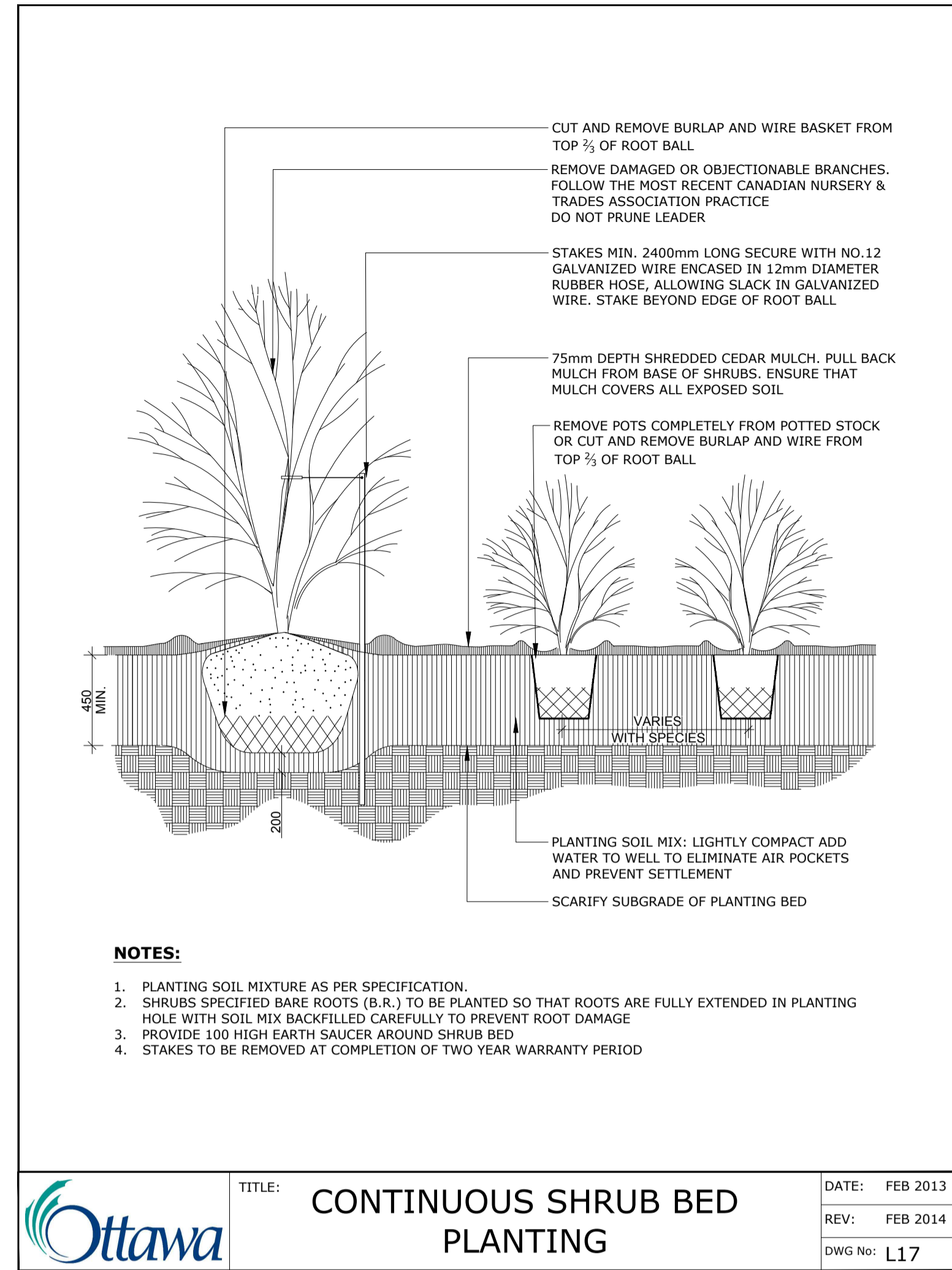
SHEET NO.
L - 01



Ottawa TITLE: PLANTING TRENCH WELL DRAINED SOILS DATE: MAY 2001
REV: JAN 2017
DWG No: L1



Ottawa TITLE: PLANTING PIT POORLY DRAINED SOILS DATE: MAY 2001
REV: FEB 2017
DWG No: L6



Ottawa TITLE: CONTINUOUS SHRUB BED PLANTING DATE: FEB 2013
REV: FEB 2014
DWG No: L17

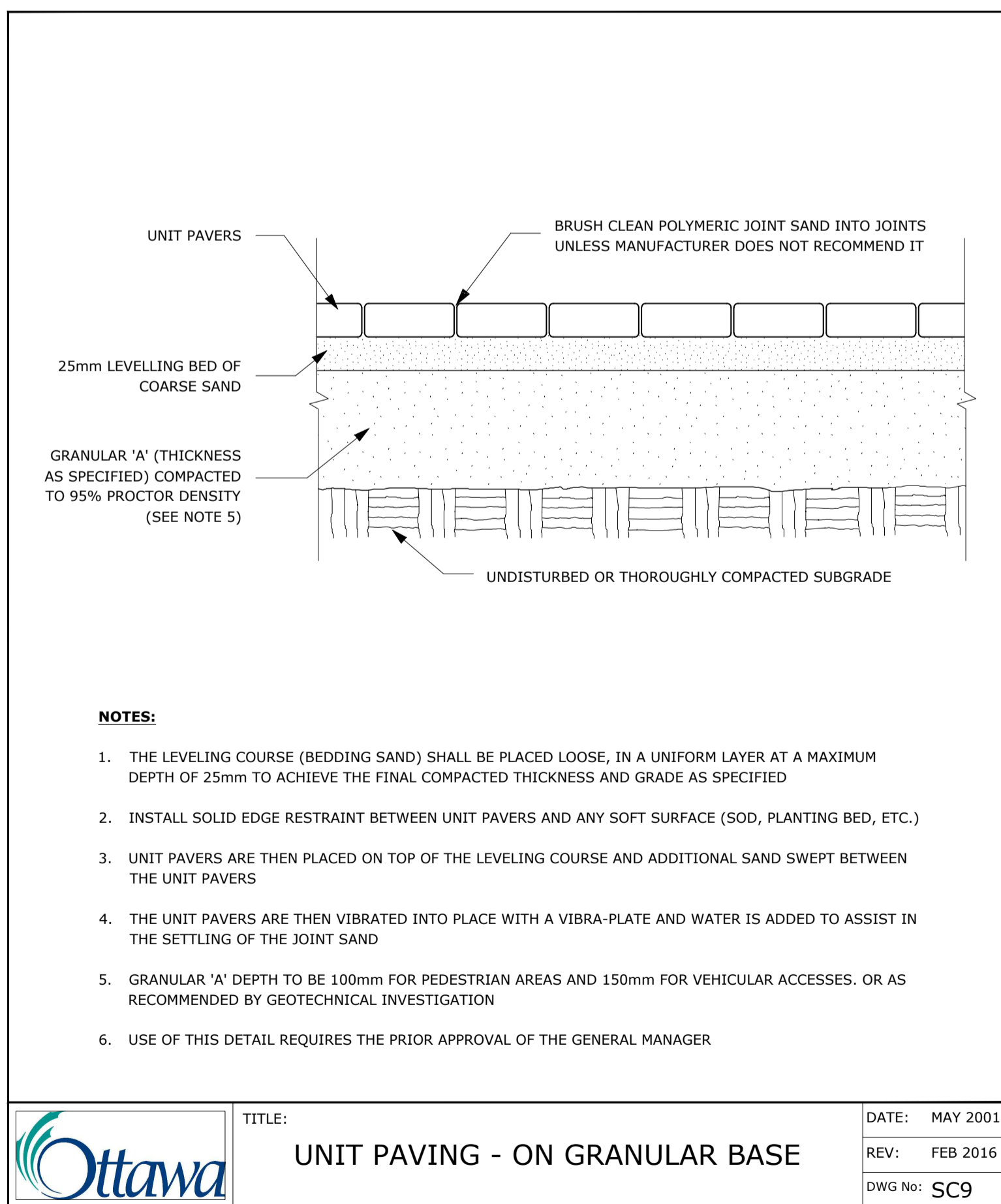
NOTES:

TREES ARE TO BE INSTALLED AS PER CITY STANDARD DETAILS; SOIL VOLUME AS PER BELOW NOTES AND MATRIX ON SHEET L-01.

- STANDARD TREE SOIL VOLUMES QUANTITIES INCLUDE THE TOP 900-1000mm OF SOIL/EXISTING SUBSOIL LAYER TO CALCULATE TOTAL SOIL VOLUMES REQUIRED BY THE CITY OF OTTAWA FOR SUSTAINABLE TREE GROWTH. WHERE LARGER SOFT AREAS ARE AVAILABLE, THE TOP 400-500mm LAYER IS USED TO CALCULATE SOIL VOLUMES.

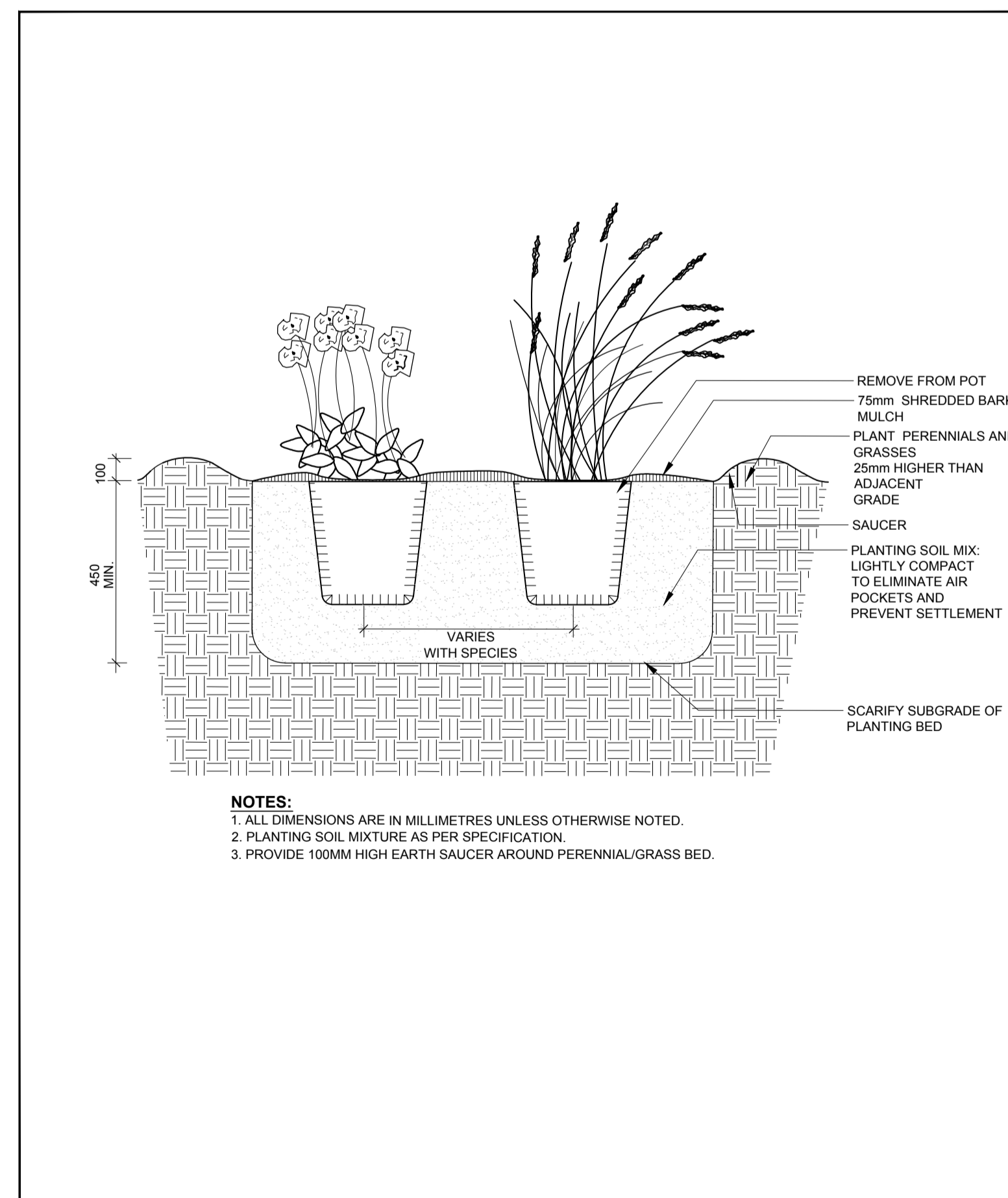
- WHERE EXISTING MATERIAL BELOW THE SPECIFIED TOPSOIL IS NOT CONDUCIVE TO TREE GROWTH, AN ADDITIONAL LAYER OF PLANTING MEDIUM IS TO BE INSTALLED BELOW SPECIFIED TOPSOIL DEPTH TO OBTAIN THE SOIL VOLUME DEPTH REQUIRED.

- REFER TO SOIL VOLUME MATRIX AND PLANS FOR AREA WHERE TREE SOIL VOLUMES ARE REQUIRED.



Ottawa TITLE: UNIT PAVING - ON GRANULAR BASE DATE: MAY 2001
REV: FEB 2016
DWG No: SC9

ADDITIONAL NOTES FOR NUMBER 5: PRECAST PAVERS IN PEDESTRIAN AREAS WHERE NORMAL SNOW REMOVALS ARE DONE IS TO RECEIVE A MINIMUM 200mm GRANULAR 'A'. FURTHER ADJUSTMENTS TO BE SPECIFIED IN RELATION TO SITE CONDITIONS AND GEOTECHNICAL RECOMMENDATIONS.



Ottawa TITLE: PERENNIAL AND ORNAMENTAL GRASS PLANTING DATE: JAN 2015
REV: DWG No: L21

owner
Kanata Mosque
351 Sandhill Road
Kanata, ON

architect
Studio Senbel, a+d inc.
#125-1085 East Kent Ave. N
Vancouver, B.C. V5X 4V9
t: 604.605.6995 f: 604.605.6993
sww@studiosenbel.com

landscape architect

Ruhland & Associates Ltd
landscape architecture • urban design • site planning
Ph 613-224-4244 Fx 613-224-1131 info@rala.ca www.rala.ca

6			
5			
4			
3			
2			
1	Issued for Site Plan Control	2022/02/18	AA
NUMBER / MILESTONE / FAIT SALLANT	(Y/M/D)	(DATE)	(INITIALS)
DESIGNED BY / CONDU PAR	AA / MR	CHECKED BY / VERIFIE PAR	MR
DRAWN BY / DESINE PAR	TF	SCALE / ECHELLE	
ARCHITECT		CONSULTANT	
CONSULTANT		CONSULTANT	

PROJECT / LOCATION
KANATA MOSQUE PHASE 2

351 SANDHILL ROAD,
OTTAWA, ONTARIO

LANDSCAPE DETAILS

SHEET NO.
L - 02

PROJECT NO.
21-1664