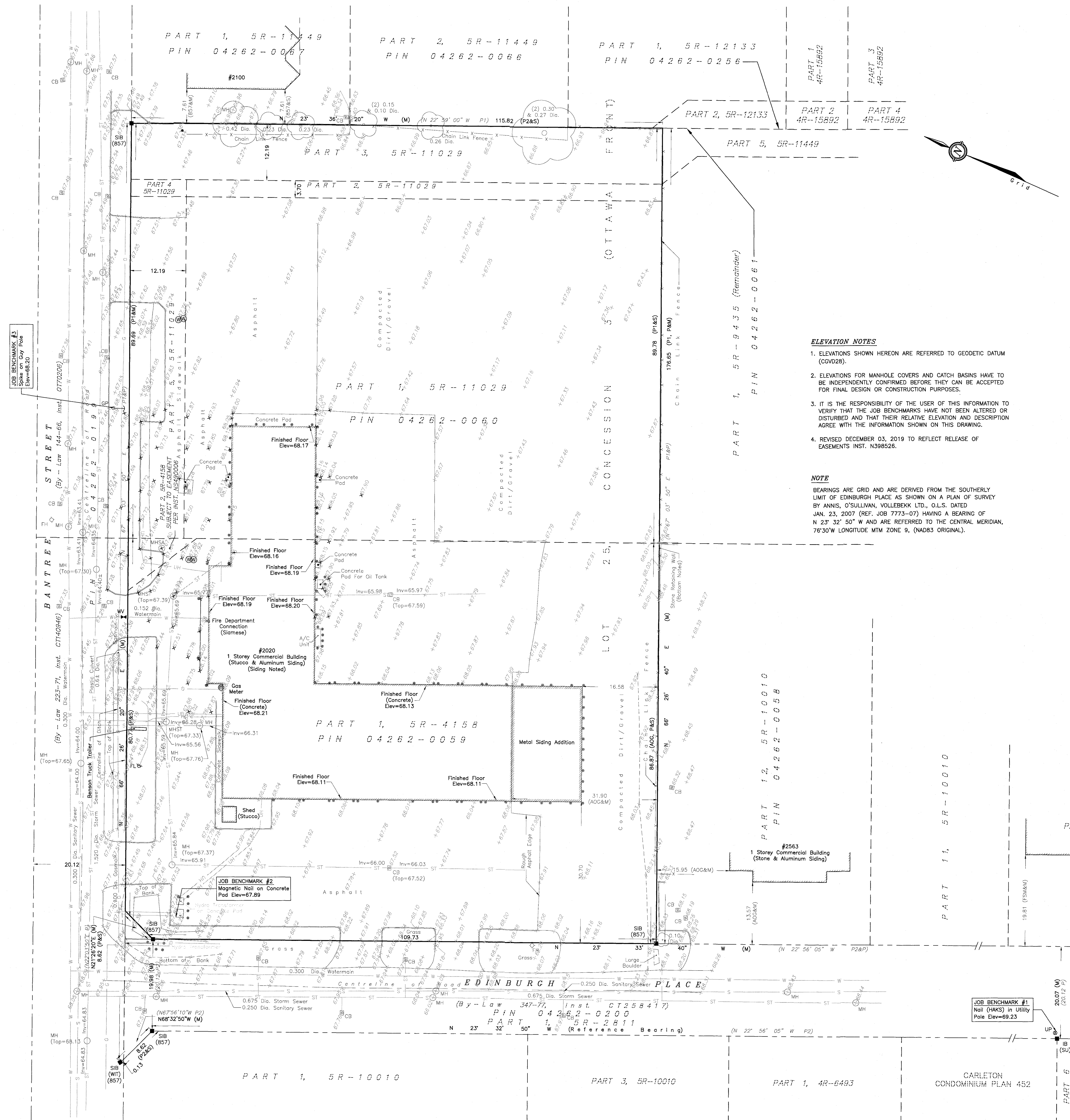


**METRIC**  
DISTANCES AND ELEVATIONS SHOWN ON THIS PLAN ARE IN METRES  
AND CAN BE CONVERTED TO FEET BY DIVIDING BY 0.3048

TOPOGRAPHIC SURVEY OF  
PART OF LOT 25  
CONCESSION 3 (OTTAWA FRONT)  
GEOGRAPHIC TOWNSHIP OF GLOUCESTER  
Now CITY OF OTTAWA  
SCALE 1 : 400  
0 10 20 40 metres  
**FAIRHALL, MOFFATT & WOODLAND LIMITED**  
ONTARIO LAND SURVEYORS



**UTILITY NOTES**

- THIS DRAWING CANNOT BE ACCEPTED AS ACKNOWLEDGING ALL OF THE UNDERGROUND UTILITIES AND IT WILL BE THE RESPONSIBILITY OF THE USER TO CONTACT THE RESPECTIVE UTILITY AUTHORITIES FOR CONFIRMATION OR LOCATION.
- UNDERGROUND UTILITIES, AS REPORTED ON THIS DRAWING, ARE BASED ON AN ACTUAL 'FIELD LOCATE' BY THE RESPECTIVE UTILITY AGENCIES OR HAVE BEEN COMPILED FROM DATA OBTAINED FROM THE FOLLOWING SOURCES:
  - a) CITY OF OTTAWA PUBLIC UTILITIES REGISTRY
  - b) UNDERGROUND SERVICE LOCATORS USL-1
- BEFORE ANY WORK INVOLVING PROBING, EXCAVATING, ETC., A FIELD LOCATION OF UNDERGROUND PLANT BY THE PERTINENT UTILITY AUTHORITY IS MANDATORY.

**ELEVATION NOTES**

- ELEVATIONS SHOWN HEREON ARE REFERRED TO GEODETIC DATUM (CGVD28).
- ELEVATIONS FOR MANHOLE COVERS AND CATCH BASINS HAVE TO BE INDEPENDENTLY CONFIRMED BEFORE THEY CAN BE ACCEPTED FOR FINAL DESIGN OR CONSTRUCTION PURPOSES.
- IT IS THE RESPONSIBILITY OF THE USER OF THIS INFORMATION TO VERIFY THAT THE JOB BENCHMARKS HAVE NOT BEEN ALTERED OR DISTURBED AND THAT THEIR RELATIVE ELEVATION AND DESCRIPTION AGREE WITH THE INFORMATION SHOWN ON THIS DRAWING.
- REVISED DECEMBER 03, 2019 TO REFLECT RELEASE OF EASEMENTS INST. N398526.

**NOTE**  
BEARINGS ARE GRID AND ARE DERIVED FROM THE SOUTHERLY LIMIT OF EDINBURGH PLACE AS SHOWN ON A PLAN OF SURVEY BY ANNIS, O'SULLIVAN, VOLLEBECK LTD., O.L.S. DATED JAN. 23, 2007 (REF. JOB 7773-07) HAVING A BEARING OF N 23° 32' 50" W AND ARE REFERRED TO THE CENTRAL MERIDIAN, 76°30'W LONGITUDE MTM ZONE 9, (NAD83 ORIGINAL).

**LEGEND**

■	SURVEY MONUMENT FOUND	○ GP	GUY POLE
SIB	STANDARD IRON BAR	⊕ WV	WATER VALVE
IB	IRON BAR	○	CONDUIT
(P)	PLAN SR-4158	⊖	GUY WIRE AND ANCHOR
(P1)	PLAN SR-11029	●	BOLLARD
(P2)	PLAN SR-10010	⊙	SIGN
(M)	MEASURED	⊕	DECIDUOUS TREE
(S)	SET	— W —	WATERMAIN
(857)	FAIRHALL, MOFFATT & WOODLAND LIMITED, O.L.S.	— — —	OVERHEAD UTILITY WIRES
(A0G)	ANNIS, O'SULLIVAN, VOLLEBECK LTD., O.L.S. (REF. JOB 7773-07 & JOB 10408-09)	— UH —	UNDERGROUND HYDRO
(FSM)	FARLEY, SMITH & MURRAY SURVEYING LTD., O.L.S. (REF. JOB 12-87)	— UB —	UNDERGROUND BELL
(HAKS)	H. A. KEN SHIPMAN SURVEYING LTD., O.L.S. (REF. GL-455)	— G —	GAS MAIN
PIN	PROPERTY IDENTIFIER NUMBER	— ST —	STORM SEWER
(SU)	SOURCE UNKNOWN	— S —	SANITARY SEWER
(WIT)	WITNESS	— C —	CURB
DIA.	DIAMETER		
INV.	INVERT		
PIN	PROPERTY IDENTIFIER NUMBER		
CB	CATCH BASIN		
MH	MANHOLE		
LS	LAMP STANDARD		
FL	FLOOD LITE		
FH	FIRE HYDRANT		
UP	UTILITY POLE		

**SURVEYOR'S CERTIFICATE**

I CERTIFY THAT:

- THIS SURVEY AND PLAN ARE CORRECT AND IN ACCORDANCE WITH THE SURVEYS ACT, THE SURVEYORS ACT, THE LAND TITLES ACT AND THE REGULATIONS MADE UNDER THEM.
- THE SURVEY WAS COMPLETED ON AUGUST 19, 2021.

201/08/27  
DATE

JOHN H. GUTHRIE  
ONTARIO LAND SURVEYOR

© COPYRIGHT 2021. REPRODUCTION, ALTERATION OR DISTRIBUTION OF THIS PLAN WITHOUT THE WRITTEN CONSENT OF FAIRHALL, MOFFATT & WOODLAND LIMITED IS PROHIBITED.

ASSOCIATION OF ONTARIO LAND SURVEYORS  
PLAN SUBMISSION FORM  
2050448

THIS PLAN IS NOT VALID UNLESS IT IS AN EMBOSSED ORIGINAL COPY ISSUED BY THE SURVEYOR IN ACCORDANCE WITH REGULATION 1022E, SECTION 29 (3).

REVISION\_2: AUGUST 25, 2021  
UPDATED TO SHOW CHANGES ON SITE  
REVISION: DECEMBER 14, 2020  
UPDATED SITE SURVEY ON-GOING CONSTRUCTION

**Fairhall  
Moffatt &  
Woodland**  
OTTAWA  
SURVEYING AND LAND INFORMATION SERVICES  
100-600 TERRY FOX DRIVE, KANATA, ONTARIO K2L 4B8  
TEL: (613) 591-2290 FAX: (613) 591-1495  
www.fmw.on.ca

JOB No. Y 17400  
E 374295, N 5029819  
REFERENCE No. 157 - 3 (OF) GR

FAIRHALL, MOFFATT & WOODLAND LIMITED  
100-600 TERRY FOX DRIVE, KANATA, ONTARIO K2L 4B8  
TEL: (613) 591-2290 FAX: (613) 591-1495  
www.fmw.on.ca