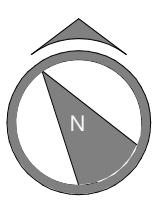


PROJECT NORTH

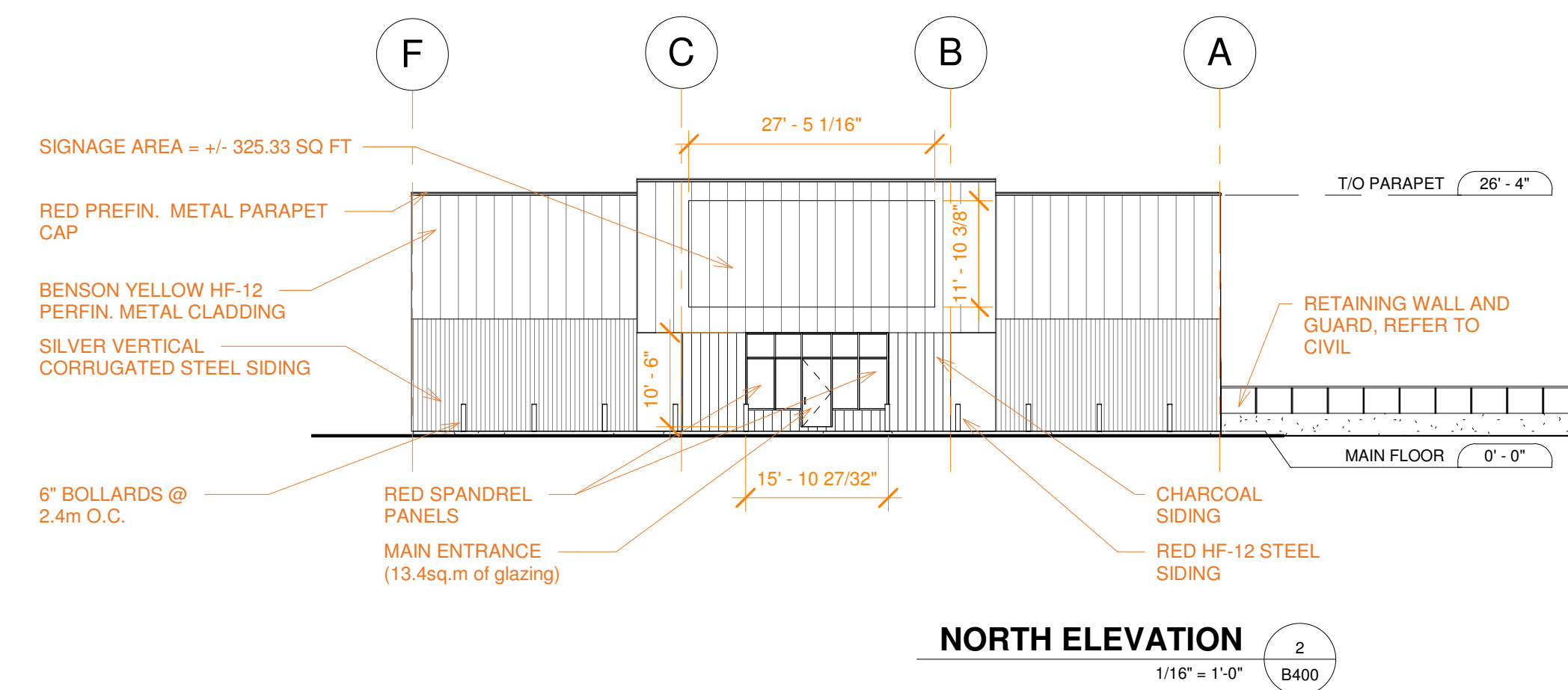
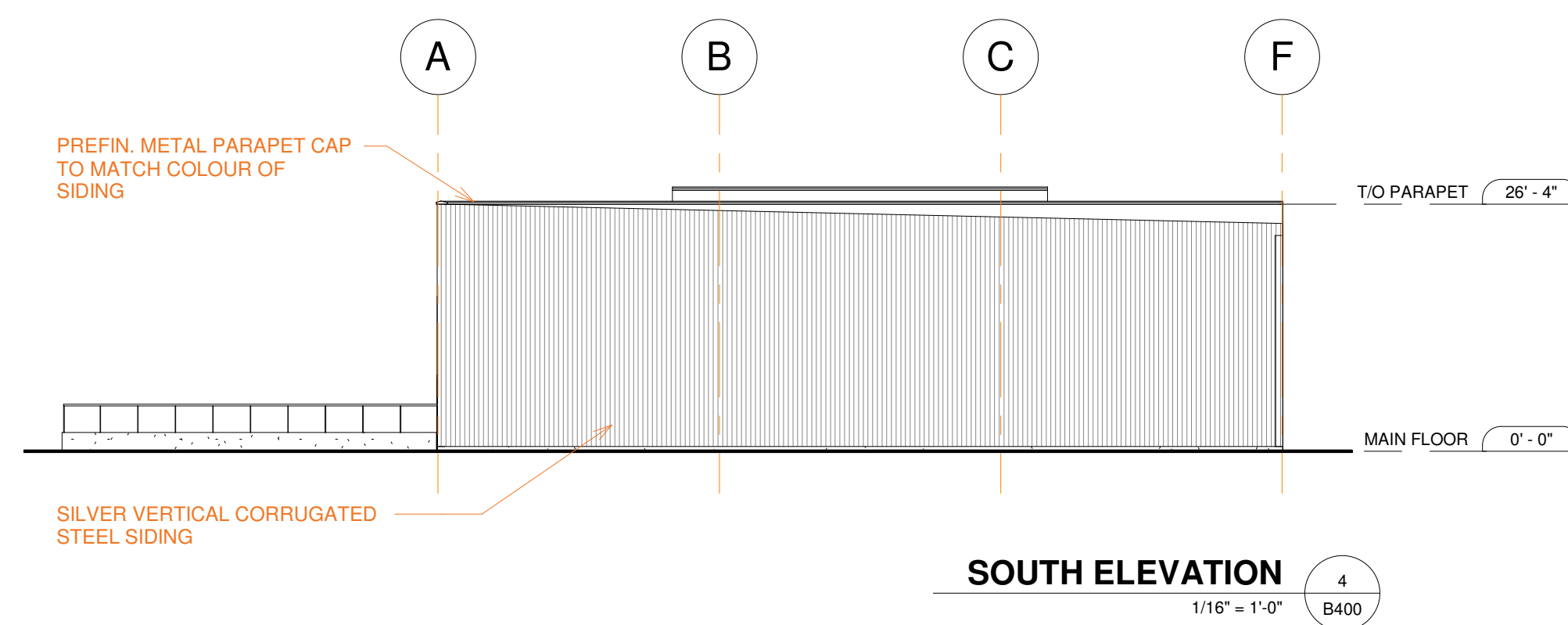
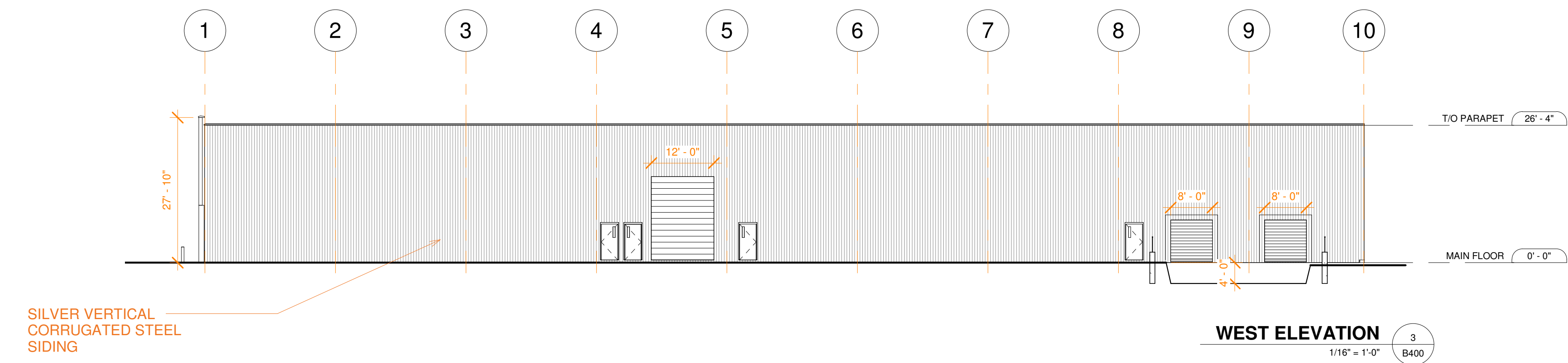
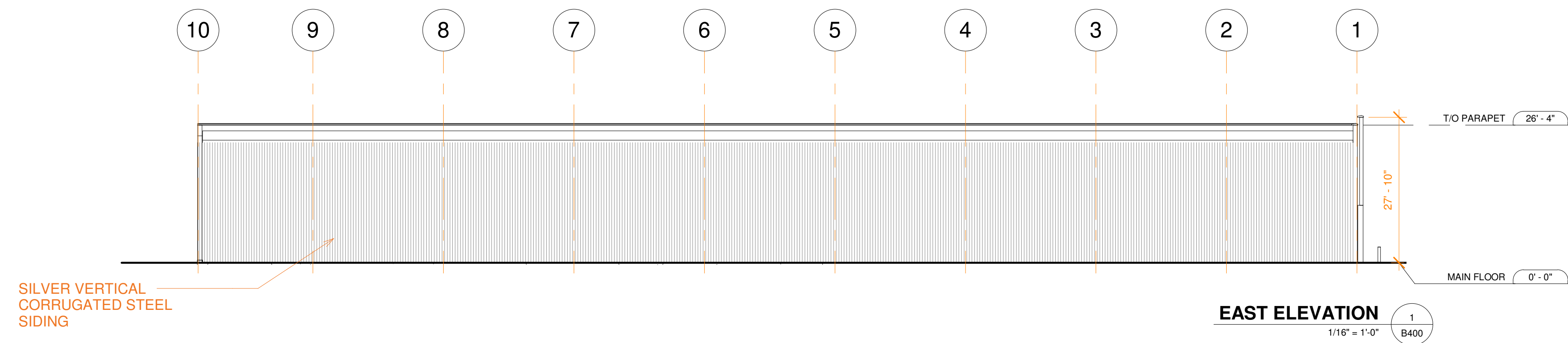


- BUILDING CODE/ZONING REVIEW**
- BUILDING AREA 20,000 SQ. FT (1858.06 SQ. M)
 - FACING 1 STREET
 - NON-SPRINKLERED
 - COMBUSTIBLE CONST. PERMITTED

IH - HEAVY INDUSTRIAL ZONE

PERMITTED USE - WAREHOUSING WITH ACCESSORY DISPLAY AND SALES AREA

AREA OF DISPLAY AREA = 2910.21 SF (14.9% OF TOTAL GROSS FLOOR AREA)



DE SAULNIERS CONSTRUCTION LTD.
1120 MARLEAU AVE. CORNWALL, ON, K6H 2W6
T (613) 937-0016 | F (613) 937-3897
DCLIMITED.CA

DISCLAIMER: THIS DRAWING / DESIGN ARE COPYRIGHT PROTECTED AND SHALL NOT BE COPIED, USED, OR REVISED WITHOUT WRITTEN PERMISSION. ALL DIMENSIONS, UTILITY LOCATIONS ARE TO BE CHECKED BY THE CONTRACTOR AND SHALL BE REPORTED AS WELL AS ALL ERRORS AND OMISSIONS PRIOR TO START OF WORK. DO NOT SCALE DRAWINGS.

IS	RE	DATE	DESCRIPTION
3	1	AUG-26-2021	ISSUED FOR SITE PLAN APPROVAL
2	1	JUN-28-2021	REVISED FOR SIGNAGE PERMIT
1	2	FEB-17-2021	ISSUED FOR REVIEW
1	1	JAN-12-2021	ISSUED FOR REVIEW

BENSON GROUP
2020 BANTREE ST, OTTAWA, ONTARIO

BANTREE AUTO PARTS

ELEVATIONS

DRAWN BY: Author
CHECKED BY: Checker
PROJECT NO: C1805.005

B400