

PAVING SCHEDULE					
KEY	TYPE	NAME	MANUFACTURER	COLOR	PATTERN/FINISH
P1	Concrete Unit Paving	Interlock	Unicolor	White/Marble	Running Bond
P2	Concrete Unit Paving	Interlock	Unicolor	Steel Grey/Brown	Running Bond
P3	Concrete Unit Paving	Interlock	Unicolor	Light Sand/Beige	Running Bond
P4	Grass	Grass	Grass	Grass	Grass
P5	Artificial Grass	Grass	Grass	Grass	Grass

FURNISHING SCHEDULE					
KEY	QTY	TYPE	MANUFACTURER	MODEL	UNIT SIZE
G1	1	Garbage Can	Landscaping Forms	Grey Can	450 x 300
G2	1	Recycling Bin	Landscaping Forms	Grey Can	450 x 300
G3	1	Bin	Landscaping Forms	Grey Can	450 x 300
G4	1	Bin	Landscaping Forms	Grey Can	450 x 300
G5	1	Bin	Landscaping Forms	Grey Can	450 x 300
G6	1	Bin	Landscaping Forms	Grey Can	450 x 300
G7	1	Bin	Landscaping Forms	Grey Can	450 x 300
G8	1	Bin	Landscaping Forms	Grey Can	450 x 300
G9	1	Bin	Landscaping Forms	Grey Can	450 x 300
G10	1	Bin	Landscaping Forms	Grey Can	450 x 300

LIGHTING SCHEDULE					
KEY	TYPE	NAME	MANUFACTURER	MODEL	UNIT SIZE
L1	Post Mounted	Post Mounted	Post Mounted	Post Mounted	Post Mounted
L2	Post Mounted	Post Mounted	Post Mounted	Post Mounted	Post Mounted
L3	Post Mounted	Post Mounted	Post Mounted	Post Mounted	Post Mounted
L4	Post Mounted	Post Mounted	Post Mounted	Post Mounted	Post Mounted
L5	Post Mounted	Post Mounted	Post Mounted	Post Mounted	Post Mounted

PLANTING SCHEDULE					
KEY	QTY	TYPE	MANUFACTURER	MODEL	UNIT SIZE
P1	1	Plant	Plant	Plant	Plant
P2	1	Plant	Plant	Plant	Plant
P3	1	Plant	Plant	Plant	Plant
P4	1	Plant	Plant	Plant	Plant
P5	1	Plant	Plant	Plant	Plant

PERENNIALS/ORNAMENTAL GRASSES					
KEY	QTY	TYPE	MANUFACTURER	MODEL	UNIT SIZE
G1	1	Grass	Grass	Grass	Grass
G2	1	Grass	Grass	Grass	Grass
G3	1	Grass	Grass	Grass	Grass
G4	1	Grass	Grass	Grass	Grass
G5	1	Grass	Grass	Grass	Grass

DOUGLAS JAMES, MCIP, RPP
MANAGER, DEVELOPMENT REVIEW - CENTRAL
PLANNING, INFRASTRUCTURE & ECONOMIC
DEVELOPMENT DEPARTMENT, CITY OF OTTAWA

APPROVED
By Douglas James at 1:19 pm, Jan 24, 2022

NOTE:
FOR ALL SITE GRADING, REFER TO CIVIL DRAWINGS CG1101, CG1102, CG1103
FOR ALL SITE SERVICES, REFER TO CIVIL DRAWINGS CU1101

CLIENT

Ottawa Community Housing (OCH)

39 Auriga Dr, Nepean, ON K2E 7Y8

COPYRIGHT
The drawings have been prepared solely for the intended use, and any reproduction or distribution for any other purpose without the written consent of the Group is prohibited. The Group shall not be responsible for any errors or omissions in the drawings, and the user shall be responsible for any errors or omissions in the drawings. The Group shall not be responsible for any errors or omissions in the drawings, and the user shall be responsible for any errors or omissions in the drawings.

IBI Group Architects (Canada) Inc.
is a member of the IBI Group of companies.

ISSUES	DESCRIPTION	DATE
1	ISSUED FOR DRAFT DD SUBMISSION	2020-12-07
2	ISSUED FOR DD SUBMISSION	2021-01-05
3	ISSUED FOR OCH SPC APP REVIEW	2021-05-14
4	ISSUED FOR SPC SUBMISSION	2021-05-19
5	ISSUED FOR 30% CD INTERNAL COORDINATION	2021-06-03
6	ISSUED FOR 60% CD ISSUANCE	2021-07-13
7	RE-ISSUED FOR SPC SUBMISSION	2021-08-23
8	ISSUED FOR 90% CD ISSUANCE	2021-08-24
9	ISSUED FOR BUILDING PERMIT	2021-09-07
10	ISSUED FOR TENDER	2021-10-05
11	RE-ISSUED FOR TENDER	2021-11-03
12	RE-ISSUED FOR SPC SUBMISSION	2021-11-16

KEYPLAN

HEMLOCK

BAREILLE SNOW

MIKINAK

MICHAEL STOOJOA STREET

CONSULTANTS

NOT FOR CONSTRUCTION

Soil

Conc. Unit Paving

Permeable Paving

Cast in Place Conc. Paving

Proposed OGS (Refer to civil)

Proposed Manhole (Refer to civil)

Proposed OGS (Refer to civil)

Proposed Catchbasin (Refer to civil)

Proposed Deciduous Trees

Proposed Coniferous Trees

Proposed Street Trees (N.I.C)

Hose Bib (Refer to Arch.)

SEAL

ASSOCIATION OF LANDSCAPE ARCHITECTS OF ONTARIO

PRIME CONSULTANT

IBI GROUP

Unit 110, 4500 Dufferin Avenue
Kingston, ON K7M 6N7, Canada
Tel: 613 531 4440 Fax: 613 531 7700
ibi@ibi.com

PROJECT

MIKINAK REDEVELOPMENT

715 MIKINAK ROAD, OTTAWA, ON,
CANADA K1K 2G8

PROJECT NO:

125599

DRAWN BY:

BBLL

CHECKED BY:

NK

PROJECT MGR:

NK

APPROVED BY:

NK

SHEET TITLE

LANDSCAPE LAYOUT & PLANTING PLAN

SHEET NUMBER

L100

SCALE

1:250

ISSUE

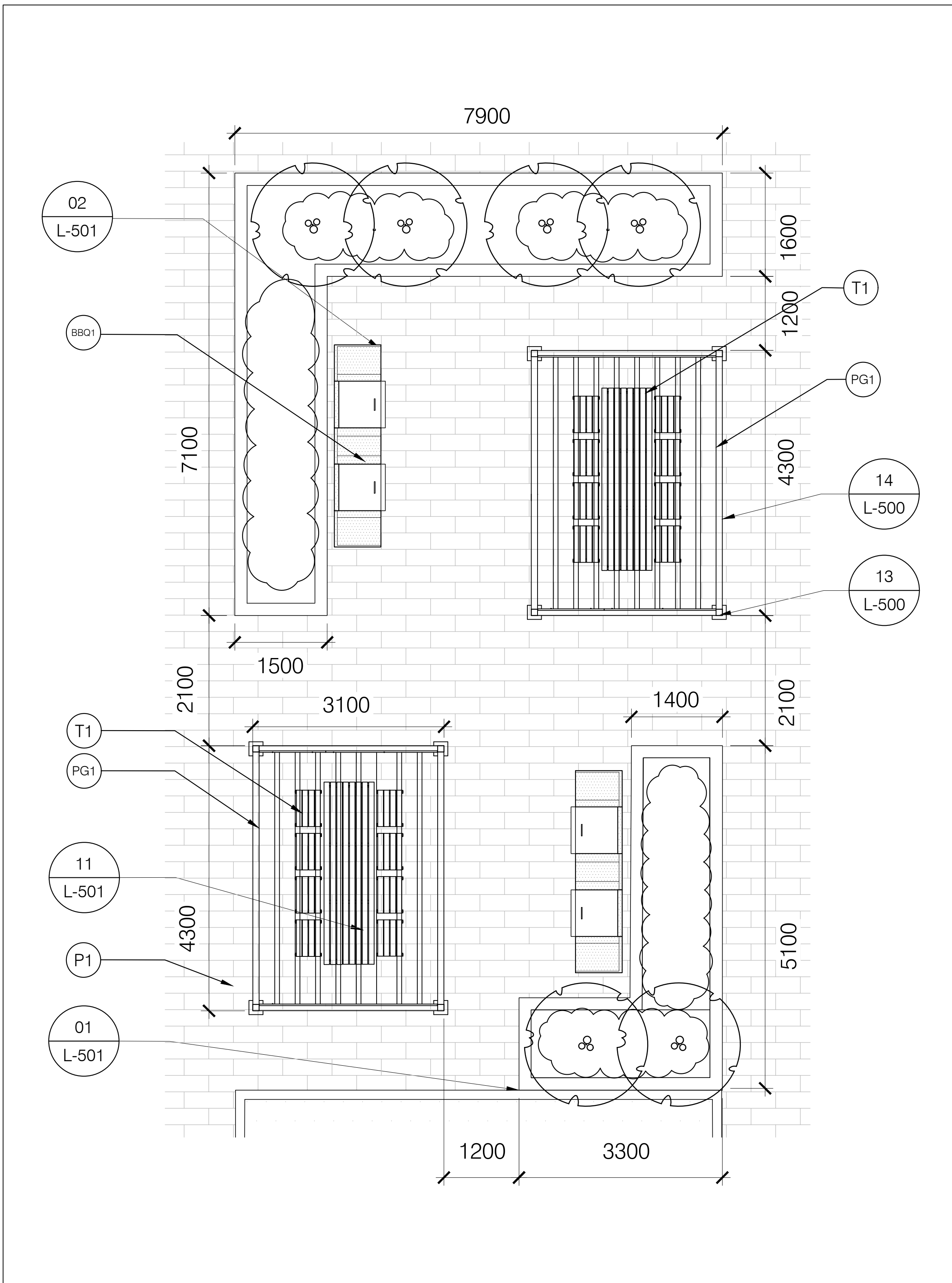
H

DATE

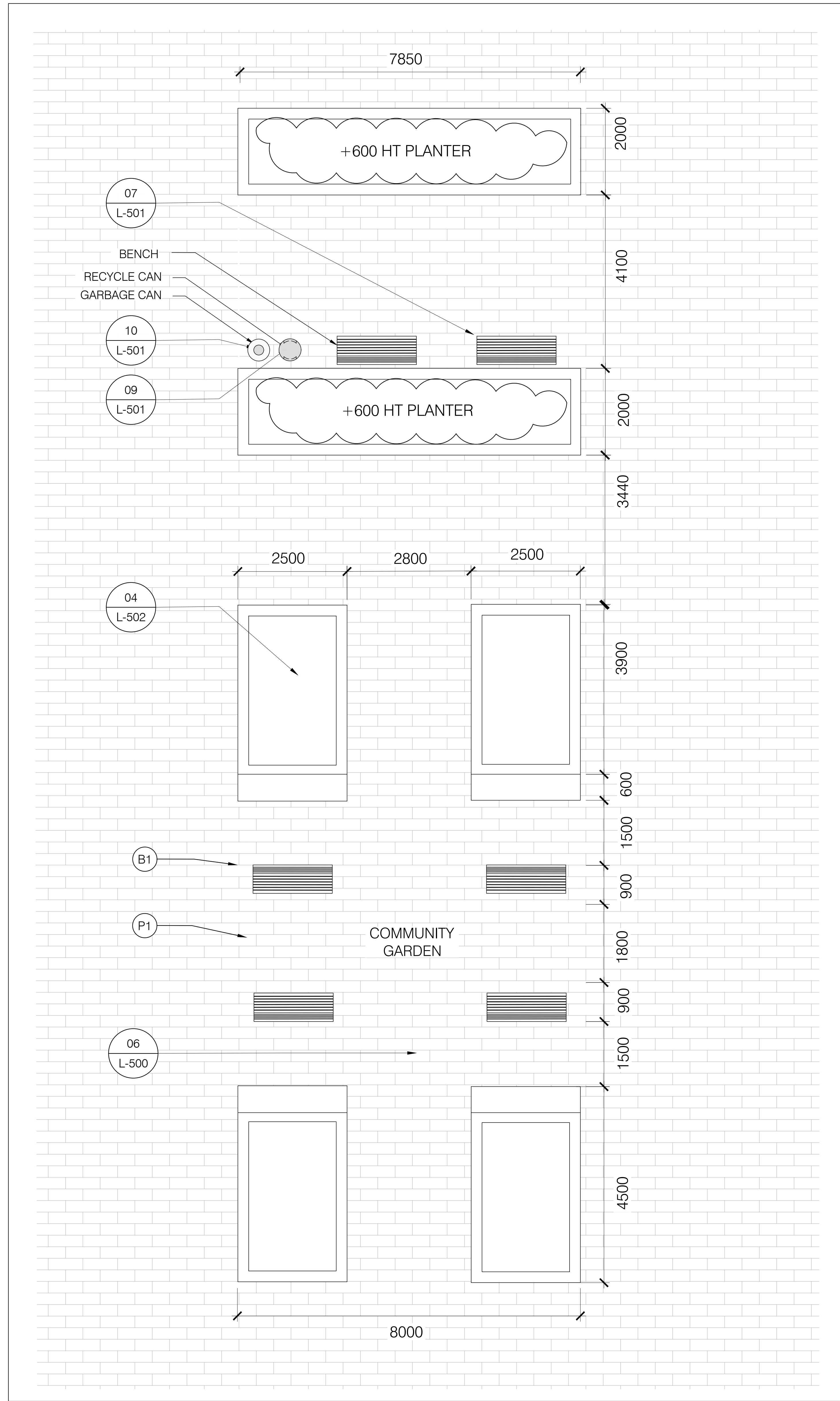
2021-12-21-0085

FILE


18454



1 OUTDOOR DINING
L-101 1:50



2 COMMUNITY GARDEN & ENTRY COURT
L-101 1:50


DOUGLAS JAMES, MCIP, RPP
MANAGER, DEVELOPMENT REVIEW - CENTRAL
PLANNING, INFRASTRUCTURE & ECONOMIC
DEVELOPMENT DEPARTMENT, CITY OF OTTAWA

APPROVED
By Douglas James at 1:20 pm, Jan 24, 2022

CLIENT

Ottawa Community Housing (OCH)



Ottawa Community Housing
39 Auriga Dr, Nepean, ON K2E 7Y8

COPYRIGHT

This drawing has been prepared solely for the intended use, and any reproduction or distribution for any other purpose without the written consent of IBI Group is prohibited. Written consent shall be obtained from IBI Group. IBI Group shall not be responsible for any errors or omissions in this drawing, and IBI Group shall not be liable for any damages or losses resulting from the use of this drawing. This drawing shall be used only for the purpose intended.

IBI Group Architects (Canada) Inc.
is a member of the IBI Group of companies.

ISSUES

No.	DESCRIPTION	DATE
1	ISSUED FOR DRAFT DD SUBMISSION	2020-12-07
2	ISSUED FOR DD SUBMISSION	2021-01-05
3	ISSUED FOR OCH SPC APP REVIEW	2021-05-14
4	ISSUED FOR SPC SUBMISSION	2021-05-19
5	ISSUED FOR 30% CD INTERNAL COORDINATION	2021-06-03
6	ISSUED FOR 60% CD ISSUANCE	2021-07-13
7	RE-ISSUED FOR SPC SUBMISSION	2021-08-23
8	ISSUED FOR 90% CD ISSUANCE	2021-08-24
9	ISSUED FOR BUILDING PERMIT	2021-09-07
10	ISSUED FOR TENDER	2021-10-05
11	RE-ISSUED FOR TENDER	2021-11-03
12	RE-ISSUED FOR SPC SUBMISSION	2021-11-16

KEYPLAN



HEMLOCK
BAREILLE-SNOW
MIKINAK
MICHAEL STODOLIA

CONSULTANTS

NOT FOR CONSTRUCTION

Conc. Unit Paving

Proposed Bench

Proposed Garbage Can

Proposed Barbecue

Proposed Pergola

Proposed Outdoor Seating

Proposed Outdoor Seating

SEAL



PRIME CONSULTANT

IBI GROUP

Unit 110-8200 Dalton Avenue
Kingston ON K7M 8N7 Canada
Tel 613 531 4440 Fax 613 531 7729
ibigroup.com

PROJECT

MIKINAK REDEVELOPMENT

715 MIKINAK ROAD, OTTAWA, ON,
CANADA K1K 2G8

PROJECT NO:

125599

DRAWN BY:

BBLL

CHECKED BY:

NK

PROJECT MGR:

NK

APPROVED BY:

NK

SHEET TITLE

LANDSCAPE LAYOUT PLAN
DETAILS

SHEET NUMBER

L-101

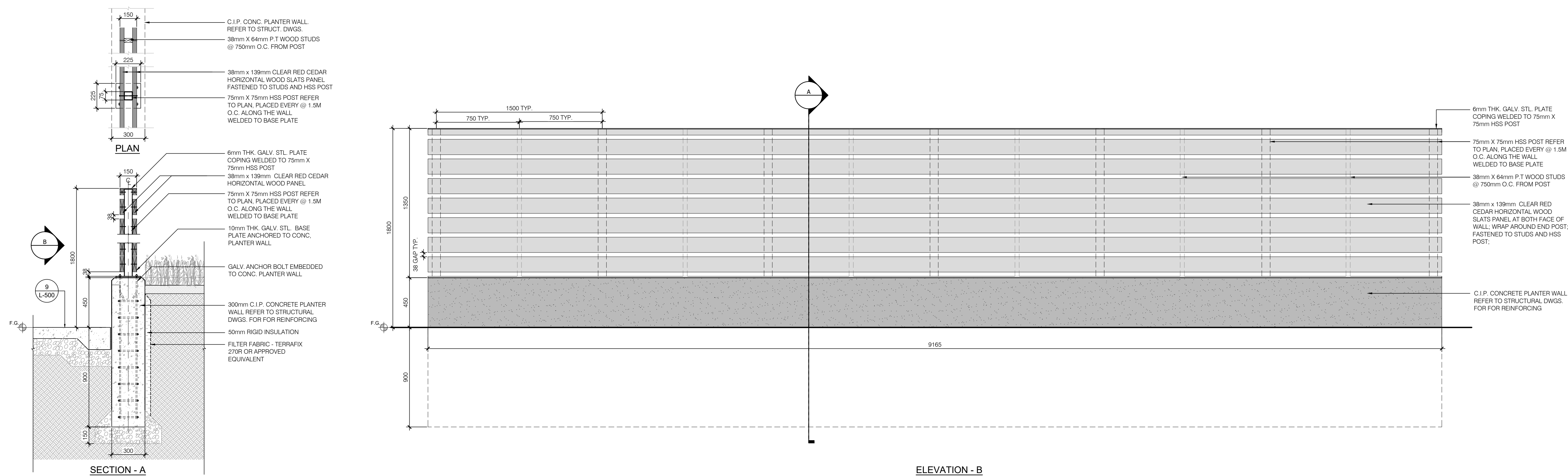
SCALE

1:50

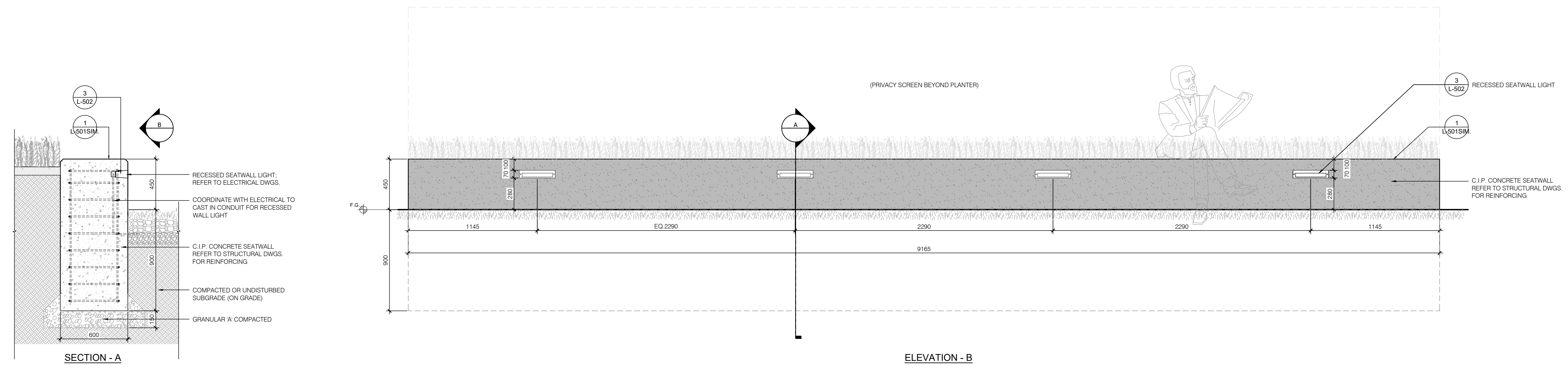
ISSUE

H

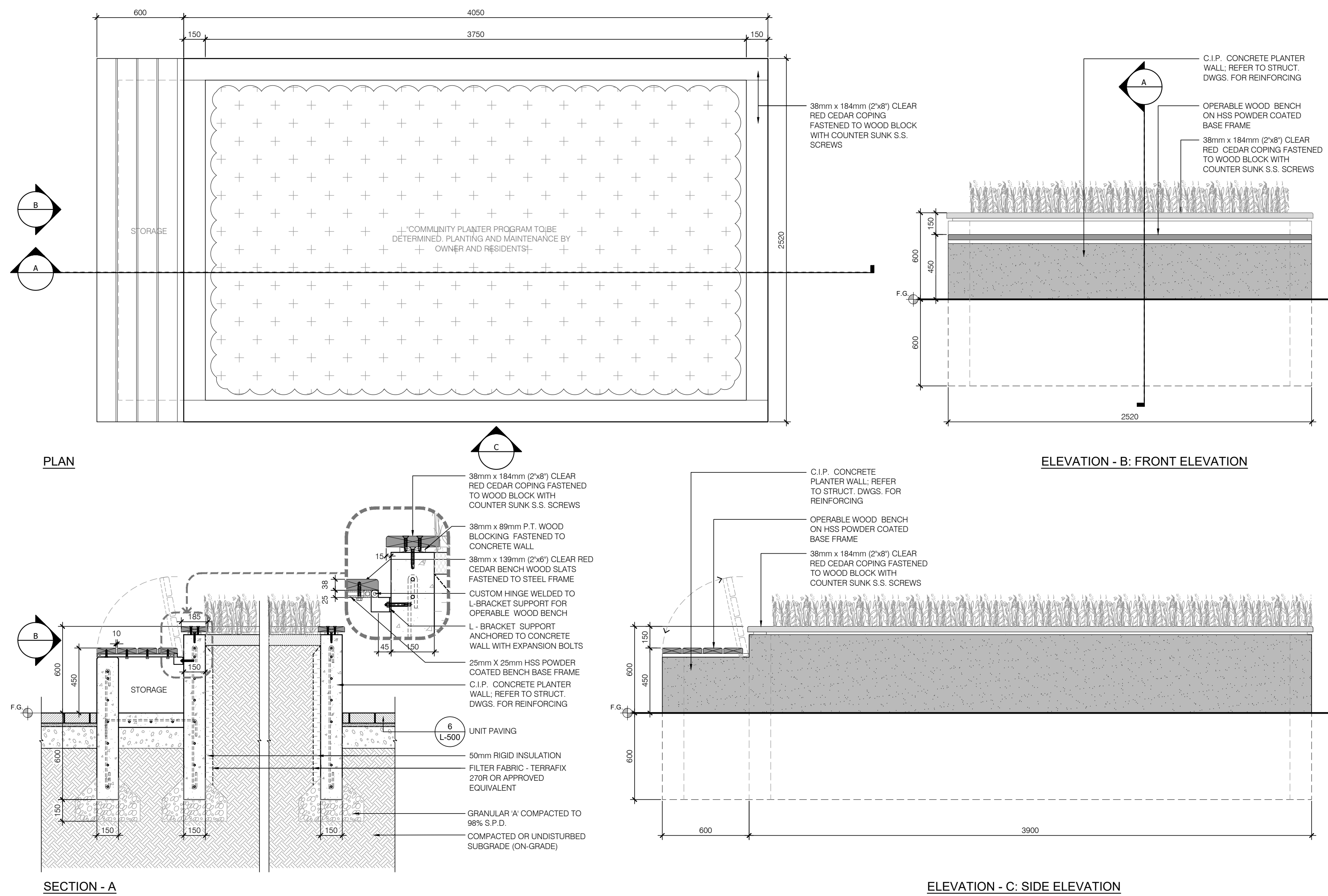
#18454
DOT-12-21-0088



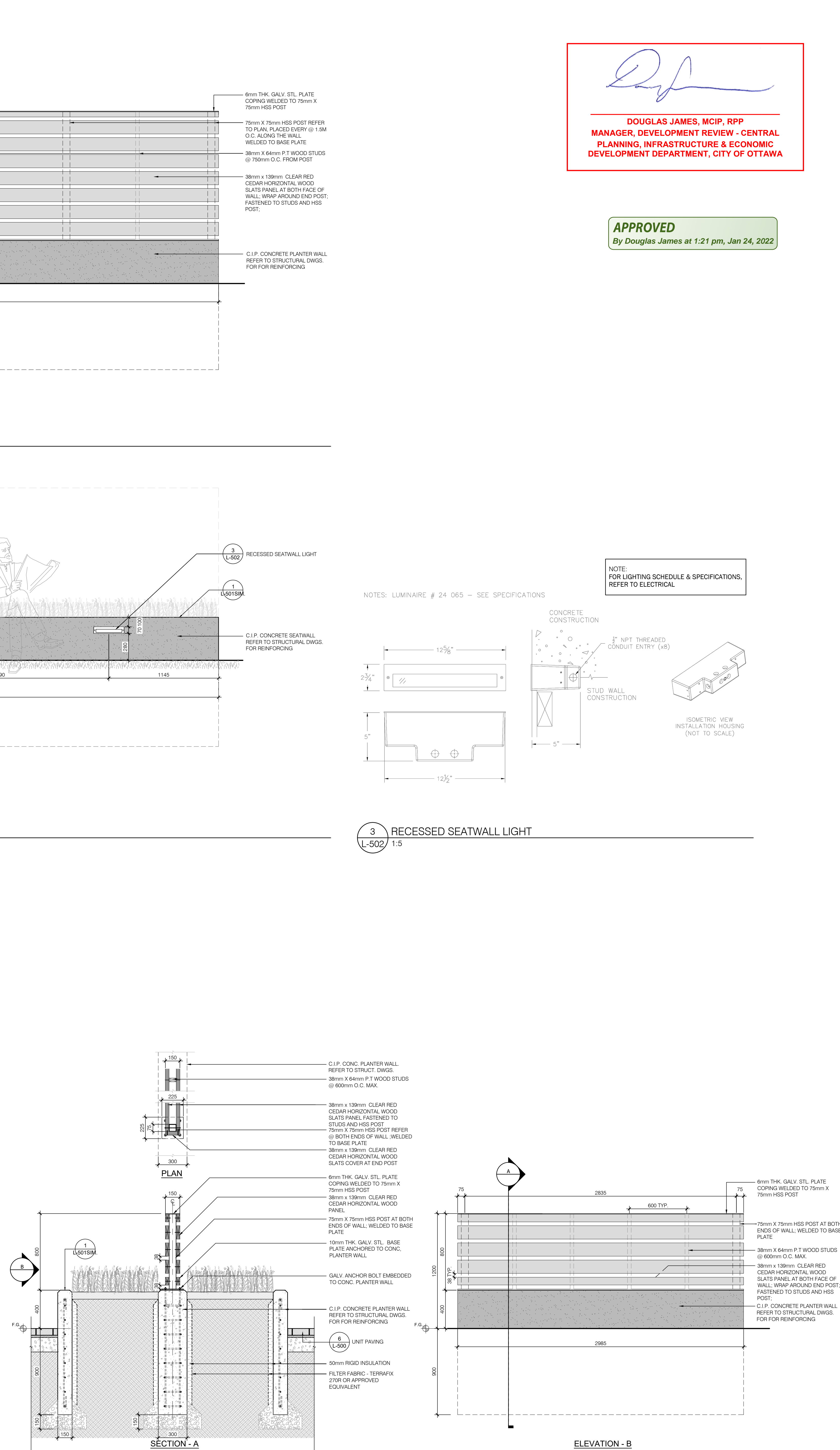
1 PRIVACY SCREEN ON PLANTER WALL
L-502 1:20



2 C.I.P. CONCRETE SEATWALL
L-502 1:20



4 COMMUNITY PLANTER WITH OPERABLE BENCH
L-502 1:20



5 PRIVACY SCREEN AND PLANTER AT PATIO
L-502 1:20

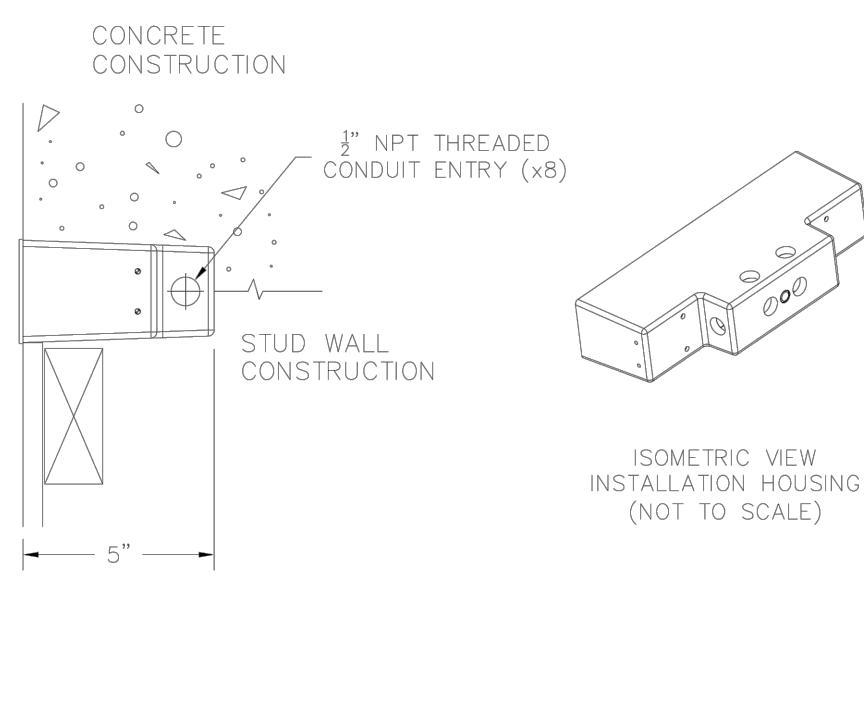
DJ

DOUGLAS JAMES, MCIP, RPP
MANAGER, DEVELOPMENT REVIEW - CENTRAL
PLANNING, INFRASTRUCTURE & ECONOMIC
DEVELOPMENT DEPARTMENT, CITY OF OTTAWA

APPROVED
By Douglas James at 1:21 pm, Jan 24, 2022

NOTES: LUMINAIRE # 24 065 - SEE SPECIFICATIONS

NOTE:
FOR LIGHTING SCHEDULE & SPECIFICATIONS,
REFER TO ELECTRICAL



CLIENT

Ottawa Community Housing (OCH)

39 Auriga Dr, Nepean, ON K2E 7Y8

COPYRIGHT
This drawing has been prepared solely for the intended use, and any reproduction or distribution for any purpose other than authorized by the Group is prohibited. Written permission must be obtained from the Group for any reproduction. The Group shall be held responsible for all dimensions and coordinates shown on this drawing. Other drawings shall be submitted to the Group for approval.

IBI Group Architects (Canada) Inc.
is a member of the IBI Group of companies

ISSUES	No.	DESCRIPTION	DATE
1	ISSUED FOR DRAFT DD SUBMISSION	2020-12-07	
2	ISSUED FOR DD SUBMISSION	2021-01-05	
3	ISSUED FOR OCH SPC APP REVIEW	2021-05-14	
4	ISSUED FOR SPC SUBMISSION	2021-05-19	
5	ISSUED FOR 30% CD INTERNAL COORDINATION	2021-06-03	
6	ISSUED FOR 60% CD ISSUANCE	2021-07-13	
7	RE-ISSUED FOR SPC SUBMISSION	2021-08-23	
8	ISSUED FOR 90% CD ISSUANCE	2021-08-24	
9	ISSUED FOR BUILDING PERMIT	2021-09-07	
10	ISSUED FOR TENDER	2021-10-05	
11	RE-ISSUED FOR TENDER	2021-11-03	
12	RE-ISSUED FOR SPC SUBMISSION	2021-11-16	

KEYPLAN

HEMLOCK

BAREILLE-SNOW

MIKINAK

CONSULTANTS

NOT FOR CONSTRUCTION

SEAL

ASSOCIATION OF LANDSCAPE ARCHITECTS OF ONTARIO

PRIME CONSULTANT

IBI GROUP
Unit 110-4200 Dalton Avenue
Kingston ON K7M 8N7 Canada
Tel 613 531 4440 Fax 613 531 7729
ibi@ibi.com

PROJECT

MIKINAK REDEVELOPMENT
715 MIKINAK ROAD, OTTAWA, ON,
CANADA K1K 2G8

PROJECT NO:
125599

DRAWN BY:
BBLL

PROJECT MGR:
NK

CHECKED BY:
NK

APPROVED BY:
NK

SHEET TITLE

LANDSCAPE DETAILS

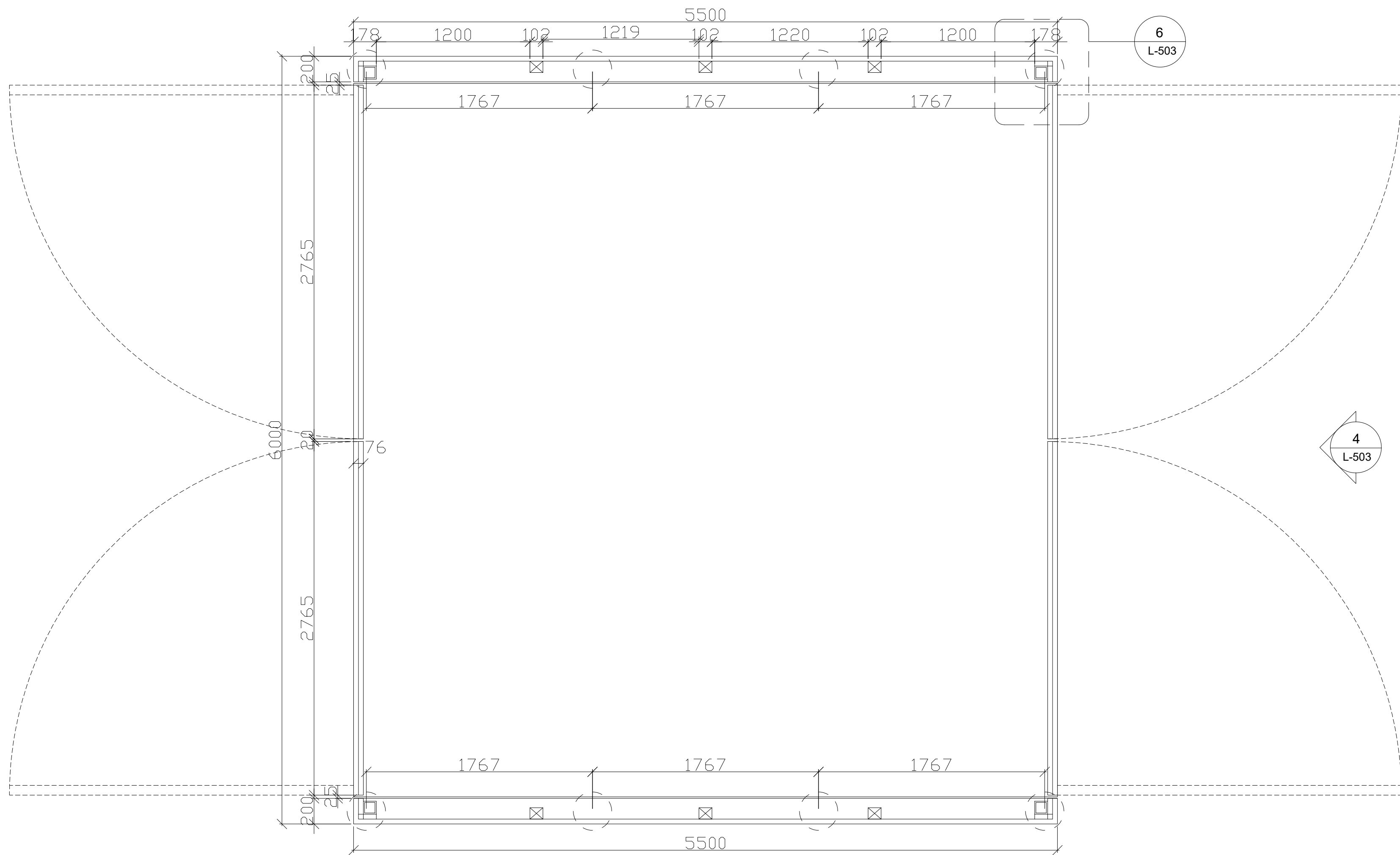
SHEET NUMBER
L-502

SCALE

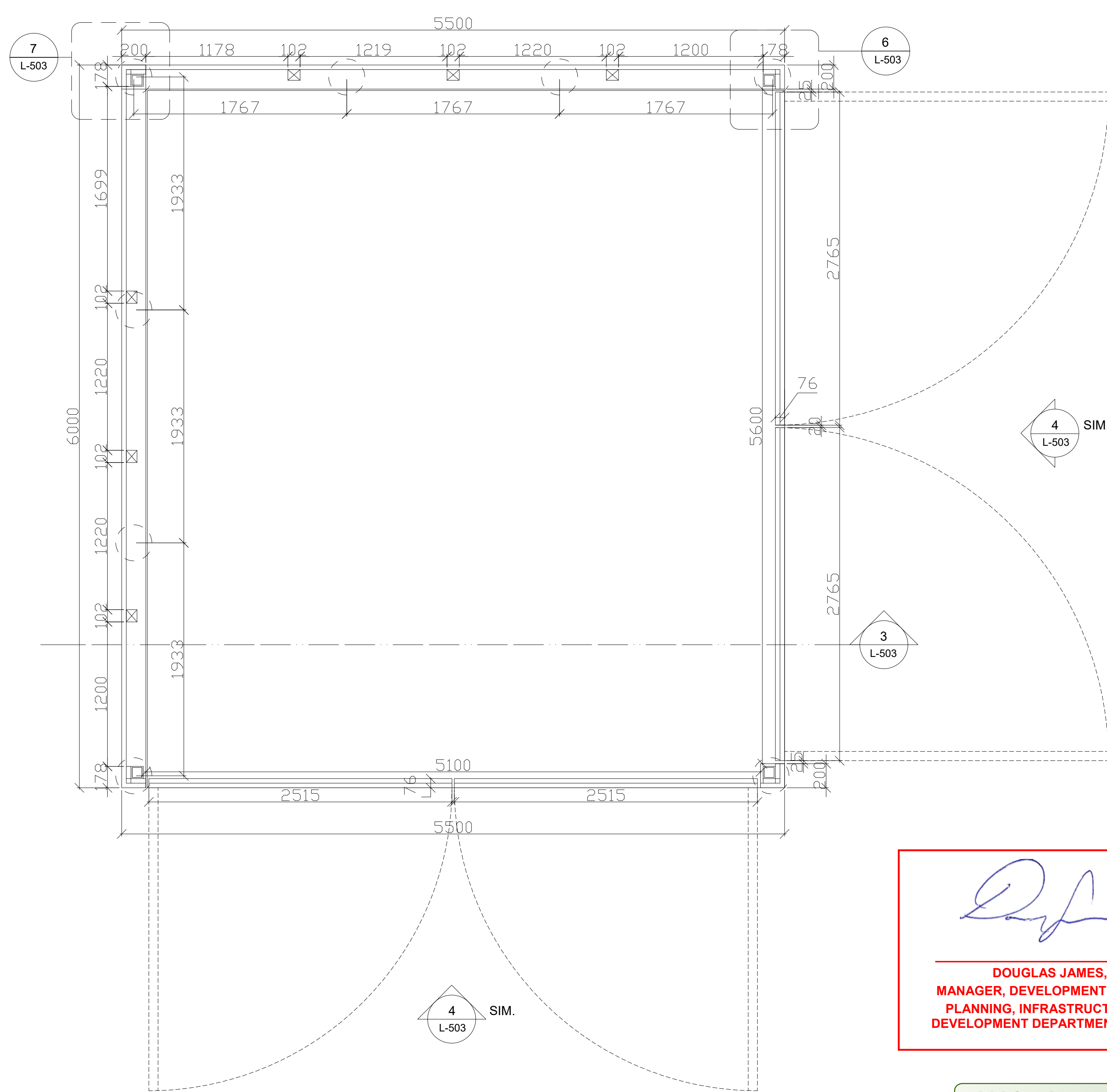
ISSUE
H

#18454

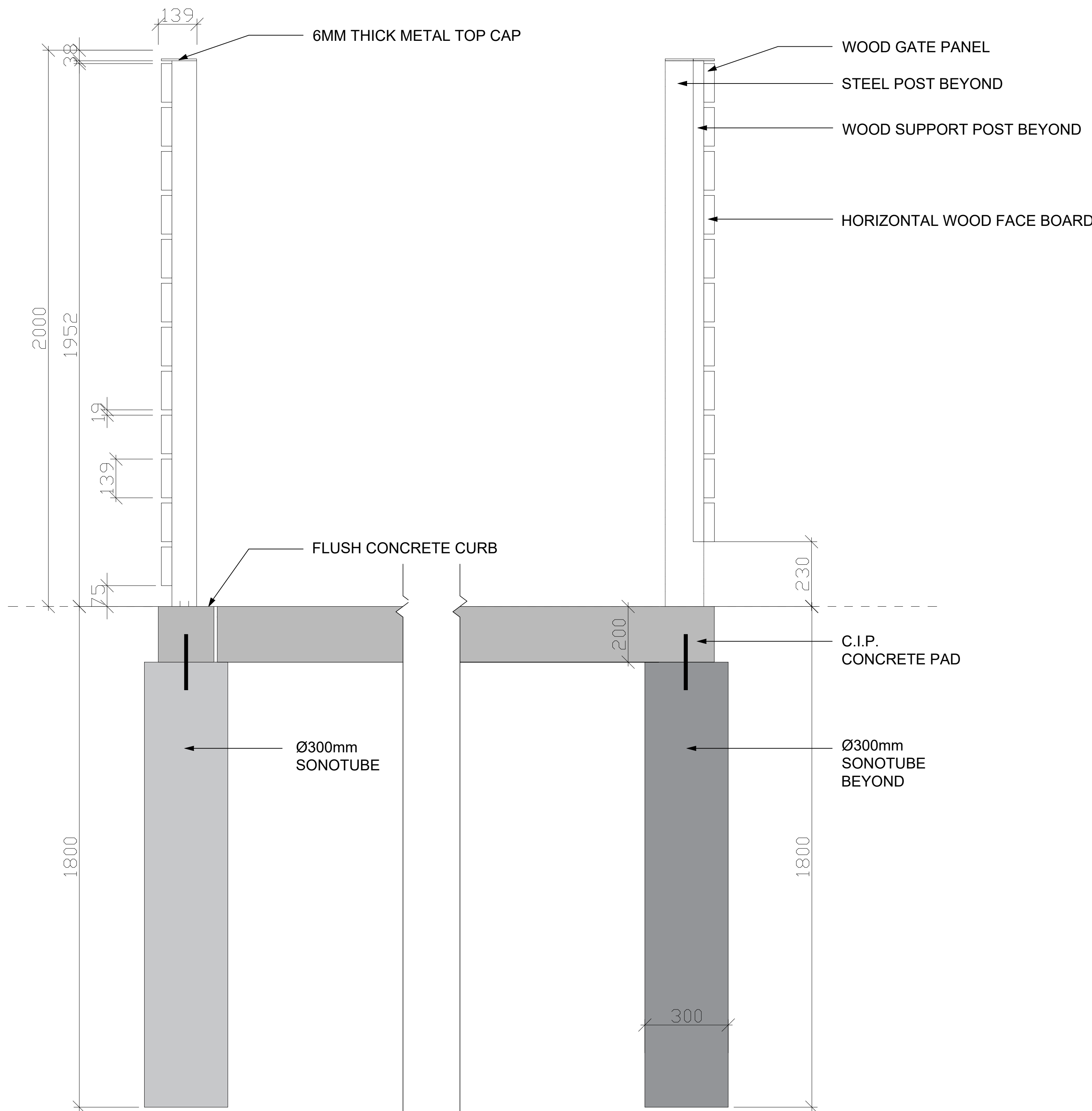
DOT-12-21-0068



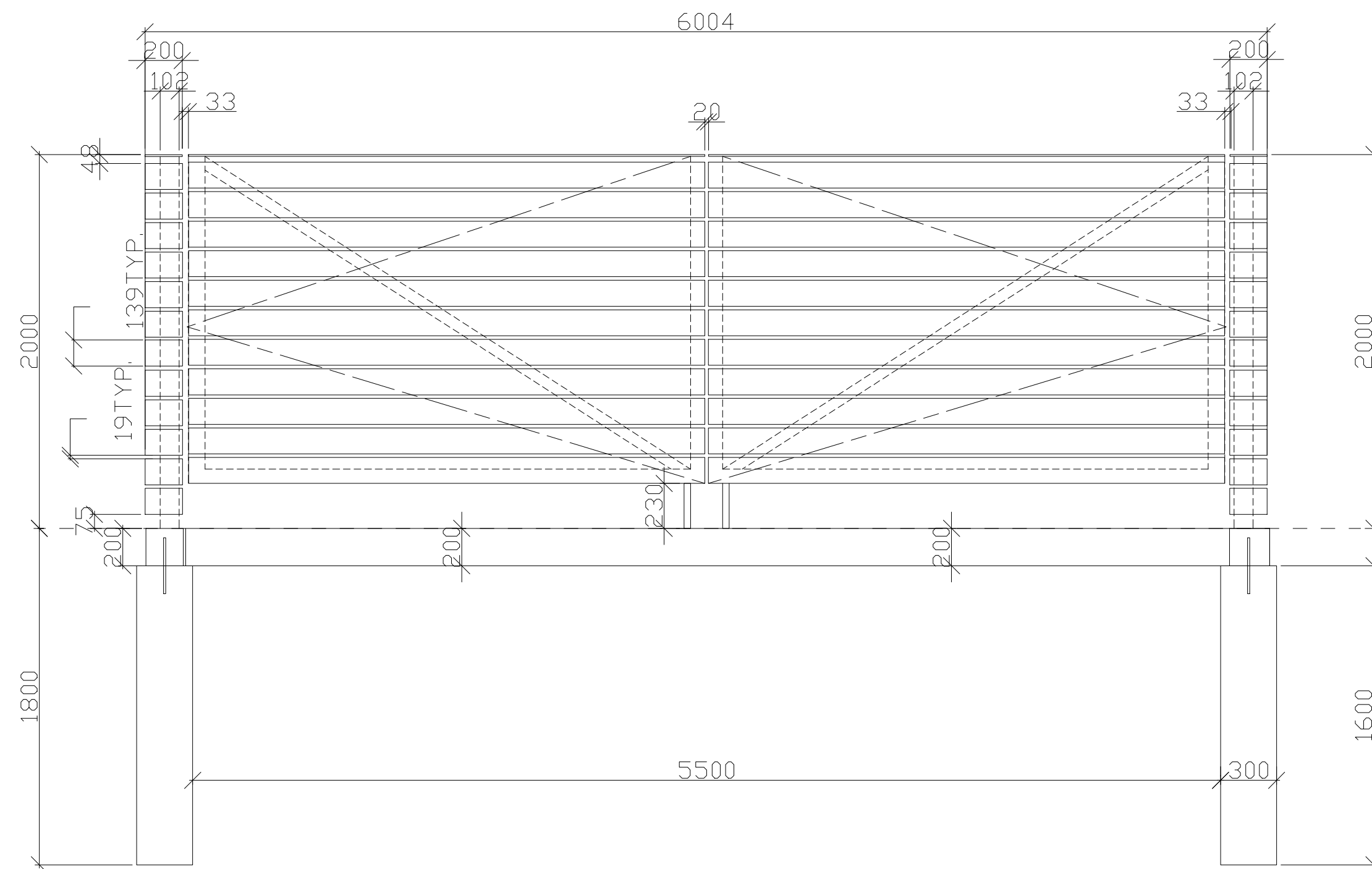
1 NORTH GARBAGE ENCLOSURE - PLAN
L-503/ 1:25



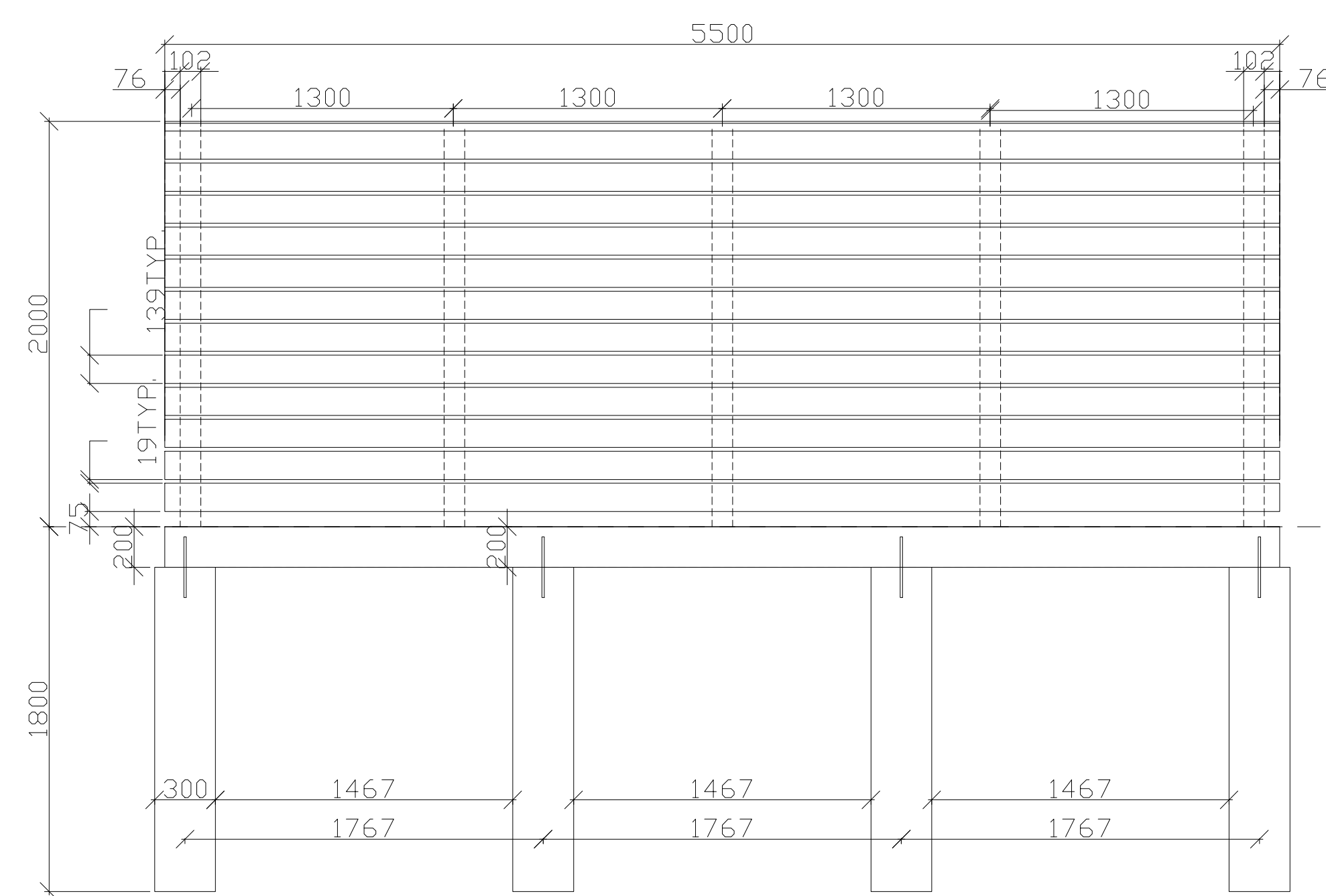
2 SOUTH GARBAGE ENCLOSURE - PLAN
L-503/ 1:10



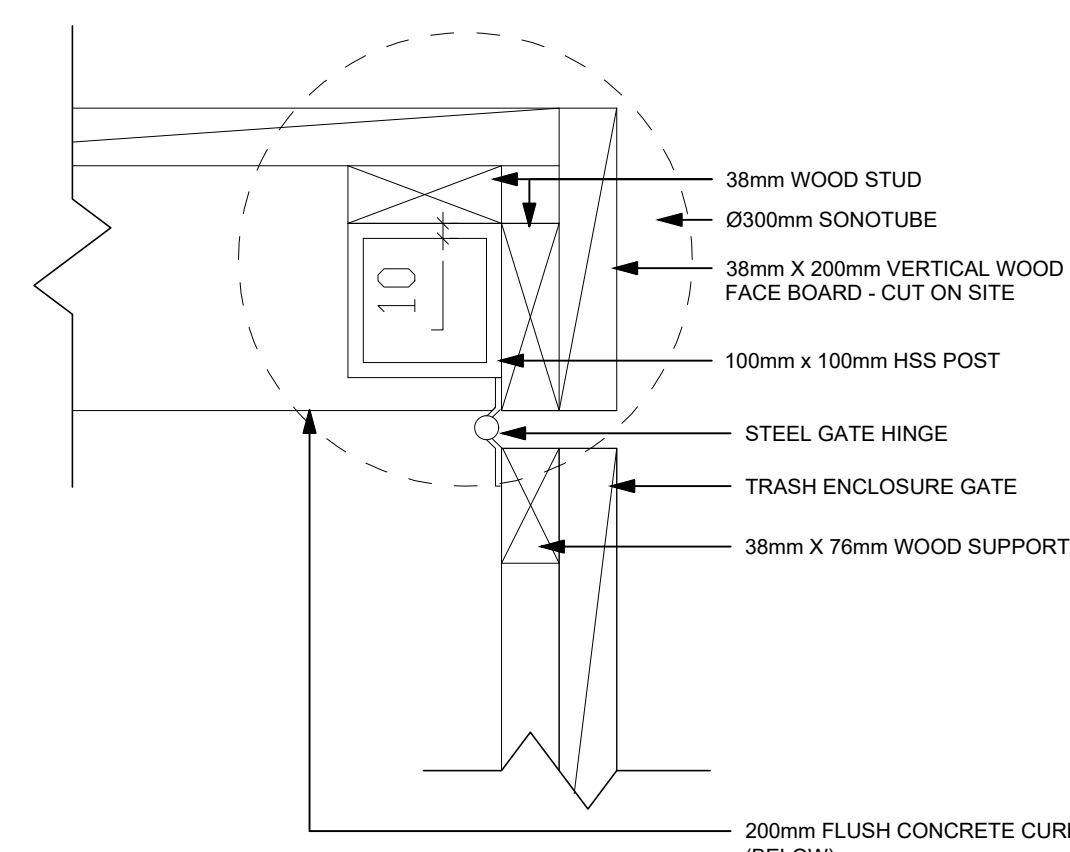
3 GARBAGE ENCLOSURE - SECTION
L-503/ 1:10



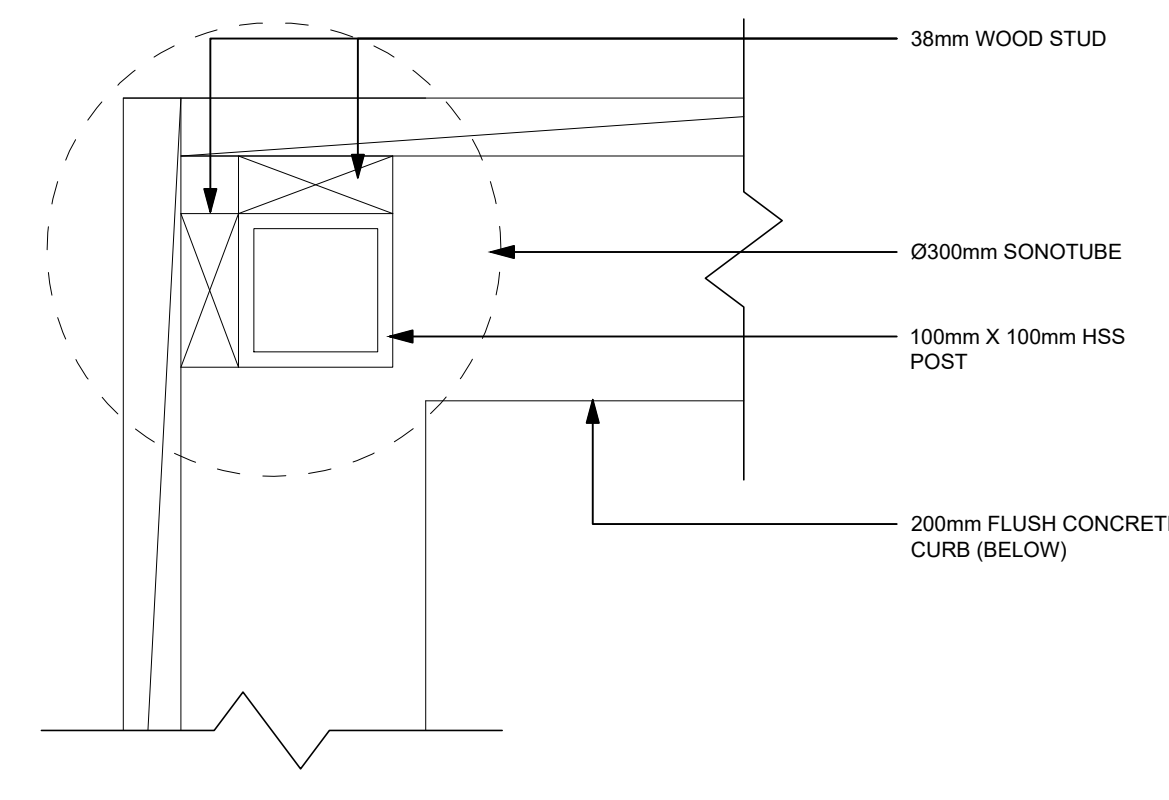
4 GARBAGE ENCLOSURE - GATE ELEVATION
L-503/ 1:25



5 GARBAGE ENCLOSURE - SCREEN ELEVATION
L-503/ 1:25



6 GARBAGE ENCLOSURE - CORNER HINGE DETAIL
L-503/ 1:5




7 GARBAGE ENCLOSURE - CORNER DETAIL
L-503/ 1:5

Douglas James
DOUGLAS JAMES, MCIP, RPP
MANAGER, DEVELOPMENT REVIEW - CENTRAL
PLANNING, INFRASTRUCTURE & ECONOMIC
DEVELOPMENT DEPARTMENT, CITY OF OTTAWA

APPROVED
By Douglas James at 1:21 pm, Jan 24, 2022

CLIENT

Ottawa Community Housing (OCH)



39 Auriga Dr, Nepean, ON K2E 7Y8

COPYRIGHT

The drawings have been prepared solely for the intended use, and any reproduction or distribution for any purpose other than that authorized by IBI Group is prohibited. Written permission must be obtained from IBI Group for any other use. IBI Group and its consultants shall not be responsible for any errors or omissions in the drawings, and the Group shall be relieved of any liability for the drawings and conditions shown on the drawings. Drawings shall be submitted to IBI Group for approval.

IBI Group Architects (Canada) Inc.
is a member of the IBI Group of companies.

ISSUES	No.	DESCRIPTION	DATE
1	ISSUED FOR DRAFT DD SUBMISSION	2020-12-07	
2	ISSUED FOR DD SUBMISSION	2021-01-05	
3	ISSUED FOR OCH SPC APP REVIEW	2021-05-14	
4	ISSUED FOR SPC SUBMISSION	2021-05-19	
5	ISSUED FOR 30% CD INTERNAL COORDINATION	2021-06-03	
6	ISSUED FOR 60% CD ISSUANCE	2021-07-13	
7	RE-ISSUED FOR SPC SUBMISSION	2021-08-23	
8	ISSUED FOR 90% CD ISSUANCE	2021-08-24	
9	ISSUED FOR BUILDING PERMIT	2021-09-07	
10	ISSUED FOR TENDER	2021-10-05	
11	RE-ISSUED FOR TENDER	2021-11-03	
12	RE-ISSUED FOR SPC SUBMISSION	2021-11-16	

KEYPLAN



HEMLOCK
BARELLE-SNOW
MIKINAK
MICHAEL STODOLIA
N

CONSULTANTS

NOT FOR CONSTRUCTION

SEAL



PRIME CONSULTANT

IBI GROUP

Unit 110 - 8501 Dalton Avenue
Kingston, ON K7M 8N7 Canada
Tel: 613 531 4440 Fax: 613 531 7729
ibigroup.com

PROJECT

MIKINAK REDEVELOPMENT

715 MIKINAK ROAD, OTTAWA, ON,
CANADA K1K 2G8

PROJECT NO:

125599

DRAWN BY:

BBLL

CHECKED BY:

NK

APPROVED BY:

NK

PROJECT MGR:

NK

SHEET TITLE

LANDSCAPE DETAILS

SHEET NUMBER

L-503

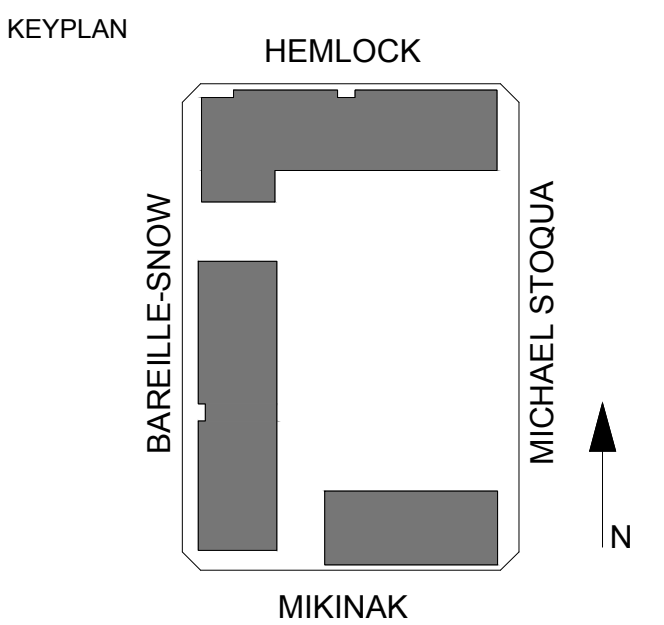
SCALE

ISSUE

H

#18454
DOT-12-21-0085

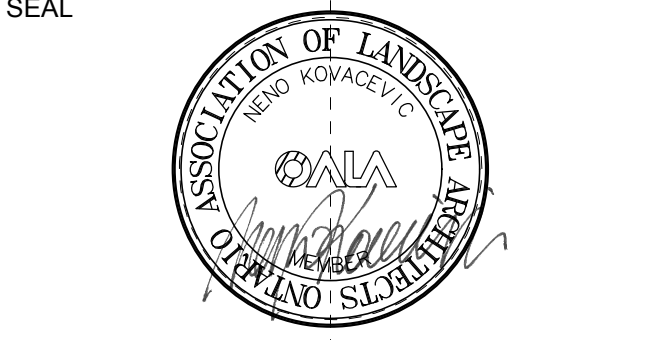
ISSUES		
No.	DESCRIPTION	DATE
1	ISSUED FOR DRAFT DD SUBMISSION	2020-12-07
2	ISSUED FOR DD SUBMISSION	2021-01-05
3	ISSUED FOR OCH SPC APP REVIEW	2021-05-14
4	ISSUED FOR SPC SUBMISSION	2021-05-19
5	ISSUED FOR 30% CD INTERNAL COORDINATION	2021-06-03
6	ISSUED FOR 60% CD ISSUANCE	2021-07-13
7	RE-ISSUED FOR SPC SUBMISSION	2021-08-23
8	ISSUED FOR 90% CD ISSUANCE	2021-08-24
9	ISSUED FOR BUILDING PERMIT	2021-09-07
10	ISSUED FOR TENDER	2021-10-05
11	RE-ISSUED FOR TENDER	2021-11-03
12	RE-ISSUED FOR SPC SUBMISSION	2021-11-16



CONSULTANTS

**NOT FOR
CONSTRUCTION**

SEAL



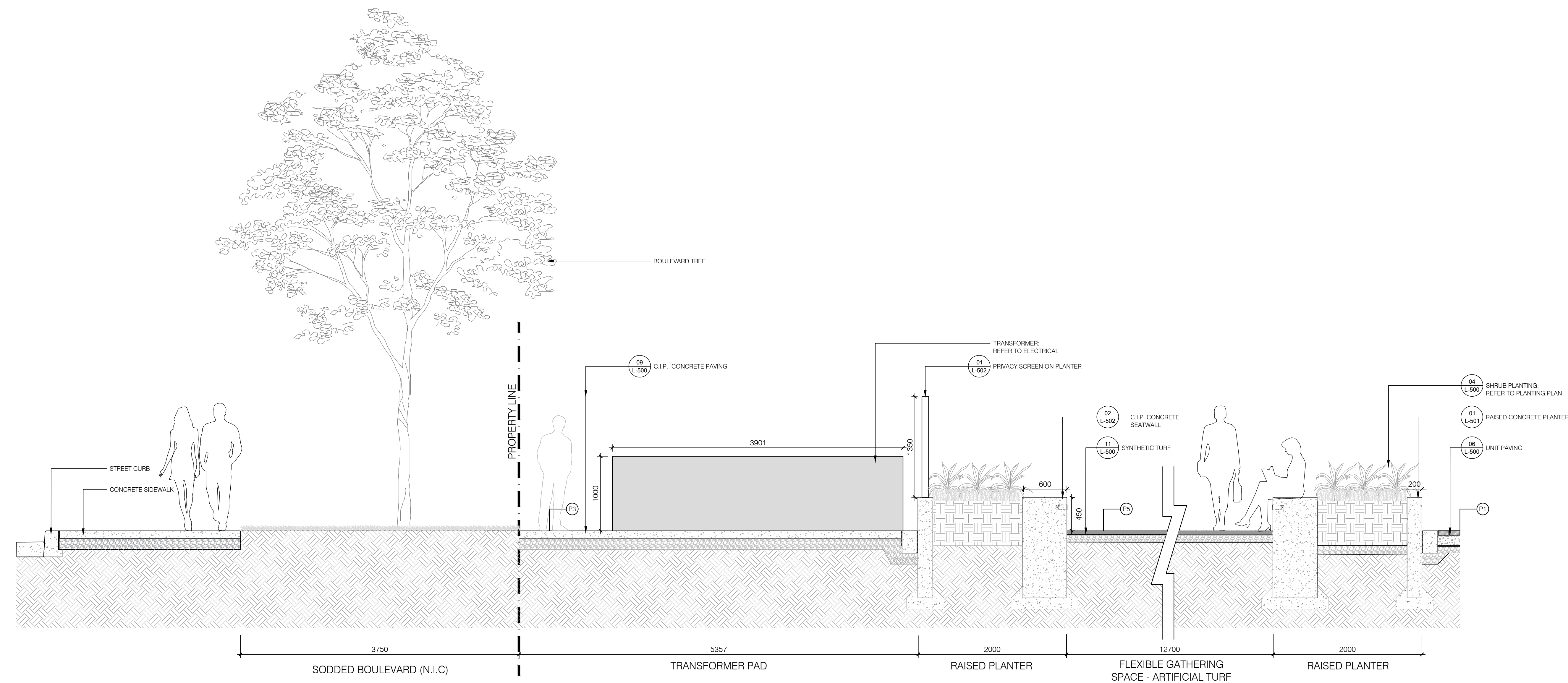
PRIME CONSULTANT
IBI GROUP
Unit 110, 8500 Dalton Avenue
Kingston, ON K7M 8N7, Canada
Tel: 613 531 4440, Fax: 613 531 7729
ibi@group.com

PROJECT
MIKINAK REDEVELOPMENT
715 MIKINAK ROAD, OTTAWA, ON,
CANADA K1K 2G8

PROJECT NO:
125599
DRAWN BY:
BBLL
PROJECT MGR:
NK
CHECKED BY:
NK
APPROVED BY:
NK

SHEET TITLE
LANDSCAPE SECTIONS

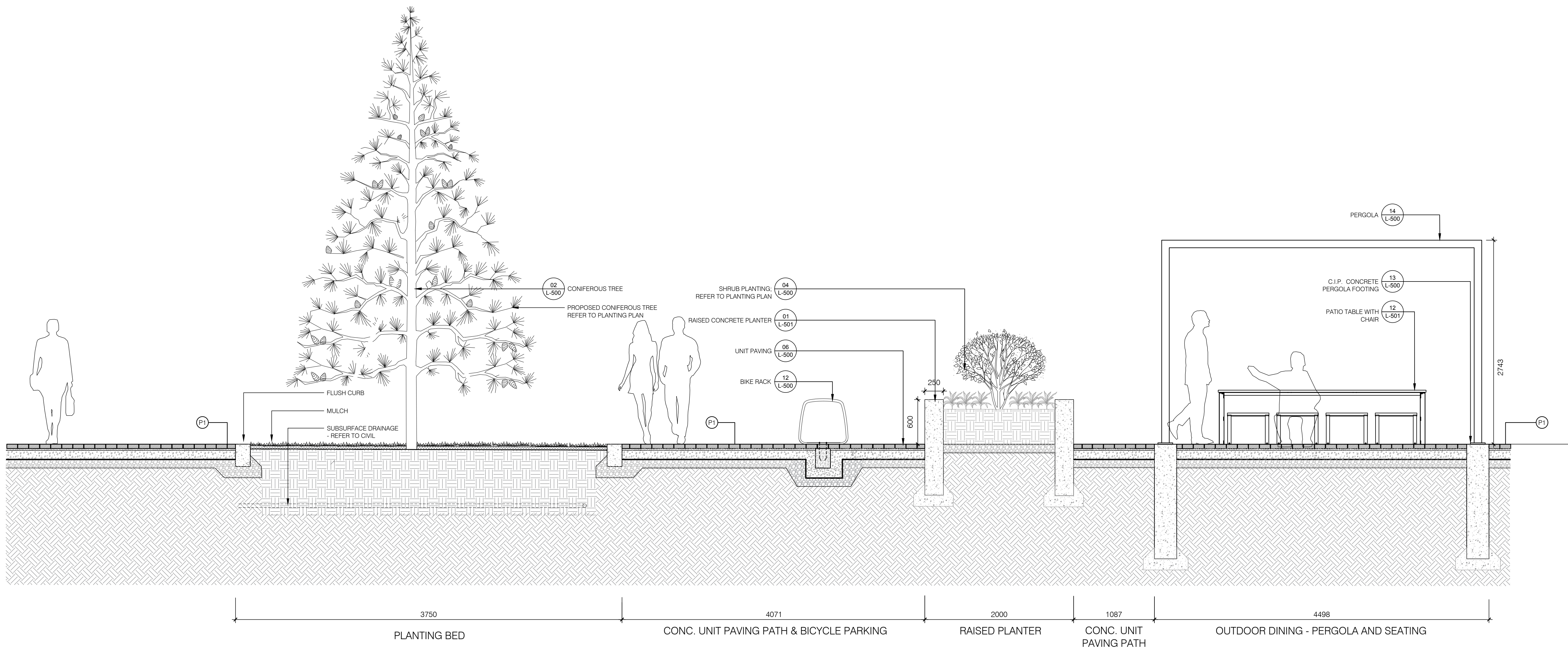
SHEET NUMBER
L-700
SCALE
1:30
ISSUE
H



1 FLEXIBLE GATHERING AREA & TRANSFORMER
L-700/ 1:30

DOUGLAS JAMES, MCIP, RPP
MANAGER, DEVELOPMENT REVIEW - CENTRAL
PLANNING, INFRASTRUCTURE & ECONOMIC
DEVELOPMENT DEPARTMENT, CITY OF OTTAWA

APPROVED
By Douglas James at 1:21 pm, Jan 24, 2022



2 OUTDOOR DINING & CONIFEROUS PLANTING
L-700/ 1:30

