

- LEGEND:**
- ◻ IRON BAR
  - BENCHMARK
  - ⊕ EX FIRE HYDRANT
  - ⊕ EX LIGHT POLE
  - ⊕ EX LIGHT STANDARD
  - ⊕ EX STORM MH
  - ⊕ EX SANITARY MH
  - ⊕ EX STORM CB
  - ⊕ EX WATER VALVE
  - ⊕ EX VALVE CHAMBER
  - ⊕ EX BELL & HYDRO POLE
  - ⊕ EX GUY WIRE AND ANCHOR
  - ⊕ EX TRAFFIC SIGNAL
  - ⊕ EX GAS VALVE
  - ⊕ EX SIGN
  - ⊕ EX TREE
  - SUBJECT PROPERTY
  - PROPERTY LINE
  - EX CONC CURB
  - EX CENTERLINE OF DITCH
  - EX ROAD CENTERLINE
  - EX FENCE
  - EX STORM SEWER
  - EX CONTOUR
  - NEW YARD LIGHT
  - EX ELEVATION
  - OVERLAND FLOW
  - DRAINAGE AREA BOUNDARY
  - CATCHMENT I.D.
  - AREA (ha) | RUN-OFF COEFFICIENT

No.	REVISIONS	Date	By	App.
C	RE-ISSUED FOR SPA	DEC 03 2021	ML	J.S.
B	RE-ISSUED FOR SPA	SEPT 24 2021	ML	J.S.
A	ISSUED FOR SPA	APR 27 2021	LMB	J.S.

LICENSED PROFESSIONAL ENGINEER

*J.D. STERN*  
100232894  
Dec. 8/2021  
PROVINCE OF ONTARIO

**exp Services Inc.**  
 +1 905 793 9800 | +1 905 793 0641  
 1595 Clark Boulevard  
 Brampton, ON L6T 4V1  
 Canada  
 www.exp.com

**exp.**

• BUILDINGS • EARTH & ENVIRONMENT • ENERGY •  
 • INDUSTRIAL • INFRASTRUCTURE • SUSTAINABILITY •

Owner/Clien:

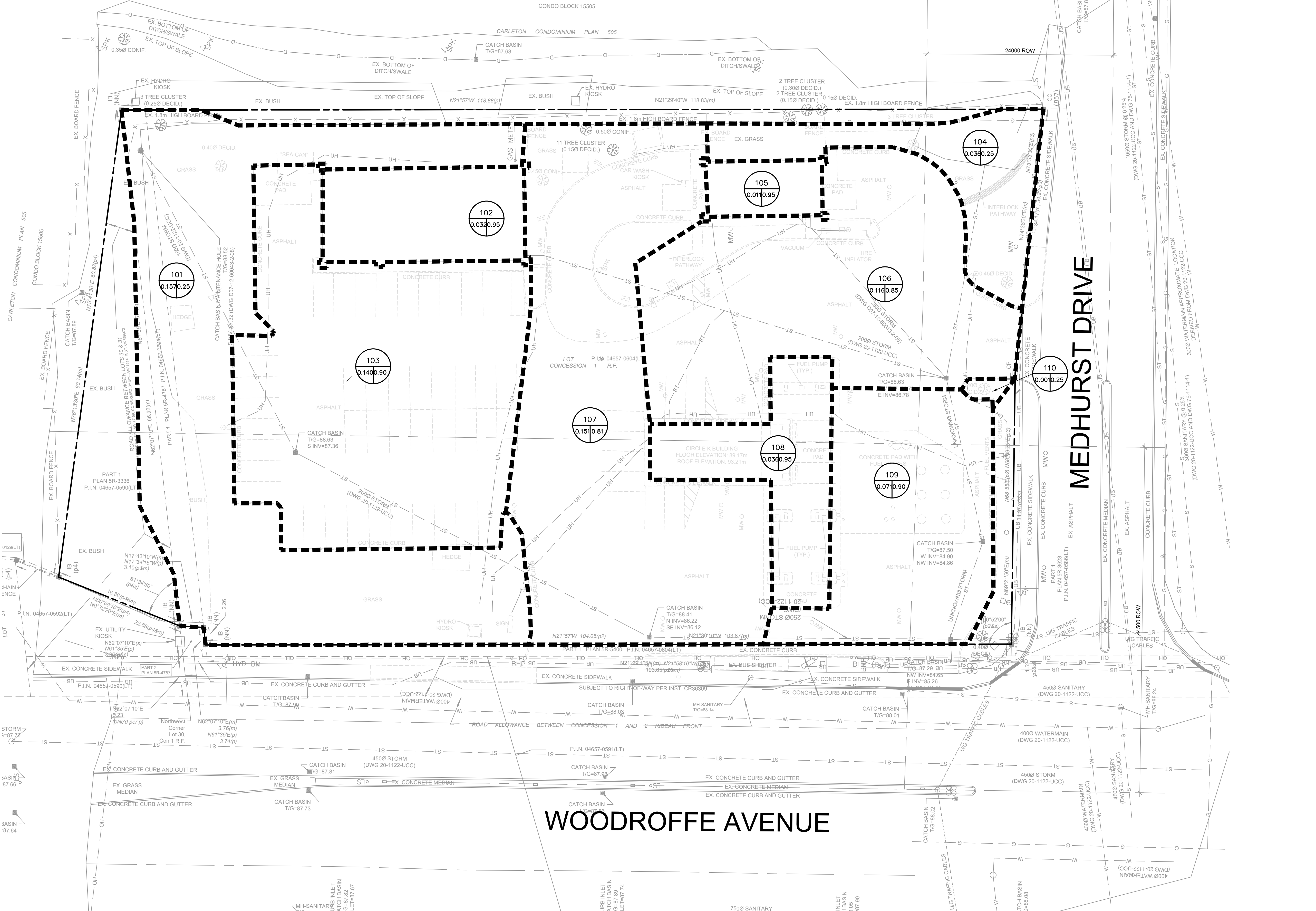
**CIRCLE K**

Location:  
 1545 WOODROFFE AVE.  
 OTTAWA, ON

Title:  
 PRE-DEVELOPMENT  
 DRAINAGE PLAN

Designed By: L.M.B.	Drawn By: L.M.B.	Checked By: J.S.
Scale: 1:250	Date: APRIL 2020	City Drawing No. <b>C06</b>
Project No.: BRM00606364-B0		Drawing No. <b>C06</b>

CITY DWG. # 17094



**WOODROFFE AVENUE**

7500 SANITARY

CITY # 007-1221-0056