

# PLANT LIST - 244 Fountain Place

QTY.	KEY	BOTANICAL NAME	COMMON NAME	SIZE	REMARKS
<b>DECIDUOUS TREES - REFER TO DETAIL 1/L103</b>					
2	AC	<i>Amelanchier canadensis</i>	Serviceberry	2500mm ht.	W.B.; Clump Form; Plant @ 4000mm o/c
<b>CONIFEROUS TREES - REFER TO DETAIL 2/L103</b>					
10	TO	<i>Thuja occidentalis</i> 'Degroot's Spire'	Degroot's Spire Cedar	2000mm ht.	W.B.; Plant at 1000mm o/c
<b>DECIDUOUS SHRUBS - REFER TO DETAIL 3/L103 &amp; 4/L103</b>					
3	CO	<i>Cotoneaster apiculatus</i> 'Tom Thumb'	Tom Thumb Cotoneaster	2 Gal.	Potted; Plant at 1000mm o/c
19	DL	<i>Diervilla lonicera</i>	Bush Honeysuckle	2 Gal.	Potted; Plant at 1000mm o/c
12	RA	<i>Rhus aromatica</i>	Fragrant Sumac	3 Gal.	Potted; Plant at 1500mm o/c
11	SA	<i>Symphoricarpos albus</i>	Snowberry	1 Gal.	Potted; Plant at 1000mm o/c
<b>PERENNIALS / ORNAMENTAL GRASSES - REFER TO DETAIL 5/L103</b>					
8	CA	<i>Calamagrostis acutiflora</i> 'Overdam'	Overdam Feather Reed Grass	1 Gal.	Potted; Plant at 750mm o/c
11	HO	<i>Hosta</i> 'Blue Ivory'	Blue Ivory Hosta	1 Gal.	Potted; Plant at 500mm o/c
13	HE	<i>Hemerocallis</i> 'Gentle Shepherd'	Gentle Shepherd Daylily	1 Gal.	Potted; Plant at 500mm o/c
4	NF	<i>Nepeta faassenii</i> 'Walkers Low'	Walkers Low Catmint	1 Gal.	Potted; Plant at 750mm o/c

# PLANT LIST - Besserer Park

QTY.	KEY	BOTANICAL NAME	COMMON NAME	SIZE	REMARKS
<b>DECIDUOUS TREES - REFER TO DETAIL 1/L103</b>					
1	AR	<i>Acer rubrum</i>	Red Maple	60mm cal.	W.B.; Plant at min. 5.5m from other trees
2	AS	<i>Acer saccharum</i>	Sugar Maple	60mm cal.	W.B.; Plant at min. 5.5m from other trees
4	QR	<i>Quercus rubra</i>	Red Oak	60mm cal.	W.B.; Plant at min. 5.5m from other trees
1	UV	<i>Ulmus</i> x 'Vanguard'	Vanguard	60mm cal.	W.B.; Plant at min. 5.5m from other trees
<b>DECIDUOUS SHRUBS - REFER TO DETAILS 3/L103 &amp; 4/L103</b>					
4	AL	<i>Amelanchier laevis</i>	Allegheny Serviceberry	2 Gal.	Potted
10	CS	<i>Cornus sericea</i>	Red Osier Dogwood	1 Gal.	Potted; Plant at 2500mm o/c
7	PO	<i>Physocarpus opulifolius</i>	Commom Ninebark	1 Gal.	Potted; Plant at 1800mm o/c
8	SA	<i>Symphoricarpos albus</i>	Snowberry	1 Gal.	Potted; Plant at 1000mm o/c
21	VA	<i>Viburnum acerifolium</i>	Mapleleaf Viburnum	1 Gal.	Potted; Plant at 1000mm o/c
<b>REFORESTATION BEDS - REFER TO DETAILS 8/L103 &amp; 9/L103</b>					
<b>Deciduous Trees</b>					
12	ARU	<i>Acer rubrum</i>	Red Maple	1000mm ht.	Potted; Plant at 2000mm o/c
10	ASA	<i>Acer saccharum</i>	Sugar Maple	1000mm ht.	Potted; Plant at 2000mm o/c
7	QRU	<i>Quercus rubra</i>	Red Oak	1000mm ht.	Potted; Plant at 2000mm o/c
7	TAM	<i>Tilia americana</i>	Basswood	1000mm ht.	Potted; Plant at 2000mm o/c
<b>Coniferous Trees</b>					
12	TOC	<i>Thuja occidentalis</i>	Eastern White Cedar	400mm ht.	Potted; Plant at 2000mm o/c

## LANDSCAPE NOTES

- REFER TO TREE CONSERVATION REPORT INCLUDING TREE PRESERVATION PLAN FOR INFORMATION REGARDING TREE REMOVAL.
- REFER TO "GRADING PLAN" FOR PROPOSED GRADING.
- REFER TO "SITE SERVICING PLAN" FOR LOCATION AND DETAILS OF PROPOSED UNDERGROUND SERVICES.
- SOD SHALL BE KENTUCKY BLUEGRASS SOD INSTALLED OVER 135mm OF TOPSOIL. SOD SHALL BE INSTALLED THROUGHOUT WITHIN LIMIT OF WORK AND IN ALL DISTURBED AREAS OUTSIDE THE LIMIT OF WORK. SOD SHALL BE INSTALLED AS PER OPS 803.
- CONTRACTOR TO LOCATE AND STAKE ALL UTILITIES PRIOR TO ANY WORK ON THE SITE. DO NOT PLANT DIRECTLY ABOVE UNDERGROUND UTILITIES. REPORT ANY DISCREPANCIES TO THE LANDSCAPE ARCHITECT FOR DIRECTION.
- MAINTAIN A MINIMUM CLEARANCE OF 2.0m BETWEEN ALL UNDERGROUND UTILITIES AND PROPOSED TREES.
- NO TREES SHALL BE PLANTED UNDER OVERHEAD WIRES.
- THE LANDSCAPE ARCHITECT MAY ADJUST THE LOCATION OF TREES PRIOR TO PLANTING TO MINIMIZE CONFLICTS WITH UTILITIES, DRIVEWAYS AND INTERSECTION VISIBILITY.
- CONTRACTOR SHALL SUPPLY ALL MATERIALS IN QUANTITIES SUFFICIENT TO COMPLETE WORK SHOWN ON THESE DRAWINGS. ANY DISCREPANCIES SHALL BE REPORTED TO THE LANDSCAPE ARCHITECT FOR DIRECTION.
- DO NOT MAKE SUBSTITUTIONS OF MATERIALS, PRODUCTS OR QUANTITIES WITHOUT PRIOR WRITTEN PERMISSION OF THE LANDSCAPE ARCHITECT.
- THE CONTRACTOR TO MAKE GOOD TO THE SATISFACTION OF THE LANDSCAPE ARCHITECT ANY AREAS DAMAGED BY THE WORK.
- UPON THE COMPLETION OF WORK EACH DAY, REMOVE ALL DEBRIS, GARBAGE AND SURPLUS MATERIALS FROM THE SITE. KEEP THE SITE CLEAN AND USEABLE AT ALL TIMES.
- ALL WORKMANSHIP AND MATERIALS (INCLUDING PLANTS) AT 244 FOUNTAIN PLACE TO BE GUARANTEED FOR ONE FULL YEAR FOLLOWING FINAL ACCEPTANCE OF THE PROJECT. TREES PLANTED IN BESSERER PARK TO BE GUARANTEED FOR TWO FULL YEARS FOLLOWING FINAL ACCEPTANCE OF THE PROJECT.
- THE CONTRACTOR SHALL REMOVE ALL T-BAR AND WOODEN TREE STAKES PRIOR TO ASSUMPTION BY THE OWNER.
- AT THE TIME OF INSPECTION FOR ACCEPTANCE ALL TREE PITS SHALL BE CULTIVATED, FREE OR WEEDS, LEAVES, BROKEN BRANCHES AND DEBRIS.



Stantec Consulting Ltd.  
400 - 1331 Clyde Avenue  
Ottawa ON  
Tel. 613.722.4420  
www.stantec.com

## Copyright Reserved

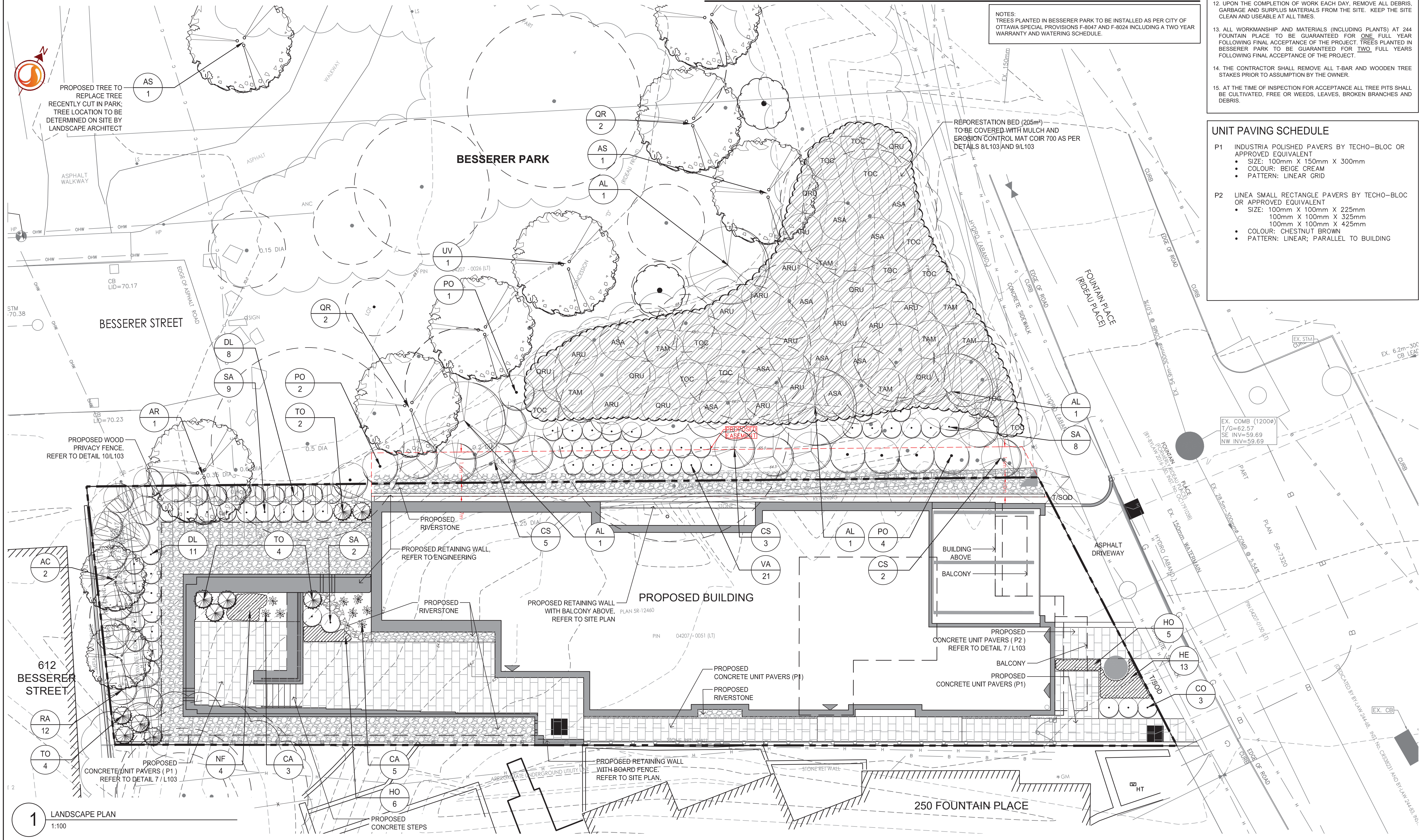
The Contractor shall verify and be responsible for all dimensions. DO NOT scale the drawing - any errors or omissions shall be reported to Stantec without delay.  
The Copyrights to all designs and drawings are the property of Stantec. Reproduction or use for any purpose other than that authorized by Stantec is forbidden.

## Legend

- EXISTING TREE
- EXISTING BUTTERNUT TREE
- EXISTING WOODED AREA
- CRITICAL ROOT ZONE
- PROPOSED DECIDUOUS TREE
- PROPOSED CONIFEROUS TREE
- PROPOSED PERENNIALS AND ORNAMENTAL GRASSES
- PROPOSED REFORESTATION BED
- PROPOSED PLANTING BED
- PROPOSED UNIT PAVERS REFER TO DETAIL 7/L103
- PROPOSED CONCRETE
- PROPOSED RIVERSTONE REFER TO DETAIL 6/L103
- TOPSOIL AND SOD
- PROPOSED BOARD ON BOARD WOODEN FENCE
- PROPERTY LINE

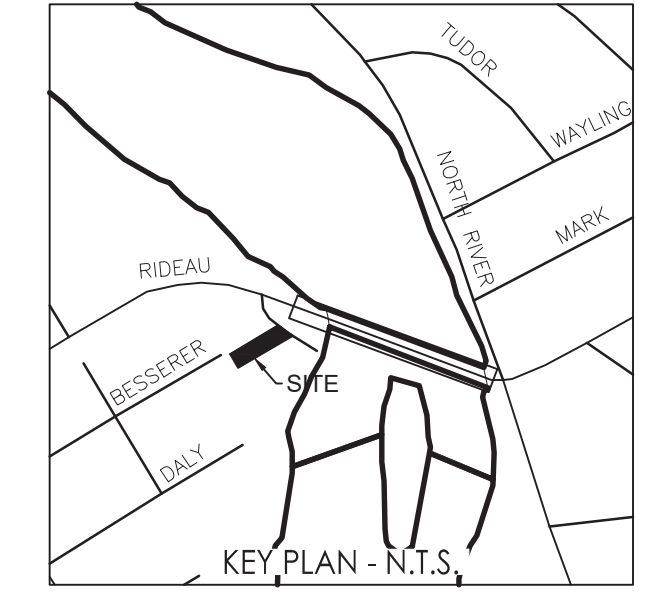
## UNIT PAVING SCHEDULE

- P1 INDUSTRIA POLISHED PAVERS BY TECO-BLOC OR APPROVED EQUIVALENT**
- SIZE: 100mm X 150mm X 300mm
  - COLOR: BEIGE CREAM
  - PATTERN: LINEAR GRID
- P2 LINEA SMALL RECTANGLE PAVERS BY TECO-BLOC OR APPROVED EQUIVALENT**
- SIZE: 100mm X 100mm X 225mm
  - 100mm X 100mm X 325mm
  - 100mm X 100mm X 425mm
  - COLOR: CHESTNUT BROWN
  - PATTERN: LINEAR; PARALLEL TO BUILDING



NOTES:  
TREES PLANTED IN BESSERER PARK TO BE INSTALLED AS PER CITY OF OTTAWA SPECIAL PROVISIONS F-8047 AND F-8024 INCLUDING A TWO YEAR WARRANTY AND WATERING SCHEDULE.

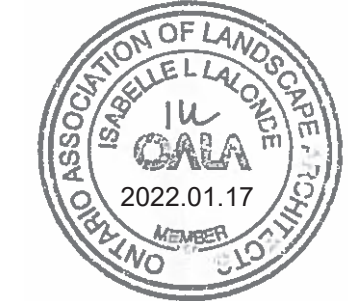
REFORESTATION BED (205m<sup>2</sup>)  
TO BE COVERED WITH MULCH AND EROSION CONTROL MAT COIR 700 AS PER DETAILS 8/L103 AND 9/L103



9	REVISED AS PER CITY COMMENTS	IL	IL	22.01.17
4	REVISED SITE PLAN	GM	IL	19.10.11
3	REVISED SITE PLAN	LZ	IL	18.10.26
2	REVISED SITE PLAN	IL	IL	17.01.23
1	ISSUED TO SITE PLAN CONTROL APPROVAL	BD	IL	16.10.19

Revision: By Appd. YYMM.DD  
File Name: 160401234-LB  
Dwn. Chkd. Dgnd. YYMM.DD

## Permit Seal



Client/Project  
**TC UNITED GROUP**  
  
244 FOUNTAIN PLACE  
  
OTTAWA, ON

Title  
**LANDSCAPE PLAN**

Project No.	Scale	0 1 2 3 5m
160401234	1:100	
Drawing No.	Sheet	Revision
L102	1 of 2	9

W:\active\160401234\_244 Fountain Place\design\drawing\160401234-LA.dwg  
2022/01/17 3:46 PM By: L. Lalonde

D07-12-16-0150