

Archaeological  
Services

Geotechnical  
Engineering

Environmental  
Engineering

Hydrogeology

Geological  
Engineering

Materials Testing

Building Science

# patersongroup

## REVISED SUPPLEMENTARY DOCUMENTATION

### Stage 1 and 2 Archaeological Assessment

Proposed Cardinal Creek Development - Part Lot 28  
Ottawa, Ontario

#### Prepared For

Taggart Investments  
3187 Albion Rd S,  
Ottawa ON,  
K1V 8Y3

Phone: (613) 521-3000

Fax: (613) 526-5909

Attention: Mr. Ted Philips

September, 2012

PIF: P369-002-2012

Ben Mortimer, MA (Licence Number P369)

Report: PA1001

#### Paterson Group Inc.

Consulting Engineers  
154 Colonnade Road South  
Ottawa (Nepean), Ontario  
Canada K2E 7J5

Tel: (613) 226-7381

Fax: (613) 226-6344

[www.patersongroup.ca](http://www.patersongroup.ca)

**Note: Supplementary documentation is not entered into the Ontario Register of Archaeological Reports in order to protect personal privacy in accordance with the *Freedom of Information and Protection of Privacy Act* and sensitive archaeological sites. This information is not to be disseminated to the public.**

## **1. GPS Co-ordinates of find spots and positive test pits**

Provenience	Date	Assessment Method	Easting	Northing	Altitude (m)
PA1001-1A1	2012-06-04	Pedestrian	463322	5038158	65
PA1001-1A2	2012-06-04	Pedestrian	463326	5038162	63
PA1001-1A3	2012-06-04	Pedestrian	463337	5038165	65
PA1001-1A4	2012-06-04	Pedestrian	463330	5038169	66
PA1001-1A5	2012-06-04	Pedestrian	463323	5038171	68
PA1001-1A6	2012-06-04	Pedestrian	463347	5038163	73
PA1001-1B1	2012-06-04	Pedestrian	463271	5038153	66
PA1001-1B2	2012-06-04	Pedestrian	463278	5038135	66
PA1001-1B3	2012-06-04	Pedestrian	463280	5038140	63
PA1001-1B4	2012-06-04	Pedestrian	463294	5038155	66
PA1001-1C1	2012-06-04	Pedestrian	463316	5038275	72
PA1001-1D1	2012-06-04	Pedestrian	463233	5038218	65
PA1001-1E1	2012-06-04	Pedestrian	463222	5038128	66
PA1001-1F1	2012-06-04	Pedestrian	463187	5038312	64
PA1001-1G1	2012-06-04	Pedestrian	463192	5038182	64
PA1001-1H1	2012-06-04	Pedestrian	463144	5038191	63
PA1001-1J1	2012-06-04	Pedestrian	463112	5038224	60
PA1001-1J1	2012-06-04	Pedestrian	463112	5038208	60
PA1001-1K1	2012-06-04	Pedestrian	463060	5038355	57
PA1001-1L1	2012-06-04	Pedestrian	463095	5038421	59
PA1001-1M1	2012-06-04	Pedestrian	463351	5038198	66
PA1001-1N1	2012-06-28	Shovel Test	463172	5038102	64
PA1001-1N2	2012-06-29	Shovel Test	463191	5038084	66
PA1001-1N3	2012-06-29	Shovel Test	463207	5038161	66
PA1001-2A1	2012-06-05	Pedestrian	463062	5038587	61
PA1001-2A2	2012-06-05	Pedestrian	463047	5038562	60
PA1001-2A3	2012-06-05	Pedestrian	463063	5038559	63
PA1001-2A4	2012-06-05	Pedestrian	463064	5038574	63
PA1001-2A5	2012-06-05	Pedestrian	463059	5038580	63
PA1001-2B1	2012-06-05	Pedestrian	463139	5038572	69
PA1001-2B2	2012-06-05	Pedestrian	463138	5038570	69
PA1001-2B3	2012-06-05	Pedestrian	463148	5038566	67
PA1001-2B4	2012-06-05	Pedestrian	463145	5038559	66
PA1001-2B5	2012-06-05	Pedestrian	463141	5038562	69
PA1001-2B6	2012-06-05	Pedestrian	463133	5038563	69
PA1001-2B7	2012-06-05	Pedestrian	463126	5038560	69
PA1001-2B8	2012-06-05	Pedestrian	463120	5038556	66

Provenience	Date	Assessment Method	Easting	Northing	Altitude (m)
PA1001-2B9	2012-06-05	Pedestrian	463115	5038561	65
PA1001-2B10	2012-06-05	Pedestrian	463134	5038549	64
PA1001-2B11	2012-06-05	Pedestrian	463141	5038555	63
PA1001-2B12	2012-06-05	Pedestrian	463143	5038551	66
PA1001-2B13	2012-06-05	Pedestrian	463144	5038540	64
PA1001-2B14	2012-06-05	Pedestrian	463127	5038548	66
PA1001-2B15	2012-06-05	Pedestrian	463116	5038543	66
PA1001-2B16	2012-06-05	Pedestrian	463139	5038578	64
PA1001-2C1	2012-06-11	Shovel Test	463152	5038492	67
PA1001-2C2	2012-06-11	Shovel Test	463162	5038517	69
PA1001-2C3	2012-06-11	Shovel Test	463161	5038521	69
PA1001-2C4	2012-06-11	Shovel Test	463152	5038551	66

Note: Coordinates Projected in Transverse Mercator Datum NAD 83, UTM Zone 18

## **2. Supplementary Maps**





# Legend

## Findspots

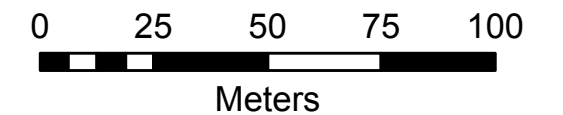
### Assessment Method

- Pedestrian
- Shovel Test



### Reference:

Air Photo circa 2011 provided by DSEL Engineering



Scale 1:1,661

Projection: Transverse Mercator Datum NAD 83, UTM Zone 18

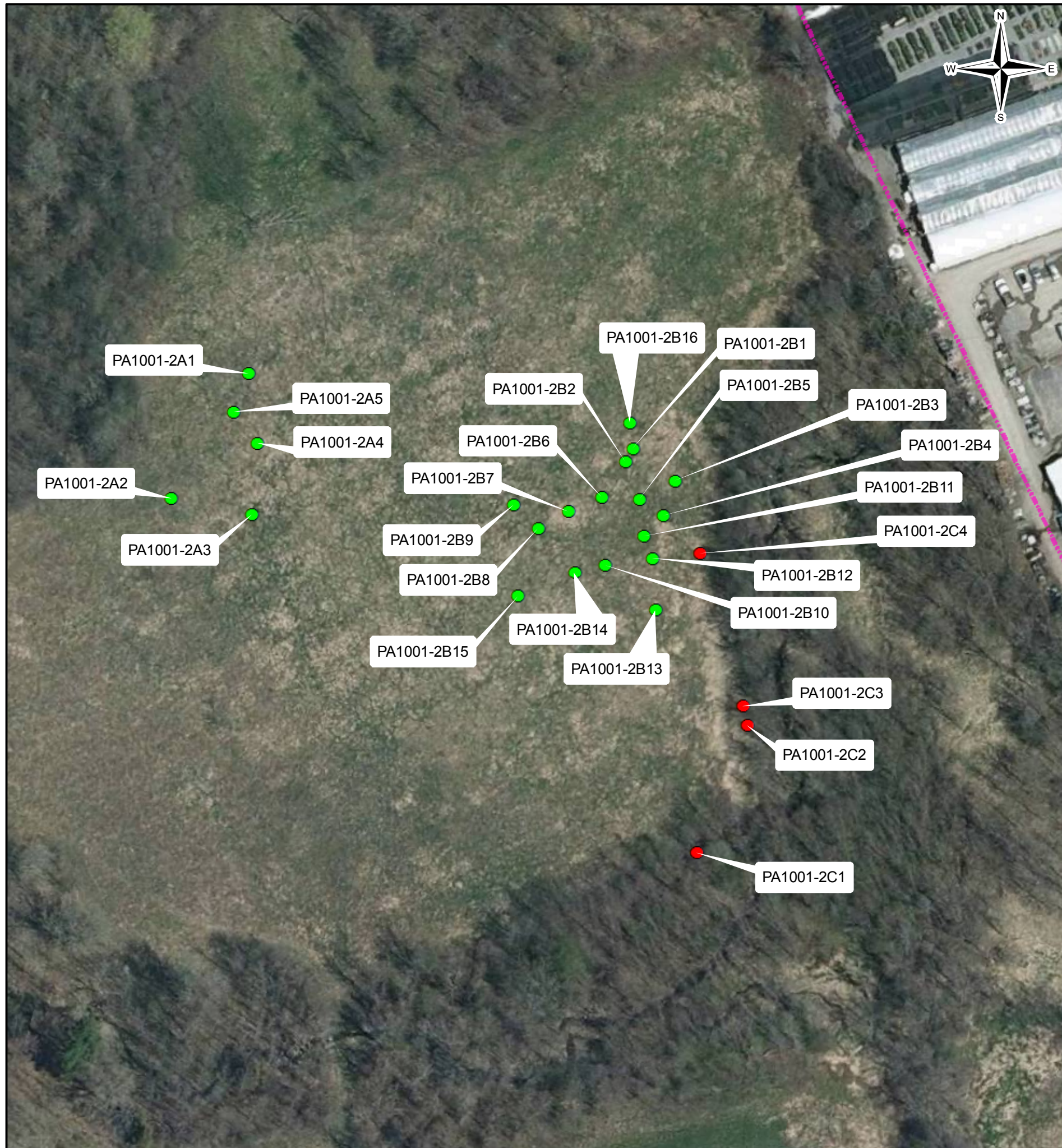
### Project:

PA1001: Taggart - Cardinal Creek Village Proposed Development, Township of Cumberland, City of Ottawa, Ontario

### Title:

Archaeological Findspots:  
Operation 1





# Legend

## Findspots

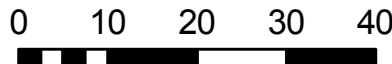
### Assessment Method

- Pedestrian
- Shovel Test



Reference:

Air Photo circa 2011 provided by DSEL Engineering



Meters  
Scale 1:847

Projection: Transverse Mercator Datum NAD 83, UTM Zone 18

**Project:**  
PA1001: Taggart - Cardinal Creek Village Proposed Development,  
Township of Cumberland, City of Ottawa, Ontario

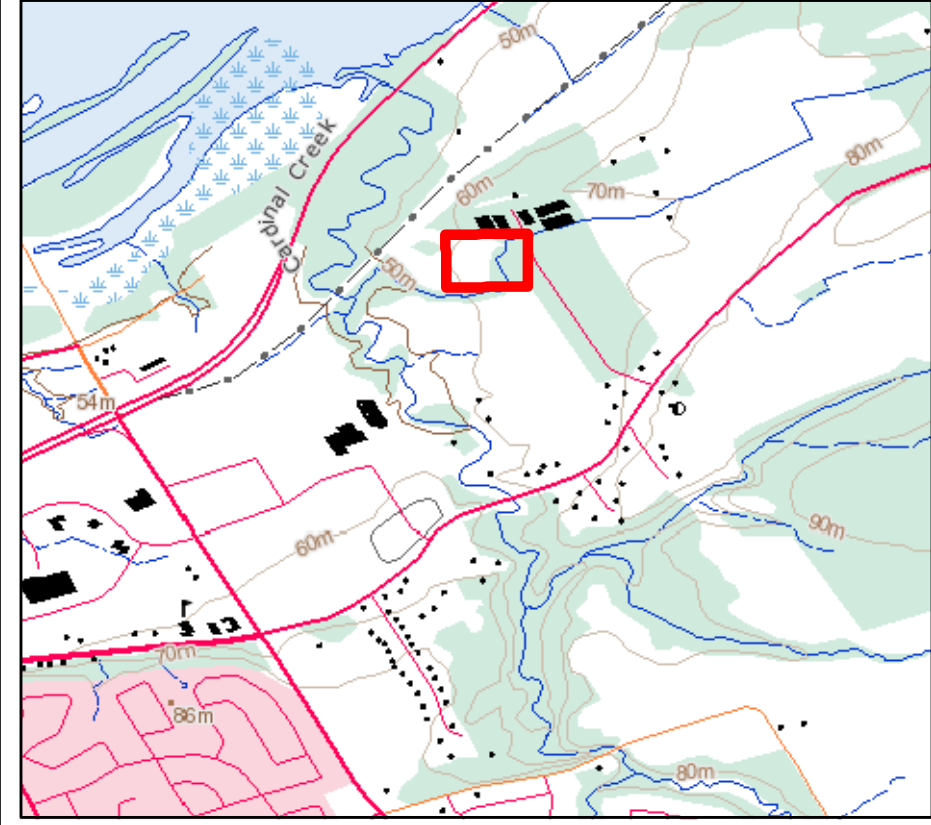
**Title:** **Archaeological Findspots:  
Operation 2**





# Legend

- Diagnostic Findspot
- ⬭ Artifact Scatter



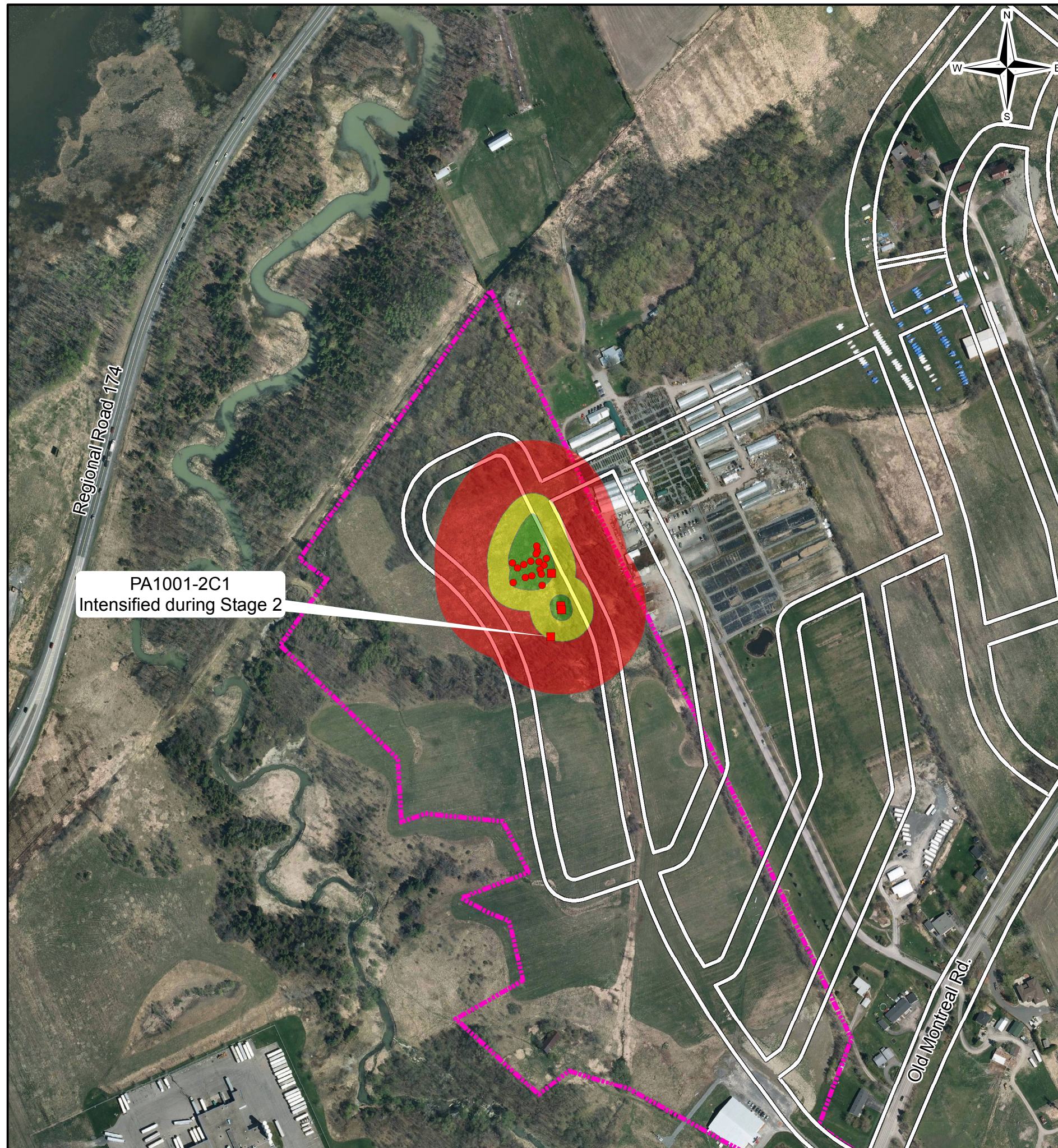
Reference:  
 Air Photo circa 2011 provided by DSEL Engineering  
 Topographic base provided by NRCAN WMS-Toporama

0 10 20 30 40  
 Meters  
 Scale 1:624  
 Projection: Transverse Mercator Datum NAD 83, UTM Zone 18

**Project:**  
 PA1001: Taggart - Cardinal Creek Village Proposed Development,  
 Township of Cumberland, City of Ottawa, Ontario

**Title:**  
 Artifact Scatter and  
 Site Area





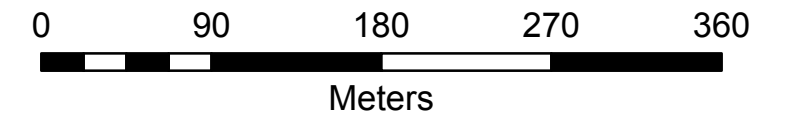
PA1001-2C1  
Intensified during Stage 2

## Legend

- Positive Shovel Test Pit
- Pedestrian Survey Diagnostic Findspot
- Stage 3 Site Area
- 20 m no-go buffer
- 50 m monitor buffer
- Proposed Road
- Study Area

### Reference:

Air Photo circa 2011 and proposed road development plan provided by DSEL Engineering



Scale 1:4,000

Projection: Transverse Mercator Datum NAD 83, UTM Zone 18

### Project:

PA1001: Taggart - Cardinal Creek Village Proposed Development,  
Township of Cumberland, City of Ottawa, Ontario

### Title:

Artifact Scatter, Buffers, and  
Stage 3 Area Recommendation