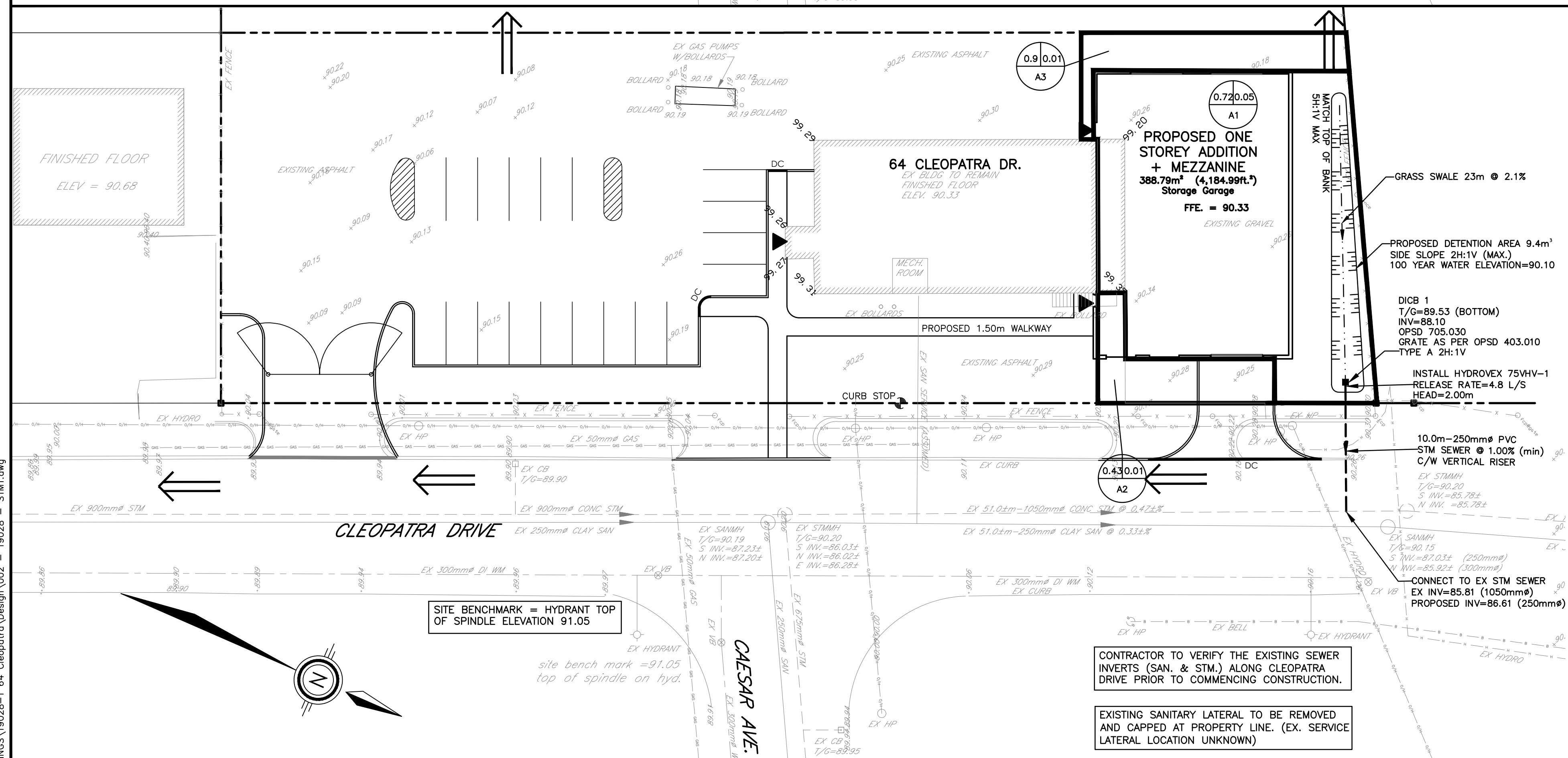
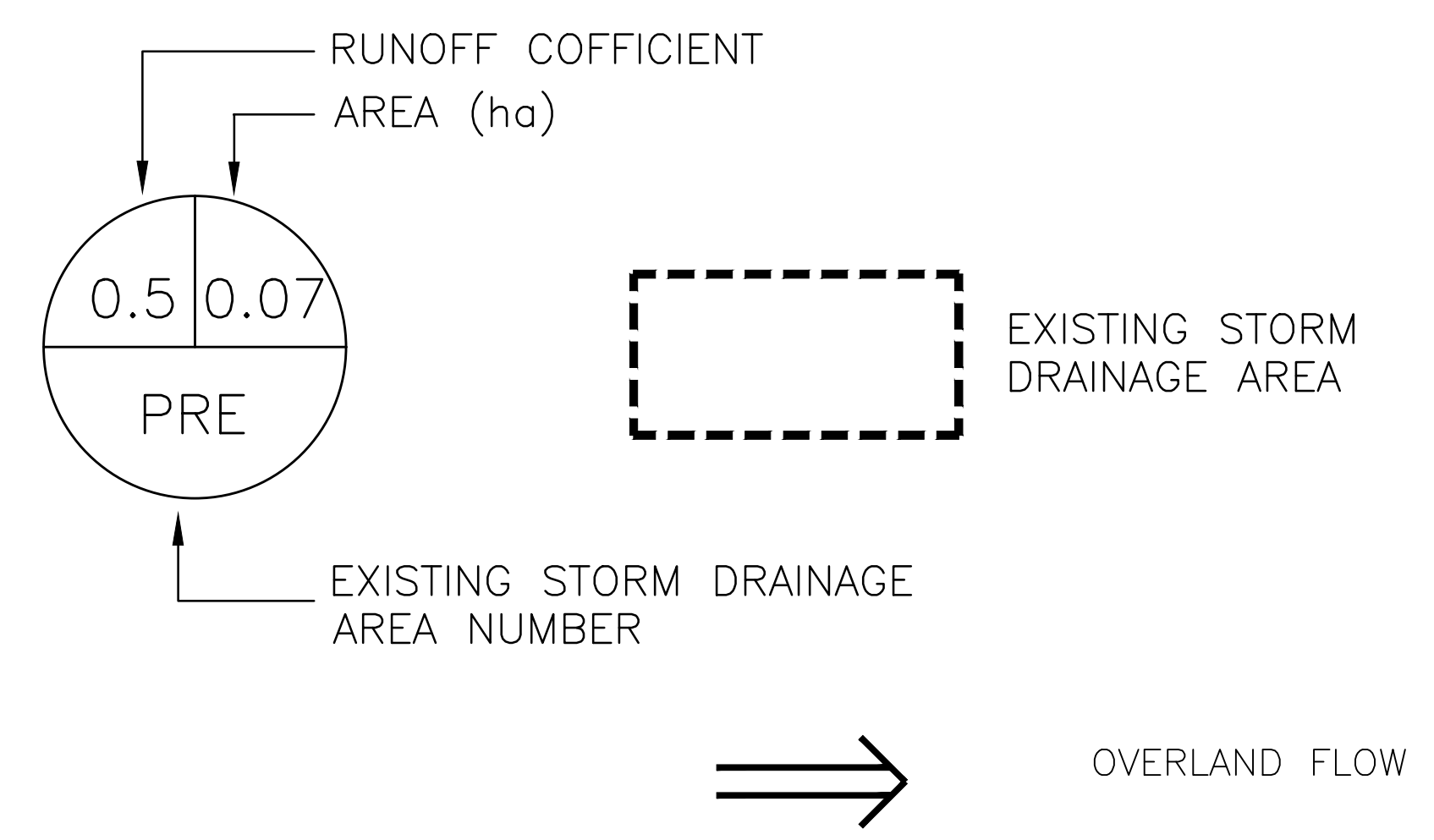
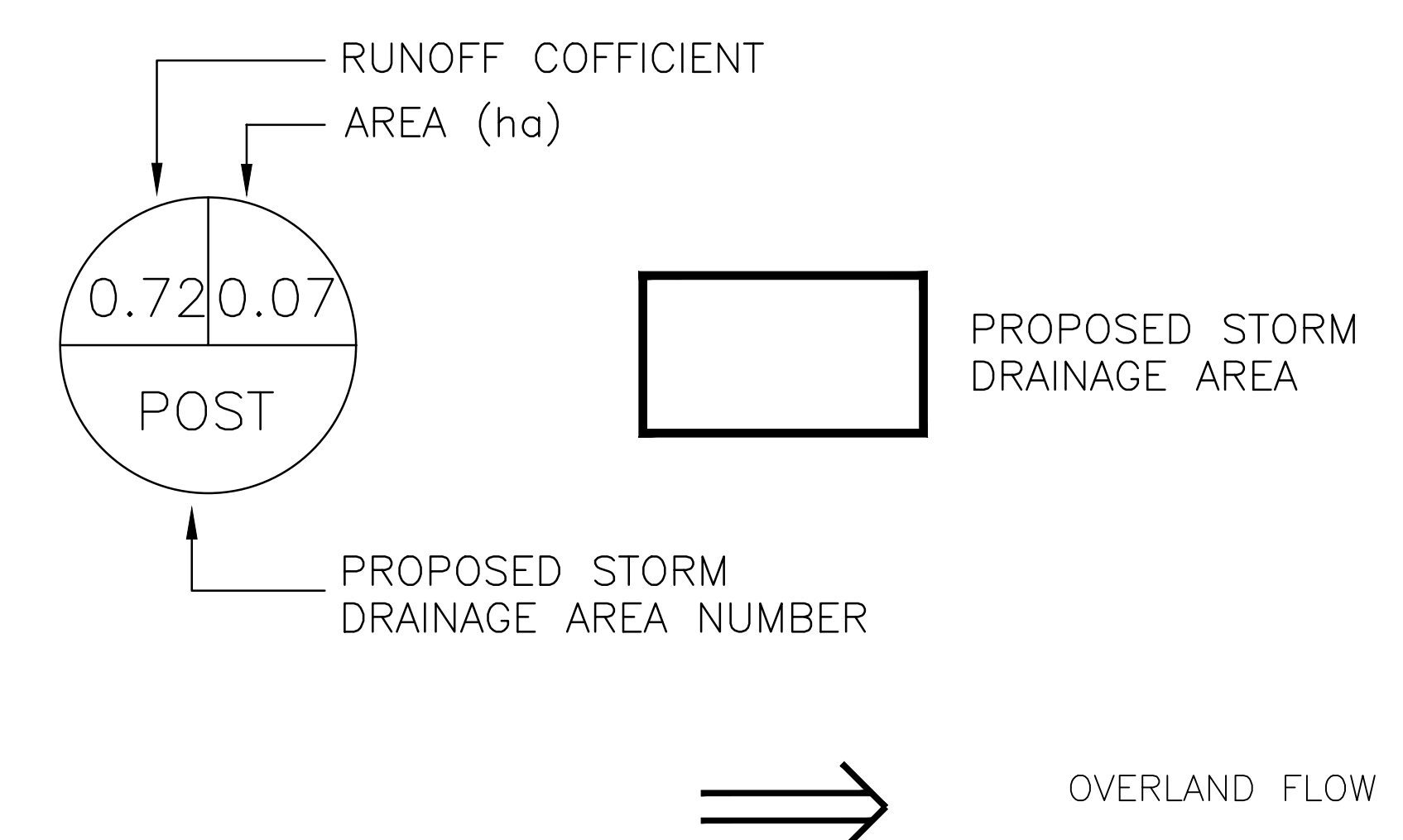


EXISTING STORM DRAINAGE AREA PLAN



PROPOSED STORM DRAINAGE AREA PLAN



NOTES

CONTRACTOR TO VERIFY THE EXISTING SEWER INVERTS (SAN. & STM.) ALONG CLEOPATRA DRIVE PRIOR TO COMMENCING CONSTRUCTION.

EXISTING SANITARY LATERAL TO BE REMOVED AND CAPPED AT PROPERTY LINE. (EX. SERVICE LATERAL LOCATION UNKNOWN)

| NO. | REVISIONS | DATE | INITIAL |
|-----|----------------------------------|------------|---------|
| 4 | RE-ISSUED FOR SITE PLAN APPROVAL | JAN 07/22 | JX |
| 3 | RE-ISSUED FOR SITE PLAN APPROVAL | JUNE 07/21 | JX |
| 2 | RE-ISSUED FOR SITE PLAN APPROVAL | JUNE 19/20 | JX |
| 1 | ISSUED FOR SITE PLAN APPROVAL | APR 26/19 | GSC |

Not Valid Unless Signed And Dated

Professional Engineers Ontario
 Professional Engineer
 Limited Licensee
 Name: JWX
 Number: 100171806
 Category: CIVIL see limitation
 Limitations:
 This license is subject to the limitations as detailed on the certificate.
 Association of Professional Engineers of Ontario

SCALE: 1 : 250
 DESIGN: JX
 DRAWN: MH
 CHECKED: GSC
 DATE: APRIL 2019

CITY OF OTTAWA
 64 CLEOPATRA DRIVE
 STORM DRAINAGE AREA PLAN

CONTRACT No. 19028 002-19028-STM1

Jan 03, 2022 1: D:\DRAWINGS\19028-1 64 Cleopatra\Design\002 - 19028 - STM1.dwg

City File No. D07-12-16-0029