

Plan of Survey of
 THE NORTHERLY AND EASTERLY
 LIMITS OF BLOCK 20
 REGISTERED PLAN 4M-1074
 Formerly City of Nepean
 NOW CITY OF OTTAWA
 Surveyed by
 ANNIS, O'SULLIVAN, VOLLEBEKK LTD.



Metric
 DISTANCES SHOWN ON THIS PLAN ARE IN METRES AND
 CAN BE CONVERTED TO FEET BY DIVIDING BY 0.3048

Surveyor's Certificate
 I CERTIFY THAT :
 1. This survey and plan are correct and in accordance with the
 Surveys Act, the Surveyors Act, the Land Titles Act and the
 regulations made under them.
 2. This survey was completed on the 16th day of July, 2004.

July 21/2004 Edward M. Lancaster, O.L.S.
 Date

Notes & Legend

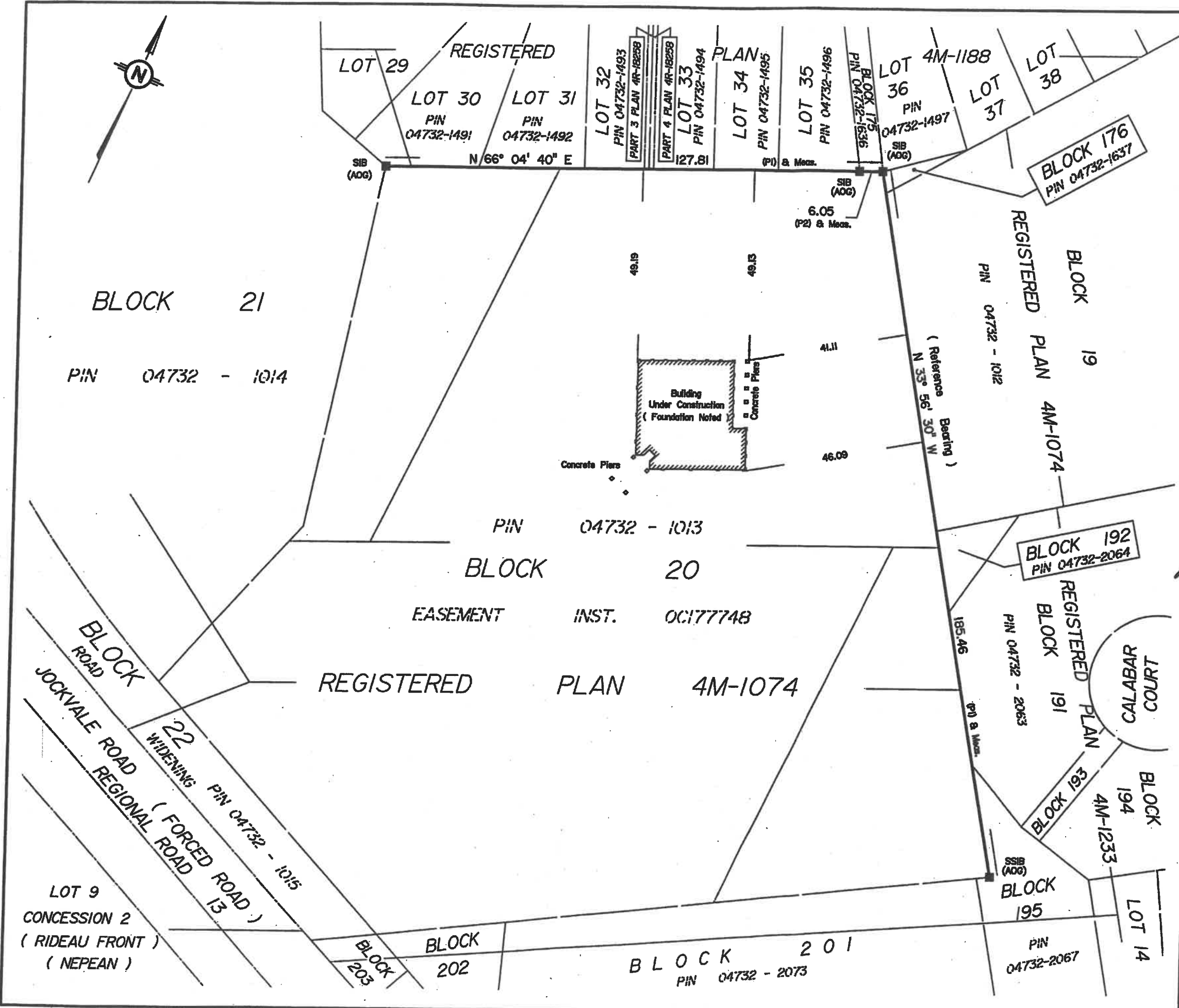
- Denotes Survey Monument Planted.
- " Survey Monument Found.
- SIB " Standard Iron Bar.
- SSIB " Short Standard Iron Bar.
- IB " Iron Bar.
- (WIT) " Witness.
- (AOG) " Annis, O'Sullivan, Vollebakk Ltd.
- (P1) " Registered Plan 4M-1074
- (P2) " Registered Plan 4M-1188

ASSOCIATION OF ONTARIO
 LAND SURVEYORS
 PLAN SUBMISSION FORM
 1516912

Bearings are astronomic, derived from the
 easterly limit of Block 20, shown to be
 N 33°56'30" W on Registered Plan 4M-1074.

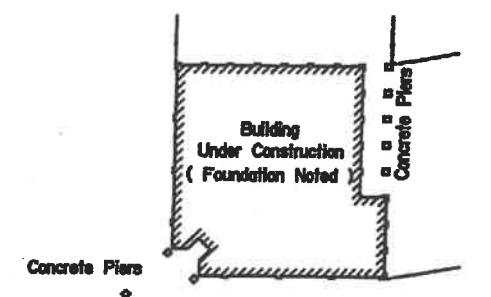
THIS PLAN IS NOT VALID UNLESS
 IT IS AN EMBOSSED ORIGINAL
 COPY ISSUED BY THE SURVEYOR
 IN ACCORDANCE WITH
 Regulation 825, Section 25(3).

ANNIS, O'SULLIVAN, VOLLEBEKK
 Ontario Land Surveyors
 14 CONCOURSE GATE, SUITE 500, NEPEAN, ONTARIO, K2E 7S6
 TEL.(613)727-0850 FAX(613)727-1079
 Job No. 4978-04



BLOCK 21
 PIN 04732 - 1014

REGISTERED PLAN 4M-1074
 LOT 29
 LOT 30 PIN 04732-1491
 LOT 31 PIN 04732-1492
 LOT 32 PIN 04732-1493
 PART 3 PLAN 4R-18258
 PART 4 PLAN 4R-18258
 LOT 33 PIN 04732-1494
 LOT 34 PIN 04732-1495
 LOT 35 PIN 04732-1496
 BLOCK 175 PIN 04732-1636
 LOT 36 PIN 04732-1497
 LOT 37
 LOT 38



BLOCK 20
 PIN 04732 - 1013
 EASEMENT INST. 0C177748
 REGISTERED PLAN 4M-1074

BLOCK 192
 PIN 04732-2064

REGISTERED PLAN 4M-1074
 BLOCK 191
 PIN 04732 - 2063

BLOCK 194
 REGISTERED PLAN 4M-1233
 BLOCK 195
 PIN 04732-2067

BLOCK ROAD
 JOCKVALE ROAD REGIONAL ROAD 13
 22 WIDENING (FORCED ROAD)
 PIN 04732 - 1015
 LOT 9
 CONCESSION 2
 (RIDEAU FRONT)
 (NEPEAN)

BLOCK 201
 PIN 04732 - 2073

BLOCK 202

BLOCK 203