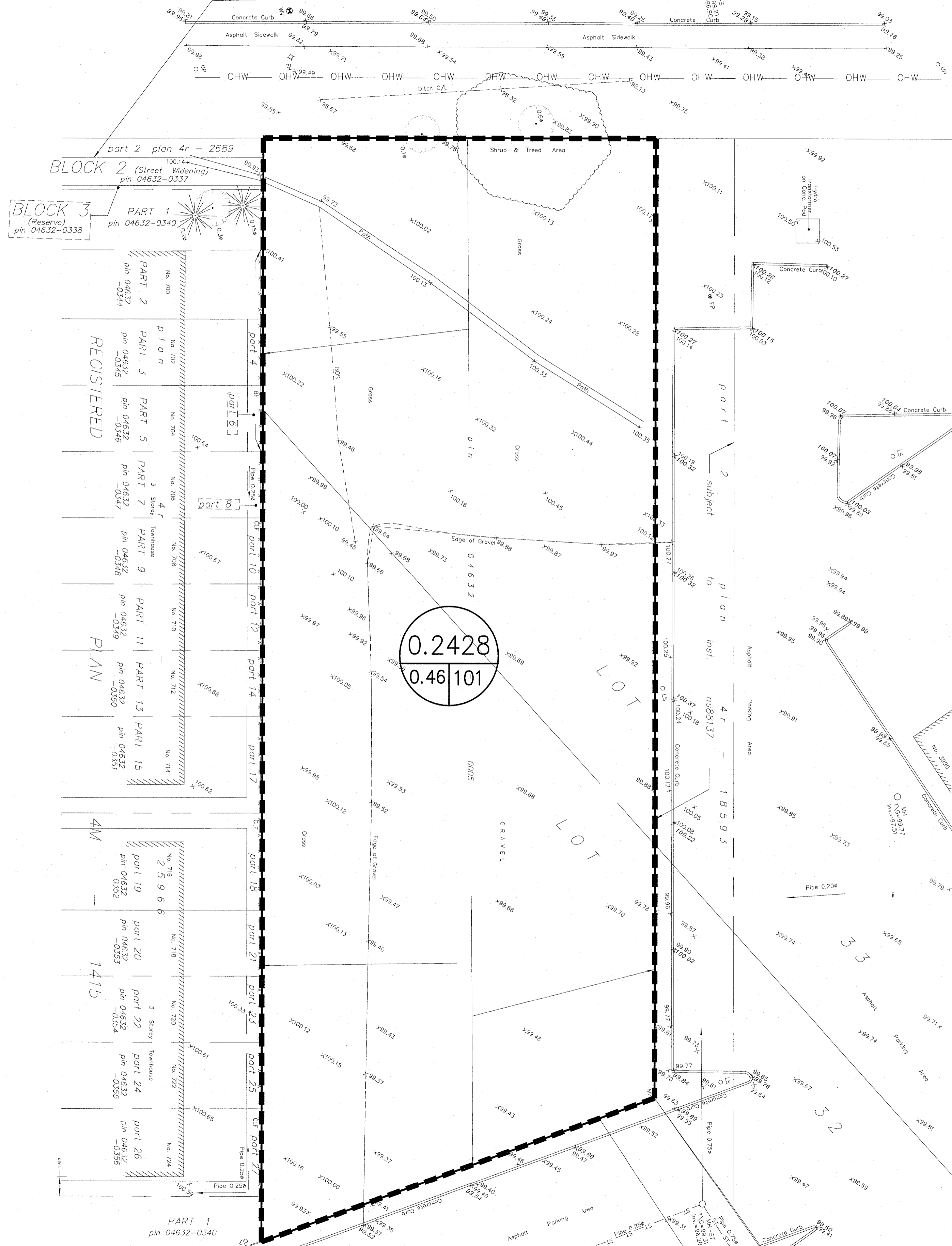


PRE - DEVELOPMENT STORM DRAINAGE AREA

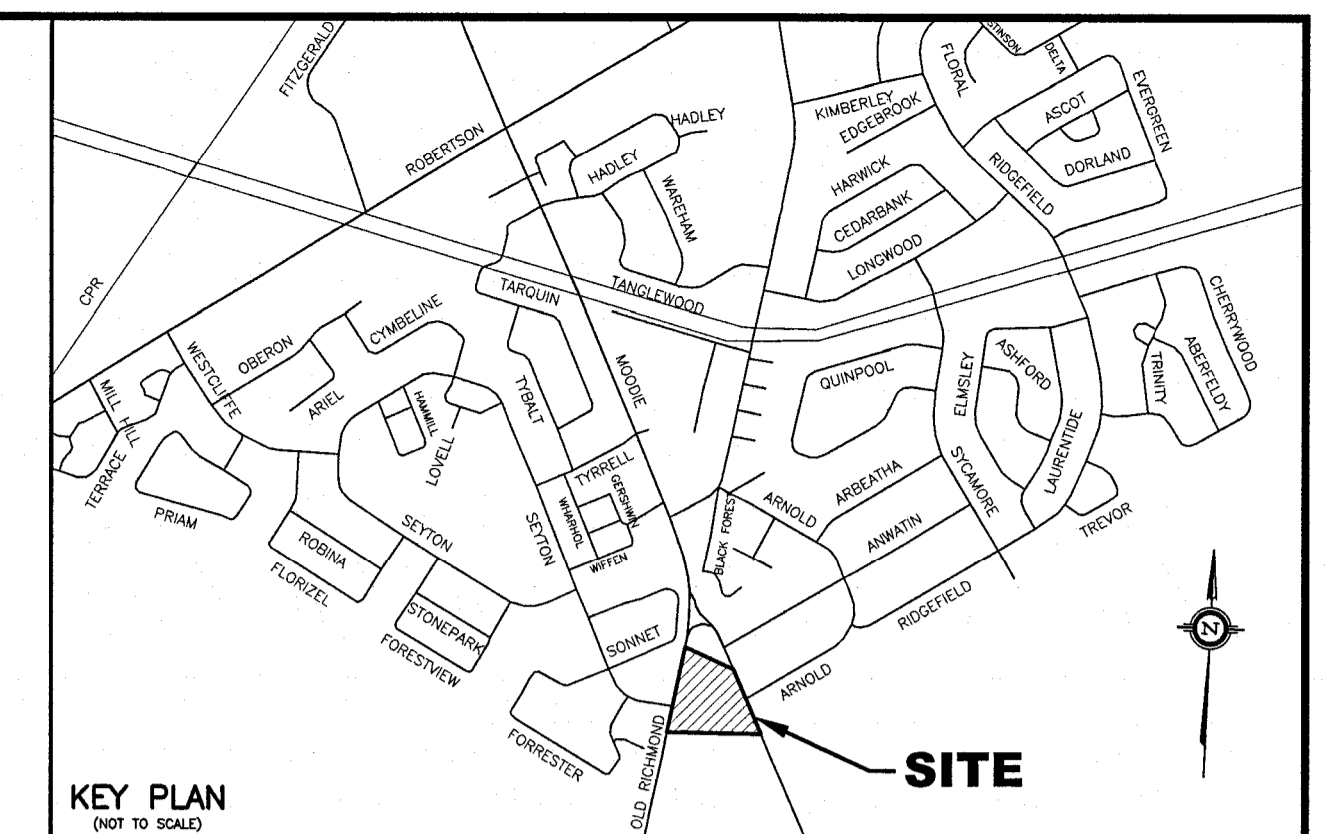
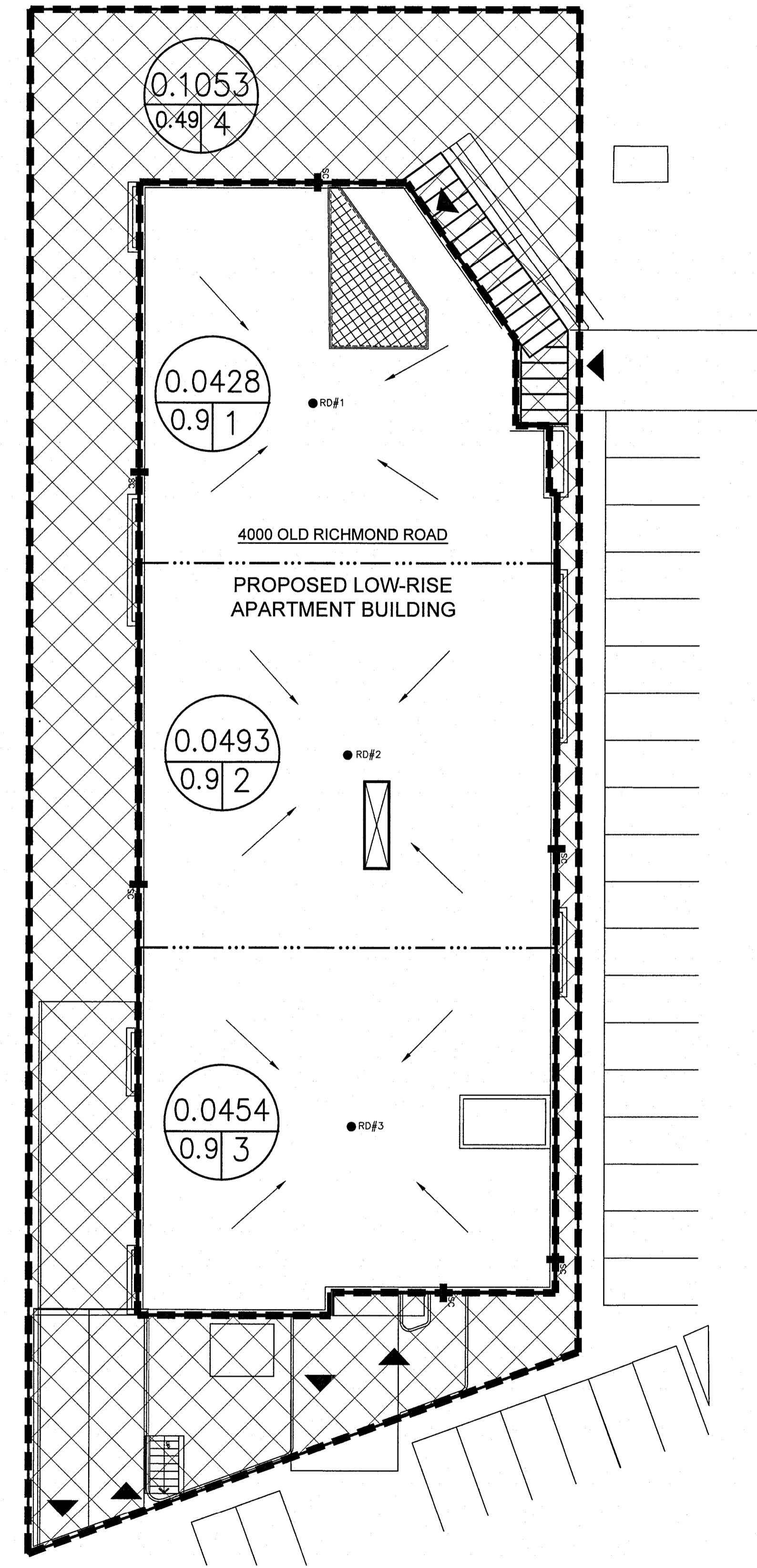
OLD RICHMOND ROAD REGIONAL ROAD No. 10

(as widened by by-law 1874, inst. cr508895)
p i n 0 4 6 3 2 - 0 2 8 9



POST DEVELOPMENT STORM DRAINAGE AREA

OLD RICHMOND ROAD



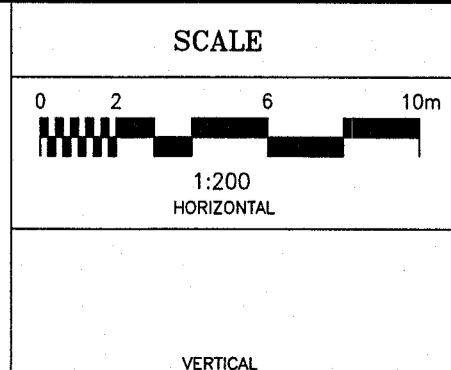
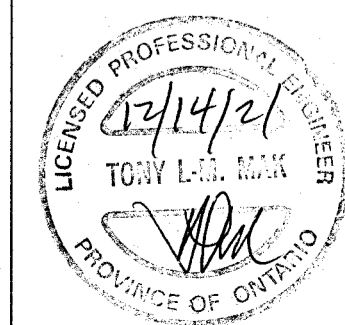
LEGEND

- RD#1 PROPOSED ROOF DRAIN NUMBER AND LOCATION
- PROPOSED HIGH RIDGE LINE
- - - - - DEVELOPMENT LOT LIMITS
- LIMIT OF STORM DRAINAGE AREA
- 0.002
0.9/2 DRAINAGE AREA IN HECTARES
DRAINAGE NODE NUMBER
- COEFFICIENT OF RUNOFF
- CONTROLLED DRAINAGE AREA
- ▨ UN-CONTROLLED DRAINAGE AREA

NOTE:

- NODE #1, #2 AND #3 REPRESENTS BUILDING ROOF AREA
- NODE #4 REPRESENTS UNCONTROLLED DRAINAGE AREA
- NODE #101 REPRESENTS PRE-DEVELOPMENT DATA.

| | | | |
|-----|----------------------------------|----------|-----|
| 1 | ISSUED FOR SITE PLAN APPLICATION | 12/14/21 | TLM |
| NO. | REVISION | DATE | BY |



| | |
|----------|--------|
| DESIGN | T.L.M. |
| CHECKED | T.L.M. |
| DRAWN BY | P.M. |
| CHECKED | T.L.M. |
| APPROVED | T.L.M. |

PROJECT
4000 OLD RICHMOND ROAD
PART OF LOTS 32 AND 33
CONCESSION 5 (RIDEAU FRONT)
GEOGRAPHIC TOWNSHIP OF NEPEAN
CITY OF OTTAWA

DRAWING TITLE
STORM DRAINAGE AREA PLAN

| | | |
|--|--------------------------|---------------------------|
| T.L. MAK ENGINEERING CONSULTANTS LTD. CONSULTING ENGINEERS | | |
| PROJECT No. 819-106 | DATE JULY 2021 | DRAWING No. D-1 |