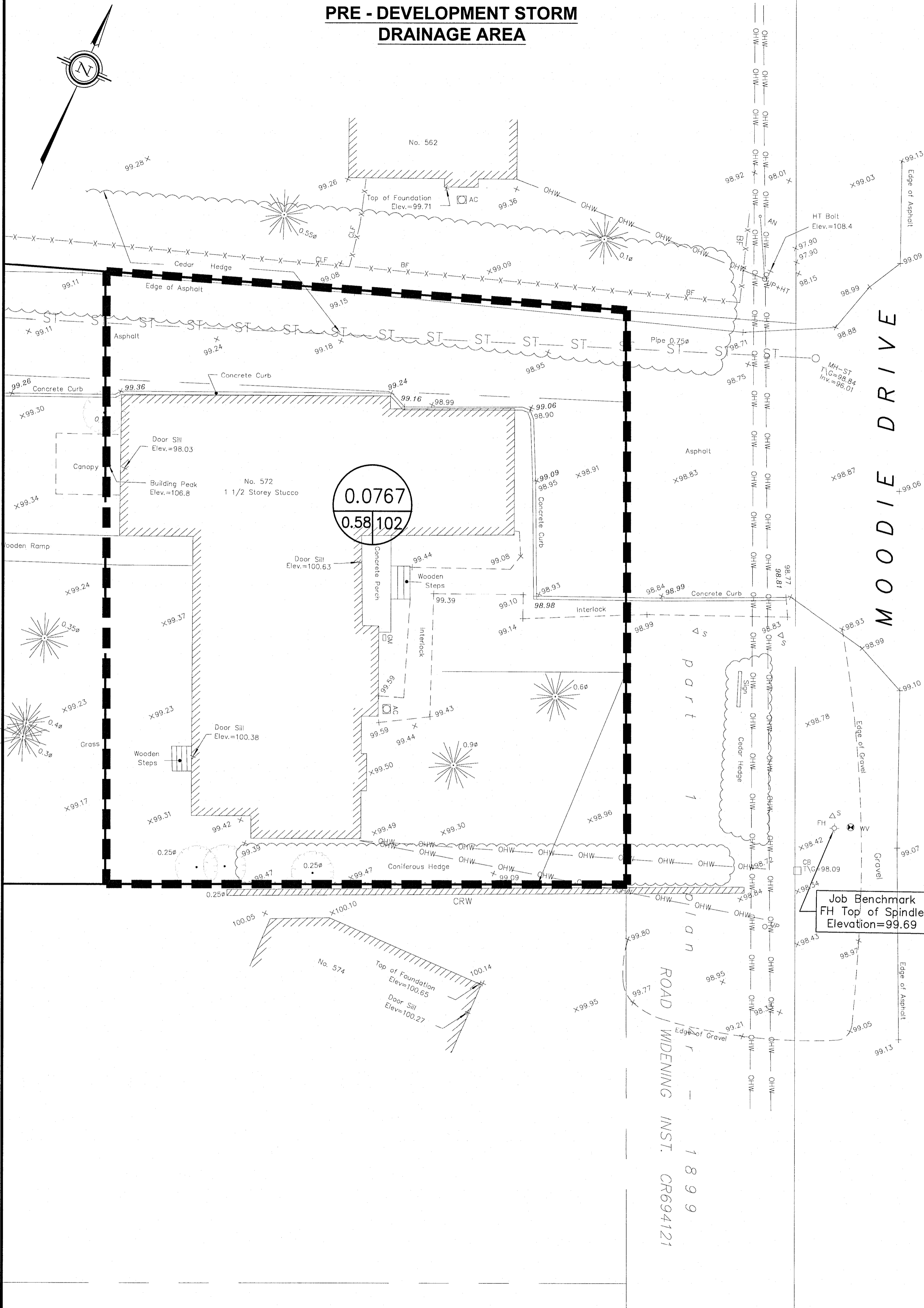
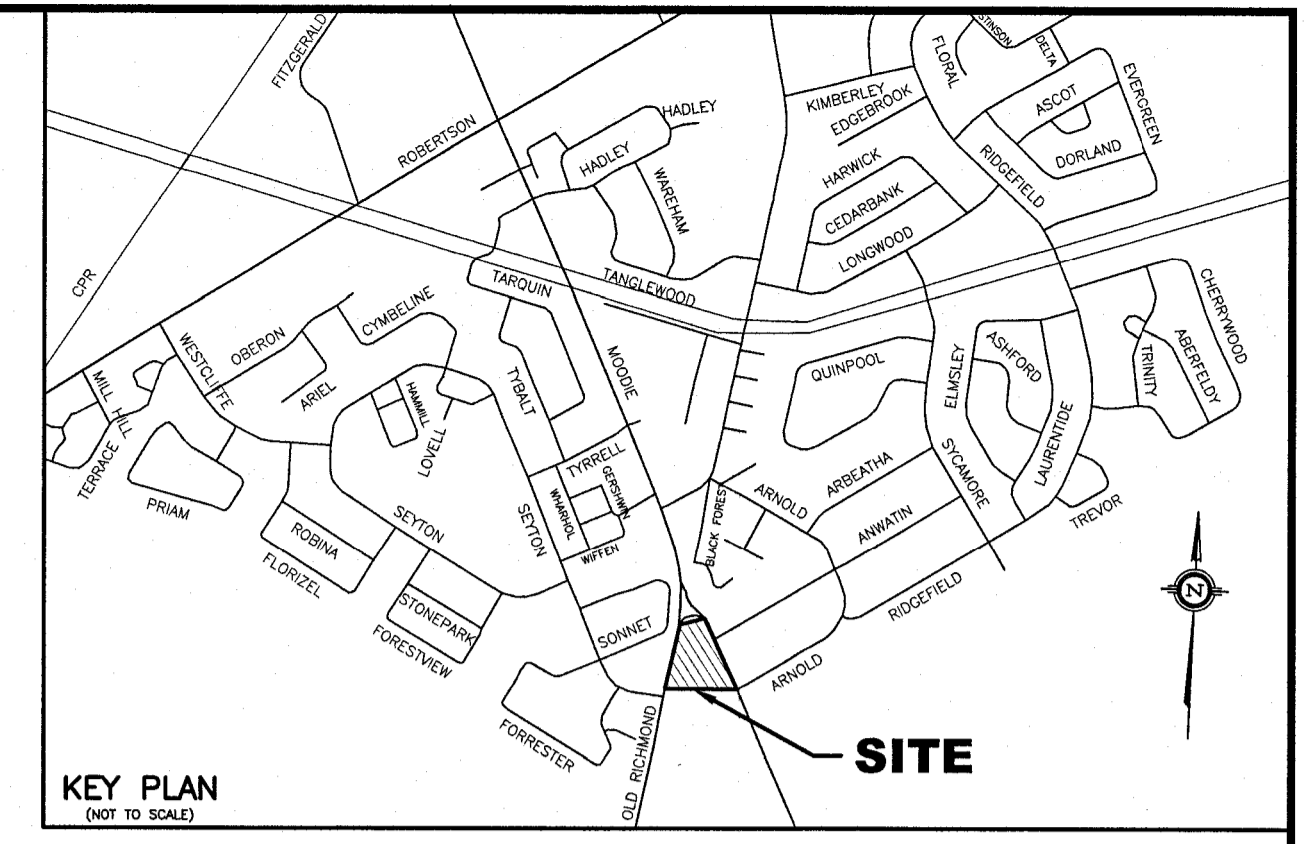
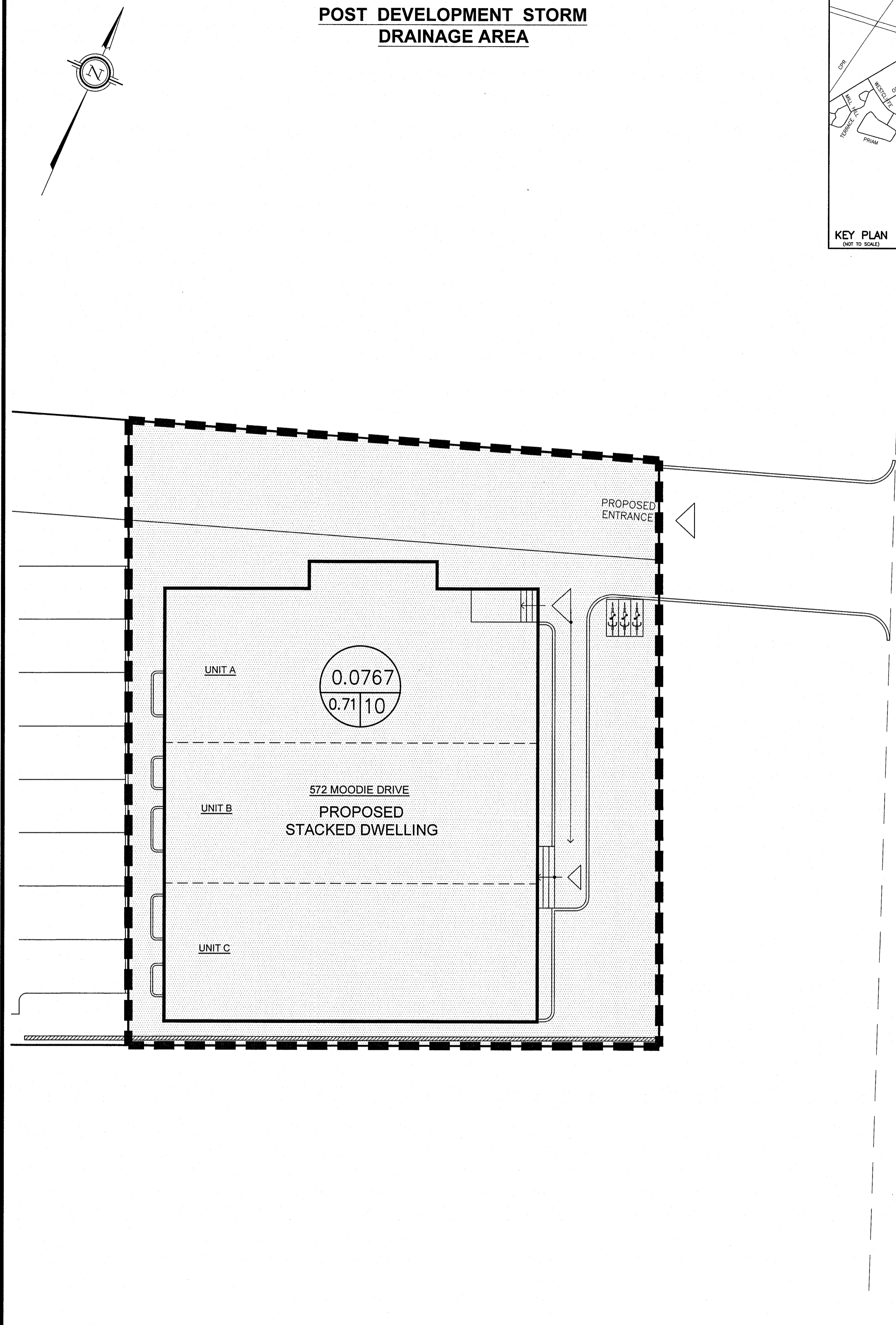


**PRE - DEVELOPMENT STORM DRAINAGE AREA**

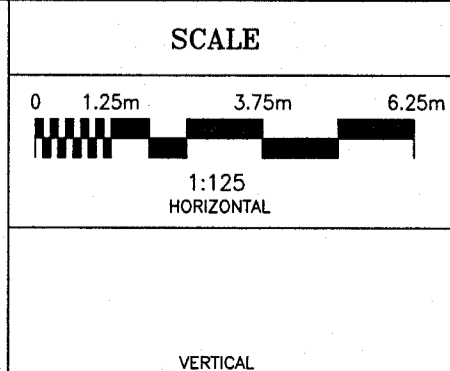
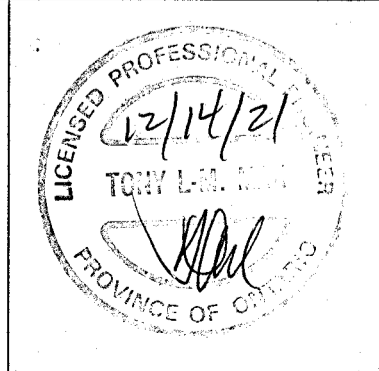


**POST DEVELOPMENT STORM DRAINAGE AREA**



- LEGEND**
- DEVELOPMENT LOT LIMITS
  - LIMIT OF STORM DRAINAGE AREA
  - 0.002 → DRAINAGE AREA IN HECTARES
  - 0.92 → DRAINAGE NODE NUMBER
  - → COEFFICIENT OF RUNOFF
  - ▨ UN-CONTROLLED DRAINAGE AREA

NO.	REVISION	DATE	BY
1	ISSUED FOR SITE PLAN APPLICATION	12/14/21	TLM



DESIGN	T.L.M.
CHECKED	T.L.M.
DRAWN BY	P.M.
CHECKED	T.L.M.
APPROVED	T.L.M.

PROJECT  
**572 MOODIE DRIVE**  
 PART OF LOTS 32 AND 33  
 CONCESSION 5 (RIDEAU FRONT)  
 GEOGRAPHIC TOWNSHIP OF NEPEAN  
 CITY OF OTTAWA

DRAWING TITLE  
**STORM DRAINAGE AREA PLAN**

PROJECT No.	DATE	DRAWING No.
819-106	JULY 2021	D-2