

EXISTING TREE LIST

KEY	QTY	BOTANICAL NAME	COMMON NAME	SIZE	CONDITION	REMARKS
TREES						
AB	1	Abies balsamea	Balsam Fir	400mm DBH	Good	To remain
AC	9	Acer sp.	Maple	150mm DBH	Good	To remain
BP	1	Betula papyrifera	White Birch	550mm DBH	Good	To remain
CR	3	Crataegus sp.	Hawthorn	200mm DBH	Good	To be removed
FR	1	Fraxinus sp.	Ash	100mm DBH	Good	To be removed
MA	1	Malus sp.	Crabapple	5x200mm DBH	Good	To remain
PD	1	Populus deltoides	Cottonwood	600mm DBH	Poor	To remain
PG	*	Picea glauca	White Spruce	200-400mm DBH	Fair-good	To remain
PI	9	Pinus strobus	White Pine	300-900mm DBH	Good	To be removed
PP	2	Picea pungens	Colorado Spruce	150mm DBH	Good	To remain
PS	1	Pinus sylvestris	Scots Pine	200mm DBH	Good	To remain
PT	*	Populus tremuloides	Trembling Aspen	100-400mm DBH	Fair-good	To remain
QR	3	Quercus rubra	Red Oak	250mm DBH	Good	To be removed
RT	5	Rhus typhina	Staghorn Sumac	100mm DBH	Good	To remain
SA	*	Salix sp.	Willow	100-300mm DBH	Fair-good	To remain
TO	*	Thuja occidentalis	Eastern White Cedar	100-300mm DBH	Good	See plan
UA	1	Ulmus americana	American Elm	300mm DBH	Dead	To remain

*DENOTES NUMEROUS

PROPOSED PLANT LIST

KEY	QTY	BOTANICAL NAME	COMMON NAME	SIZE	CONDITION	REMARKS
TREES						
CS	3	Picea pungens	Colorado Spruce	1.8m ht.	B&B	
GB	1	Ginkgo biloba	Maidenhair Tree	60mm cal.	B&B	Male tree
HL	6	Gleditsia inopurpurea	Honey Locust	60mm cal.	B&B	Single leader
JL	2	Syringa reticulata 'Ivory Silk'	Ivory Silk Japanese Tree Lilac	60mm cal.	B&B	Single Leader
WS	2	Picea glauca	White Spruce	1.8m ht.	B&B	

- ### GENERAL NOTES:
- It is the responsibility of the appropriate contractor or official to report any errors, omissions or discrepancies on this plan with actual site conditions to the Landscape Architect before proceeding with construction.
 - The contractor is to notify all utility companies and authorities prior to any excavation and ascertain locations of underground services.
 - The contractor is to restate all areas and items damaged as a result of construction activity.
 - The contractor is to comply with all pertinent codes and by-laws.
 - The contractor is to maintain a positive surface run-off throughout the entire construction period.
 - The Landscape Architect is not responsible for subsurface conditions.
 - The contractor is to identify all existing trees on site with the Landscape Architect prior to construction.
 - The contractor is to stake the proposed location of all plant material in conjunction with the Landscape Architect prior to excavation.
 - Minimum distances for selected deciduous trees are as follows:
 - Building Foundations 7.5m
 - Sidewalks 1.5m
 - Public Streets 2.5m
 - Underground Infrastructure 2.0m
 - All trees within 1m of underground utility trenches are to be excavated by hand.
 - Remove all protective wrapping from tree trunks after installation.
 - Staking of trees shall only be performed if necessary.
 - Ensure that mulch is pulled back a min. distance of 75mm from base of tree trunk.

CLIENT: **JAMI OMAR MOSQUE**

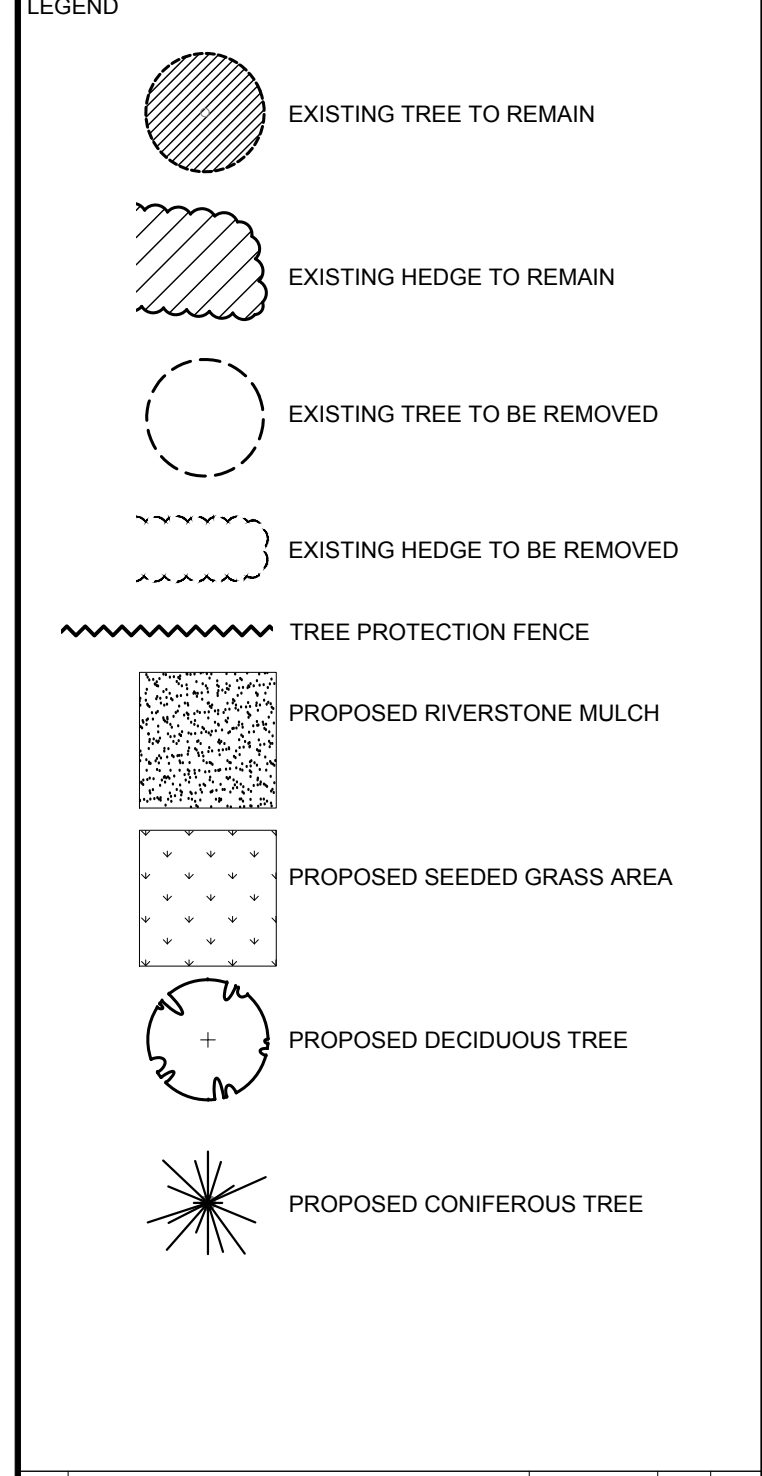
CONSULTANTS:

ARCHITECTS:

SUSAN D. SMITH ARCHITECT
841 METCALVE ROAD OTTAWA, ON K1Z 6A1
TEL: (613) 722-5227
S.DSMITH@SDAARCH.COM

SURVEYORS:

CIVIL ENGINEERS:

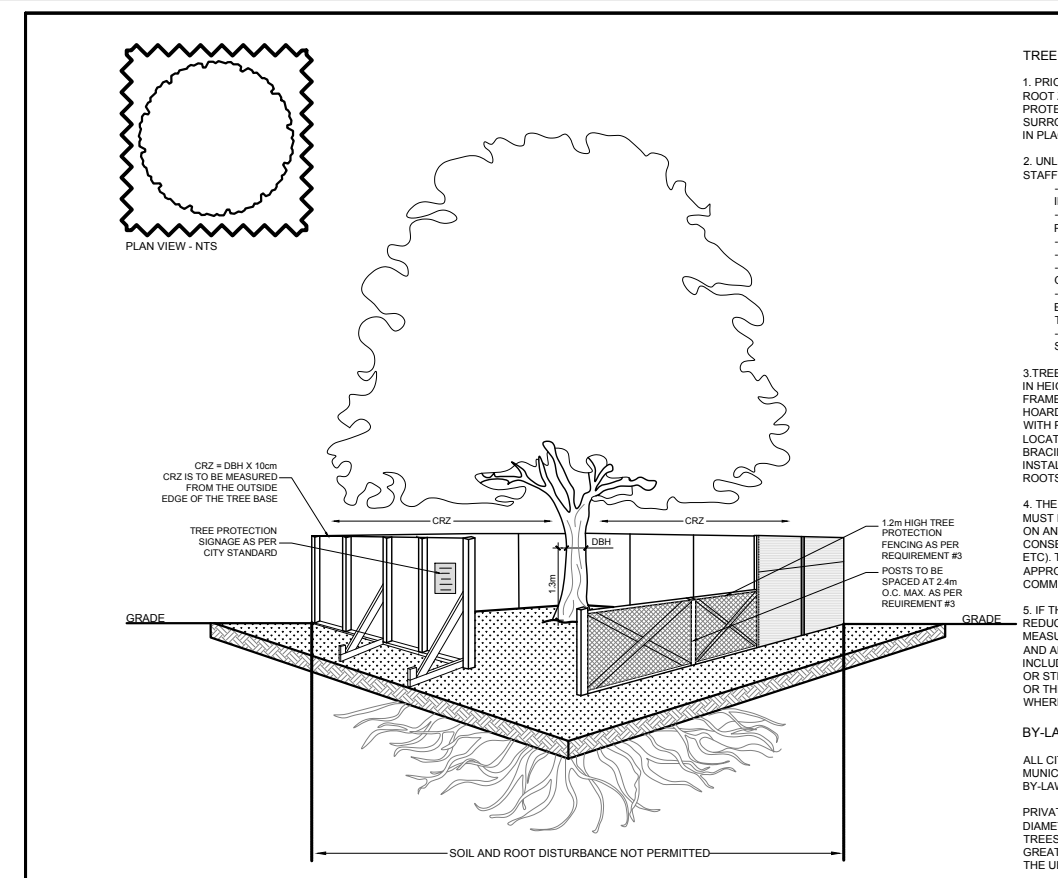


1	ISSUED FOR DISCUSSION AND REVIEW	03/11/2021	ML	JL
No.	Issue	Date	DR	CK

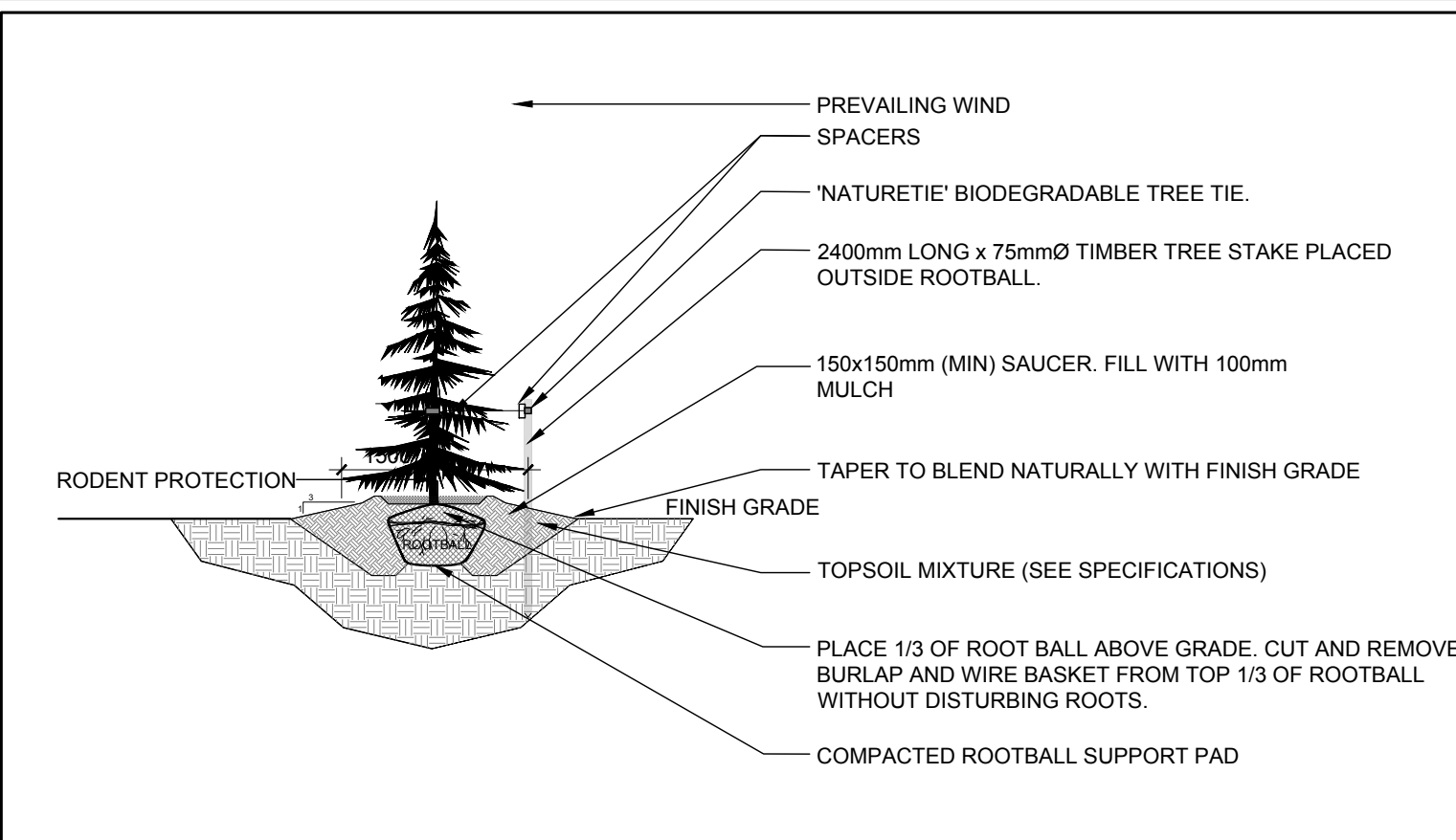
JAMES B. LENOX & ASSOCIATES INC.
LANDSCAPE ARCHITECTS
3332 CARLING AVE. OTTAWA, ONTARIO K2H 5A8
Tel: (613) 722-5168 Fax: (866) 343-3942

PROJECT:
LOW-RISE APARTMENT BUILDING 3990 OLD RICHMOND ROAD
STACKED DWELLING 572 MOODIE DRIVE
3990 OLD RICHMOND ROAD & 572 MOODIE DRIVE, OTTAWA ON

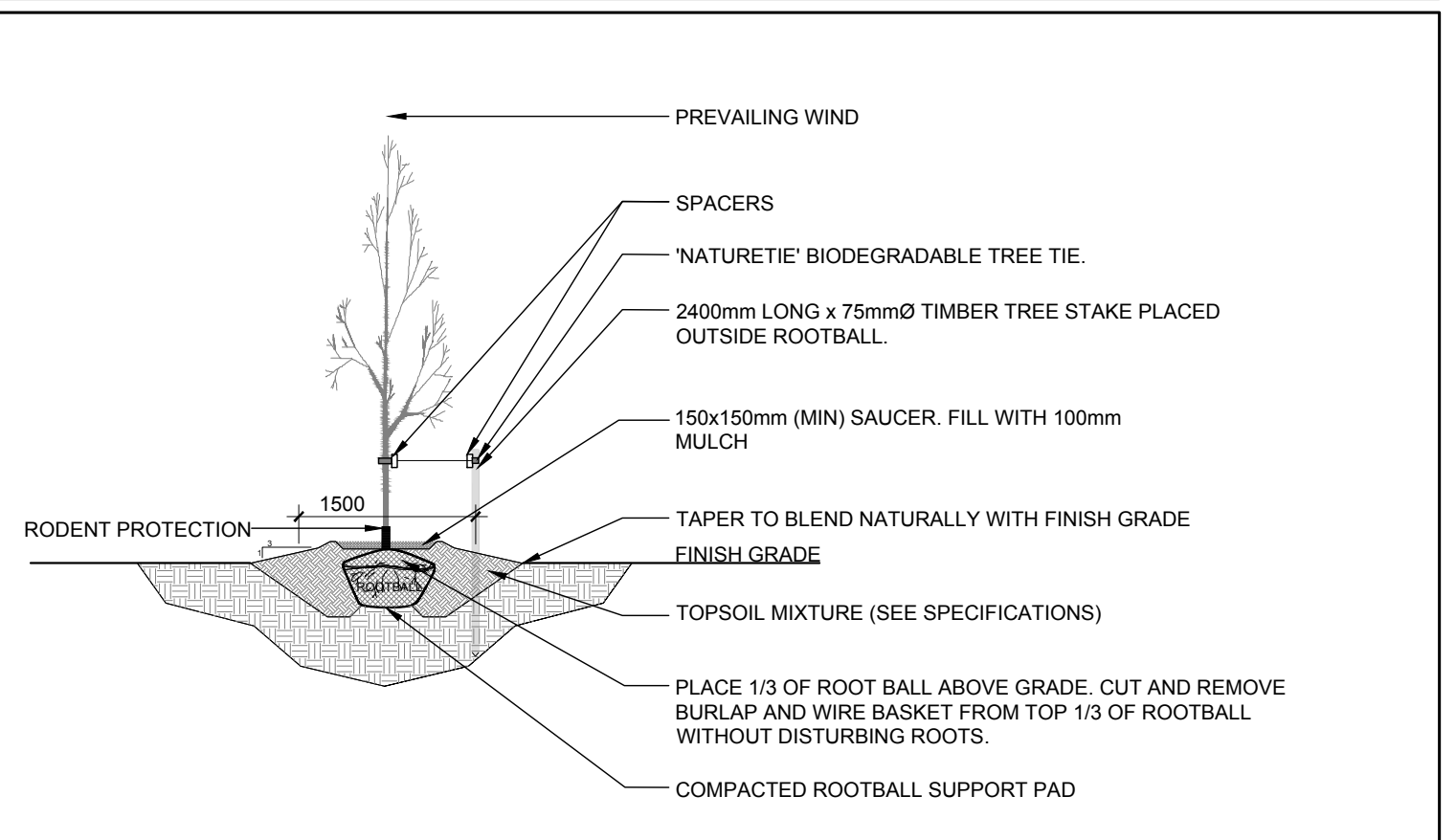
1 TREE CONSERVATION REPORT & LANDSCAPE PLAN
SCALE: 1:250



2 TREE PROTECTION FENCE
SCALE: NTS



3 CONIFEROUS TREE PLANTING
SCALE: NTS



4 DECIDUOUS TREE PLANTING
SCALE: NTS

STAMP: ASSOCIATION OF LANDSCAPE ARCHITECTS OF ONTARIO

SCALE: AS SHOWN

START DATE: MARCH 2021

PROJECT NO.: 21MIS2103

DRAWING NO.: L.1

PROJECT NORTH: QIBLA DIRECTION

PLOT SIZE ARCH-D