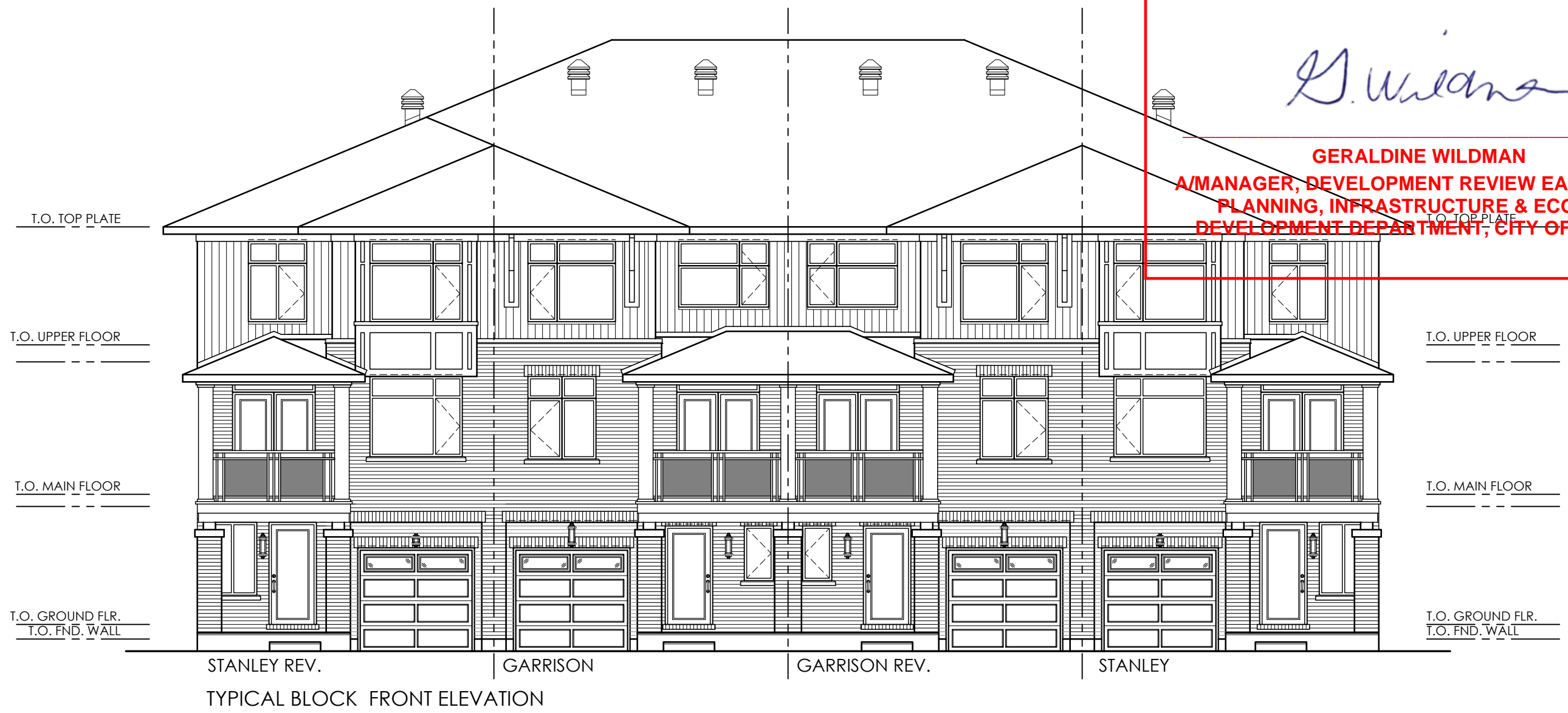


APPROVED
By Geraldine Wildman at 1:41 pm, Dec 06, 2021

G. Wildman

GERALDINE WILDMAN
A/MANAGER, DEVELOPMENT REVIEW EAST BRANCH
PLANNING, INFRASTRUCTURE & ECONOMIC
DEVELOPMENT DEPARTMENT, CITY OF OTTAWA



**M. David Blakely
Architect Inc.**
2200 Prince of Wales Dr. Suite 101 Nepean, Ontario
Phone (613) 226-8811 Fax (613) 226-7942

--	--	--	--	--

SEAL:

No.	DATE	DESCRIPTION	INIT.
1.	29/04/21	FOR SITE PLAN	SM
2.	25/06/21	AS PER CITY COMMENTS	SM
3.			
4.			
5.			
6.			
7.			
8.			
9.			
10.			

A - DETAIL NUMBER
B - SHEET NUMBER (DETAIL REQUIRED)
C - SHEET NUMBER (DETAIL LOCATION)

PROJECT: BACK to BACK TOWNS
TYP. BLOCKS 2,3,4,5,6,8,9 & 10
OTTAWA, ONTARIO

CLIENT: RICH CRAFT
Group of Companies

DRAWING TITLE: TYPICAL FRONT ELEVATION

DATE: APRIL, 2021. SCALE: 1/8"=1'-0"

DRAWN BY: SBM CHECKED: MDB

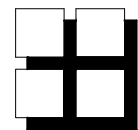
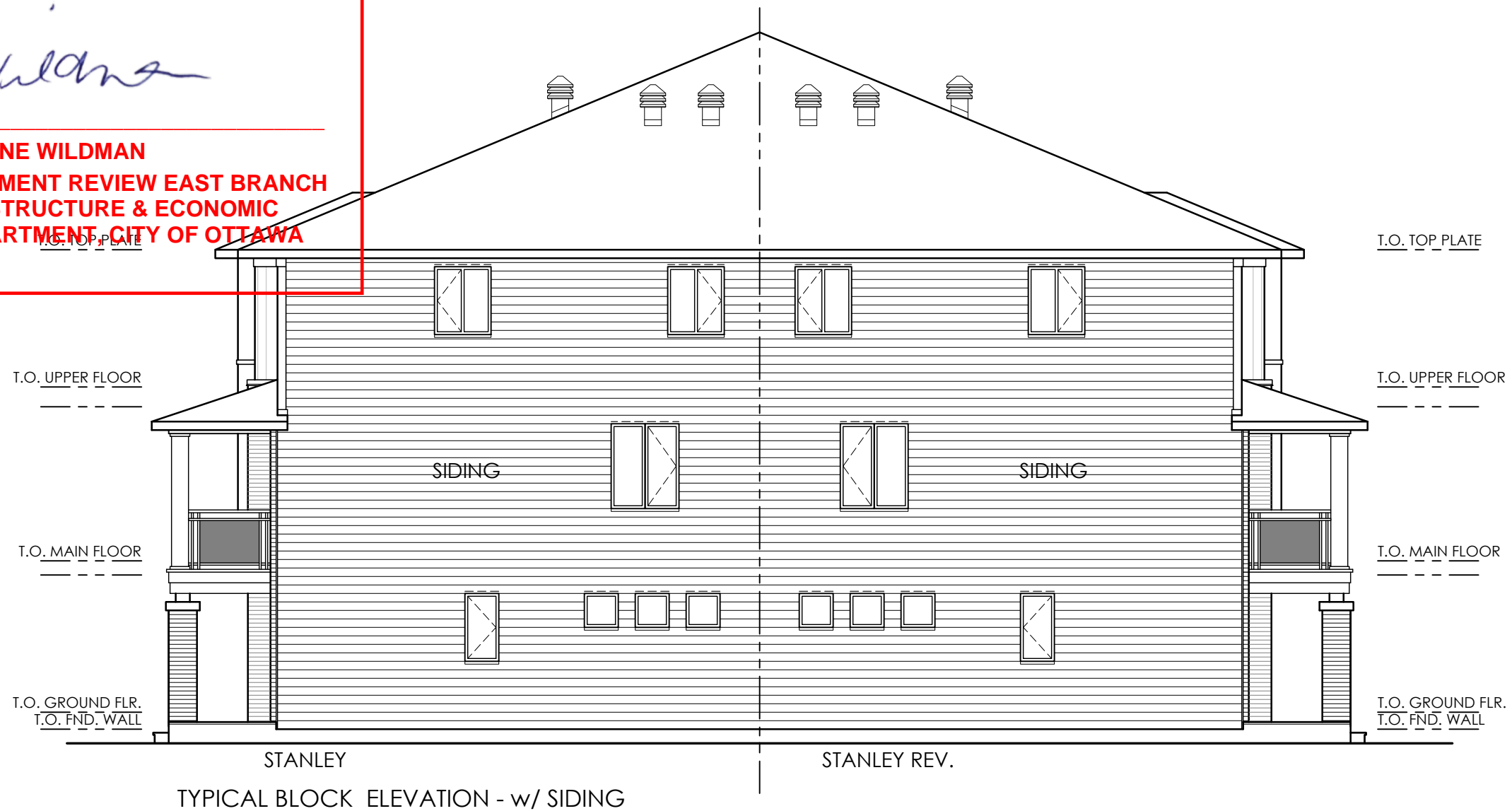
SHEET NO.: A1

APPROVED

By Geraldine Wildman at 1:52 pm, Dec 06, 2021

G. Wildman

**GERALDINE WILDMAN
 A/MANAGER, DEVELOPMENT REVIEW EAST BRANCH
 PLANNING, INFRASTRUCTURE & ECONOMIC
 DEVELOPMENT DEPARTMENT, CITY OF OTTAWA**

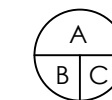


**M. David Blakely
 Architect Inc.**

2200 Prince of Wales Dr. Suite 101 Nepean, Ontario
 Phone (613) 226-8811 Fax (613) 226-7942

SEAL:

No.	DATE	DESCRIPTION	INIT.
10.			
9.			
8.			
7.			
6.			
5.			
4.			
3.			
2.	25/06/21	AS PER CITY COMMENTS	SM
1.	29/04/21	FOR SITE PLAN	SM
REVISIONS			



A - DETAIL NUMBER
 B - SHEET NUMBER (DETAIL REQUIRED)
 C - SHEET NUMBER (DETAIL LOCATION)

PROJECT: BACK to BACK TOWNS
 TYPICAL BLOCKS
 OTTAWA, ONTARIO

CLIENT: **RICHCRAFT**
 Group of Companies

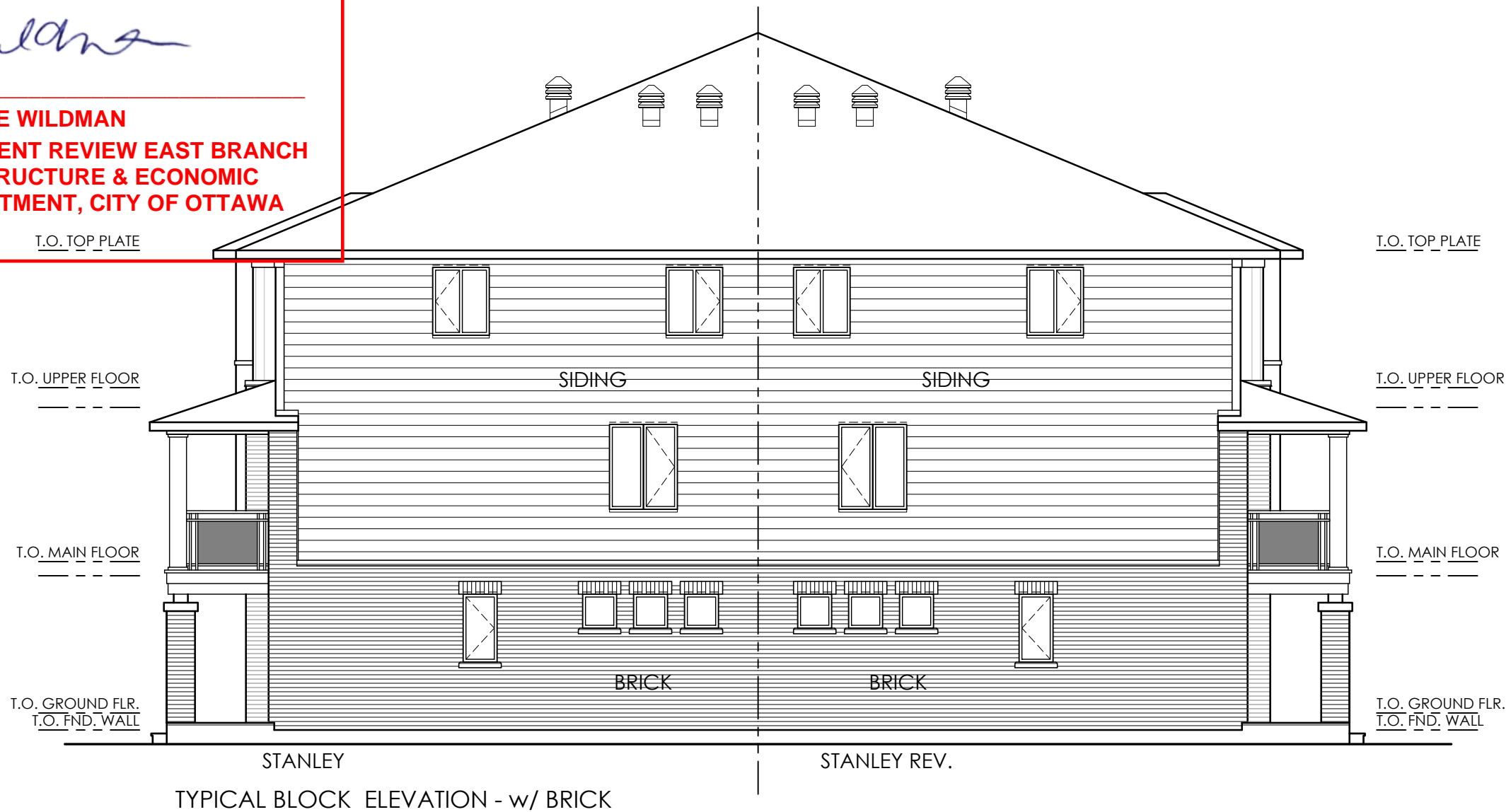
DRAWING TITLE: TYPICAL END ELEVATION
 w/ SIDING

DATE: APRIL, 2021. SCALE: 1/8"=1'-0" SHEET NO.:
 DRAWN BY: SBM CHECKED: MDB **A2**

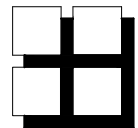
APPROVED

By Geraldine Wildman at 1:52 pm, Dec 06, 2021

GERALDINE WILDMAN
A/MANAGER, DEVELOPMENT REVIEW EAST BRANCH
PLANNING, INFRASTRUCTURE & ECONOMIC
DEVELOPMENT DEPARTMENT, CITY OF OTTAWA



TYPICAL BLOCK ELEVATION - w/ BRICK

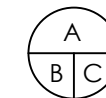


M. David Blakely
Architect Inc.

2200 Prince of Wales Dr. Suite 101 Nepean, Ontario
Phone (613) 226-8811 Fax (613) 226-7942

SEAL:

No.	DATE	DESCRIPTION	INIT.
10.			
9.			
8.			
7.			
6.			
5.			
4.			
3.			
2.	25/06/21	AS PER CITY COMMENTS	SM
1.	29/04/21	FOR SITE PLAN	SM
REVISIONS			



A - DETAIL NUMBER
B - SHEET NUMBER (DETAIL REQUIRED)
C - SHEET NUMBER (DETAIL LOCATION)

PROJECT: BACK to BACK TOWNS
BLOCK 8
OTTAWA, ONTARIO

CLIENT: RICH CRAFT
Group of Companies

DRAWING TITLE: TYPICAL END ELEVATION
w/ HALF BRICK

DATE: APRIL, 2021.	SCALE: 1/8"=1'-0"	SHEET NO.: A3
DRAWN BY: SBM	CHECKED: MDB	

APPROVED

By Geraldine Wildman at 1:52 pm, Dec 06, 2021

G. Wildman

**GERALDINE WILDMAN
A/MANAGER, DEVELOPMENT REVIEW EAST BRANCH
PLANNING, INFRASTRUCTURE & ECONOMIC
DEVELOPMENT DEPARTMENT, CITY OF OTTAWA**

T.O. TOP PLATE

T.O. UPPER FLOOR

T.O. MAIN FLOOR

T.O. GROUND FLR.
T.O. FND. WALL



T.O. TOP PLATE

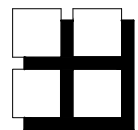
T.O. UPPER FLOOR

T.O. MAIN FLOOR

T.O. GROUND FLR.
T.O. FND. WALL

STANLEY CORNER
TYPICAL BLOCK ELEVATION

STANLEY CORNER REV.

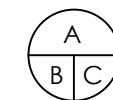


**M. David Blakely
Architect Inc.**

2200 Prince of Wales Dr. Suite 101 Nepean, Ontario
Phone (613) 226-8811 Fax (613) 226-7942

SEAL:

No.	DATE	DESCRIPTION	INIT.
10.			
9.			
8.			
7.			
6.			
5.			
4.			
3.			
2.	25/06/21	AS PER CITY COMMENTS	SM
1.	29/04/21	FOR SITE PLAN	SM
REVISIONS			



A - DETAIL NUMBER
B - SHEET NUMBER
(DETAIL REQUIRED)
C - SHEET NUMBER
(DETAIL LOCATION)

PROJECT: BACK to BACK TOWNS
TYPICAL BLOCKS 1,7&11
OTTAWA, ONTARIO

CLIENT: **RICHCRAFT**
Group of Companies

DRAWING TITLE: TYPICAL END ELEVATION

DATE: APRIL, 2021
DRAWN BY: SBM

SCALE: 1/8"=1'-0"
CHECKED: MDB

SHEET NO.: **A4**