

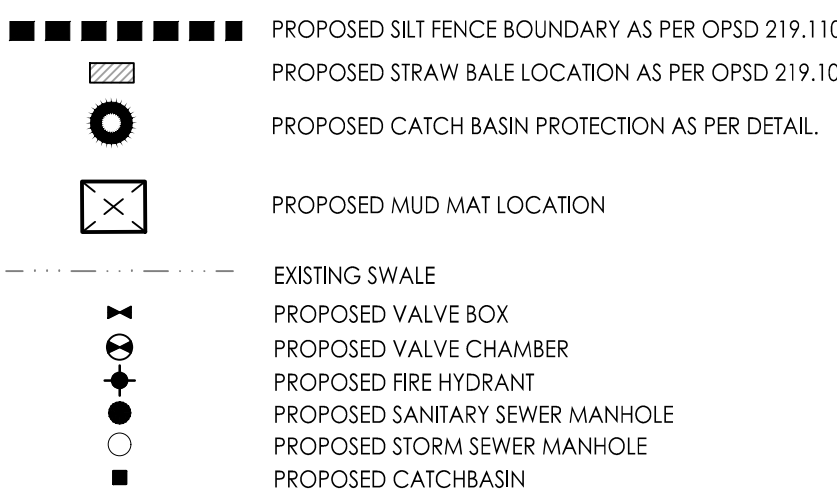


Copyright Reserved

The Contractor shall verify and be responsible for all dimensions. DO NOT scale the drawing - any errors or omissions shall be reported to Stantec without delay.

The Copyrights to all designs and drawings are the property of Stantec. Reproduction or use for any purpose other than that authorized by Stantec is forbidden.

Legenc



Best Management Practices

CONTRACTOR TO PROVIDE EROSION AND SEDIMENT CONTROLS (BEST MANAGEMENT PRACTICES) DURING CONSTRUCTION OF THIS PROJECT.

EROSION MUST BE MINIMIZED AND SEDIMENTS MUST BE REMOVED FROM CONSTRUCTION UN-OFF IN ORDER TO PROTECT DOWNSTREAM AREAS. DURING ALL CONSTRUCTION, EROSION AND SEDIMENTATION SHOULD BE CONTROLLED BY THE FOLLOWING TECHNIQUES:

- LIMIT THE EXTENT OF EXPOSED SOILS AT ANY GIVEN TIME.
- REVEGETATE EXPOSED AREAS AND SLOPES AS SOON AS POSSIBLE.
- MINIMIZE AREA TO BE CLEARED AND GRUBBED.
- PROTECT EXPOSED SLOPES WITH PLASTIC OR SYNTHETIC MULCHES.
- INSTALL CATCH BASIN INSERTS OR EQUIVALENT IN ALL PROPOSED CATCH BASINS & CATCH BASIN MANHOLES AND IN ALL EXISTING CATCH BASINS THAT WILL RECEIVE RUN-OFF FROM THE SITE.
- A SILT FENCE SHALL BE INSTALLED ALONG THE PERIMETER OF ALL AND ANY STOCKPILING OF MATERIAL TO BE USED OR REMOVED FROM SITE. (LOCATION TO BE DETERMINED).
- A VISUAL INSPECTION SHALL BE DONE DAILY ON SEDIMENT CONTROL MEASURES & CLEAN UP OF ANY ACCUMULATED SOIL AS REQUIRED. DEPOSITS WILL BE DISPOSED OFF SITE AS PER THE REQUIREMENTS OF THE CONTRACT.

SEDIMENT CONTROL BARRIERS MAY ONLY BE REMOVED TEMPORARILY WITH APPROVAL OF CONTRACT ADMINISTRATOR TO ACCOMMODATE CONSTRUCTION OPERATIONS. AFFECTED BARRIERS MUST BE REINSTITATED AT NIGHT WHEN CONSTRUCTION IS COMPLETED. NO REMOVAL WILL OCCUR IF THERE IS A SIGNIFICANT RAINFALL EVENT ANTICIPATED (>10mm) UNLESS A NEW DEVICE HAS BEEN INSTALLED TO PROTECT EXISTING STORM AND SANITARY SEWER SYSTEMS, OR DOWNSTREAM WATERCOURSE.

- NO REFUELING OR CLEANING OF EQUIPMENT IS PERMITTED NEAR ANY EXISTING WATERWAY.
3. CONTRACTOR SHALL REMOVE SEDIMENT CONTRACT MEASURES WHEN, IN THE OPINION OF THE CONTRACT ADMINISTRATOR, THE MEASURE(S) IS NO LONGER REQUIRED. NO CONTRACT MEASURES SHALL BE PERMANENTLY REMOVED WITHOUT PRIOR WRITTEN AUTHORIZATION FROM THE CONTRACT ADMINISTRATOR.
4. THE CONTRACTOR SHALL PERIODICALLY, OR WHEN REQUESTED BY THE CONTRACT ADMINISTRATOR, CLEAN OUT ACCUMULATED SEDIMENTS AS REQUIRED.
5. THE CONTRACTOR SHALL IMMEDIATELY REPORT TO THE ENGINEER ANY ACCIDENTAL DISCHARGES OF SEDIMENT MATERIAL INTO THE WATERCOURSE. APPROPRIATE RESPONSE MEASURES, INCLUDING ANY REPAIRS TO EXISTING CONTRACT MEASURES, THE IMPLEMENTATION OF ADDITIONAL CONTRACT MEASURES, SHALL BE CARRIED OUT BY THE CONTRACTOR WITHOUT DELAY.
6. CONTRACTOR SHALL INSTALL MUD MATS AT ENTRANCE TO THE SITE.

STORMWATER SWALES TO BE COVERED WITH HYDRO-SEED AND MULCH.			
5	RELOCATION OF HYDRANTS	JP	GR 21.12.01
4	ISSUED FOR SPA	JP	DT 21.11.11
3	ISSUED FOR SPA	JP	DT 21.09.09
2	ISSUED FOR SPA	JP	DT 21.04.30
1	ISSUED FOR SPA	JP	DT 20.12.12
Revision		By	Appd. YY.MM.DD

File Name: 160401585-DB	JP	DT/SG	JP	20.11.06
	Dwn.	Chkd.	Dsn.	YY.MM.DD

Permit-Sea

Client/Project

RICHCRAFT GROUP OF COMPANIES
2280 ST. LAURENT BLVD
PROPOSED RESIDENTIAL DEVELOPMENT
TRAILSEDGE BLOCK 193 & 194
OTTAWA, ON

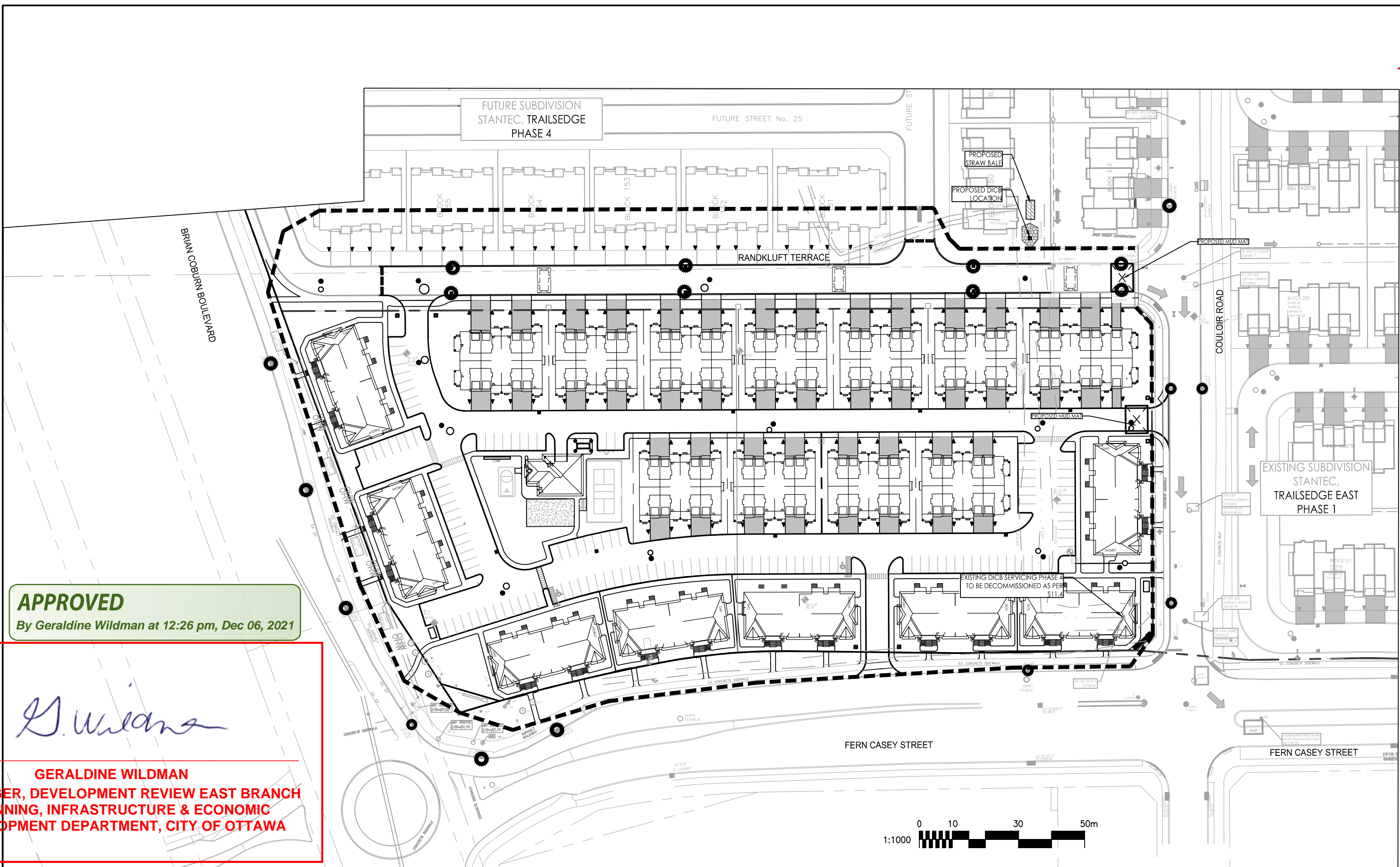
Title
EROSION CONTROL PLAN
AND DETAILS SHEET

Project No.	Scale
142421525	

Drawing No.	Sheet	Revision
-------------	-------	----------

EC/DS-1 7 of 11 5

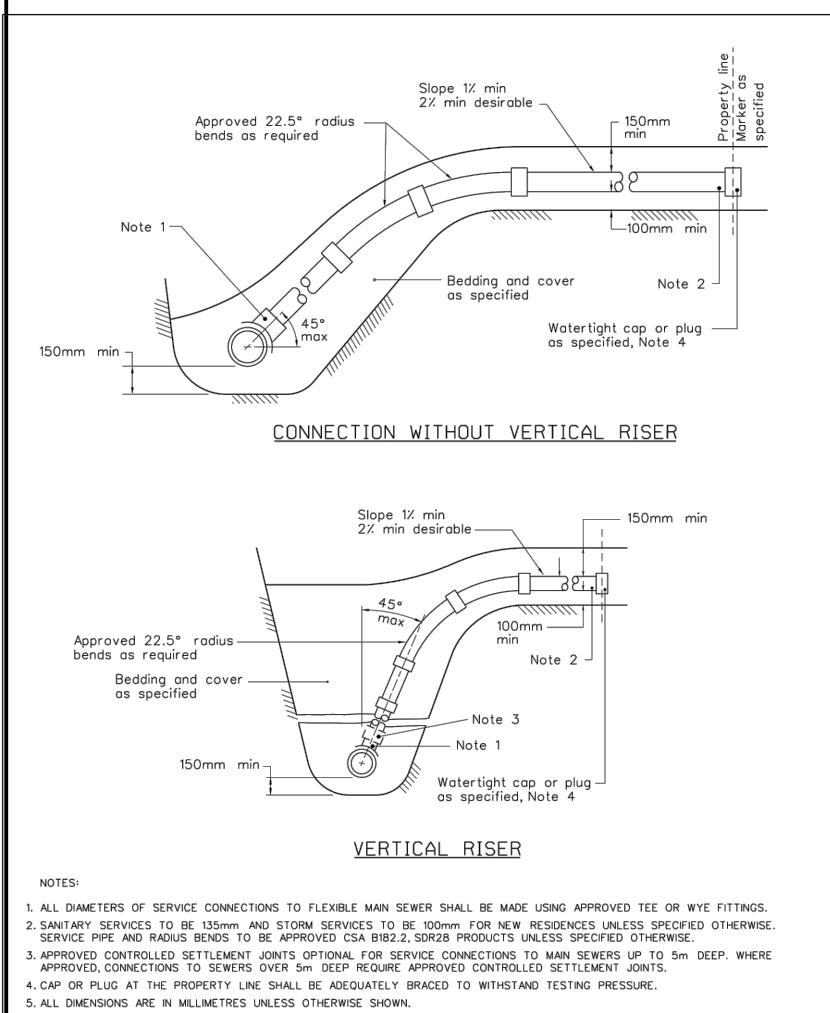
DWG# 18359



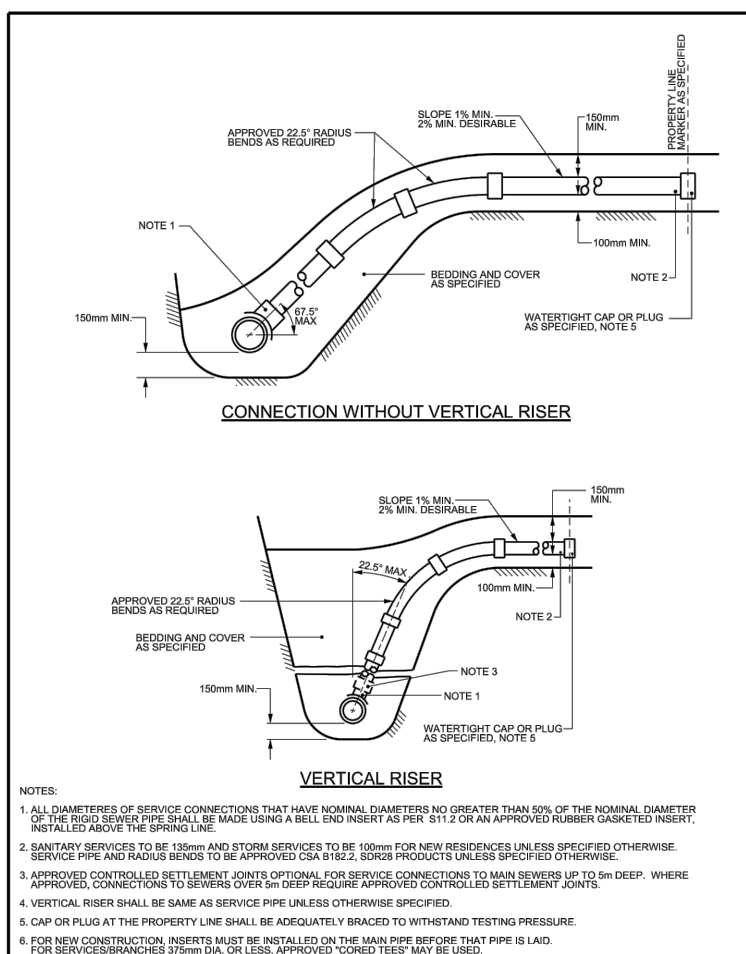
APPROVED
By Geraldine Wildman at 12:26 pm, Dec 06, 2021


L. Wilson

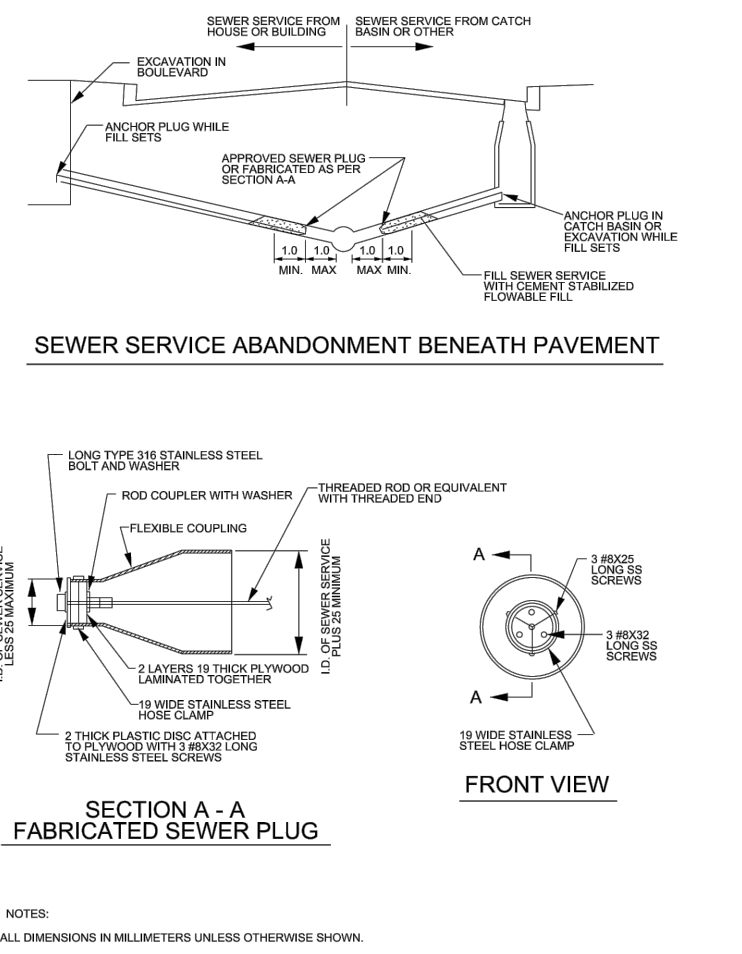
GERALDINE WILDMAN
A/MANAGER, DEVELOPMENT REVIEW EAST BRANCH
PLANNING, INFRASTRUCTURE & ECONOMIC
DEVELOPMENT DEPARTMENT, CITY OF OTTAWA



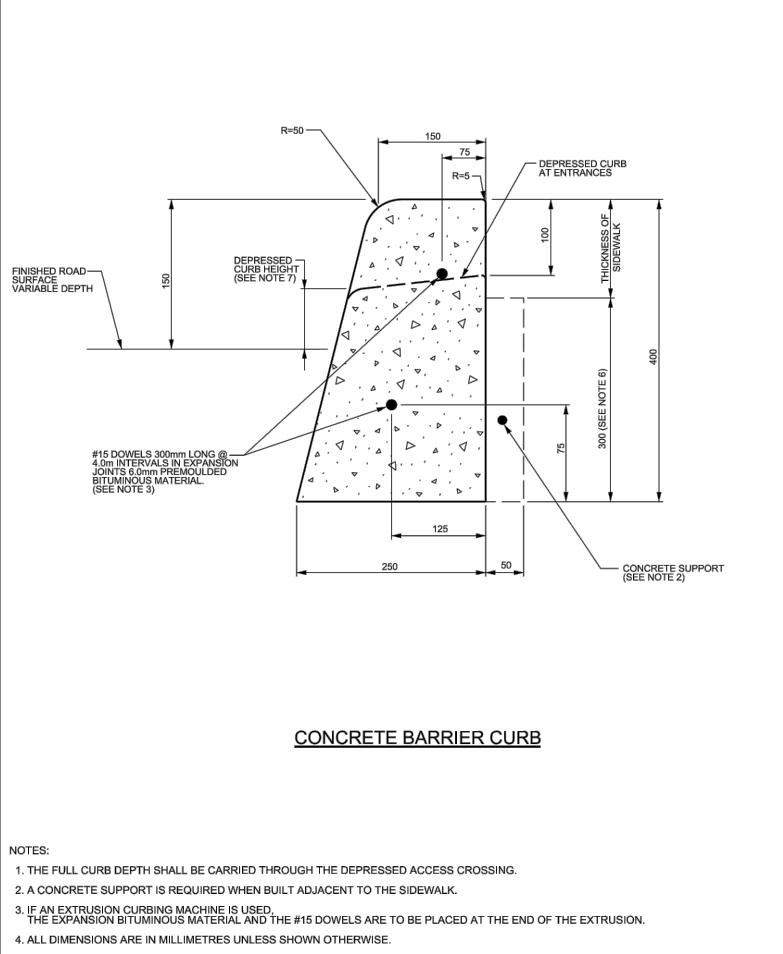
	SEWER SERVICE CONNECTIONS FOR FLEXIBLE MAIN SEWER PIPE	DATE: MARCH 2006
		REV. DATE: MARCH 2013



		SEWER SERVICE CONNECTIONS FOR RIGID MAIN SEWER PIPE (MODIFIED OPSD-1006.010)		DATE: MARCH 2008 REV. DATE: MARCH 2014 DRWG. No.: S11	
---	--	--	--	---	--



		N.T.S.
	SEWER SERVICE ABANDONMENT BENEATH	DATE: MARCH 2011
		REV. DATE:

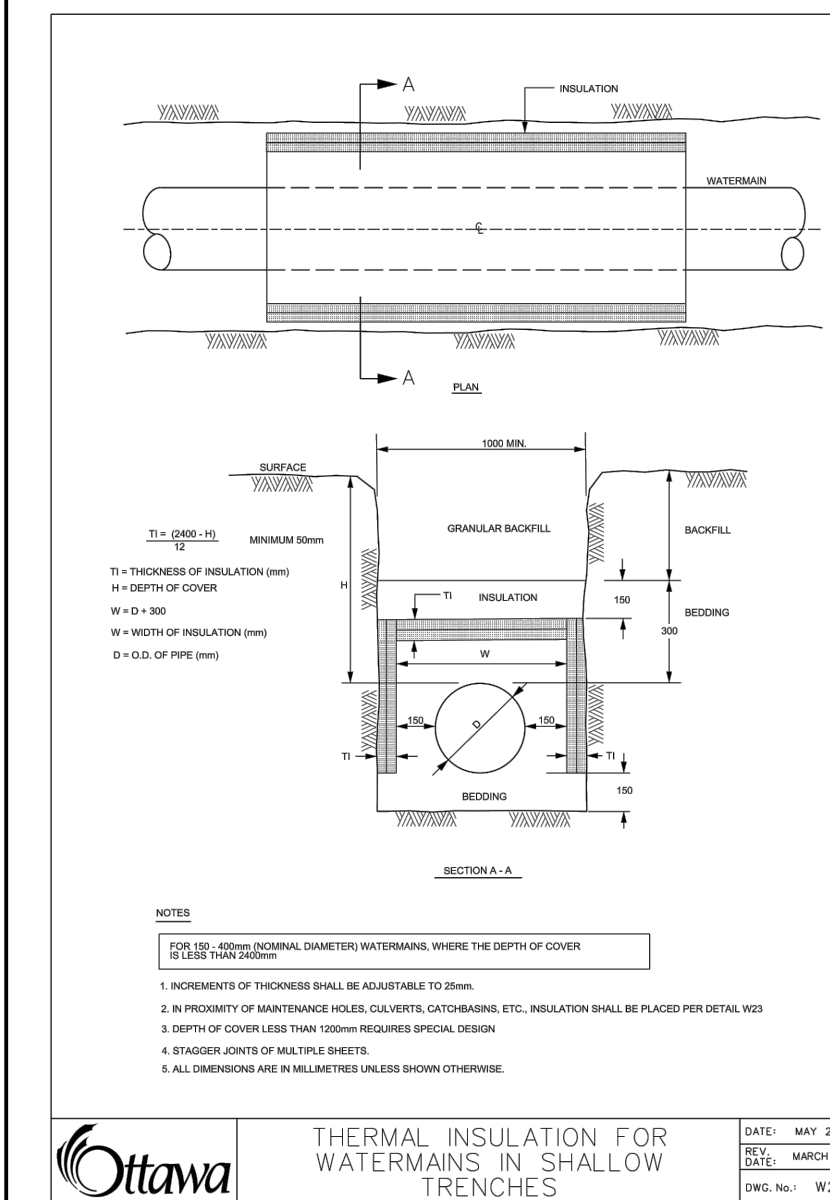
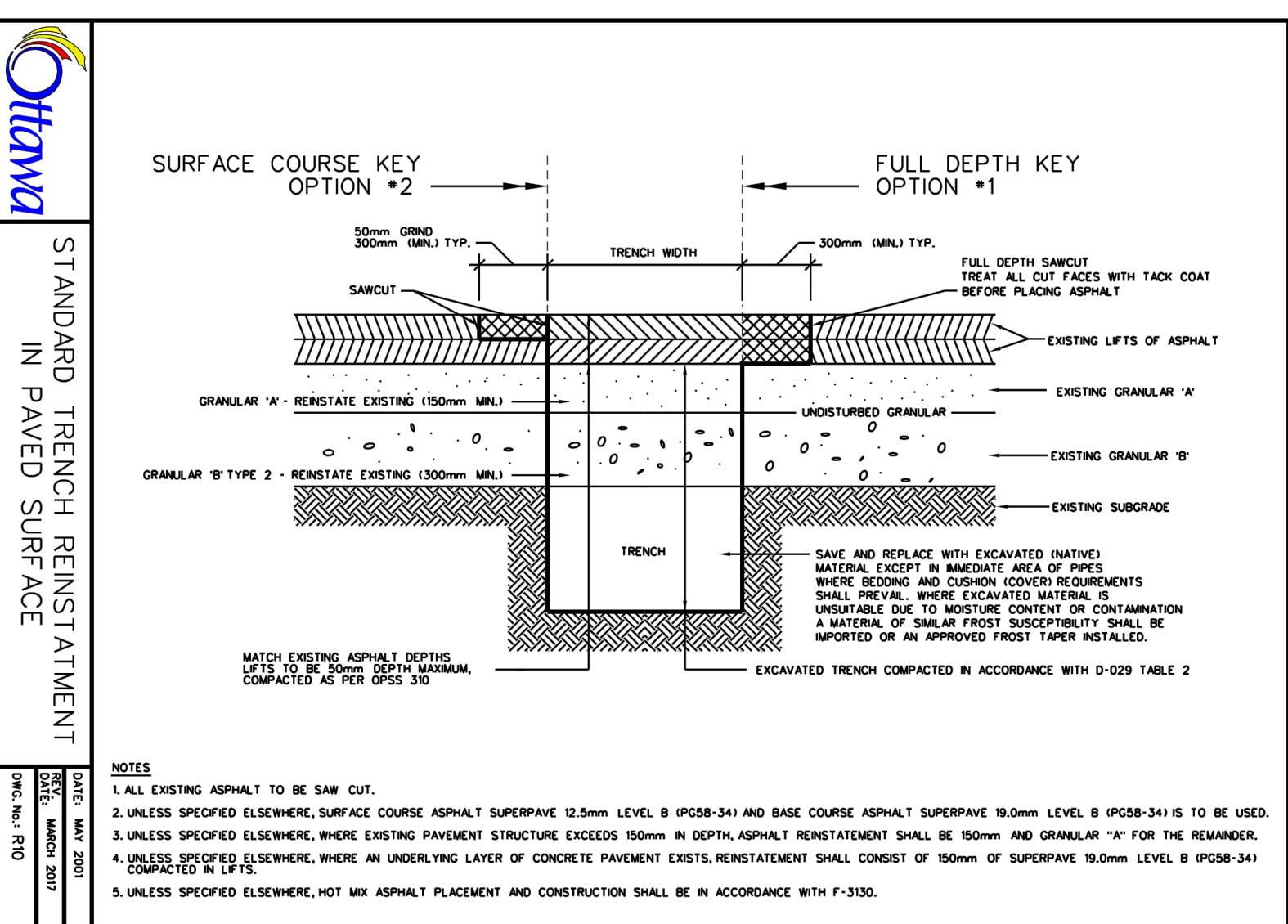


FOR UNPAVED SURF AT INTERSECTION USE 200mm

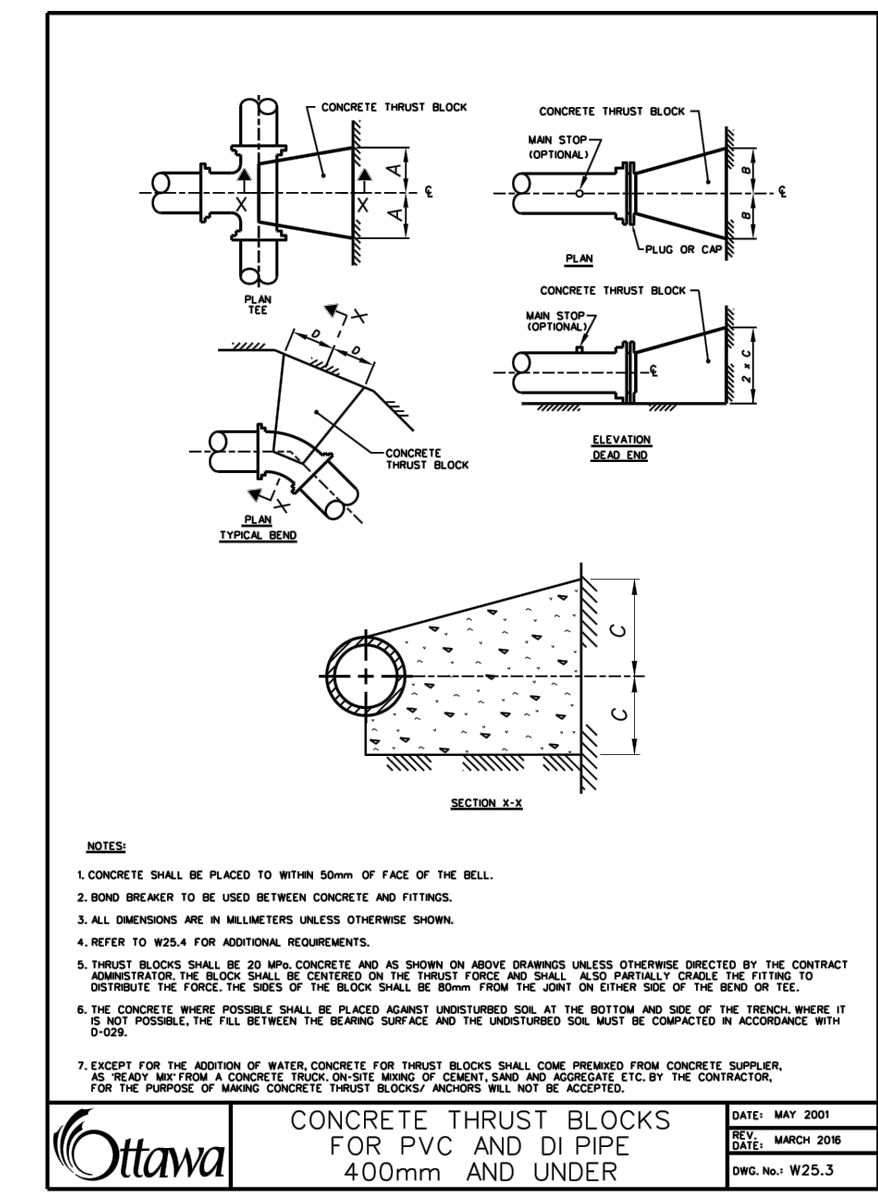
7. DEPRESSIONED CURB HEIGHT - FOR PEDESTRIAN CURB RAMPB 6 TO 8 mm AND FOR PRIVATE ENTRANCES 3 TO 25mm.

N.T.S.

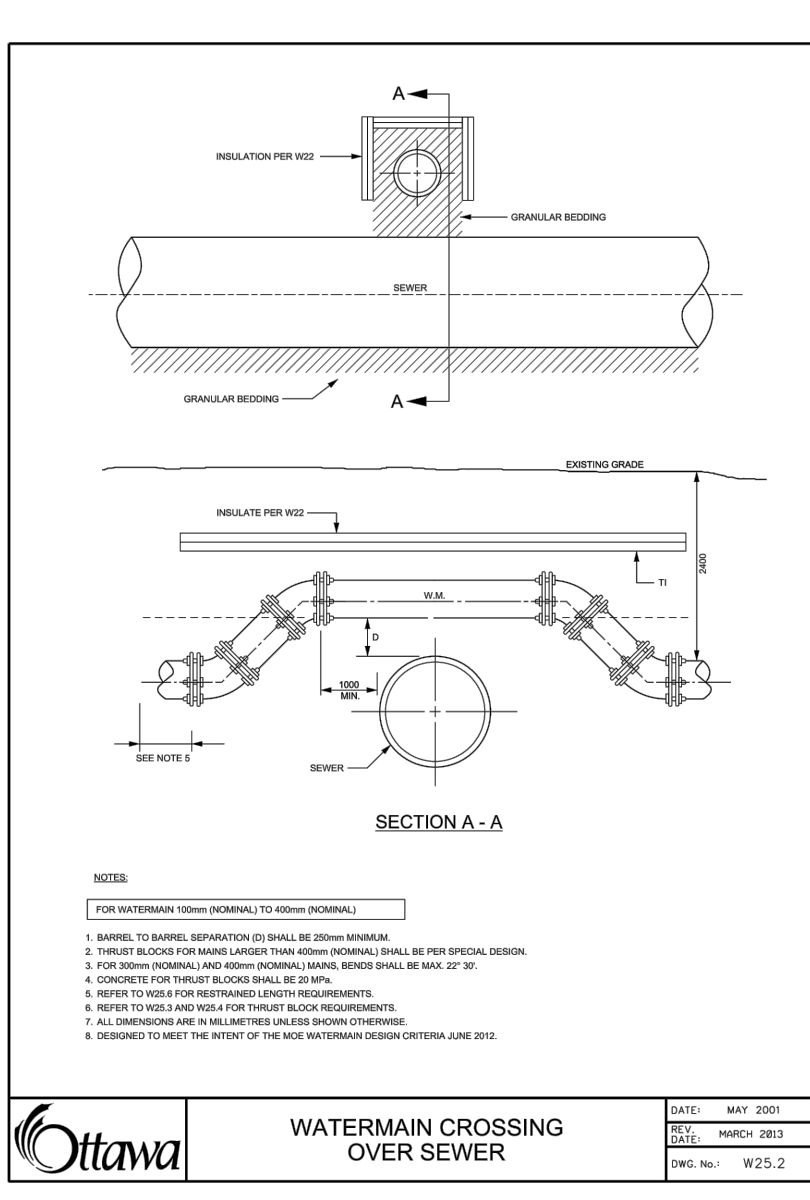
	CONCRETE BARRIER CURB FOR GRANULAR BASE PAVEMENT	DATE:	JANUARY 2003
		REV.	
	DATE:	MARCH 2014	



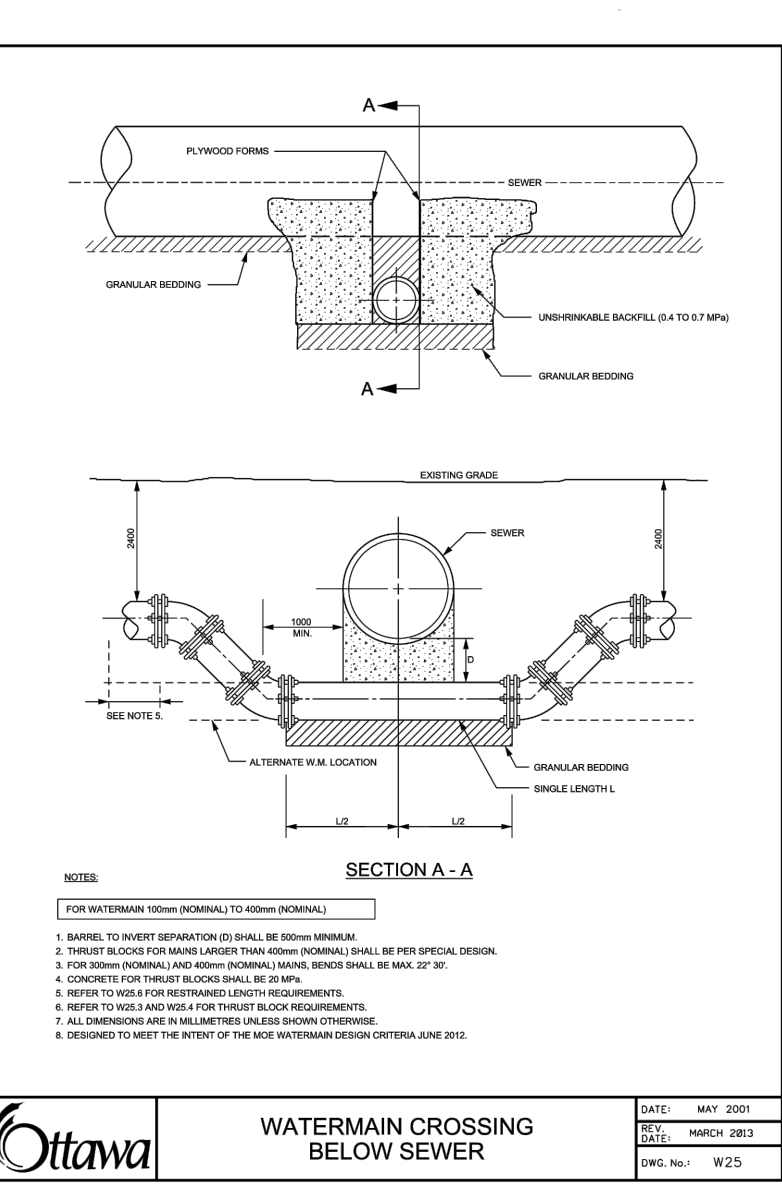
	THERMAL INSULATION FOR WATERMAINS IN SHALLOW TRENCHES	DATE: MAY 2
		REV. DATE: MARCH
		DRG. No.: W



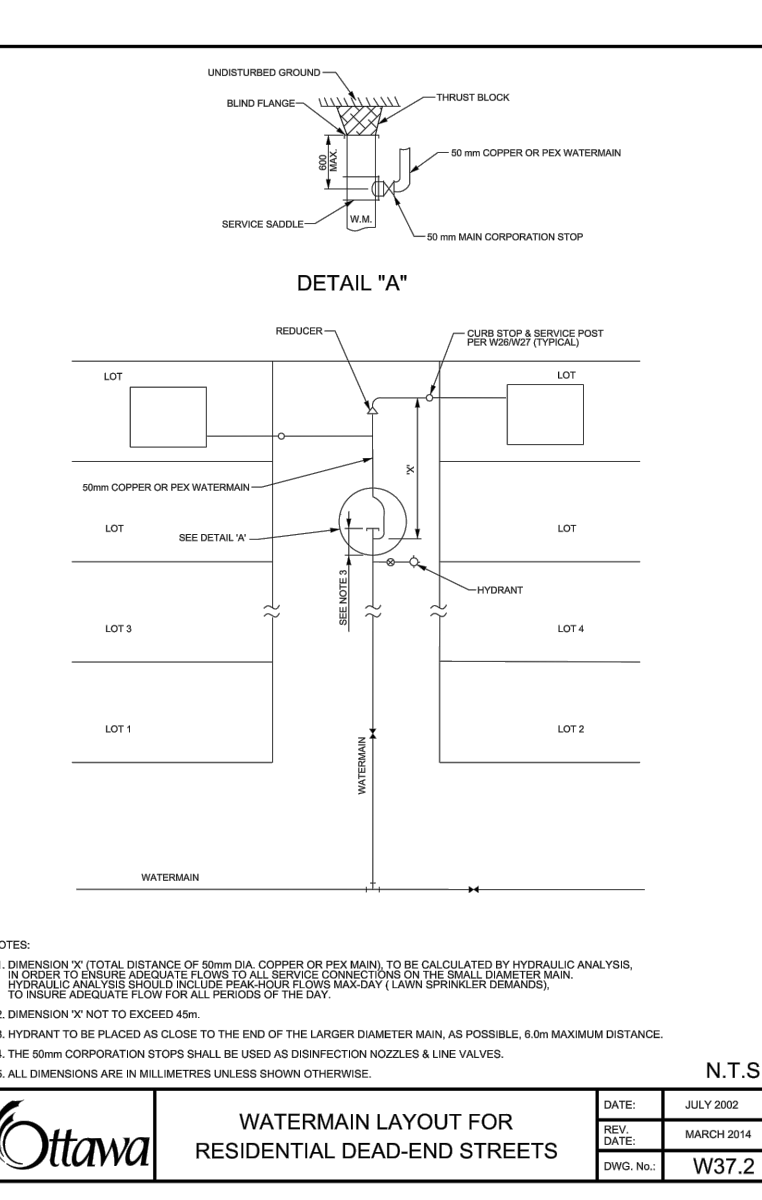
	CONCRETE THRUST BLOCKS	DATE: MAY 2001
	FOR PVC AND DI PIPE	REV. DATE: MARCH 2016
	400mm AND UNDER	DWG. No.: W25.3




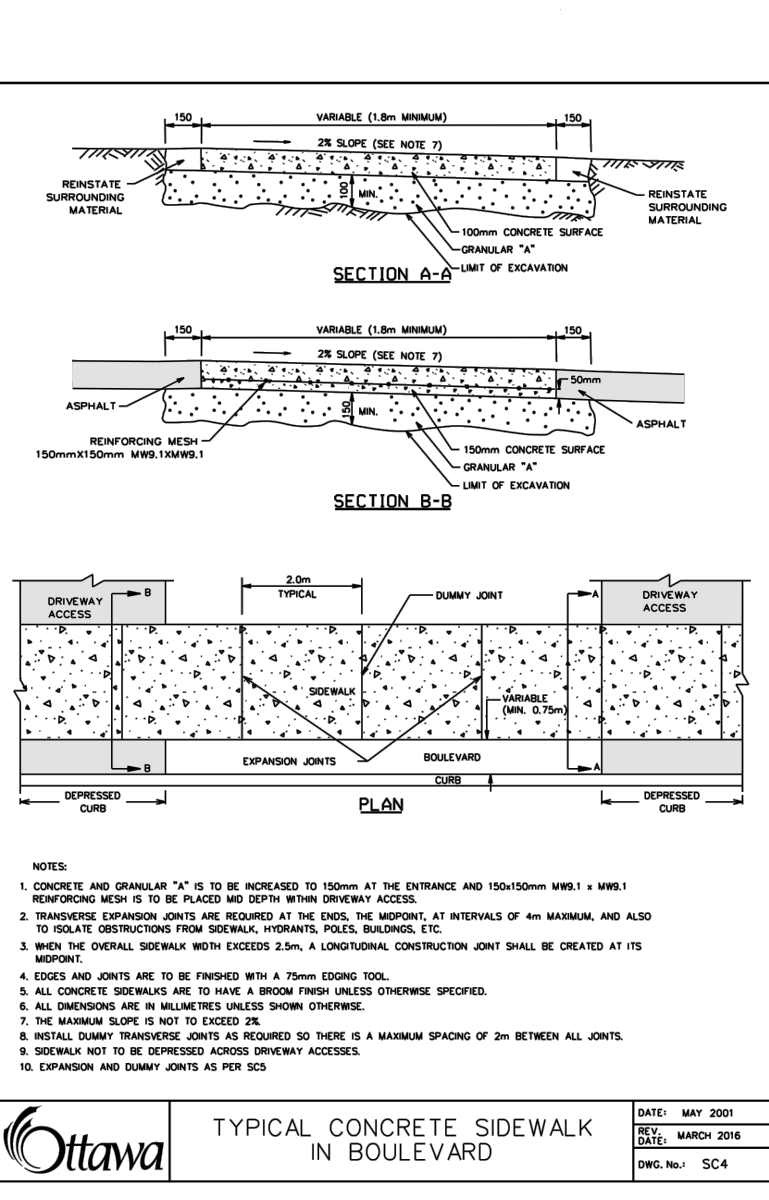
	WATERMAIN CROSSING OVER SEWER	DATE: MAY 2001
		REV. DATE: MARCH 2003
		DWG. No.: W25.2



	WATERMAIN CROSSING BELOW SEWER	DATE: MAY 2007
		REV. DATE: MARCH 2003
		DWG. No.: W25



	WATERMAIN LAYOUT FOR RESIDENTIAL DEAD-END STREETS	REV. DATE: MARCH 2014
		DWG. No.: W37.2



	TYPICAL CONCRETE SIDEWALK IN BOULEVARD	DATE: MAY 2001
		REV. DATE: MARCH 2016
		DWG. NO.: SC4