

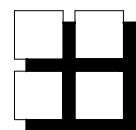
FRONT ELEVATION

APPROVED

By Geraldine Wildman at 10:32 am, Dec 07, 2021

G. Wildman

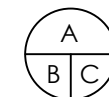
GERALDINE WILDMAN
A/MANAGER, DEVELOPMENT REVIEW EAST BRANCH
PLANNING, INFRASTRUCTURE & ECONOMIC
DEVELOPMENT DEPARTMENT, CITY OF OTTAWA



M. David Blakely
Architect Inc.

2200 Prince of Wales Dr. Suite 101 Nepean, Ontario
 Phone (613) 226-8811 Fax (613) 226-7942

No.	DATE	DESCRIPTION	INIT.
10.			
9.			
8.			
7.			
6.			
5.			
4.			
3.	08/11/21	ADDED STREET SIDE ELEVATION	SM
2.	13/07/21	NOTES ADDED TO SIDE ELEVATIONS	SM
1.	29/04/21	FOR SITE PLAN	SM
REVISIONS			



A - DETAIL NUMBER
 B - SHEET NUMBER (DETAIL REQUIRED)
 C - SHEET NUMBER (DETAIL LOCATION)

PROJECT: TERRACE FLATS
 TRAILSEDGE BLOCK 193 & 194
 TYPICAL BLOCK
 OTTAWA, ONTARIO



DRAWING TITLE: **FRONT ELEVATION**

DATE: APRIL, 2021. SCALE: 1/8"=1'-0"

DRAWN BY: SBM CHECKED: MDB

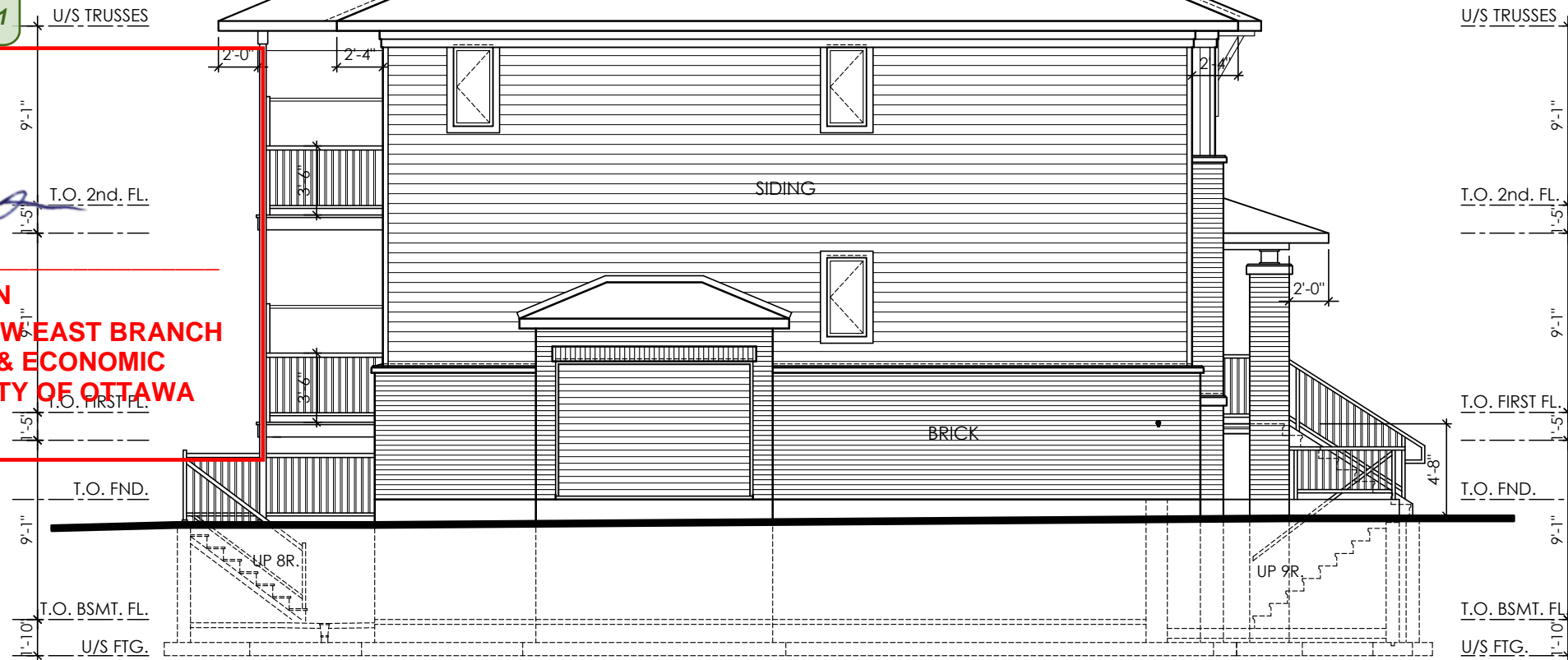
SHEET NO.: **A1**

APPROVED

By Geraldine Wildman at 10:32 am, Dec 07, 2021

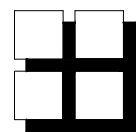
G. Wildman

GERALDINE WILDMAN
A/MANAGER, DEVELOPMENT REVIEW EAST BRANCH
PLANNING, INFRASTRUCTURE & ECONOMIC
DEVELOPMENT DEPARTMENT, CITY OF OTTAWA



END UNIT
 UNIT 'A'
 UNIT 'B'
 UNIT 'C'

SIDE ELEVATION

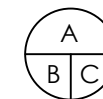


M. David Blakely
Architect Inc.

2200 Prince of Wales Dr. Suite 101 Nepean, Ontario
 Phone (613) 226-8811 Fax (613) 226-7942

SEAL:

No.	DATE	DESCRIPTION	INIT.
10.			
9.			
8.			
7.			
6.			
5.			
4.			
3.	08/11/21	ADDED STREET SIDE ELEVATION	SM
2.	13/07/21	NOTES ADDED TO SIDE ELEVATIONS	SM
1.	29/04/21	FOR SITE PLAN	SM
REVISIONS			



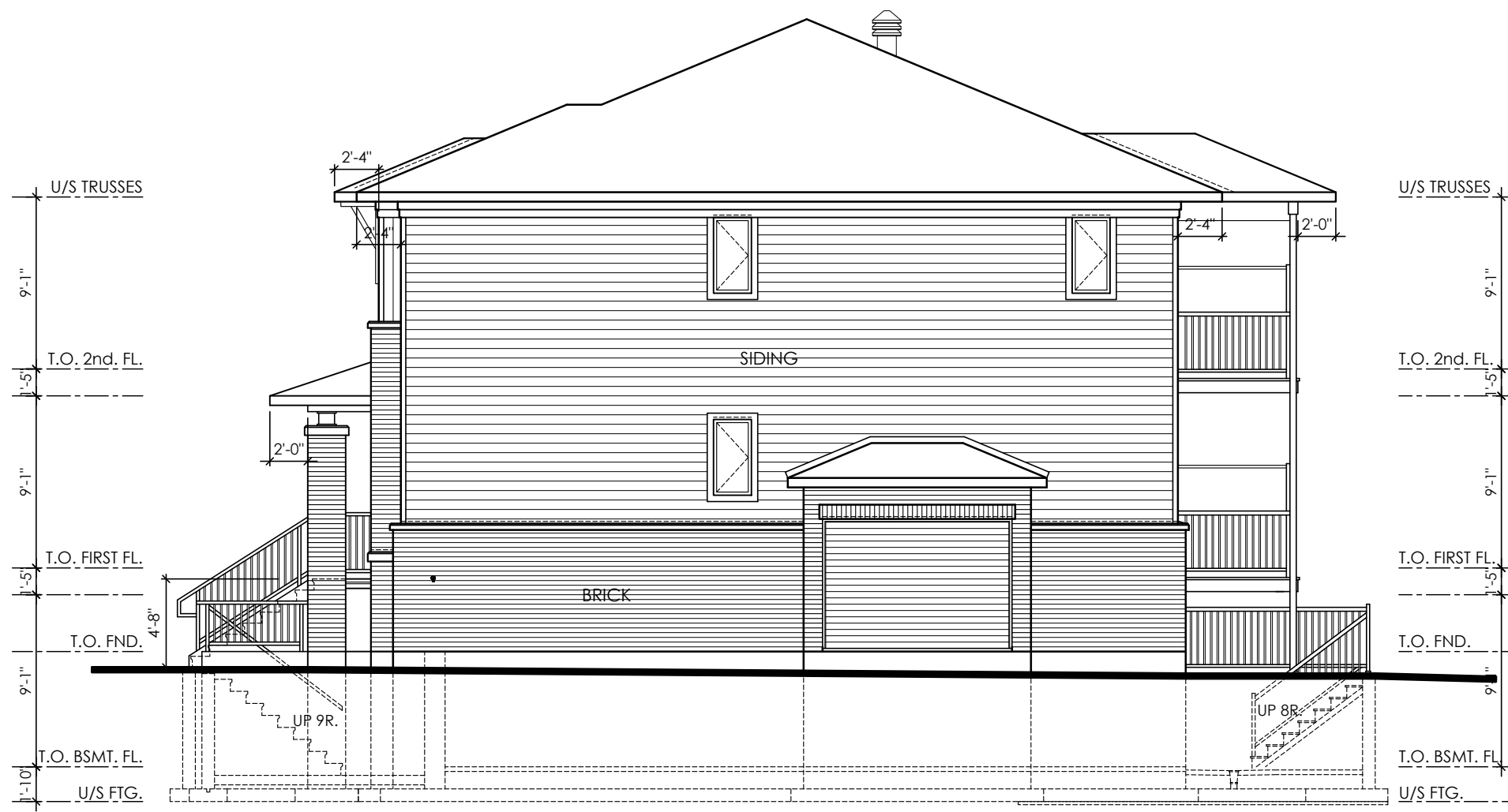
A - DETAIL NUMBER
 B - SHEET NUMBER (DETAIL REQUIRED)
 C - SHEET NUMBER (DETAIL LOCATION)

PROJECT: TERRACE FLATS
 TRAILSEDGE BLOCK 193 & 194
 TYPICAL BLOCK
 OTTAWA, ONTARIO



DRAWING TITLE: **SIDE ELEVATION**

DATE: APRIL, 2021. SCALE: 1/8"=1'-0" SHEET NO.: **A2**
 DRAWN BY: SBM CHECKED: MDB



END UNIT REV.
 UNIT 'A'
 UNIT 'B'
 UNIT 'C'

END UNIT, SIDE ELEVATION

APPROVED
 By Geraldine Wildman at 10:33 am, Dec 07, 2021

SIDE ELEVATION

**M. David Blakely
 Architect Inc.**
 2200 Prince of Wales Dr. Suite 101 Nepean, Ontario
 Phone (613) 226-8811 Fax (613) 226-7942

G. Wildman

GERALDINE WILDMAN
**A/MANAGER, DEVELOPMENT REVIEW EAST BRANCH
 PLANNING, INFRASTRUCTURE & ECONOMIC
 DEVELOPMENT DEPARTMENT, CITY OF OTTAWA**

No.	DATE	DESCRIPTION	INIT.
10.			
9.			
8.			
7.			
6.			
5.			
4.			
3.	08/11/21	ADDED STREET SIDE ELEVATION	SM
2.	13/07/21	NOTES ADDED TO SIDE ELEVATIONS	SM
1.	29/04/21	FOR SITE PLAN	SM

A - DETAIL NUMBER
 B - SHEET NUMBER (DETAIL REQUIRED)
 C - SHEET NUMBER (DETAIL LOCATION)

A
B
C

PROJECT: TERRACE FLATS
 TRAILSEDGE BLOCK 193 & 194
 TYPICAL BLOCK
 OTTAWA, ONTARIO

CLIENT: RICH CRAFT
 Group of Companies

DRAWING TITLE: **SIDE ELEVATION**

DATE: APRIL, 2021. SCALE: 1/8"=1'-0" SHEET NO.: **A3**

DRAWN BY: SBM CHECKED: MDB



END UNIT, STREET SIDE ELEVATION

END UNIT
UNIT 'A'
UNIT 'B'
UNIT 'C'

APPROVED
By Geraldine Wildman at 10:33 am, Dec 07, 2021

STREET SIDE ELEVATION - BLOCKS 12, 13, 14, 15, 17, 18 & 19

**M. David Blakely
Architect Inc.**
2200 Prince of Wales Dr. Suite 101 Nepean, Ontario
Phone (613) 226-8811 Fax (613) 226-7942

G. Wildman

GERALDINE WILDMAN
MANAGER, DEVELOPMENT REVIEW EAST BRANCH
PLANNING, INFRASTRUCTURE & ECONOMIC
DEVELOPMENT DEPARTMENT, CITY OF OTTAWA

SEAL:

10.			
9.			
8.			
7.			
6.			
5.			
4.			
3.	08/11/21	ADDED STREET SIDE ELEVATION	SM
2.	13/07/21	NOTES ADDED TO SIDE ELEVATIONS	SM
1.	29/04/21	FOR SITE PLAN	SM
No.	DATE	DESCRIPTION	INIT.

REVISIONS	
-----------	--

A - DETAIL NUMBER
B - SHEET NUMBER (DETAIL REQUIRED)
C - SHEET NUMBER (DETAIL LOCATION)

PROJECT: TERRACE FLATS
TRAILSEDGE BLOCK 193 & 194
TYPICAL BLOCK
OTTAWA, ONTARIO

CLIENT: RICH CRAFT
Group of Companies

DRAWING TITLE: STREET SIDE ELEVATION
BLOCKS - X, X, X, X

DATE: APRIL, 2021. SCALE: 1/8"=1'-0" SHEET NO.: A4

DRAWN BY: SBM CHECKED: MDB



REAR ELEVATION

APPROVED
By Geraldine Wildman at 10:33 am, Dec 07, 2021

**M. David Blakely
Architect Inc.**
2200 Prince of Wales Dr. Suite 101 Nepean, Ontario
Phone (613) 226-8811 Fax (613) 226-7942

G. Wildman

GERALDINE WILDMAN
A/MANAGER, DEVELOPMENT REVIEW EAST BRANCH
PLANNING, INFRASTRUCTURE & ECONOMIC
DEVELOPMENT DEPARTMENT, CITY OF OTTAWA

SEAL:

No.	DATE	DESCRIPTION	INIT.
10.			
9.			
8.			
7.			
6.			
5.			
4.			
3.	08/11/21	ADDED STREET SIDE ELEVATION	SM
2.	13/07/21	NOTES ADDED TO SIDE ELEVATIONS	SM
1.	29/04/21	FOR SITE PLAN	SM
REVISIONS			

A
B
C

A - DETAIL NUMBER
B - SHEET NUMBER (DETAIL REQUIRED)
C - SHEET NUMBER (DETAIL LOCATION)

PROJECT: TERRACE FLATS
TRAILSEDGE BLOCK 193 & 194
TYPICAL BLOCK
OTTAWA, ONTARIO

CLIENT: RICH CRAFT
Group of Companies

DRAWING TITLE: **REAR ELEVATION**

DATE: APRIL, 2021. SCALE: 1/8"=1'-0"

DRAWN BY: SBM CHECKED: MDB

SHEET NO.: **A5**