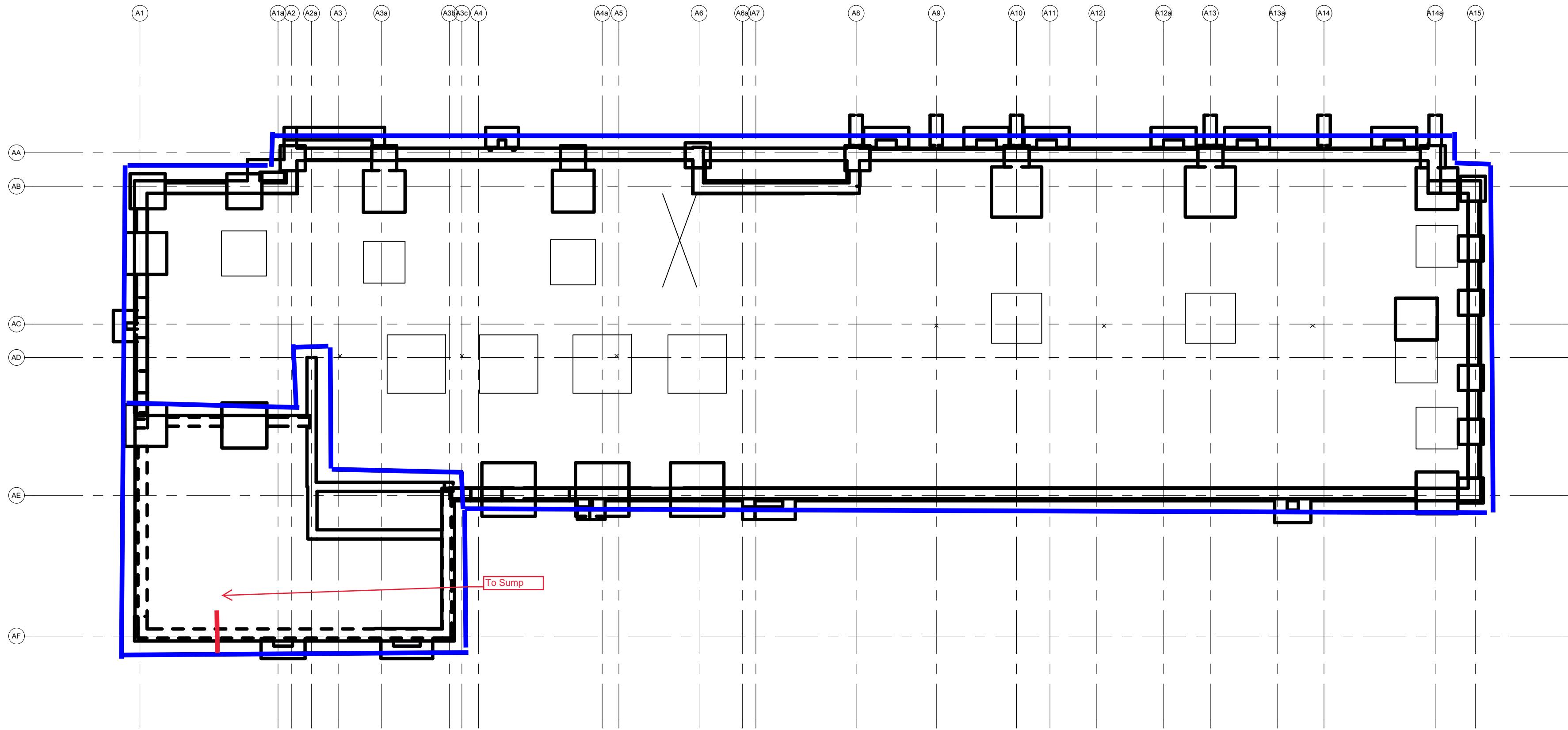


Perimeter Drainage system consisting of 150 mm perforated drain pipe wrapped in non-woven geotextile and surrounded with 150 mm of 19 mm clear stone.

150 mm diameter drainage sleeves be cast in the footing or at the foundation wall/footing interface mechanically connected to the exterior perimeter drainage pipe

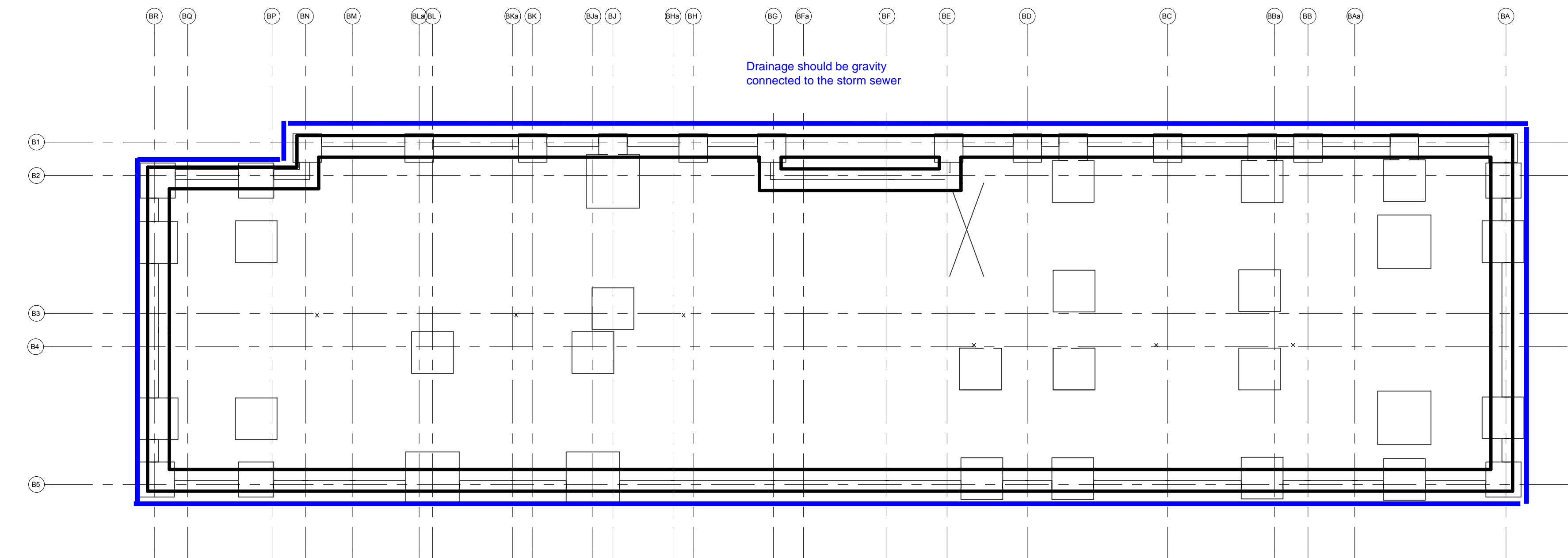
1 FOUNDATION DRAINAGE PLAN BLDG 'A'

Scale: 1:200



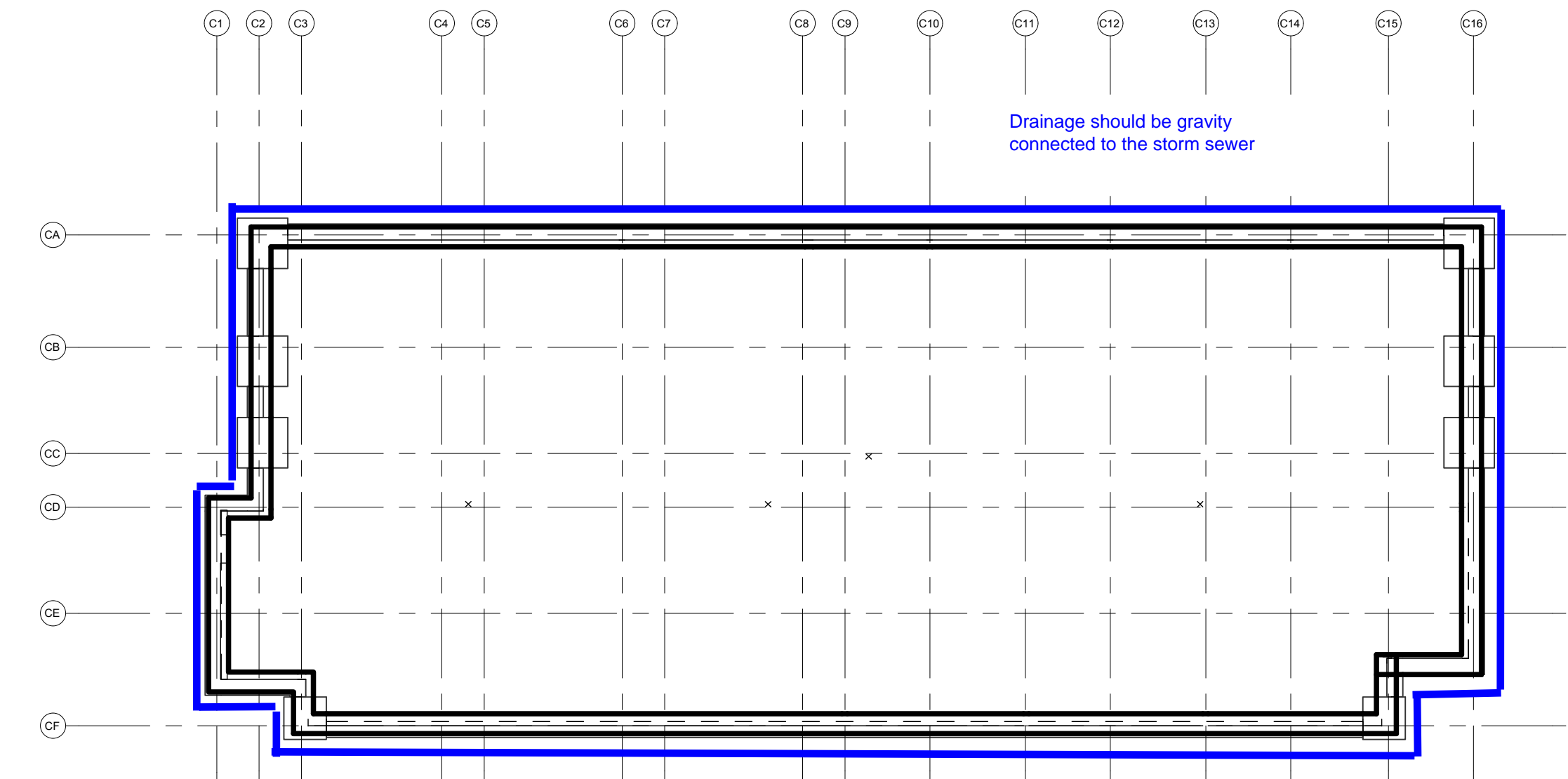
2 FOUNDATION DRAINAGE PLAN BLDG 'B'

Scale: 1:200



3 FOUNDATION DRAINAGE PLAN BLDG 'C'

Scale: 1:200



39 Auriga Dr. Nepean, ON K2E 7Y8

COPYRIGHT

This drawing has been prepared solely for the intended use, thus any reproduction or distribution for any purpose other than authorized by IBI Group is forbidden. Written dimensions shall have precedence over scaled dimensions. Contractors shall verify and be responsible for all dimensions and conditions on the job, and IBI Group shall be informed of any variations from the dimensions and conditions shown on the drawing. Shop drawings shall be submitted to IBI Group for general conformance before proceeding with fabrication.

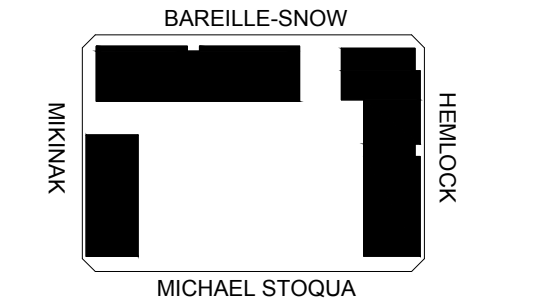
IBI Group Professional Services (Canada) Inc.
is a member of the IBI Group of companies

ISSUES

No.	DESCRIPTION	DATE
1	####	####

NOT FOR CONSTRUCTION

KEY PLAN



PRIME CONSULTANT

IBI GROUP
Unit 110 - 650 Dalton Avenue
Kingston ON K7M 8N7 Canada
tel 613 531 4440 fax 613 531 7789
ibigroup.com

PROJECT

MIKINAK REDEVELOPMENT

715 MIKINAK ROAD, OTTAWA, ON
CANADA K1K 2G8

PROJECT NO:
125599

SCALE:
1:500

DRAWN BY:
NA

CHECKED BY:
BT

PROJECT MGR:
CW

APPROVED BY:
BT

SHEET TITLE

FOUNDATION DRAINAGE PLAN

SHEET NUMBER

CM1101

ISSUE

1