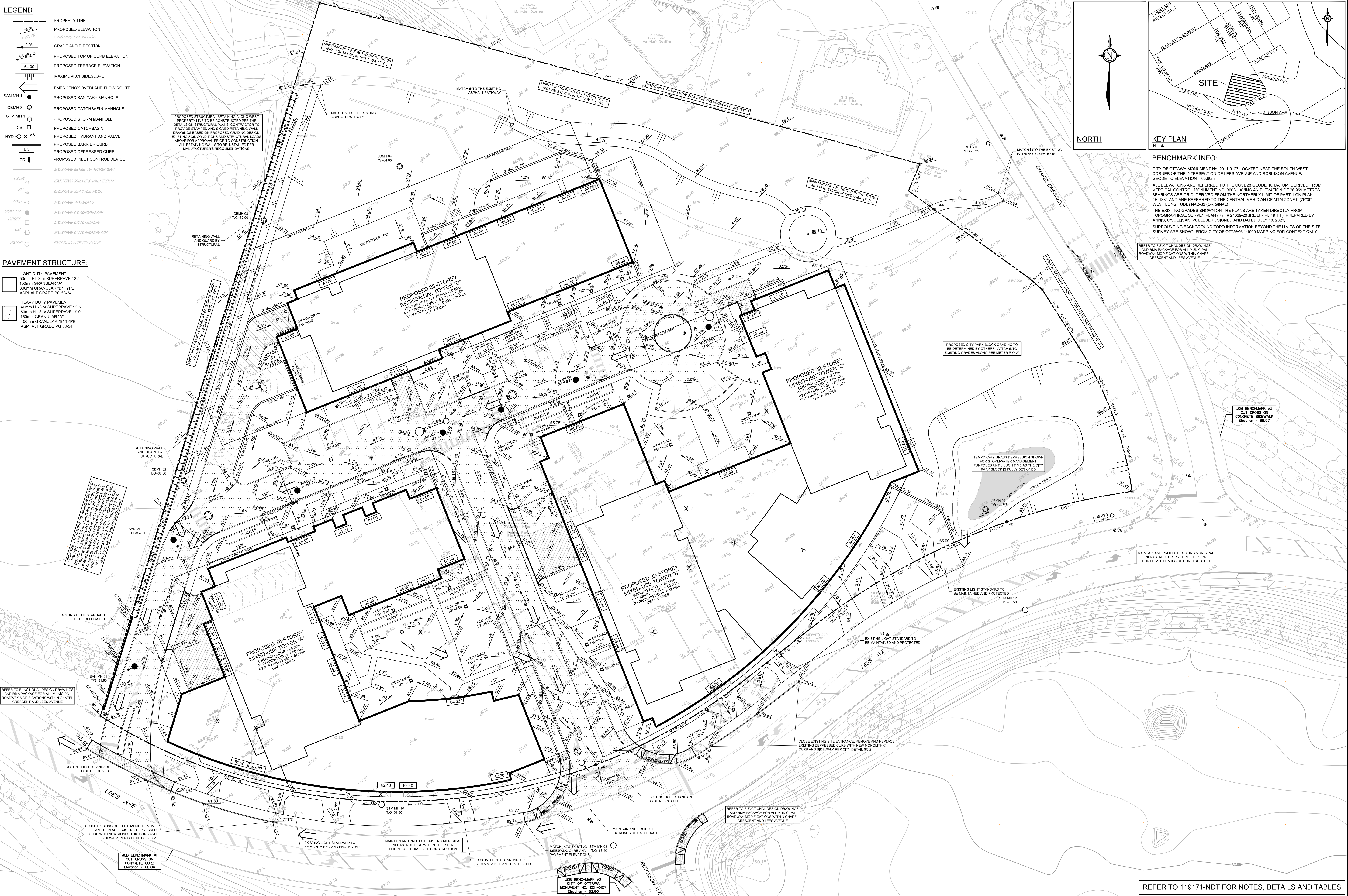


- LEGEND**
- PROPERTY LINE
PROPOSED ELEVATION
EXISTING ELEVATION
GRADE AND DIRECTION
PROPOSED TOP OF CURB ELEVATION
PROPOSED TERRACE ELEVATION
MAXIMUM 3:1 SIDESLOPE
EMERGENCY OVERLAND FLOW ROUTE
PROPOSED SANITARY MANHOLE
PROPOSED CATCHBASIN MANHOLE
PROPOSED STORM MANHOLE
PROPOSED CATCHBASIN
PROPOSED HYDRANT AND VALVE
PROPOSED BARRIER CURB
PROPOSED DEPRESSIONED CURB
PROPOSED INLET CONTROL DEVICE
EXISTING EDGE OF PAVEMENT
EXISTING VALVE & VALVE BOX
EXISTING SERVICE POST
EXISTING HYDRANT
EXISTING COMBINED MH
EXISTING CATCHBASIN
EXISTING UTILITY POLE
- PAVEMENT STRUCTURE:**
- LIGHT DUTY PAVEMENT
50mm HL-3 or SUPERPAVE 12.5
150mm GRANULAR "A"
300mm GRANULAR "B" TYPE II
ASPHALT GRADE PG 58-34
- HEAVY DUTY PAVEMENT
40mm HL-3 or SUPERPAVE 12.5
50mm HL-4 or SUPERPAVE 13.0
150mm GRANULAR "A"
450mm GRANULAR "B" TYPE II
ASPHALT GRADE PG 58-34



<p>NOTE:</p> <p>THE POSITION OF ALL POLE LINES, CONDUITS, WATERMANS, SEWERS AND OTHER UNDERGROUND AND OVERGROUND UTILITIES AND STRUCTURES IS NOT NECESSARILY SHOWN ON THE CONTRACT DRAWINGS, AND WHERE SHOWN, THE ACCURACY OF THE POSITION OF SUCH UTILITIES AND STRUCTURES IS NOT GUARANTEED. BEFORE STARTING WORK, DETERMINE THE EXACT LOCATION OF ALL SUCH UTILITIES AND STRUCTURES AND ASSUME ALL LIABILITY FOR DAMAGE TO THEM.</p>				<p>OWNER INFORMATION</p> <p>2 ROBINSON AVENUE LIMITED PARTNERSHIP 88 ALBERT STREET OTTAWA, ONTARIO, K1P 5E9 CONTACT: MR. MIKE MARCELLA PHONE: (343) 550-9661 EMAIL: mike@placodonee.com</p>				<p>SCALE</p> <p>1:300</p> <p>0 3 6 9 12</p>		<p>DESIGN</p> <p>SM / FST</p> <p>CHECKED</p> <p>FST</p> <p>DRAWN</p> <p>DM / SM</p> <p>CHECKED</p> <p>SM / FST</p> <p>APPROVED</p> <p>FST</p>	<p>FOR REVIEW ONLY</p> <p>1 ISSUED FOR SITE PLAN APPROVAL</p> <p>NOV 15/21</p> <p>FST</p>	<p>PROVINCE OF ONTARIO</p> <p>REGISTERED PROFESSIONAL ENGINEER</p> <p>F.S. THAVETTE</p> <p>100041299</p> <p>NOV 15/20</p>	<p>NOVATECH</p> <p>Engineers, Planners & Landscape Architects</p> <p>Suite 200, 240 Michael Cowpland Drive Ottawa, Ontario, Canada K2M 1P6</p> <p>Telephone (613) 254-9643 Facsimile (613) 254-5867 Website www.novatech-eng.com</p>	<p>LOCATION</p> <p>CITY OF OTTAWA</p> <p>2 ROBINSON AVENUE</p> <p>DRAWING NAME</p> <p>GRADING PLAN</p>	<p>PROJECT NO.</p> <p>119171</p> <p>REV</p> <p>REV #1</p> <p>DRAWING NO.</p> <p>119171-GR</p>
---	--	--	--	---	--	--	--	---	--	---	---	---	--	--	---