

NOTE: ELEVATIONS ARE FOR REFERENCE OF OVERALL DESIGN. REFER TO A330 SERIES of UNFOLDED ELEVATIONS FOR DIMENSIONAL INFORMATION.

12

1

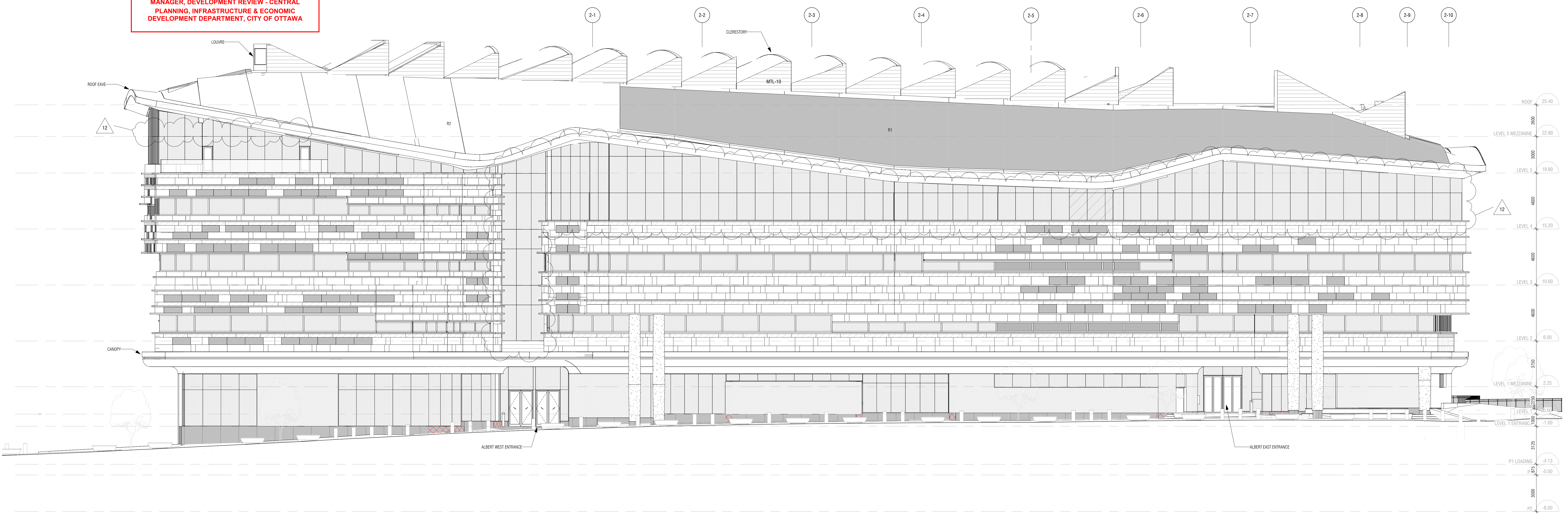
OVERALL ELEVATION - PROJECT NORTH

A301 1:125

*DJ*

DOUGLAS JAMES, MCIP, RPP  
MANAGER, DEVELOPMENT REVIEW - CENTRAL  
PLANNING, INFRASTRUCTURE & ECONOMIC  
DEVELOPMENT DEPARTMENT, CITY OF OTTAWA

APPROVED  
By Douglas James at 11:41 am, Oct 28, 2021



NOTE: ELEVATIONS ARE FOR REFERENCE OF OVERALL DESIGN. REFER TO A330 SERIES of UNFOLDED ELEVATIONS FOR DIMENSIONAL INFORMATION.

LEGEND - UNFOLDED ELEVATIONS

- HATCH INDICATES BIRDSAFE GLASS REFER TO A058 FOR CONFIGURATION
- SHADDED PATTERN INDICATES SPANDREL OR ACID ETCH (GLASS TYPE WITH "F" SURFIX) GLASS REFER TO TAG AND A052 FOR GLASS BUILD-UP
- HATCH INDICATES CURVED STONE PANELS
- HATCH INDICATES STY-HB COURSE
- HATCH INDICATES ALUMINIUM FIN (FN-1 or FN-2)
- FOLD LINE (APPLICABLE TO A330 SERIES)
- FIRE BLOCKING (APPLICABLE TO A330 SERIES)
- JUNCTION BOX REFER TO ELECT. DRAWINGS FOR QUANTITY AND LAYOUT (APPLICABLE TO A330 SERIES)
- HB (REFER TO MECH. DRAWINGS) (APPLICABLE TO A330 SERIES)
- GP (REFER TO ELECT. DRAWINGS) (APPLICABLE TO A330 SERIES)

GENERAL NOTES:  
1. FOR HORIZONTAL SPACING REFER TO PARTIALS PLANS.  
2. ALL EXTERIOR GLASS HAS BIRDSAFE GLASS FINIT U.I.O.  
3. SITE MEASURE ALL SLOPING CURTAIN WALL FRAMING.

Diamond Schmitt Architects  
KWC Architects Inc.  
Architects in Joint Venture for the OPL/LAC Joint Facility  
304 Adelaide Street West, Suite 100, Toronto, Canada M5H 1P7  
Tel: 416 862 8800 Fax: 416 862 5508 info@dsai.ca www.dsai.ca

OTTAWA PUBLIC LIBRARY -  
LIBRARY AND ARCHIVES CANADA  
JOINT FACILITY

555 Albert St, Ottawa, ON, K1R 7X3

OVERALL ELEVATIONS - PROJECT NORTH & SOUTH

Scale: As indicated  
Project No: 1855  
Date:

12

2

OVERALL ELEVATION - PROJECT SOUTH

A301 1:125