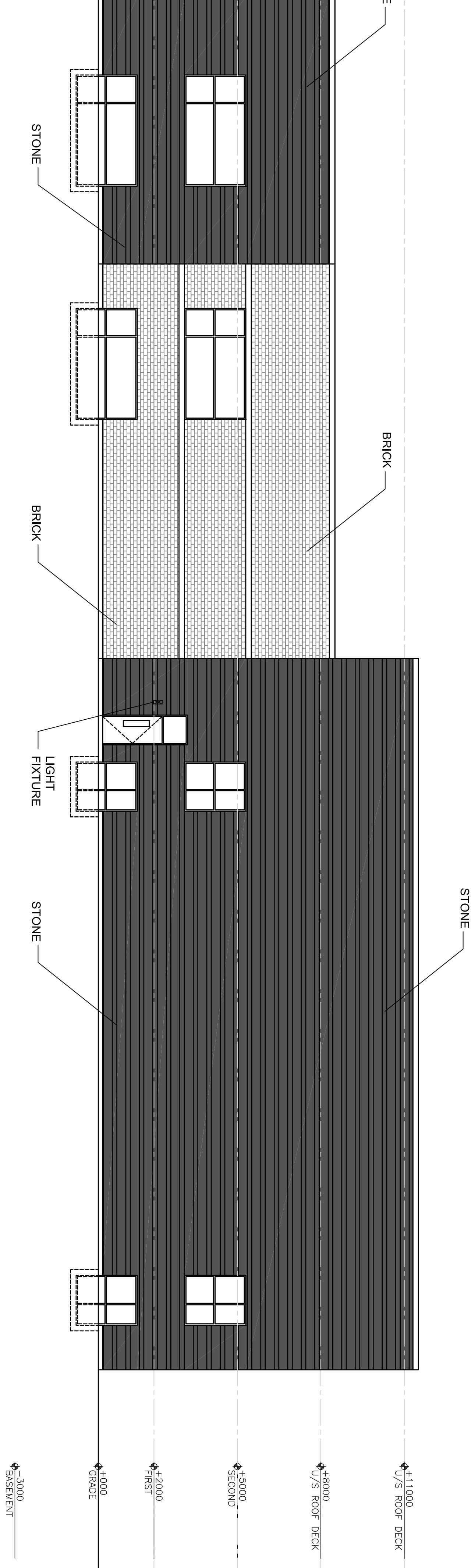


2 NORTH ELEVATION  
SCALE 1:100



1 EAST ELEVATION  
SCALE 1:100



GENERAL NOTES

1. CONSULTING ENGINEER'S DIMENSIONS, DRAWINGS, SPECIFICATIONS AND SCHEDULES SHALL PREVAIL OVER ANY DIMENSIONS, DRAWINGS, SPECIFICATIONS AND SCHEDULES OF THE OWNER'S ARCHITECTURAL DRAWINGS.
2. ALL DRAWINGS & SPECIFICATIONS ARE INSTRUMENTS OF SERVICE AND SHALL BE RETURNED TO THE ARCHITECT UPON COMPLETION OF THE WORK. NO PARTS OF THESE DRAWINGS SHALL BE REPRODUCED OR TRANSMITTED IN ANY FORM OR BY ANY MEANS, ELECTRONIC OR MECHANICAL, INCLUDING PHOTOCOPYING, RECORDING, OR BY ANY INFORMATION STORAGE AND RETRIEVAL SYSTEM, WITHOUT THE WRITTEN PERMISSION OF THE ARCHITECT.

No.	Revision/Issue	Date
7	ISSUED FOR SITE PLAN	2021SEP14
6	ISSUED FOR SITE PLAN	MAR 16

**PROJECT MANAGER**  
HARSH GUPTA  
B. ARCH  
11066 PLANTIE DRIVE,  
OTTAWA, ON K1V 9T6  
T: 613-737-5939  
F: 613-812-1726  
C: 613-866-2994

**PLANNER**  
jd planning  
+ project management  
41 Rideau Ferry Road,  
Lombardy ON K0G 1L0  
T: 613-812-1726  
E: jessica@jdpn.ca

**CLIENT**  
ANNIS, OSULLIVAN,  
VOLLEBECK LTD.  
14 Concourse Gate,  
Suite 500N, K2E 7S6  
Mississauga, ON L4V 1A7  
Phone: (613) 727-0850  
Fax: (613) 727-1079  
Email: hsh@annisdvltd.com

**TRANSPORTATION ENGINEER**  
D. J. Halpeny &  
Associates Ltd.  
P. O. Box 774,  
Monrovia, ON K4M 1A7  
Tel: (613) 692-8662  
Fax: (613) 692-1945  
Email: dhalpeny@annisdvltd.com

**STRUCTURAL CONSULTANT**  
Larios B. Linton &  
Associates Inc.  
3532 Corling Ave,  
Toronto, ON M2H 5A8  
OTTAWA, ON K1V 7P1  
Ph: 613 739 9500  
Email: linton@designsystems.ca

**MECHANICAL & ELECTRICAL CONSULTANT**  
CHARELLI KORRELL  
ENGINEERING LTD.  
NICKEL TOWER 600,  
KANATA, ON K2K 1X7  
613-277-0119  
613-277-0119  
613-277-0119

**CIVIL CONSULTANT**  
LRJ  
4400 Woodbine Ave, Suite 1100  
Markham, ON L3R 9K5  
www.lroj.ca  
613-277-0119  
613-277-0119  
613-277-0119

**Mechanical & Electrical Consultant**  
CHARELLI KORRELL  
ENGINEERING LTD.  
NICKEL TOWER 600,  
KANATA, ON K2K 1X7  
613-277-0119  
613-277-0119  
613-277-0119

**ARCHITECT**  
VECTOR DESIGN ARCHITECTS  
14 STRATHURBURY STREET,  
OTTAWA, ONTARIO K2G 5N8  
TELEPHONE: (613) 421-9806  
EMAIL: vecorchg@mail.com

**PROJECT AND LOCATION**  
HERITAGE CENTRE -  
HINDU TEMPLE - PHASE 2,  
4835 BANK ST., OTTAWA, ON  
P 1 N 0 4 3 2 6 - 0 0 1 1

**TITLE OF DRAWING**  
ELEVATIONS

**JOB NUMBER**  
17033

**DATE**  
2019 05

**SCALE**  
1:100

**DWG NUMBER**  
A300

**DESIGNED BY**  
SJK

