

**METRIC**  
DISTANCES AND ELEVATIONS SHOWN ON THIS PLAN ARE IN METRES  
AND CAN BE CONVERTED TO FEET BY DIVIDING BY 0.3048

OTTAWA - CARLETON STANDARD  
CONDOMINIUM PLAN 744

PART 3,

LOT 305  
LOT 306  
5 R - 1354 2

TOPOGRAPHIC SURVEY OF  
PART OF LOT 330  
REGISTERED PLAN 372212  
PART OF LOT 21  
CONCESSION 2 (OTTAWA FRONT)  
CITY OF OTTAWA

SCALE 1 : 150  
0 1 2 5 10 15 metres  
FAIRHALL, MOFFATT & WOODLAND LIMITED  
ONTARIO LAND SURVEYORS

**ELEVATION NOTES**

- ELEVATIONS SHOWN HEREON ARE REFERRED TO GEODETIC DATUM (CVG2011).
- ELEVATIONS FOR MANHOLE COVERS AND CATCH BASINS HAVE TO BE INDEPENDENTLY CONFIRMED BEFORE THEY CAN BE ACCEPTED FOR FINAL DESIGN OR CONSTRUCTION PURPOSES.
- IT IS THE RESPONSIBILITY OF THE USER OF THIS INFORMATION TO VERIFY THAT THE JOB BENCHMARK HAS NOT BEEN ALTERED OR DISTURBED AND THAT ITS RELATIVE ELEVATION AND DESCRIPTION AGREE WITH THE INFORMATION SHOWN ON THIS DRAWING.

**UTILITY NOTES**

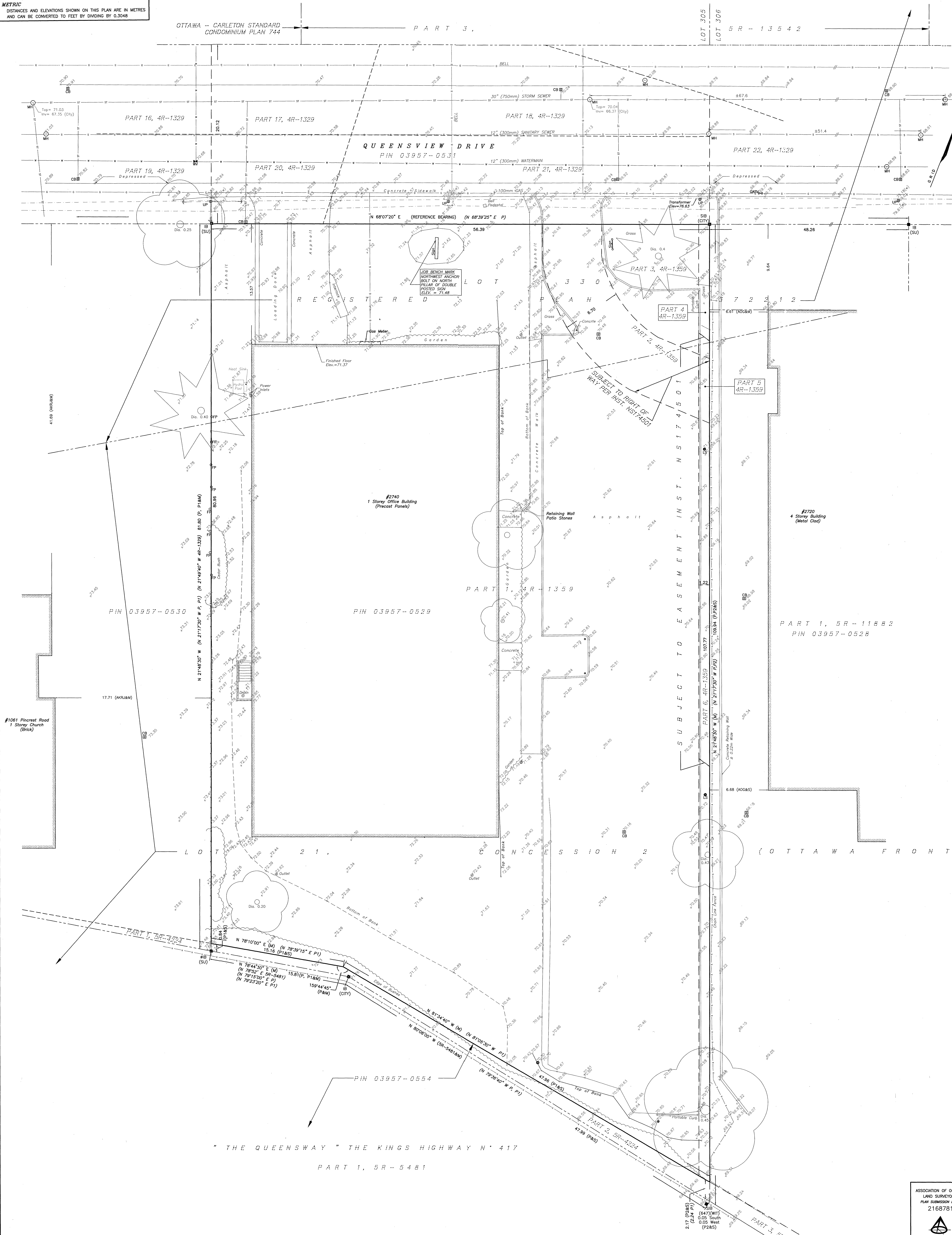
- THIS DRAWING CANNOT BE ACCEPTED AS ACKNOWLEDGING ALL UNDERGROUND UTILITIES AND IT IS THE RESPONSIBILITY OF THE USER TO CONTACT THE RESPECTIVE UTILITY AUTHORITIES FOR CONFIRMATION OR LOCATION.
- UNDERGROUND UTILITIES, AS REPORTED ON THIS DRAWING, ARE BASED ON AN ACTUAL 'FIELD LOCATE' BY THE RESPECTIVE UTILITY AGENCIES OR HAVE BEEN COMPILED FROM DATA OBTAINED FROM THE FOLLOWING SOURCE:  
a) CITY OF OTTAWA PUBLIC UTILITIES REGISTRY
- BEFORE ANY WORK INVOLVING PROBING, EXCAVATING, ETC., A FIELD LOCATION OF UNDERGROUND PLANT BY THE PERTINENT UTILITY AUTHORITY IS MANDATORY.

**NOTES**

- BEARINGS ARE GRID DERIVED FROM THE SOUTHERLY LIMIT OF QUEENSWAY DRIVE AS SHOWN ON PLAN 4R-1329 HAVING A BEARING OF N 68°07'20" E AND ARE REFERRED TO THE CENTRAL MERIDIAN 76°30' W LONGITUDE, MTM ZONE 9 (NAD83 ORIGINAL).
- DISTANCES ARE GROUND AND CAN BE CONVERTED TO GRID BY MULTIPLYING BY THE COMBINED SCALE FACTOR OF 0.999932.

**LEGEND**

- - SURVEY MONUMENT FOUND
- SB - STANDARD IRON BAR
- SSB - SHORT STANDARD IRON BAR
- IB - IRON BAR
- CP - CONCRETE PIN
- (SU) - SOURCE UNKNOWN
- (W) - WITNESS
- PN - PROPERTY IDENTIFIER NUMBER
- (P) - PLAN 4R-1329
- (P1) - PLAN SR-4224
- (P2) - PLAN SR-11882
- (S) - SET
- (M) - MEASURED
- (AG) - ANNIS, O'SULLIVAN, VOLLEBEKK LTD., O.L.S. (PLAN OF SURVEY OF #2720 QUEENSWAY DRIVE DATED MAY 25, 2000)
- (CITY) - CITY OF OTTAWA
- (AKR) - ARNETT, KENNEDY, RIDDELL & JASON SURVEYING LTD., O.L.S. (REF. 705-83, 221-80)
- (647) - H. R. FARLEY, O.L.S.
- CB - CATCHBASIN
- GV - GAS VALVE
- LS - LAMP STANDARD
- UP - UTILITY POLE
- GA - GUY WIRE AND ANCHOR
- FP - FLAG POLE
- MH - MANHOLE
- B - BOLLARDS
- MH - MANHOLE
- W - WELL
- DT - DECIDUOUS TREE
- CF - CONIFEROUS TREE
- S - SANITARY SEWER
- ST - STORM SEWER
- W - WATERMAIN
- G - GAS LINE
- B - BELL
- OW - OVERHEAD UTILITY WIRES
- A - ATRIA (FIBER OPTICS)
- F - FENCE
- C - CURB



© COPYRIGHT 2021. REPRODUCTION, ALTERATION OR DISTRIBUTION OF THIS PLAN WITHOUT THE WRITTEN CONSENT OF FAIRHALL, MOFFATT & WOODLAND LIMITED IS PROHIBITED.

**SURVEYOR'S CERTIFICATE**

- I CERTIFY THAT:  
1. THIS SURVEY AND PLAN ARE CORRECT AND IN ACCORDANCE WITH THE SURVEYS ACT, THE SURVEYORS ACT, THE LAND TITLES ACT AND THE REGULATIONS MADE UNDER THEM.
- THE SURVEY WAS COMPLETED ON APRIL 30, 2021.

ASSOCIATION OF ONTARIO  
LAND SURVEYORS  
PLAN SUBMISSION FORM  
2168781

THIS PLAN IS NOT VALID  
UNLESS IT IS AN EMBOSSED  
ORIGINAL COPY  
ISSUED BY THE SURVEYOR  
Registration 1025/2019/03/03

2021/05/17  
DATE  
JOHN H. CURRO  
ONTARIO LAND SURVEYOR

Fairhall  
Moffatt &  
Woodland  
ONTARIO LAND SURVEYORS  
Surveying and Land Information Services  
100-402 TRINITY FOX DRIVE, KANAWA, ONTARIO L2K 4R6  
TEL: (615) 591-2500 FAX: (615) 591-1465  
www.fairhall.com

JOB No.  
A B 17700  
E 360484, N 5023782  
REFERENCE No.  
11-372212  
S:\008\017700\06 13.05.2021  
TP\_AB177.dwg (ns)