

DRAWINGS NOTES

1 TYPICAL: PROVIDE NEW LIGHT FIXTURE, TYPE AS INDICATED. REFER TO LIGHTING FIXTURE SCHEDULE ON THIS DRAWING FOR ADDITIONAL INFORMATION. REFER TO DETAIL 2 ON THIS DRAWING FOR CONCRETE POLE BASES DETAIL. REFER TO DETAIL 3 ON THIS DRAWING FOR DIRECT BURIED CONDUIT DETAIL. PROVIDE PHOTOCELL AND TIMECLOCK C/W CONTACTORS AS REQUIRED TO CONTROL ALL OUTDOOR LIGHTING.

2 PROVIDE CONDUITS IN CONCRETE ENCASED DUCT BANK FOR SECONDARY CABLES FROM PADMOUNT TRANSFORMER TO MAIN ELECTRICAL ROOM. REFER TO DETAILS 3 & 4 ON THIS DRAWING FOR ADDITIONAL INFORMATION.

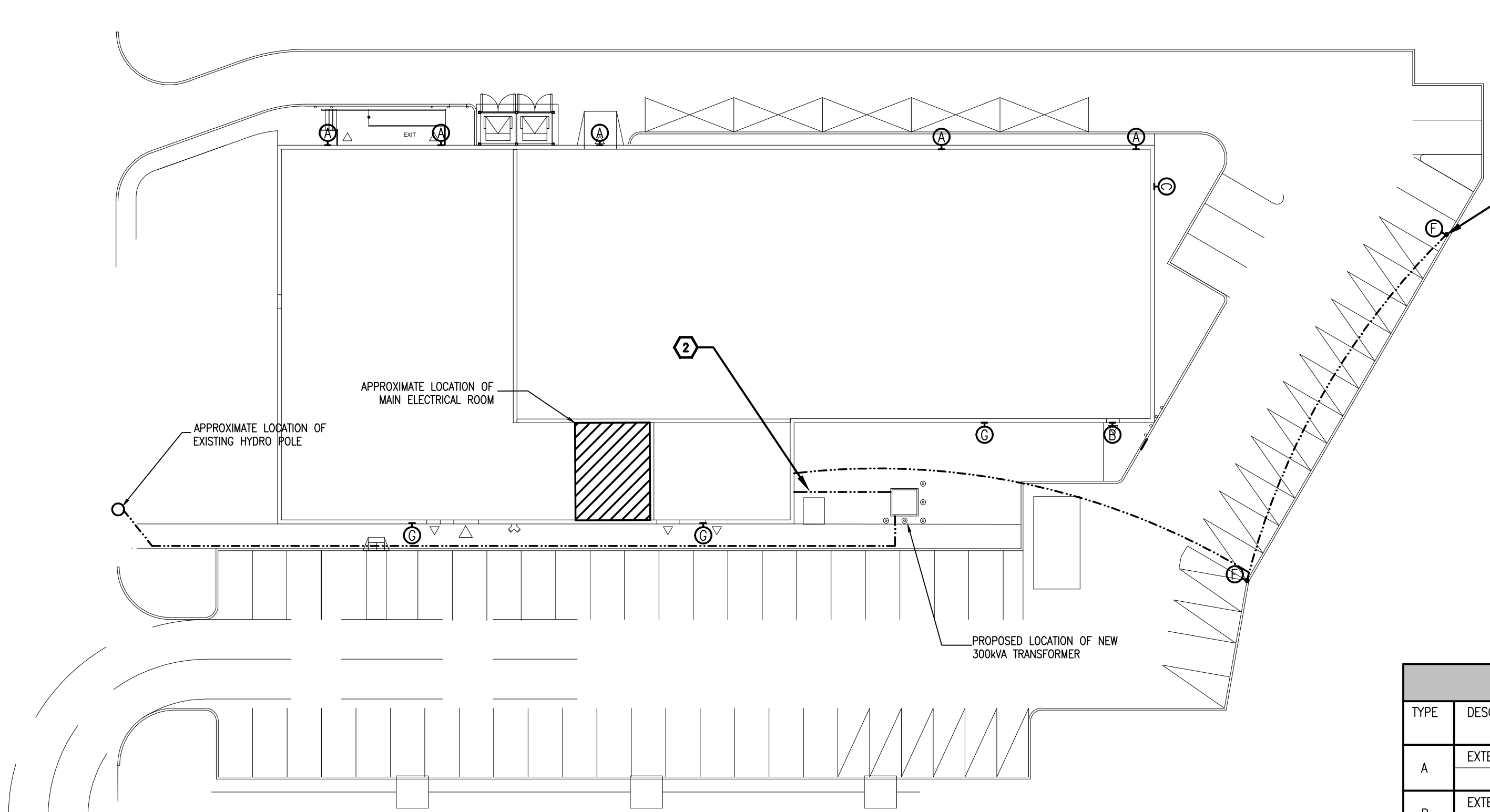
GENERAL NOTES

1. COORDINATE EXACT LOCATION OF LIGHT FIXTURES WITH ARCHITECT AND INTERIOR DESIGNER.

2. COORDINATE ROUTING OF DUCTBANK AND DIRECT BURIED CONDUITS WITH ALL OTHER UNDERGROUND SERVICES.

LEGEND

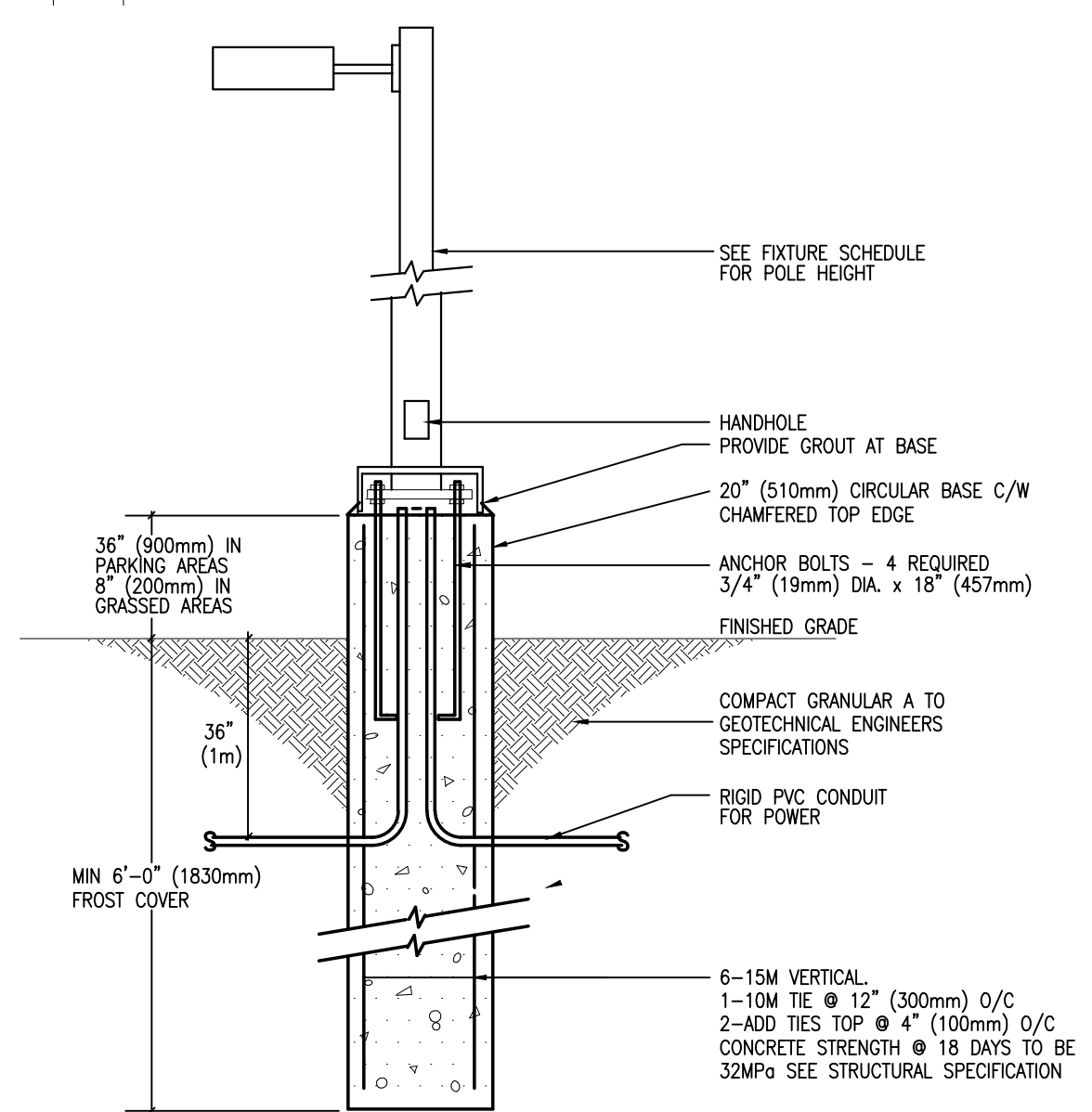
SYMBOL	DESCRIPTION
(A)	EXTERIOR LED AREA LUMINAIRE, TYPE AS INDICATED
(A)	EXTERIOR LED WALL PACK, TYPE AS INDICATED
---	BURIED CONDUIT



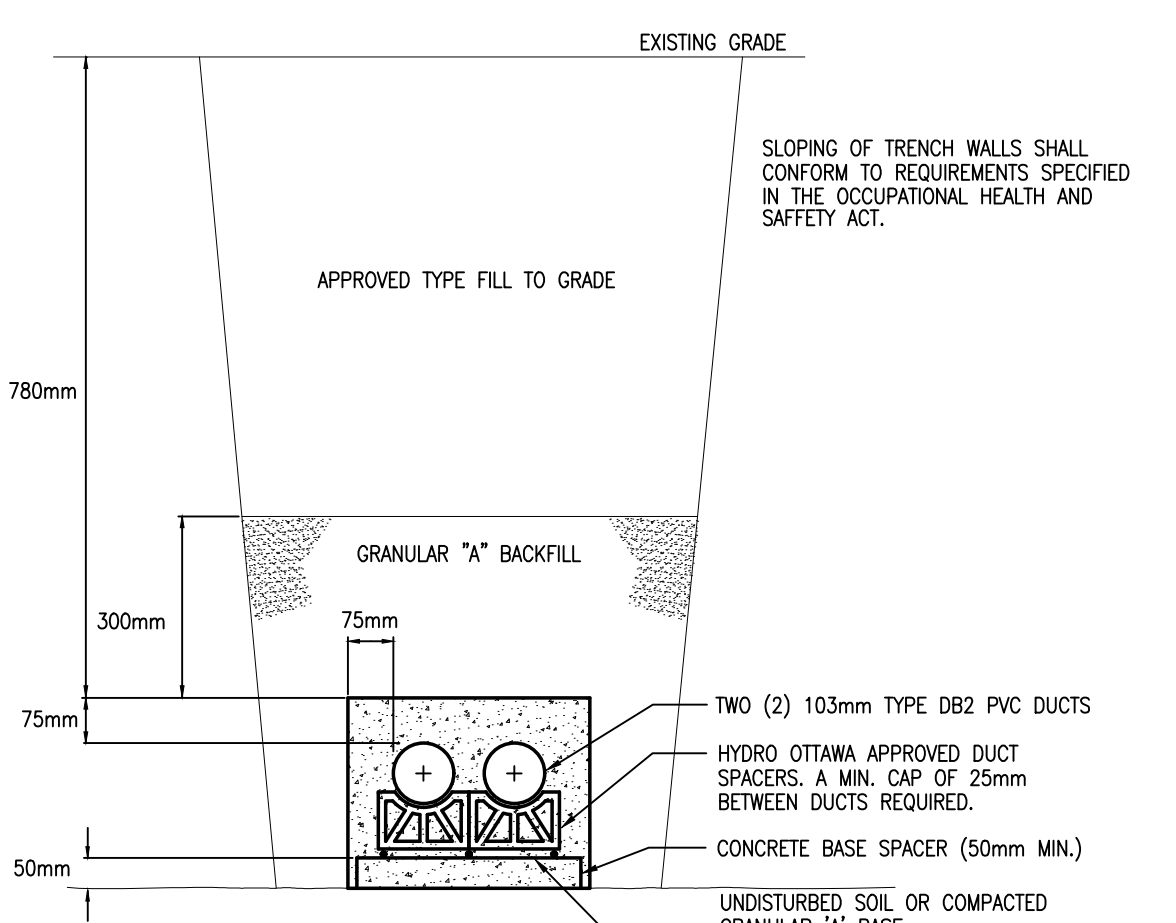
1 ELECTRICAL SITE PLAN
E002 1:300

LIGHTING FIXTURE SCHEDULE

TYPE	DESCRIPTION	CATALOG NUMBER	LAMPS PER FIXTURE			VOLT	MOUNTING	REMARKS
			QTY	TYPE	WATTS			
A	EXTERIOR LED WALLPACK	LITHONIA LIGHTING WDGE3-LED-P1-70CRI-R2-40K	1	LED	51.7W	4000K	347V	PROVIDE HOUSE SIDE SHIELD AS REQUIRED MOUNTING HEIGHT : 14'
B	EXTERIOR LED WALLPACK	LITHONIA LIGHTING WDGE1-LED-P1-80CRI-40K-VW	1	LED	10W	4000K	347V	PROVIDE HOUSE SIDE SHIELD AS REQUIRED MOUNTING HEIGHT : 14'
C	EXTERIOR LED WALLPACK	LITHONIA LIGHTING WDGE3-LED-P2-70CRI-RFT-40K	1	LED	60W	4000K	347V	PROVIDE HOUSE SIDE SHIELD AS REQUIRED MOUNTING HEIGHT : 14'
F	EXTERIOR LED AREA LUMINAIRE	LITHONIA LIGHTING DSXO-LED-P1-40K-BLC-MVOLT	1	LED	38W	4000K	347V	PROVIDE HOUSE SIDE SHIELD AS REQUIRED MOUNTING HEIGHT : 15'
G	EXTERIOR LED WALLPACK	LITHONIA LIGHTING WDGE4-LED-P6-70CRI-RFT-40K	1	LED	185W	4000K	347V	PROVIDE HOUSE SIDE SHIELD AS REQUIRED FIXTURE MOUNTED AT 20'



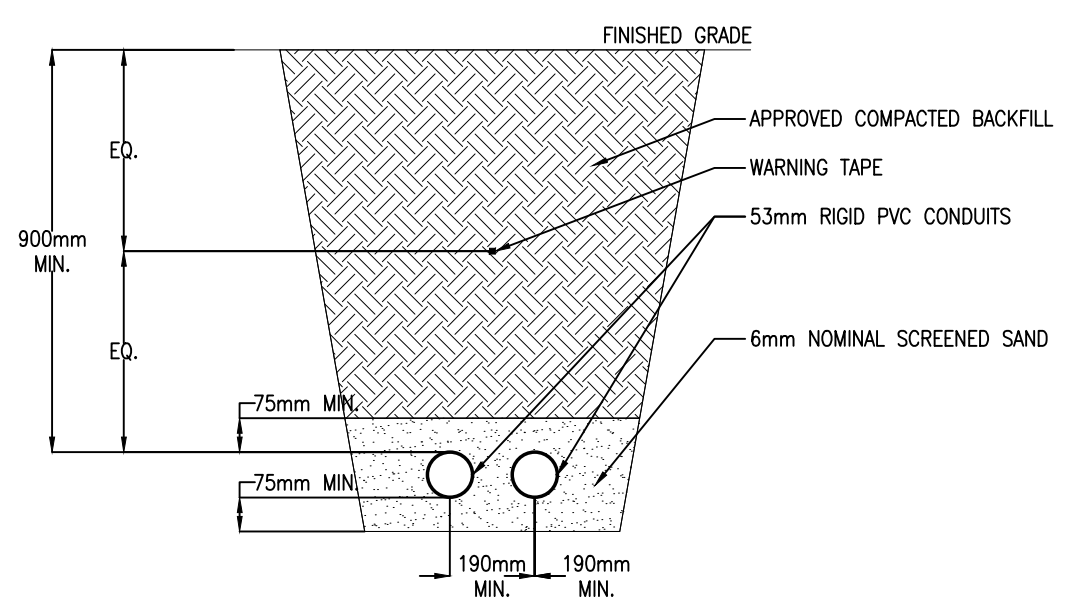
2 BASE DETAIL FOR EXTERIOR LIGHT STANDARD
E002 N.T.S.



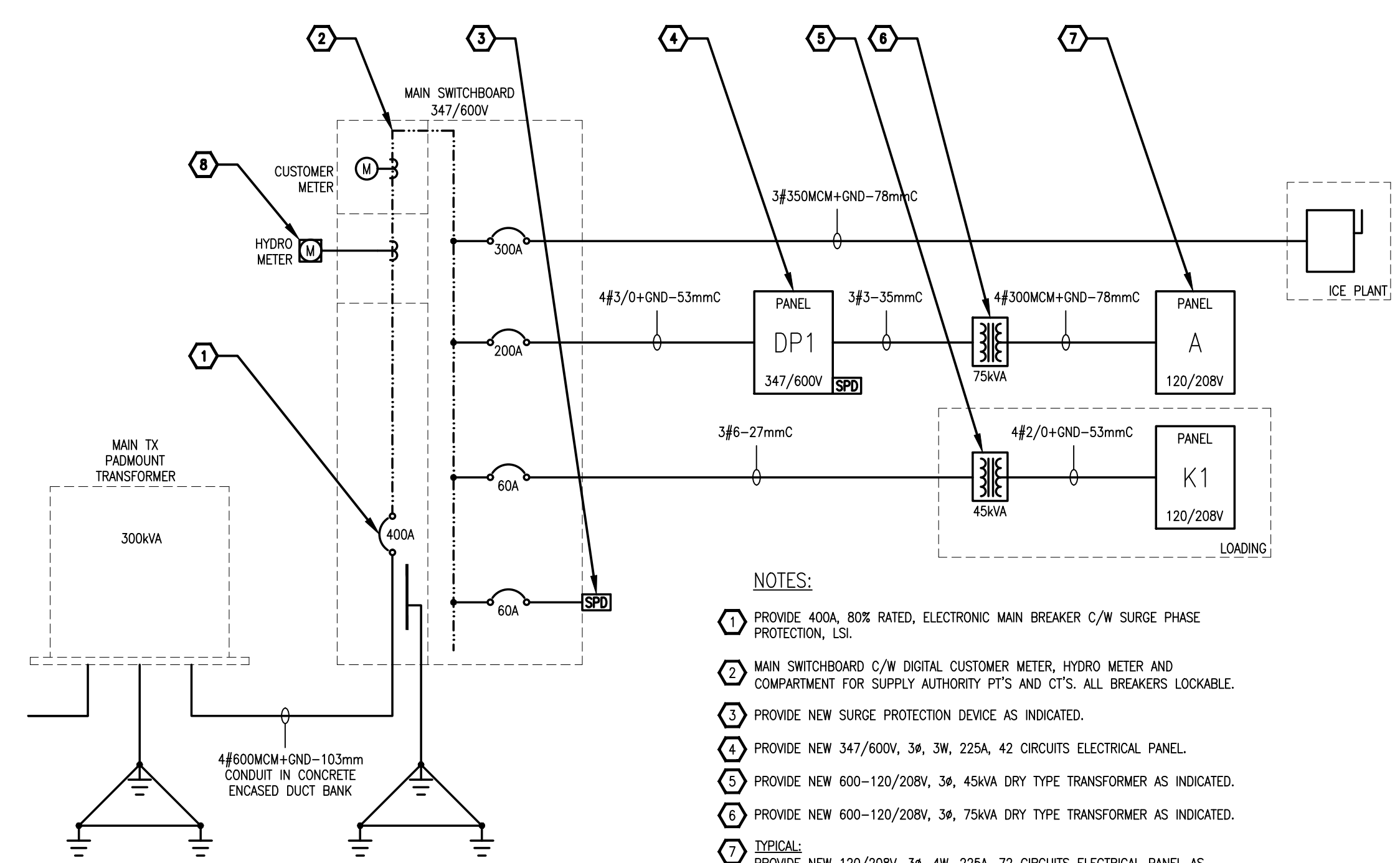
NOTES:

- CSA C222 No. 211.1 APPLIES TO ALL PVC DUCTING.
- ONLY MATERIAL APPROVED BY HYDRO OTTAWA TO BE USED.
- DUCT JOINTS TO BE GLUED USING AN APPROVED "PVC" SOLVENT, WHEN APPLICABLE.
- REINFORCING RODS FULL LENGTH OF CONCRETE ENCASED DUCTS. OVERLAP JOINTS AND TIE AT BOTH ENDS. DRILL AND DOWEL RODS TO CONCRETE STRUCTURE.
- DUCT SPACERS TO BE PLACED AT A MAXIMUM OF 1500mm AND WITHIN 150mm OF COUPLING. PLASTIC DUCT SPACERS TO BE USED ONLY IF CONCRETE DUCT SPACERS ARE UNAVAILABLE.
- FORMS REQUIRED FOR FULL LENGTH OF CONCRETE ENCASED DUCT STRUCTURE.
- DUCTS AND TRENCHES MUST BE INSPECTED BY HYDRO OTTAWA BEFORE ANY CONCRETE IS POURED.
- ALL UNDERGROUND UTILITIES MUST BE CONTACTED AND ALL NECESSARY PERMITS MUST BE OBTAINED BY OWNER OR CONTRACTOR.
- CONTRACTOR MUST ENSURE THAT ALL DUCTS ARE CLEANED, RODDED AND THAT A 6mm POLYPROPYLENE ROPE IS LEFT IN EACH DUCT.

4 CONCRETE ENCASED DUCT BANK DETAIL
E002 N.T.S.



3 DIRECT BURIED CONDUIT DETAIL
E002 N.T.S.



NOTES:

- PROVIDE 400A, 80% RATED, ELECTRONIC MAIN BREAKER C/W SURGE PHASE PROTECTION, LSI.
- MAIN SWITCHBOARD C/W DIGITAL CUSTOMER METER, HYDRO METER AND COMPARTMENT FOR SUPPLY AUTHORITY PT'S AND CT'S. ALL BREAKERS LOCKABLE.
- PROVIDE NEW SURGE PROTECTION DEVICE AS INDICATED.
- PROVIDE NEW 347/600V, 3ø, 3W, 225A, 42 CIRCUITS ELECTRICAL PANEL.
- PROVIDE NEW 600-120/208V, 3ø, 45kVA DRY TYPE TRANSFORMER AS INDICATED.
- PROVIDE NEW 600-120/208V, 3ø, 75kVA DRY TYPE TRANSFORMER AS INDICATED.
- TYPICAL: PROVIDE NEW 120/208V, 3ø, 4W, 225A, 72 CIRCUITS ELECTRICAL PANEL AS INDICATED.
- PROVIDE 13-JAW METER BASE C/W 35mm CONDUIT, PROVIDE 1200mm X 1200mm X 16mm PLYWOOD BACKBOARD WITH FIRE RATED PAINT.

5 ELECTRICAL SINGLE LINE DIAGRAM
E002 N.T.S.

Client

DATE	REVISION	REF
2021-10-21	ISSUED FOR FINAL SITE PLAN APPROVAL	2
2021-10-06	RE-ISSUED FOR SITE PLAN APPROVAL	1
2021-07-28	ISSUED FOR SITE PLAN APPROVAL	0

THE ENGINEER WAKES ANY AND ALL RESPONSIBILITY AND LIABILITY FOR PROBLEMS WHICH ARISE FROM FAILURE TO FOLLOW THESE PLANS, SPECIFICATIONS AND THE DESIGN INTENT THEY CONVEY, OR FOR PROBLEMS WHICH ARISE FROM OTHER FAILURE TO OBTAIN AND / OR FOLLOW THE ENGINEER'S GUIDANCE WITH RESPECT TO ANY ERRORS, OMISSIONS, INCONSISTENCIES, AMBIGUITIES OR CONFLICTS WHICH ARE ALLEGED.

THIS DRAWING IS THE PROPERTY OF GOODKEY WEEDMARK & ASSOCIATES LIMITED AND ALL COPYRIGHTS ARE RESERVED. NO USE OF THIS DRAWING MAY BE MADE WITHOUT EXPRESS WRITTEN CONSENT.

DO NOT SCALE DRAWINGS.

L'INGÉNIEUR DÉCLINE TOUTE RESPONSABILITÉ DÉCOULANT DE PROBLÈMES FAISANT SUITE AU NON RESPECT DES PLANS, DEVIS ET DE L'INTENTION DU CONCEPT OÙ/LS INDICENT OU DE TOUTS LES PROBLÈMES POUVANT RÉSULTER DU DÉFAUT D'OBTENIR ET / OU DE SUIVRE LES CONSEILS DE L'INGÉNIEUR EN CE QUI CONCERNE LES ERREURS, OMISSIONS, INCONSISTANCES, AMBIGUITÉS OU CONFLITS ALLEGUÉS.

CE DESSIN EST LA PROPRIÉTÉ LITTÉRAIRE DE GOODKEY WEEDMARK & ASSOCIATES LIMITED ET TOUTS LES DROITS SONT RÉSERVÉS. L'UTILISATION EST INTERDITE SANS LE CONSENTEMENT ÉCRIT DE L'AUTEUR.

NE PAS MESURER LES DESSINS À L'ÉCHELLE

Goodkey Weedmark Consulting Engineers

GOODKEY WEEDMARK & ASSOCIATES LIMITED
1688 Woodward Dr. Ottawa Ontario Canada K2C 3R8
613 727-5111 Voice
613 727-5115 Fax
www.gwal.com Web

Project north Nord du projet

Seal/Scelus

LICENSED PROFESSIONAL ENGINEER
OCT 21 2021
R. M. BOVIN
100122674
PROVINCE OF ONTARIO

Project/Projet
GRANITE CURLING CLUB
2740 QUEENSWAY DRIVE
OTTAWA, ONTARIO

Drawing title/Titre du dessin
ELECTRICAL SITE PLAN

Scale/Echelle	AS NOTED	Project no./No. du projet	2021-280
Design by/Conçu par	N. OUDERKIRK	Drawing/Dessin	E002
Drawn by/Dessiné par	N. OUDERKIRK	Reviewed by/Examiné par	R. BOVIN
Date	JULY 2021	Revision no.	—
Date		Acad file/Fichier	—