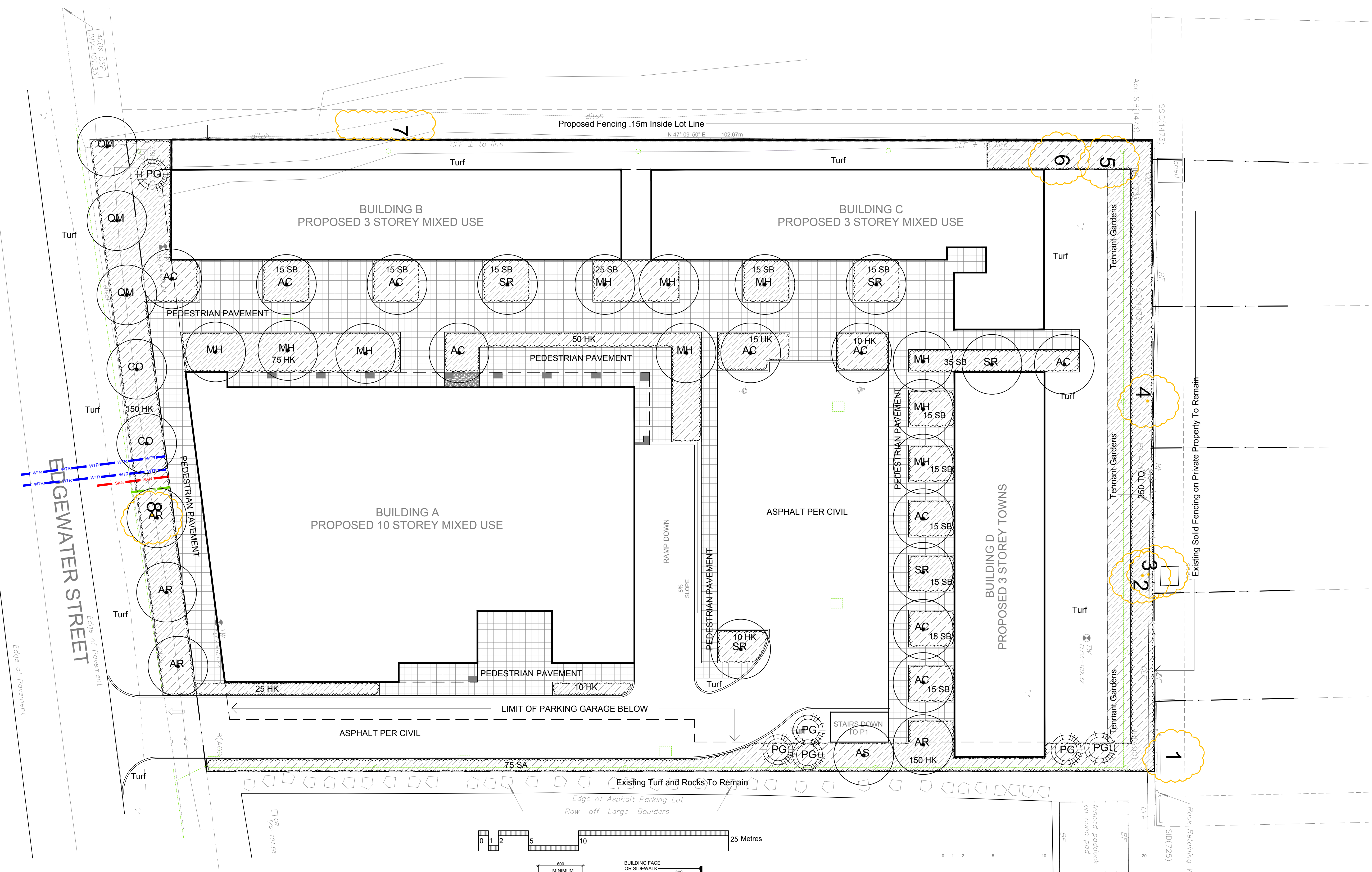


Drawing Remains the Property of/Copyright Reserved by Gino J. Aiello Landscape Architect. Do Not Use or Reproduce Without Approval of Gino J. Aiello. **NOT To Be Used For Construction Unless** indicated by Revision: **"FOR LANDSCAPE CONSTRUCTION"**. **Contractor is Responsible** for Verification of Site Locations of all Utilities. Report any Discrepancies Between Site and Drawing Immediately to Gino J. Aiello. Do NOT Proceed Until Clarified.

TURF AREAS TO BE SOD C/W 150MM DEPTH TOPSOIL ON APPROVED SUBGRADE | SOD TO BE #1 GRADE TURFGRASS NURSERY SOD per NSGA - Fine Fescue/Kentucky Bluegrass Sod | PLANTING MIX TO BE APPROVED BY LANDSCAPE ARCHITECT | PLANT MATERIAL TO MEET CNLA STANDARDS/BE APPROVED BY LANDSCAPE ARCHITECT PRIOR TO PLANTING | ALL MATERIALS & WORK TO BE MAINTAINED UNTIL FINAL ACCEPTANCE. (MOWING TURF, WEEDING BEDS, WATERING TURF & PLANTS) & INCLUDE 1 YEAR WARRANTY FROM DATE OF FINAL ACCEPTANCE | PROVIDE WATERING OF ALL PLANT MATERIAL AS REQUIRED FOR PROPER ESTABLISHMENT, UNTIL END OF WARRANTY PERIOD | REFER TO CIVIL ENGINEER'S DRAWING FOR ELEVATIONS / GRADING |

The Landscape Plan is to be read in conjunction with the grading, servicing, site and survey plan | Bare root material to be planted in season only | All plant material locations to be staked on site by the landscape contractor and checked by the landscape architect prior to planting | All trees to be preserved on or directly adjacent to the site will be protected | Plant material are to be installed a minimum of 3.0m away from any part of any hydro transformer, 3.0m corridor between a fire hydrant and the curb, a 2.5m radius beside or behind a fire hydrant, 2.0m from any servicing/utility line or structure |



REFER TO TCR BY IFS

1 Existing Tree - Refer TO TCR by IFS for Details/Actions

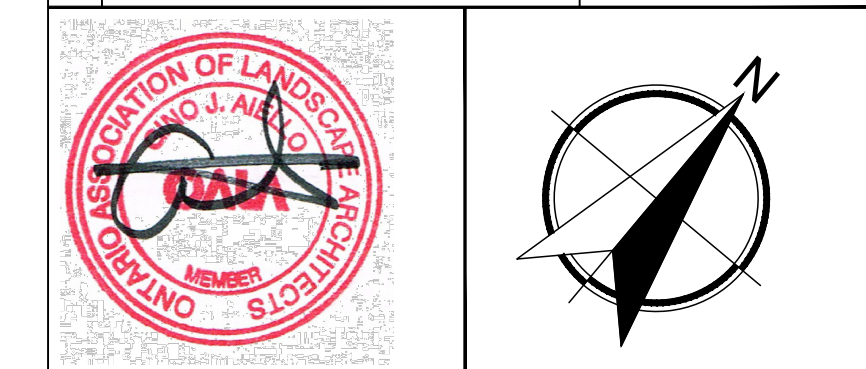
LANDSCAPE PLAN LEGEND

- Proposed Pedestrian Pavement
- Proposed Coniferous Tree
- Proposed Deciduous Tree
- Proposed Planting Bed
- Proposed Riverwash Stone On Filter Cloth

BELOW GRADE SERVICES REFER TO CIVIL /CUP

- U/G Water Service
- U/G Storm Service
- U/G Sanitary Service

1	FIRST SUBMISSION SPC	OCTOBER 26 2021
0	COORDINATION / REVIEW	OCTOBER 2021
No.	Revision	Date



PARK RIVER PROPERTIES
206-900 BOULEVARD DE LA CARRIERE,
GATINEAU, QC, J8Y 6T5

Property Owner
Gino J. Aiello | landscape architect GJALA.com
GJA Inc. Gino@GJALA.com (613) 286 5130
110 Dabury Road Unit # 9 | Ottawa Ontario | K2T 0C2

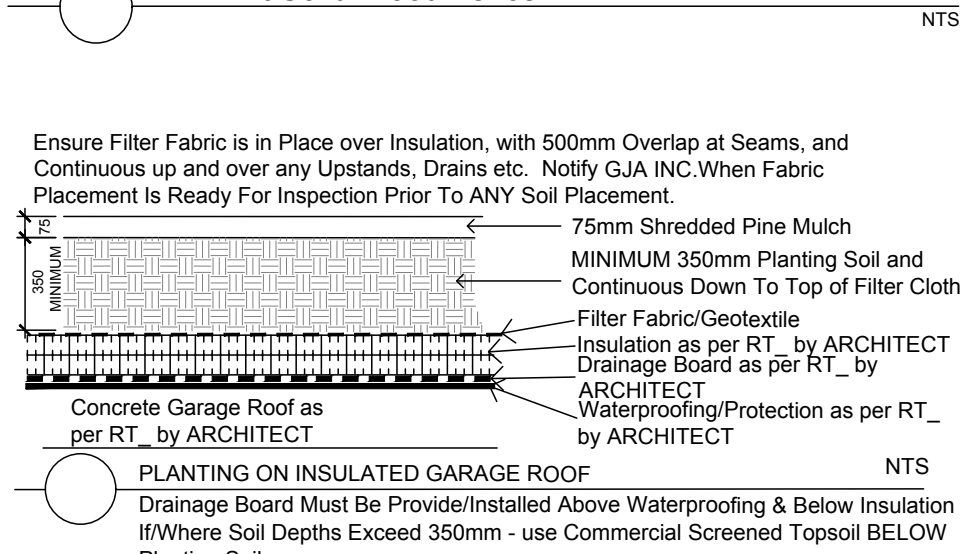
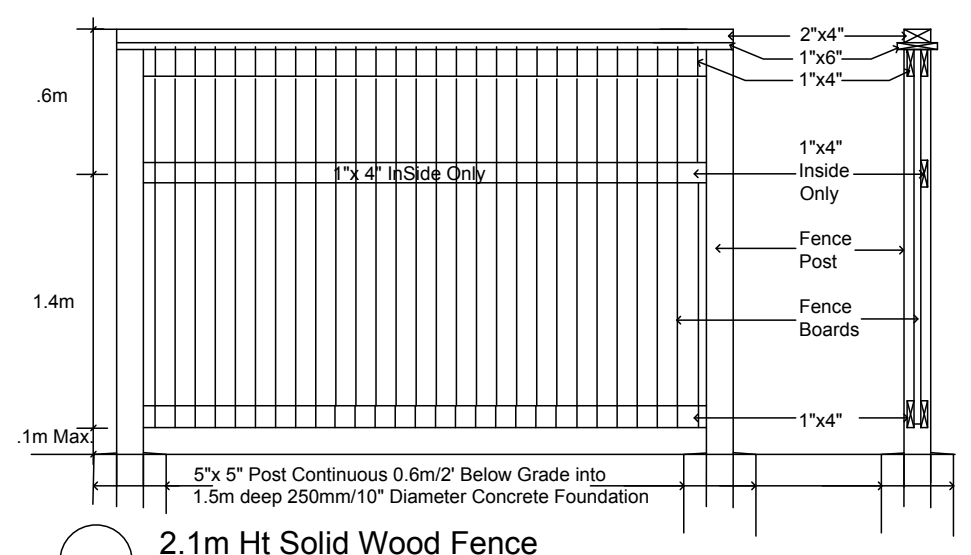
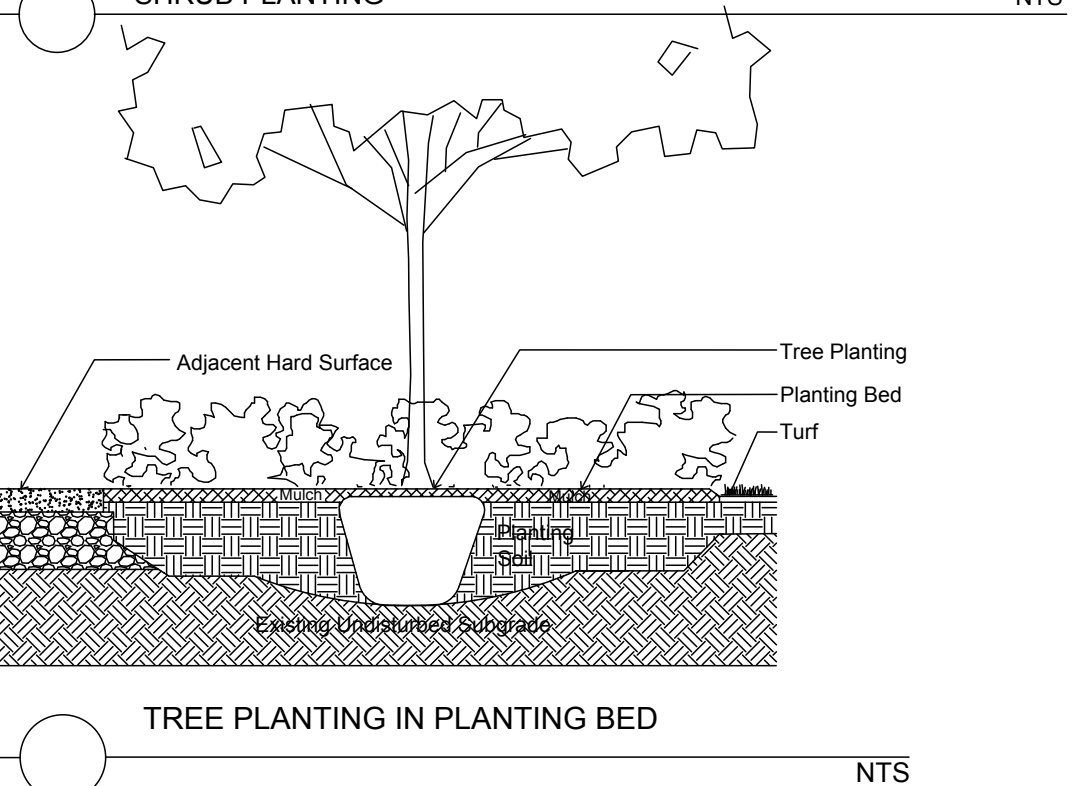
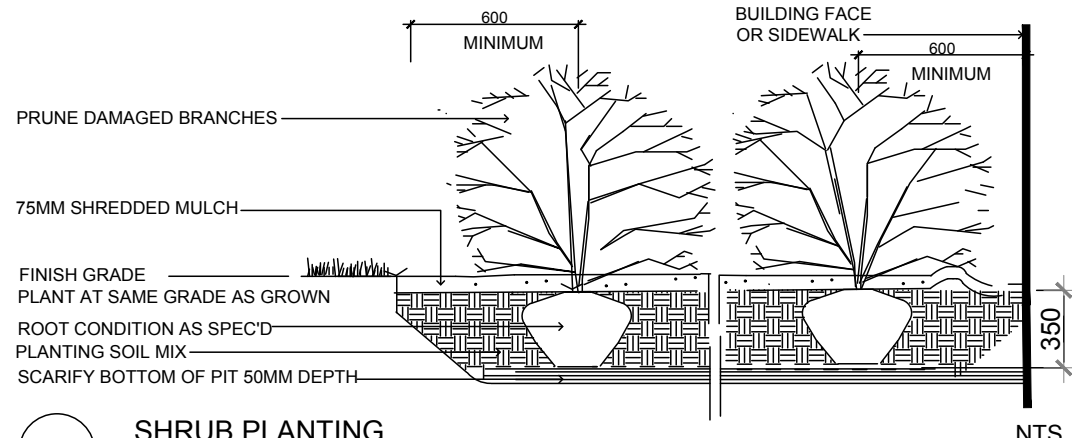
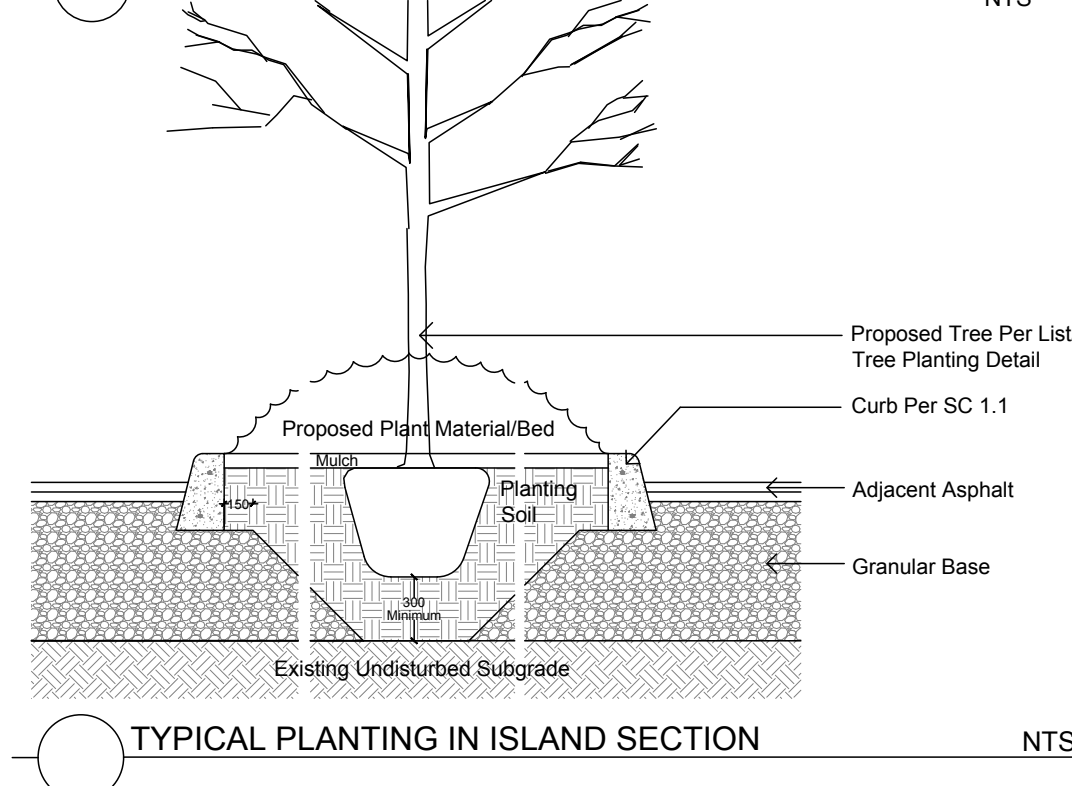
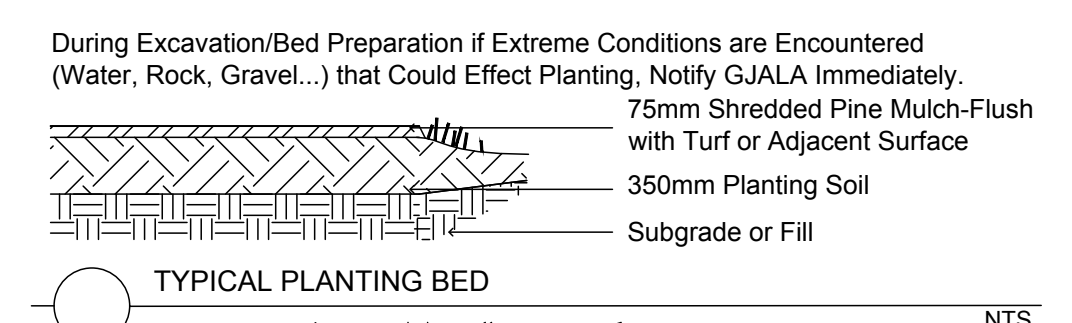
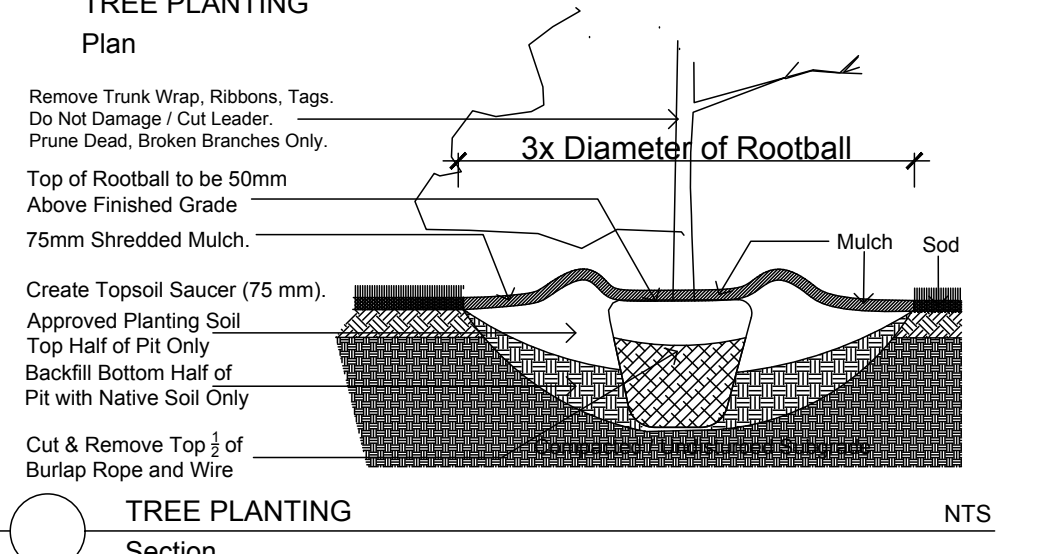
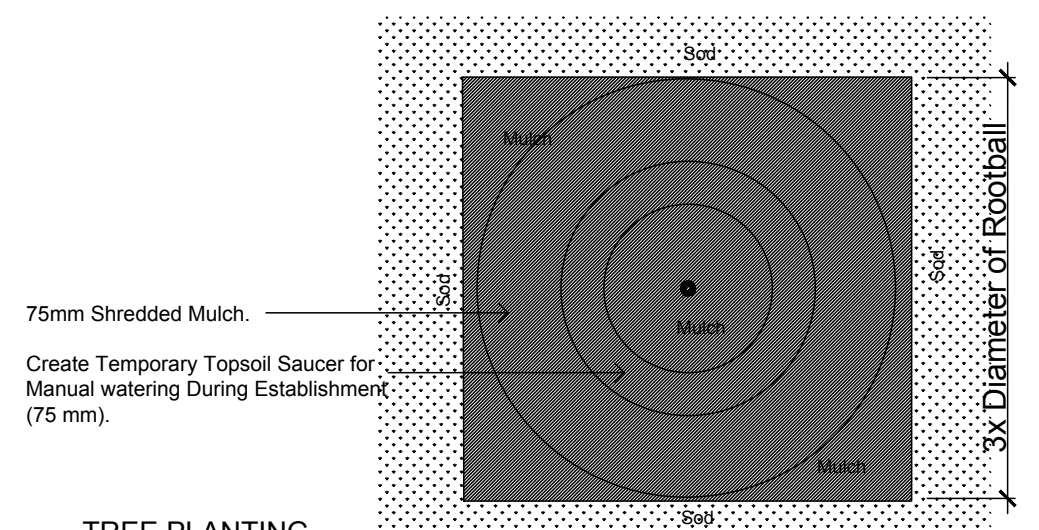
MIXED USE DEVELOPMENT
Project 16 EDGEWATER STREET KANATA

Drawing **Landscape Plan**

Scale: 1:200
City of Ottawa
Dwg - #####

L1

D07-####



CALIPER B AND B TREES - 16 EDGEWATER KANATA

Code	Qty.	Botanical Name	Common Name	Size	Condition
AC	10	Amelanchier canadensis	Tree Serviceberry	60mm cal	B + B specimen
AR	4	Acer rubrum	Red Maple	70mm cal	B + B specimen
AS	1	Acer saccharum	Sugar Maple	70mm cal	B + B specimen
CO	2	Celtis occidentalis	Common Hackberry	70mm cal	B + B specimen
MH	9	Malus 'Harvest Gold'	Harvest Gold Crabapple	60mm cal	B + B specimen
QM	3	Quercus macrocarpa	Burr Oak	70mm cal	B + B specimen
SR	5	Syringa reticulata 'Ivory Silk'	Ivory Silk Tree Lilac	60mm cal	B + B specimen
PG	6	Picea glauca	White Spruce	2.0m Ht.	B + B specimen

SHRUBS - 16 EDGEWATER KANATA

Code	Qty.	Botanical Name	Common Name	Size	Condition
HK	500	Hypericum kalmianum	St. John's Wort	30cm Ht.	Pot
SA	75	Spiraea alba	Meadowsweet	60cm Ht.	Pot
SB	225	Spiraea bumalda 'Dart's Red'	Dart's Red Spirea	40cm Ht.	Pot
TO	350	Thuja occidentalis	White Cedar	1.0m Ht.	Bare Root