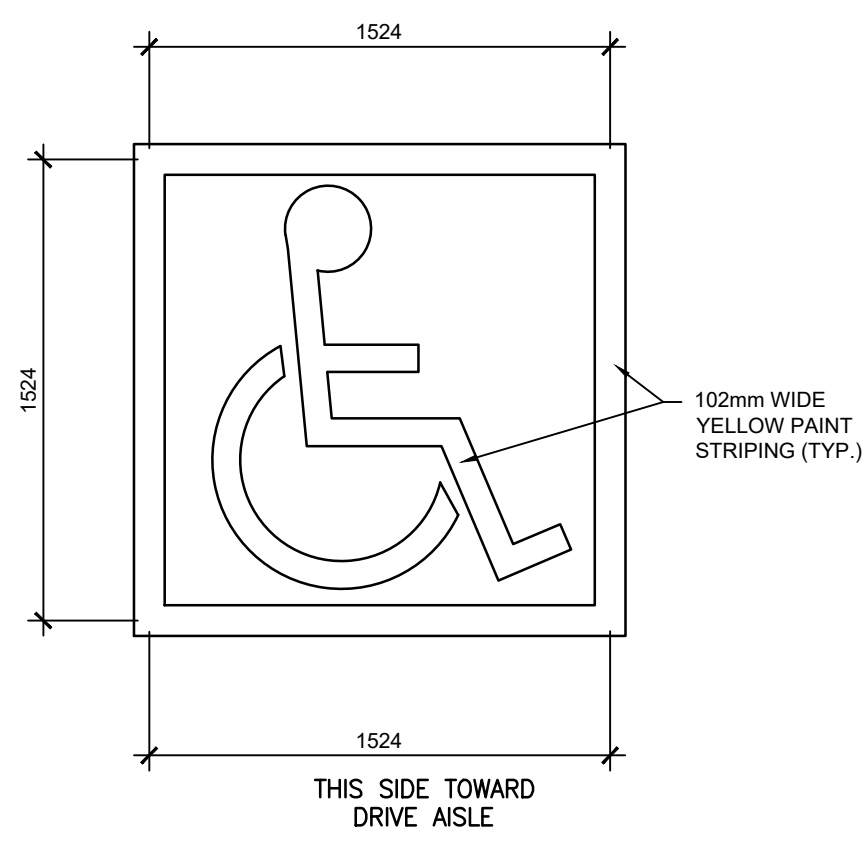
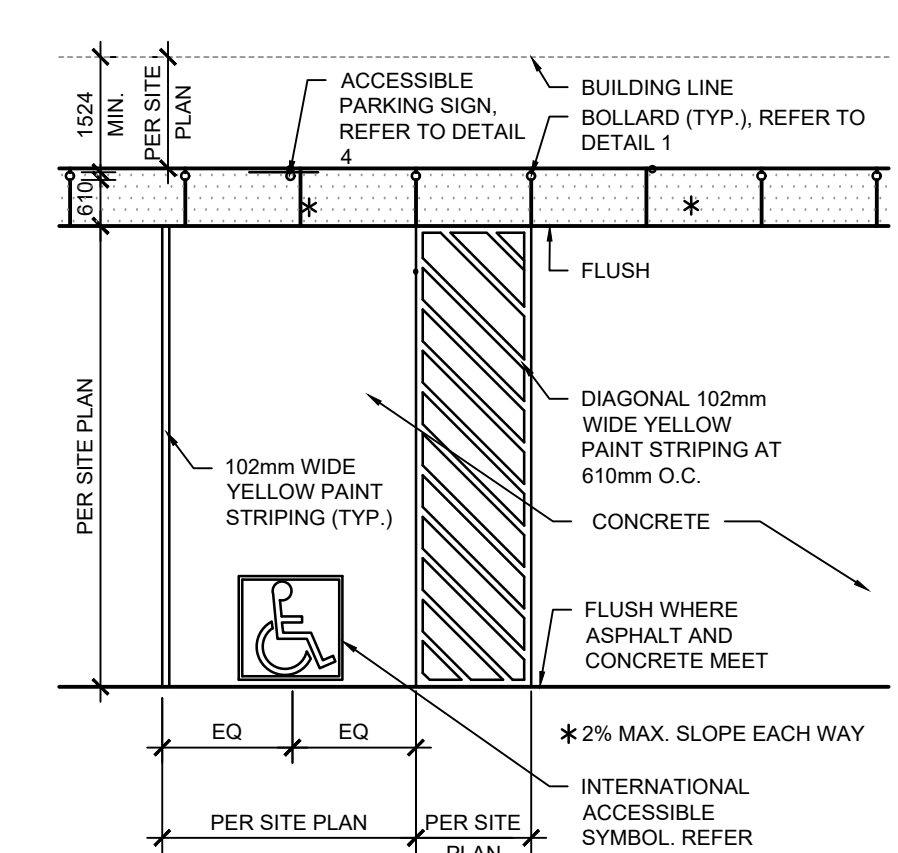


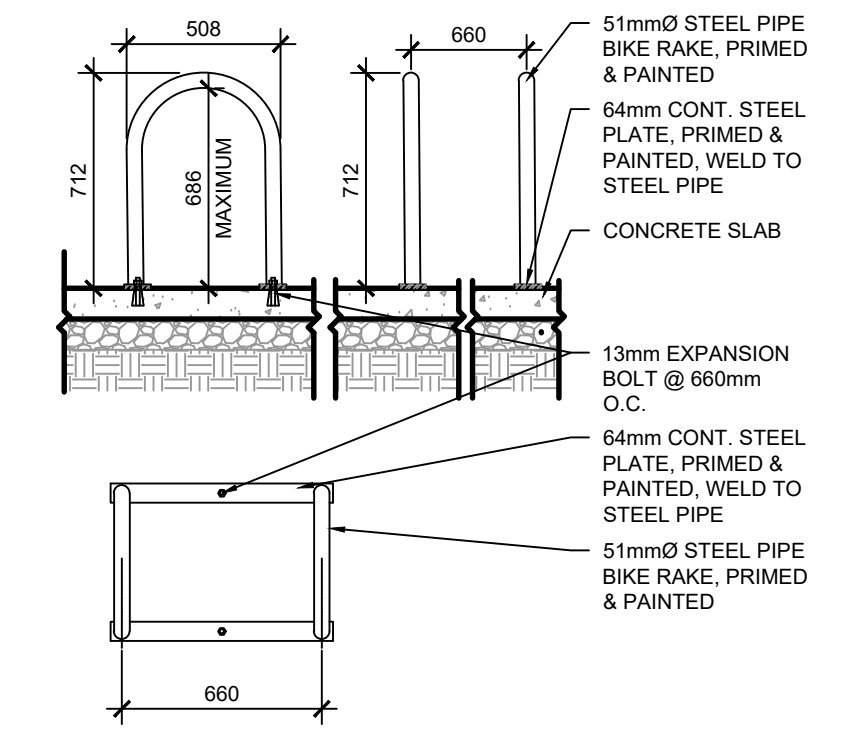
**GENERAL NOTES:**  
 1. REFER TO SITE PLAN FOR CORRECT ORIENTATION AND LAYOUT. IN SOME CASES MINIMUM DIMENSIONS ARE NOTED BUT SITE PLAN DIMENSIONS TAKE PRECEDENCE.



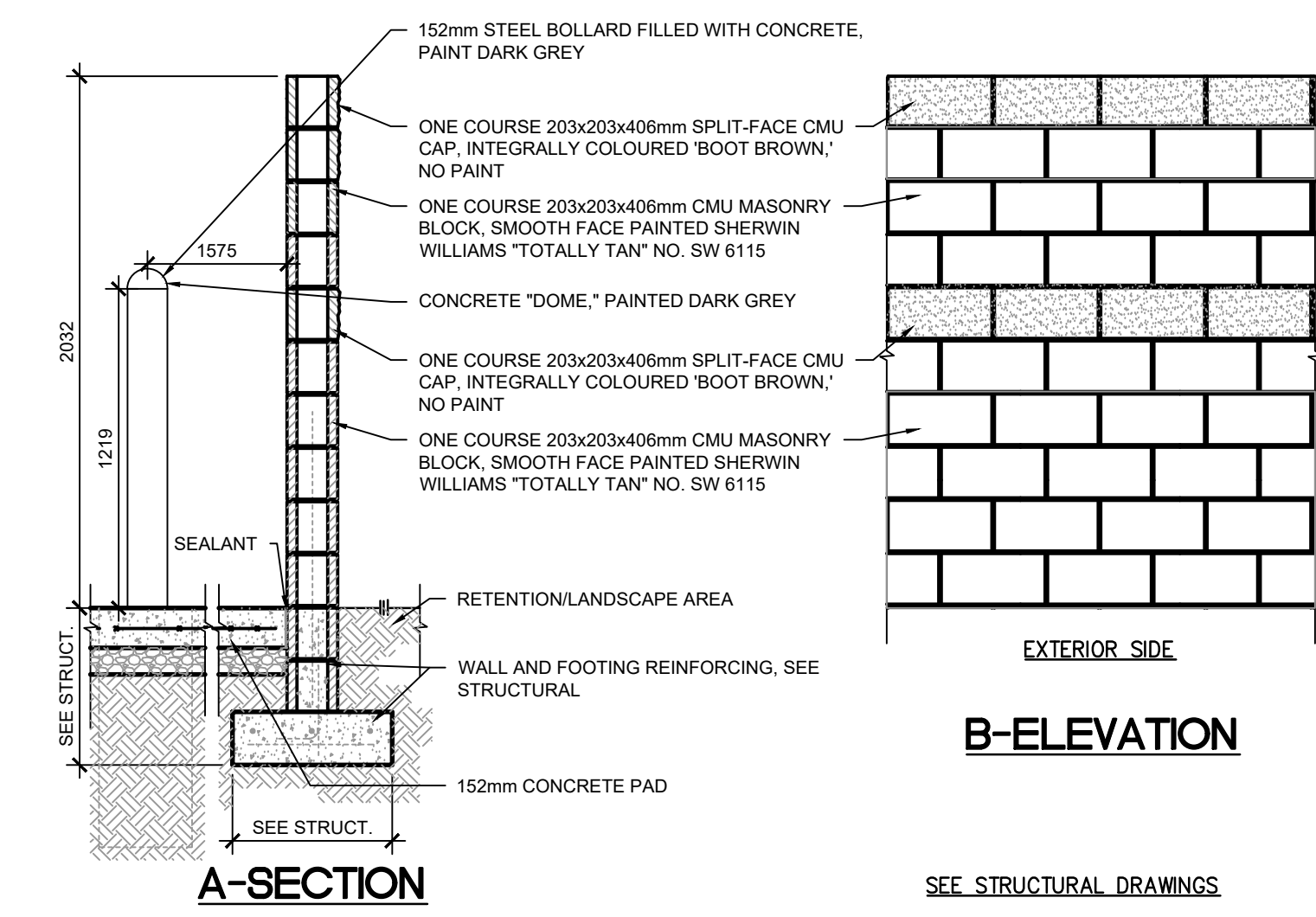
12 ACCESSIBLE PARKING SYMBOL  
SCALE 1:25



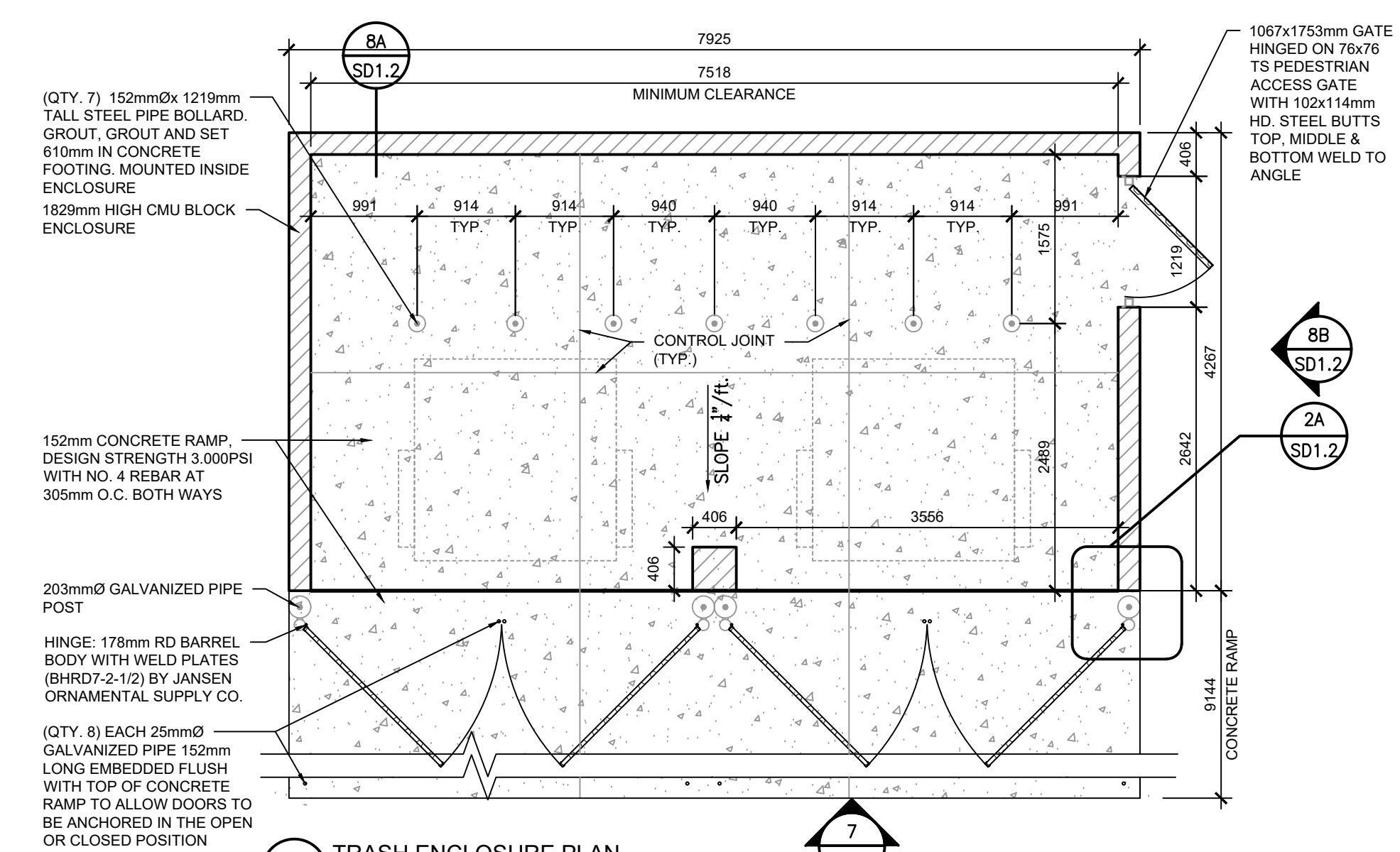
9 ACCESSIBLE PARKING STALL  
SCALE 1:100



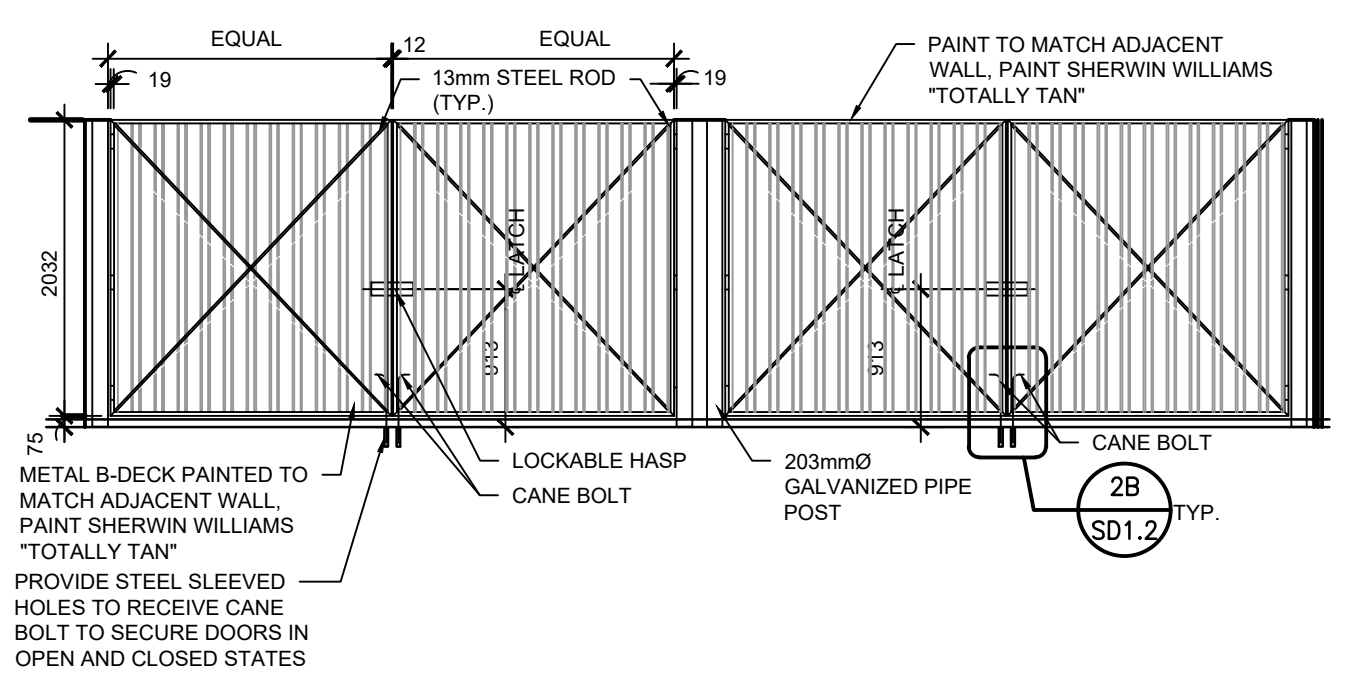
11 BIKE RACK (TYP.)  
SCALE 1:25



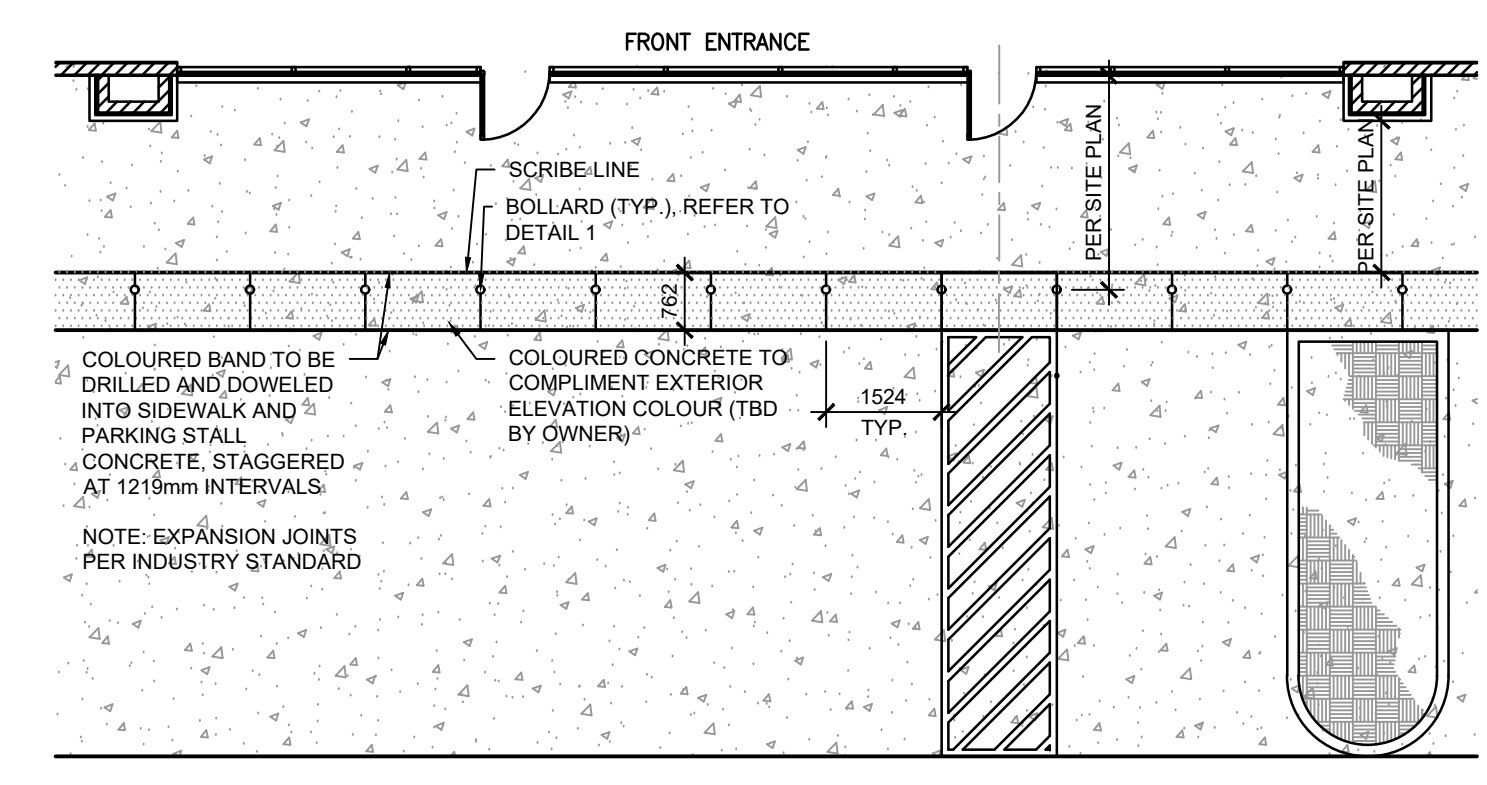
8 1829 TRASH ENCLOSURE  
SCALE 1:25



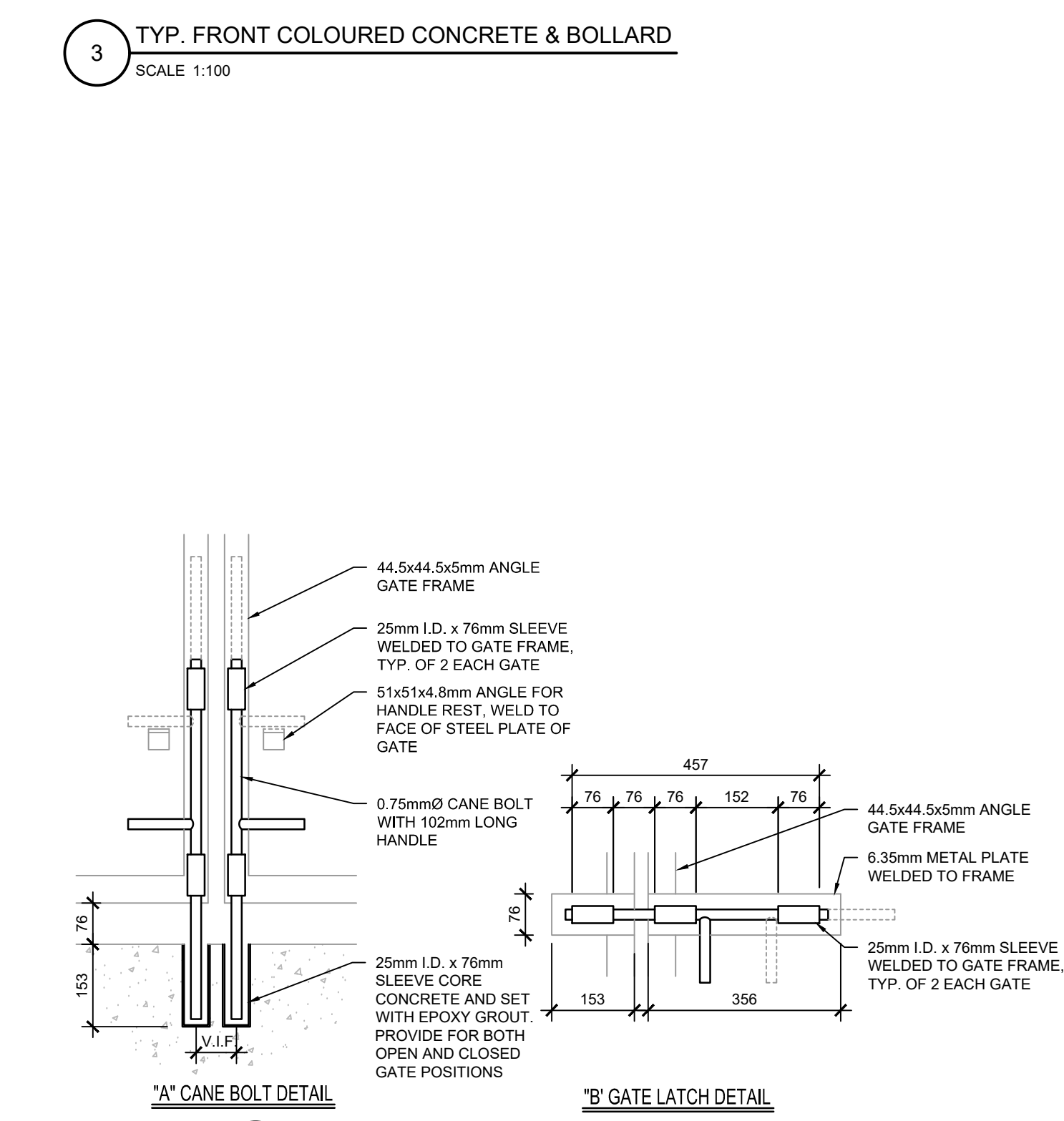
6 TRASH ENCLOSURE PLAN  
SCALE 1:50



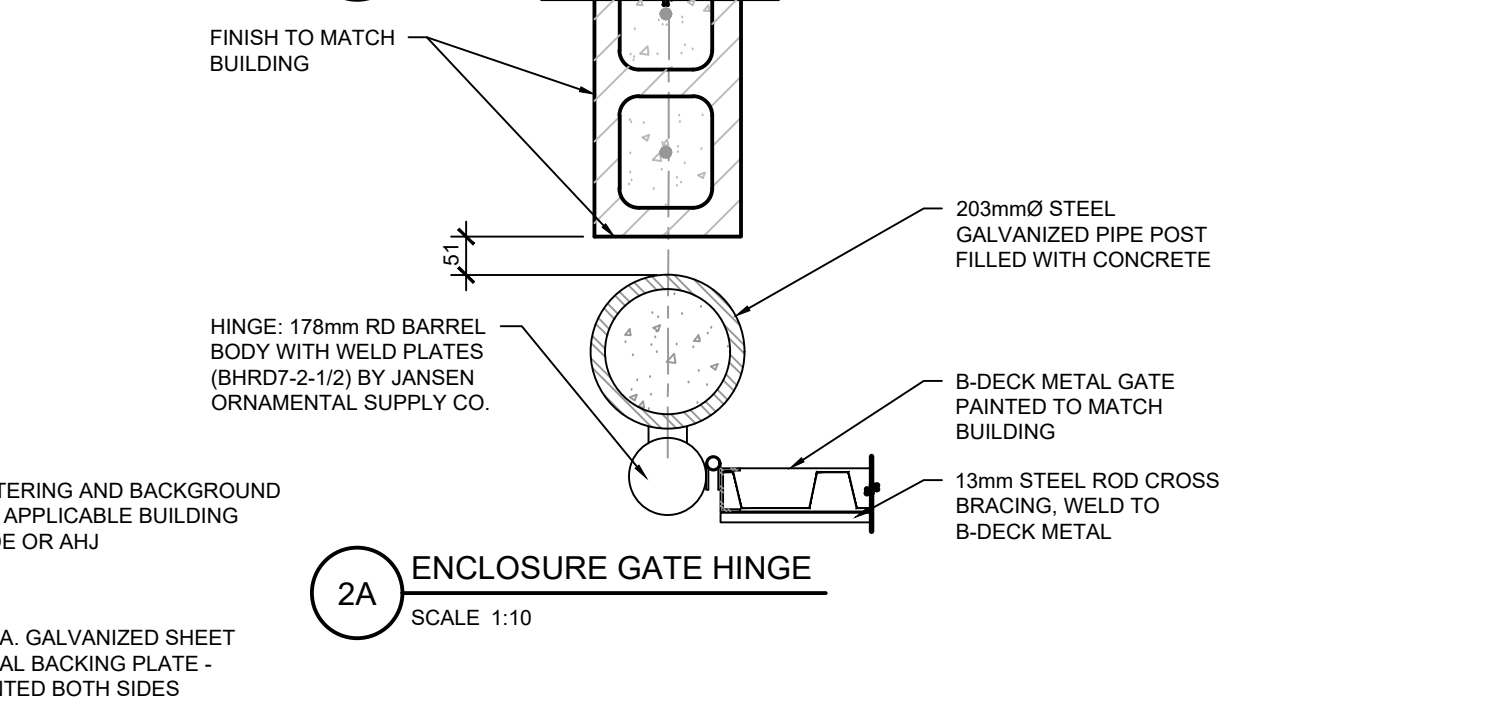
7 TRASH ENCLOSURE GATE ELEVATION  
SCALE 1:25



3 TYP. FRONT COLOURED CONCRETE & BOLLARD  
SCALE 1:100

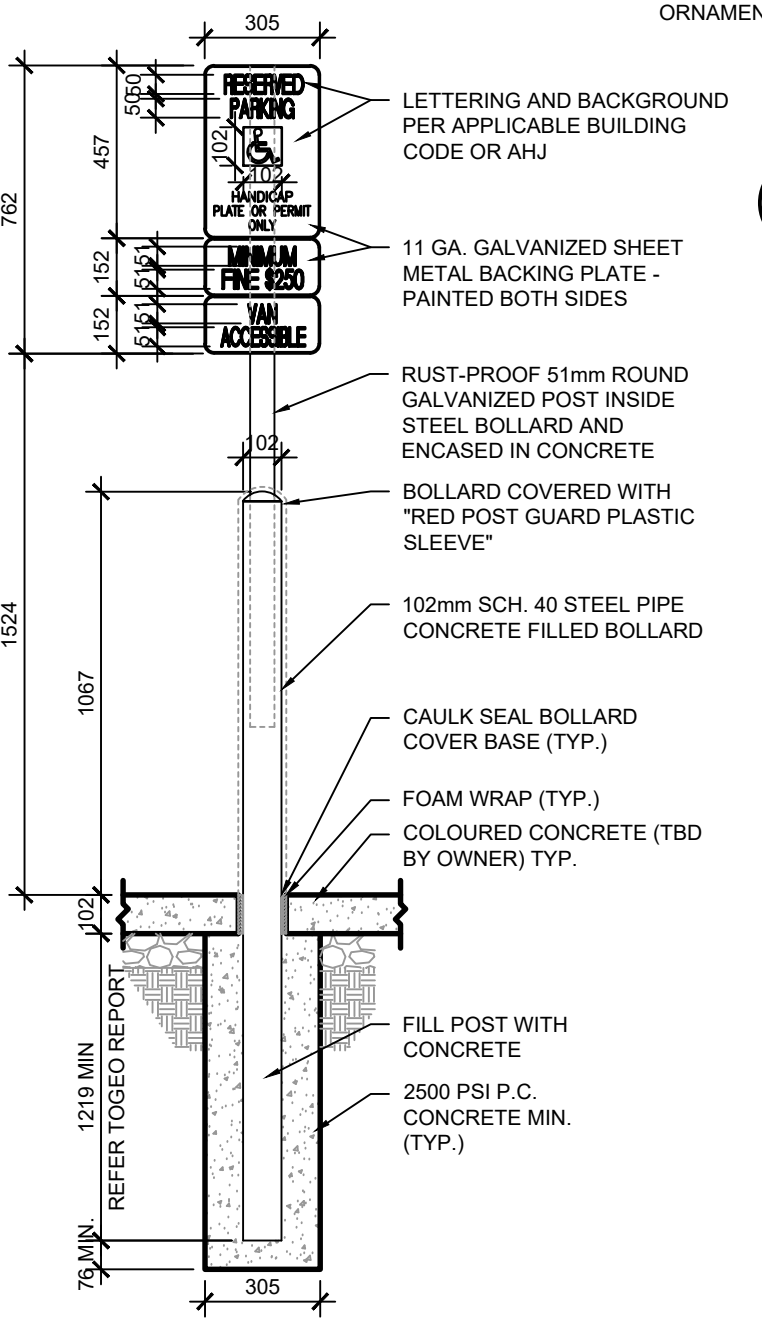


2A ENCLOSURE GATE HINGE  
SCALE 1:10

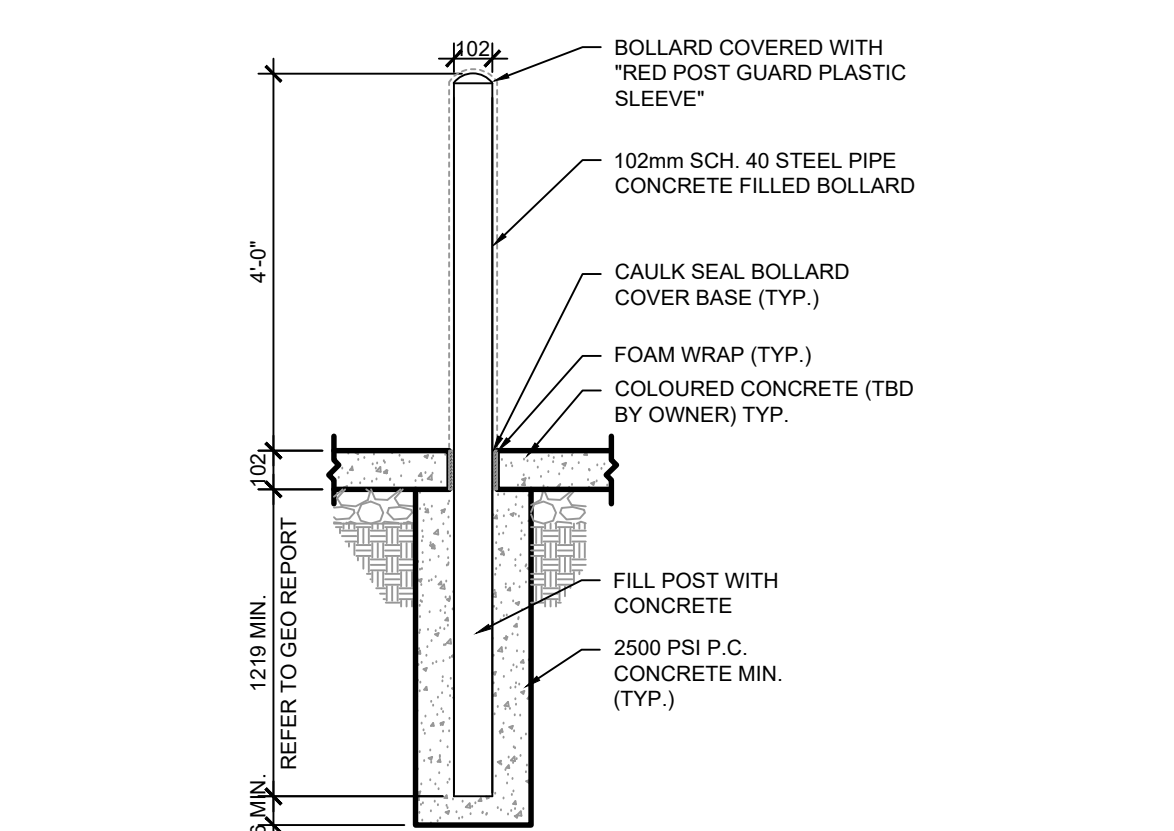


2B CANE BOLT DETAILS  
SCALE 1:10

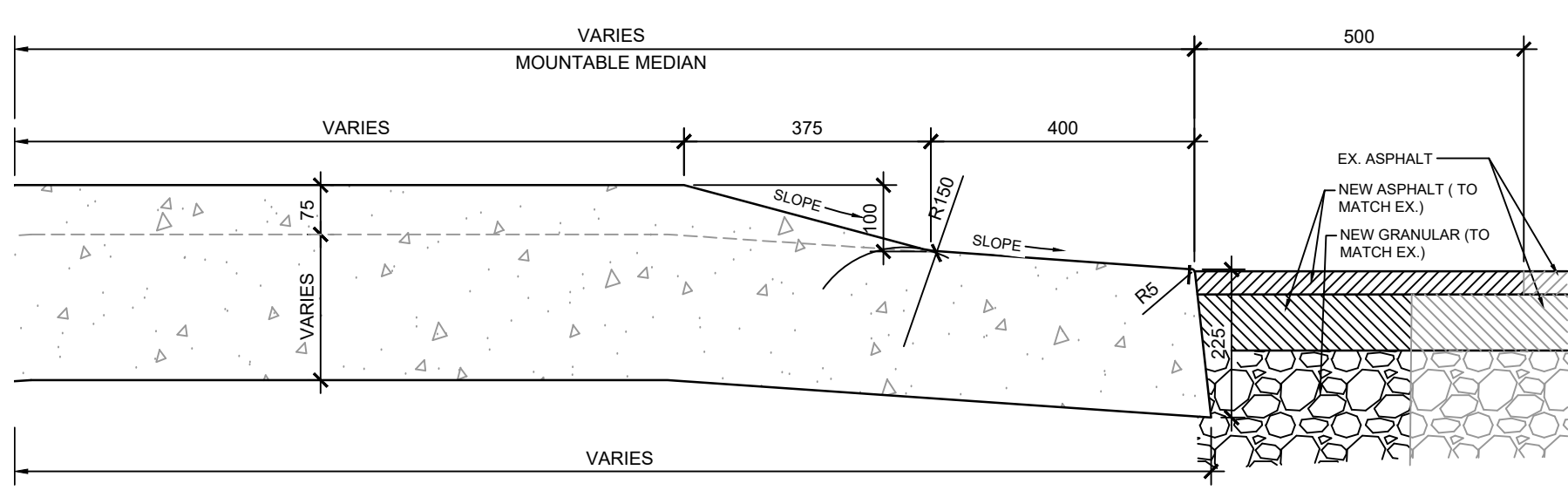
NOTES:  
 SIGNS SHALL BE MOUNTED TO POST WITH GALVANIZED OR CADMIUM PLATE 8mm Ø STEEL BOLTS, NUTS AND WASHERS. CONTRACTOR SHALL SUPPLY AND INSTALL 8mm NYLON WASHERS BETWEEN BOLT HEADS AND SIGN FACE TO PROTECT FINISH



4 ACCESSIBLE SIGN  
SCALE 1:20



1 BOLLARD  
SCALE 1:20



A MEDIAN SECTION  
SUPER-ELEVATED OPSD 600 030  
SCALE 1:100

No.	REVISIONS	Date	By	App.
B	REISSUED FOR SPA	SEP. 25 2021	C.F.	C.F.
A	ISSUED FOR SPA	APR 27 2021	C.F.	C.F.

PROFESSIONAL ENGINEER  
 S. P. G. WING  
 109911802  
 PROVINCE OF ONTARIO

exp Services Inc.  
 1-1-905.793.0800 | 1-1-905.793.0641  
 1595 Clark Boulevard  
 Brampton, ON L6T 4V1  
 Canada  
 www.exp.com

exp.

- BUILDINGS • EARTH & ENVIRONMENT • ENERGY •
- INDUSTRIAL • INFRASTRUCTURE • SUSTAINABILITY •

Owner/Cliet:

**CIRCLE K**

Location:  
 1545 WOODROFFE AVE.  
 OTTAWA, ON

Title:  
 SITE DETAILS

Designed By:	AS NOTED	Drawn By:	T.M.	Checked By:	C.F.
Scale:	AS NOTED	Date:	MARCH 2021	City Drawing No.:	
Project No.:	BRM00606364-B0	Drawing No.:		SD1.2	

CITY DWG. # 17094