

COPYRIGHT NOTICE

This drawing is the property of the above referenced Professional and is not to be used for any purpose other than the specific project and site named herein, and cannot be reproduced in any manner without the express written permission from the Professional.

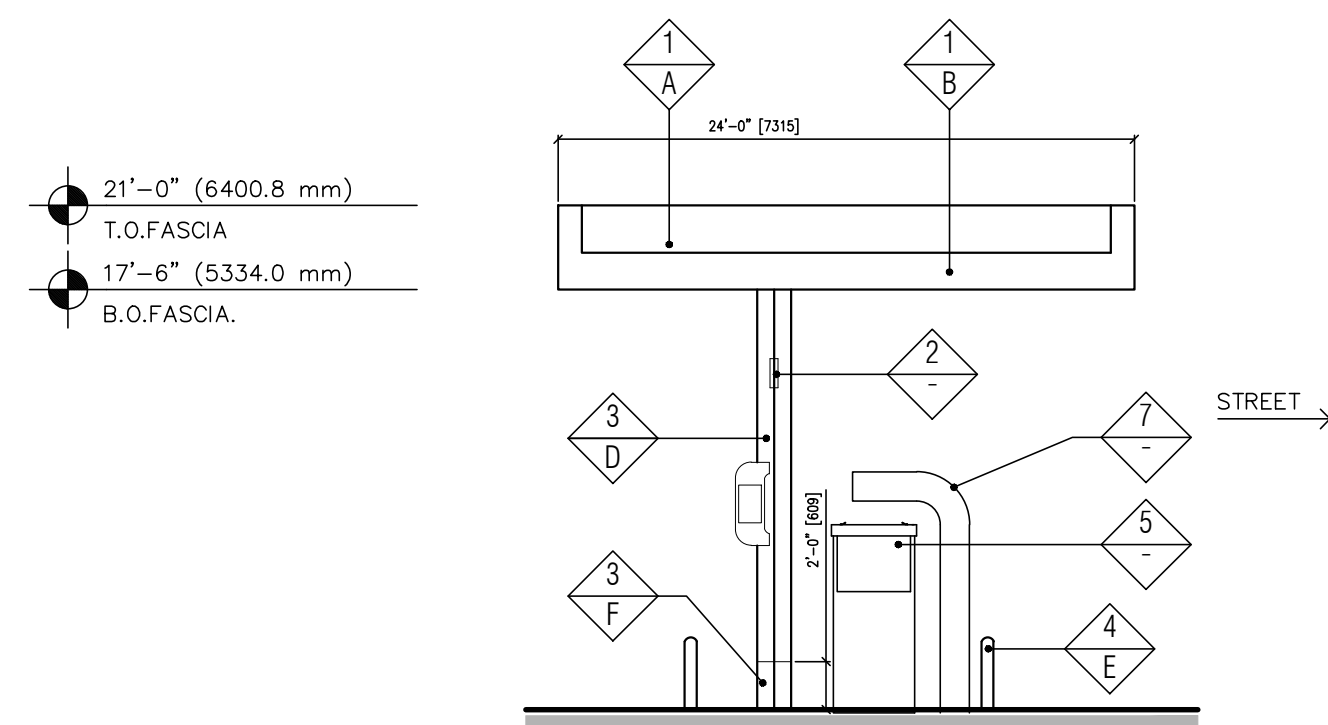
09/24/21 ISSUED FOR SPA

FINISH SCHEDULE

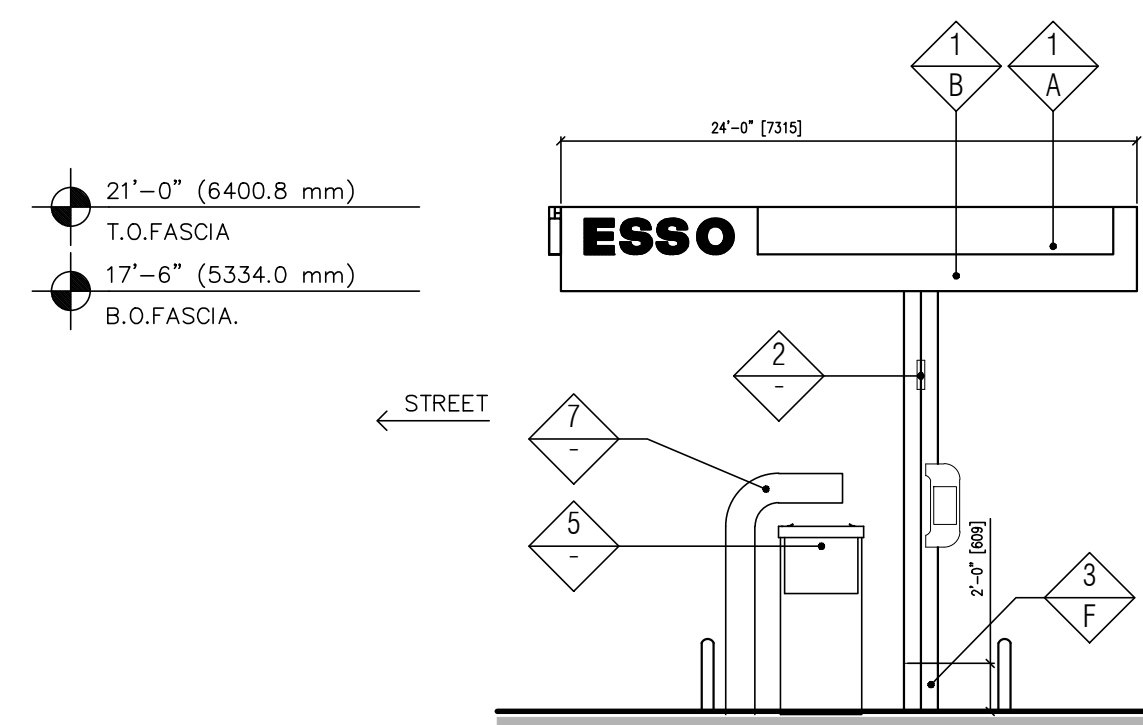
FINISH MATERIAL	
1	ACM PANEL "TEX-COTE"
2	COLUMN FLAGS BY SIGNAGE VENDOR, ESSO "SYNERGY" BRANDING
3	STEEL COLUMN WITH PAINT FINISH
4	6" Ø BOLLARD, 36" HIGH
5	FUEL PUMP
6	INTERNALLY ILLUMINATED SIGN UNDER SEPARATE PERMIT
7	ILLUMINATED WAVE SIGNAGE, ESSO "SYNERGY" BRANDING
FINISH COLOR	
A	ESSO RED
B	ESSO WHITE
C	NOT USED
D	RAL9016 SHELL WARM WHITE
E	PVC BOLLARD SLEEVE "DARK GRAY"
F	SHERWIN WILLIAMS - SW6236 - GRAYS HARBOR

NOTES:

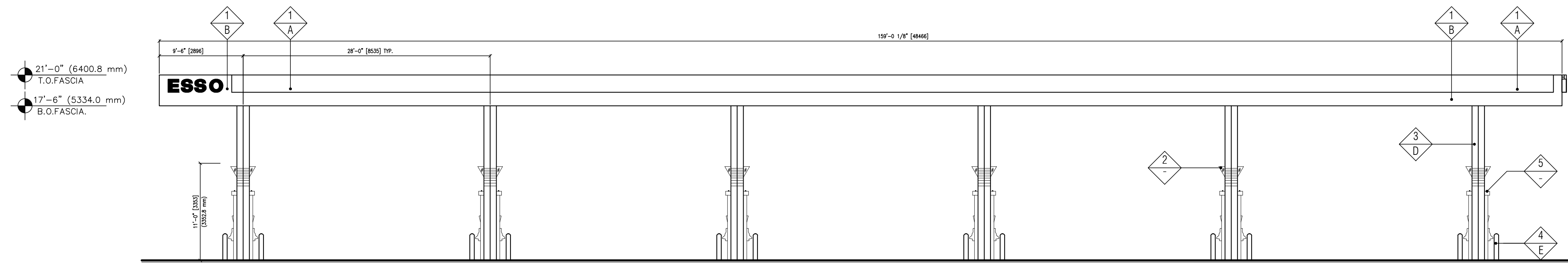
1. THE FASCIA PANELS ARE PRE-FINISHED BY SIGNAGE VENDOR
2. ALL SIGNS REQUIRE A SEPARATE SUBMITTAL
3. ALL LIGHTING ON CANOPY TO BE FLUSH MOUNTED WITH FASCIA. SEE ELECTRICAL



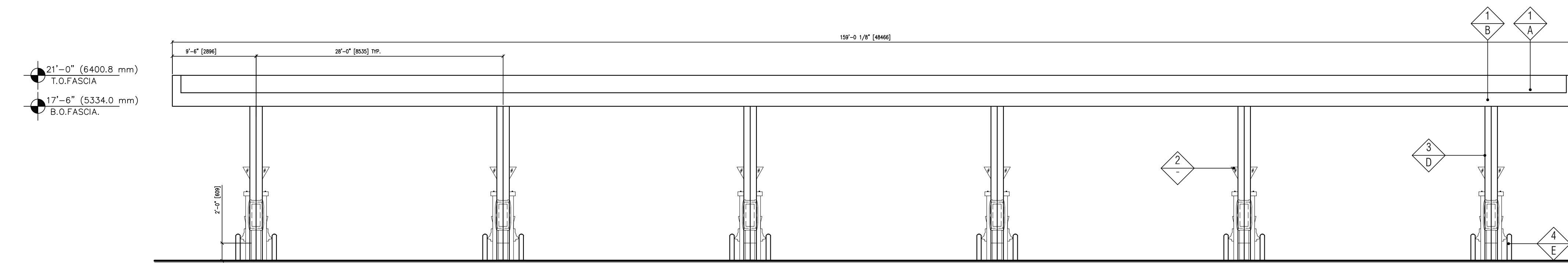
1 "SIDE" (WEST) ELEVATION
SCALE: 1/8" = 1'-0"



2 "SIDE" (EAST) ELEVATION
SCALE: 1/8" = 1'-0"



3 "FRONT" (SOUTH) ELEVATION
SCALE: 1/8" = 1'-0"



4 "BACK" (NORTH) ELEVATION
SCALE: 1/8" = 1'-0"

PROFESSIONAL SEAL

FOR REVIEW
NOT FOR CONSTRUCTION

PROFESSIONAL IN CHARGE

S. CHERIAN

PROJECT MANAGER

S. LAWRENCE

QUALITY CONTROL

O. KARIMZODA

DRAWN BY

O. KARIMZODA

PROJECT NAME

**CIRCLE K
STORES INC.
R&R No. 52287**

**NEPEAN
ONTARIO**

**1545 WOODROFFE AVENUE
NEPEAN, ON, CANADA
K2G 1W2**



CIRCLE K STORES INC.

PROJECT NUMBER

BE20207036

SHEET TITLE

**ARCHITECTURAL
FUEL PUMP
CANOPY
ELEVATIONS**

SHEET NUMBER

CA-2

D07-12-21-0056