

FORUM/SLP 112 NELSON LIMITED PARTNERSHIP

**9-STOREY RESIDENTIAL DEVELOPMENT, 112
NELSON STREET, OTTAWA, ON
SITE SERVICING REPORT**

AUGUST 26, 2021





**9-STOREY RESIDENTIAL
DEVELOPMENT, 112 NELSON
STREET, OTTAWA, ON
SITE SERVICING REPORT**

FORUM/SLP 112 NELSON LIMITED PARTNERSHIP

FOR SITE PLAN APPROVAL

PROJECT NO.: 211-04788-00
DATE: AUGUST 2021

WSP
2611 QUEENSVIEW DRIVE, SUITE 300
OTTAWA, ON, CANADA, K2B 8K2

WSP.COM



August 26, 2021

Forum/SLP 112 Nelson Limited Partnership
226 Argyle Avenue
Ottawa, ON K2P 1B9

Attention: Rakan Abushaar

Dear Sir:

Subject: 112 Nelson Street, Ottawa, ON – Site Servicing and Stormwater Management Report

Please find attached our site servicing report issued for site plan approval application.





Yours sincerely,

A handwritten signature in blue ink, appearing to read 'Smc', with a long, sweeping flourish extending upwards and to the right.

Stephen McCaughey, P.Eng.
Project Engineer

WSP ref.: 211-04788-00

QUALITY MANAGEMENT

| ISSUE/REVISION | FIRST ISSUE | REVISION 1 | REVISION 2 | REVISION 3 |
|----------------|--|--|------------|------------|
| Remarks | Issued for Site Plan Approval Application | Reissued for Site Plan Approval Application | | |
| Date | 2021-07-26 | 2021-08-26 | | |
| Prepared by | Erin Blanchette | Erin Blanchette | | |
| Signature |  |  | | |
| Checked by | Stephen McCaughey, P.Eng. | Stephen McCaughey, P.Eng. | | |
| Signature |  |  | | |
| Authorised by | | | | |
| Signature | | | | |
| Project number | 211-04788-00 | | | |
| Report number | | | | |
| File reference | | | | |

SIGNATURES

PREPARED BY



Erin Blanchette, EIT
Junior Project Engineer

REVIEWED BY



Stephen McCaughey, P.Eng.
Project Engineer

This report was prepared by WSP Canada Inc. for the account of Forum/SLP 112 Nelson Limited Partnership, in accordance with the professional services agreement. The disclosure of any information contained in this report is the sole responsibility of the intended recipient. The material in it reflects WSP Canada Inc.'s best judgement in light of the information available to it at the time of preparation. Any use which a third party makes of this report, or any reliance on or decisions to be made based on it, are the responsibility of such third parties. WSP Canada Inc. accepts no responsibility for damages, if any, suffered by any third party as a result of decisions made or actions based on this report. This limitations statement is considered part of this report.

The original of the technology-based document sent herewith has been authenticated and will be retained by WSP for a minimum of ten years. Since the file transmitted is now out of WSP's control and its integrity can no longer be ensured, no guarantee may be given with regards to any modifications made to this document.

TABLE OF CONTENTS

| | | |
|----------|--|----------|
| 1 | INTRODUCTION | 1 |
| 1.1 | Executive Summary | 1 |
| 1.2 | Location Map and Plan | 2 |
| 1.3 | Higher Level Studies..... | 2 |
| 1.4 | Available Existing and Proposed Infrastructure..... | 2 |
| 1.5 | Geotechnical Study | 3 |
| 2 | WATER DISTRIBUTION | 4 |
| 2.1 | System Constraints and Boundary Conditions | 4 |
| 2.2 | Confirmation of Adequate Domestic Supply and Pressure..... | 4 |
| 2.3 | Confirmation of Adequate Fire Flow Protection | 5 |
| 3 | WASTEWATER DISPOSAL..... | 6 |
| 3.1 | Design Criteria..... | 6 |
| 3.2 | Calculations for Sanitary Demand..... | 6 |
| 3.3 | Verification of Available Capacity in Existing Sewer | 6 |
| 4 | SITE STORM SERVICING..... | 7 |
| 4.1 | Existing Condition..... | 7 |
| 4.2 | Drainage Drawings | 7 |
| 4.3 | Water Quantity Control Objective..... | 7 |
| 4.4 | Water Quality Control Objective | 7 |
| 4.5 | Proposed Minor System | 7 |
| 4.6 | Proposed Major System..... | 7 |
| 5 | SEDIMENT AND EROSION CONTROL | 8 |
| 5.1 | General | 8 |



| | | |
|------------|--|-----------|
| 6 | APPROVAL AND PERMIT REQUIREMENTS | 10 |
| 6.1 | General | 10 |
| 7 | CONCLUSION CHECKLIST | 11 |
| 7.1 | Conclusions and Recommendations..... | 11 |
| 7.2 | Comments Received from Review Agencies..... | 11 |

TABLES

| | | |
|------------|--|---|
| TABLE 2-1: | BOUNDARY CONDITIONS (CITY OF OTTAWA)..... | 4 |
| TABLE 2-2: | SUMMARY OF WATER PRESSURE FROM EPANET RESULTS..... | 5 |

FIGURES

| | | |
|------------|--------------------|---|
| FIGURE 1-1 | SITE LOCATION..... | 2 |
|------------|--------------------|---|

APPENDICES

| | |
|----------|--------------------------|
| A | WATER DEMAND |
| B | SANITARY DEMAND |
| C | SITE DRAWINGS |
| D | STORM SEWER DESIGN SHEET |
| E | CORRESPONDENCES |

1 INTRODUCTION

1.1 EXECUTIVE SUMMARY

WSP was retained by Forum/SLP 112 Nelson Limited Partnership to provide servicing, grading and stormwater management design services in support of the site plan approval for the proposed residential development located at 112 Nelson Street, in the City of Ottawa. The proposed work consists of a 9-storey residential development tower with lower 6 storey components at the ends of the “L” shaped building. This report will provide sufficient detail to demonstrate that the proposed development can be supported by the existing municipal infrastructure services (watermain, sanitary and storm sewers) and that the servicing design conforms to the applicable standards and guidelines. The report will also include measures to be taken during the construction to minimize erosion and sedimentation. A separate report (112 Nelson St. – Stormwater Management Report) is provided detailing the stormwater management approach and addressing the quantity control and quality measures in accordance with the applicable guidelines.

Currently, the site is developed and houses a 2 to 3 storey industrial building with several units. The total property area is 0.3 ha in size. The site sits south-east of the King Edward Ave. and Rideau St. intersection and is bounded by developed land and parking facilities with Nelson St. to the east of the site.

The subject site is a single L-shaped property with easements identified in the topographic survey. The site generally slopes inwards towards catch basins with high points along the property lines. The site is currently serviced for water (including a private hydrant), sanitary, and storm, and these existing on-site services will be demolished for the proposed works.

The City of Ottawa requires that the design of a drainage and stormwater management system in this development must be prepared in accordance with the following documents:

- Sewer Design Guidelines, City of Ottawa, October 2012;
- Stormwater Management Planning and Design Manual, Ministry of the Environment, March 2003; and
- Stormwater Management Facility Design Guidelines, City of Ottawa, April 2012

This report was prepared utilizing servicing design criteria obtained from the City of Ottawa and outlines the design for water, sanitary wastewater and stormwater facilities.

The format of this report matches that of the servicing study checklist found in Section 4 of the City of Ottawa’s Servicing Study Guidelines for Development Applications, November 2009.

The following municipal services are available along Nelson St. adjacent to the development as recorded from as-built drawings received from the City and online resource GeoOttawa:

Nelson St.

- ▶ 203 mm watermain, 300 mm concrete sanitary sewer and 450 mm concrete stormwater sewer.

It is proposed that an on-site stormwater management system will be provided to collect and attenuate flow rates and control water quality leaving the site. Refer to stormwater management report for details.

1.2 LOCATION MAP AND PLAN

The site at 112 Nelson St. is shown in the centre of Figure 1-1 below as presented in the GeoOttawa website.

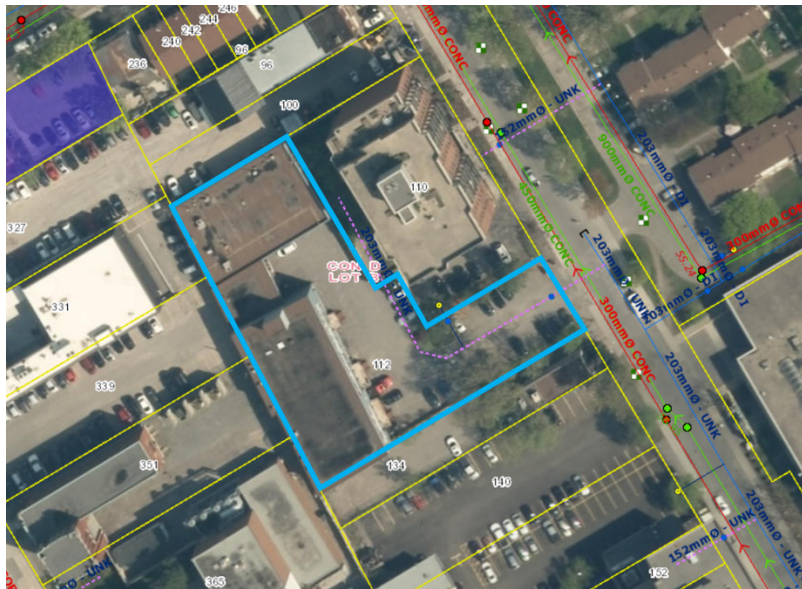


Figure 1-1 Site Location

The proposed development will consist of a 9-storey residential tower which lowers to 6 storeys on the north end, with a below grade parking garage. The building will have a gross floor area of approximately 10,700 m².

1.3 HIGHER LEVEL STUDIES

The review for servicing has been undertaken in conformance with, and utilizing information from, the following documents:

- Ottawa Sewer Design Guidelines, Second Edition, Document SDG002, October 2012, City of Ottawa including all amendments issued as part of Technical Bulletins.
- Ottawa Design Guidelines – Water Distribution, July 2010 (WDG001), including all amendments issued as part of Technical Bulletins.
- Stormwater Management Planning and Design Manual, Ontario Ministry of the Environment and Climate Change, March 2003 (SMPDM).
- Design Guidelines for Drinking-Water Systems, Ontario Ministry of the Environment and Climate Change, 2008 (GDWS).
- Fire Underwriters Survey, Water Supply for Public Fire Protection (FUS), 1999.

1.4 AVAILABLE EXISTING AND PROPOSED INFRASTRUCTURE

As described above, all municipal mains (sanitary, storm and watermain) are available and located along Nelson Street. Valved water servicing will be provided as well as sanitary servicing with monitoring hole at or near the property line. Quantity and quality control is required to restrict the stormwater discharge leaving the site, thus the on-site storm runoff will be captured, detention storage provided, flow release restricted, treated for quality control requirements, and finally directed towards the existing storm sewer on Nelson street.

1.5 GEOTECHNICAL STUDY

Paterson Group provided a draft geotechnical investigation report of the subject property dated March 2021. Based on the report, groundwater was measured between 4.5-6.1 m below grade. The recommendations of the report have been taken into account for this design development.

2 WATER DISTRIBUTION

2.1 SYSTEM CONSTRAINTS AND BOUNDARY CONDITIONS

Boundary conditions have been provided by the City of Ottawa at the existing connection along the Nelson St. 203mm watermain (Zone 1W).

Table 2-1: Boundary Conditions (City of Ottawa)

| Scenario | Nelson St. Connection |
|-----------------------|-----------------------|
| Average Day (MAX HGL) | 115.0m |
| Peak Hour (MIN HGL) | 106.5m |
| Max Day + Fire Flow | 98.8m |

2.2 CONFIRMATION OF ADEQUATE DOMESTIC SUPPLY AND PRESSURE

Water demands are based on Table 4.2 of the Ottawa Design Guidelines – Water Distribution for these residential demands based on the number of apartment units. For purpose of verification of supply. A water demand calculation sheet is included in Appendix A, and the total water demands are summarized as follows:

| | |
|-------------|------------|
| | 112 Nelson |
| Average Day | 1.64 L/s |
| Maximum Day | 4.09 L/s |
| Peak Hour | 9.00 L/s |

Since the average day demand is greater than 50,000 L/d (0.58 L/s), twin 150mm services will be provided from Nelson St. to the building, as shown in the site servicing drawing in Appendix C.

The pressure criteria identified in the guidelines are as follows:

| | |
|------------------|--|
| Minimum Pressure | Minimum system pressure under peak hour demand conditions shall not be less than 276 kPa (40 psi) |
| Fire Flow | During the period of maximum day demand, the system pressure shall not be less than 140 kPa (20 psi) during a fire flow event. |
| Maximum Pressure | Maximum pressure at any point the distribution system shall not exceed 689 kPa (100 psi). In accordance with the Ontario Building/Plumbing Code, the maximum pressure should not exceed 552 kPa (80 psi). Pressure reduction controls may be required for buildings where it is not possible/feasible to maintain the system pressure below 552 kPa. |

The site has been analyzed as summarized below and in Table 2-2 to ensure all the City of Ottawa minimum criteria for water pressures are met for the two conditions (maximum day + fire flow and peak hour). The analysis was carried out using EPANET, hydraulic and water quality analysis based on the boundary conditions provided by the City of Ottawa. The detailed EPANET output results are also included in the Appendix A.

With respect to a average day demand of 1.64 L/s, the model indicated that due to higher watermain pressures the service connection at the building will need to be controlled with a pressure control valve.

With respect to a peak hour demand of 9.00 L/s, the model indicated that the pressure drop in the pipe was also acceptable and within the City of Ottawa’s minimum pressure requirements.

With respect to a max day + fire flow of 204.09 L/s, the model indicated that the pressure drop in the pipe was acceptable and within the City of Ottawa’s minimum pressure requirements. Section 2.3 following details the fire flow estimation.

Refer to Appendix A for the detailed water distribution analysis output.

Table 2-2: Summary of Water Pressure from EPANET results

| Scenario | Pressure at Building Connection | |
|-----------------------|---------------------------------|-------|
| | (psi) | (kPa) |
| Max Day + Fire Flow | 53 | 370 |
| Peak Hour (MIN HGL) | 72 | 500 |
| Average Day (Max HGL) | 84 | 580 |

2.3 CONFIRMATION OF ADEQUATE FIRE FLOW PROTECTION

The fire flow rate has been calculated using the Fire Underwriters Survey (FUS) method. The method takes into account the type of building construction, the building occupancy, the use of sprinklers and the exposures to adjacent structures. For fire resistive construction with a full sprinkler system only the first four largest floors are taken into account, leading to the calculated fire flow demand of 12,000 L/min (200 L/s). A copy of the FUS calculations are included in Appendix A.

The maximum fire demand of 12,000 L/min can be delivered through the proposed twin 150mm services. The existing site hydrant will be replaced and relocated to be within 45m of the building fire department connections by the front entrance.

The boundary condition for Maximum Day and Fire Flow results in a pressure of 370 kPa at the building. In the guidelines, a minimum residual pressure of 140 kPa must be maintained in the distribution system for a fire flow and maximum day event; therefore, the fire flow requirement is met.

3 WASTEWATER DISPOSAL

3.1 DESIGN CRITERIA

In accordance with the City of Ottawa's Sewer Design Guidelines, the following design criteria have been utilized in order to estimate wastewater flows generated by the subject site and verify existing capacity;

- Average sanitary flow for residential use 280 L/c/d
 - Infiltration & Foundation Allowance (Total) 0.33 L/ha/s
-

3.2 CALCULATIONS FOR SANITARY DEMAND

The criteria to determine anticipated peak flow based on site used as described in Ottawa Sewer Design Guidelines Appendix 4-A are as follows, refer to Appendix B for detailed calculation.

| | Total |
|----------------|-----------------|
| Average Day | 1.64 L/s |
| Peak | 5.53 L/s |
| Extraneous Day | 0.10 L/s |
| Total | 5.63 L/s |

3.3 VERIFICATION OF AVAILABLE CAPACITY IN EXISTING SEWER

The sanitary demand will be serviced by a 150mm sewer with a minimum slope of 1% to the 300mm sewer on Nelson Street. A Sanitary Sewer Design Sheet is provided in Appendix B confirming capacity and minimum scouring velocity is achieved. Per communication with the City provided in Appendix E, the existing downstream sewer capacity cannot be confirmed until the application is submitted.

4 SITE STORM SERVICING

4.1 EXISTING CONDITION

The site sits south-east of the King Edward Ave. and Rideau St. intersection and is bounded by developed land and parking facilities with Nelson St. to the east of the site. The site is currently developed and houses a 2-3 storey industrial building with several units. The site contains some storm infrastructure (pipes, maintenance holes, catch basins) that will be removed/abandoned as part of the development. Most runoff from the subject site is ultimately directed to 450 mm diameter storm sewer, which runs south to north along Nelson Street.

4.2 DRAINAGE DRAWINGS

Site drawings are included in Appendix C including servicing, grading, drainage area, and erosion and sediment control.

4.3 WATER QUANTITY CONTROL OBJECTIVE

Refer to the Stormwater Management Report for the water quantity objective for the site.

4.4 WATER QUALITY CONTROL OBJECTIVE

Refer to the Stormwater Management Report for the water quality objective for the site.

4.5 PROPOSED MINOR SYSTEM

The development will be serviced by 250 mm storm service connection with a proposed maintenance hole on the existing 450 mm storm sewer on Nelson Street. As described in the Stormwater Management Report, runoff from the new development area of the site will be collected by a network of roof and surface inlets (deck drains above the underground parking lot) and storm sewers that will be directed to the underground cistern located within the building footprint on the east side of the building. A flow restrictor will reduce post-development flows to the allowable rate. The sewer design sheet for the site storm system is provided in Appendix D.

4.6 PROPOSED MAJOR SYSTEM

For the overall small ground-level drainage areas, the major overland flow routes lead out to adjacent properties 331 King Edward Avenue for the north-west area, 100 Nelson St. for the north-east area, 134 Nelson St. for the south area and Nelson Street for the east section, with the overflow elevations at minimum 300mm below the building entrances. Additionally, the spillover points are less than 300mm from the surface inlet elevation so there will be no ponding greater than 300mm even in cases of blockage. The storm sewers are sized such that no ponding will occur during the 2-year. Due to the small drainage areas at-grade no ponding is expected during the 100-year nor 100-year + 20% stress test. The storm sewer design sheets are provided in Appendix D.

5 SEDIMENT AND EROSION CONTROL

5.1 GENERAL

Prior to topsoil stripping, earthworks or underground construction, erosion and sediment controls will be implemented and will be maintained throughout construction. Silt fences will be installed around the perimeter of the site and will be cleaned and maintained throughout construction. Silt fences will remain in place until the working areas have been stabilized or re-vegetated. Catch basins and manholes will have filter fabric installed under the grate during construction to protect from silt entering the storm sewer system. A mud mat will be installed at the construction access to reduce risk of mud tracking onto adjacent roads.

Erosion and sediment controls must be in place during construction. Recommendations to the contractor will be included in the erosion and sediment control plan in Appendix C and are summarized below:

During all construction activities, erosion and sedimentation shall be controlled by the following techniques:

Prior to start of construction:

- ▶ Install silt fence along the perimeter of the property line.
- ▶ Install mud mat (gravel mat on geotextile) at construction site entrance to reduce mud tracking from site onto road.
- ▶ Install filter fabric or silt sack filters in all the catchbasins and manholes that capture runoff from the construction area.

During construction:

- ▶ Minimize the extent of disturbed areas and the duration of exposure and impacts to existing grading.
- ▶ Perimeter vegetation to remain in place until permanent storm water management is in place otherwise, immediately install silt fence when the existing site is disturbed at the perimeter.
- ▶ Protect disturbed areas from overland flow by providing temporary swales to the satisfaction of the field engineer. Tie-in temporary swale to existing catchbasins as required.
- ▶ During demolition of existing on-site storm infrastructure, protect downstream sewers from unfiltered flow.
- ▶ Provide temporary cover such as seeding or mulching if disturbed area will not be rehabilitated within 30 days.
- ▶ Inspect silt fences, filter fabric filters and catch basin sumps weekly and within 24 hours after a storm event. Clean and repair when necessary.
- ▶ Drawing to be reviewed and revised as required during construction.
- ▶ Erosion control fencing to be also installed around the base of all stockpiles.
- ▶ Do not locate topsoil piles and excavation material closer than 2.5m from any paved surface, or one which is to be paved before the pile is removed. All topsoil piles are to be seeded if they are to remain on site long enough for seeds to grow (longer than 30 days).
- ▶ Control dust blown off-site by seeding topsoil piles and other areas temporarily (provide watering as required and to the satisfaction of the engineer).
- ▶ No alternate methods of erosion protection shall be permitted unless approved by the field engineer.

- ▶ City roadway and sidewalk to be cleaned of all sediment from vehicular tracking as required.
- ▶ During wet conditions, tires of all vehicles/equipment leaving the site are to be scrapped.
- ▶ Any mud/material tracked onto the road shall be removed immediately by hand or rubber tire loader.
- ▶ Take all necessary steps to prevent building material, construction debris or waste being spilled or tracked onto abutting properties or public streets during construction and proceed immediately to clean up any areas so affected.
- ▶ All erosion control structure to remain in place until all disturbed ground surfaces have been stabilized either by paving or restoration of vegetative ground cover.
- ▶ During the course of construction, if the engineer believes that additional prevention methods are required to control erosion and sedimentation, the contractor will install additional silt fences or other methods as required to the satisfaction of the engineer.
- ▶ The contractor shall implement best management practices, to provide for protection of the area drainage system and the receiving watercourse, during construction activities. The contractor acknowledges that failure to implement appropriate erosion and sediment control measures may be subject to penalties imposed by any applicable regulatory agency.

6 APPROVAL AND PERMIT REQUIREMENTS

6.1 GENERAL

The proposed development is subject to City of Ottawa site plan approval and criteria from the Rideau Valley Conservation Authority.

No other permits or approvals are anticipated to be required from the Ontario Ministry of the Environment, Conservation and Parks (MECP), Ontario Ministry of Transportation, National Capital Commission, Parks Canada, Public Works and Government Services Canada, or any other provincial or federal regulatory agency except those noted above.

7 CONCLUSION CHECKLIST

7.1 CONCLUSIONS AND RECOMMENDATIONS

It is concluded that the proposed development can meet all provided servicing constraints and associated requirements, with the City to confirm the sanitary sewer capacity upon receipt of this submission. It is recommended that this report be submitted to the City of Ottawa in support of the application for site plan approval.

7.2 COMMENTS RECEIVED FROM REVIEW AGENCIES

Minutes from a pre-consultation meeting held with the City of Ottawa are provided in Appendix E.

A WATER DEMAND

WATER DISTRIBUTION - PROPOSED DOMESTIC DEMANDS

| Demand Type | Amount | Units |
|-----------------------------|---------|-----------------|
| Average Day Demand | | |
| Residential | = 280 | L/c/d |
| Light Industrial | = 35000 | L/gross ha/d |
| Heavy Industrial | = 55000 | L/gross ha/d |
| Shopping Centres | = 2500 | L/(1000m2/d) |
| Hospitals | = 900 | L/(bed/d) |
| Schools | = 70 | L/(Students/d) |
| Trailer Parks no Hook-Ups | = 340 | L/(space/d) |
| Trailer Parks with Hook-Ups | = 800 | L/(space/d) |
| Campgrounds | = 225 | L/(campsite/d) |
| Mobile Home Parks | = 1000 | L/(Space/d) |
| Motels | = 150 | L/(bed-space/d) |
| Hotels | = 225 | L/(bed-space/d) |
| Tourist Commercial | = 28000 | L/gross ha/d |
| Other Commercial | = 28000 | L/gross ha/d |

| Maximum Daily Demand: | | | |
|------------------------------|---|-------------------|--------------|
| Residential | = | 2.5 x average day | L/c/d |
| Industrial | = | 1.5 x average day | L/gross ha/d |
| Commercial | = | 1.5 x average day | L/gross ha/d |
| Institutional | = | 1.5 x average day | L/gross ha/d |

| Maximum Hour Demand: | | | |
|-----------------------------|---|-------------------|--------------|
| Residential | = | 2.2 x maximum day | L/c/d |
| Industrial | = | 1.8 x maximum day | L/gross ha/d |
| Commercial | = | 1.8 x maximum day | L/gross ha/d |
| Institutional | = | 1.8 x maximum day | L/gross ha/d |

| Unit Type | Person / Unit |
|--------------------------|---------------|
| Single Family | 3.4 |
| Semi-detached | 2.7 |
| Duplex | 2.3 |
| Townhouse (row) | 2.7 |
| Apartments: | |
| Bachelor | 1.4 |
| 1 Bedroom | 1.4 |
| 2 Bedroom | 2.1 |
| 3 Bedroom | 3.1 |
| Average Apt. | 1.8 |
| 112 Nelson Units: | |
| Micro Bachelor | 1.4 |
| Toronto Studio | 1.4 |
| One Bedroom | 1.4 |
| Three Bedroom | 3.1 |

| Population Calculator | 112 Nelson Count |
|-------------------------|------------------|
| Micro Bachelor | 85 |
| Toronto Studio | 197 |
| One Bedroom | 8 |
| Three Bedroom | 32 |
| Total Population | 505.2 |

| 112 Nelson | | |
|-----------------------------|------------------------------|------------|
| Demand Type | = Residential | |
| Average Day Demand | = 280 | L/c/d |
| Population | = 505 | |
| | = 280 x 505 | |
| | = 141,456 | L/day |
| Average Daily Flow | = 1.64 | L/s |
| Daily Demand Type | = Residential | |
| Max. Daily Factor | = 2.5 | L/c/d |
| | = 2.5 x Average Daily Flow | |
| | = 2.5 x 141,456 | |
| | = 353,640 | L/day |
| Maximum Daily Demand | = 4.09 | L/s |
| Hour Demand Type | = Residential | |
| Max. Hour Factor | = 2.2 | L/c/d |
| | = 2.2 x Maximum Daily Demand | |
| | = 2.2 x 353,640 | |
| | = 778,008 | L/day |
| Maximum Hour Demand | = 9.00 | L/s |

WATER DISTRIBUTION - PROPOSED FIRE FLOW DEMANDS

| |
|----------------------|
| $F = 220 C \sqrt{A}$ |
|----------------------|

| Type of Construction Coefficient: | | Comments |
|-----------------------------------|-----|--|
| Wood Frame | 1.5 | (all structurally combustible) |
| Ordinary | 1.0 | (brick, masonry wall, combustible floor and interior) |
| Non-Combustible | 0.8 | (unprotected metal structural component, masonry or metal walls) |
| Fire Resistive | 0.6 | (fully protected frame, floors and roof) |

| Combustibility: | | |
|---------------------|------|--|
| Non-Combustible | -25% | |
| Limited Combustible | -15% | |
| Combustible | 0% | |
| Free Burning | 15% | |
| Rapid Burning | 25% | |

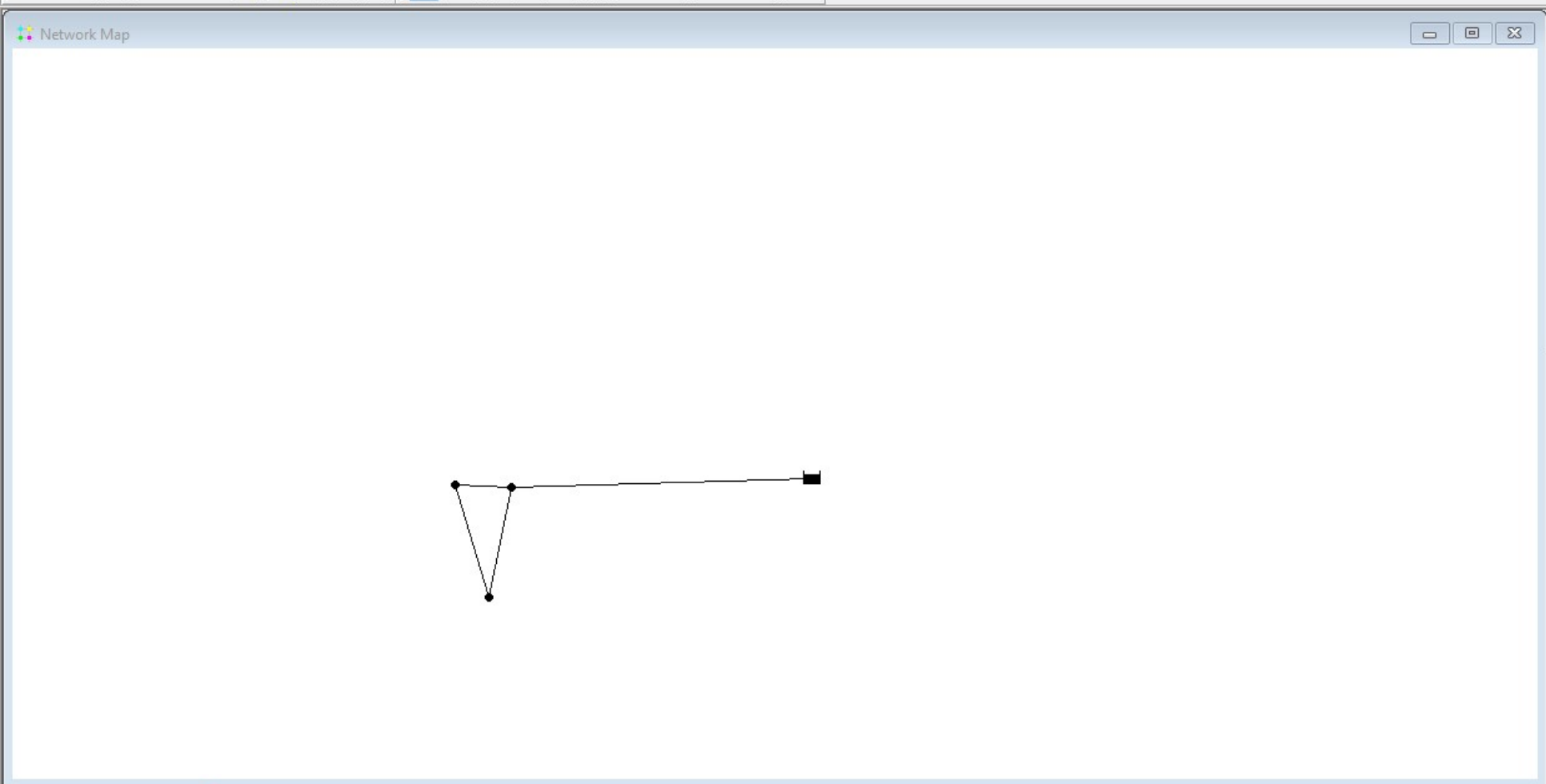
| Sprinkler Protection: | | |
|---|------|-------------------|
| Complete Sprinkler System | -50% | (max.) |
| NFPA 13 Conformed | -30% | (max.) |
| If Water Supply Standard for Both System and Fire Lines | -10% | additional (max.) |
| Fully Supervised System | -10% | additional (max.) |
| None | 0% | |

| | | 112 Nelson | |
|---|---|----------------------|--|
| Type of Construction Coefficient | Fire Resistive | | |
| | | 0.6 | |
| Gross Floor Area (m ²) | | 8,158 m ² | |
| Fire Flow, F | | 11,922 L/min | |
| F(round) | | 12,000 L/min | |
| Modification 1: Occupancy Combustibility | Limited Combustible | | |
| | | -15% | |
| Occupancy Credit | | -1,800 L/min | |
| F(mod1) = F(round) + Occupancy Credit | | 10,200 L/min | |
| Modification 2: Sprinkler Protection | Complete Sprinkler System | | |
| | | -50% | |
| Additional Credit | If Water Supply Standard for Both System and Fire Lines | | |
| | | 0 | |
| Sprinkler Credit | | -5,100 L/min | |
| F(mod2) = F(mod1) + Sprinkler Credit | | 5,100 L/min | |
| Modification 3: Exposure Distances | | | |
| North | 16 m | 15% | |
| South | 5 m | 20% | |
| East | 16 m | 15% | |
| West | 10 m | 20% | |
| | Total % = | 70% | |
| | 10,200 x | 0.70 | |
| Exposure Credit | | 7,140 L/min | |
| F(mod3) = F(mod2) + Exposure Credit | | 12,240 L/min | |
| F(final) = F(mod3) rounded to nearest 1,000L/min | | 12,000 L/min | |
| F(final) | | 200 L/s | |

112 Nelson St., Ottawa

| | 112 Nelson | |
|-----------------------------|------------|-----|
| Average Daily Demand | 1.64 | L/s |
| Maximum Daily Demand | 4.09 | L/s |
| Peak Hour Demand | 9.00 | L/s |
| Fire Flow | 200 | L/s |

Max Day + Fire Flow 204.09 L/s



Browser

Data Map

Pipes

- NelsonWM3
- NelsonWM2
- BldgConnect_2
- BldgConnect_1**

Navigation icons: Home, Close, Refresh

```

*****
*                               E P A N E T                               *
*                               Hydraulic and Water Quality                 *
*                               Analysis for Pipe Networks                   *
*                               Version 2.2                               *
*****
    
```

Input File: 112 Nelson - Model.net

Link - Node Table:

| Link ID | Start Node | End Node | Length m | Diameter mm |
|---------------|---------------|---------------|----------|-------------|
| NelsonWM3 | SiteConnect_1 | SiteConnect_2 | 2 | 203 |
| NelsonWM2 | East | SiteConnect_2 | 10 | 203 |
| BldgConnect_2 | SiteConnect_2 | Bldg | 10 | 150 |
| BldgConnect_1 | SiteConnect_1 | Bldg | 10 | 150 |

Node Results:

| Node ID | Demand LPS | Head m | Pressure m | Quality |
|---------------|------------|--------|------------|----------------|
| SiteConnect_1 | 0.00 | 115.00 | 58.00 | 0.00 |
| SiteConnect_2 | 0.00 | 115.00 | 58.00 | 0.00 |
| Bldg | 1.64 | 115.00 | 59.00 | 0.00 |
| East | -1.64 | 115.00 | 0.00 | 0.00 Reservoir |

Link Results:

| Link ID | Flow LPS | velocityUnit m/s | Headloss m/km | Status |
|---------------|----------|------------------|---------------|--------|
| NelsonWM3 | -0.81 | 0.03 | 0.00 | Open |
| NelsonWM2 | 1.64 | 0.05 | 0.03 | Open |
| BldgConnect_2 | 0.83 | 0.05 | 0.04 | Open |
| BldgConnect_1 | 0.81 | 0.05 | 0.04 | Open |

```
*****
*                               E P A N E T                               *
*                               Hydraulic and Water Quality                 *
*                               Analysis for Pipe Networks                   *
*                               Version 2.2                                 *
*****
```

Input File: 112 Nelson - Model.net

Link - Node Table:

| Link ID | Start Node | End Node | Length m | Diameter mm |
|---------------|---------------|---------------|----------|-------------|
| NelsonWM3 | SiteConnect_1 | SiteConnect_2 | 2 | 203 |
| NelsonWM2 | East | SiteConnect_2 | 10 | 203 |
| BldgConnect_2 | SiteConnect_2 | Bldg | 10 | 150 |
| BldgConnect_1 | SiteConnect_1 | Bldg | 10 | 150 |

Node Results:

| Node ID | Demand LPS | Head m | Pressure m | Quality |
|---------------|------------|--------|------------|----------------|
| SiteConnect_1 | 0.00 | 106.49 | 49.49 | 0.00 |
| SiteConnect_2 | 0.00 | 106.49 | 49.49 | 0.00 |
| Bldg | 9.00 | 106.48 | 50.48 | 0.00 |
| East | -9.00 | 106.50 | 0.00 | 0.00 Reservoir |

Link Results:

| Link ID | Flow LPS | velocityUnit m/s | Headloss m/km | Status |
|---------------|----------|------------------|---------------|--------|
| NelsonWM3 | -4.45 | 0.14 | 0.19 | Open |
| NelsonWM2 | 9.00 | 0.28 | 0.68 | Open |
| BldgConnect_2 | 4.55 | 0.26 | 1.00 | Open |
| BldgConnect_1 | 4.45 | 0.25 | 0.96 | Open |


```
*****
*                               E P A N E T                               *
*                               Hydraulic and Water Quality                 *
*                               Analysis for Pipe Networks                   *
*                               Version 2.2                                 *
*****
```

Input File: 112 Nelson - Model.net

Link - Node Table:

| Link ID | Start Node | End Node | Length m | Diameter mm |
|---------------|---------------|---------------|----------|-------------|
| NelsonWM3 | SiteConnect_1 | SiteConnect_2 | 2 | 203 |
| NelsonWM2 | East | SiteConnect_2 | 10 | 203 |
| BldgConnect_2 | SiteConnect_2 | Bldg | 10 | 150 |
| BldgConnect_1 | SiteConnect_1 | Bldg | 10 | 150 |

Node Results:

| Node ID | Demand LPS | Head m | Pressure m | Quality |
|---------------|------------|--------|------------|----------------|
| SiteConnect_1 | 0.00 | 96.48 | 39.48 | 0.00 |
| SiteConnect_2 | 0.00 | 96.60 | 39.60 | 0.00 |
| Bldg | 204.00 | 93.37 | 37.37 | 0.00 |
| East | -204.00 | 98.80 | 0.00 | 0.00 Reservoir |

Link Results:

| Link ID | Flow LPS | velocityUnit m/s | Headloss m/km | Status |
|---------------|----------|------------------|---------------|--------|
| NelsonWM3 | -100.96 | 3.12 | 59.74 | Open |
| NelsonWM2 | 204.00 | 6.30 | 219.78 | Open |
| BldgConnect_2 | 103.04 | 5.83 | 323.12 | Open |
| BldgConnect_1 | 100.96 | 5.71 | 311.17 | Open |

B SANITARY DEMAND

SANITARY SEWAGE - PROPOSED SANITARY FLOWS

| Average Wastewater Flows: | |
|----------------------------------|---------------------|
| Residential | 280 L/c/d |
| Commercial | 28,000 L/gross ha/d |
| Institutional | 28,000 L/gross ha/d |
| Light Industrial | 35,000 L/gross ha/d |
| Heavy Industrial | 55,000 L/gross ha/d |

| Peaking Factors: | |
|---------------------------|----------------------------|
| Residential | Harmon Equation |
| Commercial (>20% Area) | 1.5 |
| Commercial (<20% Area) | 1.0 |
| Institutional (>20% Area) | 1.5 |
| Institutional (<20% Area) | 1.0 |
| Industrial | Per Figure in Appendix 4-B |

$$P.F. = 1 + \left(\frac{14}{4 + \left(\frac{P}{1000} \right)^{0.5}} \right) * K$$

where P = population
K = correction factor = 0.8

| Peak Extraneous Flows: | |
|-------------------------------|------|
| Infiltration Allowance | 0.33 |
| Less than 10 ha: | |
| Foundation Drain Allowance | 5.0 |
| 10 ha - 100 ha: | |
| Foundation Drain Allowance | 3.0 |
| Greater than 100 ha: | |
| Foundation Drain Allowance | 2.0 |

| Unit Type | Person Per Unit | Unit Count |
|--------------------------|-----------------|------------|
| Single Family | 3.4 | |
| Semi-detached | 2.7 | |
| Duplex | 2.3 | |
| Townhouse (row) | 2.7 | |
| Apartments: | | |
| Bachelor | 1.4 | |
| 1 Bedroom | 1.4 | |
| 2 Bedroom | 2.1 | |
| 3 Bedroom | 3.1 | |
| Average Apt. | 1.8 | |
| 112 Nelson Units: | | |
| Micro Bachelor | 1.4 | 85 |
| Toronto Studio | 1.4 | 197 |
| One Bedroom | 1.4 | 8 |
| Three Bedroom | 3.1 | 32 |
| Total Population: | | 505 |
| Total Area (ha): | | 0.3 |

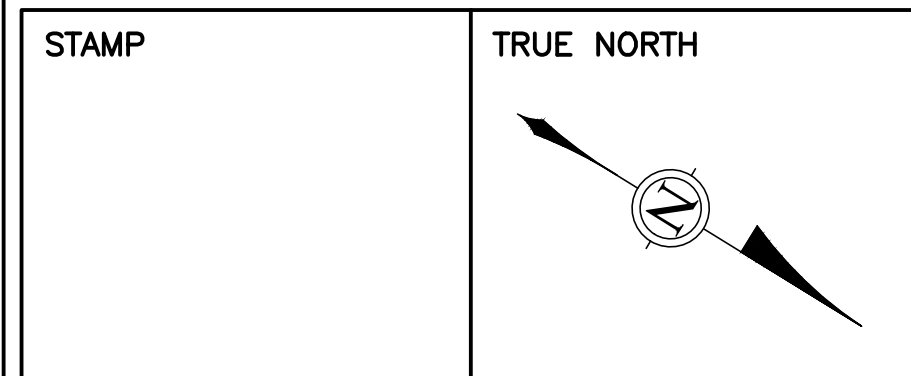
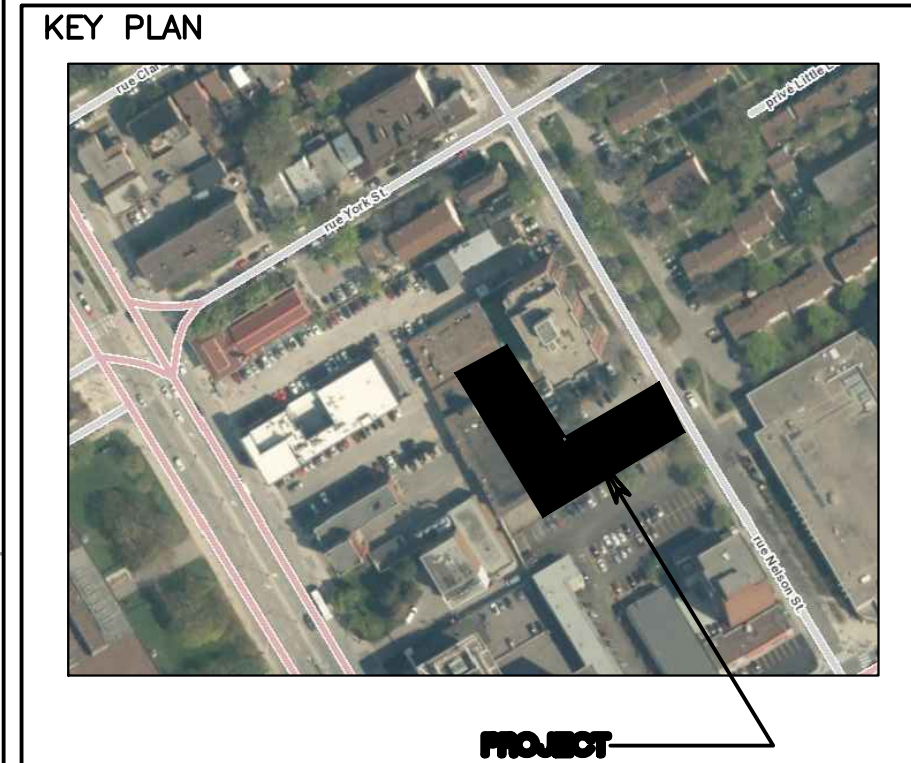
| 112 Nelson | | | |
|--------------------------------|--------------------|---|-----------------|
| Demand Type= | Residential | | |
| Average Day Demand= | 280 | | L/c/d |
| Population | 505 | | |
| Site Area (ha) | 0.295 | | |
| | 280 | x | 505 |
| | 141,456 | | L/day |
| Average Daily Flow= | 1.64 | | L/s |
| Peaking Factor Type | Residential | | |
| Peaking Factor | 3.38 | | *Max=4 |
| | 3.38 | x | average day |
| | 3.38 | x | 141,456 |
| | 477,772 | | L/day |
| Peak Daily Flow= | 5.53 | | L/s |
| Infiltration Allowance | 0.33 | | |
| | 0.33 | x | lot area |
| | 0.33 | x | 0.3 |
| Peak Extraneous Flow= | 0.10 | | L/s |
| | peak daily flow | + | extraneous flow |
| | 5.53 | + | 0.10 |
| Total Peak Design Flow= | 5.63 | | L/s |

| | |
|---------------------------------|-----------------|
| 112 Nelson St. | |
| Peak Design Flow = | 5.63 L/s |
| Total Peak Design Flow = | 5.63 L/s |

WSP Canada
Sanitary Sewer Design Sheet

| LOCATION | | | RESIDENTIAL AREA AND POPULATION | | | | | | INSTITUTIONAL | | | C+I+I | INFILTRATION | | | TOTAL FLOW (l/s) | PIPE | | | | MANHOLE | | |
|--|----------|-------|---------------------------------|------|-----------------------|------|------------|-----------------|---------------------------------------|-----------------|-----------------|--|-----------------|--------------------|------------|--------------------|-----------|-----------|-------------------|------------------------|-------------------|---------------|-----------------|
| CONNECTIONS | FROM MH | TO MH | AREA (Ha) | POP. | CUMMULATIVE AREA (Ha) | POP. | PEAK FACT. | PEAK FLOW (l/s) | AREA (Ha) | ACCU. AREA (Ha) | PEAK FLOW (l/s) | TOTAL AREA (Ha) | ACCU. AREA (Ha) | INFILT. FLOW (l/s) | LENGTH (m) | | DIA. (mm) | SLOPE (%) | CAP. (FULL) (l/s) | PIPE CAPACITY USED (%) | VEL. (FULL) (m/s) | UP INVERT (m) | DOWN INVERT (m) |
| Building | Building | SAMH1 | 0.3 | 505 | 0.30 | 505 | 3.4 | 5.56 | 0.000 | 0.000 | 0.00 | 0.3 | 0.3 | 0.10 | 5.66 | 1.0 | 150.00 | 1.0% | 15.01 | 37.7% | 0.85 | 56.33 | 56.32 |
| | SAMH2 | Road | 0.0 | 0 | 0.30 | 505 | 0.0 | 5.56 | 0.000 | 0.000 | 0.00 | 0.0 | 0.3 | 0.10 | 5.66 | 4.3 | 150.00 | 1.2% | 16.46 | 34.4% | 0.93 | 56.32 | 56.27 |
| DESIGN PARAMETERS | | | | | | | | | Designed: Erin Blanchette, EIT | | | PROJECT: 112 Nelson St. Residential Development | | | | | | | | | | | |
| Residential: 280 L/cap/d Peak Factor = 3.4 Extraneous Flow = 0.33 l/s/ha Minimum Velocity = 0.60 m/s Manning's n = 0.013 | | | | | | | | | Checked: Stephen McCaughey, P.Eng. | | | LOCATION: 112 Nelson St., Ottawa, ON | | | | | | | | | | | |
| | | | | | | | | | Dwg. Reference: | | | File Ref.: 211-04788-00 | | | | Date: July 2021 | | | | Sheet No. 1 of 1 | | | |

C SITE DRAWINGS



ALL CONTRACTORS TO VERIFY ALL DIMENSIONS ON SITE AND TO REPORT ALL ERRORS AND/OR OMISSIONS TO THE ARCHITECT.
ALL CONTRACTORS MUST COMPLY WITH ALL CODES AND BYLAWS AND OTHER AUTHORITIES HAVING JURISDICTION OVER THE WORK.
DO NOT SCALE DRAWINGS.
THIS DRAWING MAY NOT BE USED FOR CONSTRUCTION UNTIL SIGNED BY THE ARCHITECT.
COPYRIGHT RESERVED.

NOT FOR CONSTRUCTION

| NO. | REVISION | DDMMYY DATE |
|-----|------------------|----------------|
| 2 | REISSUED FOR SPA | 08/26/21 |
| 1 | ISSUED FOR SPA | 07/16/21 |



CONSULTANTS:
STRUCTURAL -
MECHANICAL -
ELECTRICAL -
LANDSCAPING -

112 NELSON ST

SERVICING PLAN
C001

LEGEND

- x 58.54 EXISTING GRADE ELEVATION
- ST EXISTING STORM SEWER
- S EXISTING SANITARY SEWER
- W EXISTING WATERMAIN
- CB EXISTING CATCH BASIN
- MH-ST EXISTING STORM MANHOLE
- MH-S EXISTING SANITARY MANHOLE
- FH EXISTING FIRE HYDRANT
- WV EXISTING VALVE & BOX
- 59.71C PROPOSED TOP & BOTTOM OF CURB
- 58.87C PROPOSED GARDE ELEVATION
- 3.8% PROPOSED SLOPE
- STM PROPOSED STORM SEWER
- S PROPOSED SANITARY SEWER
- W PROPOSED WATER SERVICE
- CB PROPOSED CATCHBASIN
- PROPOSED STORM MANHOLE
- PROPOSED SANITARY MANHOLE
- PROPOSED FIRE HYDRANT
- PROPOSED VALVE & BOX
- SF PROPOSED LIGHT DUTY SILT FENCE

NOTES: STORM SEWERS AND STRUCTURES

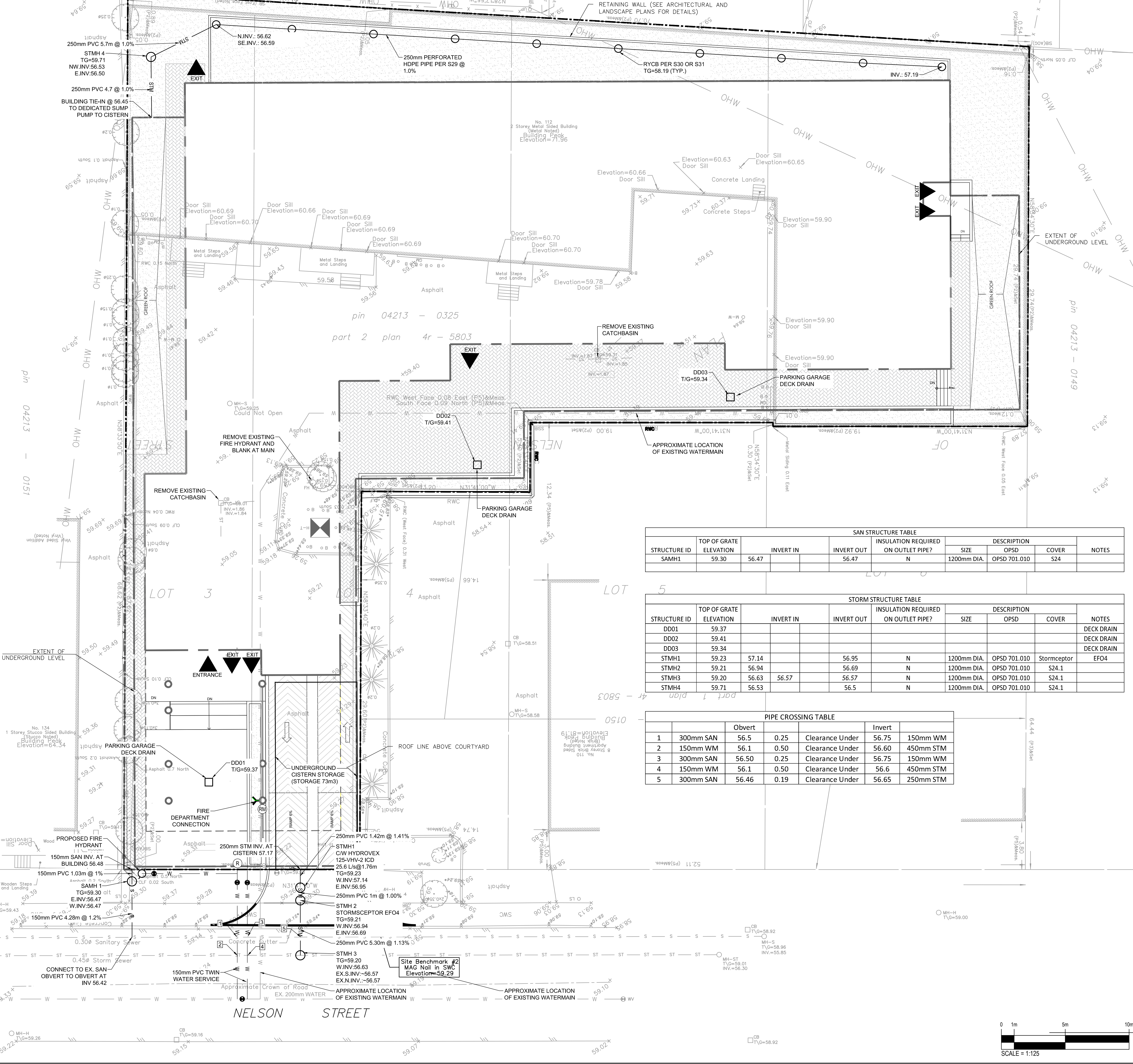
- ALL STORM SEWER MATERIALS AND CONSTRUCTION METHODS SHALL CONFORM TO THE CURRENT CITY OF OTTAWA STANDARDS AND SPECIFICATIONS. PROVIDE CCTV INSPECTION REPORTS FOR ALL NEW STORM SEWERS, SERVICES AND CB LEADS.
- STORM SEWERS 450mm DIAMETER AND SMALLER SHALL BE PVC SDR-35, WITH RUBBER GASKET PER CSA A-257.3.
- STORM SEWER LARGER THAN 450mm SHALL BE REINFORCED CONCRETE CLASS 100.
- SEWER BEDDING AS PER CITY OF OTTAWA DETAIL S6.
- ALL STORM MANHOLES TO BE AS PER STORM STRUCTURE TABLE.
- ANY NEW OR EXISTING STORM SEWER WITH LESS THAN 2.0m COVER REQUIRES THERMAL INSULATION AS PER CITY OF OTTAWA STANDARD W22, OR APPROVED BY THE ENGINEER.
- ALL CATCHBASIN LEADS TO BE MINIMUM 200mm DIAMETER AT MINIMUM 1.0% SLOPE UNLESS OTHERWISE SPECIFIED.
- STORM CATCHBASINS AS PER OPSD 705.010 AND FRAME/COVER AS PER CITY STANDARD DRAWINGS S19. STORM CBMHs AS INDICATED IN TABLE WITH SUMP. ADJUSTMENT SECTIONS SHALL BE AS PER OPSD 704.010.
- INSTALLATION OF FLOW CONTROL ICDS TO BE VERIFIED BY QUALITY VERIFICATION ENGINEER RETAINED BY CONTRACTOR.
- PROVIDE BACKWATER VALVE ON FOUNDATION DRAIN PER S14

NOTES: SANITARY SEWER AND MANHOLES

- ALL SANITARY SEWER, SANITARY SEWER APPURTENANCES AND CONSTRUCTION METHODS SHALL CONFORM TO THE CURRENT CITY OF OTTAWA STANDARDS AND SPECIFICATIONS. PROVIDE CCTV INSPECTION REPORTS FOR ALL NEW SANITARY PIPING.
- SANITARY SEWER PIPE SIZE 150mm DIAMETER AND GREATER TO BE PVC SDR-35 (UNLESS SPECIFIED OTHERWISE) WITH RUBBER GASKET TYPE JOINTS IN CONFORMANCE WITH CSA B112.2.3.4.
- SEWER BEDDING AS PER CITY OF OTTAWA DETAIL S6.
- ALL SANITARY MANHOLES 1200mm IN DIAMETER TO BE AS PER OPSD 701.01. FRAME AND COVER TO BE AS PER CITY OF OTTAWA STANDARD S25 AND S24.
- MAINTENANCE HOLE BENCHING AND PIPE OPENING ALTERNATIVES AS PER THE OPSD 701.021
- ANY SANITARY SEWER WITH LESS THAN 2.0m COVER REQUIRES THERMAL INSULATION AS PER CITY OF OTTAWA STANDARD W22, OR APPROVED BY THE ENGINEER.
- PROVIDE BACKWATER VALVE PER S14.1

NOTES: WATERMAIN

- ALL WATERMAIN AND WATERMAIN APPURTENANCES, MATERIALS, CONSTRUCTION AND TESTING METHODS SHALL CONFORM TO THE CURRENT CITY OF OTTAWA AND MINISTRY OF ENVIRONMENT STANDARDS AND SPECIFICATIONS.
- ALL WATERMAIN 300mm DIAMETER AND SMALLER TO BE POLY VINYL CHLORIDE (PVC) CLASS 150 DR 18 MEETING AWWA SPECIFICATION C900.
- ALL WATERMAIN TO BE INSTALLED AT MINIMUM COVER OF 2.4m BELOW FINISHED GRADE. WHERE WATERMANS CROSS OVER OTHER UTILITIES, A MINIMUM 0.30m CLEARANCE SHALL BE MAINTAINED. WHERE WATERMANS CROSS UNDER OTHER UTILITIES, A MINIMUM 0.50m CLEARANCE SHALL BE MAINTAINED. WHERE THE MINIMUM SEPARATION CANNOT BE ACHIEVED, THE WATERMAIN SHALL BE INSTALLED AS PER CITY OF OTTAWA STANDARDS W25 AND W25.2 WHERE 2.4m MINIMUM DEPTH CANNOT BE ACHIEVED, THERMAL INSULATION SHALL BE PROVIDED AS PER CITY OF OTTAWA STANDARD W22. WHERE A WATERMAIN IS IN CLOSE PROXIMITY TO AN OPEN STRUCTURE, THERMAL INSULATION SHALL BE PROVIDED AS PER CITY OF OTTAWA STANDARD W23.
- CONCRETE THRUST BLOCKS AND MECHANICAL RESTRAINTS ARE TO BE INSTALLED AT ALL TEES, BENDS, HYDRANTS, REDUCERS, ENDS OF MAINS AND CONNECTIONS 100mm AND LARGER, IN ACCORDANCE WITH CITY OF OTTAWA STANDARDS W23.3 & W25.4.
- CATHODIC PROTECTION REQUIRED FOR ALL IRON FITTINGS AS PER CITY OF OTTAWA STANDARD W40 & W42.
- ALL VALVES AND VALVE BOXES AND CHAMBERS, HYDRANTS, AND HYDRANT VALVES AND ASSEMBLES SHALL BE INSTALLED AS PER CITY OF OTTAWA STANDARD.
- FIRE HYDRANT LOCATION AND INSTALLATION AS PER CITY OF OTTAWA STANDARD W18 & W19. CONTRACTOR TO PROVIDE FLOW TEST AND PAINTING OF NEW HYDRANT IN ACCORDANCE WITH CITY STANDARDS.
- IF WATER MAIN MUST BE DEFLECTED TO MEET ALIGNMENT, ENSURE THAT THE AMOUNT OF DEFLECTION USED IS LESS THAN HALF THAT RECOMMENDED BY THE MANUFACTURER.



SAN STRUCTURE TABLE

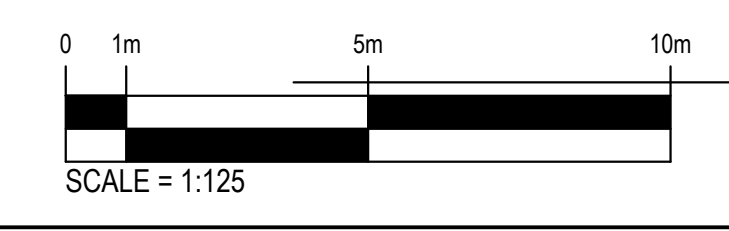
| STRUCTURE ID | TOP OF GRATE ELEVATION | INVERT IN | INVERT OUT | INSULATION REQUIRED ON OUTLET PIPE? | DESCRIPTION | NOTES |
|--------------|------------------------|-----------|------------|-------------------------------------|--------------------------|-------|
| SAMH1 | 59.30 | 56.47 | 56.47 | N | 1200mm DIA. OPSD 701.010 | S24 |

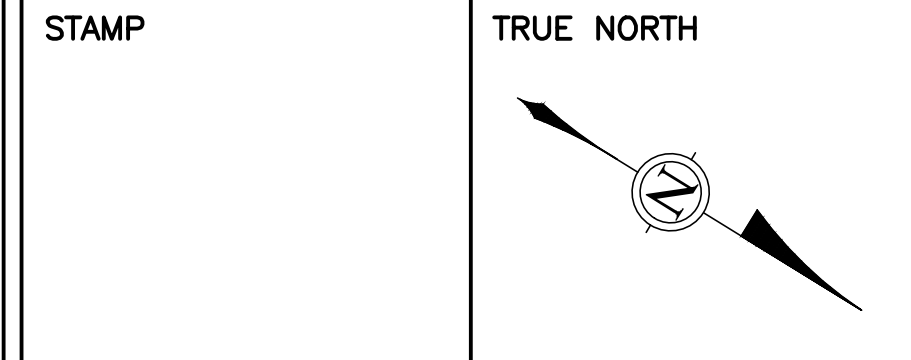
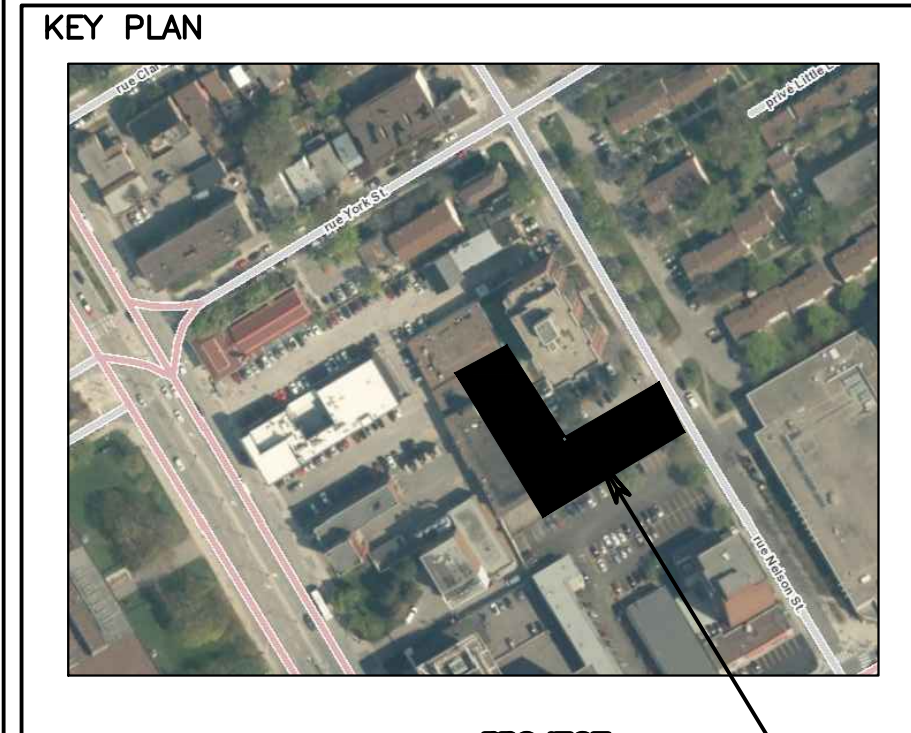
STORM STRUCTURE TABLE

| STRUCTURE ID | TOP OF GRATE ELEVATION | INVERT IN | INVERT OUT | INSULATION REQUIRED ON OUTLET PIPE? | DESCRIPTION | NOTES |
|--------------|------------------------|-----------|------------|-------------------------------------|--------------------------|------------------|
| DD01 | 59.37 | | | | | DECK DRAIN |
| DD02 | 59.41 | | | | | DECK DRAIN |
| DD03 | 59.34 | | | | | DECK DRAIN |
| STMH1 | 59.23 | 57.14 | 56.95 | N | 1200mm DIA. OPSD 701.010 | Stormceptor EFO4 |
| STMH2 | 59.21 | 56.94 | 56.69 | N | 1200mm DIA. OPSD 701.010 | S24.1 |
| STMH3 | 59.20 | 56.63 | 56.57 | N | 1200mm DIA. OPSD 701.010 | S24.1 |
| STMH4 | 59.71 | 56.53 | 56.5 | N | 1200mm DIA. OPSD 701.010 | S24.1 |

PIPE CROSSING TABLE

| | Obvert | Invert | Clearance Under | Invert | |
|---|-----------|--------|-----------------|-----------------|-----------------|
| 1 | 300mm SAN | 56.5 | 0.25 | Clearance Under | 56.75 150mm WM |
| 2 | 150mm WM | 56.1 | 0.50 | Clearance Under | 56.60 450mm STM |
| 3 | 300mm SAN | 56.50 | 0.25 | Clearance Under | 56.75 150mm WM |
| 4 | 150mm WM | 56.1 | 0.50 | Clearance Under | 56.6 450mm STM |
| 5 | 300mm SAN | 56.46 | 0.19 | Clearance Under | 56.65 250mm STM |





ALL CONTRACTORS TO VERIFY ALL DIMENSIONS ON SITE AND TO REPORT ALL ERRORS AND/OR OMISSIONS TO THE ARCHITECT.
ALL CONTRACTORS MUST COMPLY WITH ALL CODES AND BYLAWS AND OTHER AUTHORITIES HAVING JURISDICTION OVER THE WORK.
DO NOT SCALE DRAWINGS.
THIS DRAWING MAY NOT BE USED FOR CONSTRUCTION UNTIL SIGNED BY THE ARCHITECT.
COPYRIGHT RESERVED.

NOT FOR CONSTRUCTION

| | | |
|-----|------------------|-------------|
| 2 | REISSUED FOR SPA | 08/25/21 |
| 1 | ISSUED FOR SPA | 07/16/21 |
| NO. | REVISION | DDMMYY DATE |

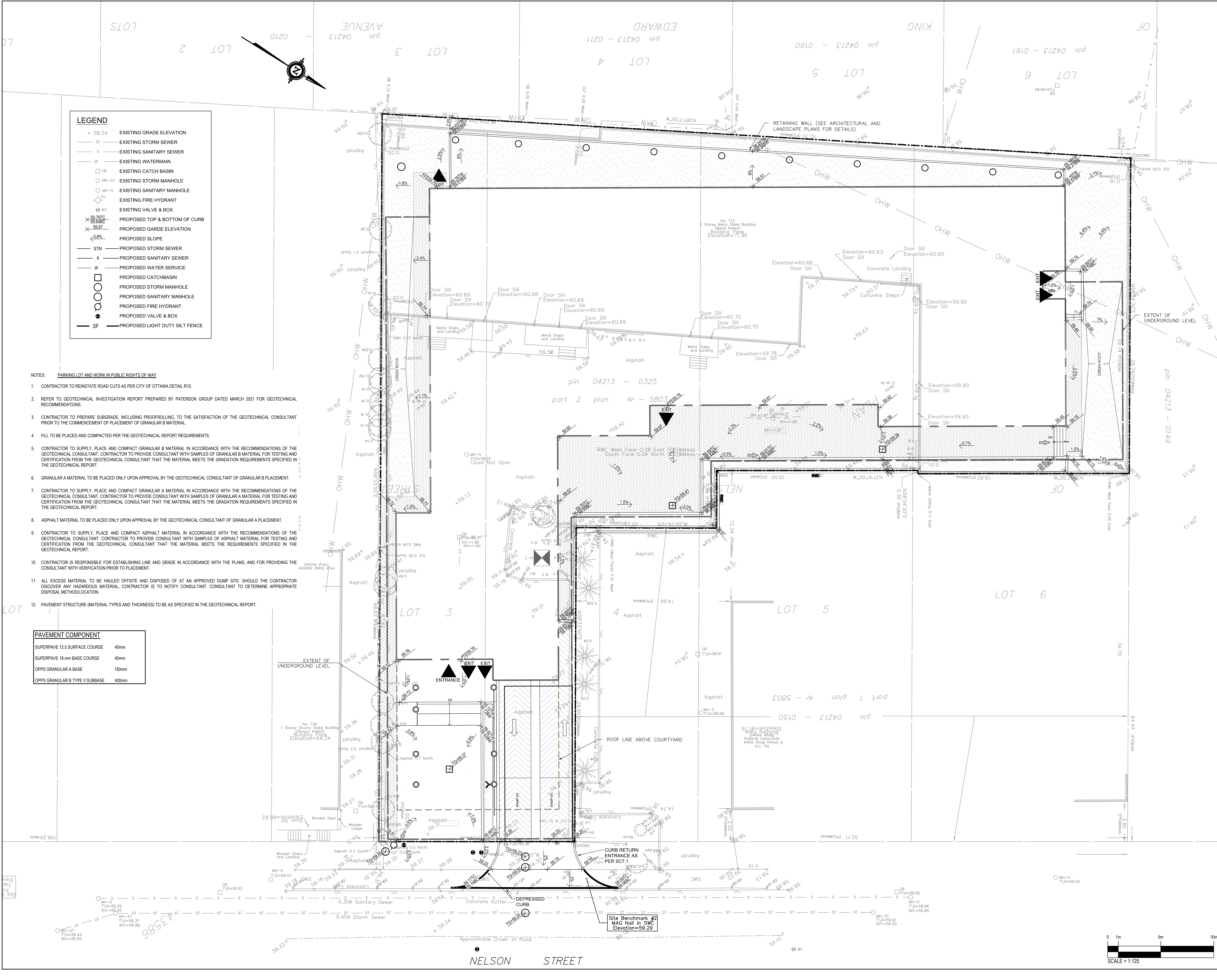


CONSULTANTS:
STRUCTURAL -
MECHANICAL -
ELECTRICAL -
LANDSCAPING -

112 NELSON ST

GRADING PLAN

C002



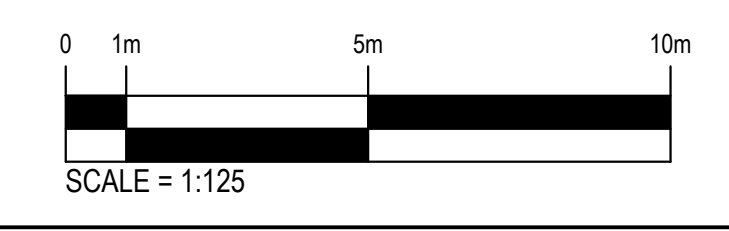
LEGEND

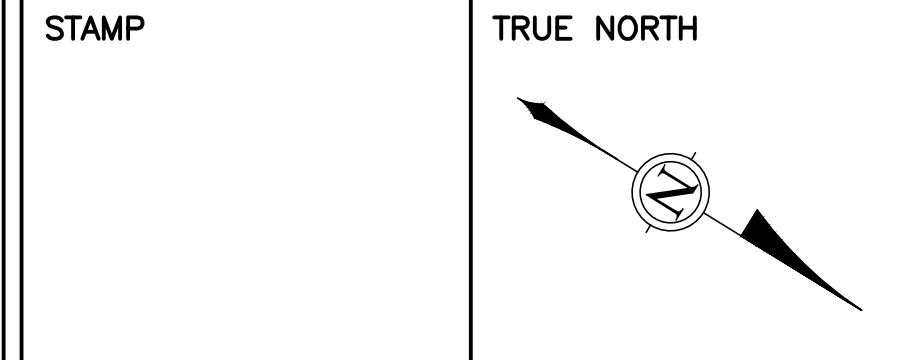
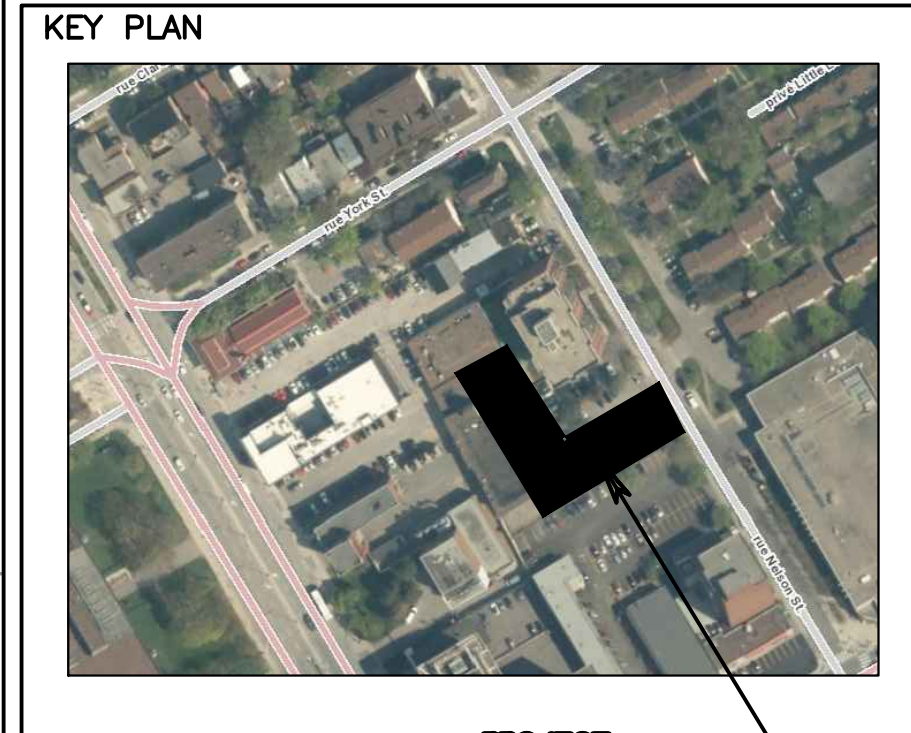
- x 58.54 EXISTING GRADE ELEVATION
- ST EXISTING STORM SEWER
- S EXISTING SANITARY SEWER
- W EXISTING WATERMAIN
- CB EXISTING CATCH BASIN
- MH-ST EXISTING STORM MANHOLE
- MH-S EXISTING SANITARY MANHOLE
- FH EXISTING FIRE HYDRANT
- VV EXISTING VALVE & BOX
- 59.71C PROPOSED TOP & BOTTOM OF CURB
- 59.87 PROPOSED GARDE ELEVATION
- 3.8% PROPOSED SLOPE
- STM PROPOSED STORM SEWER
- S PROPOSED SANITARY SEWER
- W PROPOSED WATER SERVICE
- CB PROPOSED CATCHBASIN
- MH-ST PROPOSED STORM MANHOLE
- MH-S PROPOSED SANITARY MANHOLE
- FH PROPOSED FIRE HYDRANT
- VV PROPOSED VALVE & BOX
- SF PROPOSED LIGHT DUTY SILT FENCE

- NOTES: PARKING LOT AND WORK IN PUBLIC RIGHTS OF WAY
- CONTRACTOR TO REINSTATE ROAD CUTS AS PER CITY OF OTTAWA DETAIL R10.
 - REFER TO GEOTECHNICAL INVESTIGATION REPORT PREPARED BY PATERSON GROUP DATED MARCH 2021 FOR GEOTECHNICAL RECOMMENDATIONS.
 - CONTRACTOR TO PREPARE SUBGRADE, INCLUDING PROOFROLLING, TO THE SATISFACTION OF THE GEOTECHNICAL CONSULTANT PRIOR TO THE COMMENCEMENT OF PLACEMENT OF GRANULAR B MATERIAL.
 - FILL TO BE PLACED AND COMPACTED PER THE GEOTECHNICAL REPORT REQUIREMENTS.
 - CONTRACTOR TO SUPPLY, PLACE AND COMPACT GRANULAR B MATERIAL IN ACCORDANCE WITH THE RECOMMENDATIONS OF THE GEOTECHNICAL CONSULTANT. CONTRACTOR TO PROVIDE CONSULTANT WITH SAMPLES OF GRANULAR B MATERIAL FOR TESTING AND CERTIFICATION FROM THE GEOTECHNICAL CONSULTANT THAT THE MATERIAL MEETS THE GRADATION REQUIREMENTS SPECIFIED IN THE GEOTECHNICAL REPORT.
 - GRANULAR A MATERIAL TO BE PLACED ONLY UPON APPROVAL BY THE GEOTECHNICAL CONSULTANT OF GRANULAR B PLACEMENT.
 - CONTRACTOR TO SUPPLY, PLACE AND COMPACT GRANULAR A MATERIAL IN ACCORDANCE WITH THE RECOMMENDATIONS OF THE GEOTECHNICAL CONSULTANT. CONTRACTOR TO PROVIDE CONSULTANT WITH SAMPLES OF GRANULAR A MATERIAL FOR TESTING AND CERTIFICATION FROM THE GEOTECHNICAL CONSULTANT THAT THE MATERIAL MEETS THE GRADATION REQUIREMENTS SPECIFIED IN THE GEOTECHNICAL REPORT.
 - ASPHALT MATERIAL TO BE PLACED ONLY UPON APPROVAL BY THE GEOTECHNICAL CONSULTANT OF GRANULAR A PLACEMENT.
 - CONTRACTOR TO SUPPLY, PLACE AND COMPACT ASPHALT MATERIAL IN ACCORDANCE WITH THE RECOMMENDATIONS OF THE GEOTECHNICAL CONSULTANT. CONTRACTOR TO PROVIDE CONSULTANT WITH SAMPLES OF ASPHALT MATERIAL FOR TESTING AND CERTIFICATION FROM THE GEOTECHNICAL CONSULTANT THAT THE MATERIAL MEETS THE REQUIREMENTS SPECIFIED IN THE GEOTECHNICAL REPORT.
 - CONTRACTOR IS RESPONSIBLE FOR ESTABLISHING LINE AND GRADE IN ACCORDANCE WITH THE PLANS, AND FOR PROVIDING THE CONSULTANT WITH VERIFICATION PRIOR TO PLACEMENT.
 - ALL EXCESS MATERIAL TO BE HAILED OFFSITE AND DISPOSED OF AT AN APPROVED DUMP SITE. SHOULD THE CONTRACTOR DISCOVER ANY HAZARDOUS MATERIAL, CONTRACTOR IS TO NOTIFY CONSULTANT. CONSULTANT TO DETERMINE APPROPRIATE DISPOSAL METHOD/LOCATION.
 - PAVEMENT STRUCTURE (MATERIAL TYPES AND THICKNESS) TO BE AS SPECIFIED IN THE GEOTECHNICAL REPORT.

PAVEMENT COMPONENT

| | |
|---------------------------------|-------|
| SUPERPAVE 12.5 SURFACE COURSE | 40mm |
| SUPERPAVE 19mm BASE COURSE | 40mm |
| OPPS GRANULAR A BASE | 150mm |
| OPPS GRANULAR B TYPE II SUBBASE | 400mm |





ALL CONTRACTORS TO VERIFY ALL DIMENSIONS ON SITE AND TO REPORT ALL ERRORS AND/OR OMISSIONS TO THE ARCHITECT.

ALL CONTRACTORS MUST COMPLY WITH ALL CODES AND BYLAWS AND OTHER AUTHORITIES HAVING JURISDICTION OVER THE WORK.

DO NOT SCALE DRAWINGS.

THIS DRAWING MAY NOT BE USED FOR CONSTRUCTION UNTIL SIGNED BY THE ARCHITECT. COPYRIGHT RESERVED.

NOT FOR CONSTRUCTION

| NO. | REVISION | DDMMYY | DATE |
|-----|------------------|----------|------|
| 2 | REISSUED FOR SPA | 08/25/21 | |
| 1 | ISSUED FOR SPA | 07/16/21 | |

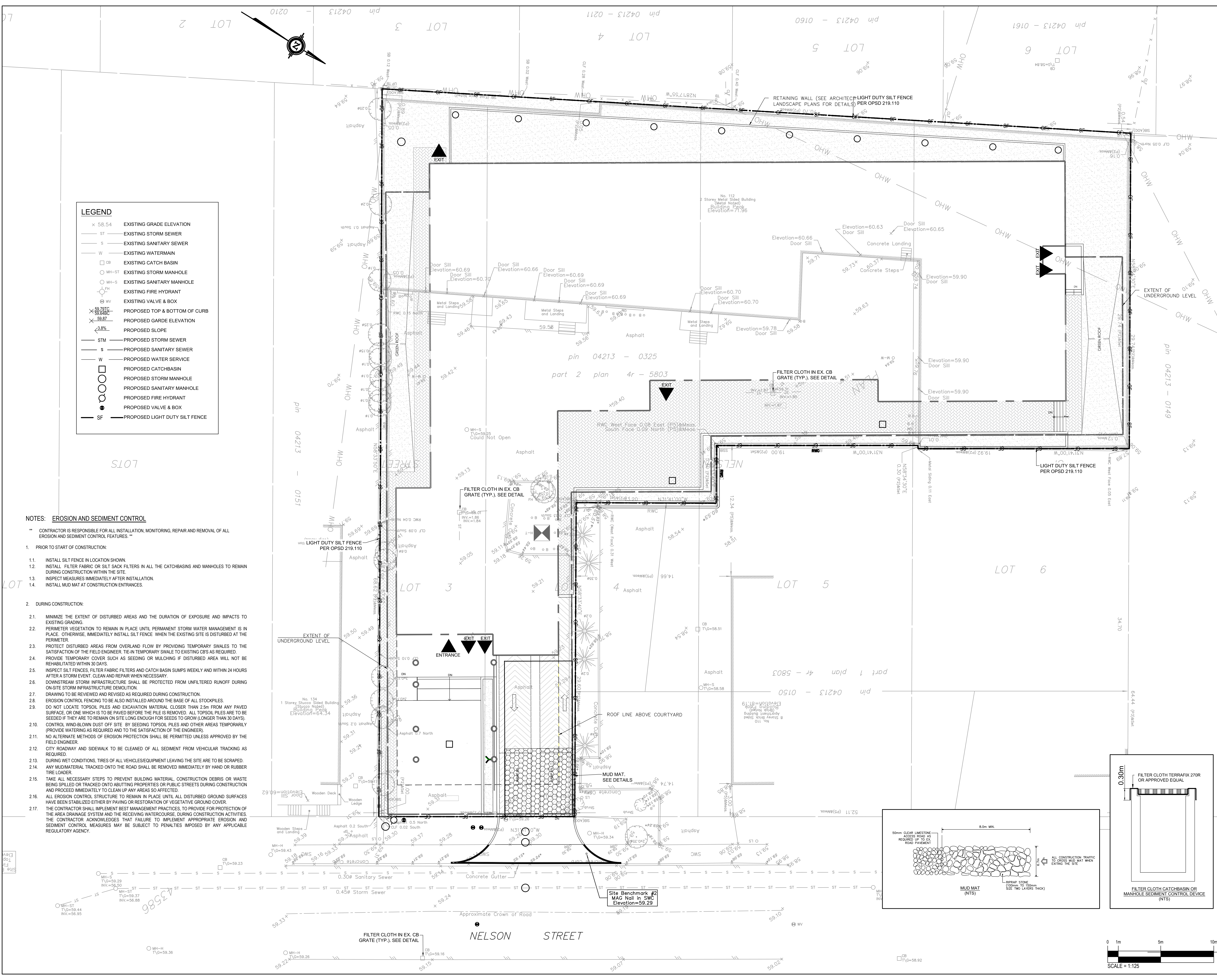


CONSULTANTS:
STRUCTURAL -
MECHANICAL -
ELECTRICAL -
LANDSCAPING -

112 NELSON ST

EROSION AND SEDIMENT CONTROL PLAN

C003

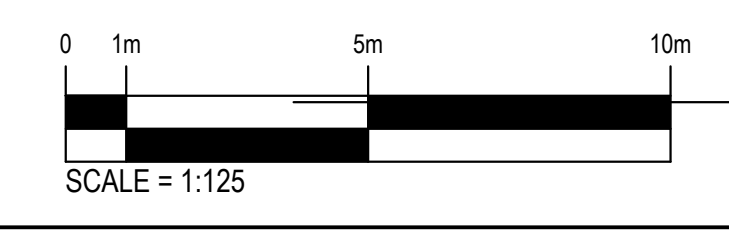
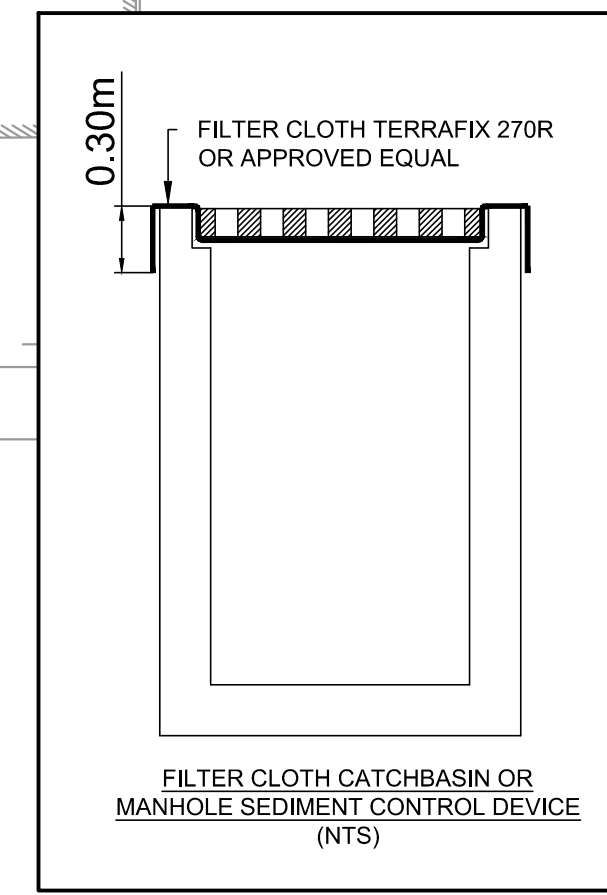
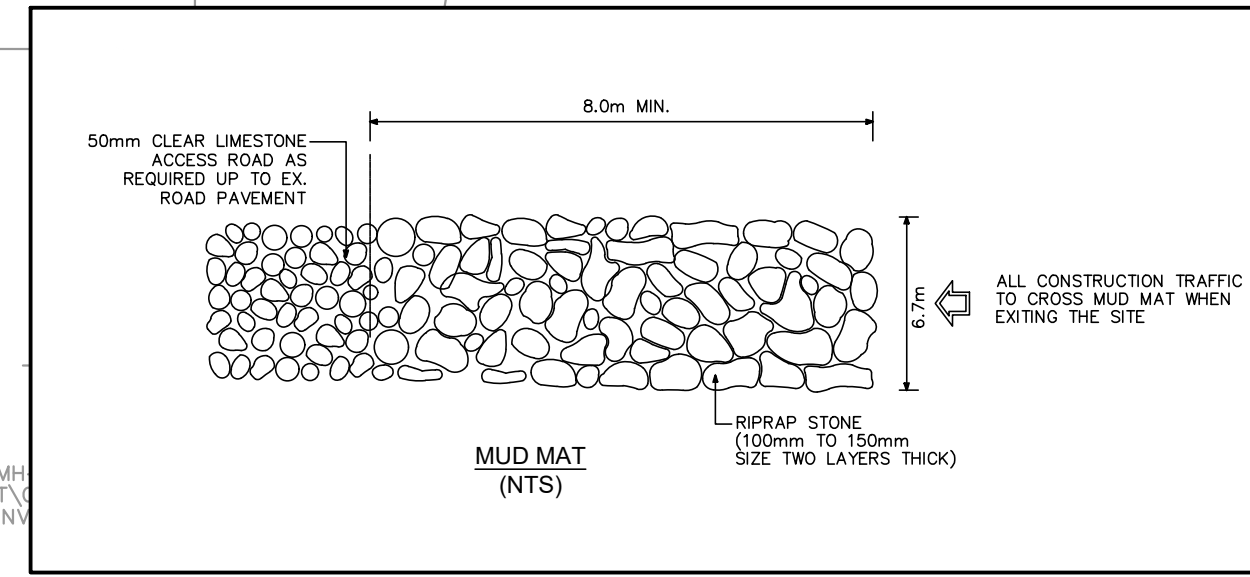


LEGEND

- x 58.54 EXISTING GRADE ELEVATION
- ST EXISTING STORM SEWER
- S EXISTING SANITARY SEWER
- W EXISTING WATERMAIN
- CB EXISTING CATCH BASIN
- MH-ST EXISTING STORM MANHOLE
- MH-S EXISTING SANITARY MANHOLE
- CH EXISTING FIRE HYDRANT
- WV EXISTING VALVE & BOX
- x 59.71C PROPOSED TOP & BOTTOM OF CURB
- x 59.87C PROPOSED GARDE ELEVATION
- 3.8% PROPOSED SLOPE
- STM PROPOSED STORM SEWER
- S PROPOSED SANITARY SEWER
- W PROPOSED WATER SERVICE
- CB PROPOSED CATCHBASIN
- MH PROPOSED STORM MANHOLE
- MH-S PROPOSED SANITARY MANHOLE
- CH PROPOSED FIRE HYDRANT
- WV PROPOSED VALVE & BOX
- SF PROPOSED LIGHT DUTY SILT FENCE

NOTES: EROSION AND SEDIMENT CONTROL

- ** CONTRACTOR IS RESPONSIBLE FOR ALL INSTALLATION, MONITORING, REPAIR AND REMOVAL OF ALL EROSION AND SEDIMENT CONTROL FEATURES. **
- PRIOR TO START OF CONSTRUCTION:
 - INSTALL SILT FENCE IN LOCATION SHOWN.
 - INSTALL FILTER FABRIC OR SILT SACK FILTERS IN ALL THE CATCHBASINS AND MANHOLES TO REMAIN DURING CONSTRUCTION WITHIN THE SITE.
 - INSPECT MEASURES IMMEDIATELY AFTER INSTALLATION.
 - INSTALL MUD MAT AT CONSTRUCTION ENTRANCES.
 - DURING CONSTRUCTION:
 - MINIMIZE THE EXTENT OF DISTURBED AREAS AND THE DURATION OF EXPOSURE AND IMPACTS TO EXISTING GRADING.
 - PERIMETER VEGETATION TO REMAIN IN PLACE UNTIL PERMANENT STORM WATER MANAGEMENT IS IN PLACE. OTHERWISE, IMMEDIATELY INSTALL SILT FENCE WHEN THE EXISTING SITE IS DISTURBED AT THE PERIMETER.
 - PROTECT DISTURBED AREAS FROM OVERLAND FLOW BY PROVIDING TEMPORARY SWALES TO THE SATISFACTION OF THE FIELD ENGINEER. TIE-IN TEMPORARY SWALE TO EXISTING CBS AS REQUIRED.
 - PROVIDE TEMPORARY COVER SUCH AS SEEDING OR MULCHING IF DISTURBED AREA WILL NOT BE REHABILITATED WITHIN 30 DAYS.
 - INSPECT SILT FENCES, FILTER FABRIC FILTERS AND CATCH BASIN SUMPS WEEKLY AND WITHIN 24 HOURS AFTER A STORM EVENT. CLEAN AND REPAIR WHEN NECESSARY.
 - DOWNSTREAM STORM INFRASTRUCTURE SHALL BE PROTECTED FROM UNFILTERED RUNOFF DURING ON-SITE STORM INFRASTRUCTURE DEMOLITION.
 - DRAWINGS TO BE REVIEWED AND REVISED AS REQUIRED DURING CONSTRUCTION.
 - EROSION CONTROL FENCING TO BE ALSO INSTALLED AROUND THE BASE OF ALL STOCKPILES.
 - DO NOT LOCATE TOPSOIL PILES AND EXCAVATION MATERIAL CLOSER THAN 2.5m FROM ANY PAVED SURFACE, OR ONE WHICH IS TO BE PAVED BEFORE THE PILE IS REMOVED. ALL TOPSOIL PILES ARE TO BE SEEDED IF THEY ARE TO REMAIN ON SITE LONG ENOUGH FOR SEEDS TO GROW (LONGER THAN 30 DAYS).
 - CONTROL WIND-BLOWN DUST OFF SITE BY SEEDING TOPSOIL PILES AND OTHER AREAS TEMPORARILY (PROVIDE WATERING AS REQUIRED AND TO THE SATISFACTION OF THE ENGINEER).
 - NO ALTERNATE METHODS OF EROSION PROTECTION SHALL BE PERMITTED UNLESS APPROVED BY THE FIELD ENGINEER.
 - CITY ROADWAY AND SIDEWALK TO BE CLEANED OF ALL SEDIMENT FROM VEHICULAR TRACKING AS REQUIRED.
 - DURING WET CONDITIONS, TIRES OF ALL VEHICLES/EQUIPMENT LEAVING THE SITE ARE TO BE SCRAPPED.
 - ANY MUD/MATERIAL TRACKED ONTO THE ROAD SHALL BE REMOVED IMMEDIATELY BY HAND OR RUBBER TIRE LOADER.
 - TAKE ALL NECESSARY STEPS TO PREVENT BUILDING MATERIAL, CONSTRUCTION DEBRIS OR WASTE BEING SPILLED OR TRACKED ONTO ADJUTING PROPERTIES OR PUBLIC STREETS DURING CONSTRUCTION AND PROCEED IMMEDIATELY TO CLEAN UP ANY AREAS SO AFFECTED.
 - ALL EROSION CONTROL STRUCTURE TO REMAIN IN PLACE UNTIL ALL DISTURBED GROUND SURFACES HAVE BEEN STABILIZED EITHER BY PAVING OR RESTORATION OF VEGETATIVE GROUND COVER.
 - THE CONTRACTOR SHALL IMPLEMENT BEST MANAGEMENT PRACTICES TO PROVIDE FOR PROTECTION OF THE AREA DRAINAGE SYSTEM AND THE RECEIVING WATERCOURSE. DURING CONSTRUCTION ACTIVITIES, THE CONTRACTOR ACKNOWLEDGES THAT FAILURE TO IMPLEMENT APPROPRIATE EROSION AND SEDIMENT CONTROL MEASURES MAY BE SUBJECT TO PENALTIES IMPOSED BY ANY APPLICABLE REGULATORY AGENCY.



D STORM SEWER DESIGN SHEET

| LOCATION | | | FLOW | | | | | | | | | PIPE | | | | | | | MANHOLE | |
|-------------------|-----------|-----------|---|-----------|----------------|--------------|----------------------|----------------------------|------------------------|-----------------|----------------------------|---|-----------|--------------------|-------------------|-----------------------|---------------------|-----------------|---------------|-----------------|
| Catchment Area | FROM MH | TO MH | Coefficient | Area (m2) | Indiv. 2.78*AC | Cum. 2.78*AC | Time of Conc. (min.) | Rainfall Intensity (mm.hr) | Indiv. Area Flow (L/s) | Cum. Flow (L/s) | Controlled Cum. Flow (L/s) | Length (m) | Dia. (mm) | Slope (%) | Cap. (Full) (L/s) | Velocity (Full) (m/s) | Time of flow (min.) | Ratio (Q/Qfull) | UP INVERT (m) | DOWN INVERT (m) |
| PR01- C | DD03* | TANK** | 0.9 | 137 | 0.034 | 0.034 | 10.00 | 76.81 | 2.64 | 2.64 | 2.64 | 54.00 | 250 | 2.17% | 87.53 | 1.8 | 0.50 | 3% | 58.34 | 57.17 |
| PR01- B | DD02* | TANK** | 0.9 | 137 | 0.034 | 0.034 | 10.00 | 76.81 | 2.64 | 2.64 | 2.64 | 27.00 | 250 | 4.59% | 127.44 | 2.6 | 0.17 | 2% | 58.41 | 57.17 |
| PR01- A | DD01* | TANK** | 0.9 | 24 | 0.006 | 0.006 | 10.00 | 76.81 | 0.46 | 0.46 | 0.46 | 12.00 | 250 | 10.00% | 188.05 | 3.8 | 0.05 | 0% | 58.37 | 57.17 |
| PR01 - D & PR03 | TANK** | STMH3*** | 0.9 | 1881 | 0.471 | 0.545 | 10.00 | 76.81 | 36.15 | 41.88 | 41.88 | 1.42 | 250 | 2.11% | 86.44 | 1.8 | 0.01 | 48% | 57.17 | 57.14 |
| | STMH3*** | STMH2**** | 0.9 | 0 | 0.000 | 0.545 | 10.01 | 76.75 | 0.00 | 41.85 | 25.60 | 1.00 | 250 | 1.00% | 59.47 | 1.2 | 0.01 | 43% | 56.95 | 56.94 |
| | STMH2**** | STMH1 | 0.9 | 0 | 0.000 | 0.545 | 10.08 | 76.49 | 0.00 | 41.71 | 25.60 | 5.3 | 250 | 1.13% | 63.27 | 1.3 | 0.07 | 40% | 56.69 | 56.63 |
| DESIGN PARAMETERS | | | Q = 2.78CIA where, Q = Peak flow in L/s A = Drainage area in ha I = Rainfall intensity (mm/hr) C = Runoff coefficient Ottawa IDF Curve IDF Curve Equation (2yr storm) $I = 732.951/(T+6.199)^{0.81}$ Min. velocity = 0.8 m/s Manning 'n' = 0.013 | | | | | | | | | PROJECT: 112 Nelson Residential Development LOCATION: 112 Nelson St., Ottawa, ON | | | | | | | | |
| | | | Designed: Erin Blanchette, EIT | | | | | | | | | Checked: Stephen McCaughey, P.Eng. | | | | | | | | |
| | | | Dwg. Reference: | | | | | | | | | File Ref.: 211-04788-00 | | Date: July 2021 | | Sheet No. 1 of 3 | | | | |

Note:
 * Deck drains for drainage pipes in underground parking, precise routing by Mechanical Engineer
 ** Underground storage in building footprint includes roof drainage
 *** ICD on STMH3 outlet controlled to 25.6 L/s
 **** Oil Grit Separator

WSP Canada
Storm Sewer Design Sheet

| LOCATION | | | FLOW | | | | | | | | | PIPE | | | | | | MANHOLE | | |
|---|-----------|-----------|---------------------------------------|-----------|----------------|--|----------------------|----------------------------|------------------------|---------------------|----------------------------|------------|-----------|-----------|-------------------|-----------------------|---------------------|-----------------|---------------|-----------------|
| Catchment Area | FROM MH | TO MH | Coefficient | Area (m2) | Indiv. 2.78*AC | Cum. 2.78*AC | Time of Conc. (min.) | Rainfall Intensity (mm.hr) | Indiv. Area Flow (L/s) | Cum. Flow (L/s) | Controlled Cum. Flow (L/s) | Length (m) | Dia. (mm) | Slope (%) | Cap. (Full) (L/s) | Velocity (Full) (m/s) | Time of flow (min.) | Ratio (Q/Qfull) | UP INVERT (m) | DOWN INVERT (m) |
| PR01- C | DD03* | TANK** | 1.0 | 137 | 0.038 | 0.038 | 10.00 | 178.56 | 6.81 | 6.81 | 6.81 | 54.00 | 250 | 2.17% | 87.53 | 1.8 | 0.50 | 8% | 58.34 | 57.17 |
| PR01- B | DD02* | TANK** | 1.0 | 137 | 0.038 | 0.038 | 10.00 | 178.56 | 6.81 | 6.81 | 6.81 | 27.00 | 250 | 4.59% | 127.44 | 2.6 | 0.17 | 5% | 58.41 | 57.17 |
| PR01- A | DD01* | TANK** | 1.0 | 24 | 0.007 | 0.007 | 10.00 | 178.56 | 1.19 | 1.19 | 1.19 | 12.00 | 250 | 10.00% | 188.05 | 3.8 | 0.05 | 1% | 58.37 | 57.17 |
| PR01 - D & PR03 | TANK** | STMH3*** | 1.0 | 1881 | 0.523 | 0.606 | 10.00 | 178.56 | 93.37 | 108.18 | 108.18 | 1.42 | 250 | 2.11% | 86.44 | 1.8 | 0.01 | 125% | 57.17 | 57.14 |
| | STMH3*** | STMH2**** | 1.0 | 0 | 0.000 | 0.606 | 10.01 | 178.43 | 0.00 | 108.11 | 25.60 | 1.00 | 250 | 1.00% | 59.47 | 1.2 | 0.01 | 43% | 56.95 | 56.94 |
| | STMH2**** | STMH1 | 1.0 | 0 | 0.000 | 0.606 | 10.08 | 177.81 | 0.00 | 107.73 | 25.60 | 5.30 | 250 | 1.13% | 63.27 | 1.3 | 0.07 | 40% | 56.69 | 56.63 |
| DESIGN PARAMETERS Q = 2.78CIA where, Q = Peak flow in L/s A = Drainage area in ha I = Rainfall intensity (mm/hr) C = Runoff coefficient Ottawa IDF Curve IDF Curve Equation (100yr storm) $I = 1735.688/(T+6.014)^{0.82}$ Min. velocity = 0.8 m/s Manning 'n' = 0.013 | | | Designed: Erin Blanchette, EIT | | | PROJECT: 112 Nelson Residential Development | | | | | | | | | | | | | | |
| | | | Checked: Stephen McCaughey, P.Eng. | | | LOCATION: 112 Nelson St., Ottawa, ON | | | | | | | | | | | | | | |
| | | | Dwg. Reference: | | | File Ref.: 211-04788-00 | | Date: July 2021 | | Sheet No. 2 of 3 | | | | | | | | | | |

Note:
 * Deck drains for drainage pipes in underground parking, precise routing by Mechanical Engineer
 ** Underground storage in building footprint includes roof drainage
 *** ICD on STMH3 outlet controlled to 20.8 L/s
 **** Oil Grit Separator

WSP Canada
Storm Sewer Design Sheet

| LOCATION | | | FLOW | | | | | | | | | PIPE | | | | | | MANHOLE | | |
|---|-----------|-----------|---|-----------|----------------|--------------|----------------------|----------------------------------|------------------------|-----------------|----------------------------|--|-----------|-----------|-------------------|-----------------------|---------------------|-----------------|---------------|-----------------|
| Catchment Area | FROM MH | TO MH | Coefficient | Area (m2) | Indiv. 2.78*AC | Cum. 2.78*AC | Time of Conc. (min.) | Rainfall Intensity + 20% (mm.hr) | Indiv. Area Flow (L/s) | Cum. Flow (L/s) | Controlled Cum. Flow (L/s) | Length (m) | Dia. (mm) | Slope (%) | Cap. (Full) (L/s) | Velocity (Full) (m/s) | Time of flow (min.) | Ratio (Q/Qfull) | UP INVERT (m) | DOWN INVERT (m) |
| PR01- C | DD03* | TANK** | 1.0 | 137 | 0.038 | 0.038 | 10.00 | 214.27 | 8.17 | 8.17 | 8.17 | 54.00 | 250 | 2.17% | 87.53 | 1.8 | 0.50 | 9% | 58.34 | 57.17 |
| PR01- B | DD02* | TANK** | 1.0 | 137 | 0.038 | 0.038 | 10.00 | 214.27 | 8.17 | 8.17 | 8.17 | 27.00 | 250 | 4.59% | 127.44 | 2.6 | 0.17 | 6% | 58.41 | 57.17 |
| PR01- A | DD01* | TANK** | 1.0 | 24 | 0.007 | 0.007 | 10.00 | 214.27 | 1.43 | 1.43 | 1.43 | 12.00 | 250 | 10.00% | 188.05 | 3.8 | 0.05 | 1% | 58.37 | 57.17 |
| PR01 - D & PR03 | TANK** | STMH3*** | 1.0 | 1881 | 0.523 | 0.606 | 10.00 | 214.27 | 112.05 | 129.82 | 129.82 | 1.42 | 250 | 2.11% | 86.44 | 1.8 | 0.01 | 150% | 57.17 | 57.14 |
| | STMH3*** | STMH2**** | 1.0 | 0 | 0.000 | 0.606 | 10.01 | 214.12 | 0.00 | 129.73 | 25.60 | 1.00 | 250 | 1.00% | 59.47 | 1.2 | 0.01 | 43% | 56.95 | 56.94 |
| | STMH2**** | STMH1 | 1.0 | 0 | 0.000 | 0.606 | 10.08 | 213.37 | 0.00 | 129.28 | 25.60 | 5.30 | 250 | 1.13% | 63.27 | 1.3 | 0.07 | 40% | 56.69 | 56.63 |
| DESIGN PARAMETERS | | | Designed: | | | | | | | | | PROJECT: | | | | | | | | |
| Q = 2.78CIA where, Q = Peak flow in L/s A = Drainage area in ha I = Rainfall intensity (mm/hr) C = Runoff coefficient | | | Ottawa IDF Curve IDF Curve Equation (100yr storm) $I = 1735.688/(T+6.014)^{0.82}$ Min. velocity = 0.8 m/s Manning 'n' = 0.013 | | | | | | | | | Erin Blanchette, EIT 112 Nelson Residential Development | | | | | | | | |
| | | | Checked: | | | | | | | | | LOCATION: | | | | | | | | |
| | | | Stephen McCaughey, P.Eng. | | | | | | | | | 112 Nelson St., Ottawa, ON | | | | | | | | |
| | | | Dwg. Reference: | | | | | | File Ref.: | | | Date: | | | Sheet No. | | | | | |
| | | | | | | | | | 211-04788-00 | | | July 2021 | | | 3 of 3 | | | | | |

Note:
 * Deck drains for drainage pipes in underground parking, precise routing by Mechanical Engineer
 ** Underground storage in building footprint includes roof drainage
 *** ICD on STMH3 outlet controlled to 25.6 L/s
 **** Oil Grit Separator

E CORRESPONDENCES

Pre-Application Consultation Meeting Minutes

112 Nelson

PC2020-0262

October 22, 2020, Videoconference Call

Applicant Team (invitees)

- Paul Black, Fotenn
- Aly Damji, Forum Equity
- Hoa Nguyen, Forum Equity
- Jeremy Silburt, Smart Living Properties
- Dany Elsalibi, Smart Living Properties
- Bob Woodman, Woodman Architects
- Juan Gomez, Woodman Architects
- Christopher Gordon, CHG Transportation
- Andrew Harte, CHG Transportation

Lowertown Community Association

- Warren Waters

City of Ottawa

- Andrew McCreight, Planner, File Lead
 - John Wu, Engineering
 - Christopher Moise, Urban Design
 - Wally Dubyk, Transportation
-

Subject: 112 Nelson Street

Opening & attendee introduction

- Introduction of meeting attendees
- Andrew explained NDA process with Lowertown CA.

Project Overview (applicant team)

Intro to team and partnership

- Presentation and Intro made to forum equity and smart living properties partnership and business approach.
 - **Note:** Staff request a copy of the presentation made during the meeting.
- Development focuses on millennial form housing.

- Forum has worked on various Ottawa projects, as well as student residents in Manitoba, and many rental projects.
- Proposed development is intended for Rental.
- Location is priority for our projects, and target active transit tenants
- All inclusive rental package, and tenant mix
- Fully furnished suites etc.
- Rental affordability with efficient units and location with amenity proximity etc. Tenants will be enjoying the outside of the unit with quality amenities in the building and surrounding neighbourhood

Proposal Overview

- Goal of project is to try to design the building to meet zoning as close as possible.
- The built form and envelope is intended to meet previous Schedule as much as possible.
- Parking complies with plans submitted, but there will likely be a request to further reduce parking requirement.
- Biggest difference from previous rezoning concept (and approval) is the building is now 10-storeys, but fits within previous zoning height.
- Architect description
 - Previous proposal was 150+ condo type units. We are looking at very different market (rental) and creating flexible use spaces.
 - Looking to maintain 10% as 3-bedroom units.
 - Fit within the envelope but not necessarily maximizing.
 - Meeting envelope and setbacks
 - Change of use to high-rise but within permitted form.
 - Residential building
 - Amenity – interior and roof-top. Meet calc. requirements
 - 342 keys (units)
 - This is not specifically designed for student. May include student but looking for young professionals etc.

Preliminary Comments from Related Discipline

Andrew McCreight – File Lead

- The Pre-con Form notes Site Plan but based on the discussion it is clear that a Zoning By-law amendment will be required as well.
- Provided a brief overview of the ownership, site history and previous rezoning application (recently approved via Omnibus Report)
- Question was raised about the design if the intent was for the design to result in every “suite” satisfying the definition of a dwelling unit?
 - Answer: Jeremy – all units will be designed to comply as dwelling units.

- Section 37 requirements will require re-negotiation based on the changes to the proposed development.
 - Applicant acknowledged.
- Any submission needs to provide a clear breakdown of the how the proposed GFA compares to the previous rezoning concept.
 - Planning Rationale to include a section of S. 37. See guidelines.
- The assessment and rationale that the built form and envelopment is consistent with the previous approval, except going to 10-storeys, is not accurate. Comparing this proposal to the approved Zoning Schedule highlights some concerning inconsistencies, such as the height (storeys), but also some of the stepbacks have not been incorporated.
- Staff fully expect that building heights (including storeys), setbacks and stepbacks previously established and approved through the Omnibus Report will be maintained.
- The design seems to intentionally maximize the number of units in this development and in a manner that is not desirable.
 - Floor heights seem to be squeezed to the minimum code requirement and paired with exceptionally small units
 - The concept incorporates dwelling units within the P1 garage level. This seems unnecessary and may contribute to a discussion around overdevelopment.
- Visitor parking – the zoning provision specific to minimum of 6 spaces was based on the previous concept. More visitor parking should be provided and relate the number of units.
- Waste Room access does not appear sufficient, at least for City collection. Consider the number of units proposed and design the waste/recycling room accordingly.
- Part of the business plan presentation spoke to tenants having excellent access to amenity outside of their unit. With the proposal development concept, which raises concern about the number and type of units proposed, it will be very important to see proper indoor Amenity Areas for ease of access by all tenants.
- Bicycle parking – the desire to achieve a 1:1 ratio is supported but further the design and location of bike parking for ease of use. Bicycle rooms within parking garage may work, but they need to be easy to access with a bike. Prefer to see a ground floor facility. Also look at option for visitor bicycle parking.
- More information will be required on affordable housing relative to the previous S. 37 items.
- Discuss this proposal with the Ward Councillor as he may have other ideas in mind for S. 37, and for the proposed development in general.
- Further pre-consultation is strongly recommended in response to comments received. The current proposal raises many concerns, and with the high-level issues addressed, staff can provide more detailed feedback.

Christopher – Urban Design

- Convincing business plan
 - Location
 - Quality design with efficient spaces, shared amenities, quality finishes etc.
 - Convenience
 - Shortage of rental housing, proforma, small units, amenities.
- However, while the strong business plan discussion is appreciated, but the missing piece is how the building itself contributes to the immediate community and the design of the City.

Specific Areas of Concern:

- The project is ten storeys and triggers the tall building guidelines and this proposal doesn't come close to meeting the max 750m² floorplate. Bringing this proposal down to nine storeys would avoid that.
- Would like further analysis of building relationship with surrounding context, especially planned function. Provide visualization.
- It might be helpful to see how this proposal relates to its surrounding properties within their planned context. Perhaps some modelling with ghosted blocks that illustrate what could be built around it to investigate side yard conditions.
- How the building presents a street scale and how the design relates to the context of Nelson.
- The massing and materiality of the design seems akin to a campus building on a green field site, so additional investigation would be valuable to recognize the diverse local context.
- No balconies which are a common way to visually break up a long facade and provide an architectural element that signifies a residential use.
- Concern about livability of below grade units. More elaboration of this approach needs to be provided (perhaps with a section).
- Quality of life of the building needs further description from a built form and design perspective. Not sure the business plan idea has translated into this form. This is not a convincing proposal.
- The P1 level units are very concerning.
- There is no landscaping plan provided yet and this will be a critical component of the success of the design and how it stitches itself into the context of the block as a whole.

Other

- This building will be highly visible in the middle of a downtown block, and although it does not sit within one of the City's Design Priority Areas we

recommend the proposal consider attending an Informal visit (prior to a full submission and is not a public meeting), with the City's UDRP to further discuss and evaluate various scenarios of development for the whole site;

- A Design Brief is a required submittal for all site plan applications. Please see the Design Brief Terms of Reference provided for details and consult the City's website for details regarding the UDRP schedule (if applicable).

John Wu - Engineering

- Major concern is to check sanitary capacity.
- Storm and water should not cause any concerns.
- Noise study will be required due to proximity of Rideau and King Edward.
- Jeremy – similar number of occupants from previous proposal, so capacity should not be an issue.

Wally - Transportation

- The remaining steps (Forecasting & Analysis) of the TIA report to be submitted during the Site Plan application. All other Transportation comments have been noted by the consultant and should be addressed on the site plan.
- Applicant
 - We will be further discussing additional transit demand strategies with staff such as car share, e-bike spaces etc.

Preliminary Comments from Community Association Representatives:

Warren is currently the only member from Lowertown Community Association who has signed the non-disclosure agreement.

- Welcome to the neighbourhood. There is an affordability emergency.
- We need more family housing.
- We do welcome student and young professions.
- You will receive concerns about this being a student bunkhouse.
- Beautiful neighbourhood and I recommend you get to know your neighbours and get to know the people who are affected by this development.
- City – don't hold up good housing projects.
- Investment with rental real estate with high turnover results in higher rents and increasement. Don't make this your business approach.
- Increase stress on infrastructure and more property taxes etc.

Note: there was a response discussion about Development Charges, and application process

Next Steps:

- Warren has signed non-disclosure agreement. If the applicant decides to go to the public, please email Warren to break this agreement. Andrew must be copied on such an e-mail if this occurs.
- Recommend consulting the Ward Councillor, as well as Lowertown Community Association.
- The plans and studies list will be provided for submission requirements.

McCaughey, Stephen

From: Wu, John <John.Wu@ottawa.ca>
Sent: Tuesday, April 27, 2021 10:56 AM
To: McCaughey, Stephen
Subject: RE: 112 Nelson St. - Design Criteria from Pre-consultation
Attachments: 112 Nelson Street April 2021.pdf

******The following information may be passed on to the consultant, but do NOT forward this e-mail directly.******

Hi, Stephen:

Please refer to Guidelines and Technical bulletin ISDTB-2014-02 concerning basic day demands greater than 0.5 L/s.

The following are boundary conditions, HGL, for hydraulic analysis at 112 Nelson (zone 1W) assumed to be connected to the 203mm on Nelson Street (see attached PDF for location).

Minimum HGL = 106.5m

Maximum HGL = 115.0m

Max Day + Fire Flow (200 L/s) = 98.8m

These are for current conditions and are based on computer model simulation.

Disclaimer: The boundary condition information is based on current operation of the city water distribution system. The computer model simulation is based on the best information available at the time. The operation of the water distribution system can change on a regular basis, resulting in a variation in boundary conditions. The physical properties of watermains deteriorate over time, as such must be assumed in the absence of actual field test data. The variation in physical watermain properties can therefore alter the results of the computer model simulation.

We can't provide any information about sanitary sewer capacity in this area. We only provide this information after the application comes in, and circulation is done.

Thanks.

John

From: McCaughey, Stephen <Stephen.Mccaughey@wsp.com>
Sent: April 16, 2021 3:57 PM
To: Wu, John <John.Wu@ottawa.ca>
Cc: Blanchette, Erin <Erin.Blanchette@wsp.com>
Subject: RE: 112 Nelson St. - Design Criteria from Pre-consultation

CAUTION: This email originated from an External Sender. Please do not click links or open attachments unless you recognize the source.

ATTENTION : Ce courriel provient d'un expéditeur externe. Ne cliquez sur aucun lien et n'ouvrez pas de pièce jointe, excepté si vous connaissez l'expéditeur.

See attached draft water and sanitary demand estimates for 112 Nelson Street. The connection points will be the 200mm watermain and 300mm sanitary sewer on Nelson Street. If you can advise of sewer capacity and water boundary conditions.

Sanitary:

- Average Day Flow: 1.64 L/s
- Peak Flow: 5.63 L/s

Water:

- Average Day Flow: 1.64 L/s
- Max Day Flow: 4.09 L/s
- Peak Hour Flow: 9.00 L/s
- Fire Flow: 200 L/s
 - o Max Day + Fire Flow: 204 L/s

Thank you very much and have a good weekend,

Stephen McCaughey, P.Eng.

T +1 613-690-3955 (Direct)

T +1 613-829-2800 (Office)



From: Wu, John <John.Wu@ottawa.ca>
Sent: Wednesday, April 14, 2021 11:10 AM
To: McCaughey, Stephen <Stephen.McCaughey@wsp.com>
Subject: RE: 112 Nelson St. - Design Criteria from Pre-consultation

Please use C 0.5 , 2 year's storm to restrict up to 100 year's storm on site.

From: McCaughey, Stephen <Stephen.McCaughey@wsp.com>
Sent: April 14, 2021 11:06 AM
To: Wu, John <John.Wu@ottawa.ca>
Cc: Blanchette, Erin <Erin.Blanchette@wsp.com>
Subject: 112 Nelson St. - Design Criteria from Pre-consultation

CAUTION: This email originated from an External Sender. Please do not click links or open attachments unless you recognize the source.

ATTENTION : Ce courriel provient d'un expéditeur externe. Ne cliquez sur aucun lien et n'ouvrez pas de pièce jointe, excepté si vous connaissez l'expéditeur.

I understand you're the engineering contact for this 112 Nelson St. proposed development and possible re-zoning.

We'll be generating the proposed water and sanitary demands shortly but what isn't clear from the pre-consultation minutes is what are the stormwater management requirements for this site development?

Thanks very much,

Stephen McCaughey, P.Eng.

Project Engineer
Municipal Infrastructure



T +1 613-690-3955 (Direct)
T +1 613-829-2800 (Office)

300-2611 Queensview Drive
Ottawa, Ontario
K2B 8K2 Canada

wsp.com

NOTICE: This communication and any attachments ("this message") may contain information which is privileged, confidential, proprietary or otherwise subject to restricted disclosure under applicable law. This message is for the sole use of the intended recipient(s). Any unauthorized use, disclosure, viewing, copying, alteration, dissemination or distribution of, or reliance on, this message is strictly prohibited. If you have received this message in error, or you are not an authorized or intended recipient, please notify the sender immediately by replying to this message, delete this message and all copies from your e-mail system and destroy any printed copies. You are receiving this communication because you are listed as a current WSP contact. Should you have any questions regarding WSP's electronic communications policy, please consult our Anti-Spam Commitment at www.wsp.com/cas. For any concern or if you believe you should not be receiving this message, please forward this message to caslcompliance@wsp.com so that we can promptly address your request. Note that not all messages sent by WSP qualify as commercial electronic messages.

AVIS : Ce message, incluant tout fichier l'accompagnant (« le message »), peut contenir des renseignements ou de l'information privilégiés, confidentiels, propriétaires ou à divulgation restreinte en vertu de la loi. Ce message est destiné à l'usage exclusif du/des destinataire(s) voulu(s). Toute utilisation non permise, divulgation, lecture, reproduction, modification, diffusion ou distribution est interdite. Si vous avez reçu ce message par erreur, ou que vous n'êtes pas un destinataire autorisé ou voulu, veuillez en aviser l'expéditeur immédiatement et détruire le message et toute copie électronique ou imprimée. Vous recevez cette communication car vous faites partie des contacts de WSP. Si vous avez des questions concernant la politique de communications électroniques de WSP, veuillez consulter notre Engagement anti-pourriel au www.wsp.com/lcap. Pour toute question ou si vous croyez que vous ne devriez pas recevoir ce message, prière de le transférer au conformitelcap@wsp.com afin que nous puissions rapidement traiter votre demande. Notez que ce ne sont pas tous les messages transmis par WSP qui constituent des messages électroniques commerciaux.

-LAEHhHHzdJzBITWfa4Hgs7pbK1

This e-mail originates from the City of Ottawa e-mail system. Any distribution, use or copying of this e-mail or the information it contains by other than the intended recipient(s) is unauthorized. Thank you.

Le présent courriel a été expédié par le système de courriels de la Ville d'Ottawa. Toute distribution, utilisation ou reproduction du courriel ou des renseignements qui s'y trouvent par une personne autre que son destinataire prévu est interdite. Je vous remercie de votre collaboration.

This e-mail originates from the City of Ottawa e-mail system. Any distribution, use or copying of this e-mail or the information it contains by other than the intended recipient(s) is unauthorized. Thank you.

Le présent courriel a été expédié par le système de courriels de la Ville d'Ottawa. Toute distribution, utilisation ou reproduction du courriel ou des renseignements qui s'y trouvent par une personne autre que son destinataire prévu est interdite. Je vous remercie de votre collaboration.