

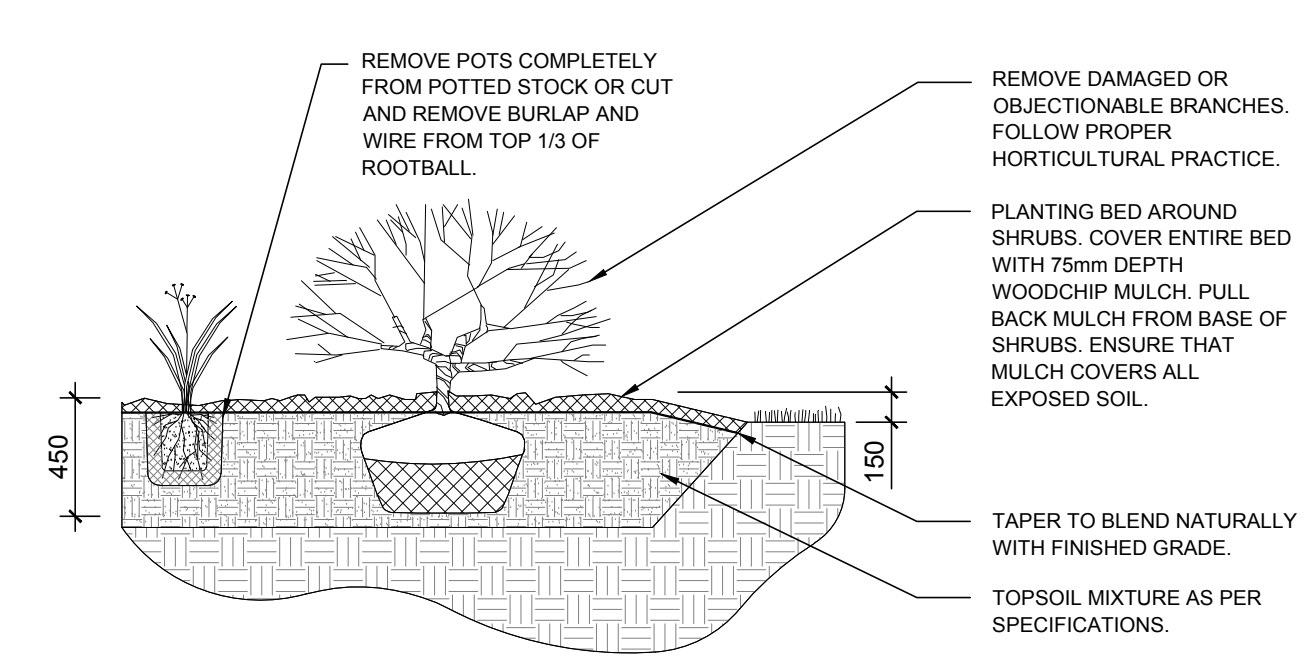
EXISTING TREE LIST						
KEY	qty.	BOTANICAL NAME	COMMON NAME	SIZE	CONDITION	REMARKS
TREES						
AG	4	Acer ginnala	Amur Maple	100-150mm DBH	FAIR-GOOD	To be removed
AN	6	Acer negundo	Manitoba Maple	150-600mm DBH	FAIR-GOOD	To be removed
GT	1	Gleditsia triacanthos	Honey Locust	350mm DBH	GOOD	To remain
PN	5	Pinus nigra	Austrian Pine	200-400mm	FAIR-GOOD	To remain
UP	12	Ulmus pumila	Siberian Elm	100-250mm DBH	DEAD-GOOD	To be removed

* DENOTES NUMEROUS

PROPOSED PLANT LIST						
KEY	qty.	BOTANICAL NAME	COMMON NAME	SIZE	CONDITION	REMARKS
SHRUBS & ORNAMENTAL GRASSES						
HM	8	Plantum virgatum 'Heavy Metal'	Heavy Metal Switch Grass	250mm pot	Potted	800 mm o.c.
RR	114	Rosa rugosa	Rugosa Rose	800mm ht.	Potted	800 mm o.c.

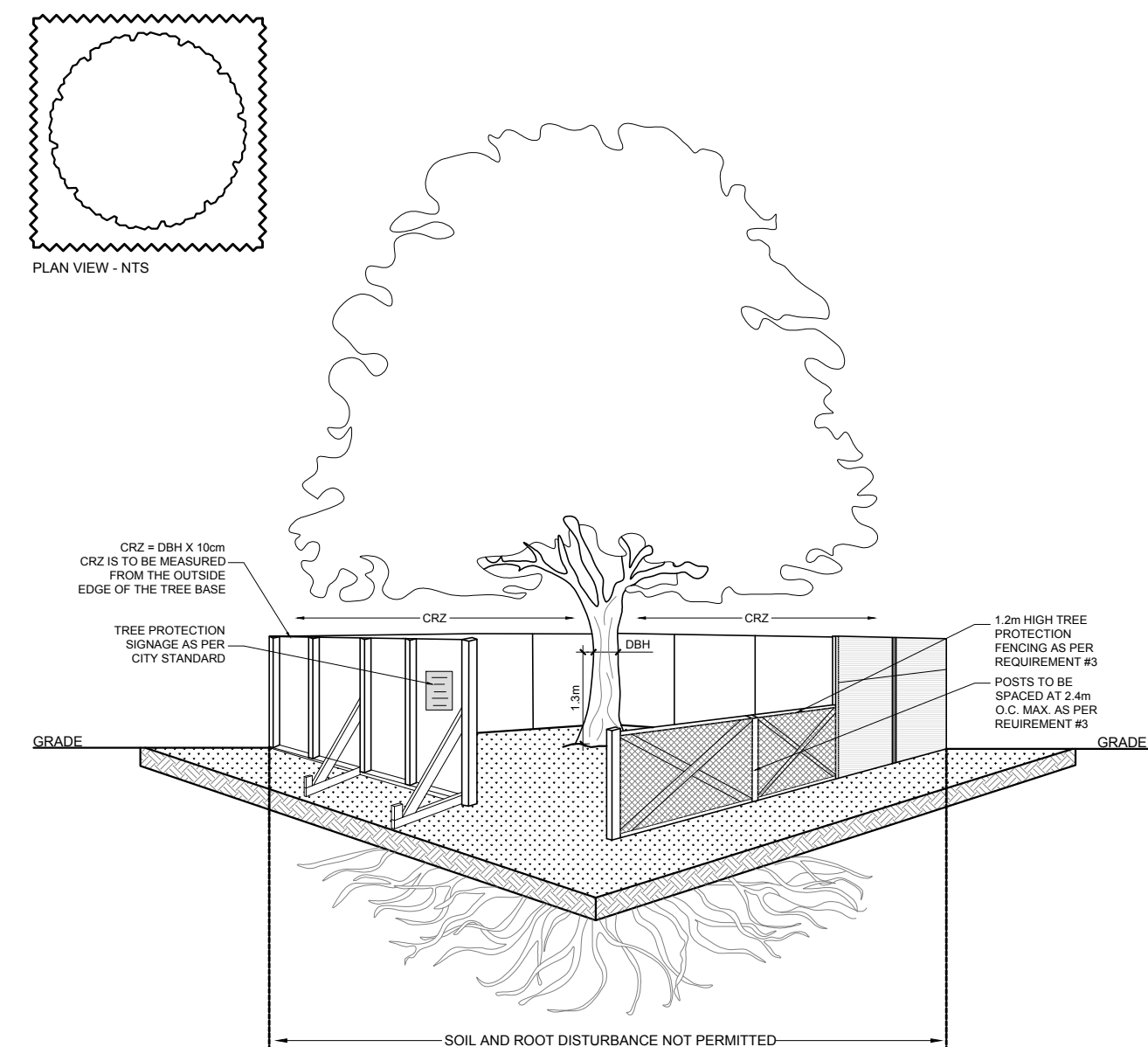
GENERAL NOTES:

- It is the responsibility of the appropriate contractor or official to report any errors, omissions or discrepancies on this plan with actual site conditions to the Landscape Architect before proceeding with construction.
- The contractor is to notify all utility companies and authorities prior to any excavation and ascertain locations of underground services.
- The contractor is to reinstate all areas and items damaged as a result of construction activity.
- The contractor is to comply with all pertinent codes and by-laws.
- The contractor is to maintain a positive surface run-off throughout the entire construction period.
- The Landscape Architect is not responsible for subsurface conditions.
- The contractor is to identify all existing trees to remain on site with the Landscape Architect prior to construction.
- The contractor is to stake the proposed location of all plant material in conjunction with the Landscape Architect prior to excavation.
- Minimum distances for selected deciduous trees are as follows:
 - Building Foundations 7.5m
 - Sidewalks 1.5m
 - Public Streets 2.5m
 - Underground Infrastructure 2.0m
- All trees within 1m of underground utility trenches are to be excavated by hand.
- Remove all protective wrapping from tree trunks after installation.
- Staking of trees shall only be performed if necessary.
- Ensure that mulch is pulled back a min. distance of 75mm from base of tree trunk.



2 SHRUB AND ORNAMENTAL GRASS PLANTING

L1 SCALE: NTS



TREE PROTECTION REQUIREMENTS:

- PRIOR TO ANY WORK ACTIVITY WITHIN THE CRITICAL ROOT ZONE (CRZ + 10x DIAMETER) OF A TREE, TREE PROTECTION FENCING MUST BE INSTALLED SURROUNDING THE CRITICAL ROOT ZONE AND REMAIN IN PLACE UNTIL THE WORK IS COMPLETE.
 - DO NOT PLACE ANY MATERIAL OR EQUIPMENT INCLUDING OUTHOUSES.
 - DO NOT ATTACH ANY SIGNS, NOTICES OR POSTERS TO ANY TREE.
 - DO NOT RAISE OR LOWER THE EXISTING GRADE.
 - TUNNEL OR BORE WHEN DIGGING.
 - DO NOT DAMAGE THE ROOT SYSTEM, TRUNK, OR BRANCHES OF ANY TREE.
 - ENSURE THAT EXHAUST FUMES FROM ALL EQUIPMENT ARE NOT DIRECTED TOWARD ANY TREE CANOPY.
 - DO NOT EXTEND HARD SURFACE OR SIGNIFICANTLY CHANGE LANDSCAPING
- UNLESS PLANS ARE APPROVED BY CITY FORESTRY STAFF, FOR WORK WITHIN THE CRZ:
 - DO NOT RAISE OR LOWER THE EXISTING GRADE.
 - DO NOT PLACE ANY MATERIAL OR EQUIPMENT INCLUDING OUTHOUSES.
 - DO NOT ATTACH ANY SIGNS, NOTICES OR POSTERS TO ANY TREE.
 - DO NOT RAISE OR LOWER THE EXISTING GRADE.
 - TUNNEL OR BORE WHEN DIGGING.
 - DO NOT DAMAGE THE ROOT SYSTEM, TRUNK, OR BRANCHES OF ANY TREE.
 - ENSURE THAT EXHAUST FUMES FROM ALL EQUIPMENT ARE NOT DIRECTED TOWARD ANY TREE CANOPY.
 - DO NOT EXTEND HARD SURFACE OR SIGNIFICANTLY CHANGE LANDSCAPING
- TREE PROTECTION FENCING MUST BE AT LEAST 1.2m IN HEIGHT, AND BE CONSTRUCTED OF RIGID OR FRAMED MATERIALS (E.G. MODULAR STEEL/PLYWOOD HEADING, OR SNOW FENCE ON A 2"x4" WOOD FRAME) WITH POSTS 2.4m APART, SUCH THAT THE FENCE LOCATION CANNOT BE ALTERED. ALL SUPPORTS AND BRACKETS MUST BE PLACED OUTSIDE OF THE CRZ, AND INSTALLATION MUST MINIMIZE DAMAGE TO EXISTING ROOTS. (SEE DETAILS)
- IF THE FENCED TREE PROTECTION AREA MUST BE REDUCED TO FACILITATE CONSTRUCTION, MITIGATION MEASURES MUST BE PRESCRIBED BY AN ARBORIST AND APPROVED BY CITY FORESTRY STAFF. THESE MAY INCLUDE THE PLACEMENT OF PLYWOOD, WOOD CHIPS OR STEEL PLATING OVER THE ROOTS FOR PROTECTION OR THE PROPER PRUNING AND CARE OF ROOTS WHERE ENCOUNTERED.

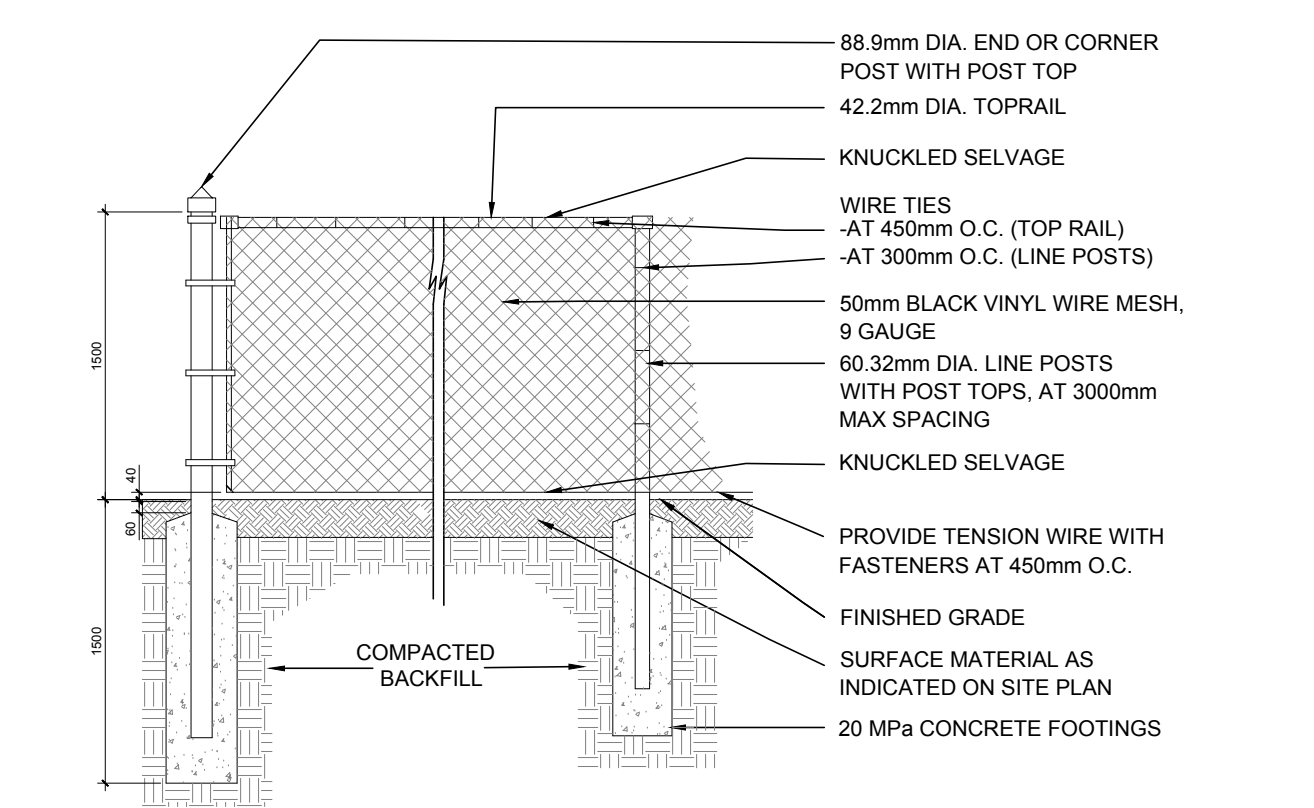
BY-LAWS:

ALL CITY-OWNED TREES ARE PROTECTED UNDER THE MUNICIPAL TREES AND NATURAL AREAS PROTECTION BY-LAW (2006-279), WITHIN THE URBAN AREA.

PRIVATELY-OWNED TREES GREATER THAN 50cm IN DIAMETER ON LOTS 1 HECTARE IN SIZE OR LESS, AND TREES GREATER THAN 10cm IN DIAMETER ON LOTS GREATER THAN 1 HECTARE, ARE PROTECTED UNDER THE URBAN TREE CONSERVATION BY-LAW (2009-200).

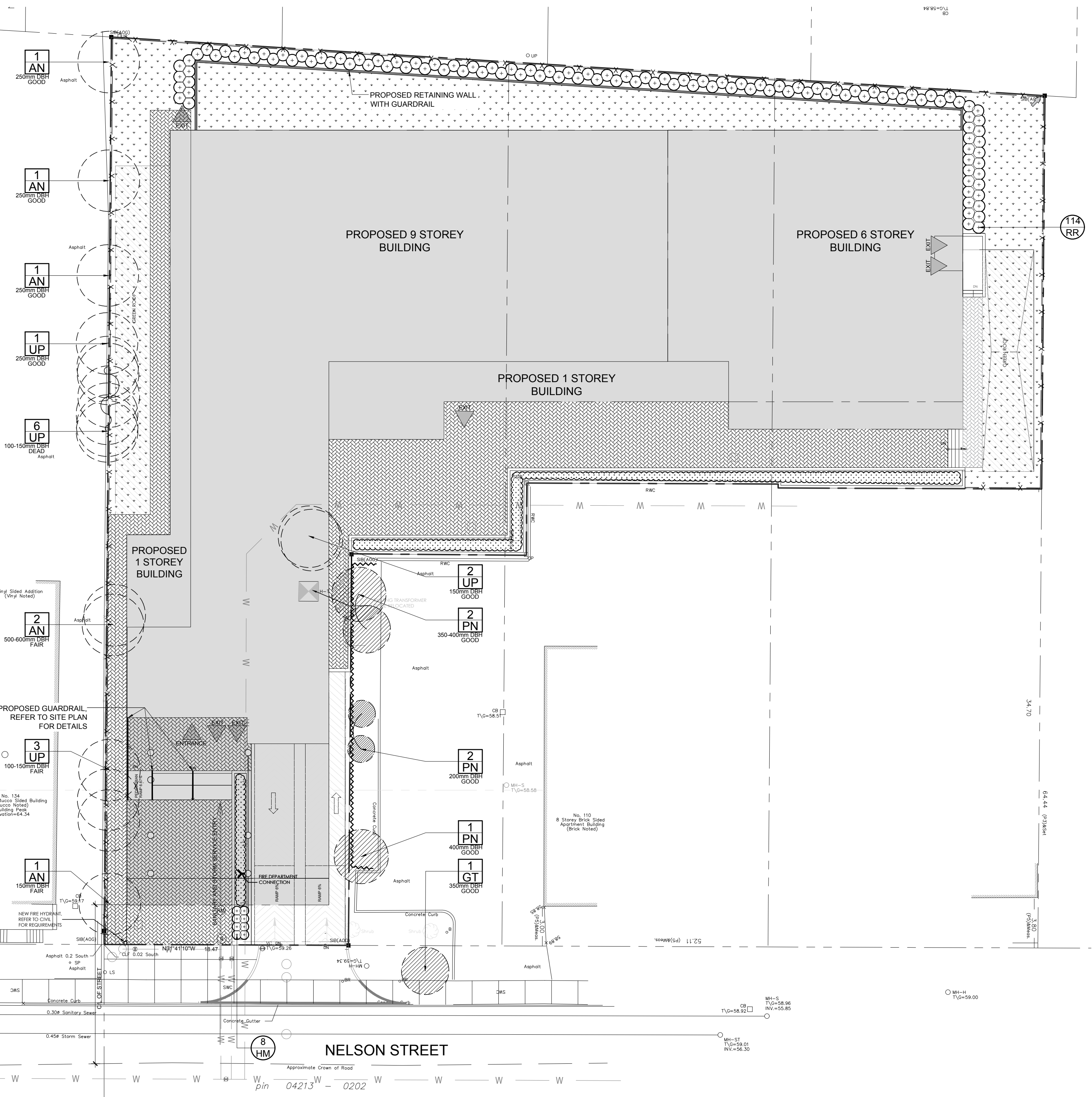
3 TREE PROTECTION FENCE

L1 SCALE: NTS



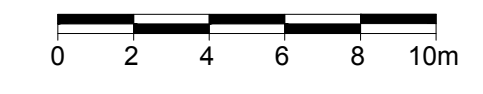
4 1500mm ht. ORNAMENTAL METAL FENCE

L1 SCALE: NTS



1 TREE CONSERVATION REPORT & LANDSCAPE PLAN

L1 SCALE 1:200



CLIENT

SMART LIVING PROPERTIES

CONSULTANTS

ARCHITECTS: **WOODMAN ARCHITECT ASSOCIATES LTD.**

SURVEYORS: ANNIS, O'SULLIVAN, VOLLEBEKK LTD. 14 Concourse Gate, Suite 500, Mississauga, Ont. M2E 2S6. Phone: (613) 727-0850 / Fax: (613) 727-1079

CIVIL ENGINEERS: **wsp**

300-3811 QUEENSWAY DRIVE, OTTAWA, ONTARIO, CANADA, K2B 9K2. TEL: 1-613-629-2000 (FAX: 1-613-629-5299) WWW.WSPGROUP.COM

LEGEND

- EXISTING TREE TO REMAIN
- EXISTING TREE TO BE REMOVED
- PROPOSED PLANTING AS PER OWNER'S DISCRETION
- PROPOSED UNIT CONCRETE PAVERS
- PROPOSED 1500mm ht. BLACK VINYL CHAIN LINK FENCE
- PROPOSED TREE PROTECTION FENCE
- PROPOSED SHRUBS / ORNAMENTAL GRASSES
- PROPOSED SOD

2	ISSUED FOR COMMENTS AND REVIEW	08/27/2021	LC	JL	
1	ISSUED FOR COMMENTS AND REVIEW	08/19/2021	LC	JL	
No.	Issue	Date	MM/DD/YY	DR	CK

JAMES B. LENNOX & ASSOCIATES INC. LANDSCAPE ARCHITECTS
3332 CARLING AVE. OTTAWA, ONTARIO K2H 5A8
Tel. (613) 722-5168 Fax. (1866) 343-3942

PROJECT: 112 NELSON STREET REDEVELOPMENT
112 NELSON STREET, OTTAWA ON

DRAWING: TREE CONSERVATION REPORT & LANDSCAPE PLAN

STAMP: ASSOCIATION OF LANDSCAPE ARCHITECTS OF ONTARIO MEMBER

SCALE: AS SHOWN

START DATE: JULY 2021

PROJECT NO.: 20-SMT-2175

PROJECT NORTH

DRAWING NO.: **L.1**

PLOT SIZE ARCH-D