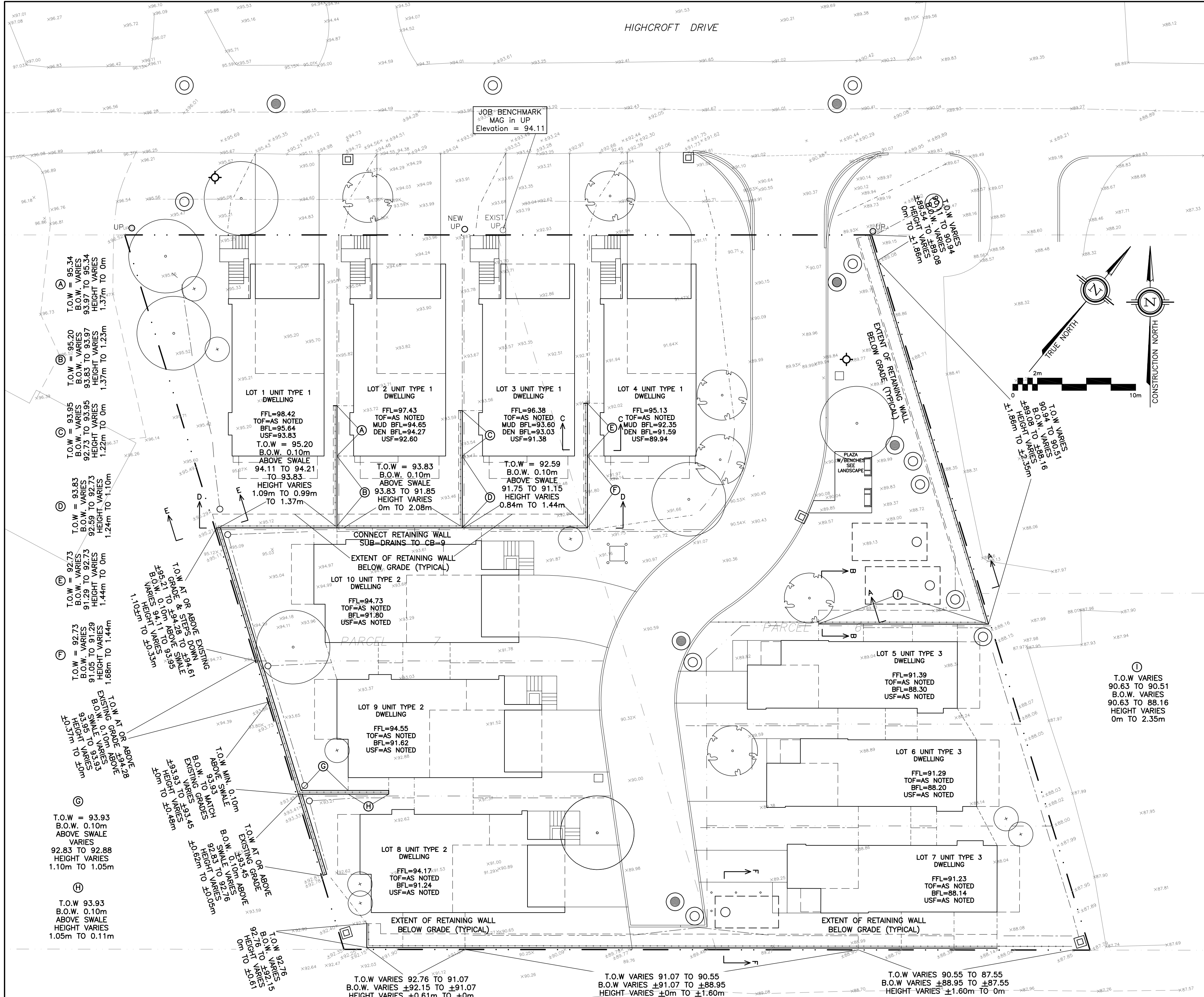
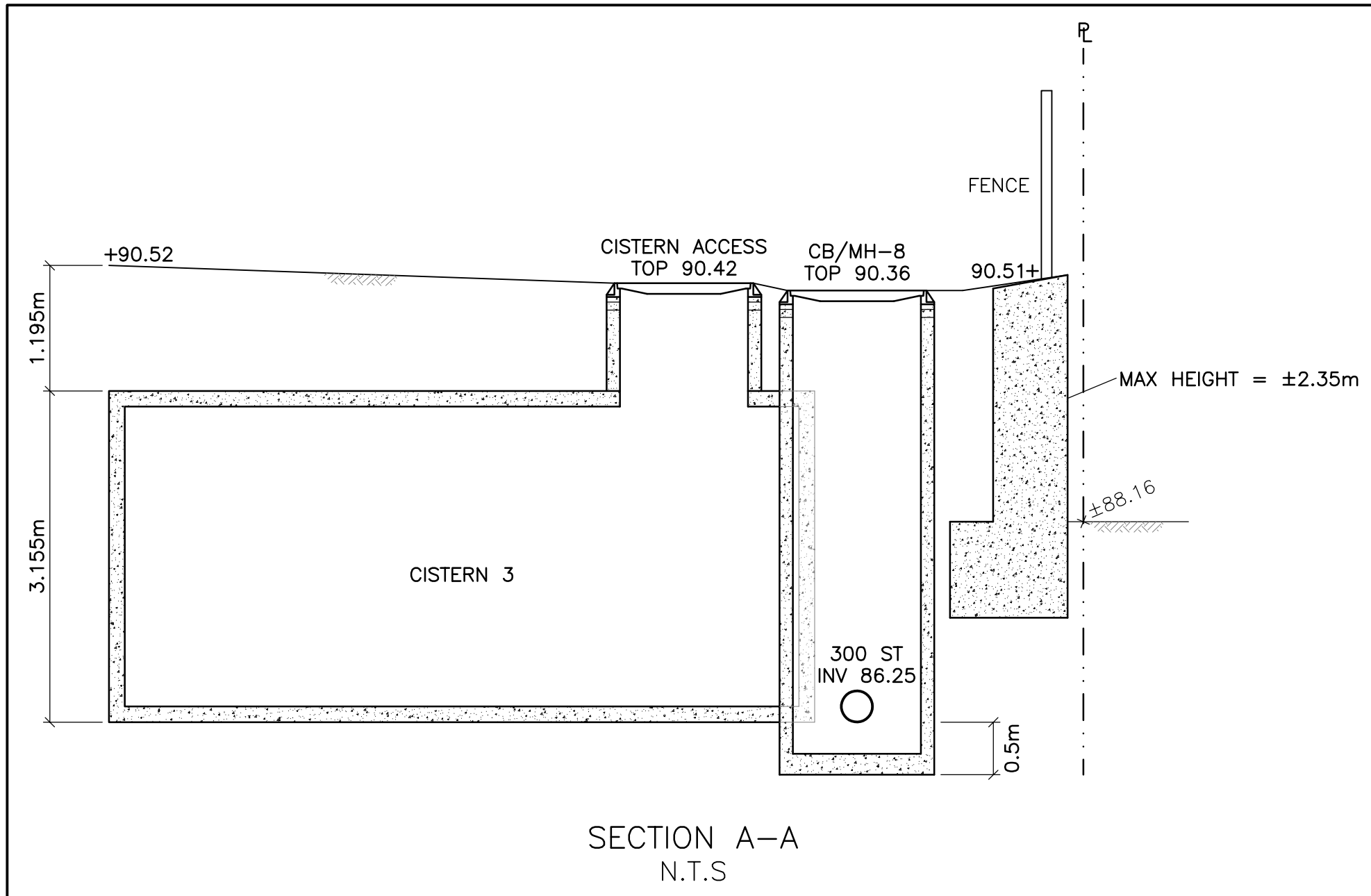
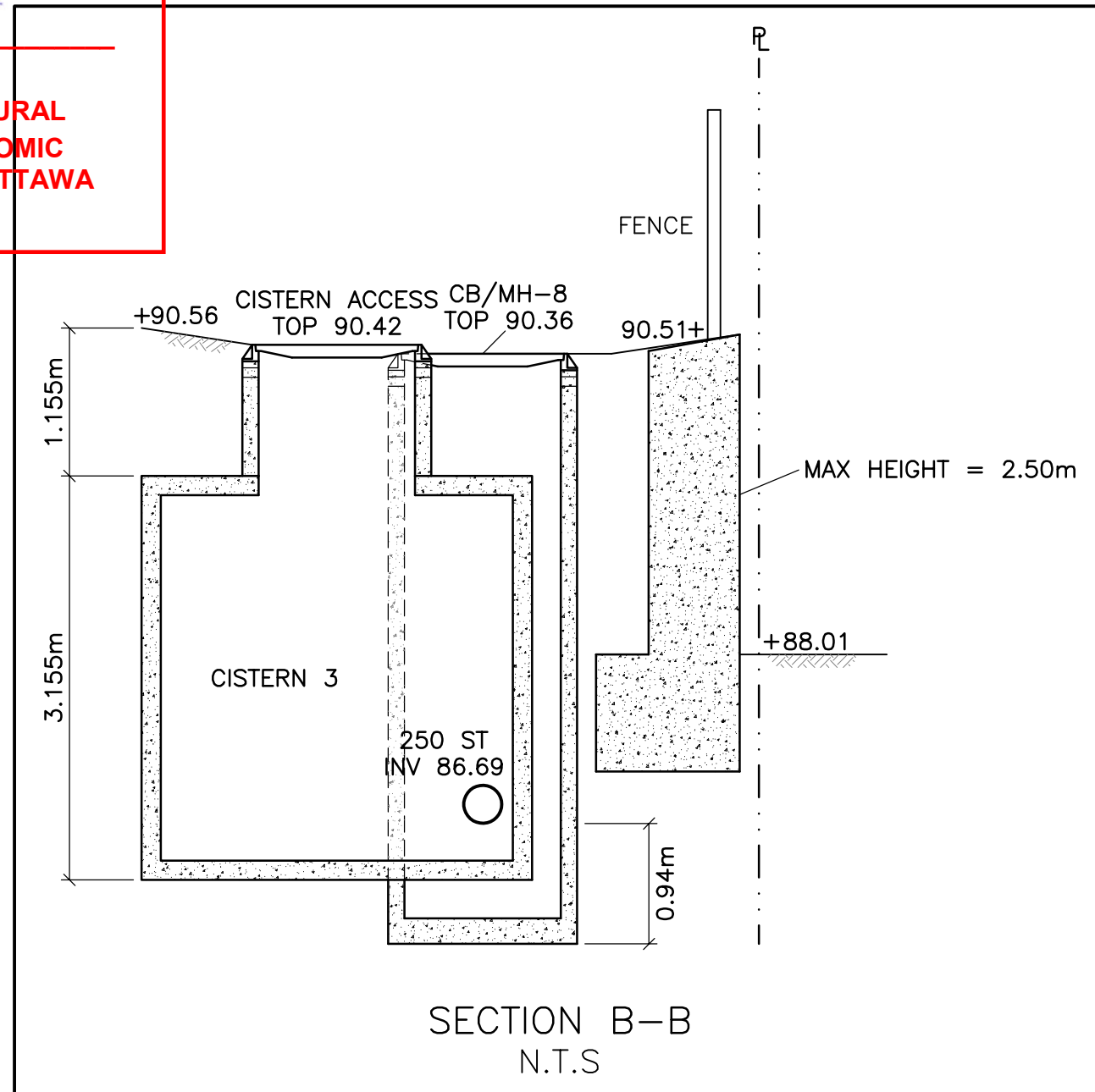
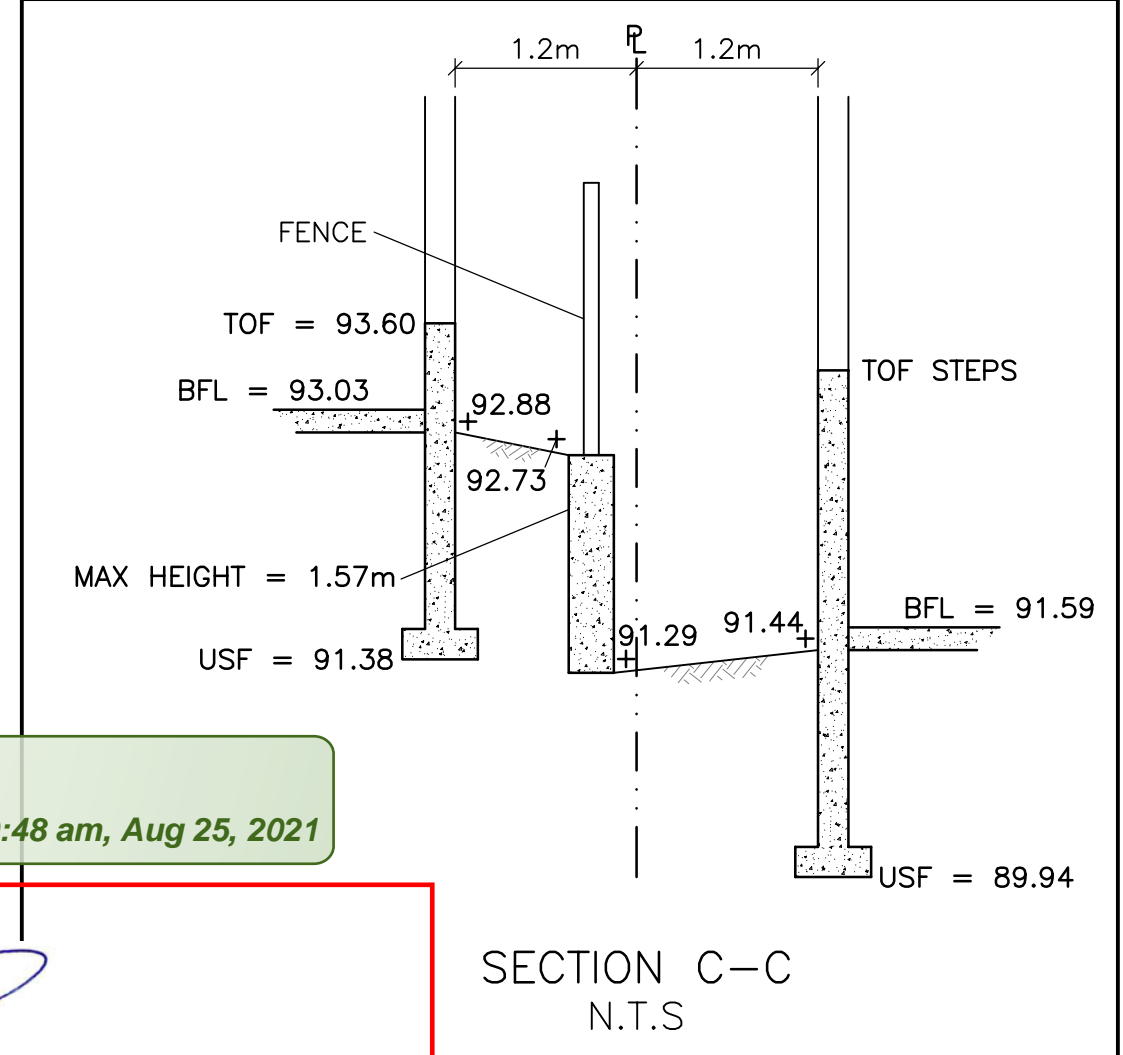
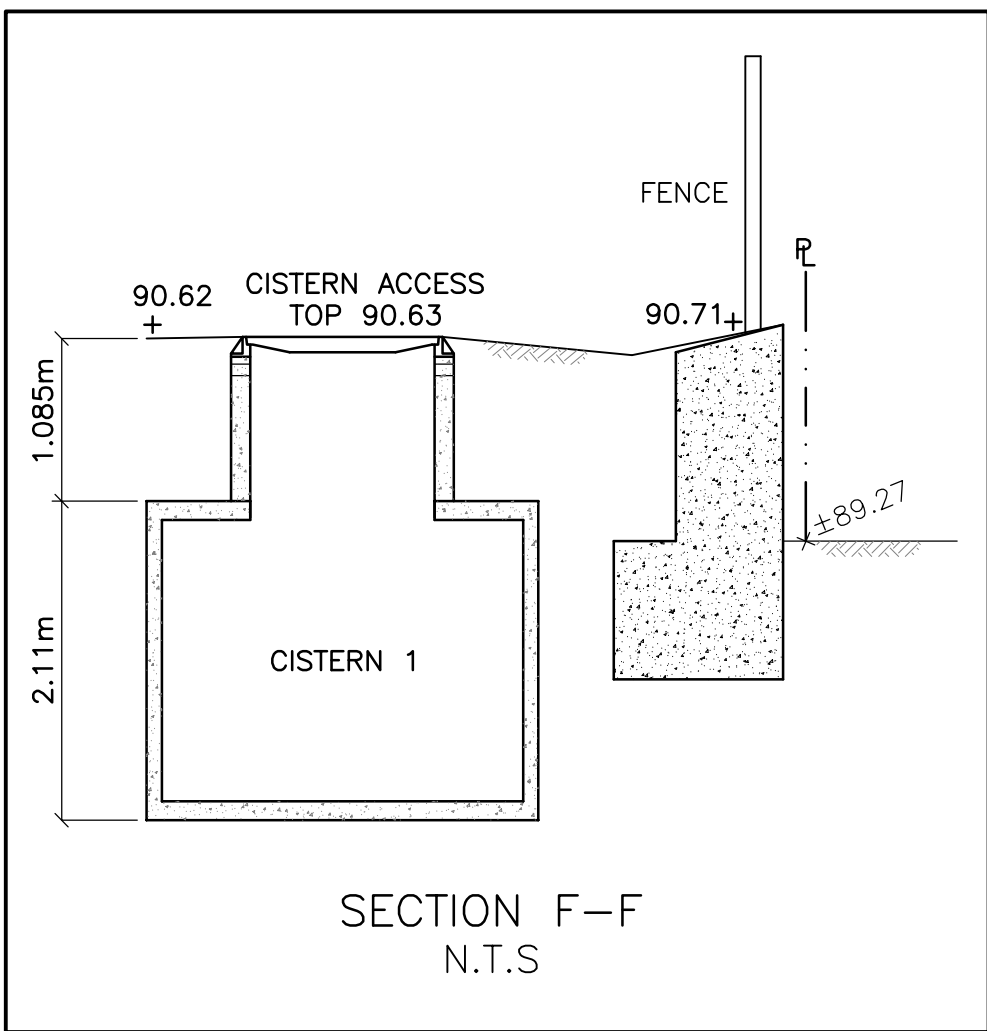
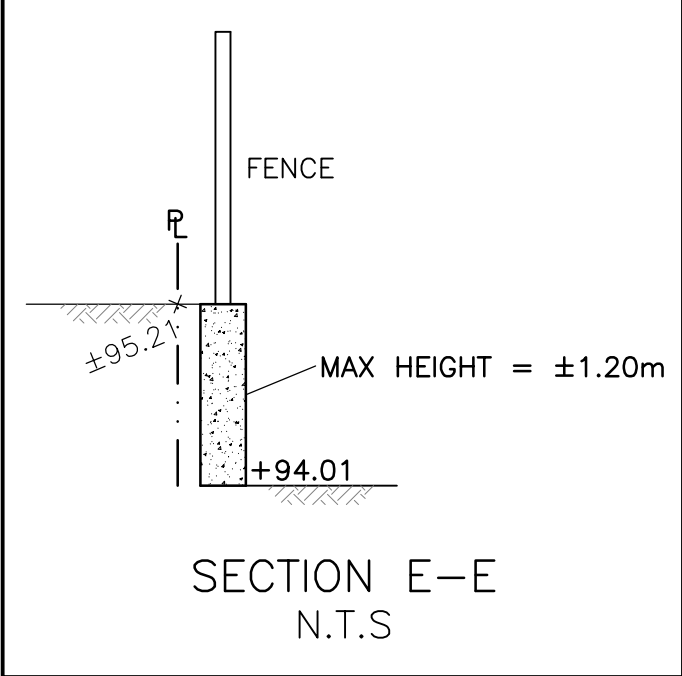
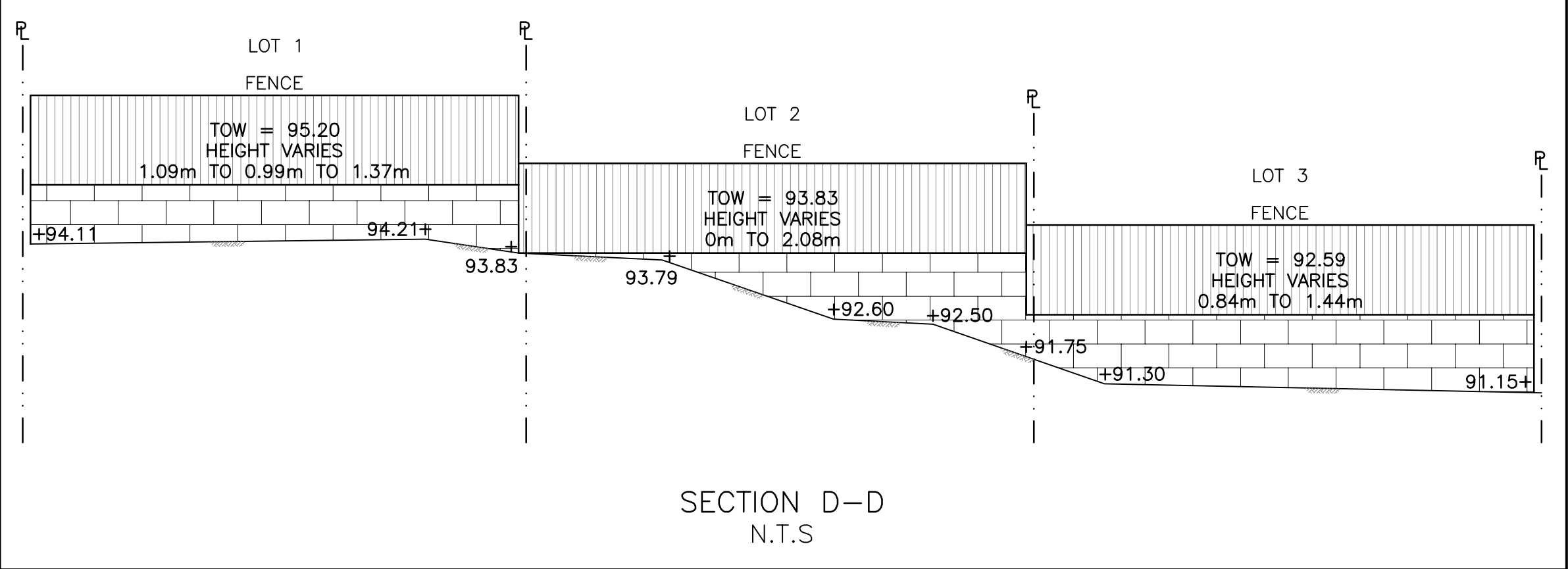


OWNER:
NIVO DEVELOPMENTS INC.
255 MICHAEL COWPLAND DRIVE
OTTAWA, ONTARIO, K2M 0M5
613-224-6200

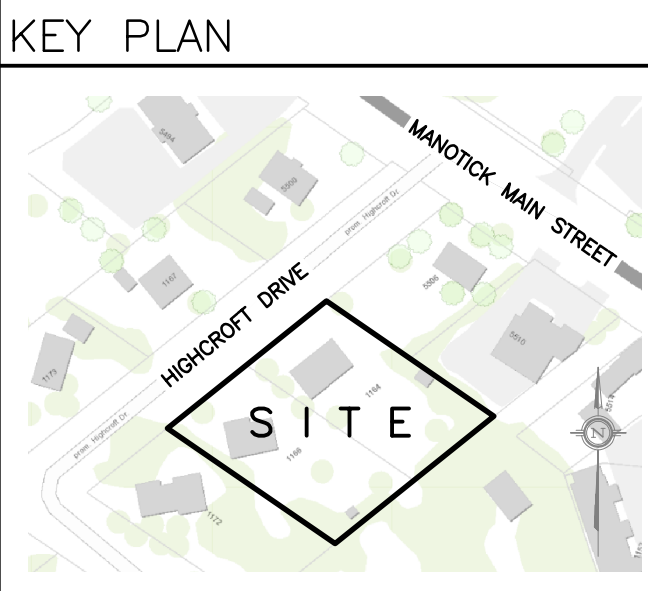
APPROVED
By Adam Brown at 9:48 am, Aug 25, 2021

ADAM BROWN
MANAGER, DEVELOPMENT REVIEW - RURAL
PLANNING, INFRASTRUCTURE & ECONOMIC
DEVELOPMENT DEPARTMENT, CITY OF OTTAWA



DRAWING LEGEND

CB	CATCH BASIN
MH	MANHOLE
CB/MH	CATCH BASIN/MANHOLE
MH	SANITARY MANHOLE
+67.89	EXISTING GRADE ELEVATION
+67.89	PROPOSED GRADE ELEVATION
2%	EXISTING SLOPE OF GRADE
2%	PROPOSED SLOPE OF GRADE
T.O.S	TOP OF SLOPE
B.O.S	BOTTOM OF SLOPE
---	CENTERLINE OF SWALE
---	PROPERTY LINE
---	SILT FENCE BARRIER
D.C	150mm CURB/DEPRESSED CURB
---	LIGHT-DUTY PAVEMENT
---	HEAVY-DUTY PAVEMENT
---	CONCRETE
---	LANDSCAPE
FFL	FIRST FLOOR ELEVATION
TOF	TOP OF FOUNDATION
BFL	BASEMENT FLOOR ELEVATION
USF	UNDERSIDE OF FOOTING



No.	DATE	REVISION
8	MAY 20-21	RE-ISSUED FOR APPROVAL
7	MAR 15-21	RE-ISSUED FOR APPROVAL
6	NOV 16-20	RE-ISSUED FOR APPROVAL
5	JUN 18-20	RE-ISSUED FOR APPROVAL
4	MAY 6-20	ISSUED FOR COORDINATION
3	SEP 27-19	RE-ISSUED FOR APPROVAL
2	AUG 9-19	ISSUED FOR APPROVAL
1	JUN 14-19	PRELIMINARY

D. B. GRAY ENGINEERING INC.
Stormwater Management - Grading & Drainage - Storm & Sanitary Sewers - Watermain
700 Long Point Circle
Ottawa, Ontario
613-425-8044
d.gray@dbgrayengineering.com

Project
PROPOSED
RESIDENTIAL DEVELOPMENT
1164-1166 HIGHCROFT DR.
MANOTICK, ONTARIO

Drawing Title
RETAINING WALLS

Engineer's Seal
D.B. GRAY
17016502
MAY 20-21
PROVINCE OF ONTARIO
NOT VALID UNLESS
SIGNED & DATED

Drawn D.B.G.
Hor. Scale 1:200
Vert. Scale
Date JUN 14-19
Job No. 18035
Drawing No.
C-4
of 14

REFER TO DRAWINGS SK1 TO SK3 BY
LAMPKIN STRUCTURAL SERVICES LTD

REFER TO NOTES & DETAILS
ON DRAWINGS C-7 & C-8