

OWNER:  
 NIVO DEVELOPMENTS INC.  
 255 MICHAEL COWPLAND DRIVE  
 OTTAWA, ONTARIO, K2M 0M5  
 613-224-6200

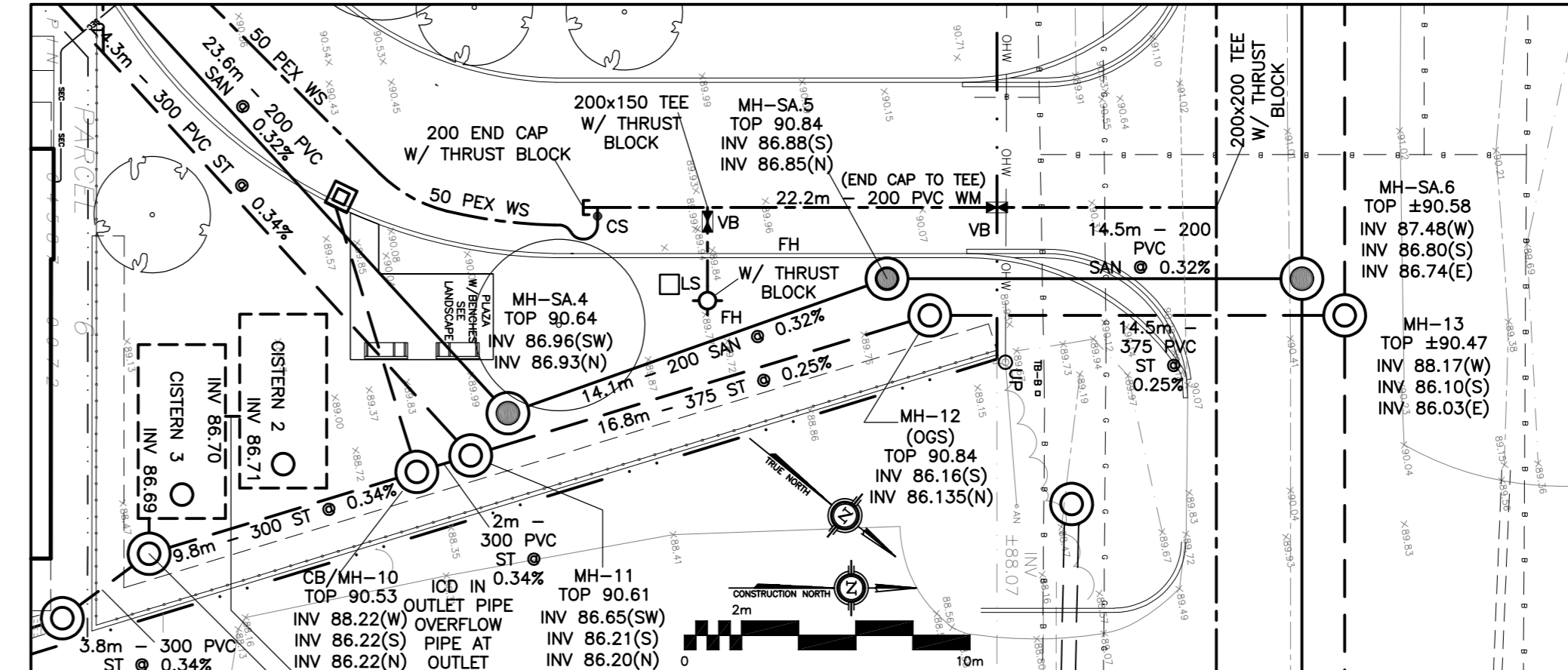
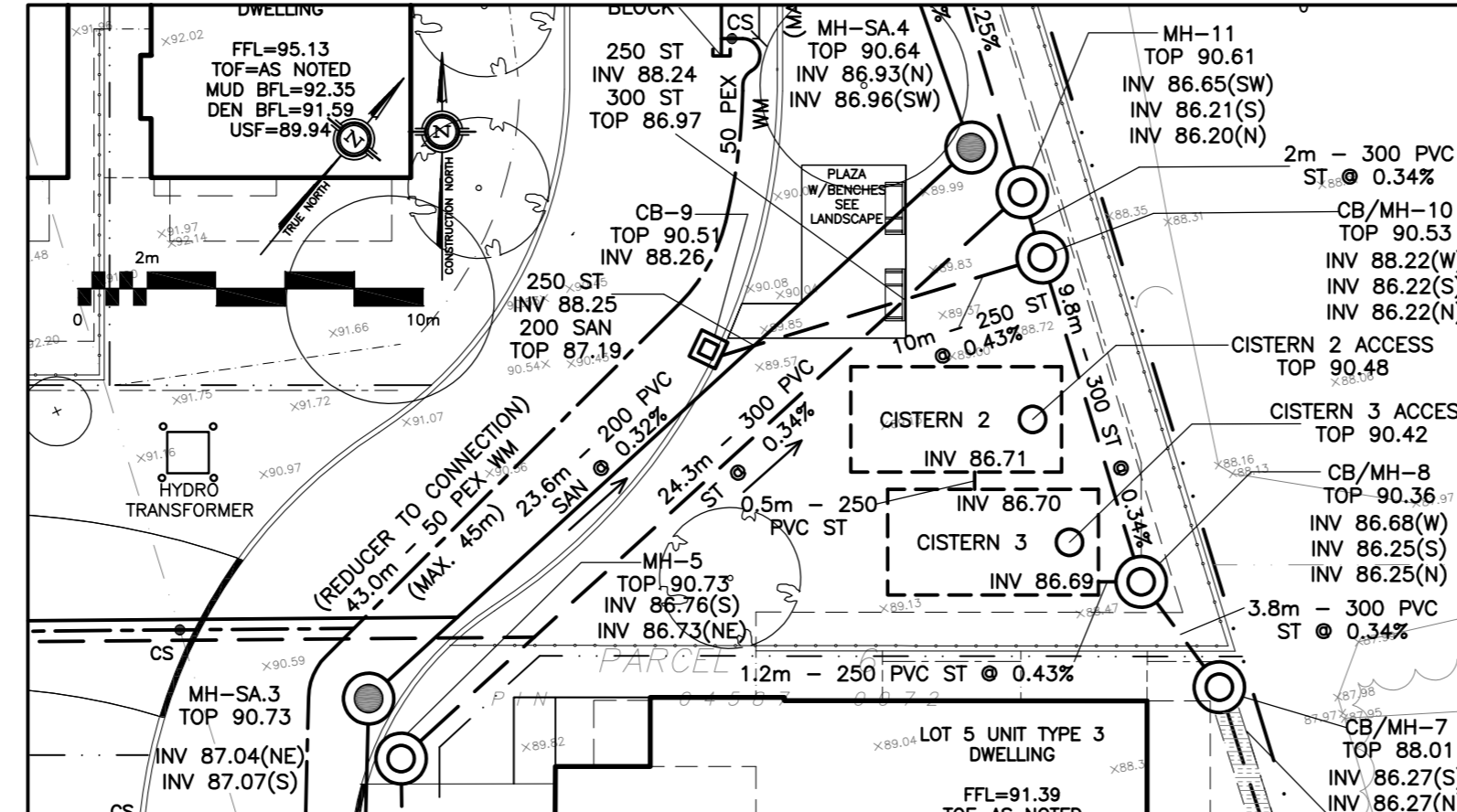
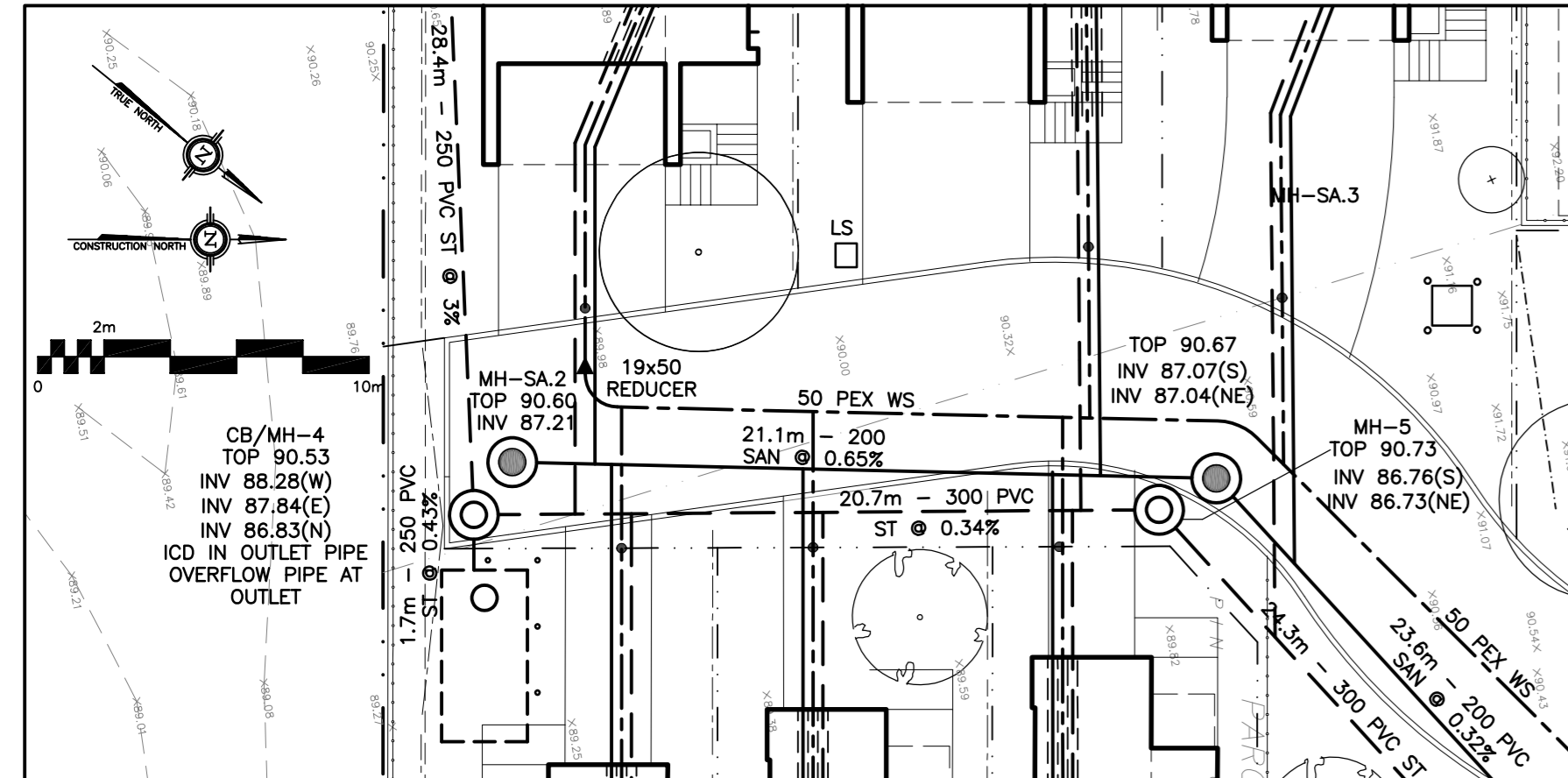
**APPROVED**

By Adam Brown at 9:23 am, Aug 25, 2021



ADAM BROWN  
 MANAGER, DEVELOPMENT REVIEW - RURAL  
 PLANNING, INFRASTRUCTURE & ECONOMIC  
 DEVELOPMENT DEPARTMENT, CITY OF OTTAWA

REFER TO DRAWING C-1 AND NOTES &  
 DETAILS ON DRAWINGS C-7 & C-8



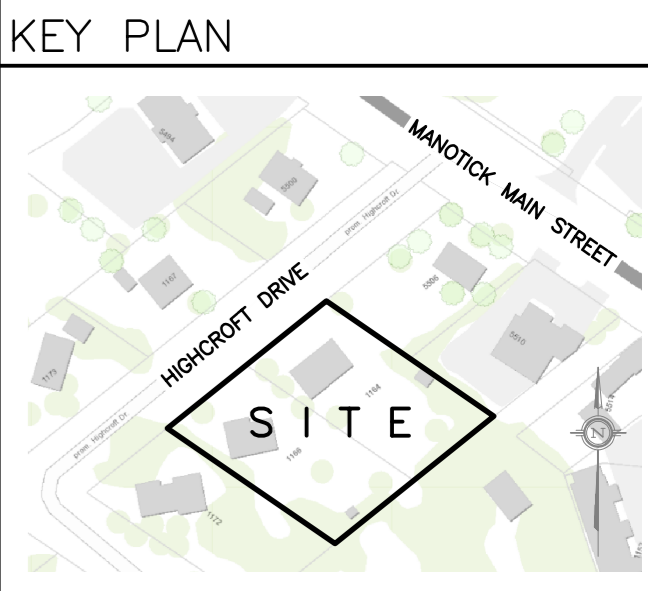
|                      |  |       |       |       |                              |       |                    |  |  |       |
|----------------------|--|-------|-------|-------|------------------------------|-------|--------------------|--|--|-------|
| 91.00                |  |       |       |       |                              |       |                    |  |  | 91.00 |
| 90.00                |  |       |       |       |                              |       |                    |  |  | 90.00 |
| 89.00                |  |       |       |       |                              |       |                    |  |  | 89.00 |
| 88.00                |  |       |       |       |                              |       |                    |  |  | 88.00 |
| 87.00                |  |       |       |       |                              |       |                    |  |  | 87.00 |
| 86.00                |  |       |       |       |                              |       |                    |  |  | 86.00 |
| 85.00                |  |       |       |       |                              |       |                    |  |  | 85.00 |
| 84.00                |  |       |       |       |                              |       |                    |  |  | 84.00 |
| C/L OF ROAD          | 90.64  | 90.66 | 90.68 | 90.72 | 90.74                        | 90.76 | C/L OF ROAD        |  |  |       |
| TOP OF WM            | 88.24  | 88.26 | 88.28 | 88.32 | 88.34                        | 88.36 | TOP OF WM          |  |  |       |
| ST INVERT            | INV 88.28(W)<br>INV 87.84(E)<br>INV 86.83(N) |       |       |       | INV 86.76(S)<br>INV 87.04(N) |       | ST INVERT          |  |  |       |
| SAN INVERT           | INV 87.21                                    |       |       |       | INV 87.07(S)<br>INV 87.04(N) |       | SAN INVERT         |  |  |       |
| STATION FROM CB/MH 4 | B+073.9<br>B+072.5<br>B+070                  |       |       |       | B+051.15<br>B+050            |       | STATION FROM MH.13 |  |  |       |

|                    |  |       |  |  |  |  |                    |  |  |       |
|--------------------|--|-------|--|--|--|--|--------------------|--|--|-------|
| 91.00              |  |       |  |  |  |  |                    |  |  | 91.00 |
| 90.00              |  |       |  |  |  |  |                    |  |  | 90.00 |
| 89.00              |  |       |  |  |  |  |                    |  |  | 89.00 |
| 88.00              |  |       |  |  |  |  |                    |  |  | 88.00 |
| 87.00              |  |       |  |  |  |  |                    |  |  | 87.00 |
| 86.00              |  |       |  |  |  |  |                    |  |  | 86.00 |
| 85.00              |  |       |  |  |  |  |                    |  |  | 85.00 |
| 84.00              |  |       |  |  |  |  |                    |  |  | 84.00 |
| C/L OF ROAD        | 90.76  | 90.82 |  |  |  |  | C/L OF ROAD        |  |  |       |
| TOP OF WM          | 88.36  | 88.22 |  |  |  |  | TOP OF WM          |  |  |       |
| ST INVERT          | INV 86.76(S)<br>INV 87.04(N)<br>INV 86.72(N) | 88.26 |  |  | 86.65(SW)<br>86.21(S)<br>86.20(N)      |  | ST INVERT          |  |  |       |
| SAN INVERT         | INV 87.07(S)<br>INV 87.04(N)                 |       |  |  | INV 86.85(SW)<br>INV 86.93(N)          |  | SAN INVERT         |  |  |       |
| STATION FROM MH 13 | B+050<br>B+046                               |       |  |  | B+031.5<br>B+030.6<br>B+030<br>B+029.3 |  | STATION FROM MH 13 |  |  |       |

|                    |  |       |  |  |  |       |                    |  |  |       |
|--------------------|--|-------|--|--|--|-------|--------------------|--|--|-------|
| 91.00              |  |       |  |  |  |       |                    |  |  | 91.00 |
| 90.00              |  |       |  |  |  |       |                    |  |  | 90.00 |
| 89.00              |  |       |  |  |  |       |                    |  |  | 89.00 |
| 88.00              |  |       |  |  |  |       |                    |  |  | 88.00 |
| 87.00              |  |       |  |  |  |       |                    |  |  | 87.00 |
| 86.00              |  |       |  |  |  |       |                    |  |  | 86.00 |
| 85.00              |  |       |  |  |  |       |                    |  |  | 85.00 |
| 84.00              |  |       |  |  |  |       |                    |  |  | 84.00 |
| C/L OF ROAD        | 90.82  | 90.87 |  |  | 90.72                                    | 90.72 | C/L OF ROAD        |  |  |       |
| TOP OF WM          | 88.22  | 88.31 |  |  | 88.31                                    | 88.31 | TOP OF WM          |  |  |       |
| ST INVERT          | INV 88.28(W)<br>INV 88.22(S)<br>INV 86.83(N) |       |  |  | INV 86.76(S)<br>INV 86.135(N)            |       | ST INVERT          |  |  |       |
| SAN INVERT         | INV 86.96(SW)<br>INV 86.32(N)                |       |  |  | INV 87.07(S)<br>INV 86.74(E)<br>(+064.8) |       | SAN INVERT         |  |  |       |
| STATION FROM MH 13 | B+020<br>B+016.1<br>B+014.4                  |       |  |  | B+001.5<br>B+000.0<br>(+064.8)           |       | STATION FROM MH 13 |  |  |       |

**DRAWING LEGEND**

- CB [ ] CATCH BASIN
- MH ( ) MANHOLE
- CB/MH ( ) CATCH BASIN/MANHOLE
- MH ( ) SANITARY MANHOLE
- SPL --- SPRINGLINE OF PIPE
- INV --- INVERT OF PIPE
- SAN --- SANITARY SEWER
- ST --- STORM SEWER
- WS/WM --- WATER SERVICE/WATERMAIN
- CS --- CURB STOP & STANDPOST
- VB --- VALVE & VALVE BOX
- FH --- FIRE HYDRANT
- M --- WATER METER
- (R) --- REMOTE WATER METER READOUT
- EXISTING GRADE ELEVATION
- PROPERTY LINE
- FFL --- FIRST FLOOR ELEVATION
- TOF --- TOP OF FOUNDATION
- BFL --- BASEMENT FLOOR ELEVATION
- USF --- UNDERSIDE OF FOOTING

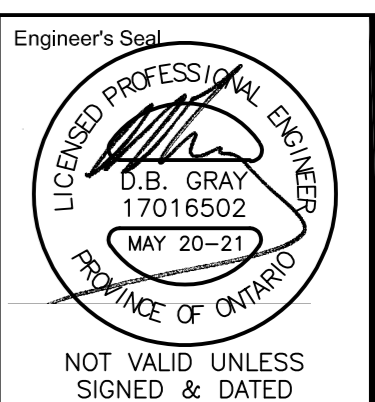


| No. | DATE      | REVISION               |
|-----|-----------|------------------------|
| 7   | MAY 20-21 | RE-ISSUED FOR APPROVAL |
| 6   | MAR 15-21 | RE-ISSUED FOR APPROVAL |
| 5   | NOV 16-20 | RE-ISSUED FOR APPROVAL |
| 4   | JUN 18-20 | RE-ISSUED FOR APPROVAL |
| 3   | SEP 27-19 | RE-ISSUED FOR APPROVAL |
| 2   | AUG 9-19  | ISSUED FOR APPROVAL    |
| 1   | JUN 14-19 | PRELIMINARY            |
| No. | DATE      | REVISION               |

**D. B. GRAY ENGINEERING INC.**  
 Stormwater Management - Grading & Drainage - Storm & Sanitary Sewers - Watermain  
 700 Long Point Circle 613-425-8044  
 Ottawa, Ontario d.gray@dbgrayengineering.com

Project  
**PROPOSED  
 RESIDENTIAL DEVELOPMENT**  
 1164-1166 HIGHCROFT DR.  
 MANOTICK, ONTARIO

Drawing Title  
**PLAN & PROFILE  
 PRIVATE ROAD**

Engineer's Seal  
  
 D.B. GRAY  
 17016502  
 MAY 20-21  
 PROVINCE OF ONTARIO

Drawn D.B.G.  
 Hor. Scale 1:200  
 Vert. Scale 1:40  
 Date JUN 14-19  
 Job No. 18035

Drawing No.  
**C-13**  
 of 14

NOT VALID UNLESS  
 SIGNED & DATED