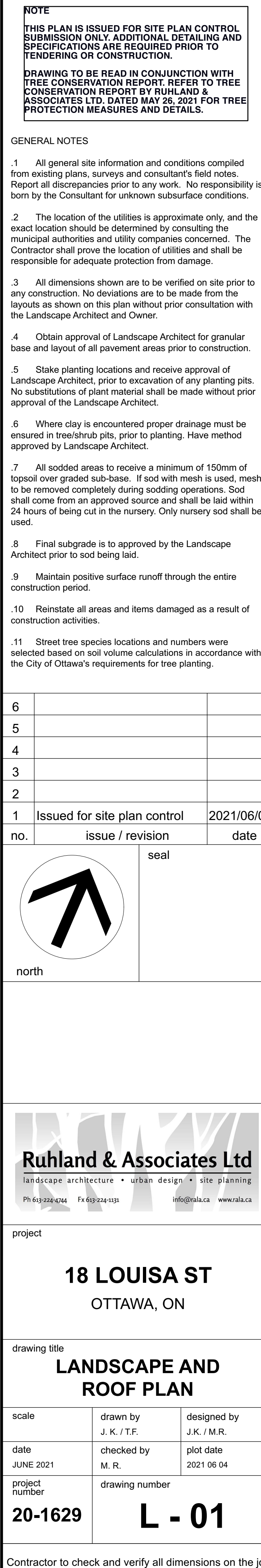
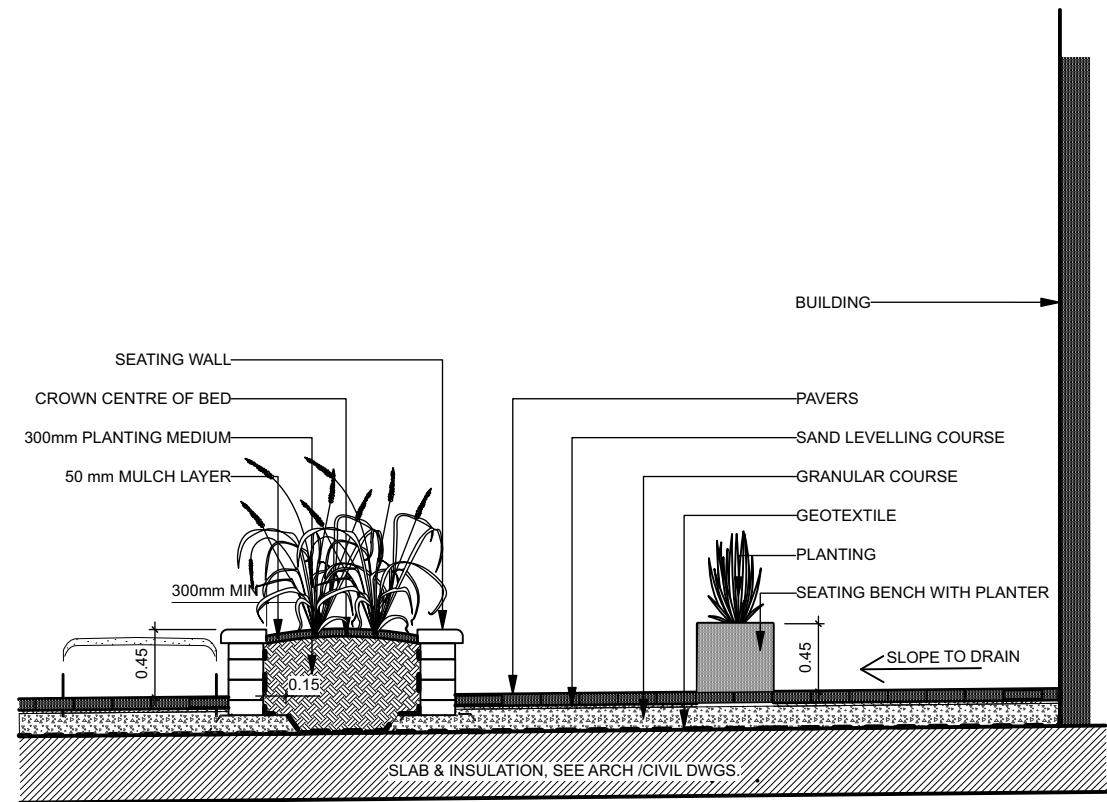


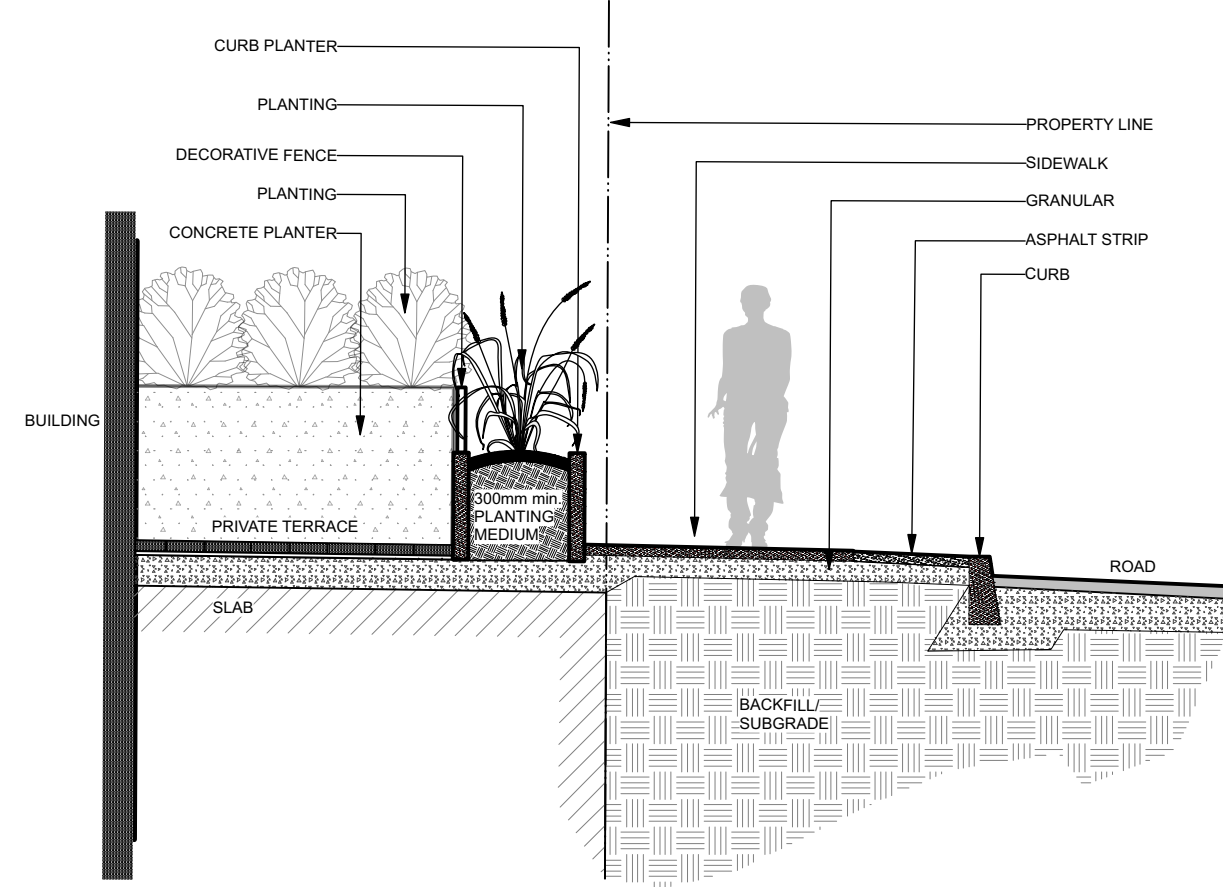


2 LANDSCAPE PLAN- ROOF TERRACE
Scale: 1:200



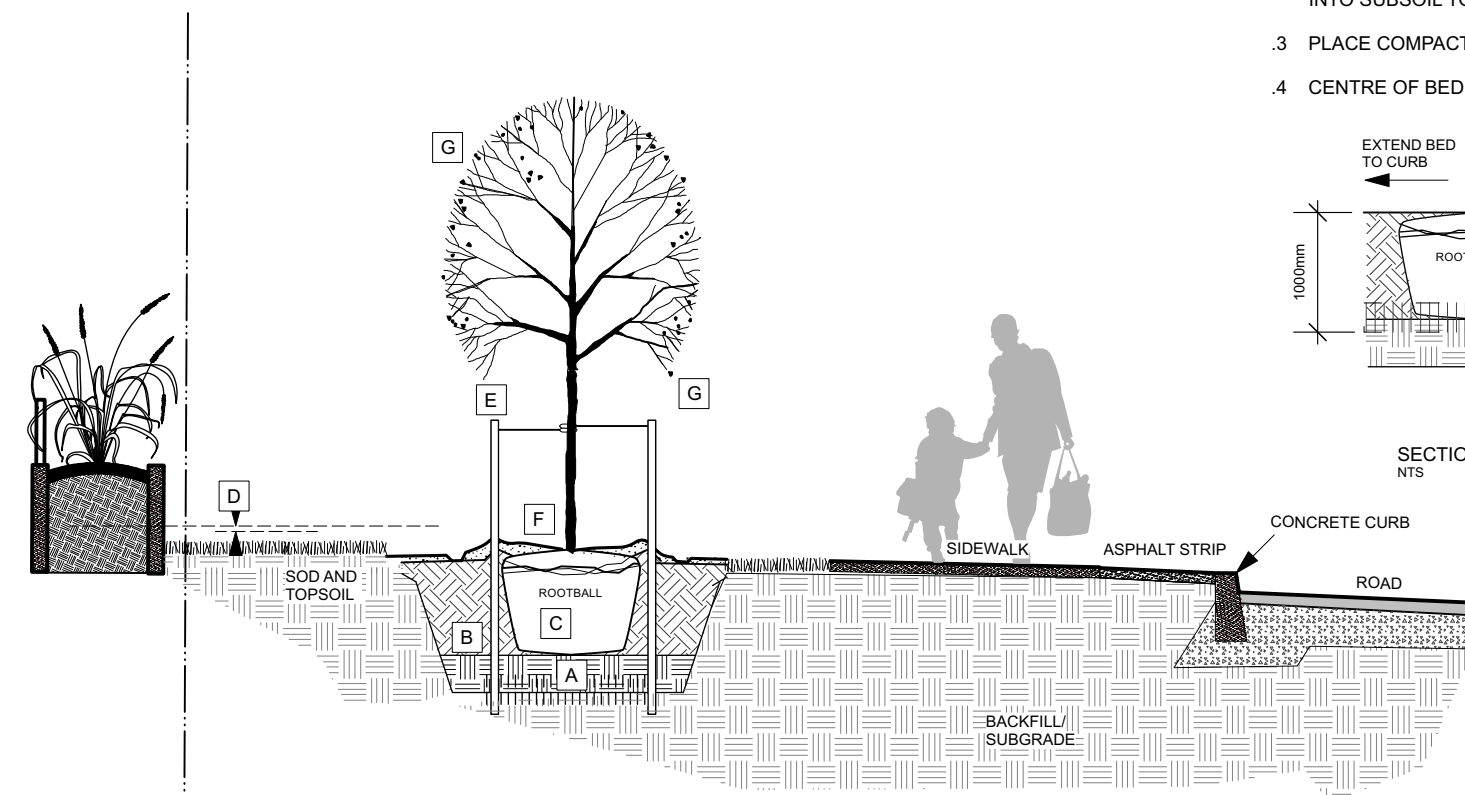


1 SECTION A-A - INTERIOR COURTYARD SEATING PLANTERS
Scale: NTS



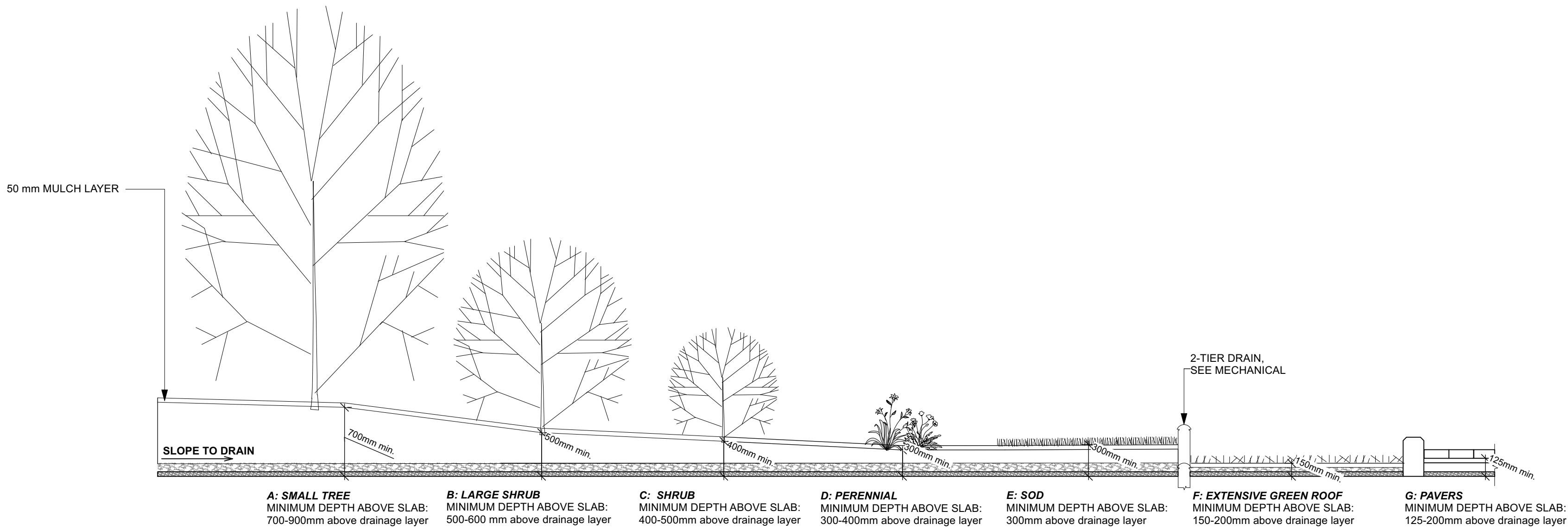
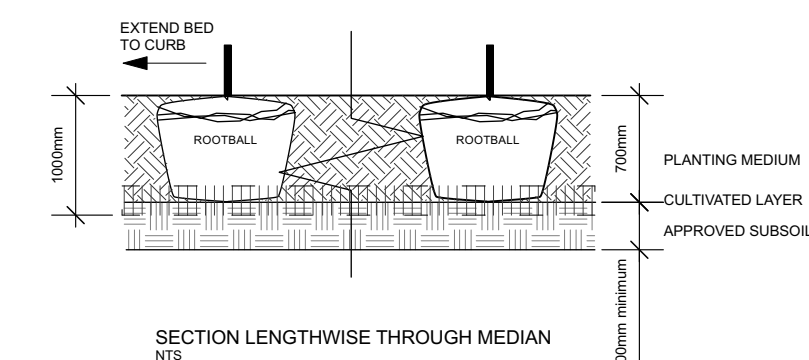
2 SECTION B-B - EXTERIOR TERRACE
Scale: NTS

- A SUBSOIL / SUBGRADE CULTIVATED LAYER
B PLANTING MEDIUM
C ROOTBALL / POT
D TOP OF ROOT CROWN TO BE FLUSH WITH PLANTING SOIL
E 2-METAL POSTS (40x 40x 2100 mm) PLACE AT OUTSIDE OF ROOTBALL AND FASTEN TO TRUNK WITH 3 mm GALVANIZED WIRE AND 25 mm 2 PLY REINFORCED HOSE (PARALLEL TO CURB)
F 50-75 mm MULCH LAYER, KEEP MULCH AWAY FROM STEMS AND PROVIDE 100mm DEEP SAUCER.
G PRUNE DAMAGED, DISEASED OR WEAK BRANCHES AS PER ACCEPTED HORTICULTURAL PRACTICE. DO NOT DAMAGE OR REMOVE LEADER.

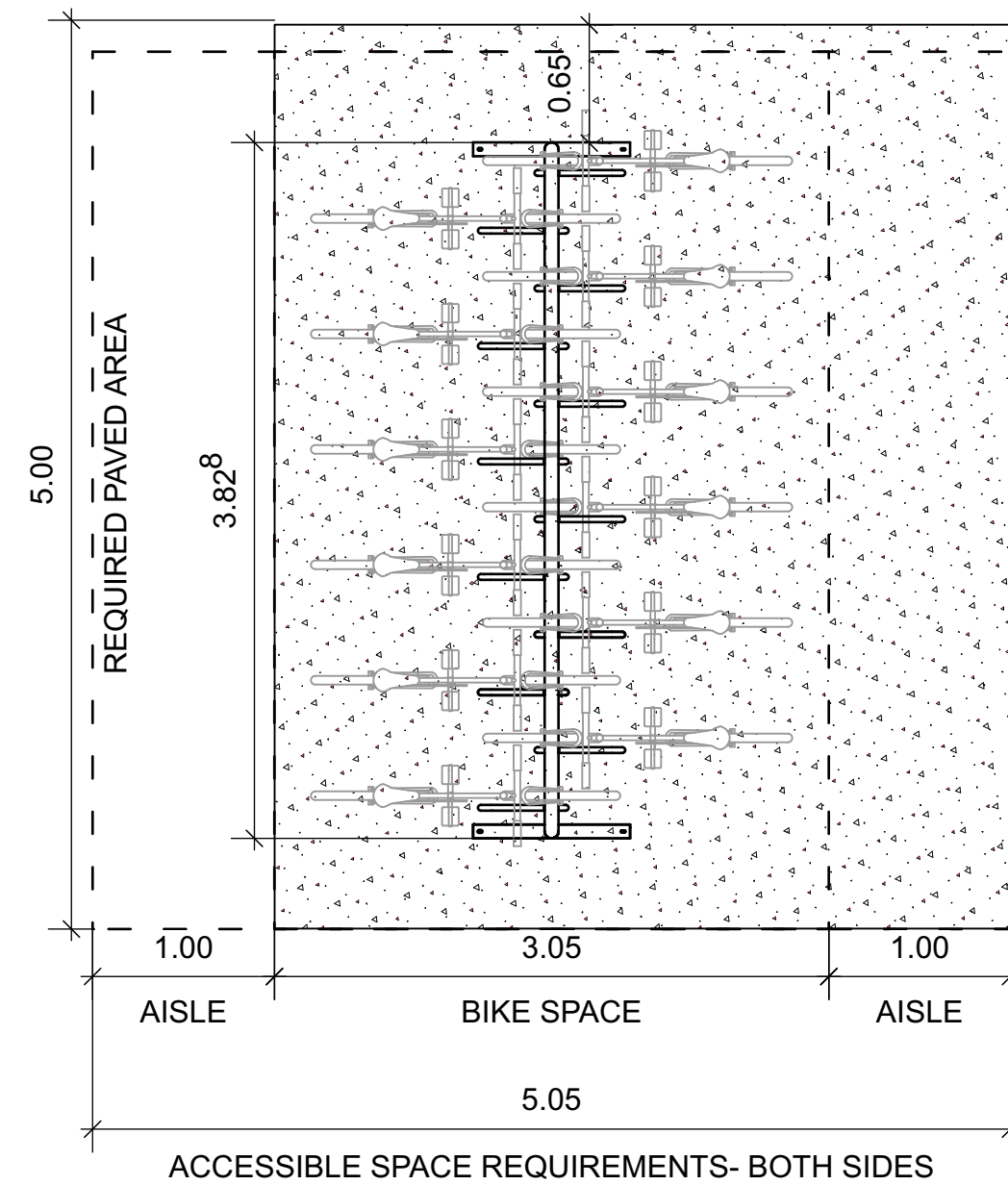


3 STREET TREE PLANTING FOR TREES IN RIGHT-OF-WAY
Scale: 1:50

- BED PREPARATION:
TOTAL PLANTING PROFILE DEPTH - 100mm, CONTINUOUS BETWEEN TREES
1 EXCAVATE OR PLACE APPROVED SUBSOIL* FOR PLANTING BED TO PROVIDE 700mm MINIMUM DEPTH PLANTING MEDIUM.
* WHERE SUBSOIL DOES NOT EXIST, OR IS NOT APPROVED FOR PLANTING (e.g. EXISTING GRANULAR BASE), EXCAVATE FURTHER TO 300mm AND INSTALL APPROVED SUBSOIL LAYER.
2 PLACE 150mm PLANTING MEDIUM OVER APPROVED SUBSOIL*. CULTIVATE PLANTING MEDIUM INTO SUBSOIL TO A DEPTH OF 150mm.
3 PLACE COMPACTED PLANTING MEDIUM ON CULTIVATED ZONE TO ACHIEVE FINAL GRADE.
4 CENTRE OF BED TO BE CROWNED ABOVE ADJACENT GRADE TO APPROVAL OF CONSULTANT.



4 SECTION OF SOIL PROFILES ON SLAB
Scale: NTS



5 12 CAPACITY DOUBLE-LOADED BIKE RACK
Scale: 1:40

Bed Preparation

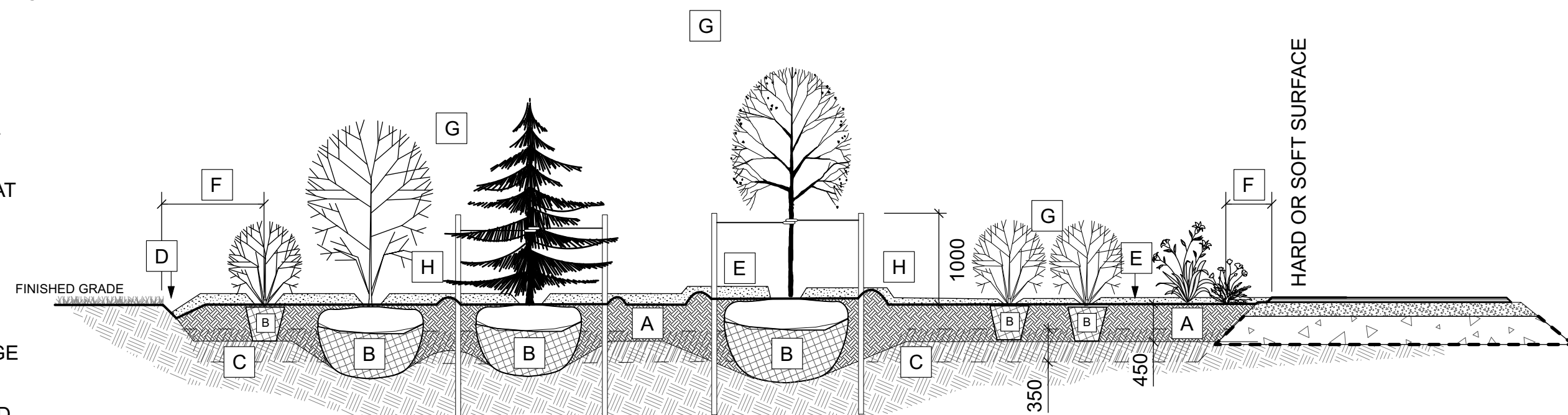
- EXCAVATE OR PLACE FILL FOR PLANTING BED TO PROVIDE 450mm MINIMUM DEPTH OF PLANTING MEDIUM. PLANTING BED TO BE DEEPENED AT TREE LOCATIONS. IF BASE OF PIT IS OVER EXCAVATED, RAISE BOTTOM TO PROPER LEVEL WITH COMPACTED PLANTING MEDIUM.
- PLACE 150mm PLANTING MEDIUM ON SUBGRADE AND CULTIVATE INTO TOP 200mm OF SUBSOIL. SEE NOTE BELOW.
- PLACE REMAINDER OF PLANTING MEDIUM OVER CULTIVATED PORTION TO ACHIEVE FINAL GRADE.
- CENTRE OF BED TO BE CROWNED ABOVE ADJACENT GRADE TO APPROVAL OF CONSULTANT.
- ENSURE POSITIVE DRAINAGE AWAY FROM BUILDING WALLS WHERE APPLICABLE.

Tree Planting

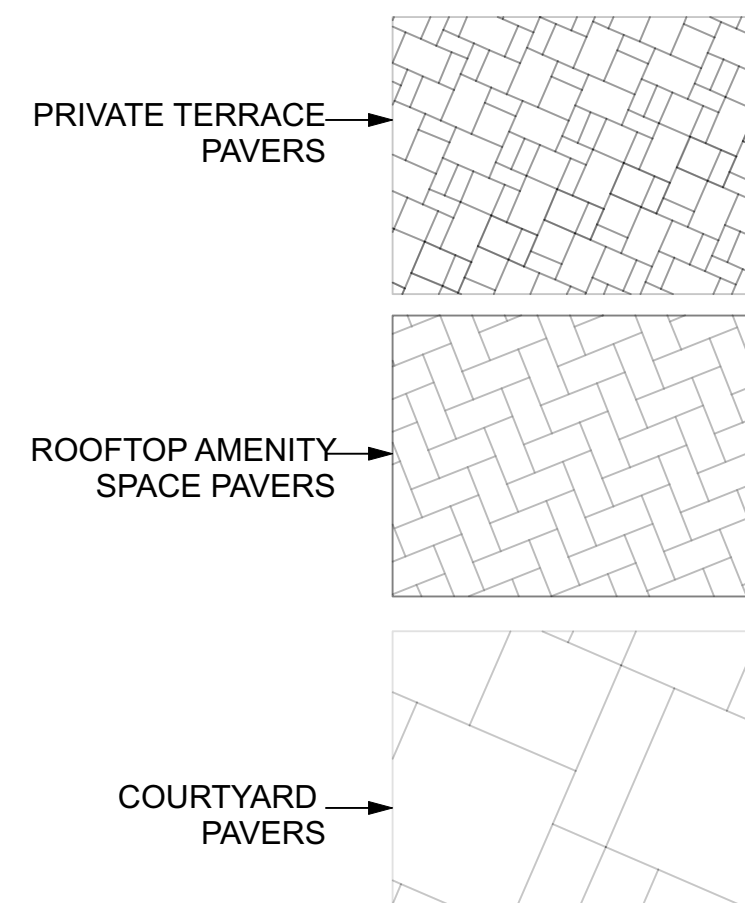
- CUT AND REMOVE TOP 1/3 OF BURLAP AND WIRE BASKET FROM ROOTBALL.
- PLACE 2-METAL POSTS (40 x 40 x 2100 mm) AT OUTSIDE OF ROOTBALL AND FASTEN TO TRUNK WITH APPROVED TREE TIES.
- WATER THOROUGHLY SUBSEQUENT TO PLANTING.
- WRAP TREE TRUNK AFTER INSPECTION OF TREES BY LANDSCAPE ARCHITECT.
- PROTECT TREE FROM RODENT DAMAGE.
- REMOVE TREE RINGS, STAKES AND TRUNK WRAPPING AFTER WARRANTY PERIOD.

- A 450mm COMPACTED PLANTING MEDIUM, DEEPEN AT TREES
- B ROOTBALL, TOP OF ROOT CROWN TO BE FLUSH WITH PLANTING SOIL AND 50mm ABOVE SOIL OUTSIDE PLANTING PIT / POT
- C 350mm PLANTING MEDIUM / SUBSOIL CULTIVATED LAYER. CULTIVATE AT TREE PIT BOTTOM. SEE NOTE BELOW.
- D EDGE TO DEPTH OF 100mm
- E 50-75 mm MULCH LAYER, KEEP MULCH AWAY FROM STEMS
- F FIRST ROW OF PERENNIALS TO BE PLANTED 600mm FROM EDGE OF BED/CURB FIRST ROW OF SHRUBS TO BE PLANTED 900mm FROM EDGE OF BED/CURB
- G PRUNE DAMAGED, DISEASED OR WEAK BRANCHES AS PER ACCEPTED HORTICULTURAL PRACTICE, DO NOT DAMAGE OR REMOVE LEADER
- H PROVIDE 150 mm DEEP SAUCER AT TREES

6 PLANTING DETAIL ON GRADE
Scale: NTS



- NOTES:
- PLANTING BED AREAS EXCAVATED TO 500mm BELOW FINAL GRADE FOR ROUGH GRADE.
 - REFER TO PLANT LIST FOR PLANT SPACING.



7 PAVING PATTERNS
Scale: NTS

GENERAL NOTES

- All general site information and conditions compiled from existing plans, surveys and consultant's field notes. Report all discrepancies prior to any work. No responsibility is born by the Consultant for unknown subsurface conditions.
- The location of the utilities is approximate only, and the exact location should be determined by consulting the municipal authorities and utility companies concerned. The Contractor shall prove the location of utilities and shall be responsible for adequate protection from damage.
- All dimensions shown are to be verified on site prior to any construction. No deviations are to be made from the layouts as shown on this plan without prior consultation with the Landscape Architect and Owner.
- Obtain approval of Landscape Architect for granular base and layout of all pavement areas prior to construction.
- Stake planting locations and receive approval of Landscape Architect, prior to excavation of any planting pits. No substitutions of plant material shall be made without prior approval of the Landscape Architect.
- Where clay is encountered proper drainage must be ensured in tree/shrub pits, prior to planting. Have method approved by Landscape Architect.
- All sodded areas to receive a minimum of 150mm of topsoil over graded sub-base. If sod with mesh is used, mesh to be removed completely during sodding operations. Sod shall come from an approved source and shall be laid within 24 hours of being cut in the nursery. Only nursery sod shall be used.
- Final subgrade is to be approved by the Landscape Architect prior to sod being laid.
- Maintain positive surface runoff through the entire construction period.
- Reinstate all areas and items damaged as a result of construction activities.
- Street tree species locations and numbers were selected based on soil volume calculations in accordance with the City of Ottawa's requirements for tree planting.

6		
5		
4		
3		
2		
1	Issued for site plan control	2021/06/04

no.	issue / revision	date
	seal	
north		



project

18 LOUISA ST
OTTAWA, ON

drawing title

SECTIONS / DETAILS

scale	drawn by J. K. / T.F.	designed by J.K. / M.R.
date JUNE 2021	checked by M. R.	plot date 2021 06 04

project number 20-1629	drawing number L - 02
---------------------------	--------------------------

Contractor to check and verify all dimensions on the job