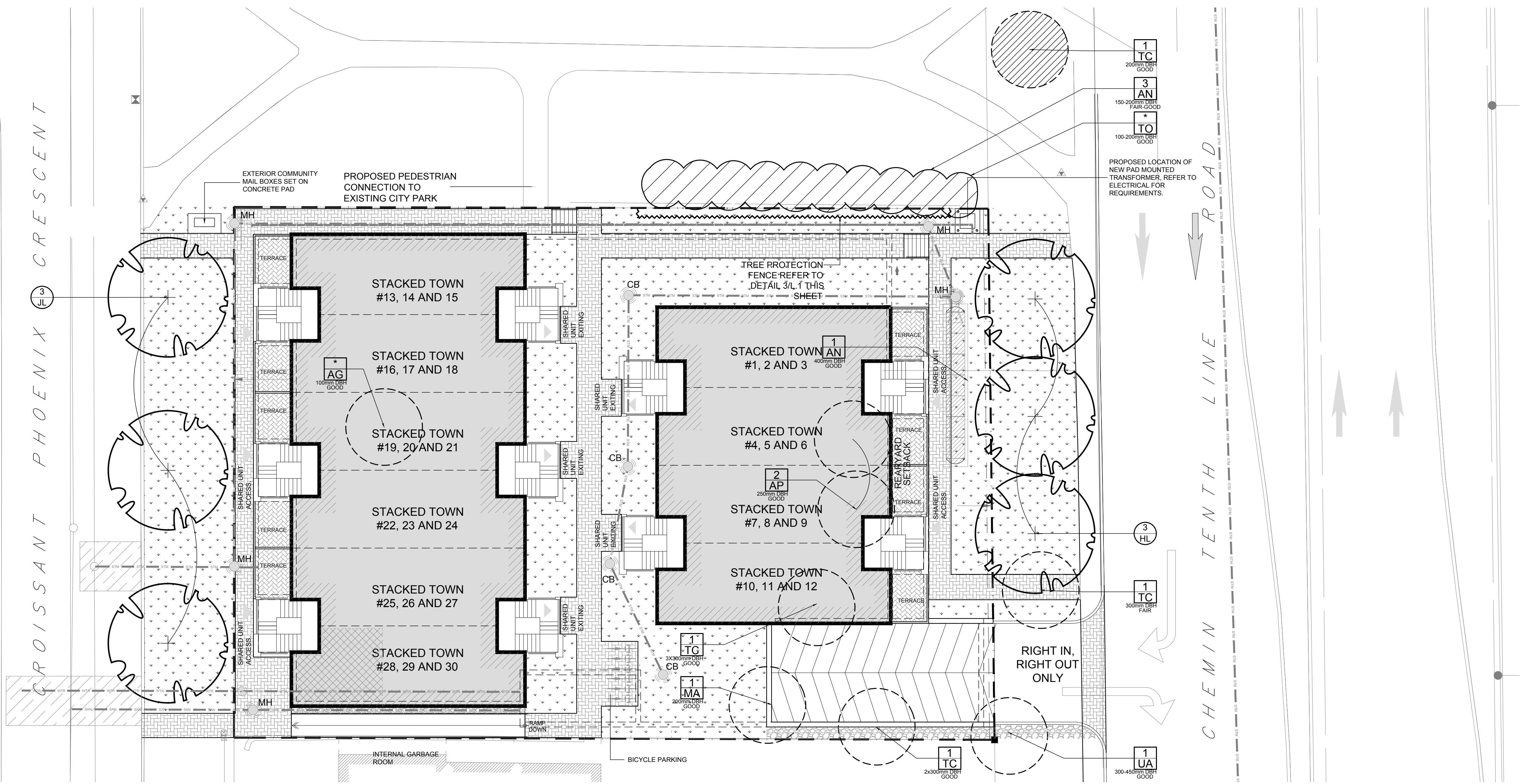
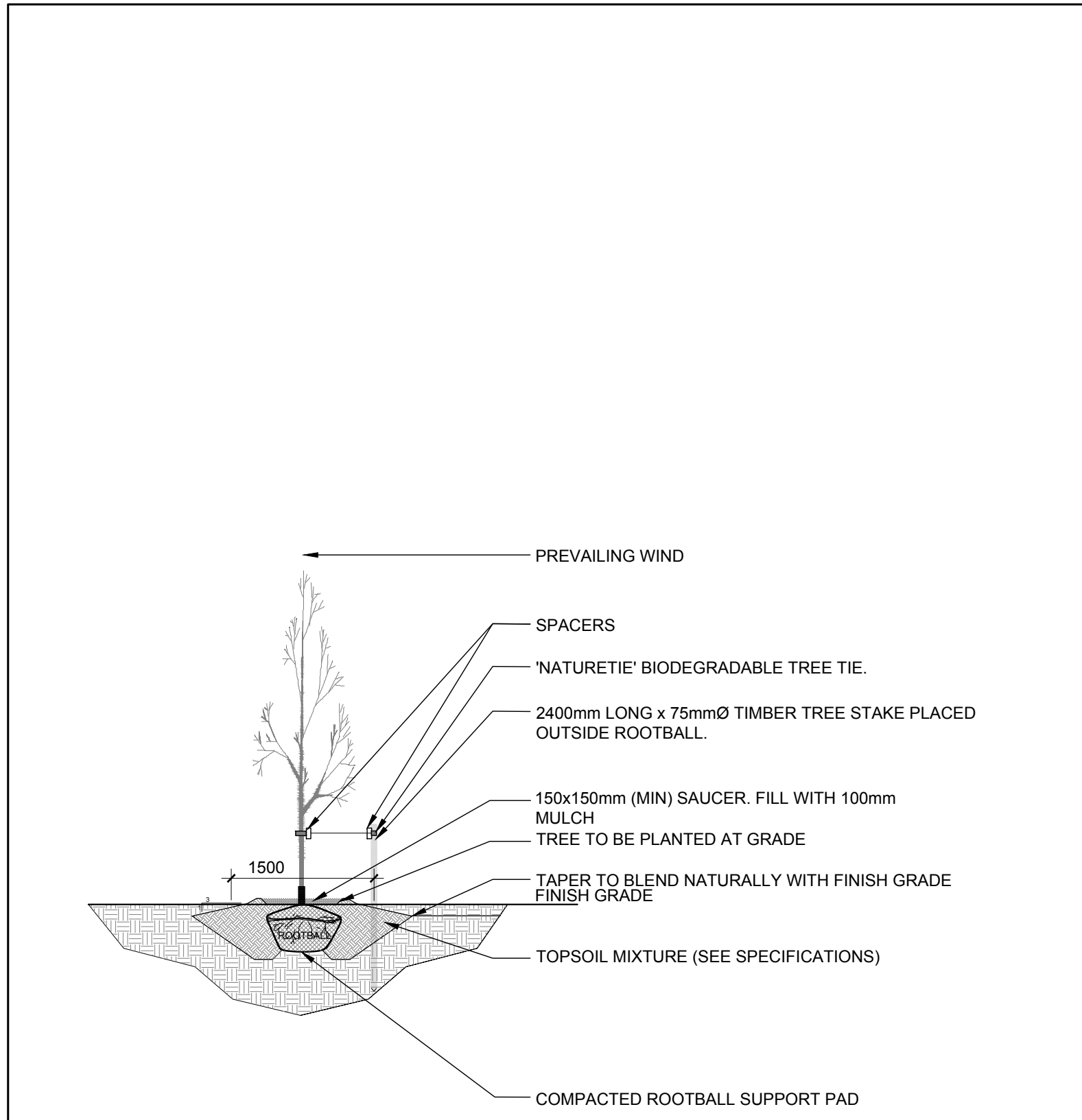


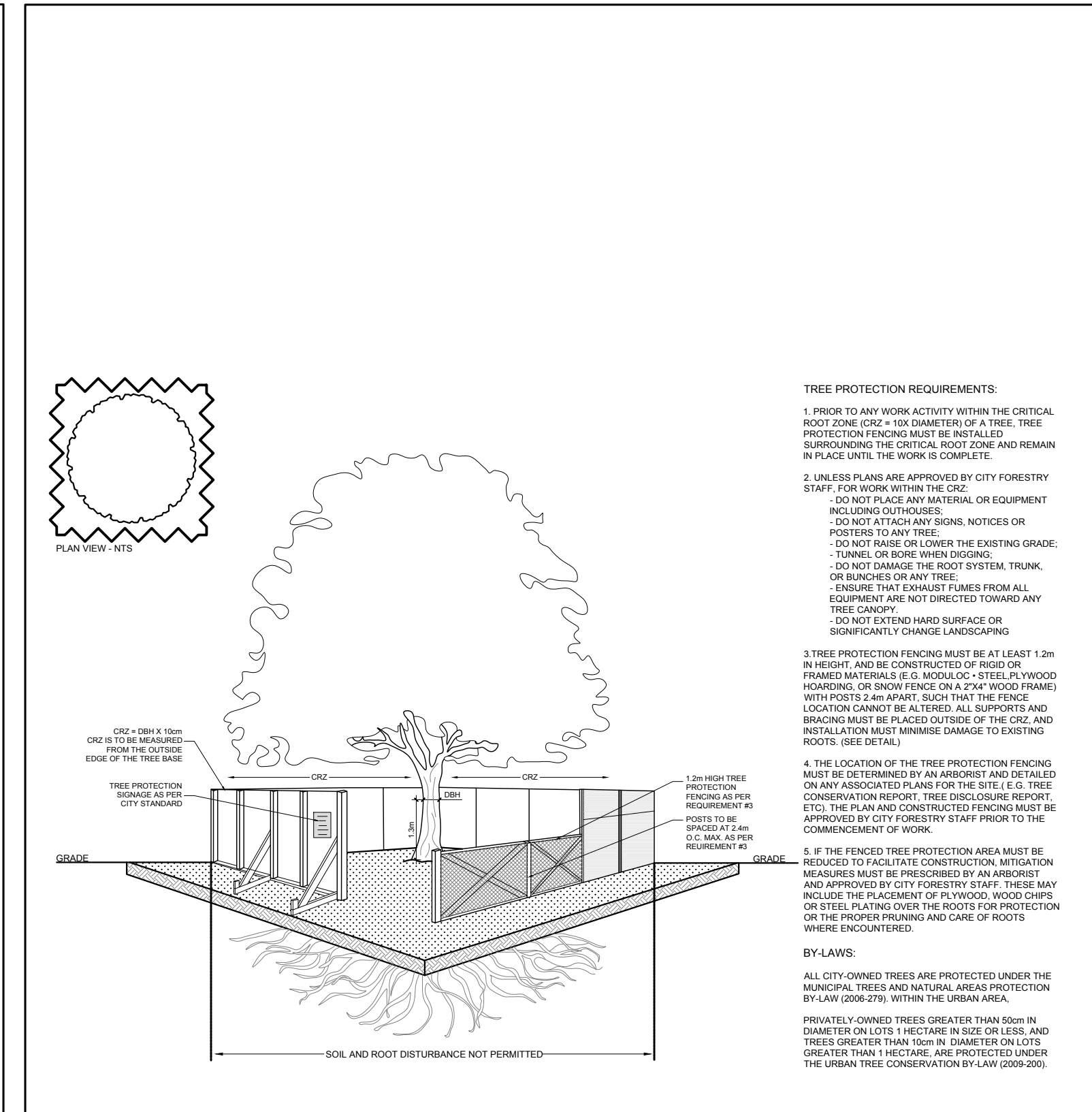
- GENERAL NOTES:**
1. It is the responsibility of the appropriate contractor or official to report any errors, omissions or discrepancies on this plan with actual site conditions to the Landscape Architect before proceeding with construction.
 2. The contractor is to notify all utility companies and authorities prior to any excavation and ascertain locations of underground services.
 3. The contractor is to reinstate all areas and items damaged as a result of construction activity.
 4. The contractor is to comply with all pertinent codes and by-laws.
 5. The contractor is to maintain a positive surface run-off throughout the entire construction period.
 6. The Landscape Architect is not responsible for subsurface conditions.
 7. The contractor is to identify all existing trees to remain on site with the Landscape Architect prior to construction.
 8. The contractor is to stake the proposed location of all plant material in conjunction with the Landscape Architect prior to excavation.
 9. Minimum distances for selected deciduous trees are as follows:
 - Building Foundations 7.5m
 - Sidewalks 1.5m
 - Public Streets 2.5m
 - Underground Infrastructure 2.0m
 10. All trees within 1m of underground utility trenches are to be excavated by hand.
 11. Remove all protective wrapping from tree trunks after installation.
 12. Staking of trees shall only be performed if necessary.
 13. Ensure that mulch is pulled back a min. distance of 75mm from base of tree trunk.



1
L.1 TREE CONSERVATION REPORT & LANDSCAPE PLAN
SCALE 1:150



2
L.1 DECIDUOUS TREE PLANTING
SCALE: NTS



3
L.1 TREE PROTECTION FENCE
SCALE: NTS

PROPOSED PLANT LIST						
KEY	QTY.	BOTANICAL NAME	COMMON NAME	SIZE	CONDITION	REMARKS
TREES						
HL	3	Gleditsia triacanthos 'Draves'	Street Keeper Honey Locust	60mm cal.	B&B	Single leader
JL	3	Syringa reticulata	Japanese Tree Lilac	60mm cal.	B&B	

EXISTING TREE LIST						
KEY	QTY.	BOTANICAL NAME	COMMON NAME	SIZE	CONDITION	REMARKS
TREES						
AG	*	Acer ginnala	Amur Maple	100mm dbh	Good	To be removed
AN	4	Acer negundo	Manitoba Maple	150-400mm dbh	Fair-Good	See plan
AP	2	Acer platanoides	Freeman's Maple	250mm dbh	Good	To be removed
MA	1	Malus sp.	Crabapple	200mm dbh	Good	To be removed
TC	4	Tilia cordata	Littleleaf Linden	200-300mm dbh	Fair-Good	See plan
TO	*	Thuja occidentalis	White Cedar	100-200mm dbh	Good	To remain
UA	1	Ulmus americana	American Elm	2x400-450mm dbh	Good	To remain

**DENOTES NUMEROUS*

*DENOTES NUMEROUS

CLIENT:

BRIDOR
Developments

996-B St. Augustin Rd
Embrun, ON K0A 1W0
Tel: (815) 443-3070

CONSULTANTS

ARCHITECTS:

P2
concepts

739 RIDGEWOOD AVE., UNIT 201
OTTAWA, ONTARIO, K1V 6W8

CIVIL ENGINEERS

BLANCHARD LETENDRE
ENGINEERING

767 Notre-Dame St. Studio 42
Embrun, ON K0A 1W0
Tel: (815) 693-0700

LEGEND

- PROPOSED PRECAST CONCRETE PAVERS TYPE I
- PROPOSED PRECAST CONCRETE PAVERS TYPE II
- PROPOSED DECIDUOUS TREE
- PROPOSED SOD
- PROPOSED RIVERSTONE MULCH
- PROPOSED TREE PROTECTION FENCE

2	RE-ISSUED FOR SITE PLAN CONTROL	04/19/2021	ML	JL
1	ISSUED FOR SITE PLAN CONTROL	03/09/2021	ML	JL
No.	Issue	Date	ML	DR

JAMES B. LENNOX & ASSOCIATES INC.
LANDSCAPE ARCHITECTS
3332 CARLING AVE. OTTAWA, ONTARIO K2H 5A8
Tel. (613) 722-5168 Fax. (1(866) 343-3942

PROJECT

STACKED TOWNHOUSES

1592 TENTH LINE ROAD, OTTAWA ON

DRAWING

TREE CONSERVATION REPORT &
LANDSCAPE PLAN

STAMP

ASSOCIATION OF LANDSCAPE ARCHITECTS
MEMBER
JAMES B. LENNOX

SCALE

AS SHOWN

START DATE

FEBRUARY 2021

PROJECT NO.

DRAWING NO.

PLOT SIZE ARCH-D

L.1