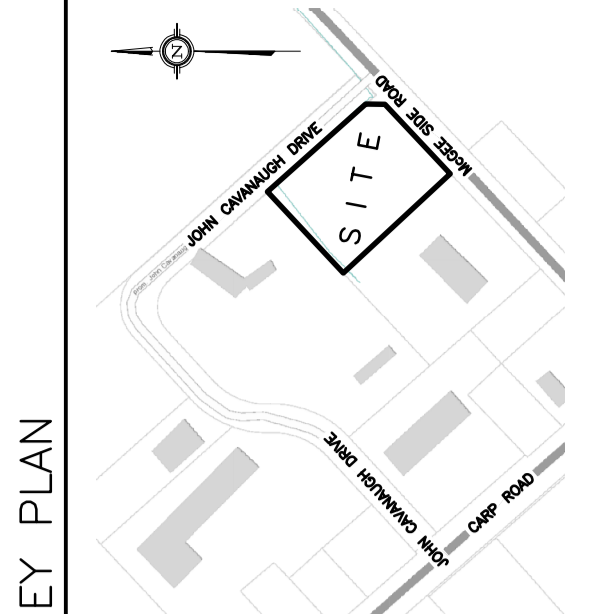


DRAWING LEGEND	
INV	INVERT OF PIPE
SAN	SANITARY SEWER
WL	WATER LINE
+67.89	EXISTING GRADE ELEVATION
+67.89	PROPOSED GRADE ELEVATION
2%	EXISTING SLOPE OF GRADE
2%	PROPOSED SLOPE OF GRADE
T.O.S.	TOP OF SLOPE
B.O.S.	BOTTOM OF SLOPE
---	CENTERLINE OF SWALE
---	SILT BARRIER FENCE
---	PROPERTY LINE
---	150mm CURB/DEPRESSED CURB
---	LIGHT-DUTY PAVEMENT
---	HEAVY-DUTY PAVEMENT
---	CONCRETE
---	LANDSCAPE
C.R.Z.	CRITICAL ROOT ZONE
FFL	FIRST FLOOR ELEVATION
USF	UNDERSIDE OF FOOTING



No.	DATE	REVISION
4	JUN 14-21	RE-ISSUED FOR APPROVAL
3	APR 22-21	ISSUED FOR BUILDING PERMIT
2	MAR 12-21	ISSUED FOR REVIEW
1	JAN 27-21	ISSUED FOR REVIEW & COORDINATION

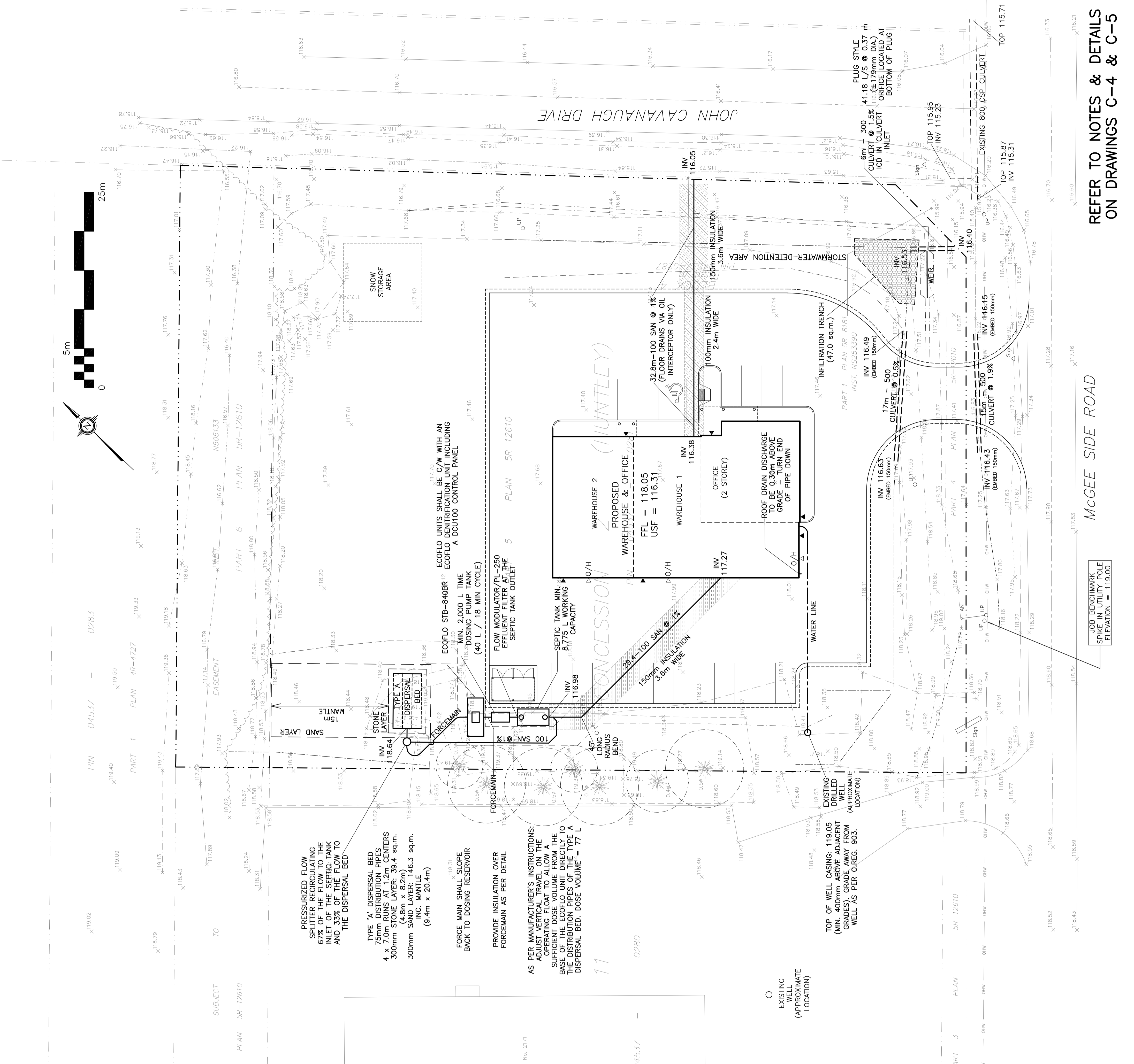
D. B. GRAY ENGINEERING INC.
 Surveyor/Engineer/Consulting & Planning - Sewer & Sanitary Sewer - Stormwater
 700 Long Point Circle
 Ottawa, Ontario
 416-464-8044
 dgray@dbgrayengineering.com

CLS ROOFING LTD
OFFICE & WAREHOUSE
 2167 MCGEE SIDE ROAD
 OTTAWA, ONTARIO

SITE SERVICING PLAN

Engineer's Seal

 Drawing No. **C-1** of **6**
 NOT VALID UNLESS SIGNED & DATED



REFER TO NOTES & DETAILS
ON DRAWINGS C-4 & C-5

MCGEE SIDE ROAD

JOB BENCHMARK
SPIKE IN UTILITY POLE
ELEVATION = 119.00