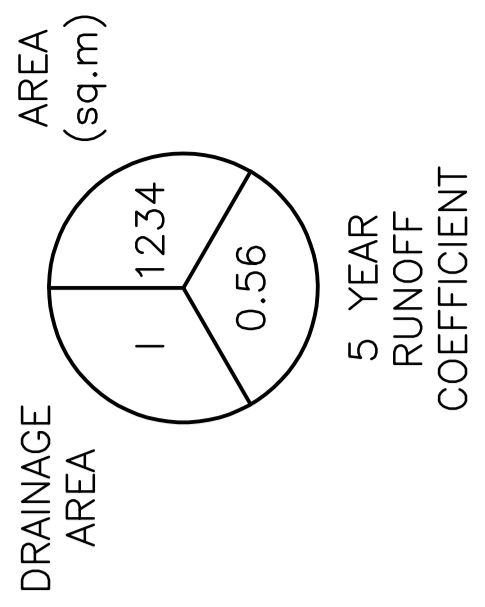
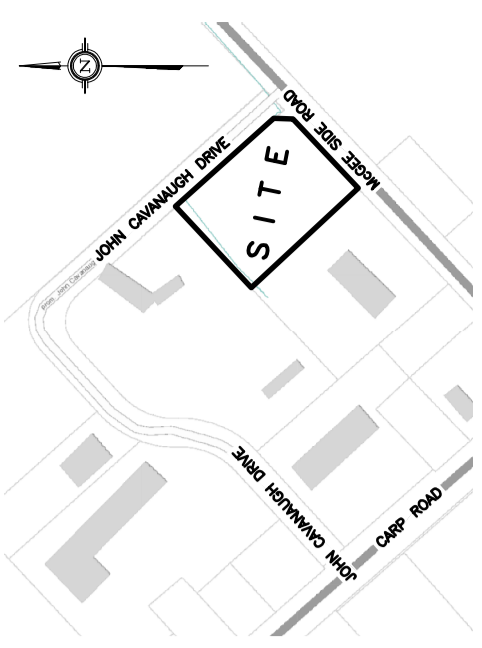


**LEGEND**



**KEY PLAN**

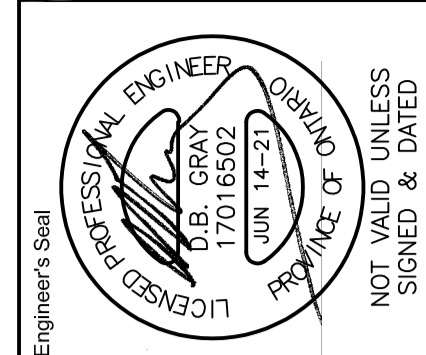


No.	DATE	REVISION
1	JUN 14-21	RE-ISSUED FOR APPROVAL

**D. B. GRAY ENGINEERING INC.**  
Professional Engineer  
700 Long Point Circle  
Ottawa, Ontario  
613-425-8044  
dgray@dbgrayengineering.com

**CLS ROOFING LTD  
OFFICE & WAREHOUSE  
2167 MCGEE SIDE ROAD  
OTTAWA, ONTARIO**

**PRE-DEVELOPMENT  
DRAINAGE PLAN**



Drawn: D.B.G.  
Horr. Scale: 1:250  
Vert. Scale: 18-20  
Date: NOV 18-20  
Rev. No.: 20088

Drawing No.: **C-6**  
of **6**

#18432

